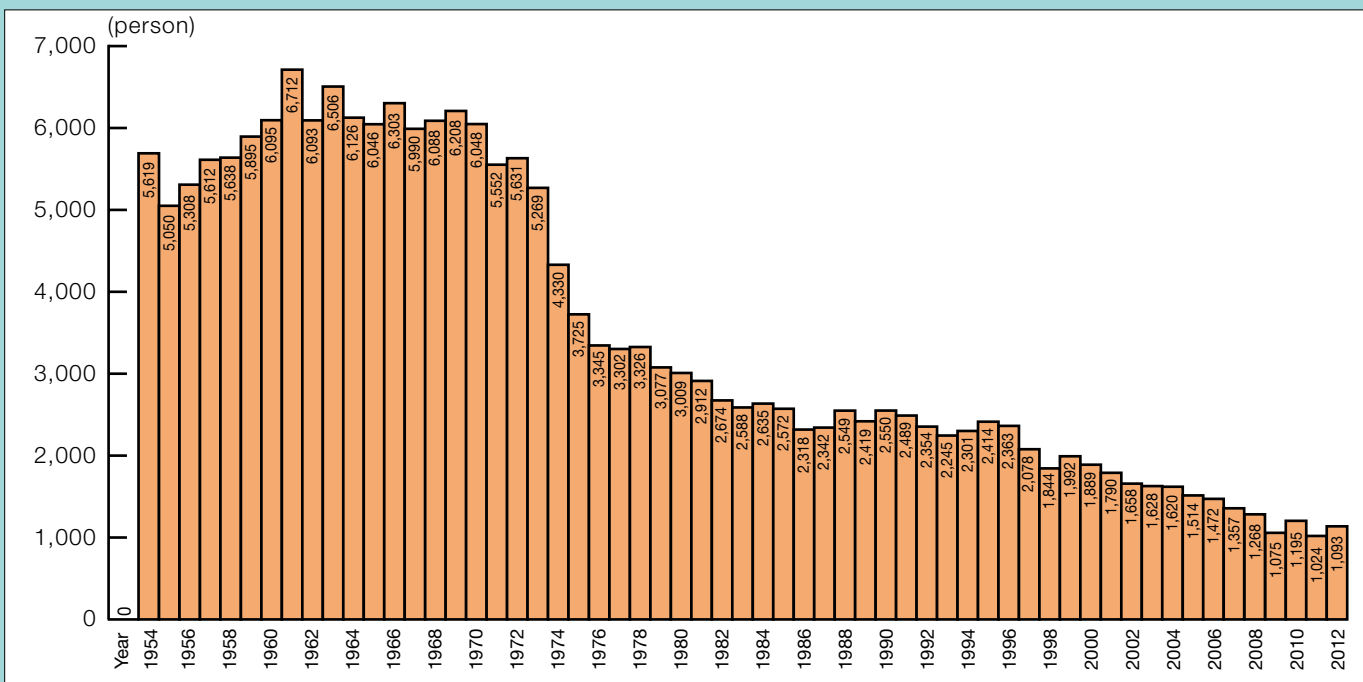
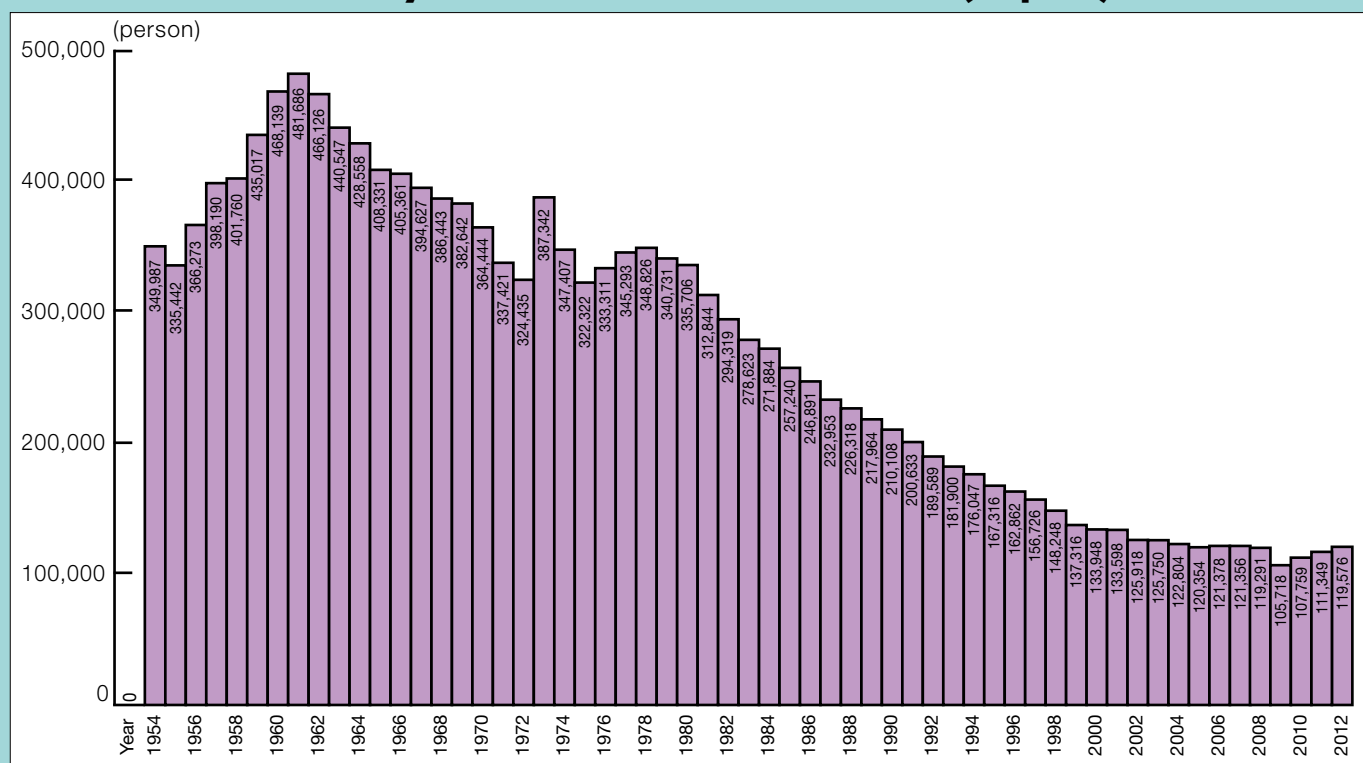


Statistics

Change in Number of Deaths in All Industries (Japan)



Change in Number of Deaths and Injuries Requiring an Absence of 4 Days or More in All Industries (Japan)

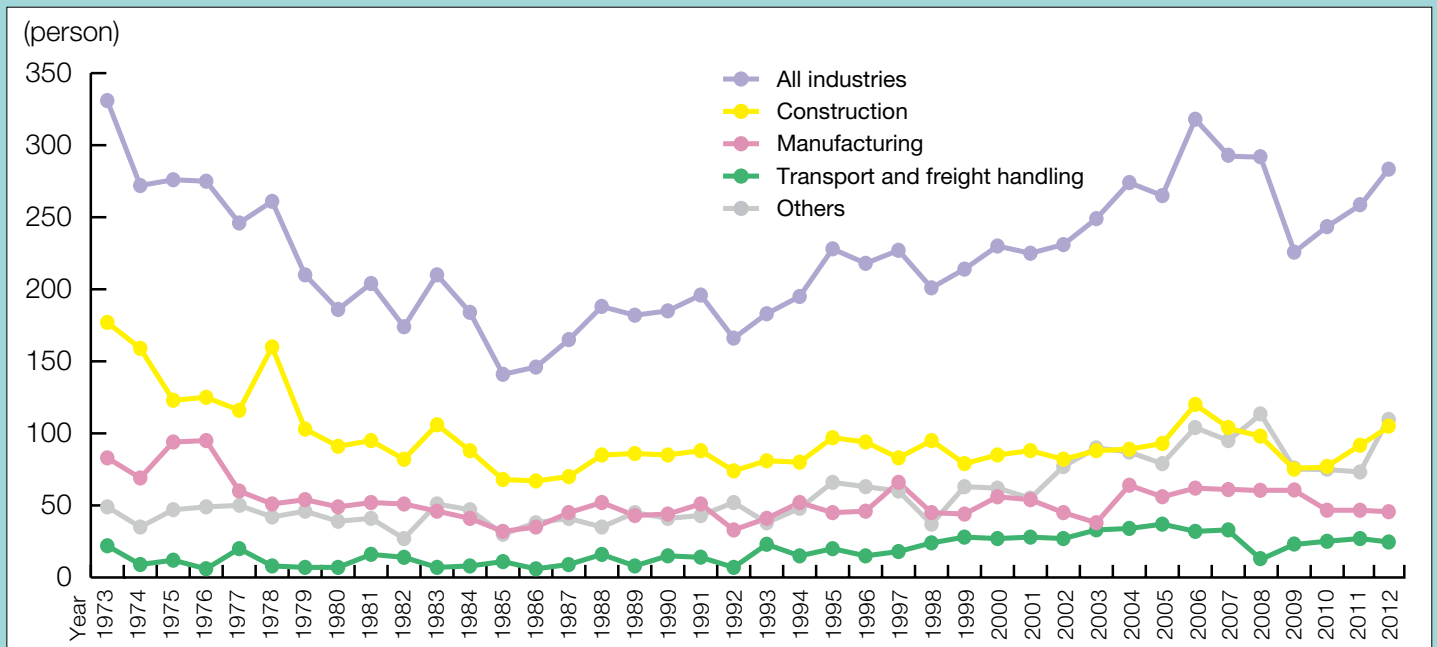


Note: The figures for 1972 and before indicate the number of deaths and injuries requiring an absence of 8 days or more.

Change in Serious Industrial Accidents by Industry (Japan)

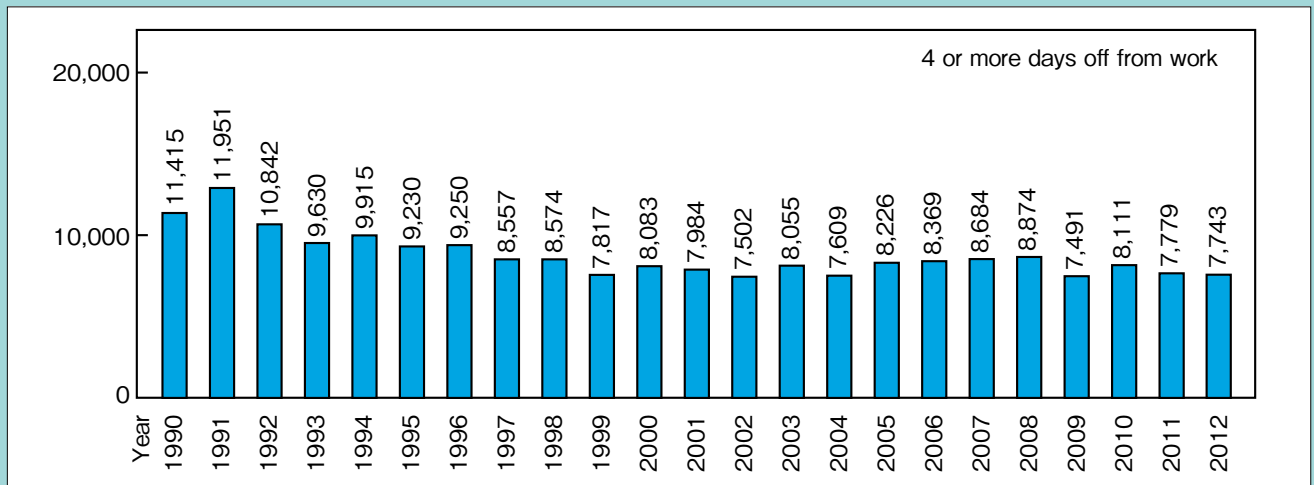
	1973	1974	1975	1976	1977	1978	1979	1980	1981	1982	1983	1984	1985	1986	1987	1988	1989	1990	1991	1992
All industries	331	272	276	275	246	261	210	186	204	174	210	184	141	146	165	188	182	185	196	166
Construction	177	159	123	125	116	160	103	91	95	82	106	88	68	67	70	85	86	85	88	74
Manufacturing	83	69	94	95	60	51	54	49	52	51	46	41	32	35	45	52	43	44	51	33
Transport and freight handling	22	9	12	6	20	8	7	7	16	14	7	8	11	6	9	16	8	15	14	7
Others	49	35	47	49	50	42	46	39	41	27	51	47	30	38	41	35	45	41	43	52

	1993	1994	1995	1996	1997	1998	1999	2000	2001	2002	2003	2004	2005	2006	2007	2008	2009	2010	2011	2012
All industries	183	195	228	218	227	201	214	230	225	231	249	274	265	318	293	281	228	245	255	284
Construction	81	80	97	94	83	95	79	85	88	82	88	89	93	120	104	93	75	87	95	105
Manufacturing	41	52	45	46	66	45	44	56	54	45	38	64	56	62	61	58	55	49	49	45
Transport and freight handling	23	15	20	15	18	24	28	27	28	27	33	34	37	32	33	13	21	24	27	24
Others	38	48	66	63	60	37	63	62	55	77	90	87	79	104	95	117	77	85	84	110

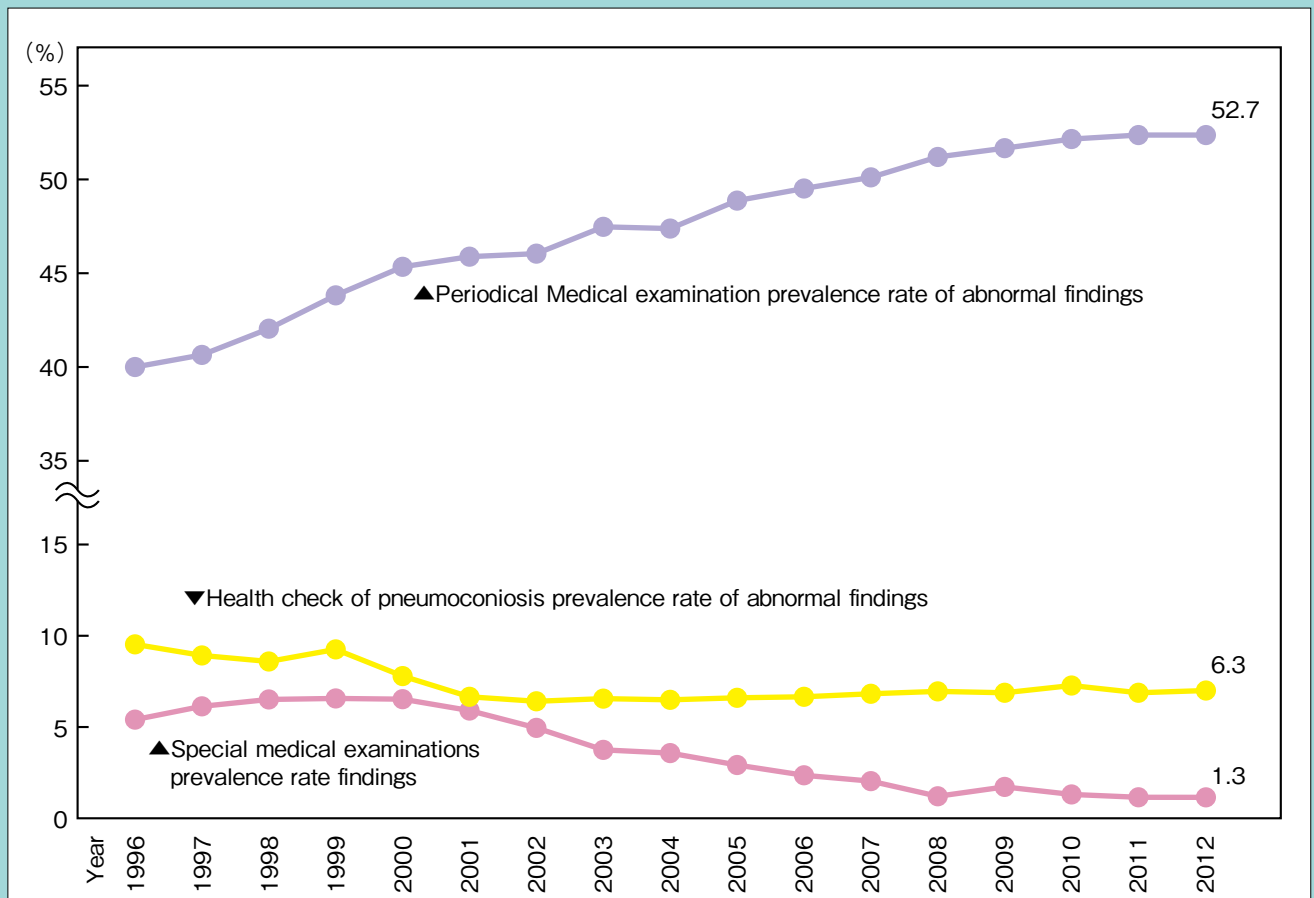


Note: "Serious industrial accident" signifies an accident resulting in three or more deaths and/or injuries at a time.

Change in Number of Occupational Diseases (Japan)



Prevalence rate of abnormal findings of periodical medical examination (Japan)



Note: Sources of above statistics come from those of MHLW