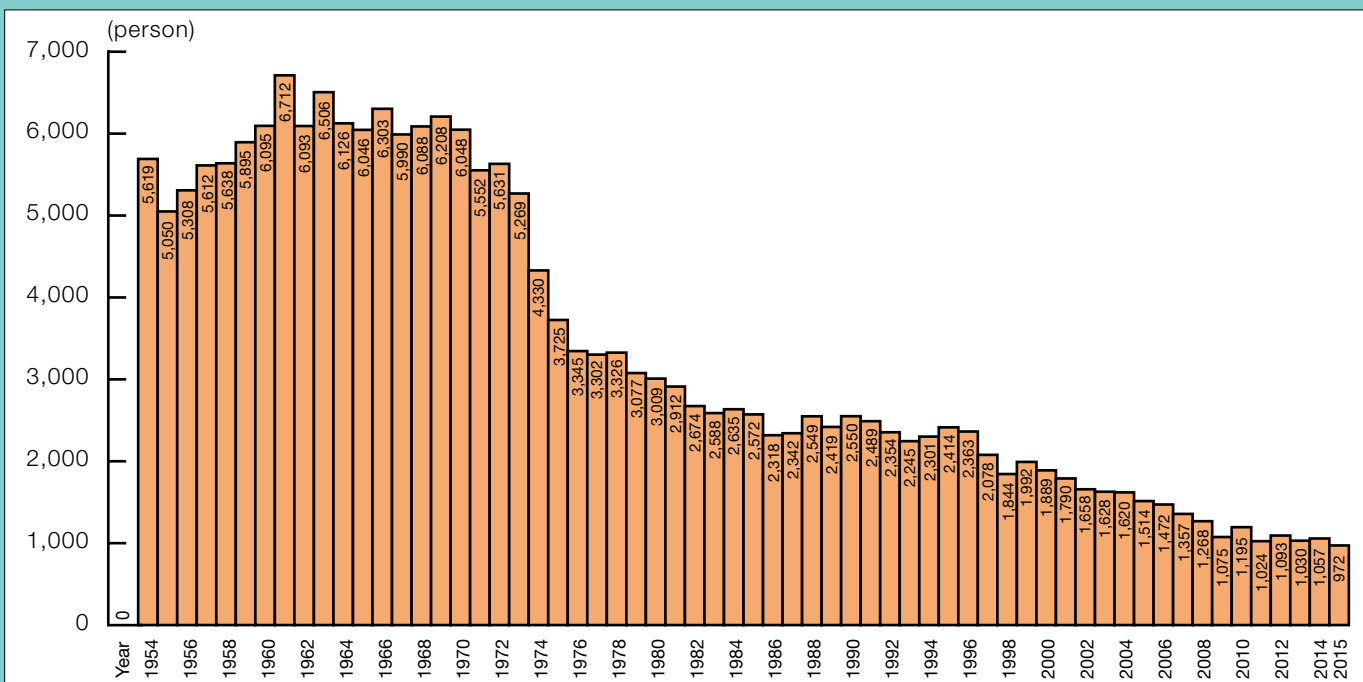
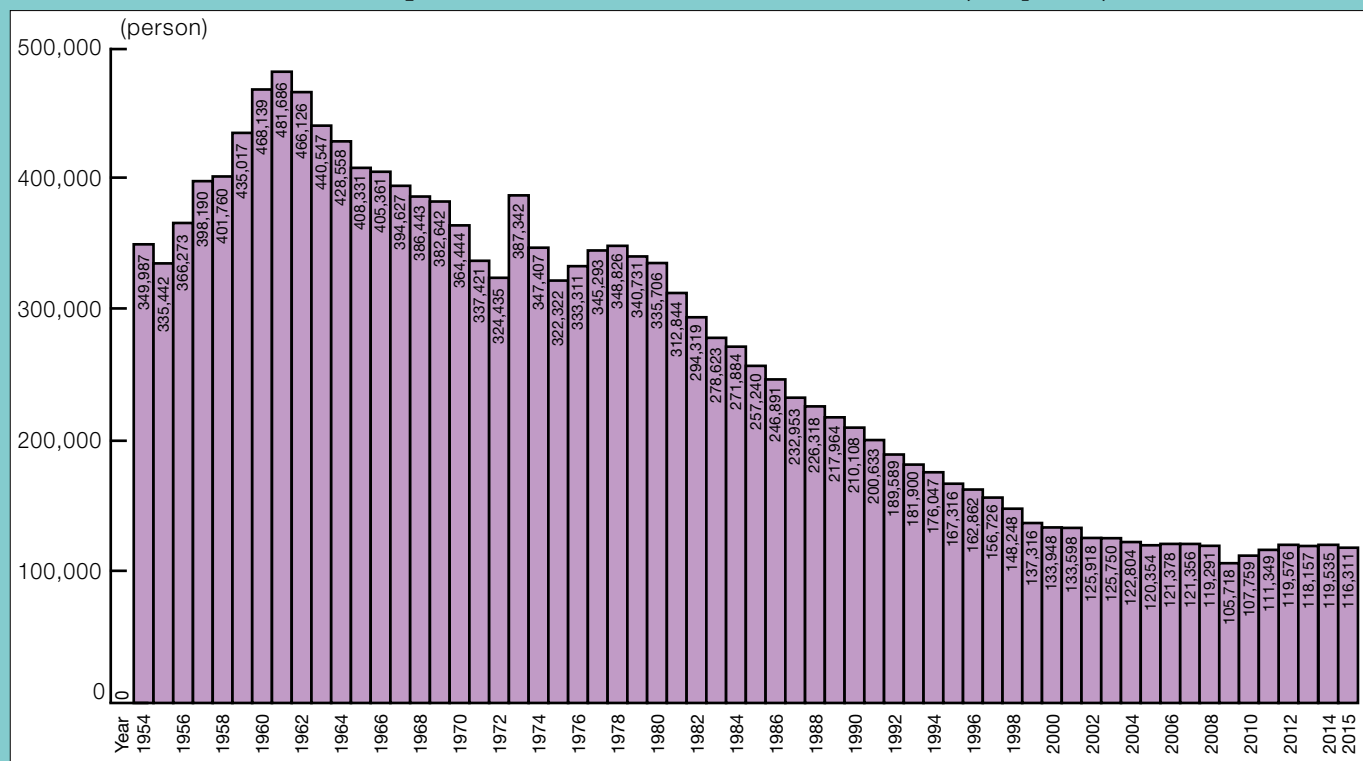


Statistics

Change in Number of fatalities in All Industries (Japan)



Change in Number of fatalities and Injuries Requiring an Absence of 4 Days or More in All Industries (Japan)



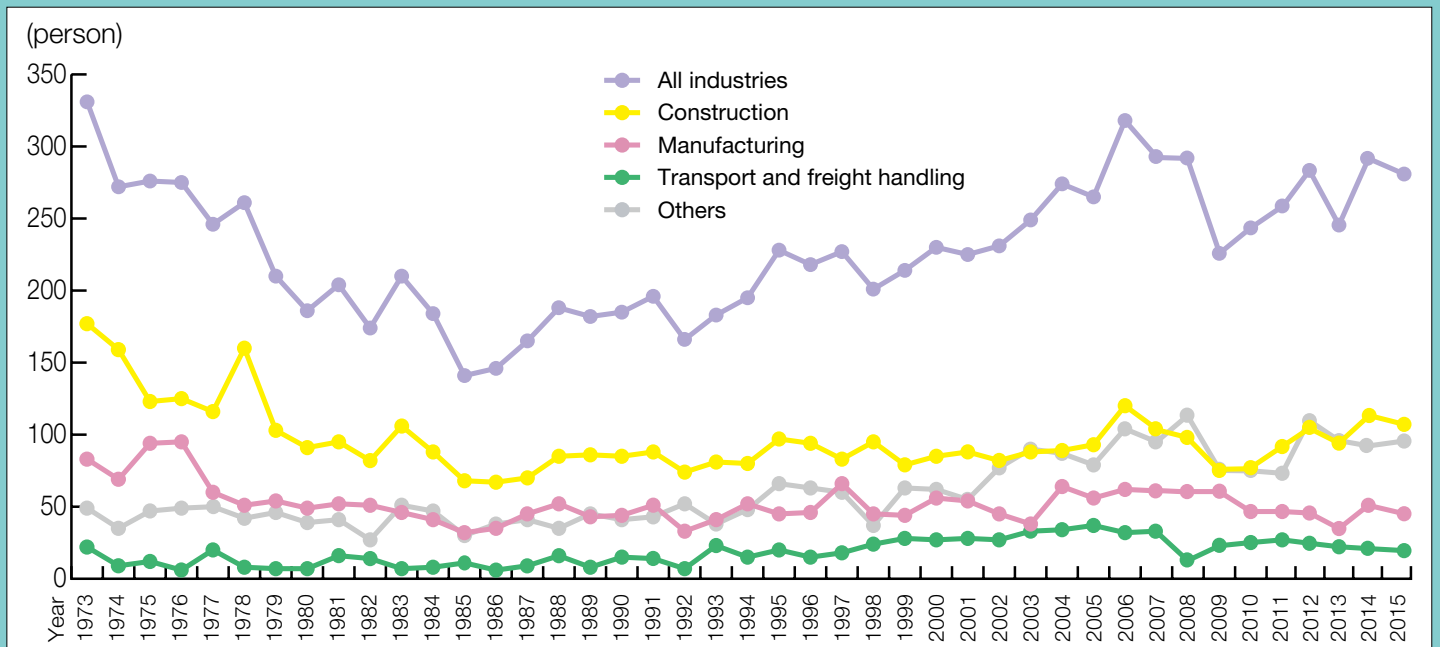
Note: The figures for 1972 and before indicate the number of deaths and injuries requiring an absence of 8 days or more.

Change in Serious Industrial Accidents by Industry (Japan)

	1973	1974	1975	1976	1977	1978	1979	1980	1981	1982	1983	1984	1985	1986	1987	1988	1989	1990	1991	1992	1993	1994
All industries	331	272	276	275	246	261	210	186	204	174	210	184	141	146	165	188	182	185	196	166	183	195
Construction	177	159	123	125	116	160	103	91	95	82	106	88	68	67	70	85	86	85	88	74	81	80
Manufacturing	83	69	94	95	60	51	54	49	52	51	46	41	32	35	45	52	43	44	51	33	41	52
Transport and freight handling	22	9	12	6	20	8	7	7	16	14	7	8	11	6	9	16	8	15	14	7	23	15
Others	49	35	47	49	50	42	46	39	41	27	51	47	30	38	41	35	45	41	43	52	38	48

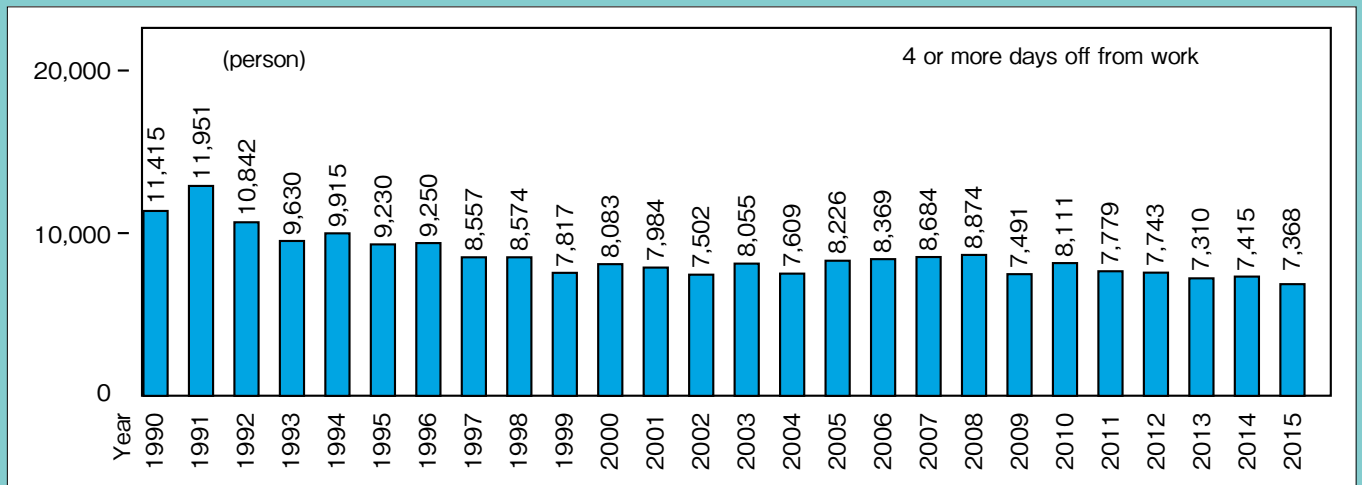
	1995	1996	1997	1998	1999	2000	2001	2002	2003	2004	2005	2006	2007	2008	2009	2010	2011	2012	2013	2014	2015
All industries	228	218	227	201	214	230	225	231	249	274	265	318	293	281	228	245	255	284	244	292	278
Construction	97	94	83	95	79	85	88	82	88	89	93	120	104	93	75	87	105	95	93	130	111
Manufacturing	45	46	66	45	44	56	54	45	38	64	56	62	61	58	55	49	49	45	34	59	50
Transport and freight handling	20	15	18	24	28	27	28	27	33	34	37	32	33	13	21	24	27	24	21	19	18
Others	66	63	60	37	63	62	55	77	90	87	79	104	95	117	77	85	110	84	96	84	99

(person)

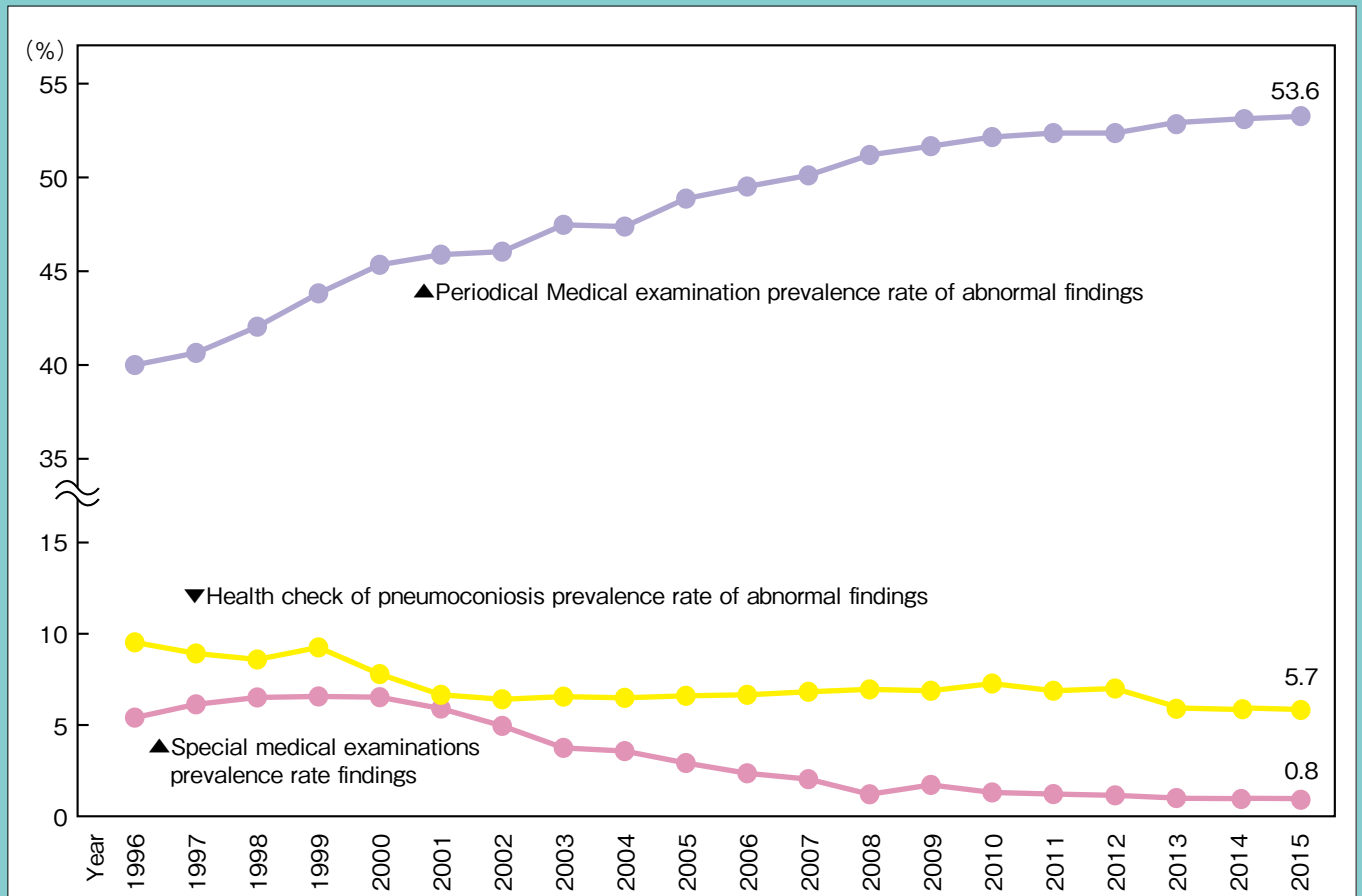


Note: "Serious industrial accident" signifies an accident resulting in 3 more deaths and/or injuries at a time.

Change in Number of Occupational Diseases (Japan)



Prevalence rate of abnormal findings of periodical medical examination (Japan)



Note: Sources of above statistics come from those of the MHLW