

JISHA
Occupational Safety and Health
Seminar – FY 2015

14 – 18 March 2016

TSANG HUNG KEI, RICKY
OCCUPATIONAL SAFETY AND HEALTH COUNCIL,
HONG KONG

About Us

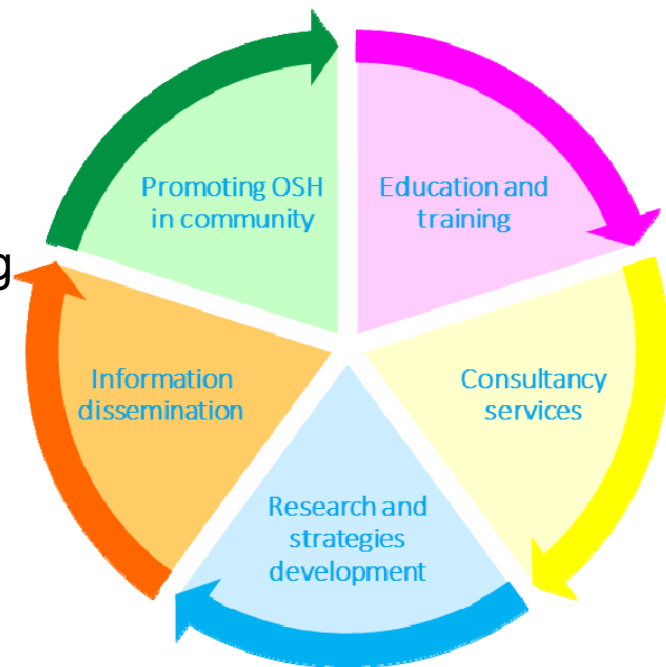


OCCUPATIONAL SAFETY AND HEALTH COUNCIL (OSHC)

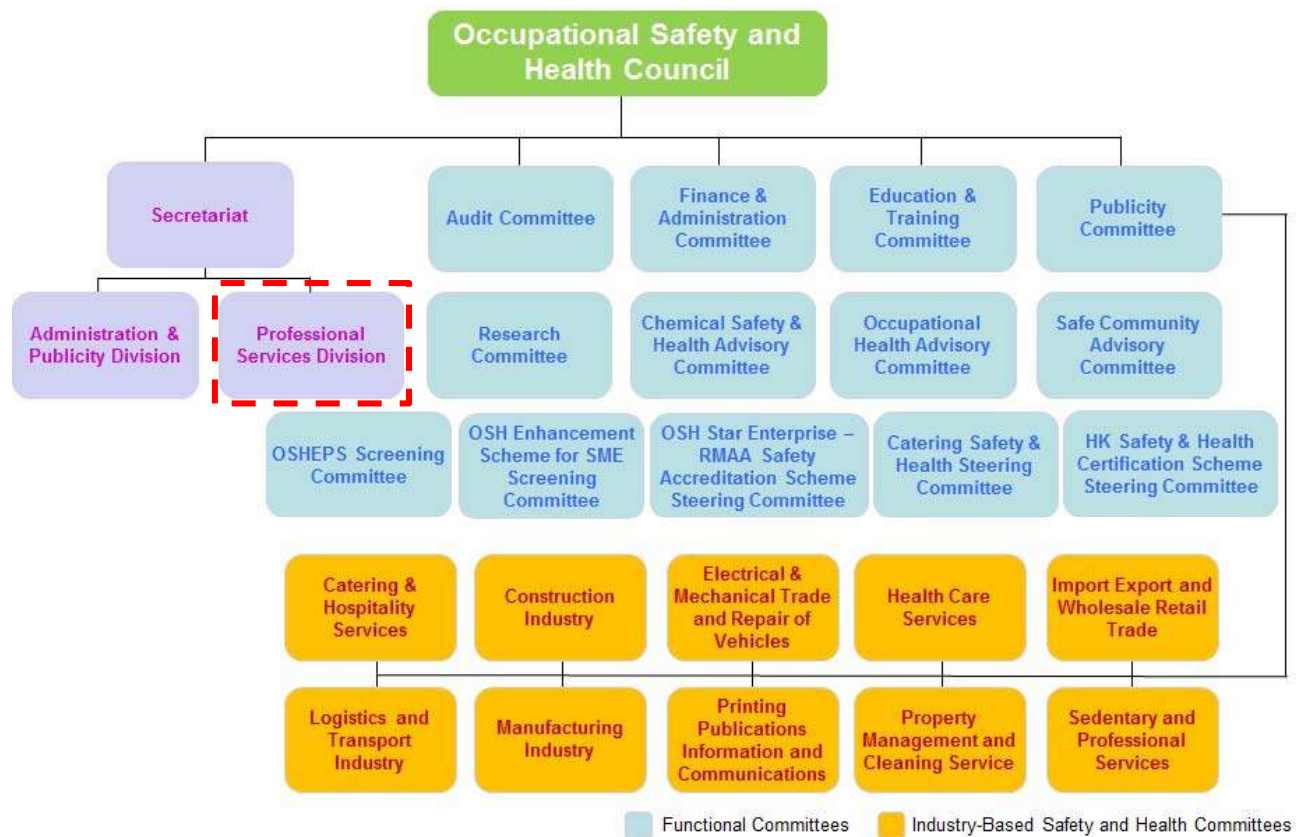
- Established in 1988 as a statutory body (Chapter 398, Laws of Hong Kong)

Objectives:

- Promote safety and health at work
- Sustaining valuable workforce in Hong Kong



OSHC Organisation Chart



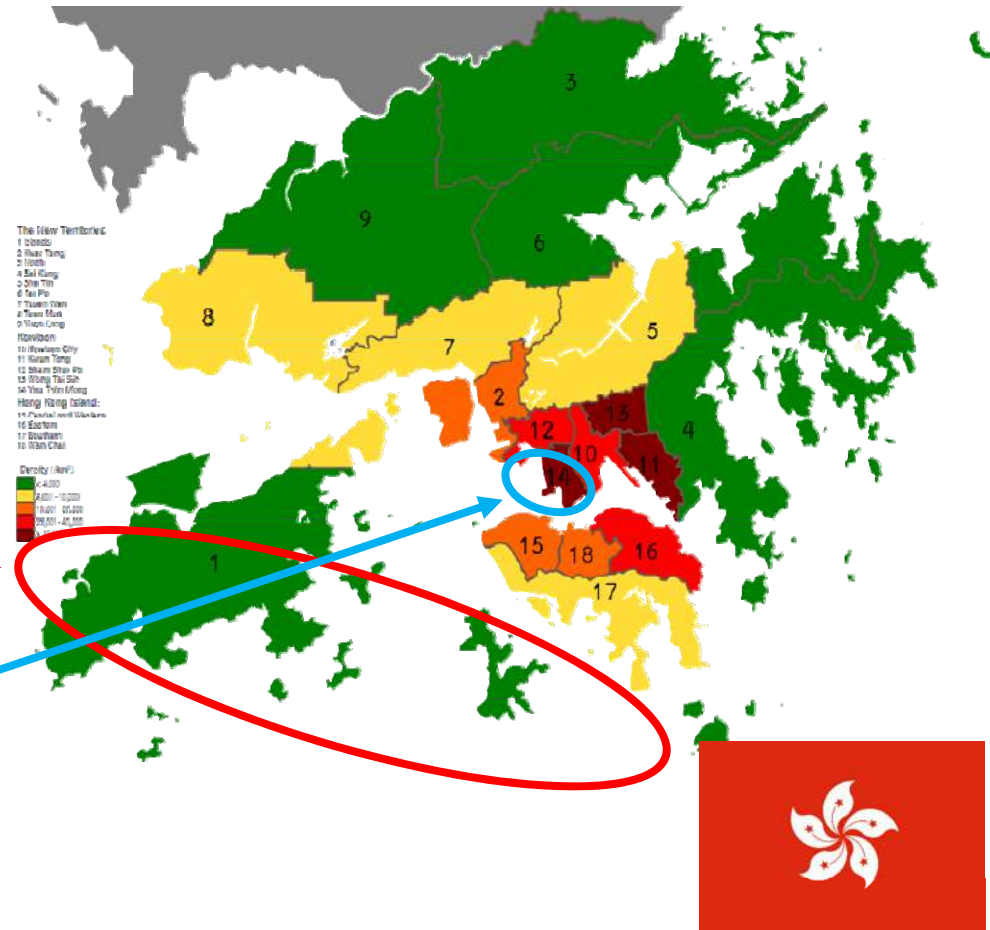
Background Information of Hong Kong

➤ Consists of three regions

- Hong Kong Island
- Kowloon, and
- New Territories

➤ Divided into 18 districts

- Largest:
Islands district
- Smallest:
Yau Tsim Mong District



Background Information of Hong Kong

Statistics in Hong Kong (as at 2014.12.31)

Total Area	2,755.03 km ²
<i>Land area</i>	<i>1,105.62 km²</i>
<i>Sea area (Including Victoria Harbour)</i>	<i>1,649.41 km²</i>
Population	7,266,500
<i>Total labour force</i>	<i>3,929,300</i>
<i>Labour force working in construction sites</i>	<i>82,795</i>

Sources: Lands Department, Census and Statistics Department and Labour Department, Hong Kong

Major Infrastructure in Hong Kong

Extension of MTR system



Major Infrastructure in Hong Kong

Extension of Hong Kong International Airport to a three-runway system



Major Infrastructure in Hong Kong

Hong Kong – Zhuhai – Macao Bridge (HZMB Project)

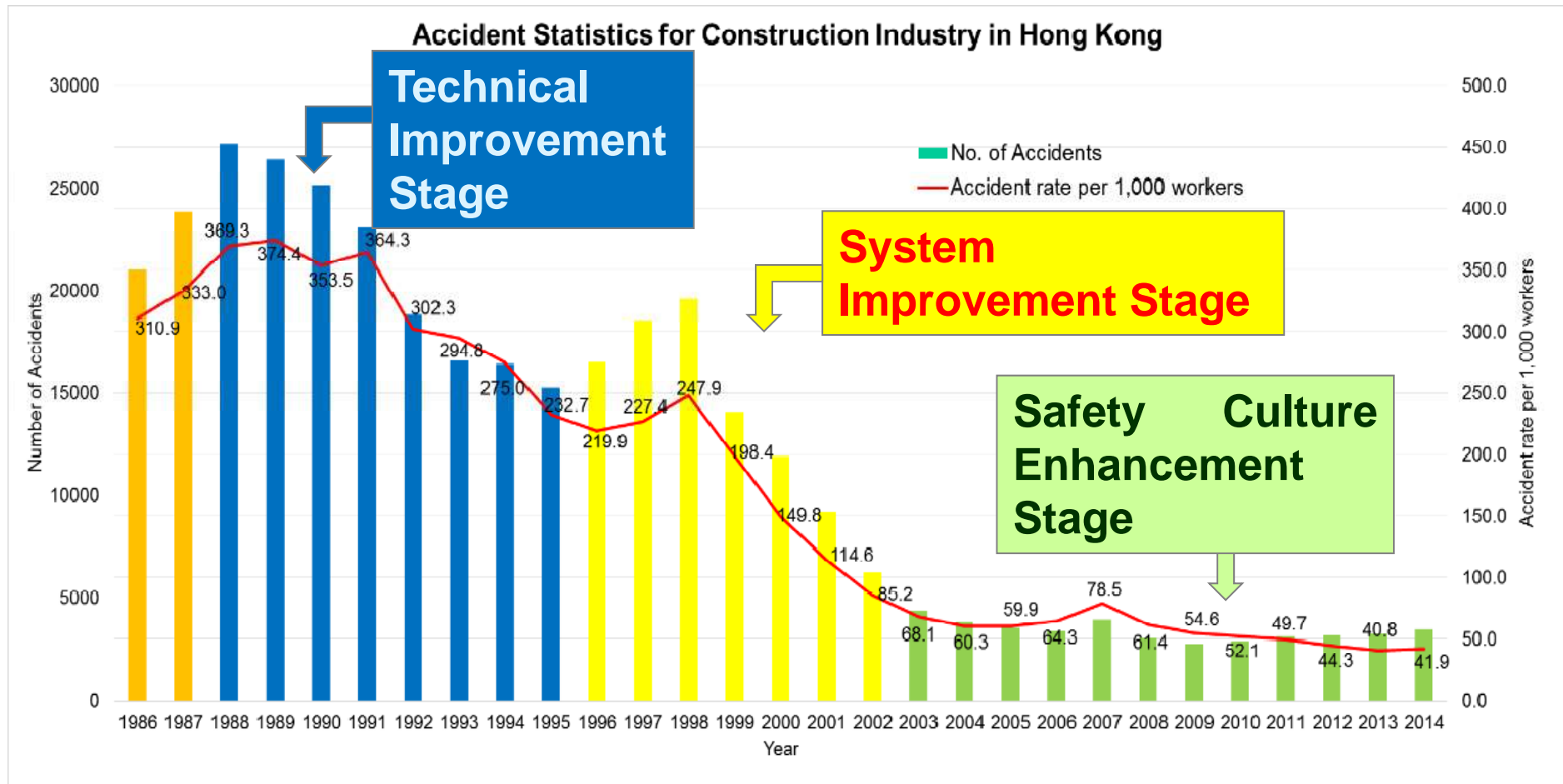


Sources: Highways Department, Hong Kong

Latest Satellite View of the Bridge (From Google Map)



Accident Statistics for Construction Industry in Hong Kong



Calculation of Accident rate per 1,000 workers:

$$\left[\frac{\text{Number of industrial accidents}}{\text{Employment size}} \right] \times 1,000$$

Accident Statistics for All Industries in Hong Kong (2009 – 2014)

	2009	2010	2011	2012	2013	2014
No. of Accidents 意外數目	13 600	14 015	13 658	12 547	11 820	11 677
No. of Fatalities 致命意外數目	21	18	29	29	28	25
Employment Size 受僱人數	552 773	562 104	579 875	589 504	602 255	613 841
Acc. rate/1 000 Workers 每1 000工人計的意外率	24.6	24.9	23.6	21.3	19.6	19.0
Fatality rate/1 000 Workers 每1 000工人計的致命意外率	0.038	0.032	0.050	0.049	0.046	0.041

◆ Employment size ↑

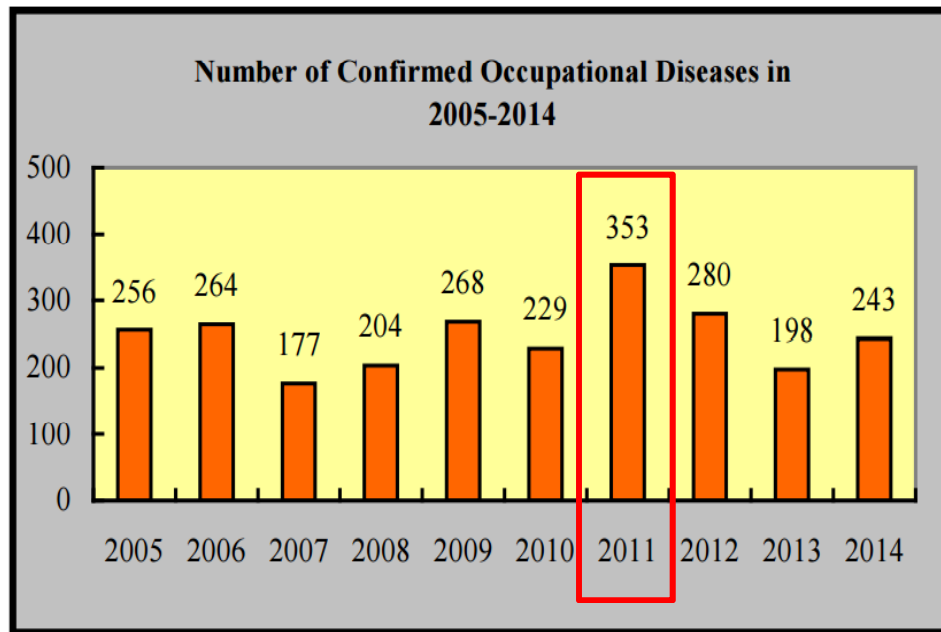
◆ Number of accidents ↓



Calculation of Accident rate per 1,000 workers:

$$[(\text{Number of accidents} / \text{Employment size})] \times 1,000$$

Number of Confirmed Occupational Diseases in Hong Kong (2005 – 2014)



Sources: Labour Department, Hong Kong

Number of Confirmed Occupational Diseases in 2014	
Occupational Disease	Number
Occupational Deafness	78
Silicosis	68
Tenosynovitis of the Hand or Forearm	64
Mesothelioma	14
Tuberculosis	7
Gas Poisoning	6
Compressed Air Illness	2
Asbestosis	2
Occupational Dermatitis	1
Infection by <i>Streptococcus suis</i>	1
Total	243

OSH-related Legislations in Hong Kong

1. Factories and Industrial Undertakings Ordinance (F&IUO) (Chapter 59)

- 30 sets of subsidiary regulations covering various aspects of hazardous work activities in different industrial undertakings

2. Occupational Safety and Health Ordinance (OSHO) (Chapter 509)

- 2 subsidiary regulations which provide for safety and health protection in workplaces for both industrial and non-industrial companies

Factories and Industrial Undertakings Ordinance (F&IUO)

- ◆ The Coverage
 - Applies to **industrial undertakings**, i.e. factories, construction sites, catering establishments, cargo and container handling undertakings, repair workshops and other industrial workplaces
- ◆ This ordinance imposes general duties on proprietors and persons employed (i.e. **employees**) at industrial undertakings to ensure safety and health at work.

Occupational Safety and Health Ordinance (OSHO)

- ◆ The Coverage
 - Applies to almost all workplaces – both **industrial and non-industrial** such as offices, laboratories, shopping arcades, educational institutions, etc.
- ◆ The identity of “Occupiers” was introduced in OSHO to ensure that
 1. The premises
 2. The means of access and egress from the premises
 3. Any plant or substance kept at the premisesare safe and without risks to health to any person working in the premises **even if they do not directly employ that person to premises**

Occupational Safety and Health Ordinance (OSHO)

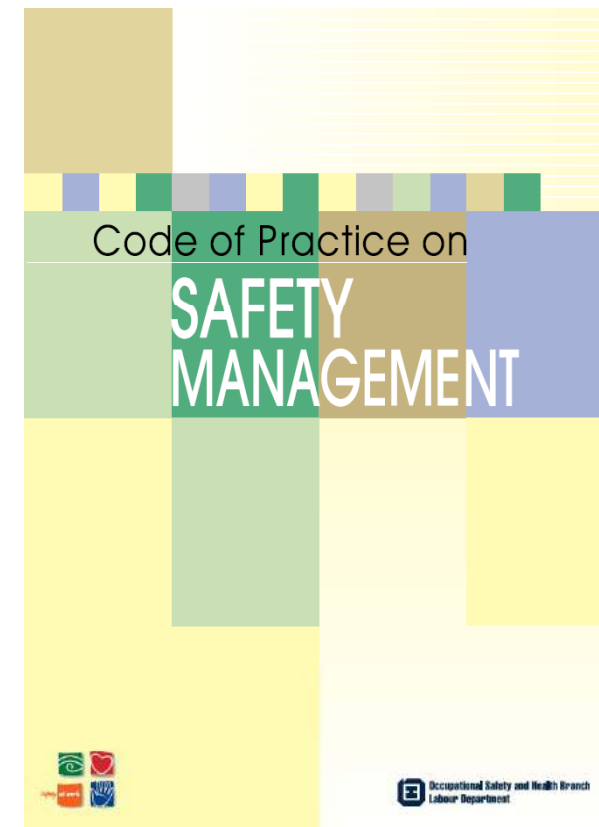
Examples of “Occupiers” under OSHO



Selling counters in a department store

Occupational Safety and Health Management System (OSHMS) in Hong Kong

- ◆ In 1999, Hong Kong Legislative Council resolved to approve the “Factories and Industrial Undertakings (Safety Management) Regulation” (Chapter 59AF) (*F&IU (SM) Regulations*) and came to effect in 2002.
- ◆ The Regulation requires proprietors and contactors to implement safety management system and conduct basic safety reviews in construction sites.



Occupational Safety and Health Management System (OSHMS) in Hong Kong

14 elements in a Safety Management System (SMS)

1. Safety Policy
2. Organisational Structure
3. Safety Training
4. In-house Safety Rules
5. Inspection Programme
6. Hazard Control Programme
7. Accident / Incident Investigation
8. Emergency Preparedness
9. Evaluation, selection and control of subcontractors
10. Safety Committee
11. Job hazard analysis
12. Safety and health promotion
13. Accident control and hazard elimination (Process control)
14. Occupational health assurance programme

Occupational Safety and Health Management System (OSHMS) in Hong Kong

According to F&IU (SM) Regulations:

For a construction site:

First 8 elements should be implemented if

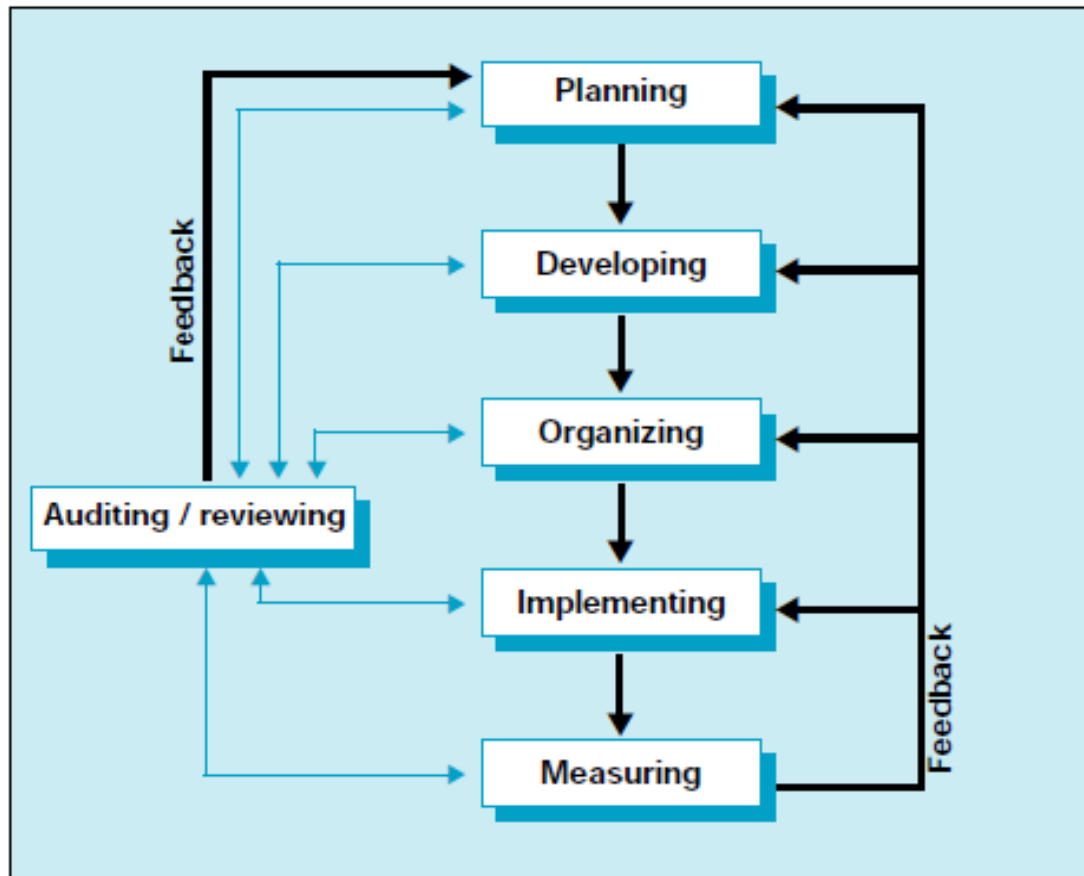
- Number of employees **between 50 – 99**

First 10 elements should be implemented if

- Number of employees **≥ 100**
- A contract value of **HK\$100,000,000 or more**.



Occupational Safety and Health Management System (OSHMS) in Hong Kong

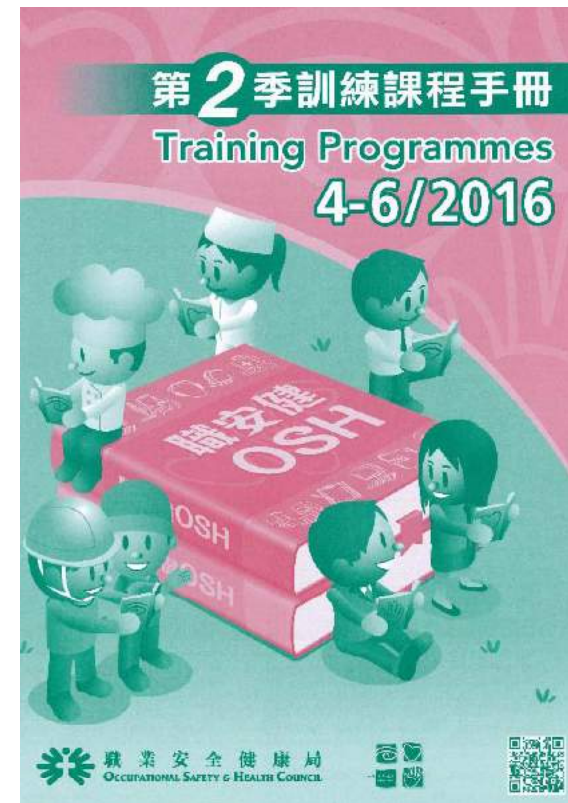


Legend

- Information link
- Control link

Training / Education Programme regarding OSHMS

- ◆ OSHC is one of the a major OSH training providers in Hong Kong
- ◆ Basic safety management
 - For frontline staff
- ◆ Occupational Safety Management
 - For managerial staff



Training / Education Programme regarding OSHMS

Professional Diploma in Applied Occupational Safety and Health (PDAOSH)

- ◆ A new programme organized by OSHC (1st intake in 01 Mar 2016)
- ◆ Designed for those who are interested in acquiring professional knowledge in OSH
- ◆ Holders of PDAOSH with relevant **experience of not less than 2 years** will meet the requirement for registration as a **Safety Officer (RSO)** in Labour Department of Hong Kong under “Factories and Industrial Undertakings (Safety Officers and Safety Supervisors) Regulation”

The advertisement features the logos of the Occupational Safety & Health Council (OSHC), Qualifications Framework, and Continuing Education Fund. The main title is 'Professional Diploma in Applied Occupational Safety and Health Programme'. Key details include: 'Recognised by the Labour Department', 'Application Deadline: 31 January 2016', and 'Programme Commencement: 1 March 2016'. The central image shows three people (two men and one woman) in professional and industrial attire, with a large '0' graphic and the slogan 'Your first step to becoming a safety professional and starting a rewarding career' and '職安專才 造福未來'. Contact information at the bottom includes phone numbers (3106 5631 / 3106 5630 / 3106 2000), email (trg@oshc.org.hk), and website (www.oshc.org.hk). A QR code and a note about CEU reimbursement are also present.

Conclusion

- Hong Kong's industrial safety performance has been improving steadily during the decades
- Focus more on establishing safety culture within the industry
- OSHC Roles:
 - Continue to provide OSH training
 - Provide professional consultancy services
 - Enhancement of safety and health promotion

References

- Employees' Compensation Ordinance (Chapter 282) (1953), Department of Justice Hong Kong.
- Factories and Industrial Undertakings Ordinance (Chapter 59) (1955), Department of Justice, Hong Kong.
- Factories and Industrial Undertakings (Safety Management) Regulation (Chapter 59AF) (1999), Department of Justice, Hong Kong.
- Factories and Industrial Undertakings (Safety Officers and Safety Supervisors) Regulation (Chapter 59Z) (1986), Department of Justice, Hong Kong.
- Labour Department, Hong Kong (2002). Code of Practice on Safety Management. Retrieved from <http://www.labour.gov.hk/eng/public/os/manage.pdf>
- Labour Department, Hong Kong (2015). Occupational Safety and Health Statistics 2014. Retrieved from http://www.labour.gov.hk/eng/osh/pdf/OSH_Statistics_2014_EN.pdf
- Labour Department, Hong Kong (2015). Occupational Safety and Health Statistics Bulletin, Issue No.15. Retrieved from <http://www.labour.gov.hk/eng/osh/pdf/Bulletin2014.pdf>
- Occupational Deafness (Compensation) Ordinance (Chapter 469) (1995), Department of Justice, Hong Kong.
- Occupational Safety and Health Ordinance (Chapter 509) (1997), Department of Justice, Hong Kong.
- Pneumoconiosis and Mesothelioma (Compensation) Ordinance (Chapter 360) (1980), Department of Justice, Hong Kong.

A nighttime photograph of the Hong Kong skyline, featuring the International Finance Centre (IFC) tower and other skyscrapers. In the foreground, a large cargo ship is docked at a pier, with its lights reflecting on the water. The sky is a mix of purple and pink hues.

THANK YOU

<http://www.oshc.org.hk>