



Republic of Mauritius

Country report



The country

- ▶ Capital: **Port Louis**
- ▶ Government type: Republic
- ▶ (independence from UK in 1968 and a republic since 1992)
- ▶ Since June 2015, our president is a lady: Mrs Ameenah Gurib-Fakim
- ▶ Currency: Rupees (Rs) MUR
- ▶ 100JPY=MUR32.23







Presented by Jacques Rohan,
Group Safety & Health Coordinator March 2016



Geography

Location: East South Africa, island in the Indian Ocean, 500 miles east of Madagascar.

Area: 2,040 km² (770 sq. mi.)

Dependencies: Rodrigues Island, the Agalega Islands and Cargados Carajos Shoals;

Mauritius also claims sovereignty over the Chagos Archipelago, part of the British Indian Ocean Territory, where the U.S. Naval Support Facility at Diego Garcia is located.



Mauritius Island



Terrain

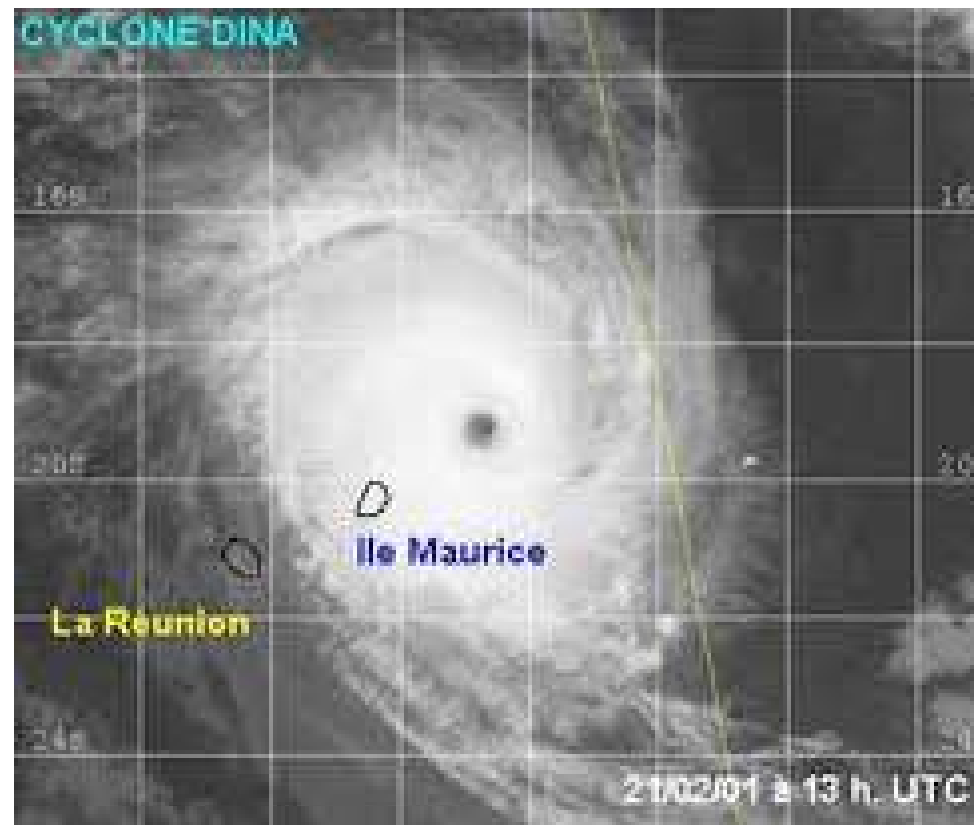
- ▶ A volcanic island with a central plateau rimmed by mountains, the island is surrounded by coral reefs.





Climate

- ▶ Tropical; cyclone season mid-December-April.





People

- ▶ Nationality: Mauritian(s).
Population: 1.3 million (2011)
Ethnic groups: Indo-Mauritians 68%,
 - ▶ Creoles 27%,
 - ▶ Sino-Mauritians 3%,
 - ▶ Franco-Mauritians 2%.

- Religions: Hindu 48%,
 - ▶ Christian 32%, Muslim.



Languages

- ▶ French, English (official),
- ▶ Creole (common),
- ▶ Hindi, Urdu, Hakka, Bhojpuri.

Literacy: 85-90%



Natural resources

- ▶ Arable land, fish.



Agricultural products

- ▶ Sugar,
- ▶ sugar derivatives,
- ▶ tea,
- ▶ tobacco,
- ▶ vegetables,
- ▶ fruits,
- ▶ flowers and
- ▶ fishing.



Industries

- ▶ Labor-intensive goods for export and local market,
- ▶ including textiles and clothing,
- ▶ watches and clocks,
- ▶ jewelry,
- ▶ optical goods,
- ▶ toys and games, and
- ▶ cut flowers;

- ▶ Tourism;
- ▶ Call centres;



Exports

- ▶ clothing and textiles,
- ▶ sugar,
- ▶ Molasses,
- ▶ cut flowers,
- ▶ fish,
- ▶ primates (for research)

▶ Source: <http://www.nationsonline.org/oneworld/mauritius.htm>



Occupational Safety & Health

- ▶ Ministry of Labour and Industrial Relations

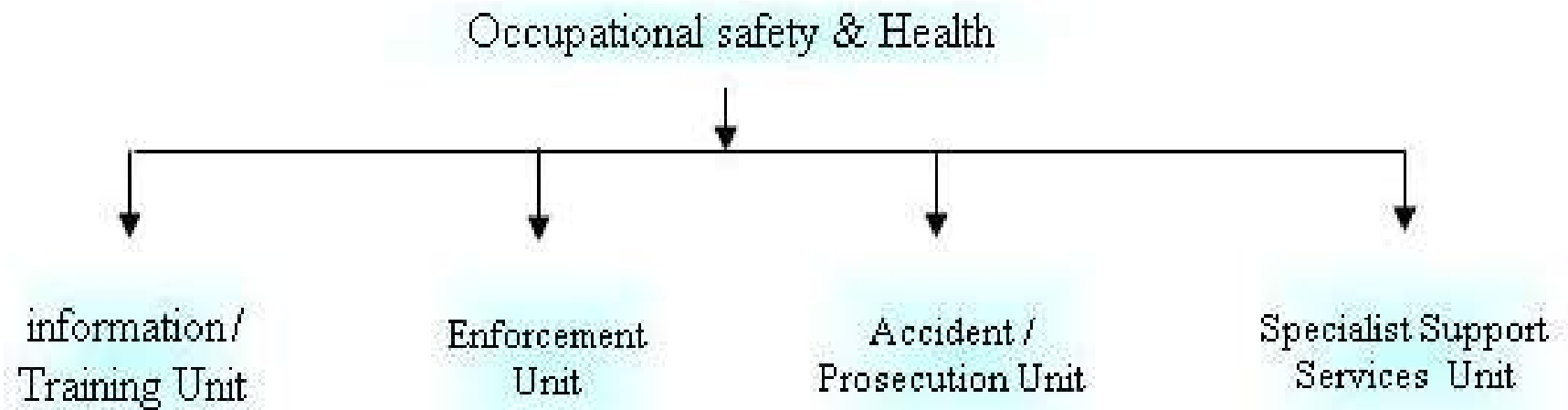
Two departments:

Labour and Industrial Relations

Occupational Health & Safety

But the Enforcing authority:

- Occupational Safety & Health Inspectorate (OSHI)



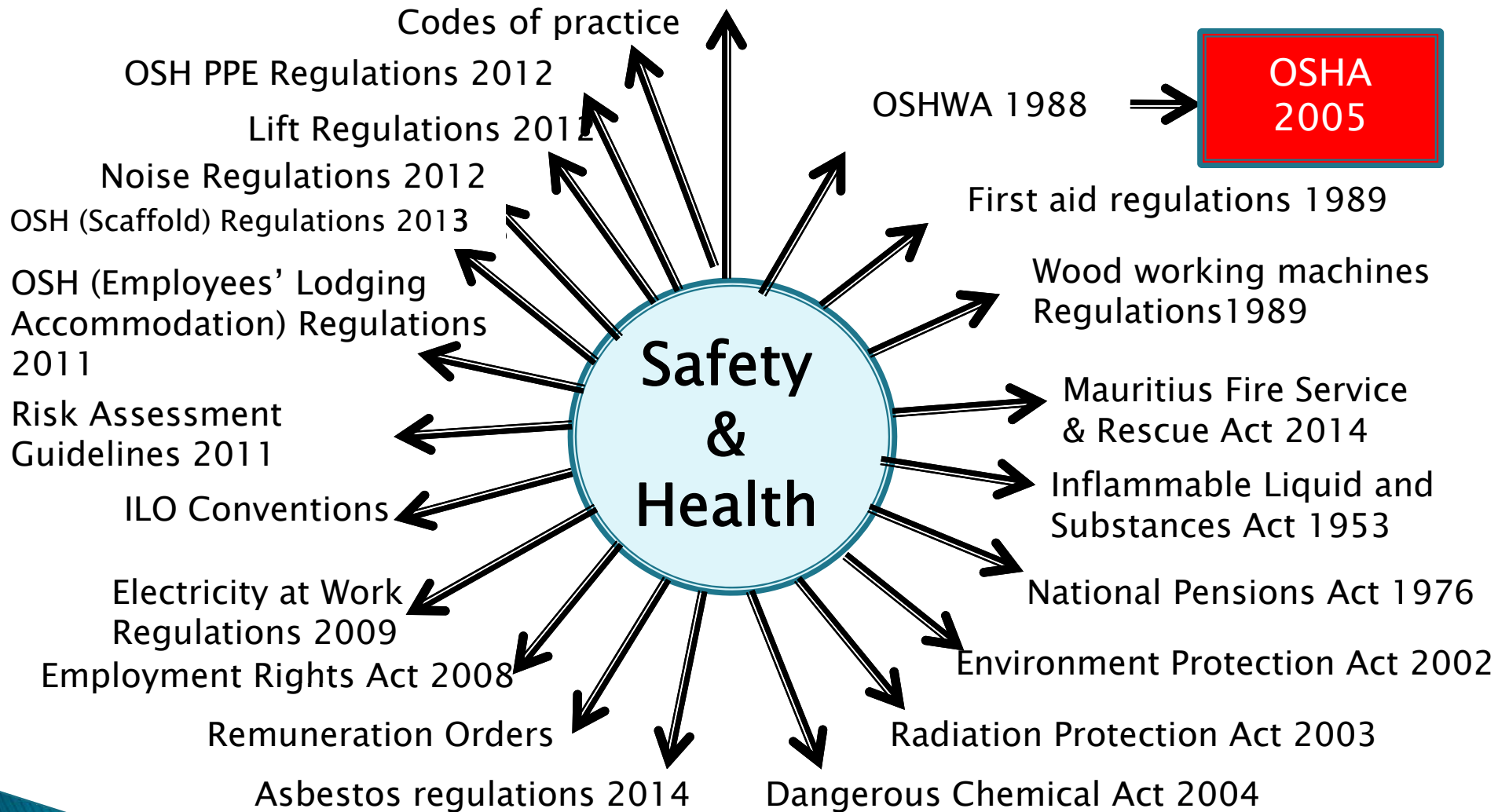


Laws and Regulations

- ▶ Main Law:
- ▶ The Occupational Safety & Health Act 2005
- ▶ +several legislations



Health, Safety & Welfare Regulations (The HSWR) 1980





OSHA 2005

- ▶ Emphasis laid on:
 - ▶ 1. S&H Policy
 - ▶ 2. Risk Assessment
 - ▶ 3. Health Surveillance



Safety & Health Officers

- ▶ Companies with >50 employees must institute S&H committees and
- ▶ Companies with >100 employees must employ a S&H Officer at least on a part-time basis.
- ▶ Companies of >500 employees must employ a full-time SHO.



Advisory Council

- ▶ For the purpose of giving advice and assistance to the Minister in respect of matters affecting the safety, health and welfare of employees at their place of work or lodging accommodation, or any other persons whose safety, health and welfare may be affected by work activities



Advisory Council

- ▶ (2) The Council shall consist of –
 - ▶
 - ▶ (a) a Chairperson who shall be the Director, Occupational Safety and Health or his representative ;
 - ▶
 - ▶ (b) 8 members representing the government;
 - ▶
 - ▶ (c) 8 members representing employers;
 - ▶
 - ▶ (d) 8 members representing employees;
 - ▶
 - ▶ (e) 2 members having wide experience in Occupational Safety and Health;



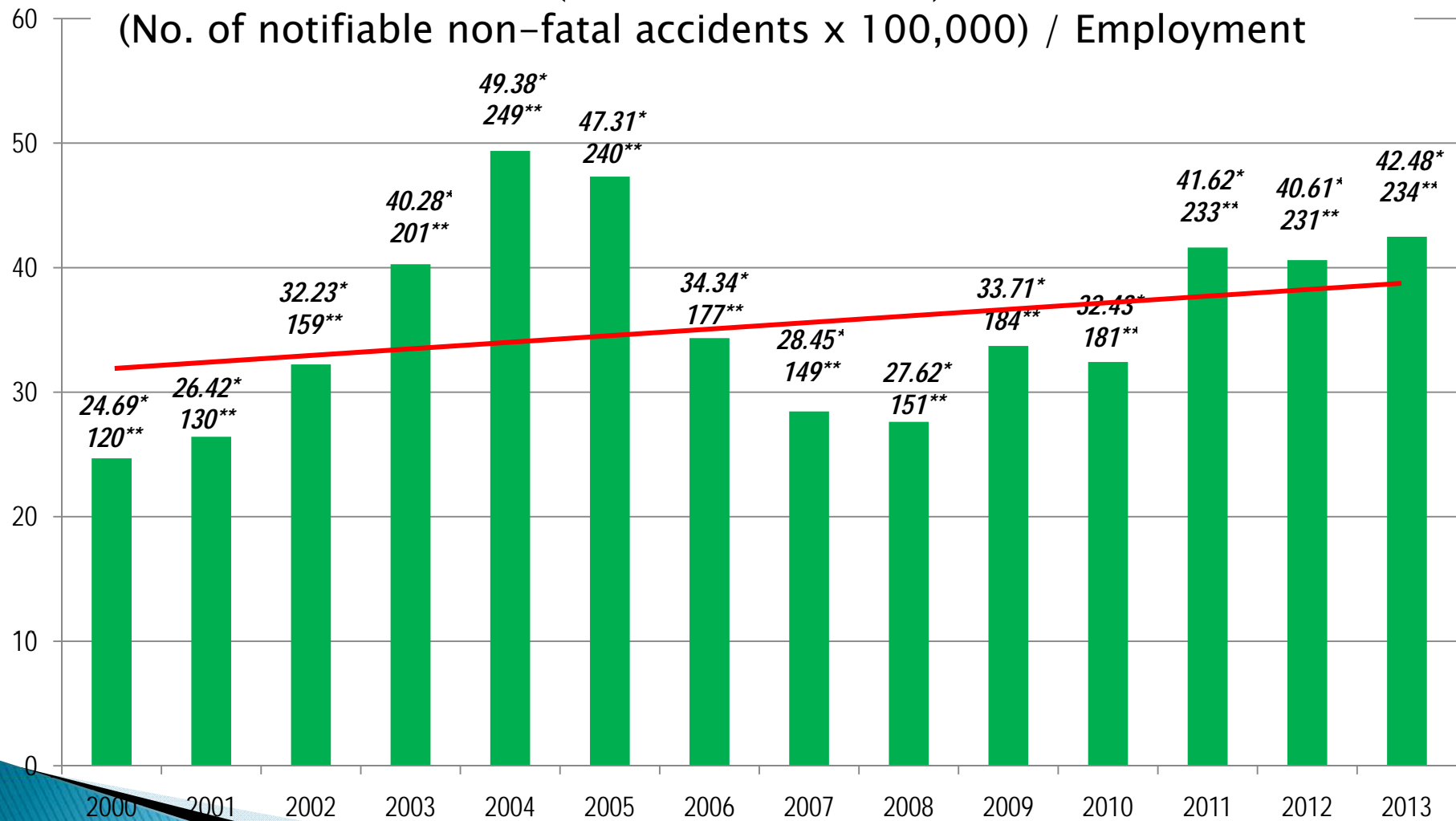
Accidents

- ▶ Fatal_nonfatal Accidents_2000-2013



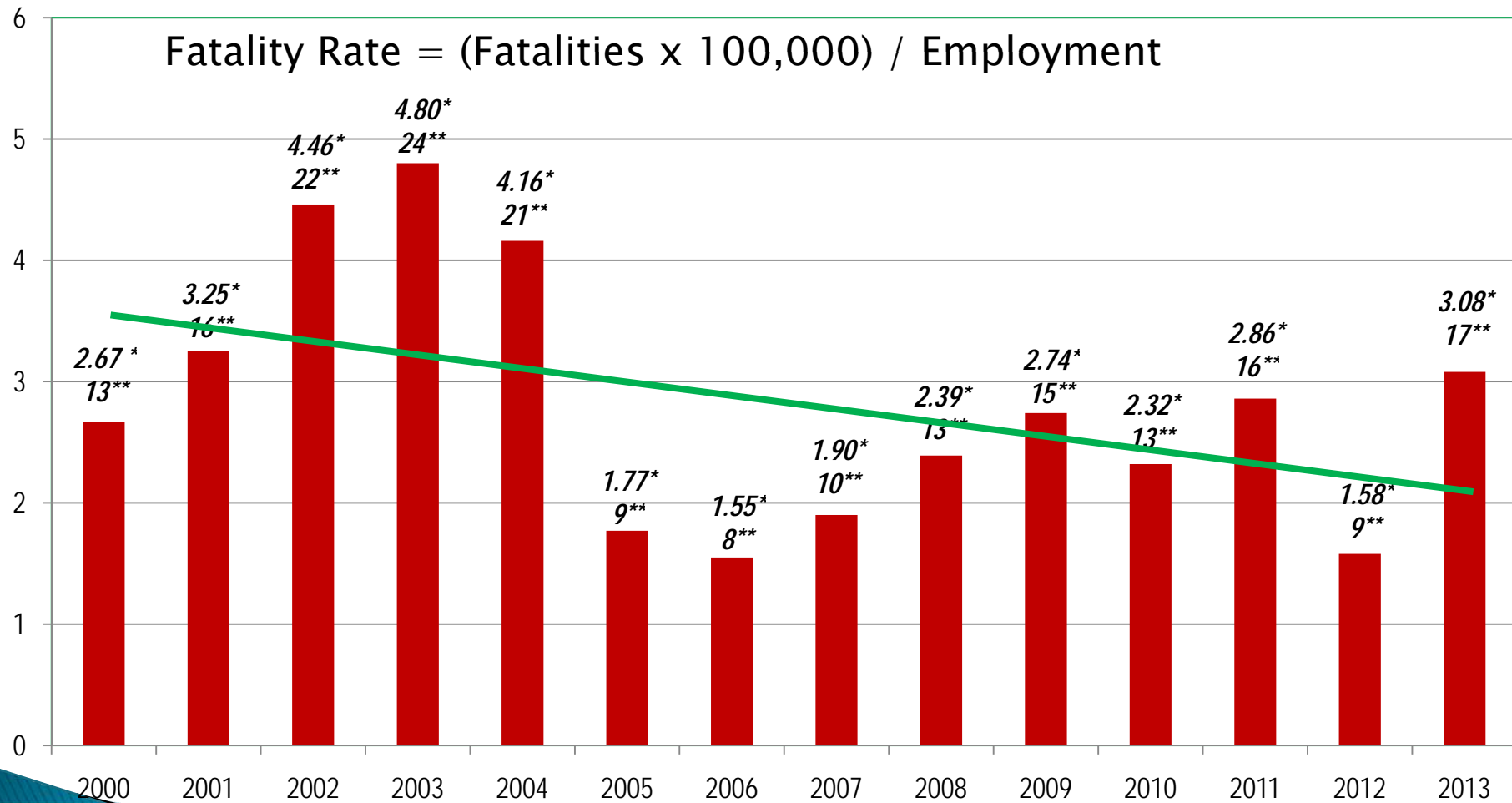
NOTIFIABLE NON-FATAL OCCUPATIONAL ACCIDENTS IN MAURITIUS (2000 TO AS AT 25 NOVEMBER 2013)

Accident incidence rate (notifiable non-fatal) =
(No. of notifiable non-fatal accidents x 100,000) / Employment





NOTIFIABLE *FATAL* OCCUPATIONAL ACCIDENTS IN MAURITIUS (2000 TO 2013)





OSHI- STATISTICS OF ACCIDENTS AT WORK – NON FATAL

Economic Activities	2007	2008	2009	2010
	Notifiable	Notifiable	Notifiable	Notifiable
Agriculture, hunting and forestry	16	15	25	18
Fishing	1	1	1	2
Mining and quarrying	0	0	0	0
Manufacturing (EPZ and non EPZ)	54	50	56	55
Electricity, gas and water supply	4	3	6	4
Construction	30	35	40	38
Wholesale and retail trade, repair of motor vehicles, motorcycles and personal and household goods	9	5	3	6
Hotels and restaurants	11	6	14	17
Transport, storage and communication	8	7	18	10



Economic Activities	2007	2008	2009	2010
	Notifiable	Notifiable	Notifiable	Notifiable
Agriculture, hunting and forestry	16	15	25	18
Fishing	1	1	1	2
Mining and quarrying	0	0	0	0
Manufacturing (EPZ and non EPZ)	54	50	56	55
Electricity, gas and water supply	4	3	6	4
Construction	30	35	40	38
Wholesale and retail trade, repair of motor vehicles, motorcycles and personal and household goods	9	5	3	6
Hotels and restaurants	11	6	14	17
Transport, storage and communication	8	7	18	10
Financial intermediation	0	0	0	0
Real estate, renting and business activities	8	4	5	17
Public administration, defence and compulsory social security	8	18	8	11
Education	0	1	1	0
Health and social work	0	0	0	1
Other community, social and personal service services	0	6	7	2
Private households with employed persons	0	0	0	0
Extraterritorial organizations and bodies	0	0	0	0
Not classifiable by economic activities	0	0	0	0
SUB TOTAL	149	151	184	181



OSHI-STATISTICS OF ACCIDENTS AT WORK – FATAL

Economic Activities	2007	2008	2009	2010
Agriculture, hunting and forestry	0	2	1	0
Fishing	0	0	0	0
Mining and quarrying	0	0	0	0
Manufacturing (EPZ and non EPZ)	3	2	0	2
Electricity, gas and water supply	0	0	0	0
Construction	7	7	10	9
Wholesale and retail trade, repair of motor vehicles, motorcycles and personal and household goods	0	0	0	0
Hotels and restaurants	0	0	0	0
Transport, storage and communication	0	2	0	0



OSHI-STATISTICS OF ACCIDENTS AT WORK – FATAL

Economic Activities	2007	2008	2009	2010
Agriculture, hunting and forestry	0	2	1	0
Fishing	0	0	0	0
Mining and quarrying	0	0	0	0
Manufacturing (EPZ and non EPZ)	3	2	0	2
Electricity, gas and water supply	0	0	0	0
Construction	7	7	10	9
Wholesale and retail trade, repair of motor vehicles, motorcycles and personal and household goods	0	0	0	0
Hotels and restaurants	0	0	0	0
Transport, storage and communication	0	2	0	0
Financial intermediation	0	0	0	0
Real estate, renting and business activities	0	0	0	1
Public administration, defence and compulsory social security	0	0	2	0
Education	0	0	1	0
Health and social work	0	0	0	0



OSHI-STATISTICS OF ACCIDENTS AT WORK – FATAL

Economic Activities	2007	2008	2009	2010
Agriculture, hunting and forestry	0	2	1	0
Fishing	0	0	0	0
Mining and quarrying	0	0	0	0
Manufacturing (EPZ and non EPZ)	3	2	0	2
Electricity, gas and water supply	0	0	0	0
Construction	7	7	10	9
Wholesale and retail trade, repair of motor vehicles, motorcycles and personal and household goods	0	0	0	0
Hotels and restaurants	0	0	0	0
Transport, storage and communication	0	2	0	0
Financial intermediation	0	0	0	0
Real estate, renting and business activities	0	0	0	1
Public administration, defence and compulsory social security	0	0	2	0
Education	0	0	1	0
Health and social work	0	0	0	0
Other community, social and personal service services	0	0	0	0
Private households with employed persons	0	0	1	1
Extraterritorial organizations and bodies	0	0	0	0
Not classifiable by economic activities	0	0	0	0
SUB TOTAL	10	13	15	13



OCCUPATIONAL SAFETY AND HEALTH INSPECTORATE

ANNUAL REPORTS (2003 TO 2012)

2003	2004	2005	2006	2007	2008	2009	2010	2011	2012
------	------	------	------	------	------	------	------	------	------

1. Registration of factories

Factories registered	4,340	4,306	4,121	4,190	4,161	4,084	4,040	3,968	4,100	4,135
----------------------	-------	-------	-------	-------	-------	-------	-------	-------	-------	-------

2. Accidents

Notifiable fatal accidents	24	21	9	8	10	13	15	13	16	9
Notifiable non-fatal accidents	201	249	240	177	149	151	184	181	233	231
Non-notifiable accidents	308	315	153	249	322	445	227	81	91	123
TOTAL	533	585	402	434	481	609	426	275	340	363
Dangerous occurrences										5

3. Inspections

Places of work	5,001	3,443	3,631	5,406	3,904	2,786	1,873	2,179	2,229	1,254
Employees' Lodging Accommodation	-	-	-	-	-	-	-	-	728	1,774
Specialist Support Services Unit	-	-	-	-	-	-	-	-	-	322
TOTAL	5,001	3,443	3,631	5,406	3,904	2,786	1,873	2,179	2,957	3,350

4. Complaints investigated into and action taken

Places of work	151	191	168	149	114	122	129	123	146	140
Employees' Lodging Accommodation	-	-	-	-	-	-	-	-	38	31
Specialist Support Services Unit	-	-	-	-	-	-	-	-	-	15
TOTAL	151	191	168	149	114	122	129	123	184	186



OCCUPATIONAL SAFETY AND HEALTH INSPECTORATE

ANNUAL REPORTS (2003 TO 2012)

	2003	2004	2005	2006	2007	2008	2009	2010	2011	2012
1. Registration of factories										
Factories registered	4,340	4,306	4,121	4,190	4,161	4,084	4,040	3,968	4,100	4,135
2. Accidents										
Notifiable fatal accidents	24	21	9	8	10	13	15	13	16	9
Notifiable non-fatal accidents	201	249	240	177	149	151	184	181	233	231
Non-notifiable accidents	308	315	153	249	322	445	227	81	91	123
TOTAL	533	585	402	434	481	609	426	275	340	363
Dangerous occurrences										5
3. Inspections										
Places of work	5,001	3,443	3,631	5,406	3,904	2,786	1,873	2,179	2,229	1,254
Employees' Lodging Accommodation	-	-	-	-	-	-	-	-	728	1,774
Specialist Support Services Unit	-	-	-	-	-	-	-	-	-	322
TOTAL	5,001	3,443	3,631	5,406	3,904	2,786	1,873	2,179	2,957	3,350
4. Complaints investigated into and action taken										
Places of work	151	191	168	149	114	122	129	123	146	140
Employees' Lodging Accommodation	-	-	-	-	-	-	-	-	38	31
Specialist Support Services Unit	-	-	-	-	-	-	-	-	-	15
TOTAL	151	191	168	149	114	122	129	123	184	186
5. Talks delivered on occupational safety and health										
At the Occupational Safety and Health Training and Information Centre	215	243	138	121	45	120	84	112	180	185
On site	157	181	154	162	60	61	58	30	45	114
Total Number of persons sensitised	8,135	9,525	7,227	7,377	2,221	4,702	3,694	3,437	4,571	2,824
6. Job Contractor's Permit										
New permits issued	911	338	372	419	373	511	485	522	364	479
Permits renewed	-	-	-	1,201	2,050	2,274	2,814	2,321	2,092	2,541
TOTAL	911	338	372	1,620	2,423	2,785	3,299	2,843	2,456	3,020
7. Registration of Safety and Health Officer										
Certificates issued	78	51	34	42	52	71	110	113	106	113
8. Information requested										
Job Contractor's Permit	1,168	1,262	1,594	1,553	1,171	1,741	1,646	2,446	2,200	1,248
Safety and Health Officer	20	73	61	104	82	333	81	104	89	162
9. Advisory Council for Occupational Safety and Health										
Meetings held	-	-	9	5	9	11	11	11	8	12
Subcommittees held	-	-	-	-	-	8	8	14	3	1
10. Prosecution										
Cases lodged in Court for failure to comply with provisions of the occupational safety and health legislation	152	173	67	145	208	114	105	104	132	139



References

- ▶ <http://labour.govmu.org/English/Publications/Statistics/Pages/Occupational-Safety-and-Health.aspx>