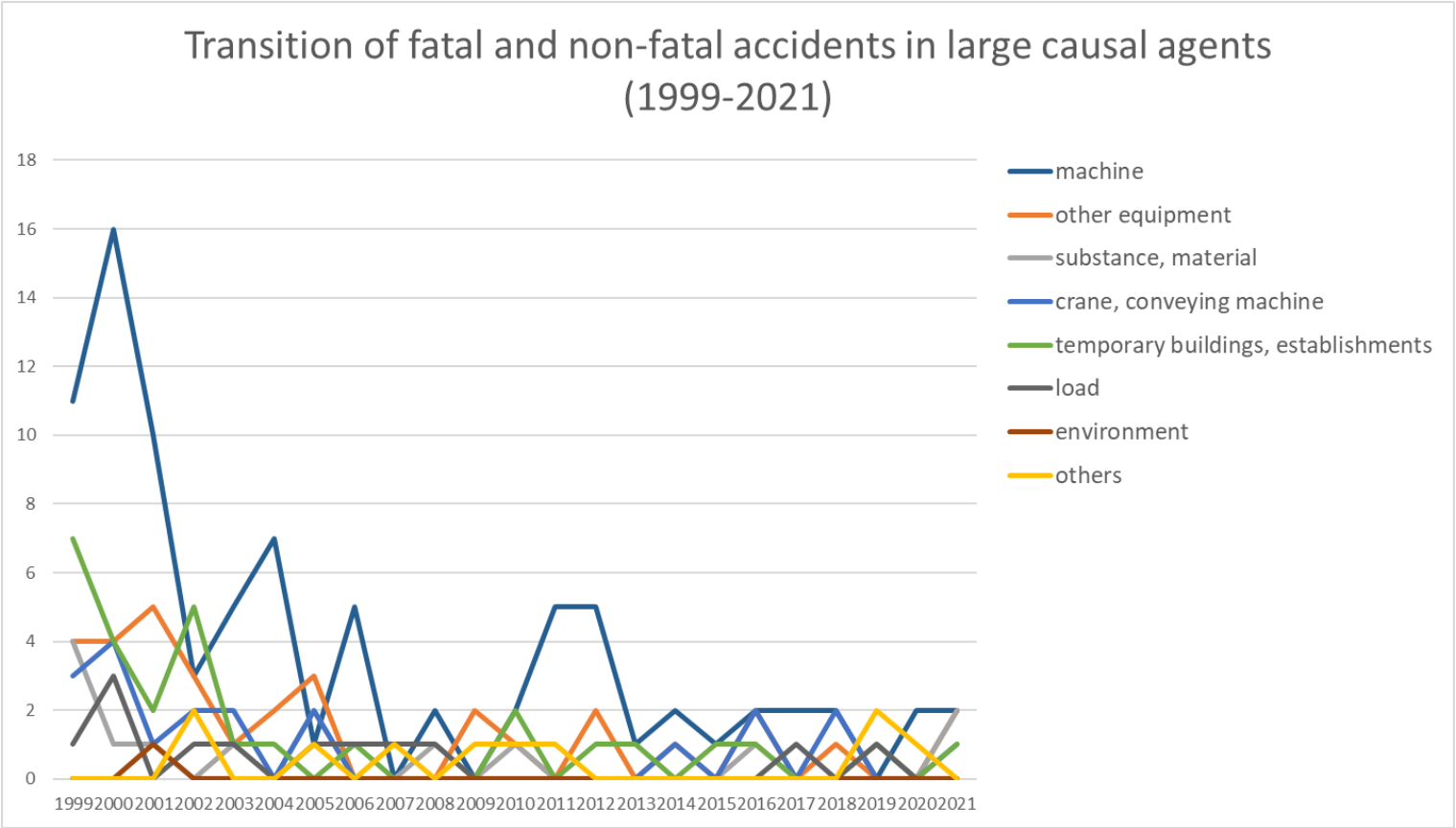
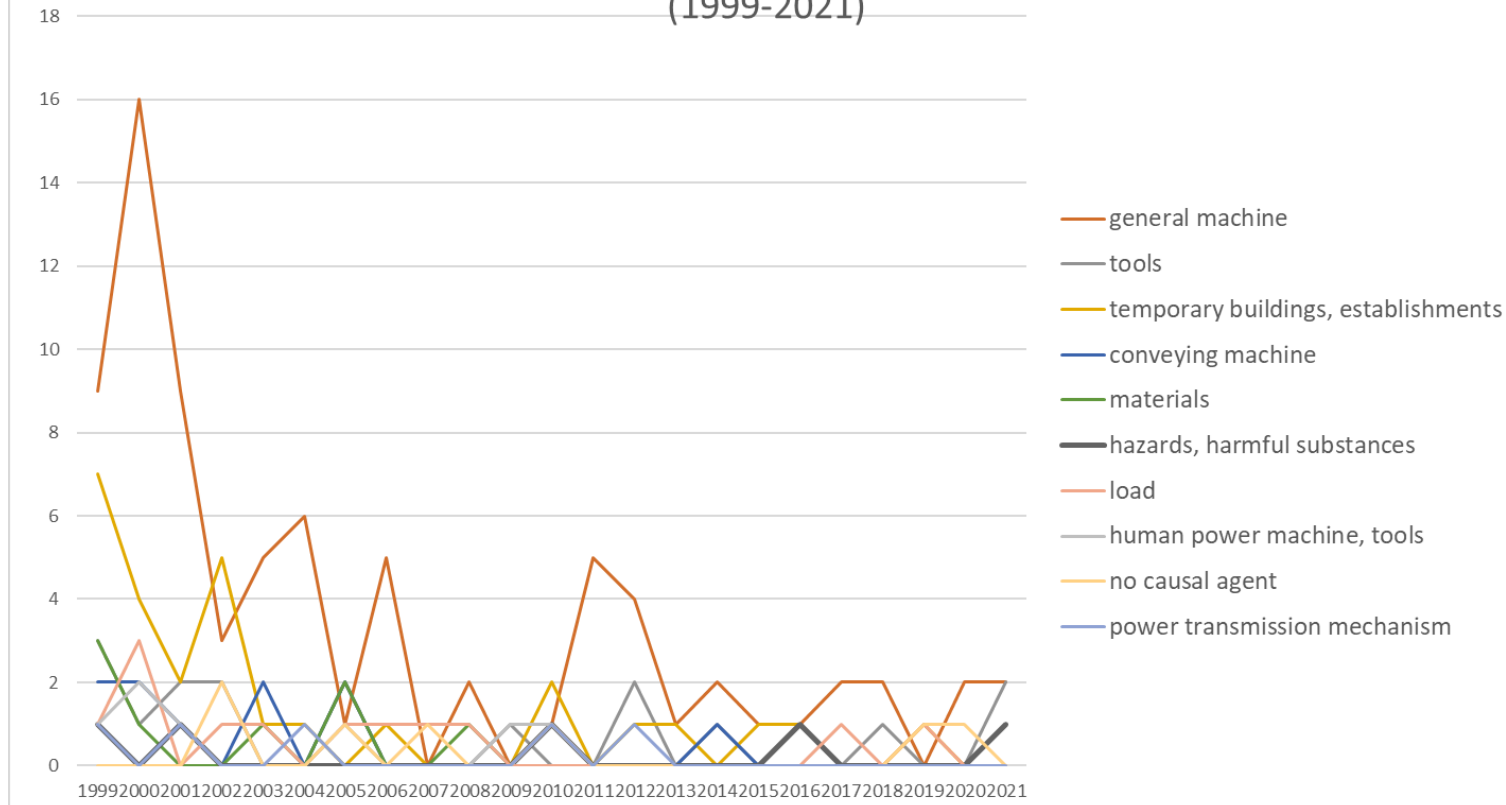


Transition of fatal and non-fatal accidents in each element like as causal agents, type of accidents, etc. in code no. 010201 silk-reeling (1999-2021)



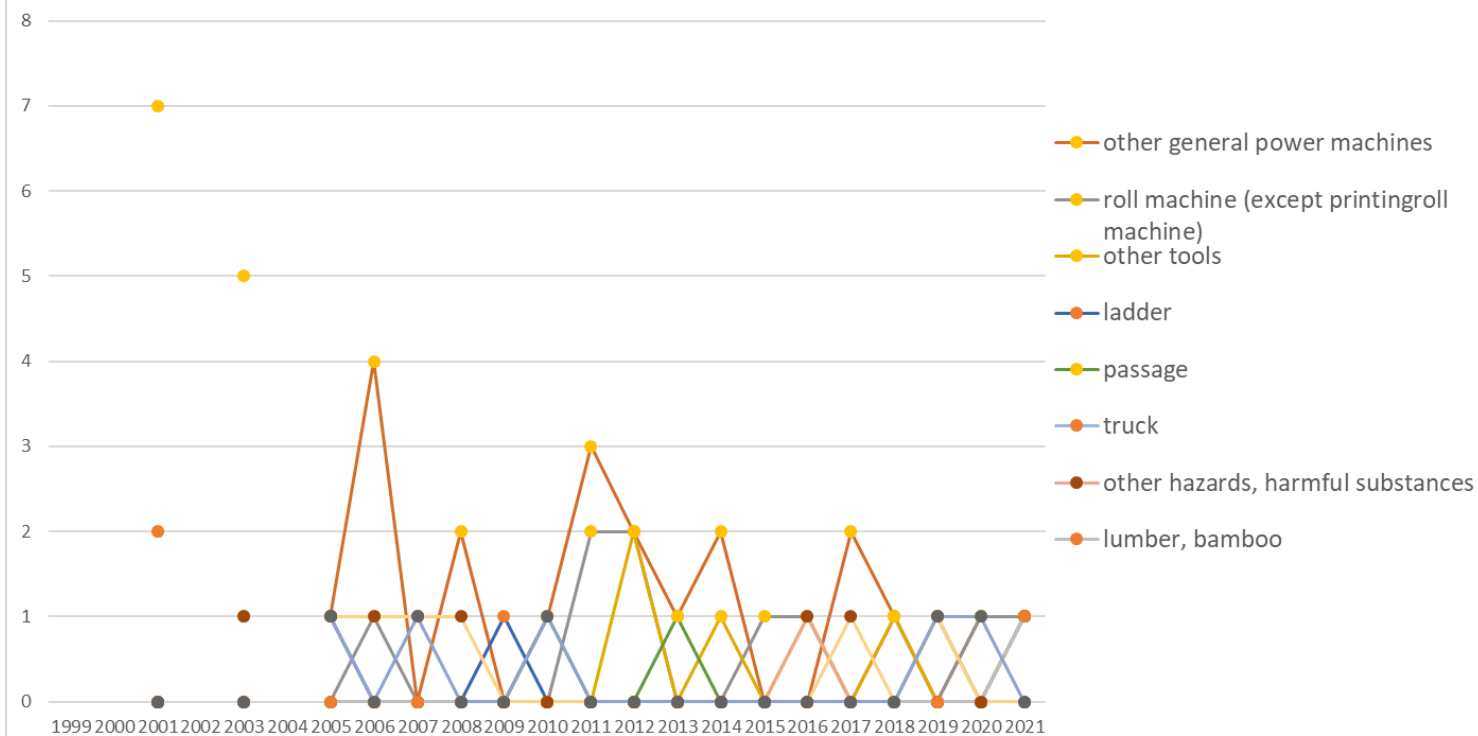
Transition of fatal and non-fatal accidents in large causal agents in code no. 010201 silk-reeling (1999-2021)

Transition of fatal and non-fatal accidents in top 10 middle causal agents
(1999-2021)

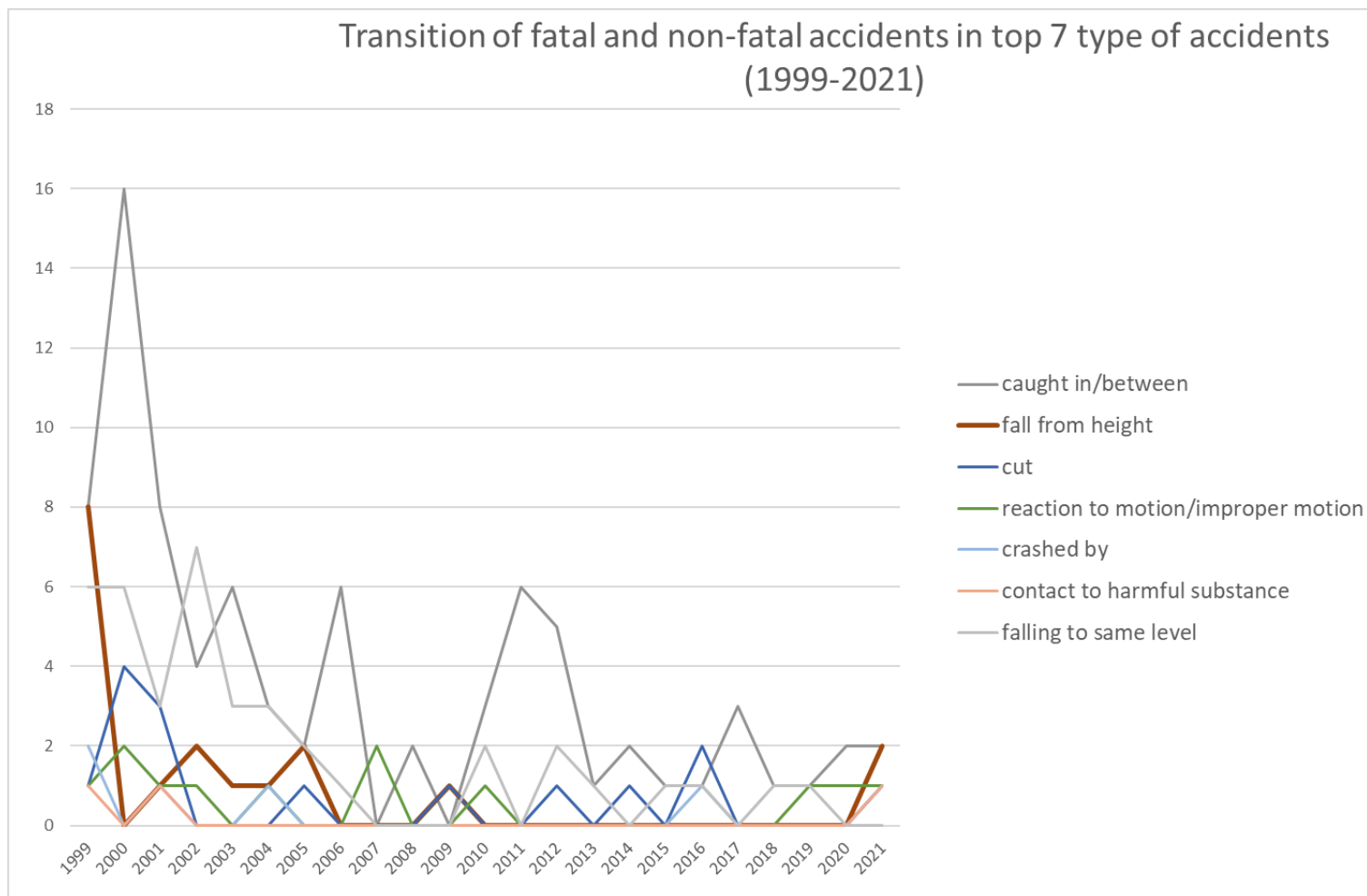


Transition of fatal and non-fatal accidents in middle causal agents in code no. 010201 silk-reeling (1999-2021)

Transition of fatal and non-fatal accidents in top 10 small causal agents
(1999-2021)

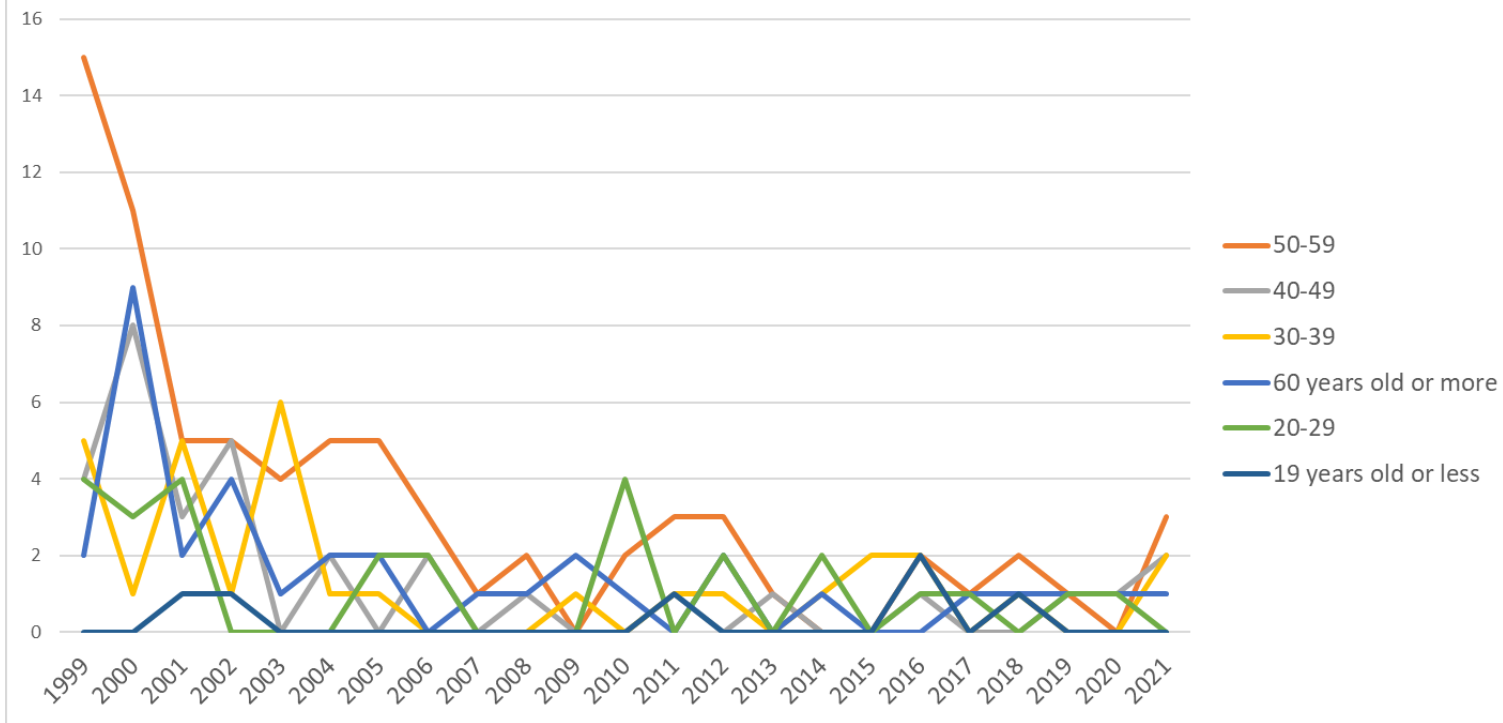


Transition of fatal and non-fatal accidents in small causal agents in code no. 010201 silk-reeling (1999-2021)



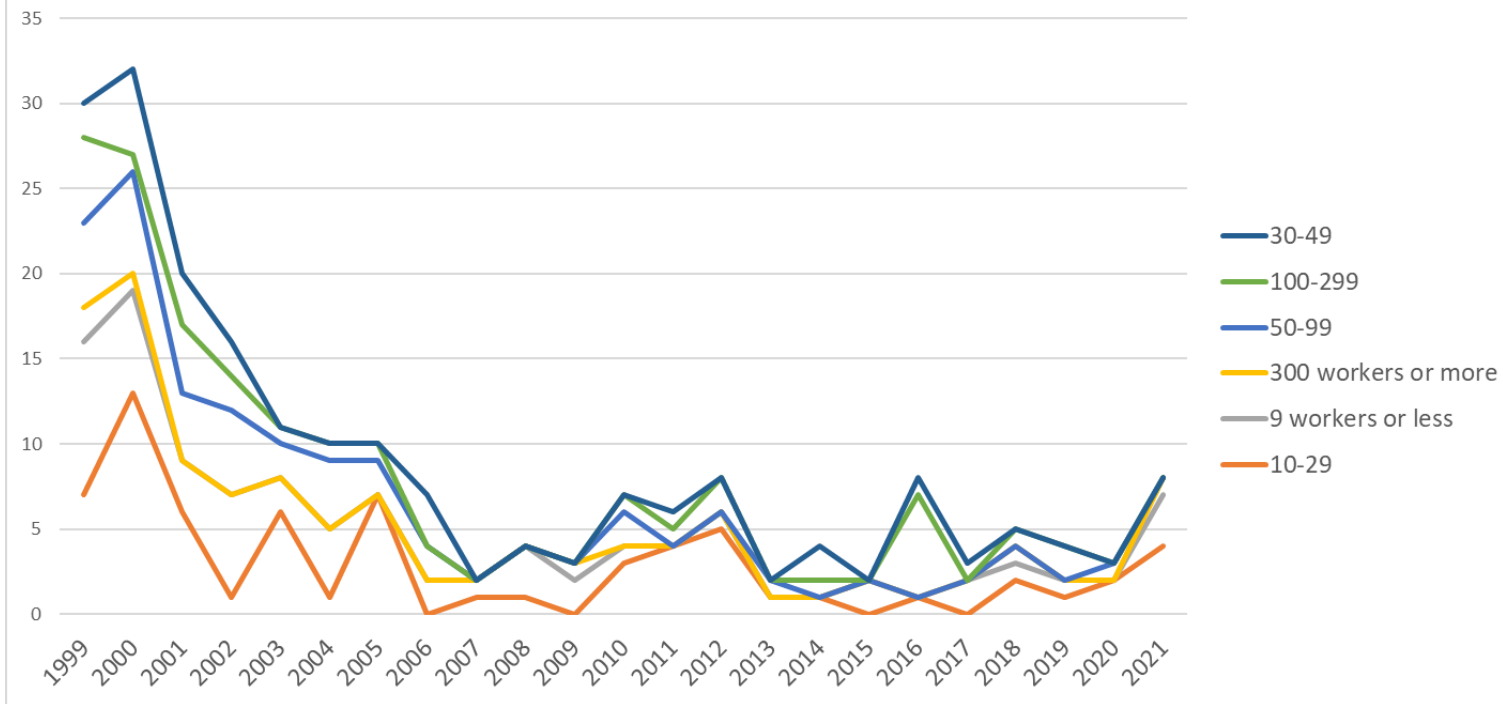
Transition of fatal and non-fatal accidents in type of accidents in code no. 010201 silk-reeling (1999-2021)

Transition of fatal and non-fatal accidents in workers ages (1999-2021)

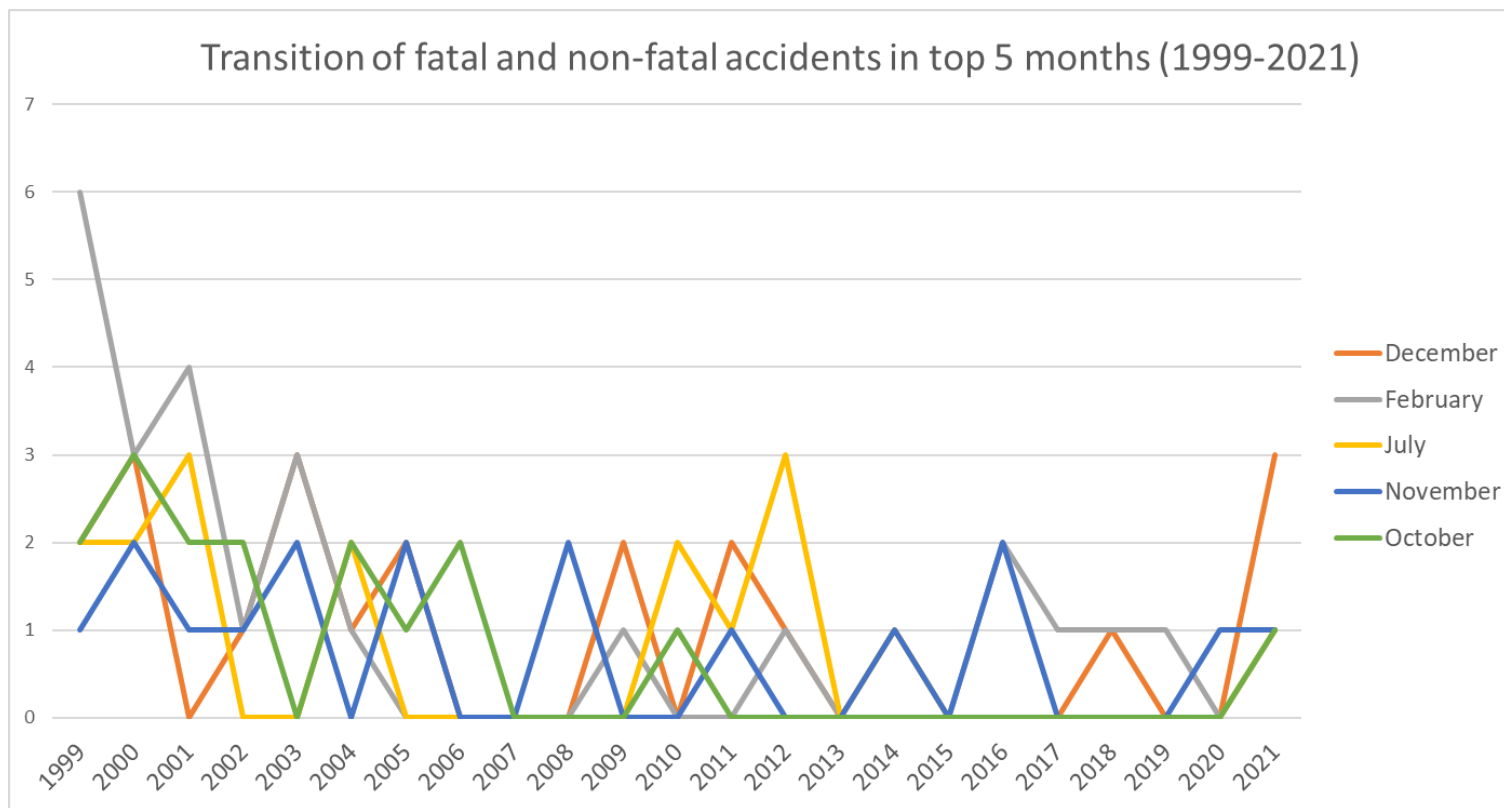


Transition of fatal and non-fatal accidents in workers ages in code no. 010201 silk-reeling (1999-2021)

Transition of fatal and non-fatal accidents in workers scales (1999-2021)

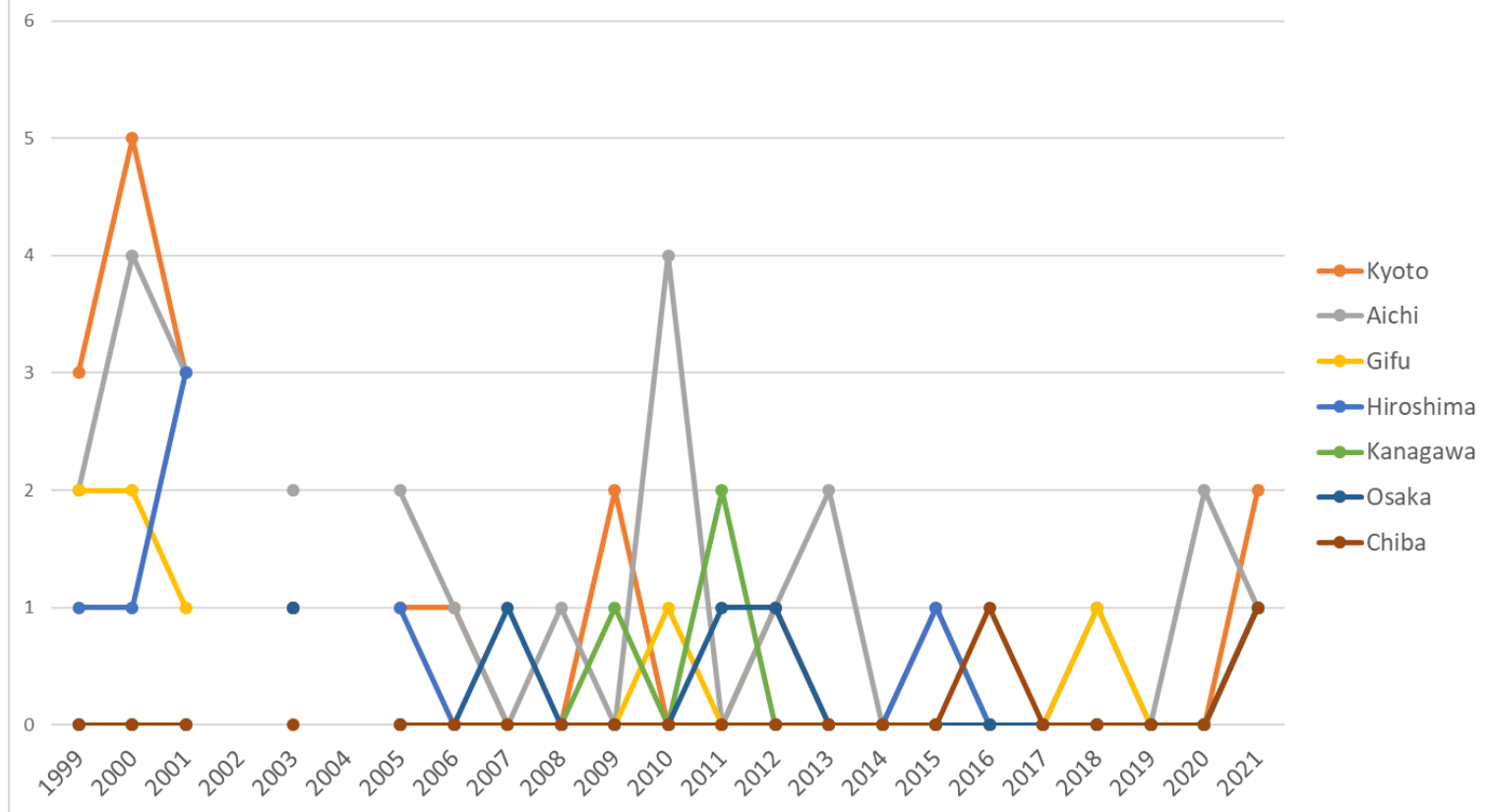


Transition of fatal and non-fatal accidents in workers scales in code no. 010201 silk-reeling (1999-2021)



Transition of fatal and non-fatal accidents in months in code no. 010201 silk-reeling (1999-2021)

Transition of fatal and non-fatal accidents in top 7 prefectures (1999-2021)



Transition of fatal and non-fatal accidents in prefectures in code no. 010201 silk-reeling (1999-2021)

Transition of fatal and non-fatal accidents in large causal agents in code no. 010201 silk-reeling (1999-2021)

code	Causal (L) agents	1999	2000	2001	2002	2003	2004	2005	2006	2007	2008	2009	2010	2011	2012	2013	2014	2015	2016	2017	2018	2019	2020	2021	total	Causal (L) agents
1	machine	11	16	10	3	5	7	1	5		2		2	5	5	1	2	1	2	2	2		2	2	86	machine
3	other equipment	4	4	5	3	1	2	3				2	1		2		1		2		1			2	33	other equipment
5	substance, material	4	1	1		1		2			1		1						1					2	14	substance, material

2	crane, conveying machine	3	4	1	2	2		2									1		2		2			1	20	crane, conveying machine
4	temporary buildings, establishments	7	4	2	5	1	1		1				2		1	1		1	1			1		1	29	temporary buildings, establishments
6	load	1	3		1	1		1	1	1	1									1		1			12	load
7	environment			1																					1	environment
9	others				2			1		1		1	1	1								2	1		10	others
	total	30	32	20	16	11	10	10	7	2	4	3	7	6	8	2	4	2	8	3	5	4	3	8	205	total

Transition of fatal and non-fatal accidents in middle causal agents in code no. 010201 silk-reeling (1999-2021)

code	Causal (M) agents	1999	2000	2001	2002	2003	2004	2005	2006	2007	2008	2009	2010	2011	2012	2013	2014	2015	2016	2017	2018	2019	2020	2021	total	Causal (M) agents
16	general machine	9	16	9	3	5	6	1	5		2		1	5	4	1	2	1	1	2	2		2	2	79	general machine
37	tools	3	1	2	2			2				1			2		1		1		1			2	18	tools
41	temporary buildings, establishments	7	4	2	5	1	1		1				2		1	1		1	1			1		1	29	temporary buildings, establishments
22	conveying machine	2	2	1		2		2									1		1					1	12	conveying machine
52	materials	3	1			1		2			1													1	9	materials
51	hazards, harmful	1		1									1						1					1	5	hazards, harmful

	substances																								substances
61	load	1	3		1	1		1	1	1	1								1		1			12	load
36	human power machine, tools	1	2	1				1				1	1											7	human power machine, tools
92	no causal agent				2			1		1			1								1	1		7	no causal agent
12	power transmission mechanism	1		1			1						1		1									5	power transmission mechanism
39	other equipments, facilities		1	1		1	1											1						5	other equipments, facilities
21	crane	1	1		1													1						4	crane
23	vehicle		1		1															2				4	vehicle
91	other causal agent											1		1							1			3	other causal agent
31	pressure vessel			1	1																			2	pressure vessel
13	woodworking machine																	1						1	woodworking machine
15	metal manufacturing machine	1																						1	metal manufacturing machine
34	kiln, caldron						1																	1	kiln, caldron
71	natural environment			1																				1	natural environment

[illegible]

[illegible]

	substance																									substance
612	machine/equipment as load																									machine/equipment as load
711	natural ground, rock																									natural ground, rock
712	standing tree																									standing tree
713	water																									water
714	abnormal environment																									abnormal environment
719	other environments																									other environments
999	unclassifiable																									unclassifiable
	total			20		11		10	7	2	4	3	7	6	8	2	4	2	8	3	5	4	3	8	117	total

Transition of fatal and non-fatal accidents in type of accidents in code no. 010201 silk-reeling (1999-2021)

code	Type of accidents	1999	2000	2001	2002	2003	2004	2005	2006	2007	2008	2009	2010	2011	2012	2013	2014	2015	2016	2017	2018	2019	2020	2021	total	Type of accidents
07	caught in/between	8	16	8	4	6	3	2	6		2		3	6	5	1	2	1	1	3	1	1	2	2	83	caught in/between
01	fall from height	8		1	2	1	1	2				1												2	18	fall from height
08	cut	1	4	3				1				1			1		1		2					1	15	cut
19	reaction to motion/improper motion	1	2	1	1		1			2			1									1	1	1	12	reaction to motion/improper motion
06	crashed by	2		1			1											1						1	6	crashed by
12	contact to harmful	1		1																				1	3	contact to harmful

	substance																									substance
02	falling to same level	6	6	3	7	3	3	2	1				2		2	1		1	1		1	1			40	falling to same level
03	crash	3	3			1		2			1					1		1							12	crash
11	contact to high/low-temperature		1	1	1			1					1					2			1				8	contact to high/low-temperature
17	traffic accident (public road)				1															2					3	traffic accident (public road)
04	struck by flying or falling object			1							1														2	struck by flying or falling object
05	collapse						1																		1	collapse
13	electric shock																			1					1	electric shock
90	others											1													1	others
09	injury to the sole of the foot																									injury to the sole of the foot
10	drown																									drown
14	explosion																									explosion
15	burst																									burst
16	fire																									fire
18	traffic accident (others)																									traffic accident (others)
99	unclassifiable																									unclassifiable
	total	30	32	20	16	11	10	10	7	2	4	3	7	6	8	2	4	2	8	3	5	4	3	8	205	total

code	Age	1999	2000	2001	2002	2003	2004	2005	2006	2007	2008	2009	2010	2011	2012	2013	2014	2015	2016	2017	2018	2019	2020	2021	total	Age
5	50-59	15	11	5	5	4	5	5	3	1	2		2	3	3	1			2	1	2	1		3	74	50-59
4	40-49	4	8	3	5		2		2		1			1		1			1			1	1	2	32	40-49
3	30-39	5	1	5	1	6	1	1				1		1	1		1	2	2		1			2	31	30-39
6	60 years old or more	2	9	2	4	1	2	2		1	1	2	1		2		1			1	1	1	1	1	35	60 years old or more
2	20-29	4	3	4				2	2				4		2		2		1	1		1	1		27	20-29
1	19 years old or less			1	1									1					2		1				6	19 years old or less
	total	30	32	20	16	11	10	10	7	2	4	3	7	6	8	2	4	2	8	3	5	4	3	8	205	total

code	Workers scale	1999	2000	2001	2002	2003	2004	2005	2006	2007	2008	2009	2010	2011	2012	2013	2014	2015	2016	2017	2018	2019	2020	2021	total	Workers scale
2	10-29	7	13	6	1	6	1	7		1	1		3	4	5	1	1		1		2	1	2	4	67	10-29
1	9 workers or less	9	6	3	6	2	4		2	1	3	2	1		1			2		2	1	1		3	49	9 workers or less
6	300 workers or more	2	1									1									1			1	6	300 workers or more
4	50-99	5	6	4	5	2	4	2	2				2			1							1		34	50-99
5	100-299	5	1	4	2	1	1	1					1	1	2		1		6		1	2			29	100-299
3	30-49	2	5	3	2				3					1			2		1	1					20	30-49
	total	30	32	20	16	11	10	10	7	2	4	3	7	6	8	2	4	2	8	3	5	4	3	8	205	total

[illegible]

code	Month	1999	2000	2001	2002	2003	2004	2005	2006	2007	2008	2009	2010	2011	2012	2013	2014	2015	2016	2017	2018	2019	2020	2021	total	Month
12	December	2	3		1	3	1	2				2		2	1						1			3	21	December
2	February	6	3	4	1	3	1					1			1				2	1	1	1		1	26	February
7	July	2	2	3			2						2	1	3		1							1	17	July
11	November	1	2	1	1	2		2			2			1			1		2				1	1	17	November
10	October	2	3	2	2		2	1	2				1											1	16	October
8	August	1	1	4	1			1	1		1					1				1				1	13	August
1	January	5	2	2	1	1	1	3	1				2		1		1			1			1		22	January
9	September	3	3	1	2			1			1			1				1	3		1	1			18	September
4	April	2	7		1	1	1		1	1						1						2			17	April
6	June	5	2	1	3				2	1				1	1		1								17	June
5	May	1	1		3	1	2						2								1				11	May
3	March		3	2											1			1	1		1		1		10	March
	total	30	32	20	16	11	10	10	7	2	4	3	7	6	8	2	4	2	8	3	5	4	3	8	205	total

Transition of fatal and non-fatal accidents in prefectures in code no. 010201 silk-reeling (1999-2021)

code	Prefecture	1999	2000	2001	2002	2003	2004	2005	2006	2007	2008	2009	2010	2011	2012	2013	2014	2015	2016	2017	2018	2019	2020	2021	total	Prefecture
26	Kyoto	3	5	3		1		1	1			2			1									2	19	Kyoto
23	Aichi	2	4	3		2		2	1		1		4		1	2		1			1		2	1	27	Aichi
21	Gifu	2	2	1		1							1								1			1	9	Gifu
34	Hiroshima	1	1	3		1		1										1						1	9	Hiroshima
14	Kanagawa					1						1		2										1	5	Kanagawa
27	Osaka					1				1				1	1									1	5	Osaka
12	Chiba																		1					1	2	Chiba

[illegible]

46	Kagoshima												1												1	Kagoshima
1	Hokkaido																									Hokkaido
2	Aomori																									Aomori
3	Iwate																									Iwate
5	Akita																									Akita
9	Tochigi																									Tochigi
19	Yamanashi																									Yamanashi
30	Wakayama																									Wakayama
31	Tottori																									Tottori
32	Shimane																									Shimane
36	Tokushima																									Tokushima
37	Kagawa																									Kagawa
38	Ehime																									Ehime
41	Saga																									Saga
43	Kumamoto																									Kumamoto
44	Oita																									Oita
47	Okinawa																									Okinawa
	total	30	32	20		11		10	7	2	4	3	7	6	8	2	4	2	8	3	5	4	3	8	179	total

Data source : <https://anzeninfo.mhlw.go.jp/user/anzen/tok/anst00.htm>

Return to https://www.jisha.or.jp/english/statistics/202211_23.html