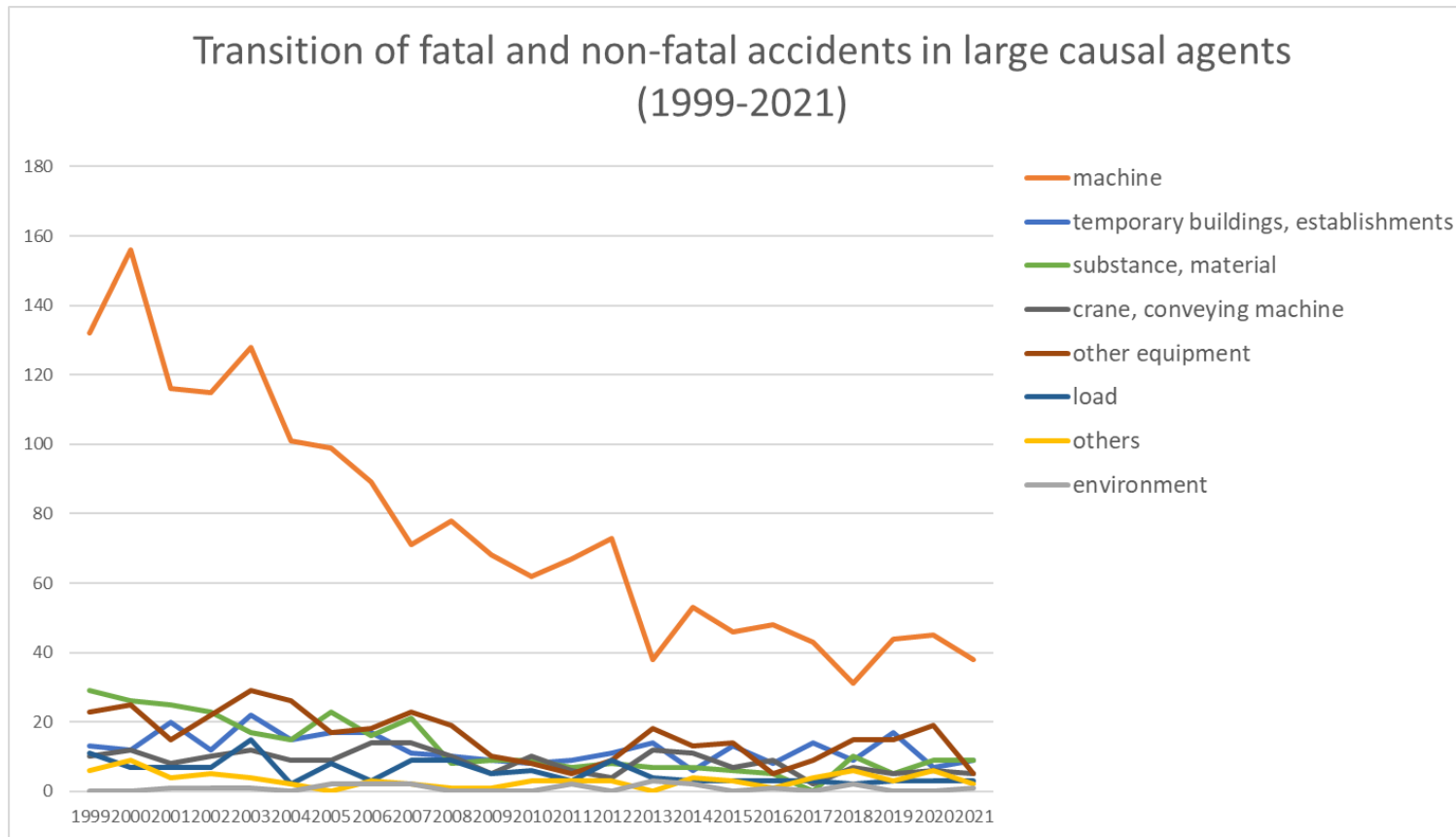
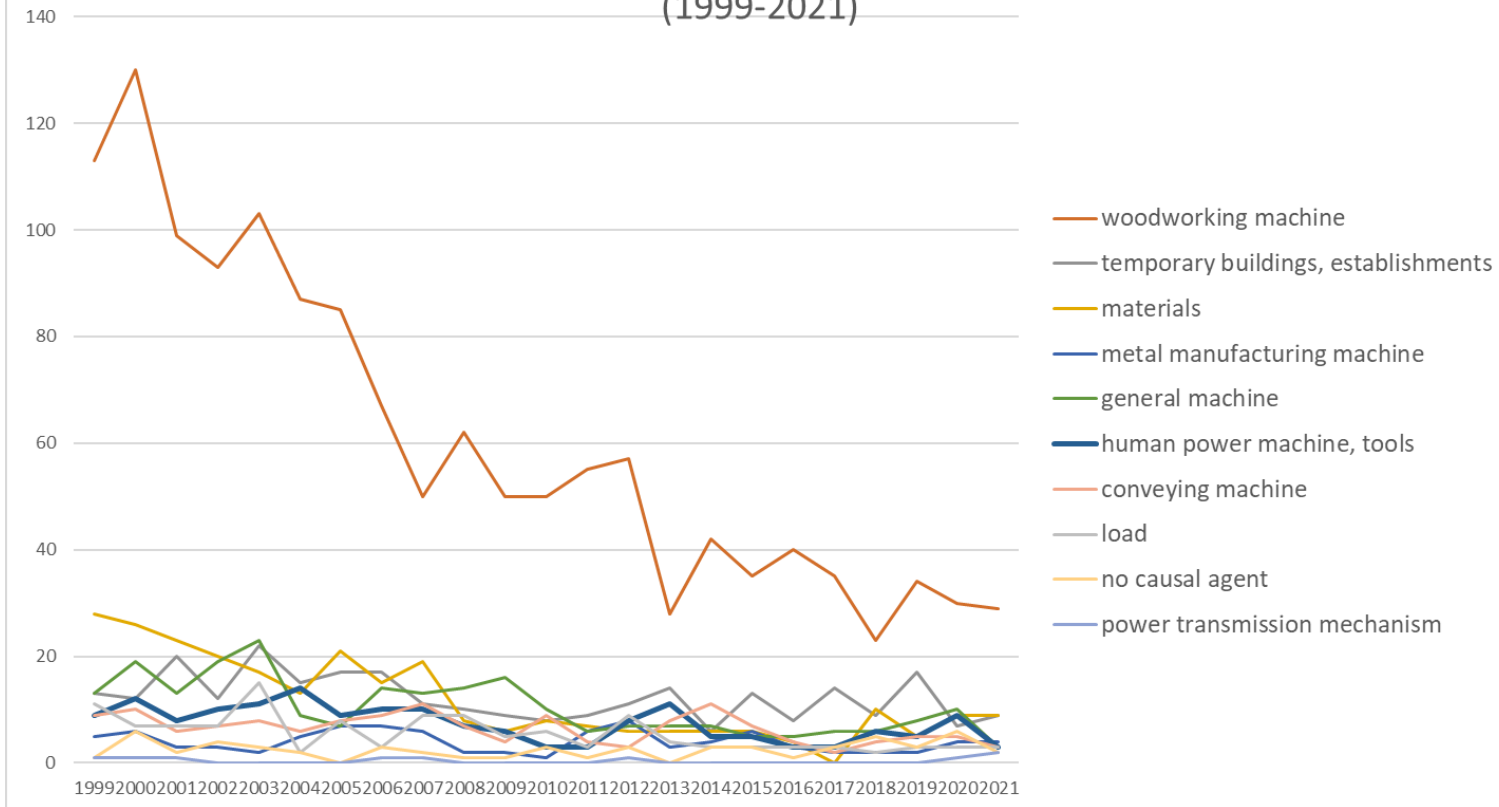


Transition of fatal and non-fatal accidents in each element like as causal agents, type of accidents, etc. in code no. 010509 other furniture (1999-2021)



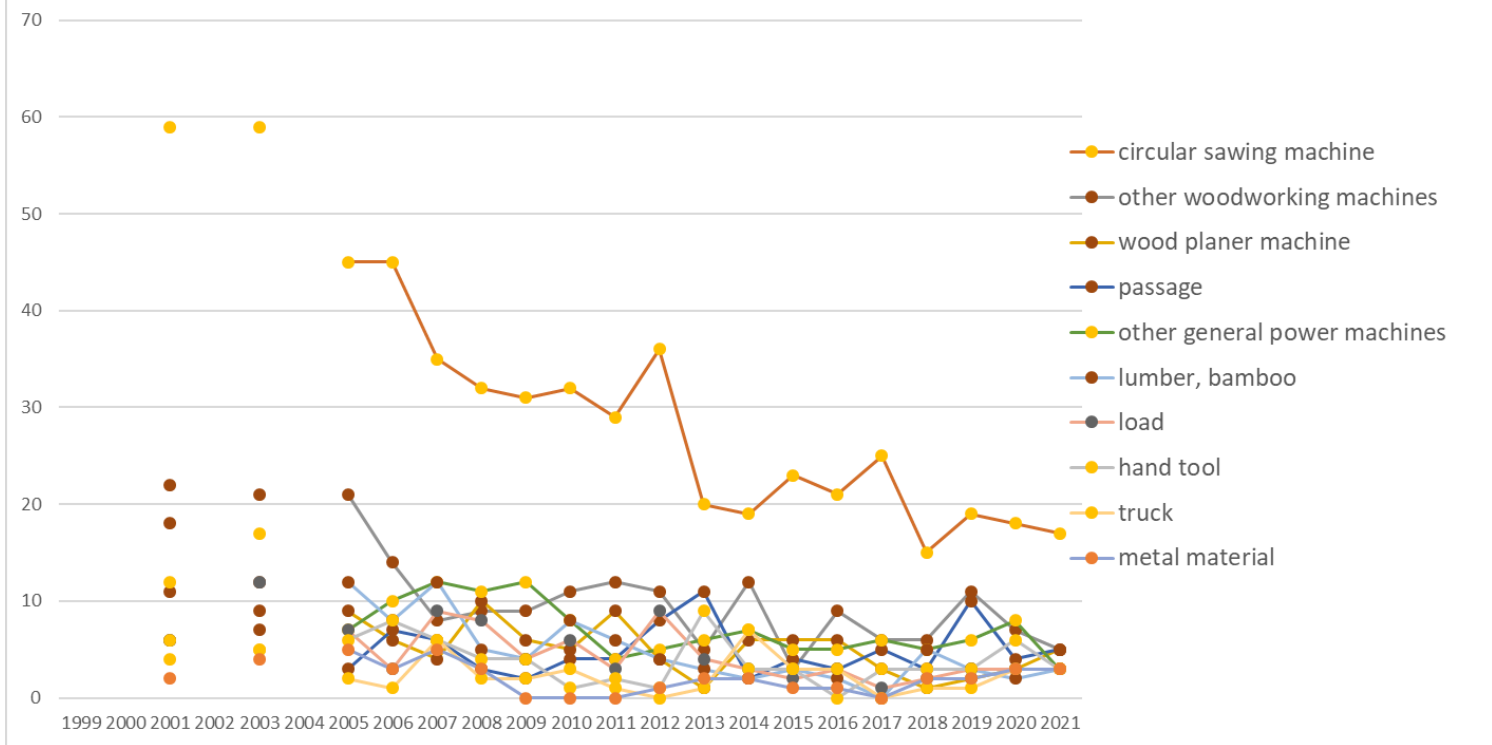
Transition of fatal and non-fatal accidents in large causal agents in code no. 010509 other furniture (1999-2021)

Transition of fatal and non-fatal accidents in top 10 middle causal agents  
(1999-2021)



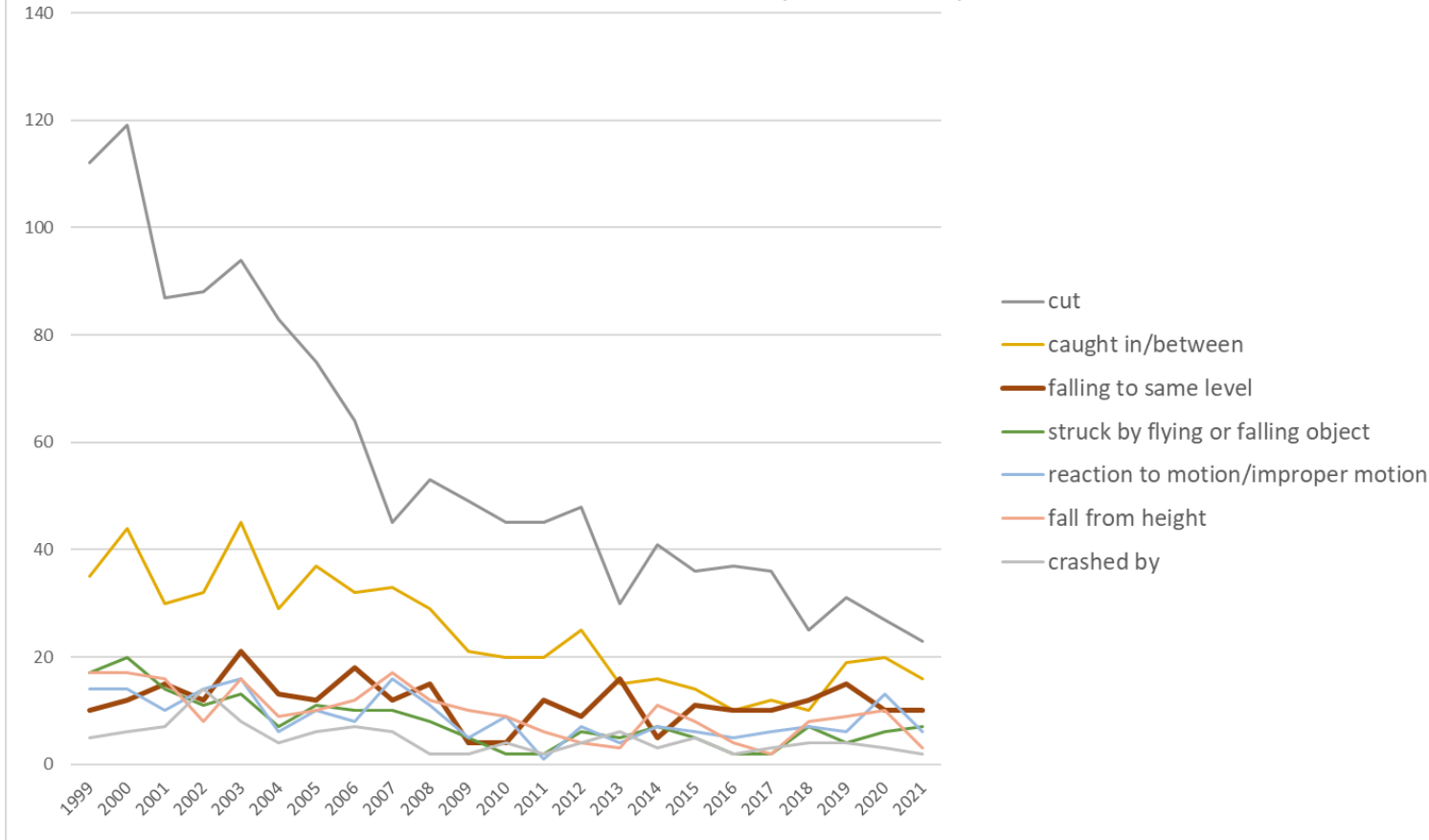
Transition of fatal and non-fatal accidents in middle causal agents in code no. 010509 other furniture (1999-2021)

### Transition of fatal and non-fatal accidents in top 10 small causal agents (1999-2021)



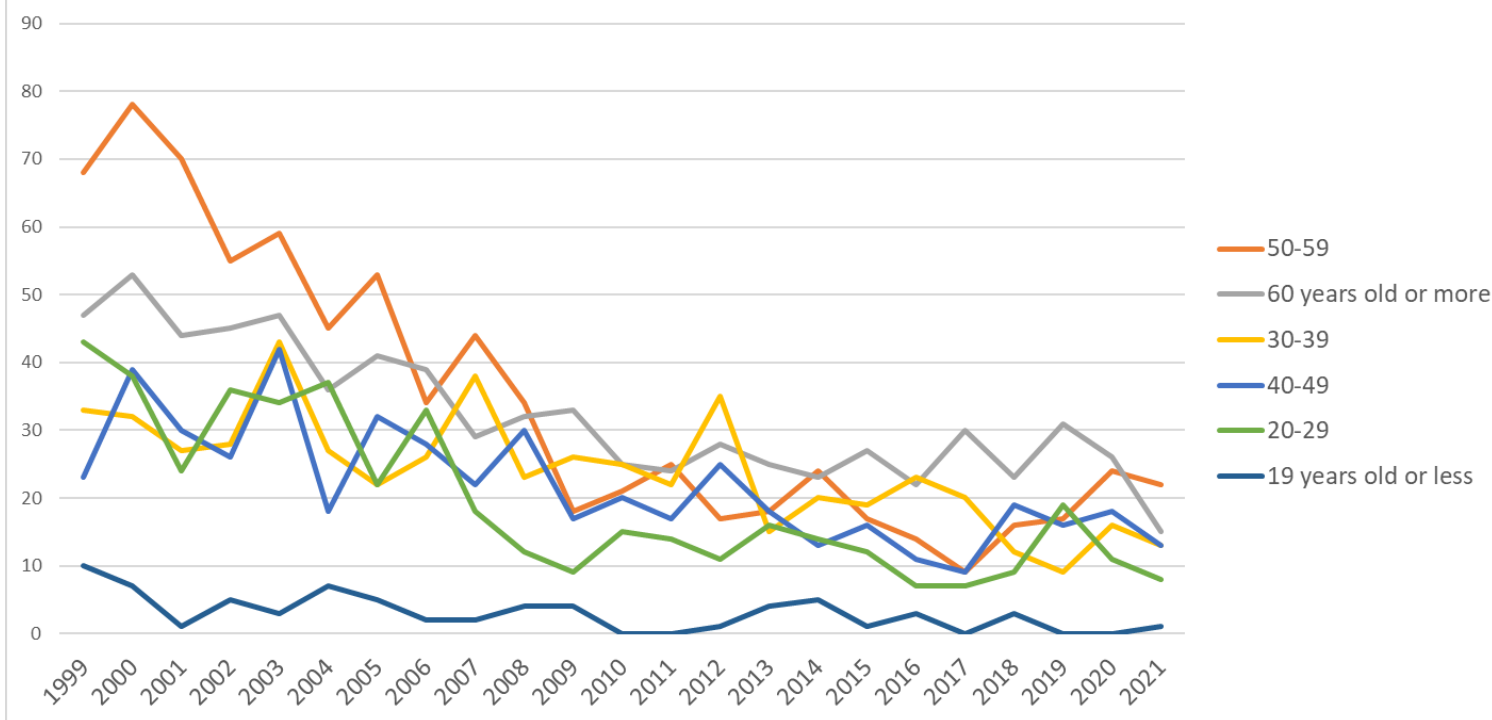
Transition of fatal and non-fatal accidents in small causal agents in code no. 010509 other furniture (1999-2021)

Transition of fatal and non-fatal accidents in top 7 type of accidents  
(1999-2021)



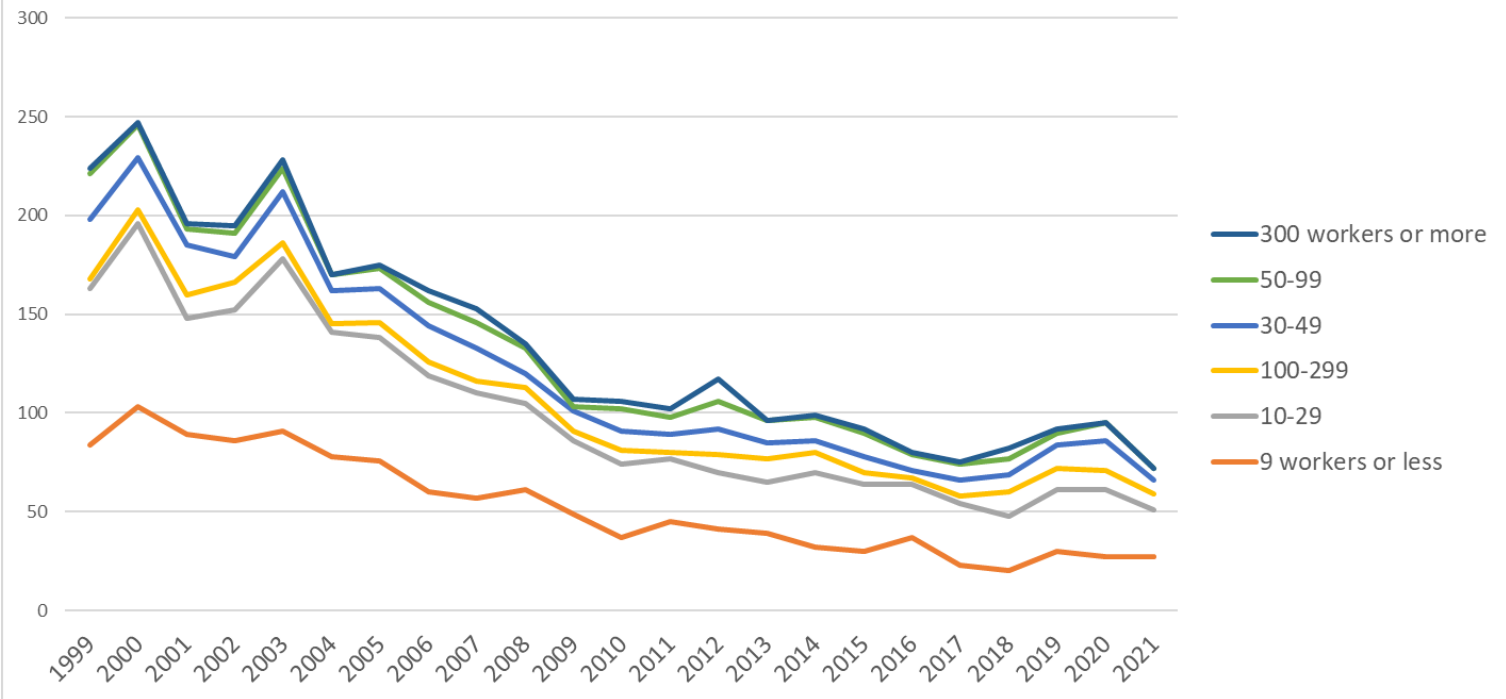
Transition of fatal and non-fatal accidents in type of accidents in code no. 010509 other furniture (1999-2021)

Transition of fatal and non-fatal accidents in workers ages (1999-2021)



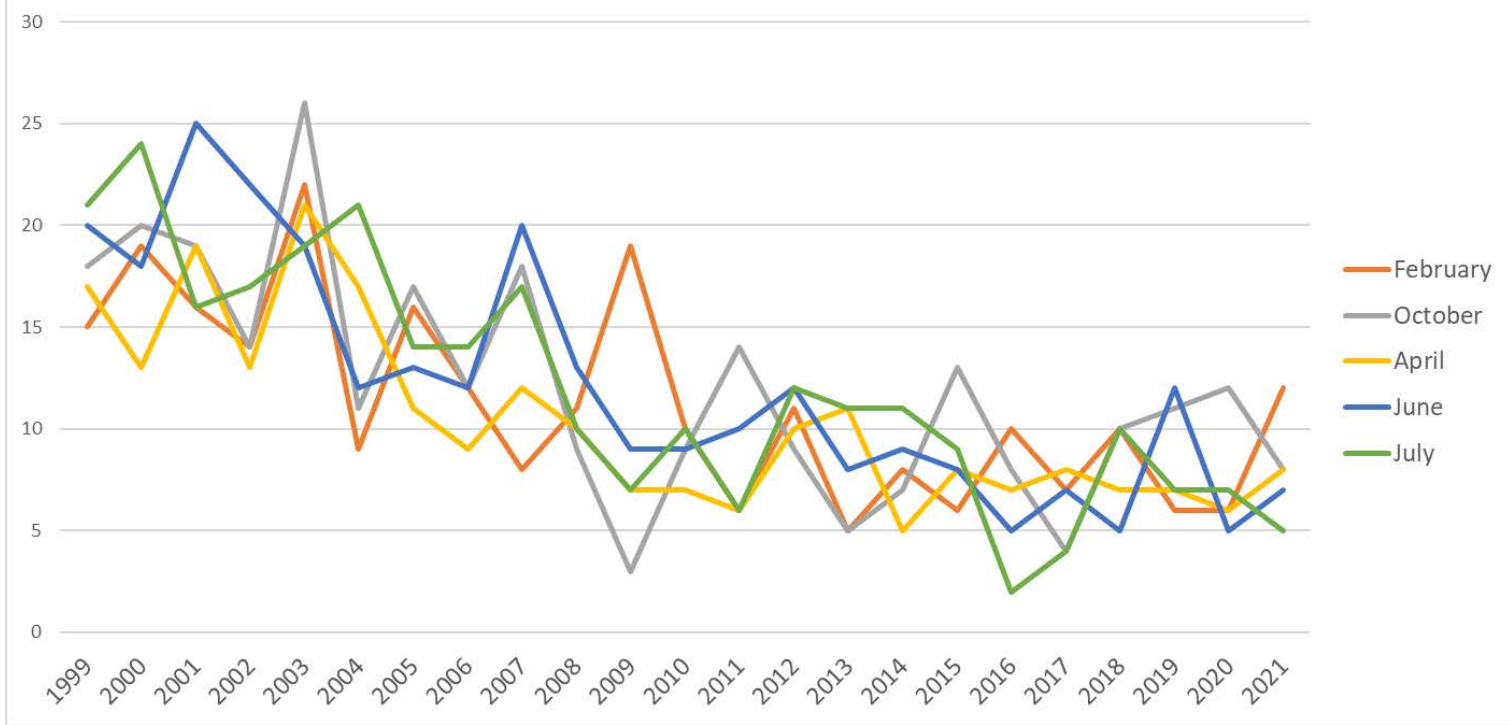
Transition of fatal and non-fatal accidents in workers ages in code no. 010509 other furniture (1999-2021)

Transition of fatal and non-fatal accidents in workers scales (1999-2021)



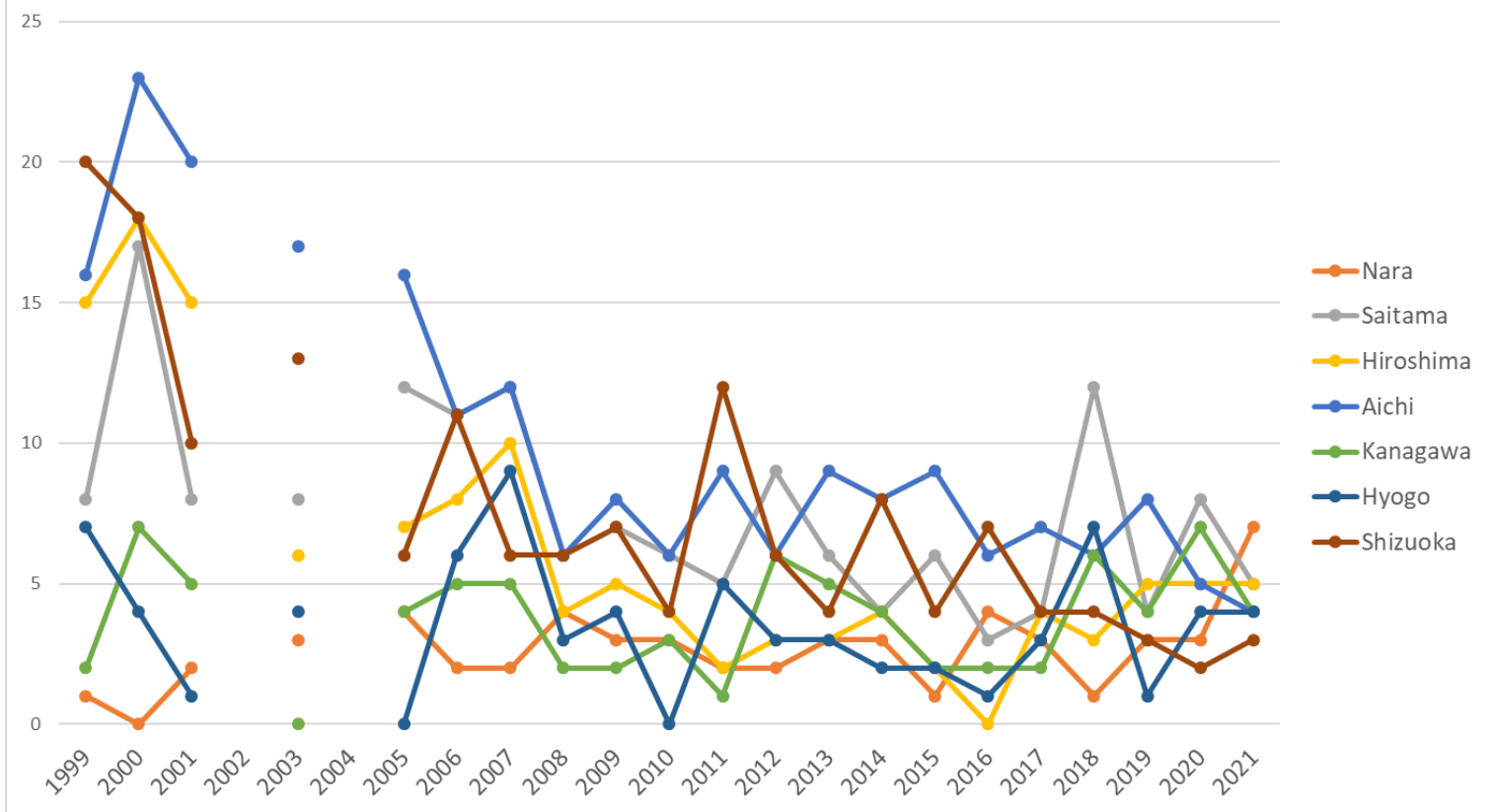
Transition of fatal and non-fatal accidents in workers scales in code no. 010509 other furniture (1999-2021)

Transition of fatal and non-fatal accidents in top 5 months (1999-2021)



Transition of fatal and non-fatal accidents in months in code no. 010509 other furniture (1999-2021)

Transition of fatal and non-fatal accidents in top 7 prefectures (1999-2021)



Transition of fatal and non-fatal accidents in prefectures in code no. 010509 other furniture (1999-2021)

Transition of fatal and non-fatal accidents in large causal agents in code no. 010509 other furniture (1999-2021)

code	Causal (L) agents	1999	2000	2001	2002	2003	2004	2005	2006	2007	2008	2009	2010	2011	2012	2013	2014	2015	2016	2017	2018	2019	2020	2021	total	Causal (L) agents
1	machine	132	156	116	115	128	101	99	89	71	78	68	62	67	73	38	53	46	48	43	31	44	45	38	1,741	machine
4	temporary buildings, establishments	13	12	20	12	22	15	17	17	11	10	9	8	9	11	14	6	13	8	14	9	17	7	9	283	temporary buildings, establishments
5	substance, material	29	26	25	23	17	15	23	16	21	8	9	9	7	8	7	7	6	5		10	5	9	9	294	substance,





36	human power machine, tools	9	12	8	10	11	14	9	10	10	7	6	3	3	8	11	5	5	3	3	6	5	9	3	170	human power machine, tools
22	conveying machine	9	10	6	7	8	6	8	9	11	7	4	9	4	3	8	11	7	4	2	4	5	5	3	150	conveying machine
61	load	11	7	7	7	15	2	8	3	9	9	5	6	3	9	4	3	3	3	3	2	3	3	3	128	load
92	no causal agent	1	6	2	4	3	2		3	2	1	1	3	1	3		3	3	1	3	5	3	6	2	58	no causal agent
12	power transmission mechanism	1	1	1					1	1					1								1	2	9	power transmission mechanism
37	tools	11	12	5	10	14	7	6	5	10	10	4	3	1	1	3	7	4	2	1	7	9	7	1	140	tools
39	other equipments, facilities	3		2	2	4	4	2		3	2		1	1		3	1	4		2	1	1	3	1	40	other equipments, facilities
23	vehicle	1	2	1	3	2	1	1	3	3	2	1		1	1	2			4		1			1	30	vehicle
71	natural environment			1	1	1		2	2	2				2		3	2		1		2			1	20	natural environment
21	crane			1		2	2		2		1		1	1		2			1		2		1	1	17	crane
51	hazards, harmful substances	1		2	3		2	2	1	2		3	1		2	1	1		1						22	hazards, harmful substances
91	other causal agent	5	3	1	1	1								2			1			1	1				16	other causal agent
34	kiln, caldron		1										1							2	1				5	kiln, caldron
31	pressure vessel								2							1									3	pressure vessel

33	welding equipment							1										1							2	welding equipment
35	electric equipment						1											1							2	electric equipment
11	engine								1																1	engine
14	construction machine											1													1	construction machine
99	unclassifiable			1																					1	unclassifiable
17	mobile silviculture machine																									mobile silviculture machine
32	chemical facilities																									chemical facilities
	total	224	247	196	195	228	170	175	162	153	135	107	106	102	117	96	99	92	80	75	82	92	95	72	3,100	total

Transition of fatal and non-fatal accidents in small causal agents in code no. 010509 other furniture (1999-2021)

code	Causal (S) agents	1999	2000	2001	2002	2003	2004	2005	2006	2007	2008	2009	2010	2011	2012	2013	2014	2015	2016	2017	2018	2019	2020	2021	total	Causal (S) agents
131	circular sawing machine			59		59		45	45	35	32	31	32	29	36	20	19	23	21	25	15	19	18	17	580	circular sawing machine
139	other woodworking machines			22		21		21	14	8	9	9	11	12	11	5	12	3	9	6	6	11	7	5	202	other woodworking machines
133	wood planer machine			11		12		9	6	4	10	6	5	9	4	1	6	6	6	3	1	2	3	5	109	wood planer machine
417	passage			6		7		3	7	6	3	2	4	4	8	11	2	4	3	5	3	10	4	5	97	passage
169	other general			12		17		7	10	12	11	12	8	4	5	6	7	5	5	6	5	6	8	3	149	other general





132	band sawing machine					1		2	1		1		1		2		2	1	1	1					13	band sawing machine
612	machine/equipment as load			1		3		1			1	1						1		2					10	machine/equipment as load
415	roof, beam, haze, crossbeam, principal rafter			3				1						1				2			1		1		9	roof, beam, haze, crossbeam, principal rafter
411	scaffolding							2				2						1				2			7	scaffolding
512	inflammable substance			1				1		1		1			2	1									7	inflammable substance
519	other hazards, harmful substances			1				1		1		1	1				1		1						7	other hazards, harmful substances
715	high/cold temperature environment							1						1		2	1					2			7	high/cold temperature environment
911	other causal agent			1		1							2			1				1	1				7	other causal agent
414	opening					1		1			1	1	1							1					6	opening
211	crane								2				1			2									5	crane
229	other powered conveying machines					1					1		1				1								4	other powered conveying machines
363	human power machine					1									2	1									4	human power machine
156	shearing machine								1	1		1													3	shearing machine
341	kiln, caldron											1								2					3	kiln, caldron
372	slinging tool					1										1	1								3	slinging tool











06	crashed by	5	6	7	14	8	4	6	7	6	2	2	4	2	4	6	3	5	2	3	4	4	3	2	109	crashed by	
05	collapse	6	8	6	3	5	8	1	2	6	2	5	4	2	7	4	1	3			2		2	2	79	collapse	
03	crash	3	3	3	5	6	5	6	2	1	1	2	3	8	5	6	5	1	2		1	3	2	1	74	crash	
11	contact to high/low-temperature	1	2	2	1	2	1	3	2			2	3	1	1	4	1			3	4		1	1	35	contact to high/low-temperature	
17	traffic accident (public road)	1	2	2	3	2	1	1	1	3	2	1	2	1		3	1	1	6		1			1	35	traffic accident (public road)	
09	injury to the sole of the foot	2		1	1			2	3	1											1				11	injury to the sole of the foot	
12	contact to harmful substance				3		1	1	1	1		1				1		2							11	contact to harmful substance	
90	others	1		1						2							2		1		1	1			9	others	
16	fire			1			1								1										3	fire	
14	explosion						2																		2	explosion	
10	drown													1											1	drown	
13	electric shock												1												1	electric shock	
15	burst													1											1	burst	
99	unclassifiable			1																					1	unclassifiable	
18	traffic accident (others)																										traffic accident (others)
	total	224	247	196	195	228	170	175	162	153	135	107	106	102	117	96	99	92	80	75	82	92	95	72	3,100	total	

Transition of fatal and non-fatal accidents in workers ages in code no. 010509 other furniture (1999-2021)

code	Age	1999	2000	2001	2002	2003	2004	2005	2006	2007	2008	2009	2010	2011	2012	2013	2014	2015	2016	2017	2018	2019	2020	2021	total	Age
5	50-59	68	78	70	55	59	45	53	34	44	34	18	21	25	17	18	24	17	14	9	16	17	24	22	782	50-59
6	60 years old or more	47	53	44	45	47	36	41	39	29	32	33	25	24	28	25	23	27	22	30	23	31	26	15	745	60 years old or more
3	30-39	33	32	27	28	43	27	22	26	38	23	26	25	22	35	15	20	19	23	20	12	9	16	13	554	30-39
4	40-49	23	39	30	26	42	18	32	28	22	30	17	20	17	25	18	13	16	11	9	19	16	18	13	502	40-49
2	20-29	43	38	24	36	34	37	22	33	18	12	9	15	14	11	16	14	12	7	7	9	19	11	8	449	20-29
1	19 years old or less	10	7	1	5	3	7	5	2	2	4	4			1	4	5	1	3		3			1	68	19 years old or less
	total	224	247	196	195	228	170	175	162	153	135	107	106	102	117	96	99	92	80	75	82	92	95	72	3,100	total

Transition of fatal and non-fatal accidents in workers scales in code no. 010509 other furniture (1999-2021)

code	Workers scale	1999	2000	2001	2002	2003	2004	2005	2006	2007	2008	2009	2010	2011	2012	2013	2014	2015	2016	2017	2018	2019	2020	2021	total	Workers scale
1	9 workers or less	84	103	89	86	91	78	76	60	57	61	49	37	45	41	39	32	30	37	23	20	30	27	27	1,222	9 workers or less
2	10-29	79	93	59	66	87	63	62	59	53	44	37	37	32	29	26	38	34	27	31	28	31	34	24	1,073	10-29
5	100-299	5	7	12	14	8	4	8	7	6	8	5	7	3	9	12	10	6	3	4	12	11	10	8	179	100-299
3	30-49	30	26	25	13	26	17	17	18	17	7	10	10	9	13	8	6	8	4	8	9	12	15	7	315	30-49
4	50-99	23	17	8	12	12	8	10	12	13	13	2	11	9	14	11	12	12	8	8	8	6	9	6	244	50-99
6	300 workers or more	3	1	3	4	4		2	6	7	2	4	4	4	11		1	2	1	1	5	2			67	300 workers or more
	total	224	247	196	195	228	170	175	162	153	135	107	106	102	117	96	99	92	80	75	82	92	95	72	3,100	total

Transition of fatal and non-fatal accidents in months in code no. 010509 other furniture (1999-2021)

code	Month	1999	2000	2001	2002	2003	2004	2005	2006	2007	2008	2009	2010	2011	2012	2013	2014	2015	2016	2017	2018	2019	2020	2021	total	Month
2	February	15	19	16	14	22	9	16	12	8	11	19	10	6	11	5	8	6	10	7	10	6	6	12	258	February

10	October	18	20	19	14	26	11	17	12	18	9	3	9	14	9	5	7	13	8	4	10	11	12	8	277	October
4	April	17	13	19	13	21	17	11	9	12	10	7	7	6	10	11	5	8	7	8	7	7	6	8	239	April
6	June	20	18	25	22	19	12	13	12	20	13	9	9	10	12	8	9	8	5	7	5	12	5	7	280	June
7	July	21	24	16	17	19	21	14	14	17	10	7	10	6	12	11	11	9	2	4	10	7	7	5	274	July
9	September	23	23	12	19	20	14	17	14	11	13	14	7	5	12	9	7	7	8	4	6	8	9	5	267	September
1	January	18	21	10	14	16	10	11	13	17	9	8	7	7	8	8	10	7	9	3	7	11	9	5	238	January
5	May	17	19	15	13	16	20	22	16	7	8	4	7	12	8	7	10	3	6	5	4	7	4	5	235	May
11	November	18	17	11	16	13	16	13	15	12	15	6	7	6	7	5	6	8	10	6	5	7	5	5	229	November
12	December	18	20	14	15	15	12	13	15	11	9	4	7	9	11	8	2	6	3	9	6	7	5	5	224	December
3	March	17	25	20	22	21	18	16	13	12	18	17	11	14	7	7	11	8	9	12	1	8	9	4	300	March
8	August	22	28	19	16	20	10	12	17	8	10	9	15	7	10	12	13	9	3	6	11	1	18	3	279	August
	total	224	247	196	195	228	170	175	162	153	135	107	106	102	117	96	99	92	80	75	82	92	95	72	3,100	total

Transition of fatal and non-fatal accidents in prefectures in code no. 010509 other furniture (1999-2021)

code	Prefecture	1999	2000	2001	2002	2003	2004	2005	2006	2007	2008	2009	2010	2011	2012	2013	2014	2015	2016	2017	2018	2019	2020	2021	total	Prefecture
29	Nara	1		2		3		4	2	2	4	3	3	2	2	3	3	1	4	3	1	3	3	7	56	Nara
11	Saitama	8	17	8		8		12	11	12	6	7	6	5	9	6	4	6	3	4	12	4	8	5	161	Saitama
34	Hiroshima	15	18	15		6		7	8	10	4	5	4	2	3	3	4	2		4	3	5	5	5	128	Hiroshima
23	Aichi	16	23	20		17		16	11	12	6	8	6	9	6	9	8	9	6	7	6	8	5	4	212	Aichi
14	Kanagawa	2	7	5				4	5	5	2	2	3	1	6	5	4	2	2	2	6	4	7	4	78	Kanagawa
28	Hyogo	7	4	1		4			6	9	3	4		5	3	3	2	2	1	3	7	1	4	4	73	Hyogo
22	Shizuoka	20	18	10		13		6	11	6	6	7	4	12	6	4	8	4	7	4	4	3	2	3	158	Shizuoka
13	Tokyo	8	9	7		15		10	11	2	9	12	5	5	4	5	4	2	3	1		6	3	3	124	Tokyo
1	Hokkaido	1	12	6		5		5	6	7	8	1	5	3	2	2	4	1	1		1	2	1	3	76	Hokkaido

16	Toyama	5	5	4		5		6	1	4		1	1	1	1	1	1	4	3		1	3	2	3	52	Toyama
20	Nagano		3	5		4		5	2	2	3	4	1	3		2	1	3	1	2		3	4	3	51	Nagano
36	Tokushima	19	14	11		9		6	7		7	6	3	2	9	4	6	6	3	4	6	1	3	2	128	Tokushima
9	Tochigi	7	6	5		6		5	1	3	2	2	2	1	4	2	3	1		1	3	4	1	2	61	Tochigi
33	Okayama	2	4	4		3		4	2	4	5	1	5	3	4	2	3			2	1	4		2	55	Okayama
7	Fukushima	1	6	5		7		2	4	5			2	2	2		1	4	2	2	1	1	1	2	50	Fukushima
46	Kagoshima	3	5	1		6		2	2	3	1	2			1	3	1	1	2	2	1	1	1	2	40	Kagoshima
43	Kumamoto	4	2	3		7		3	1	1	1	1	1	2		1	1						1	2	31	Kumamoto
4	Miyagi	1	1			2		3			1			2		2	3	3			2	2		2	24	Miyagi
42	Nagasaki	1		1		2		1	1	1	1	1		1		1	1	2			2	1		2	19	Nagasaki
21	Gifu	11	11	16		13		8	15	15	7	8	8	3	10	7	4	7	6	5	3	5	8	1	171	Gifu
27	Osaka	18	17	11		19		13	4	4	7	7	7	3	7	4	2	4	5	1	3	8	11	1	156	Osaka
15	Niigata	13	11	9		17		5	3	4	4	4	6	5	2	8	3	4	6	5	2		5	1	117	Niigata
10	Gunma	6	8	9		8		6	2	3	6	4	2	1	3	2	1	4	2	2	2	1	3	1	76	Gunma
12	Chiba	4	1	1		6		3	4	3	1	3	1	2			2	3	1	3	1	4	2	1	46	Chiba
37	Kagawa	8	4	3		4		2	4	3	3	2	2	1	1	1	1				1			1	41	Kagawa
39	Kochi	1	2	1		4		3	1	4	4			1		3	3	2	3	4	1	2		1	40	Kochi
25	Shiga	1	1	5		2		2	3	1	1		5	1	2	2	1	2	1	2	1	2	1	1	37	Shiga
26	Kyoto	5	2	3		6		2	3	1	1	1	2		1	1			2	4	1			1	36	Kyoto
8	Ibaraki	1	2	2		1		3	3	2	2	2	1	1	2	1	3		2	1	1	1	2	1	34	Ibaraki
30	Wakayama	2	3			1		2	2	1	4	2	2	3			2	1	1	1			2	1	30	Wakayama
44	Oita	1	3	1		1		3		5	3	1	2		2	1	2	1		1		1	1	1	30	Oita
40	Fukuoka	7	6	4		6		2	7	7	8	2	4	4	1	2	3	2	3		3	2			73	Fukuoka

24	Mie	7	3	2		2		3	4	1	4	1	5	1	4	1	3	2	1	1	2		4		51	Mie
17	Ishikawa			2		3		2	3	1	3		2	4	7		2	1	3				1		34	Ishikawa
45	Miyazaki	1	5	1		2		3	4	3	2		1		1	1	2	1	2	1			1		31	Miyazaki
41	Saga	1	4	1		2			3	1			1	4	1	1	1	1	1			1	1		24	Saga
38	Ehime	2		1		4		2	1	1	1	1	1	2	1			1	1			3	1		23	Ehime
32	Shimane			3				2	1	1	1	2		1	3	2	1				3	1	1		22	Shimane
5	Akita		2	2		1		3	1	1				3	1		1	1		1	1				18	Akita
6	Yamagata	7	3	1		1		1			1			1											15	Yamagata
35	Yamaguchi	1		1		2				1				2	2		1	1				1			12	Yamaguchi
3	Iwate	2	2			1		1		2	1								1						10	Iwate
47	Okinawa	2	2	2						1				1					1			1			10	Okinawa
18	Fukui	1							1				2					1		2		2			9	Fukui
19	Yamanashi	1		2				1					1		1										6	Yamanashi
2	Aomori		1					1							1										3	Aomori
31	Tottori							1	1		1														3	Tottori
	total	224	247	196		228		175	162	153	135	107	106	102	117	96	99	92	80	75	82	92	95	72	2,735	total

Data source : <https://anzeninfo.mhlw.go.jp/user/anzen/tok/anst00.htm>

Return to [https://www.jisha.or.jp/english/statistics/202211\\_23.html](https://www.jisha.or.jp/english/statistics/202211_23.html)