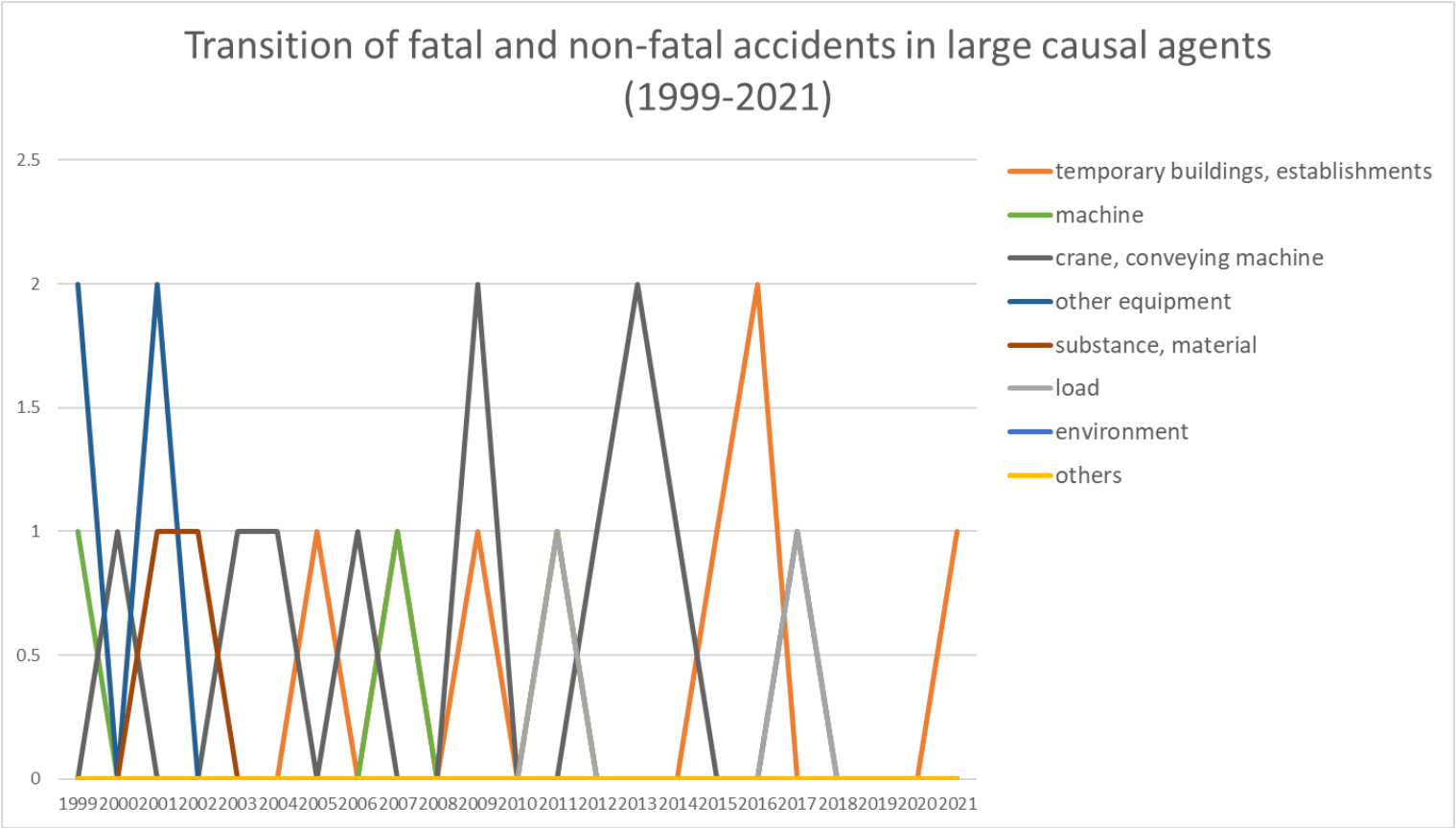
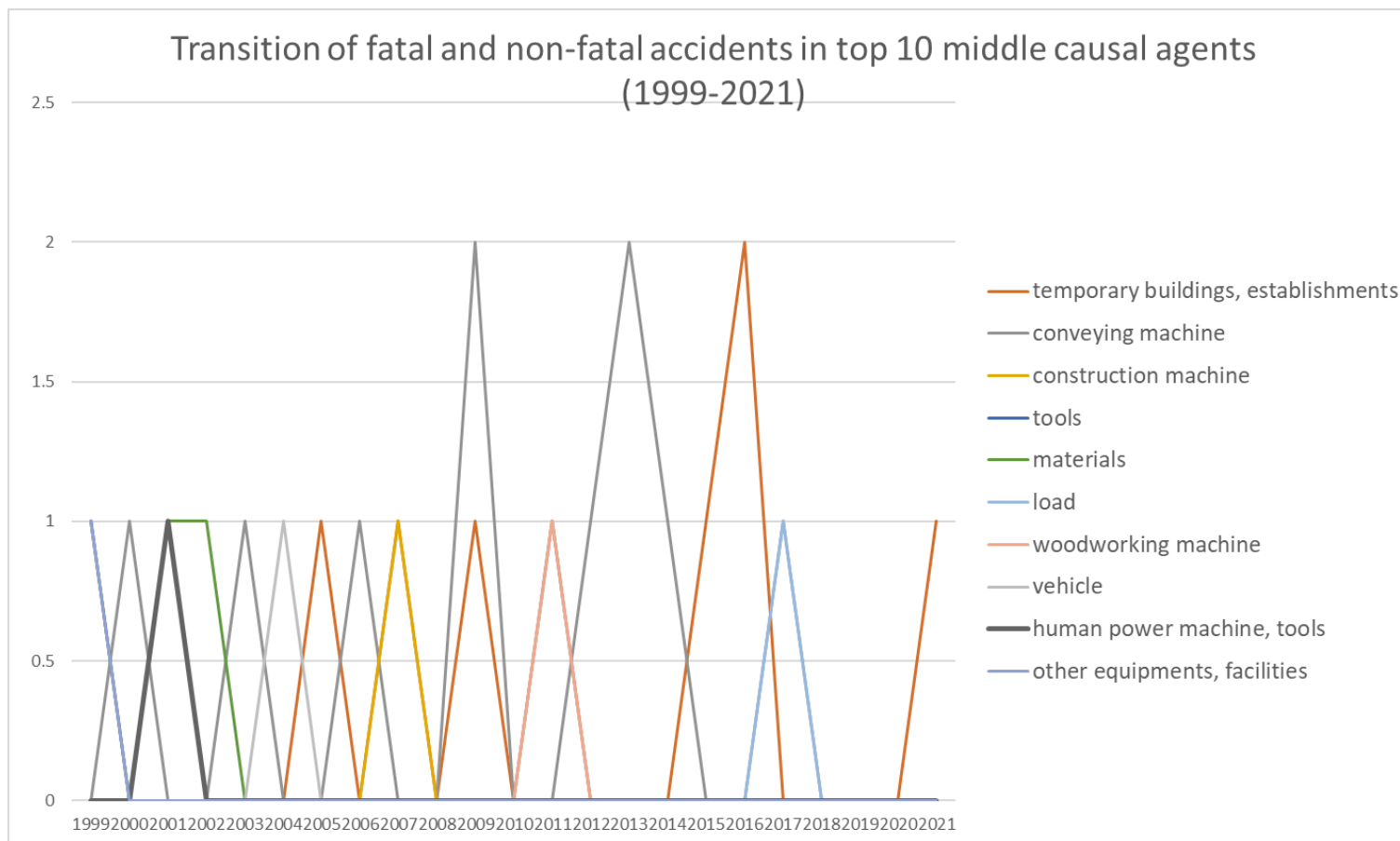


Transition of fatal and non-fatal accidents in each element like as causal agents, type of accidents, etc. in code no. 020109 other coal mining (1999-2021)

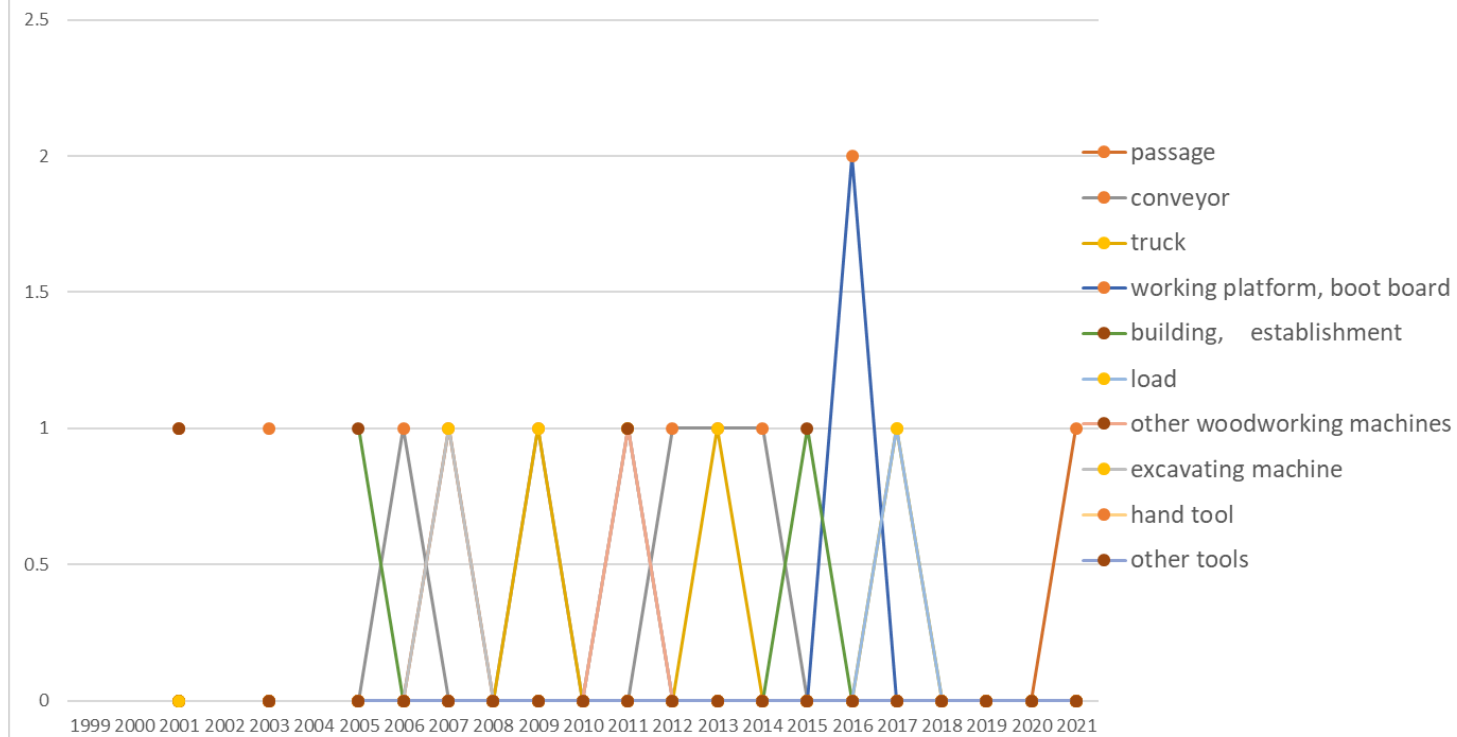


Transition of fatal and non-fatal accidents in large causal agents in code no. 020109 other coal mining (1999-2021)

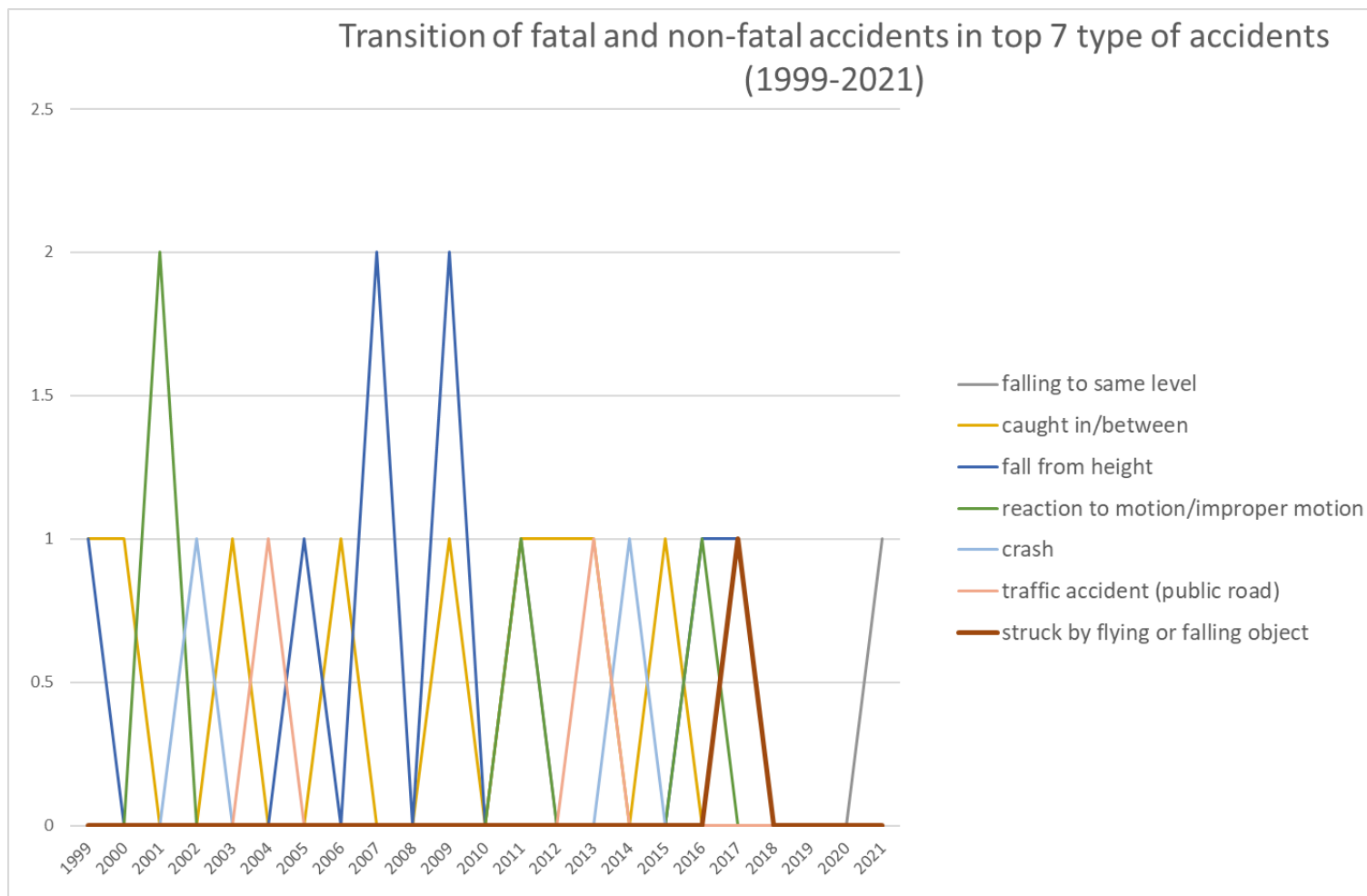


Transition of fatal and non-fatal accidents in middle causal agents in code no. 020109 other coal mining (1999-2021)

Transition of fatal and non-fatal accidents in top 10 small causal agents
(1999-2021)

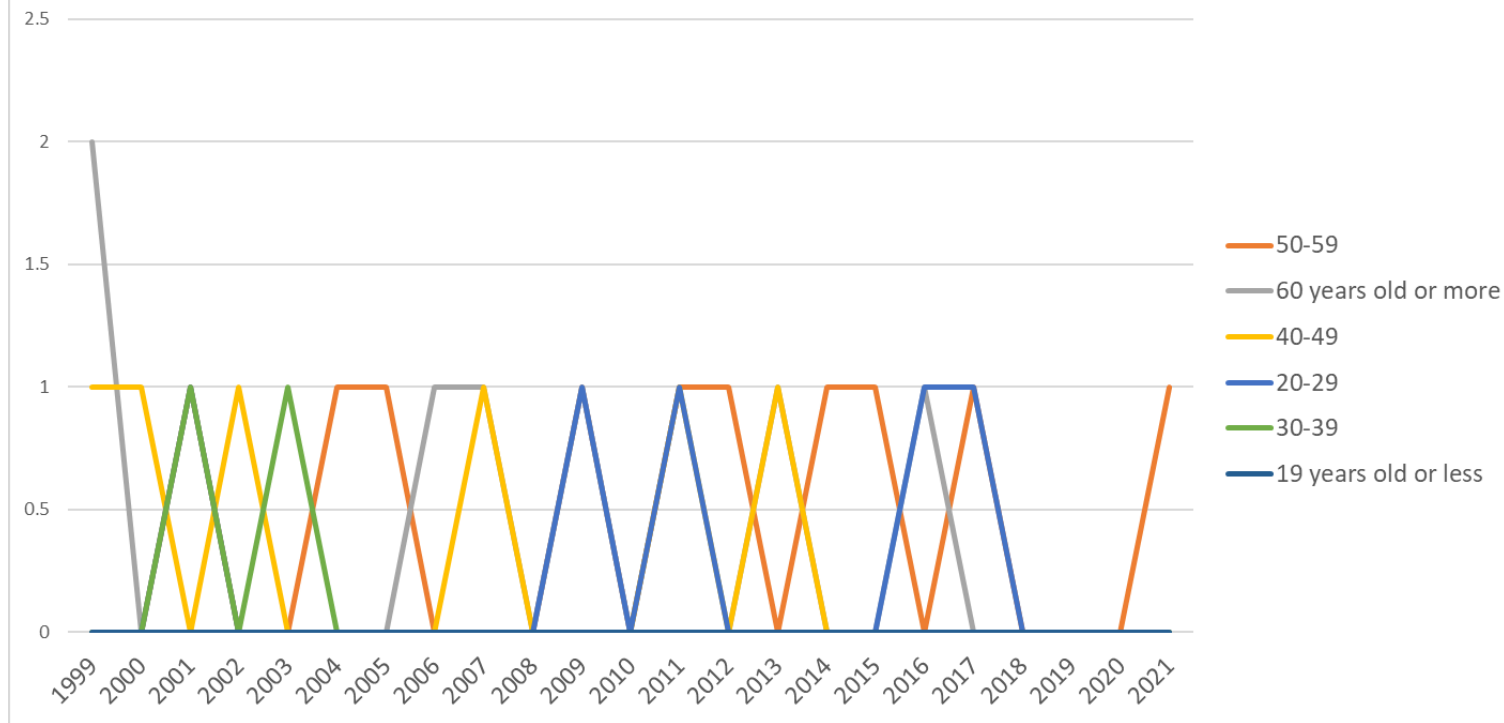


Transition of fatal and non-fatal accidents in small causal agents in code no. 020109 other coal mining (1999-2021)



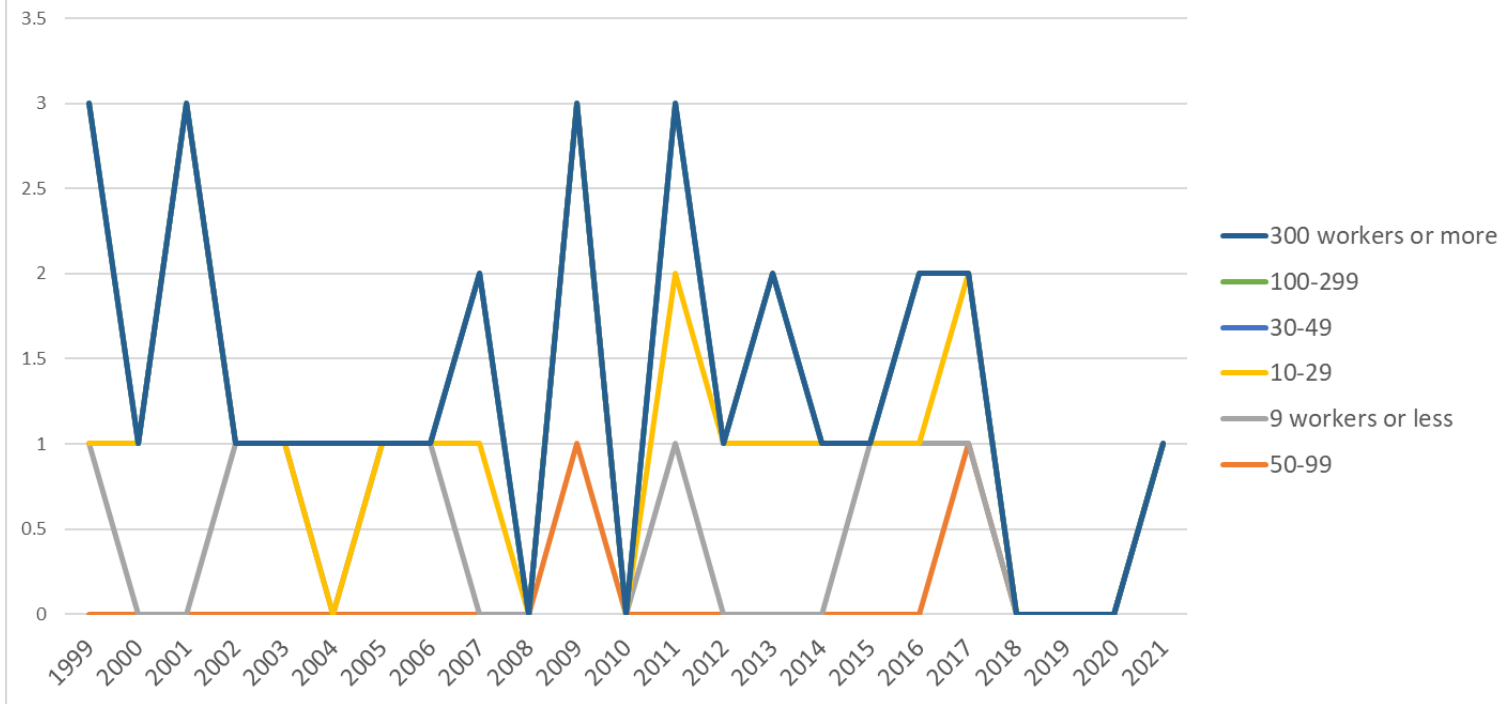
Transition of fatal and non-fatal accidents in type of accidents in code no. 020109 other coal mining (1999-2021)

Transition of fatal and non-fatal accidents in workers ages (1999-2021)

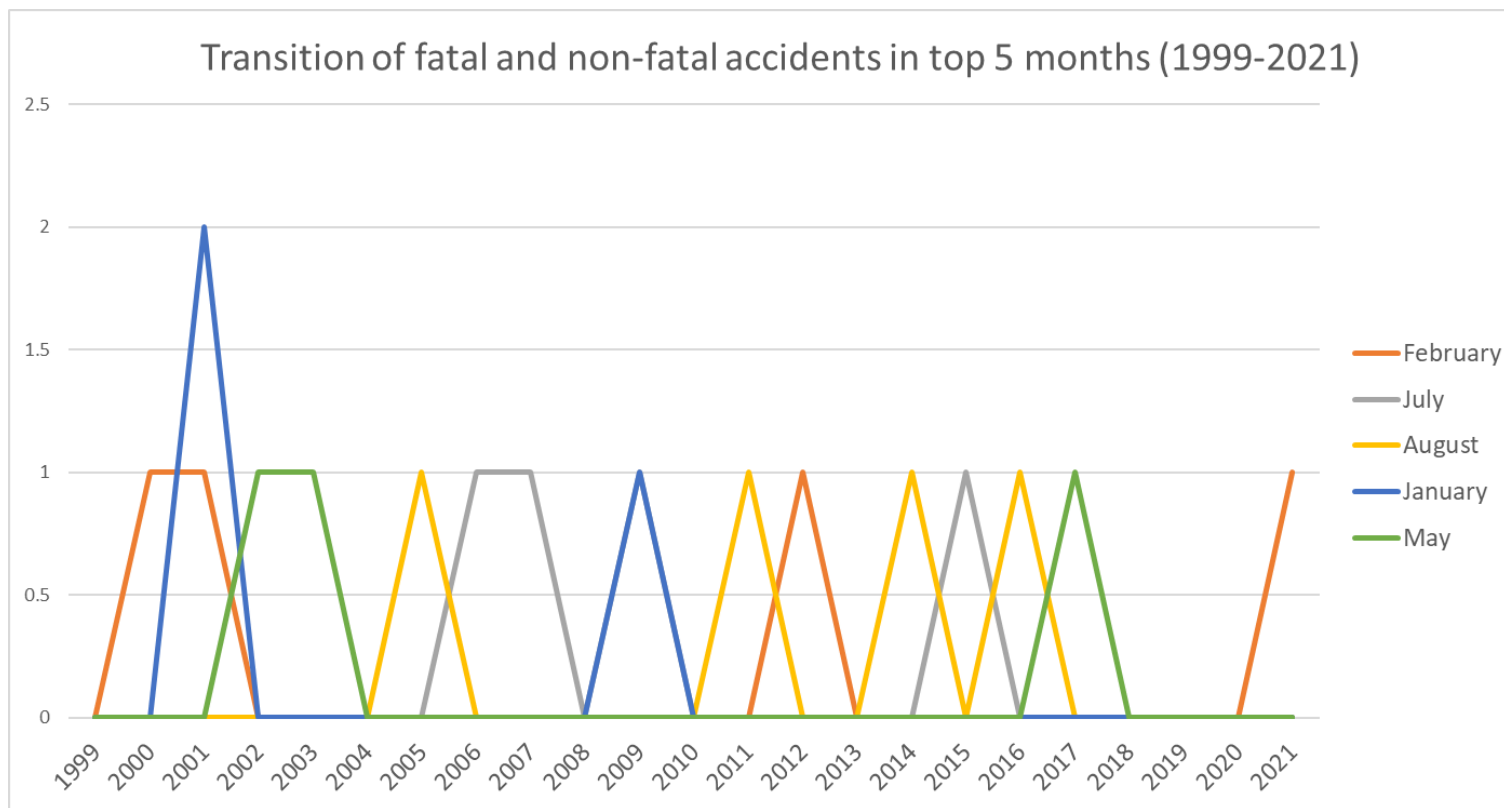


Transition of fatal and non-fatal accidents in workers ages in code no. 020109 other coal mining (1999-2021)

Transition of fatal and non-fatal accidents in workers scales (1999-2021)



Transition of fatal and non-fatal accidents in workers scales in code no. 020109 other coal mining (1999-2021)



Transition of fatal and non-fatal accidents in months in code no. 020109 other coal mining (1999-2021)

Transition of fatal and non-fatal accidents in top 7 prefectures (1999-2021)

Year	Chiba	Hokkaido	Tochigi	Aichi	Mie	Osaka	Kochi
1999	0	0	2.0	0	0	0	0
2000	0	0	1.0	0	0	0	0
2001	0	1.0	2.0	0	0	0	0
2002	0	0	0	0	0	0	0
2003	0	0	0	1.0	0	0	0
2004	0	0	0	0	0	0	0
2005	0	1.0	0	0	0	0	0
2006	0	1.0	0	0	0	0	0
2007	0	1.0	1.0	0	0	0	0
2008	0	0	0	0	0	0	0
2009	0	2.0	1.0	0	0	0	0
2010	0	0	0	0	0	0	0
2011	0	0	0	0	1.0	0	0
2012	0	1.0	0	0	0	0	0
2013	0	1.0	1.0	0	0	0	0
2014	0	1.0	0	0	0	0	0
2015	0	0	0	1.0	0	0	0
2016	0	1.0	0	0	0	0	0
2017	0	0	0	0	0	0	1.0
2018	0	0	0	0	0	0	0
2019	0	0	0	0	0	0	0
2020	0	0	0	0	0	0	0
2021	1.0	0	0	0	0	0	0

Transition of fatal and non-fatal accidents in prefectures in code no. 020109 other coal mining (1999-2021)

[illegible][illegible]

[illegible]

																											equipment
34	kiln, caldron																										kiln, caldron
35	electric equipment																										electric equipment
51	hazards, harmful substances																										hazards, harmful substances
71	natural environment																										natural environment
91	other causal agent																										other causal agent
92	no causal agent																										no causal agent
99	unclassifiable																										unclassifiable
	total	3	1	3	1	1	1	1	1	1	2		3		3	1	2	1	1	2	2				1	30	total

Transition of fatal and non-fatal accidents in small causal agents in code no. 020109 other coal mining (1999-2021)

code	Causal (S) agents	1999	2000	2001	2002	2003	2004	2005	2006	2007	2008	2009	2010	2011	2012	2013	2014	2015	2016	2017	2018	2019	2020	2021	total	Causal (S) agents
417	passage									1				1										1	3	passage
224	conveyor					1			1			1			1	1	1								6	conveyor
221	truck											1				1				1					3	truck
416	working platform, boot board																		2						2	working platform, boot board
418	building, establishment							1										1							2	building, establishment

[illegible]

[illegible]

[illegible]

[illegible]

[illegible]

712	standing tree																											standing tree
713	water																											water
714	abnormal environment																											abnormal environment
715	high/cold temperature environment																											high/cold temperature environment
719	other environments																											other environments
911	other causal agent																											other causal agent
921	no causal agent																											no causal agent
999	unclassifiable																											unclassifiable
	total			3		1		1	1	2		3		3	1	2	1	1	2	2					1	24		total

Transition of fatal and non-fatal accidents in type of accidents in code no. 020109 other coal mining (1999-2021)

[illegible]

17	road)					1									1								2	(public road)	
04	struck by flying or falling object																	1					1	struck by flying or falling object	
06	crashed by		1																				1	crashed by	
14	explosion	1																					1	explosion	
05	collapse																							collapse	
08	cut																							cut	
09	injury to the sole of the foot																							injury to the sole of the foot	
10	drown																							drown	
11	contact to high/low- temperature																							contact to high/low- temperature	
12	contact to harmful substance																							contact to harmful substance	
13	electric shock																							electric shock	
15	burst																							burst	
16	fire																							fire	
18	traffic accident (others)																							traffic accident (others)	
90	others																							others	
99	unclassifiable																							unclassifiable	
	total	3	1	3	1	1	1	1	1	2		3		3	1	2	1	1	2	2			1	30	total

code	Age	1999	2000	2001	2002	2003	2004	2005	2006	2007	2008	2009	2010	2011	2012	2013	2014	2015	2016	2017	2018	2019	2020	2021	total	Age
5	50-59			1			1	1				1		1	1		1	1		1				1	10	50-59
6	60 years old or more	2							1	1		1				1			1						7	60 years old or more
4	40-49	1	1		1					1				1		1									6	40-49
2	20-29			1								1		1					1	1					5	20-29
3	30-39			1		1																			2	30-39
1	19 years old or less																									19 years old or less
	total	3	1	3	1	1	1	1	1	2		3		3	1	2	1	1	2	2				1	30	total

code	Workers scale	1999	2000	2001	2002	2003	2004	2005	2006	2007	2008	2009	2010	2011	2012	2013	2014	2015	2016	2017	2018	2019	2020	2021	total	Workers scale
4	50-99											1								1				1	3	50-99
1	9 workers or less	1			1	1		1	1			2		1				1	1						10	9 workers or less
2	10-29		1	3						1				1	1	1	1			1					10	10-29
3	30-49	2					1			1				1		1			1						7	30-49
5	100-299																									100-299
6	300 workers or more																									300 workers or more
	total	3	1	3	1	1	1	1	1	2		3		3	1	2	1	1	2	2				1	30	total

[illegible]

code	Month	1999	2000	2001	2002	2003	2004	2005	2006	2007	2008	2009	2010	2011	2012	2013	2014	2015	2016	2017	2018	2019	2020	2021	total	Month
2	February		1	1											1									1	4	February
7	July								1	1		1						1							4	July
8	August							1						1			1		1						4	August
1	January			2								1													3	January
5	May				1	1														1					3	May
6	June	1					1												1						3	June
4	April											1								1					2	April
11	November									1						1									2	November
12	December	1												1											2	December
3	March													1											1	March
9	September															1									1	September
10	October	1																							1	October
	total	3	1	3	1	1	1	1	1	2		3		3	1	2	1	1	2	2				1	30	total

Transition of fatal and non-fatal accidents in prefectures in code no. 020109 other coal mining (1999-2021)

code	Prefecture	1999	2000	2001	2002	2003	2004	2005	2006	2007	2008	2009	2010	2011	2012	2013	2014	2015	2016	2017	2018	2019	2020	2021	total	Prefecture
12	Chiba													1										1	2	Chiba
1	Hokkaido			1				1	1	1		2		1	1	1	1		1						11	Hokkaido
9	Tochigi	2	1	2						1		1				1									8	Tochigi
23	Aichi					1														1					2	Aichi
24	Mie													1											1	Mie
27	Osaka																	1							1	Osaka
39	Kochi																			1					1	Kochi

[illegible]

28	Hyogo																										Hyogo
29	Nara																										Nara
30	Wakayama																										Wakayama
31	Tottori																										Tottori
32	Shimane																										Shimane
33	Okayama																										Okayama
34	Hiroshima																										Hiroshima
35	Yamaguchi																										Yamaguchi
36	Tokushima																										Tokushima
37	Kagawa																										Kagawa
38	Ehime																										Ehime
41	Saga																										Saga
43	Kumamoto																										Kumamoto
44	Oita																										Oita
45	Miyazaki																										Miyazaki
46	Kagoshima																										Kagoshima
47	Okinawa																										Okinawa
	total	3	1	3		1		1	1	2		3		3	1	2	1	1	2	2				1	28	total	

Data source : <https://anzeninfo.mhlw.go.jp/user/anzen/tok/anst00.htm>

Return to https://www.iisha.or.jp/english/statistics/202211_23.html