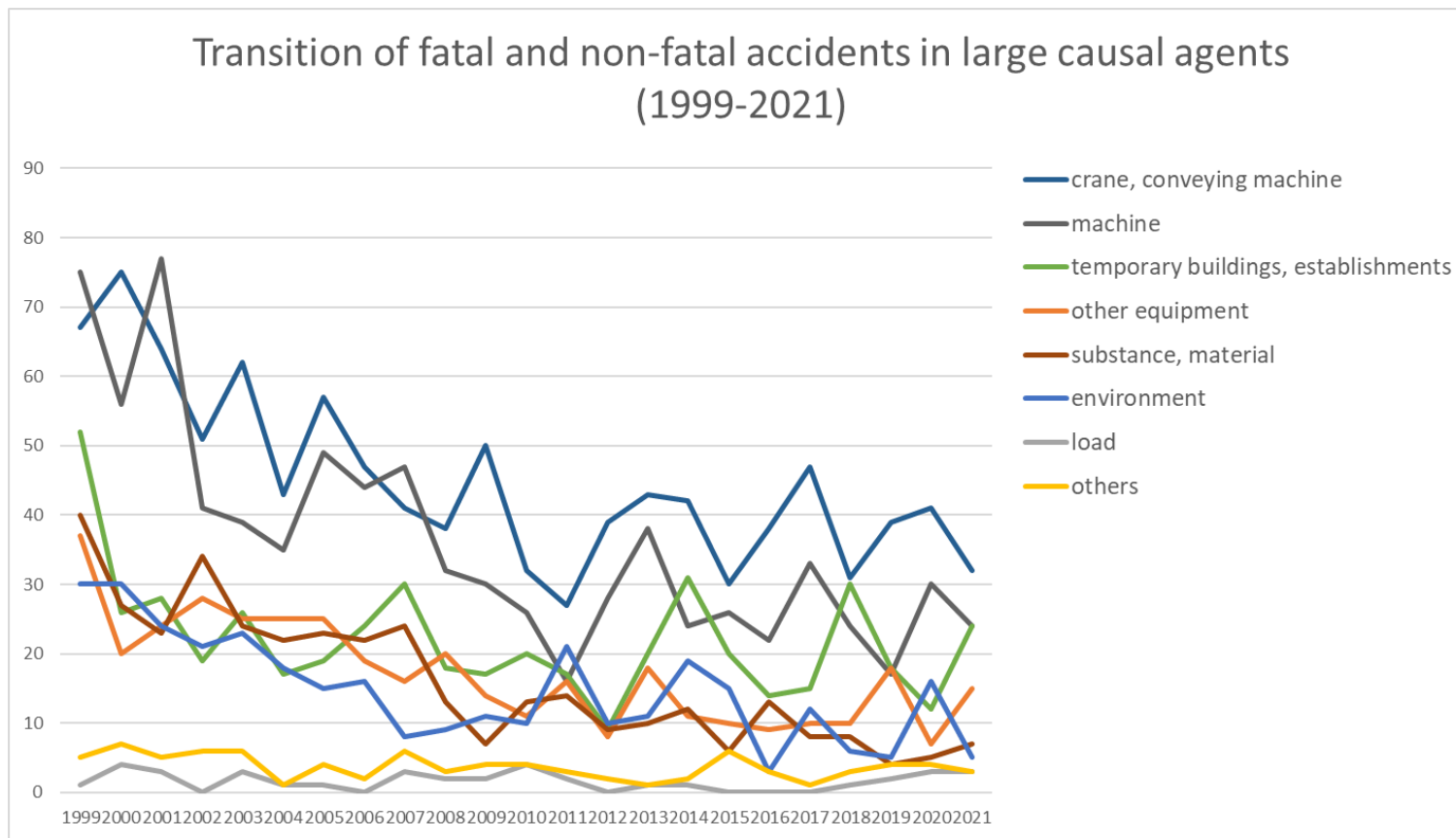
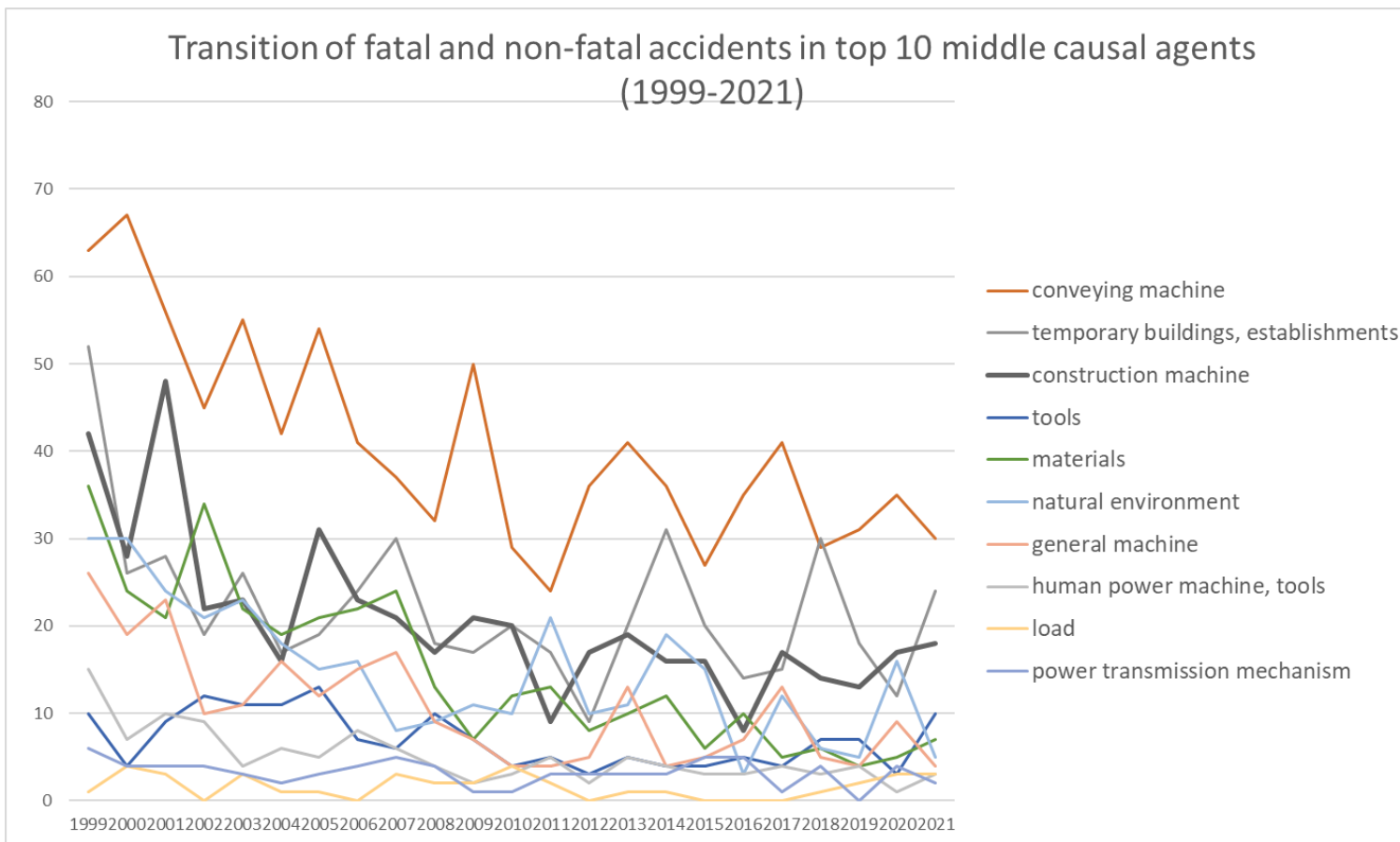


Transition of fatal and non-fatal accidents in each element like as causal agents, type of accidents, etc. in code no. 020201 quarrying (1999-2021)



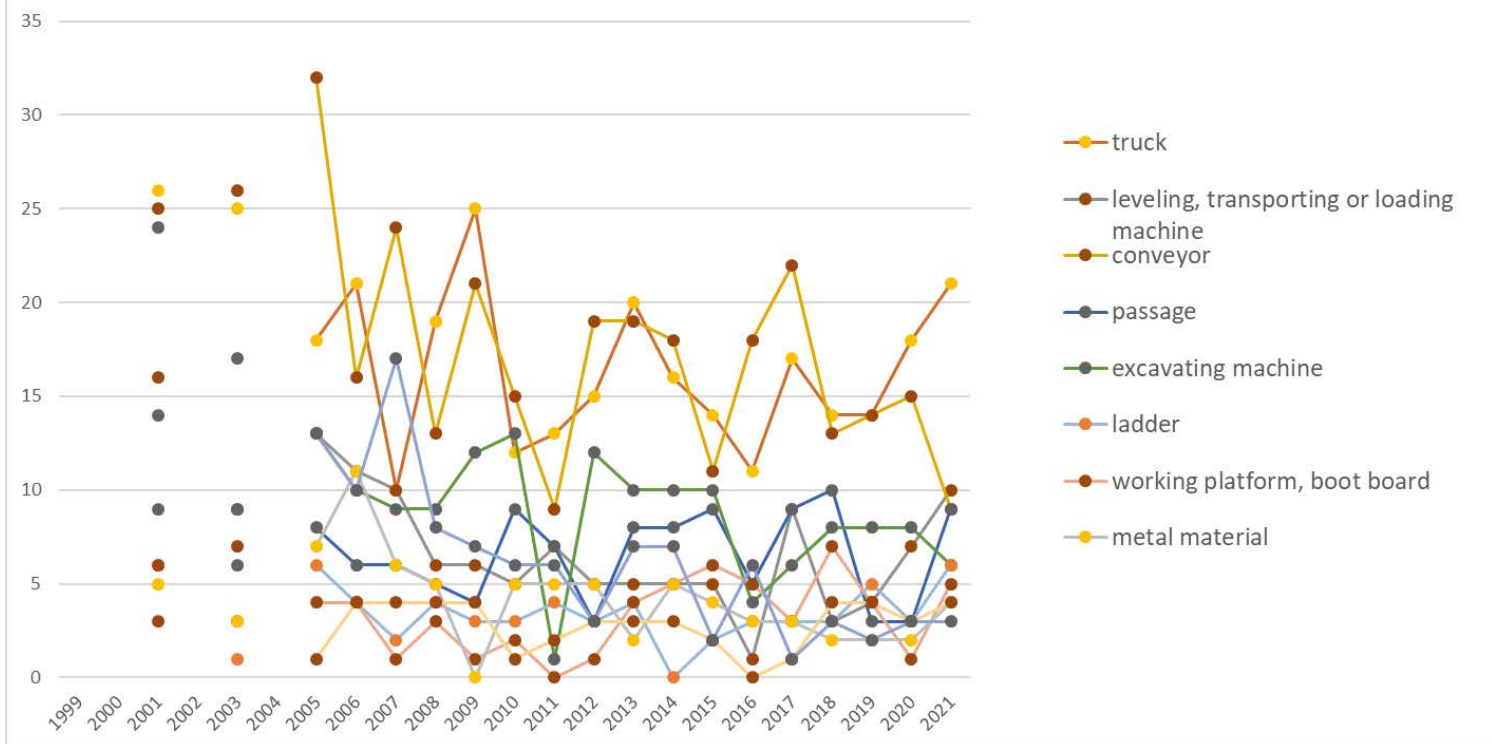
Transition of fatal and non-fatal accidents in large causal agents in code no. 020201 quarrying (1999-2021)

Transition of fatal and non-fatal accidents in top 10 middle causal agents
(1999-2021)



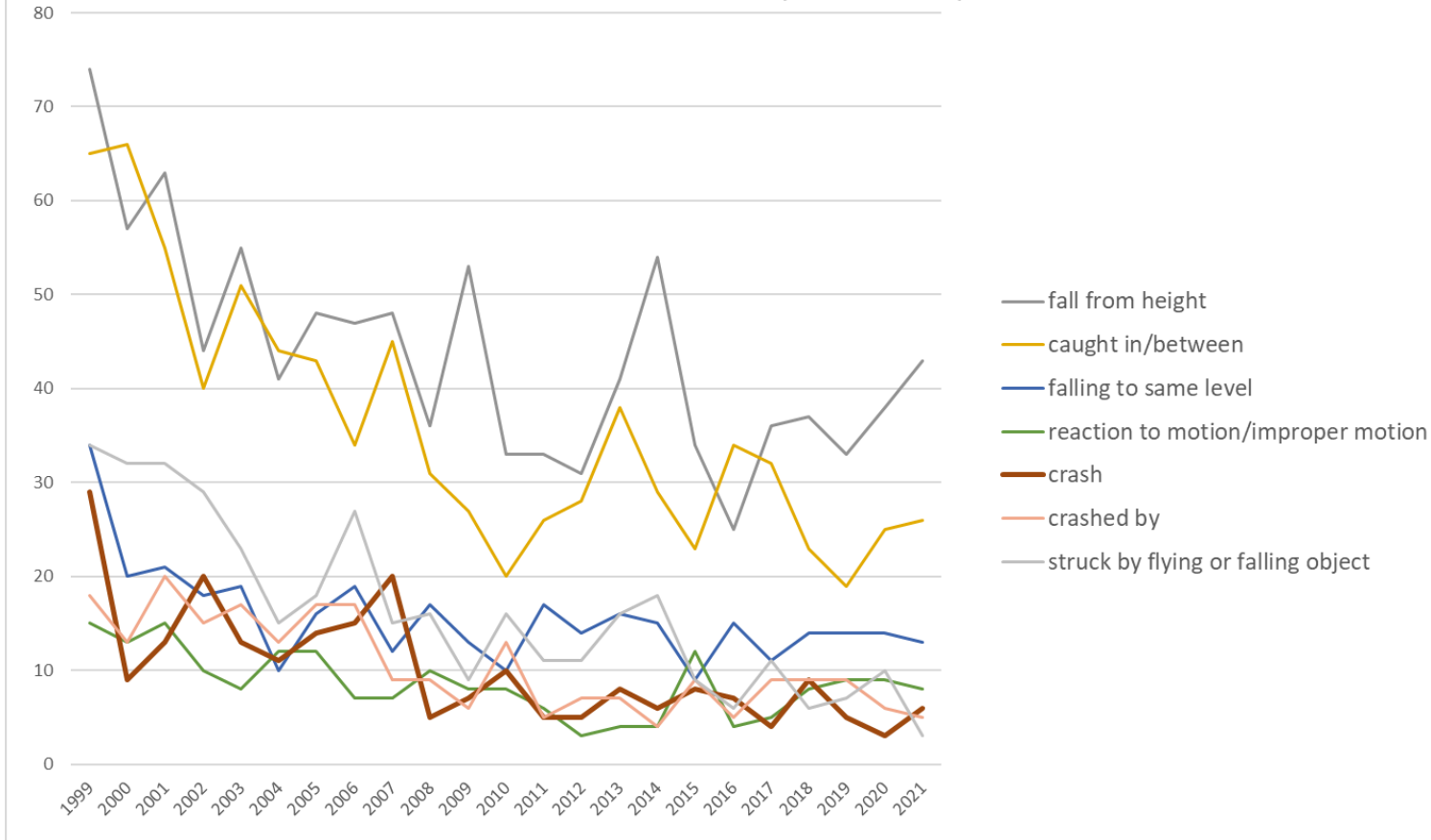
Transition of fatal and non-fatal accidents in middle causal agents in code no. 020201 quarrying (1999-2021)

Transition of fatal and non-fatal accidents in top 10 small causal agents (1999-2021)



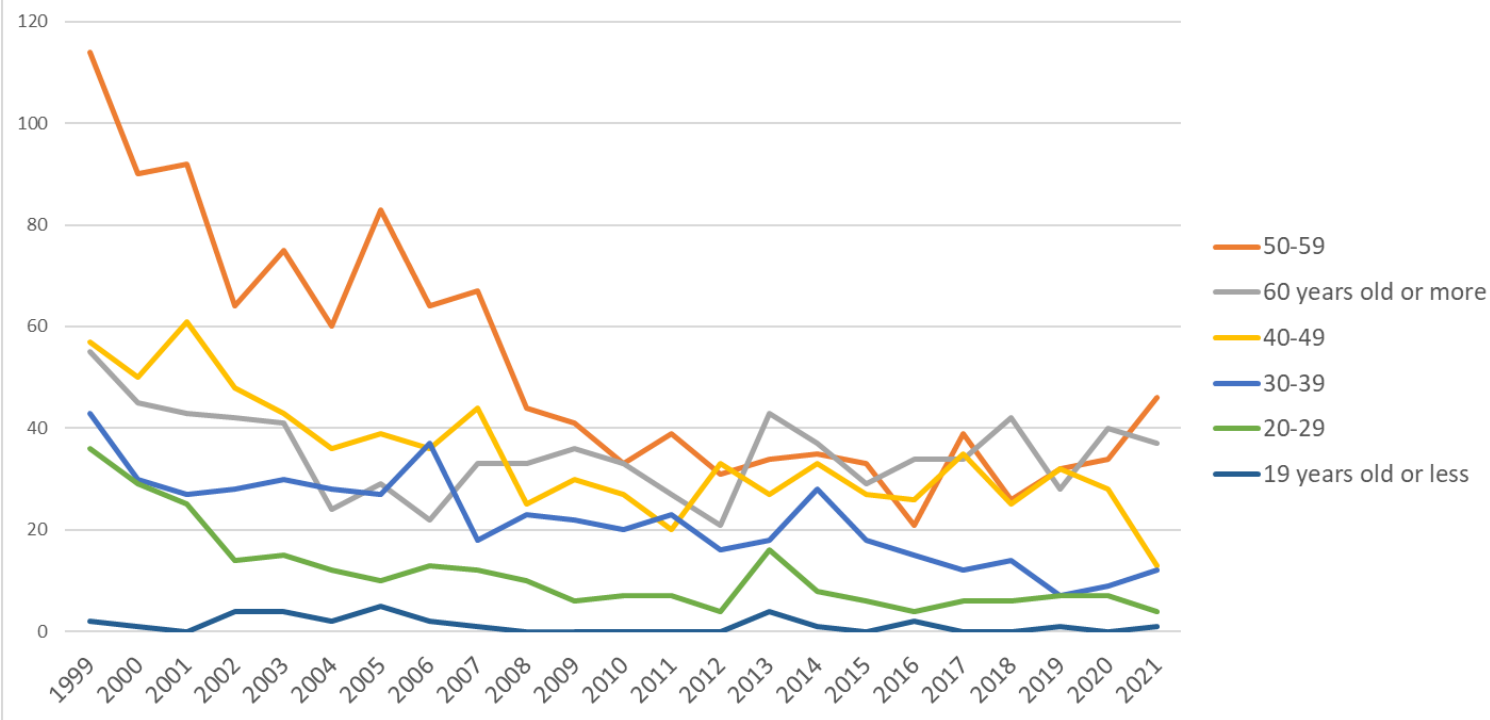
Transition of fatal and non-fatal accidents in small causal agents in code no. 020201 quarrying (1999-2021)

Transition of fatal and non-fatal accidents in top 7 type of accidents
(1999-2021)



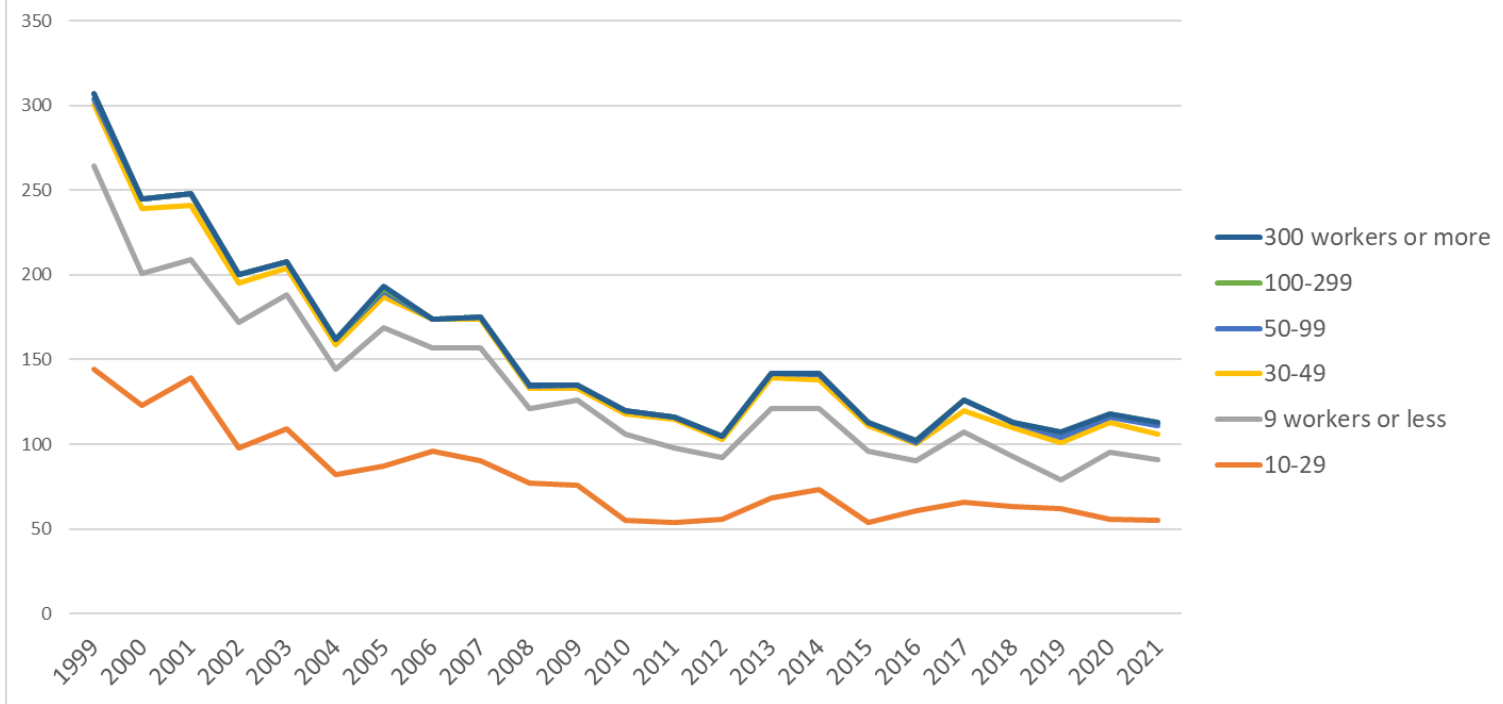
Transition of fatal and non-fatal accidents in type of accidents in code no. 020201 quarrying (1999-2021)

Transition of fatal and non-fatal accidents in workers ages (1999-2021)



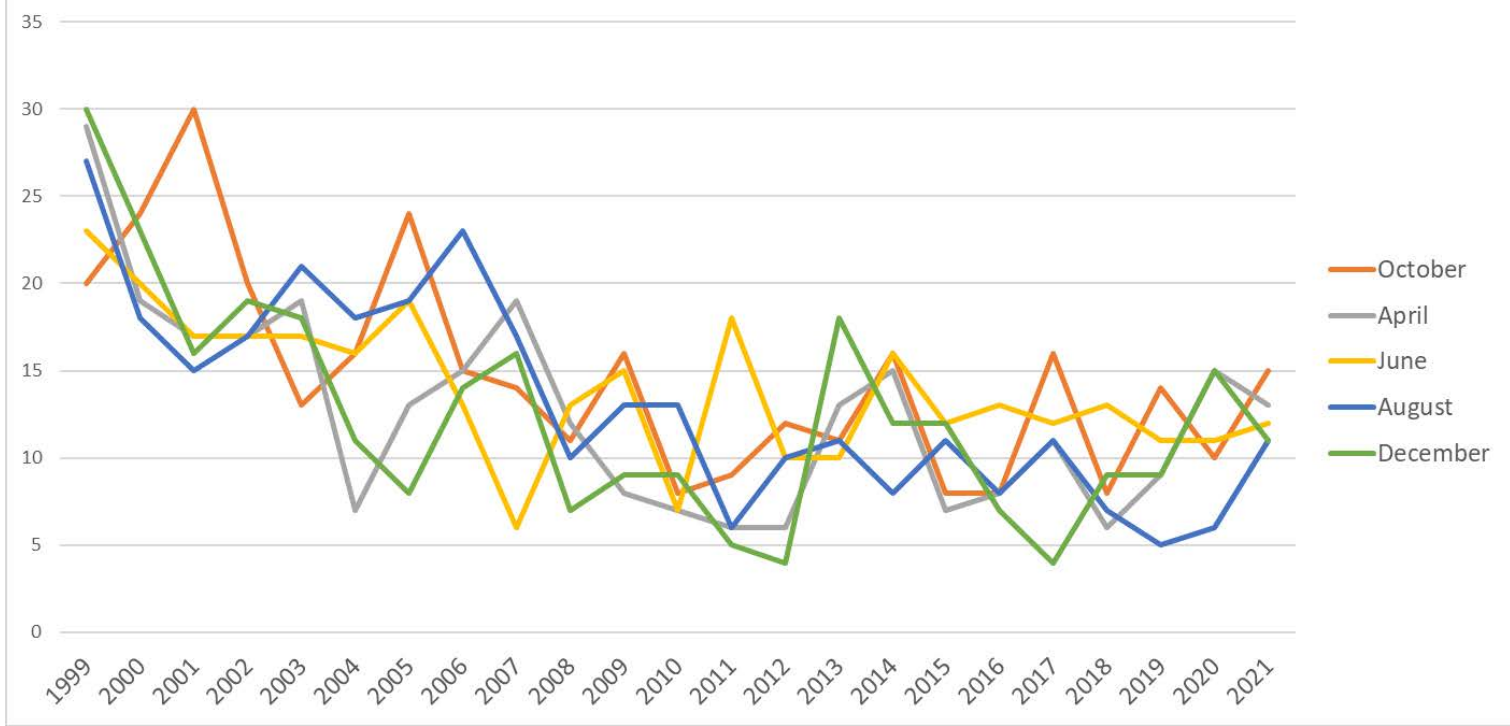
Transition of fatal and non-fatal accidents in workers ages in code no. 020201 quarrying (1999-2021)

Transition of fatal and non-fatal accidents in workers scales (1999-2021)



Transition of fatal and non-fatal accidents in workers scales in code no. 020201 quarrying (1999-2021)

Transition of fatal and non-fatal accidents in top 5 months (1999-2021)



Transition of fatal and non-fatal accidents in months in code no. 020201 quarrying (1999-2021)

4	establishments	52	26	28	19	26	17	19	24	30	18	17	20	17	9	20	31	20	14	15	30	18	12	24	506	buildings, establishments
3	other equipment	37	20	24	28	25	25	25	19	16	20	14	11	16	8	18	11	10	9	10	10	18	7	15	396	other equipment
5	substance, material	40	27	23	34	24	22	23	22	24	13	7	13	14	9	10	12	6	13	8	8	4	5	7	368	substance, material
7	environment	30	30	24	21	23	18	15	16	8	9	11	10	21	10	11	19	15	3	12	6	5	16	5	338	environment
6	load	1	4	3		3	1	1		3	2	2	4	2		1	1				1	2	3	3	37	load
9	others	5	7	5	6	6	1	4	2	6	3	4	4	3	2	1	2	6	3	1	3	4	4	3	85	others
	total	307	245	248	200	208	162	193	174	175	135	135	120	116	105	142	142	113	102	126	113	107	118	113	3,599	total

Transition of fatal and non-fatal accidents in middle causal agents in code no. 020201 quarrying (1999-2021)

code	Causal (M) agents	1999	2000	2001	2002	2003	2004	2005	2006	2007	2008	2009	2010	2011	2012	2013	2014	2015	2016	2017	2018	2019	2020	2021	total	Causal (M) agents
22	conveying machine	63	67	56	45	55	42	54	41	37	32	50	29	24	36	41	36	27	35	41	29	31	35	30	936	conveying machine
41	temporary buildings, establishments	52	26	28	19	26	17	19	24	30	18	17	20	17	9	20	31	20	14	15	30	18	12	24	506	temporary buildings, establishments
14	construction machine	42	28	48	22	23	16	31	23	21	17	21	20	9	17	19	16	16	8	17	14	13	17	18	476	construction machine
37	tools	10	4	9	12	11	11	13	7	6	10	7	4	5	3	5	4	4	5	4	7	7	3	10	161	tools
52	materials	36	24	21	34	22	19	21	22	24	13	7	12	13	8	10	12	6	10	5	6	4	5	7	341	materials
71	natural environment	30	30	24	21	23	18	15	16	8	9	11	10	21	10	11	19	15	3	12	6	5	16	5	338	natural environment

13	woodworking machine		3		3	1		2				1	1					1		1						13	woodworking machine	
35	electric equipment		2	1			3	1							1											8	electric equipment	
11	engine							1	1	2					1								1			6	engine	
34	kiln, caldron	1								1								1								3	kiln, caldron	
31	pressure vessel							1										1								2	pressure vessel	
17	mobile silviculture machine																							1			1	mobile silviculture machine
32	chemical facilities							1																			1	chemical facilities
99	unclassifiable												1														1	unclassifiable
	total	307	245	248	200	208	162	193	174	175	135	135	120	116	105	142	142	113	102	126	113	107	118	113	3,599	total		

Transition of fatal and non-fatal accidents in small causal agents in code no. 020201 quarrying (1999-2021)

code	Causal (S) agents	1999	2000	2001	2002	2003	2004	2005	2006	2007	2008	2009	2010	2011	2012	2013	2014	2015	2016	2017	2018	2019	2020	2021	total	Causal (S) agents
221	truck			26		25		18	21	10	19	25	12	13	15	20	16	14	11	17	14	14	18	21	329	truck
141	leveling, transporting or loading machine			16		9		13	11	10	6	6	5	7	5	5	5	5	1	9	3	4	7	10	137	leveling, transporting or loading machine
224	conveyor			25		26		32	16	24	13	21	15	9	19	19	18	11	18	22	13	14	15	9	339	conveyor
417	passage			9		6		8	6	6	5	4	9	7	3	8	8	9	5	9	10	3	3	9	127	passage
142	excavating machine			24		9		13	10	9	9	12	13	1	12	10	10	10	4	6	8	8	8	6	182	excavating machine
371	ladder			6		1		6	4	2	4	3	3	4	3	4		2	3	3	3	5	3	6	65	ladder

719	other environments			4		1			1			2	1	4	1	2	6	2	1	2	1		1	1	30	other environments	
372	slinging tool			2		3		2	2	1	3	2				1	1	1	1		3	1		1	24	slinging tool	
414	opening			1		2			1	3		1	1	1			1							1	13	opening	
911	other causal agent			1				2	1	2				1	1	1		1						1	1	12	other causal agent
415	roof, beam, haze, crossbeam, principal rafter			2		1		2		1	1	2	1												1	11	roof, beam, haze, crossbeam, principal rafter
715	high/cold temperature environment			1		2		1					1	1							1		2	1	11	high/cold temperature environment	
219	other powered crane			3				1			1		1							2				1	10	other powered crane	
612	machine/equipment as load			1		1				1			1											1	6	machine/equipment as load	
143	foundation work machine					1		1								1								1	4	foundation work machine	
713	water												2								1			1	4	water	
332	arc welding equipment			1					1															1	3	arc welding equipment	
217	lumberyard equipment, logging cableway																							1	1	lumberyard equipment, logging cableway	
419	other temporary buildings, establishments			2		1			2	1	1	4	1	1		1	6	1	1	1	4	6			33	other temporary buildings, establishments	

211	crane			2		2		1	3	2	1		1	1	2	1				2	1	3	4		26	crane
231	cars, bus, motorcycle			1		5		1	3	1	2		1			2		1	2	1	3	1			24	cars, bus, motorcycle
225	loader			3		2		3	2	1		1		1		1		3	1	2	1	1			22	loader
212	mobile crane			1						1	1		1	1	1		4	2	2			2			16	mobile crane
229	other powered conveying machines			2					1	1		1	2	1		1	1	1	3			2			16	other powered conveying machines
712	standing tree			2		4		1		1				2	1		1	1		1			1		15	standing tree
222	forklift					1		1	1	1		2		1	1	1		1				1			12	forklift
145	demolition machine			1				2	1			1				1			1	2	1	1			11	demolition machine
529	other materials			1		1		1		1				1		1			1	1	1				9	other materials
153	grinding machine, buffing machine			2						1	1				2	2									8	grinding machine, buffing machine
511	explosive substance					1		2					1	1					2	1					8	explosive substance
331	gas welding equipment					1		1				1		1		1	1						1		7	gas welding equipment
111	engine							1	1	2				1						1					6	engine
519	other hazards, harmful substances			1														3	1	1					6	other hazards, harmful substances
131	circular sawing machine					1		1				1				1		1							5	circular sawing machine
361	human power cranes									1					2	1		1							5	human power cranes
522	lumber, bamboo			1		1			1			1	1												5	lumber, bamboo
239	other vehicles			1							1						1					1			4	other vehicles

	falling object																									or falling object
11	contact to high/low-temperature	12	5		1	4	4	6		1		1	1	2		2			3	1	1	3	4	2	53	contact to high/low-temperature
17	traffic accident (public road)	5	4	6		1		1	2	1	2	2		2		3	2	1		3		1	1	2	39	traffic accident (public road)
15	burst		2		1	2									1								1	2	9	burst
05	collapse	11	15	9	11	11	7	12	4	9	4	3	4	4	4	2	5	3	1	6		3	4	1	133	collapse
08	cut	6	5	7	8	1	2	3	1	4	4	4	1	1	1	2	2	2	2	4	2	3	2	1	68	cut
90	others	1	2		1	1	1	1		2	1	2	2	2		1		2		1				1	21	others
18	traffic accident (others)			1	2		1		1				1		1	1	1								9	traffic accident (others)
09	injury to the sole of the foot	1		1		1				1						1				1	1	1			8	injury to the sole of the foot
14	explosion	2		2										1						1	2				8	explosion
12	contact to harmful substance			1		1							1							1	1		1		6	contact to harmful substance
13	electric shock		1	2			1	1		1															6	electric shock
16	fire		1					1								1	1								4	fire
10	drown													1											1	drown
99	unclassifiable																									unclassifiable
	total	307	245	248	200	208	162	193	174	175	135	135	120	116	105	142	142	113	102	126	113	107	118	113	3,599	total

code	Age	1999	2000	2001	2002	2003	2004	2005	2006	2007	2008	2009	2010	2011	2012	2013	2014	2015	2016	2017	2018	2019	2020	2021	total	Age
5	50-59	114	90	92	64	75	60	83	64	67	44	41	33	39	31	34	35	33	21	39	26	32	34	46	1,197	50-59
6	60 years old or more	55	45	43	42	41	24	29	22	33	33	36	33	27	21	43	37	29	34	34	42	28	40	37	808	60 years old or more
4	40-49	57	50	61	48	43	36	39	36	44	25	30	27	20	33	27	33	27	26	35	25	32	28	13	795	40-49
3	30-39	43	30	27	28	30	28	27	37	18	23	22	20	23	16	18	28	18	15	12	14	7	9	12	505	30-39
2	20-29	36	29	25	14	15	12	10	13	12	10	6	7	7	4	16	8	6	4	6	6	7	7	4	264	20-29
1	19 years old or less	2	1		4	4	2	5	2	1						4	1		2			1		1	30	19 years old or less
	total	307	245	248	200	208	162	193	174	175	135	135	120	116	105	142	142	113	102	126	113	107	118	113	3,599	total

Transition of fatal and non-fatal accidents in workers scales in code no. 020201 quarrying (1999-2021)

code	Workers scale	1999	2000	2001	2002	2003	2004	2005	2006	2007	2008	2009	2010	2011	2012	2013	2014	2015	2016	2017	2018	2019	2020	2021	total	Workers scale
2	10-29	144	123	139	98	109	82	87	96	90	77	76	55	54	56	68	73	54	61	66	63	62	56	55	1,844	10-29
1	9 workers or less	120	78	70	74	79	62	82	61	67	44	50	51	44	36	53	48	42	29	41	30	17	39	36	1,253	9 workers or less
3	30-49	37	38	32	23	16	15	18	17	17	12	7	12	17	11	18	17	15	10	13	17	22	18	15	417	30-49
4	50-99	3	6	7	5	4	3	3		1	1	2	2	1	2	3	3	2	1	6	3	3	3	5	69	50-99
5	100-299	3						2			1						1		1			3	2	2	15	100-299
6	300 workers or more							1																	1	300 workers or more
	total	307	245	248	200	208	162	193	174	175	135	135	120	116	105	142	142	113	102	126	113	107	118	113	3,599	total

Transition of fatal and non-fatal accidents in months in code no. 020201 quarrying (1999-2021)

code	Month	1999	2000	2001	2002	2003	2004	2005	2006	2007	2008	2009	2010	2011	2012	2013	2014	2015	2016	2017	2018	2019	2020	2021	total	Month
10	October	20	24	30	20	13	16	24	15	14	11	16	8	9	12	11	16	8	8	16	8	14	10	15	338	October

4	April	29	19	17	17	19	7	13	15	19	12	8	7	6	6	13	15	7	8	11	6	9	15	13	291	April
6	June	23	20	17	17	17	16	19	13	6	13	15	7	18	10	10	16	12	13	12	13	11	11	12	321	June
8	August	27	18	15	17	21	18	19	23	17	10	13	13	6	10	11	8	11	8	11	7	5	6	11	305	August
12	December	30	23	16	19	18	11	8	14	16	7	9	9	5	4	18	12	12	7	4	9	9	15	11	286	December
5	May	30	20	21	13	24	13	13	15	15	12	9	11	5	7	15	9	9	5	13	12	8	5	10	294	May
1	January	21	16	18	15	11	16	16	11	18	11	10	11	9	8	12	8	5	10	8	11	9	9	10	273	January
2	February	24	20	24	16	22	15	18	12	11	9	6	3	17	8	9	18	14	8	11	5	8	7	9	294	February
3	March	19	25	29	17	11	15	17	13	13	16	10	14	10	13	9	11	7	14	9	15	8	6	8	309	March
7	July	30	19	19	11	16	14	19	14	9	14	14	12	6	9	11	7	9	13	14	7	7	9	6	289	July
11	November	25	23	23	22	18	9	17	15	16	9	8	11	14	10	16	15	8	6	8	10	7	12	4	306	November
9	September	29	18	19	16	18	12	10	14	21	11	17	14	11	8	7	7	11	2	9	10	12	13	4	293	September
	total	307	245	248	200	208	162	193	174	175	135	135	120	116	105	142	142	113	102	126	113	107	118	113	3,599	total

Transition of fatal and non-fatal accidents in prefectures in code no. 020201 quarrying (1999-2021)

code	Prefecture	1999	2000	2001	2002	2003	2004	2005	2006	2007	2008	2009	2010	2011	2012	2013	2014	2015	2016	2017	2018	2019	2020	2021	total	Prefecture
1	Hokkaido	18	14	14		10		14	7	7	4	5	9	10	5	8	11	5	4	15	6	10	8	9	193	Hokkaido
28	Hyogo	16	11	16		6		11	8	10	7	7	12	8	8	3	8	4	2	3	1	2	8	8	159	Hyogo
33	Okayama	7	9	9		8		7	9	10	7	6	4	6	5	9	7	5	7	9	5	4	5	8	146	Okayama
24	Mie	11	17	17		9		4	3		4	4	4	1	1	7	5	5	4	4	3	5	2	8	118	Mie
40	Fukuoka	16	9	7		5		3	12	6	7	6	5	8	3	4	4	4	4	3	5	4	2	7	124	Fukuoka
3	Iwate	8	2	6		4		5	4	2	4	3	3	1	2	4	3	2	6	5	1	1	2	6	74	Iwate
8	Ibaraki	6	4	5		8		5	3	6	4	3	2	4	5	2	1	4	3	3	7	4	6	5	90	Ibaraki
38	Ehime	14	10	14		15		11	12	12	4	9	9	12	5	11	12	9	4	4	6	2	3	4	182	Ehime
34	Hiroshima	15	14	11		6		6	5	11	1	5	3	4	3	8	6	4	1	5	7	5	3	4	127	Hiroshima

4	Miyagi	5	5	3		2		6	8		2	5	1	4	6	6	8	6	3	6	4	3	2	4	89	Miyagi
9	Tochigi	4	3	1		5		5	5	7	6	4	2	9	4	5	2	3	4	3	6	1	4	4	87	Tochigi
41	Saga	5	2	7		3		1	5	2	4	2	4	1	2	1	2	4	1	1	4	2	2	4	59	Saga
2	Aomori	6	3	7		9		3	1		3	4	3	1	2	2	2		2	2		2	2	4	58	Aomori
43	Kumamoto	17	19	9		7		11	12	6	3	5	7	4	5	5	3	2	2	5	4	6	6	3	141	Kumamoto
23	Aichi	9	10	14		10		5	5	5	9	4	5	5	11	6	6	2	4	1	7	6	7	3	134	Aichi
7	Fukushima	7	12	2		11		11	4	5	5	1	4	2	3	6	3	6	5	3	7	2	2	3	104	Fukushima
35	Yamaguchi	5	5	5		5		2	8	4	1	4	5	1	2	3	4	4	3	1	2		3	3	70	Yamaguchi
42	Nagasaki	10	6	7		3		7	5	5	4	5	2	4		4	6	2	2	4	2	7	5	2	92	Nagasaki
46	Kagoshima	5	6	5		6		6	9	13	3	1	3	4	3	3	4	2	4	5	4	1	3	2	92	Kagoshima
22	Shizuoka	4	4	1		8		4	3	4	8	6	2	1	7	1	5	3	1	5	1	2	1	2	73	Shizuoka
6	Yamagata	6	6	9		6		5	5	2	3	1	3	1	1	3	5	3	3	2		4	2	2	72	Yamagata
26	Kyoto	3	3	4		8		4	2	4	2	1	1	1	2	6	5	3	2	6	1		5	2	65	Kyoto
32	Shimane	8	5	3		3		6	1	6	3	4	2	3	2	1		1	3		4	1		2	58	Shimane
5	Akita	5	7	2		4		3	2	4		2	1	2	3	4	4	1	2	1	3	4	1	2	57	Akita
13	Tokyo	8	7	3		1		3	4	4	1	3	1	3	4	2	2	2	1	1	2		2	2	56	Tokyo
17	Ishikawa	4	2	5		5		5		1	1	2	1			4	2	2		1			1	2	38	Ishikawa
37	Kagawa	18	7	9		8		11	5	7	7	5	3			2	4	2	5	2	3	4	3	1	106	Kagawa
20	Nagano	7	4	2		3		2	3	5	3	6	3	1		3	1	4	1	1	3	4	5	1	62	Nagano
27	Osaka	3	3	7		2		3		1	3	1	3	3	1	1		4	2	5	1	2	3	1	49	Osaka
44	Oita	5	4	2		3		3	3	4	3	2	2	1	1	2	4	1	3		1	2	2	1	49	Oita
14	Kanagawa	3	2	6		2			2	2	3	1	1		1	2	4	2		2		1	2	1	37	Kanagawa
45	Miyazaki	4	1	8							1	3		1		1	1	1		2	1	2	2	1	29	Miyazaki

15	Niigata	3	4	2				2	1	1					1					1			1	16	Niigata	
30	Wakayama	4	1	2		1		2	2		1						1						1	15	Wakayama	
21	Gifu	10	6	6		7		5	6	5	3	1	1	2	1	2	1	3	4	1	2	2	3		71	Gifu
10	Gunma	4	1	5		4			2	2	2	3	1	1	1	3	1			1	1	1	1		34	Gunma
18	Fukui	5	4	1		1		2		2			1	1	1	1		2	1	3	2		1		28	Fukui
31	Tottori	3	3	2		4		2	1	2	1	1	1	1		1	1		2	1	1		1		28	Tottori
39	Kochi	5		4		1		2		3	2	1	2	1				1	1		2	2			27	Kochi
36	Tokushima	1	2	1		1			2		1	4	1		1		2	1	1	4	1	1	2		26	Tokushima
29	Nara	1				2		2	1	2	1	1			2	1	1	2	2			4	1		23	Nara
25	Shiga		3	1				2	2	2		1	1	1		2		1	1	1		1	1		20	Shiga
11	Saitama	4	3	1				1	1	1	1	1	1			1				2	1	1			19	Saitama
19	Yamanashi	2	1			2		1			1	1	1	2	1				1	1	1	2	2		19	Yamanashi
12	Chiba	2									1	1		1	1			1	1						8	Chiba
16	Toyama	1	1	2				1								2				1					8	Toyama
47	Okinawa			1				1								1				1	1				5	Okinawa
	total	307	245	248		208		193	174	175	135	135	120	116	105	142	142	113	102	126	113	107	118	113	3,237	total

Data source : <https://anzeninfo.mhlw.go.jp/user/anzen/tok/anst00.htm>

Return to https://www.jisha.or.jp/english/statistics/202211_23.html