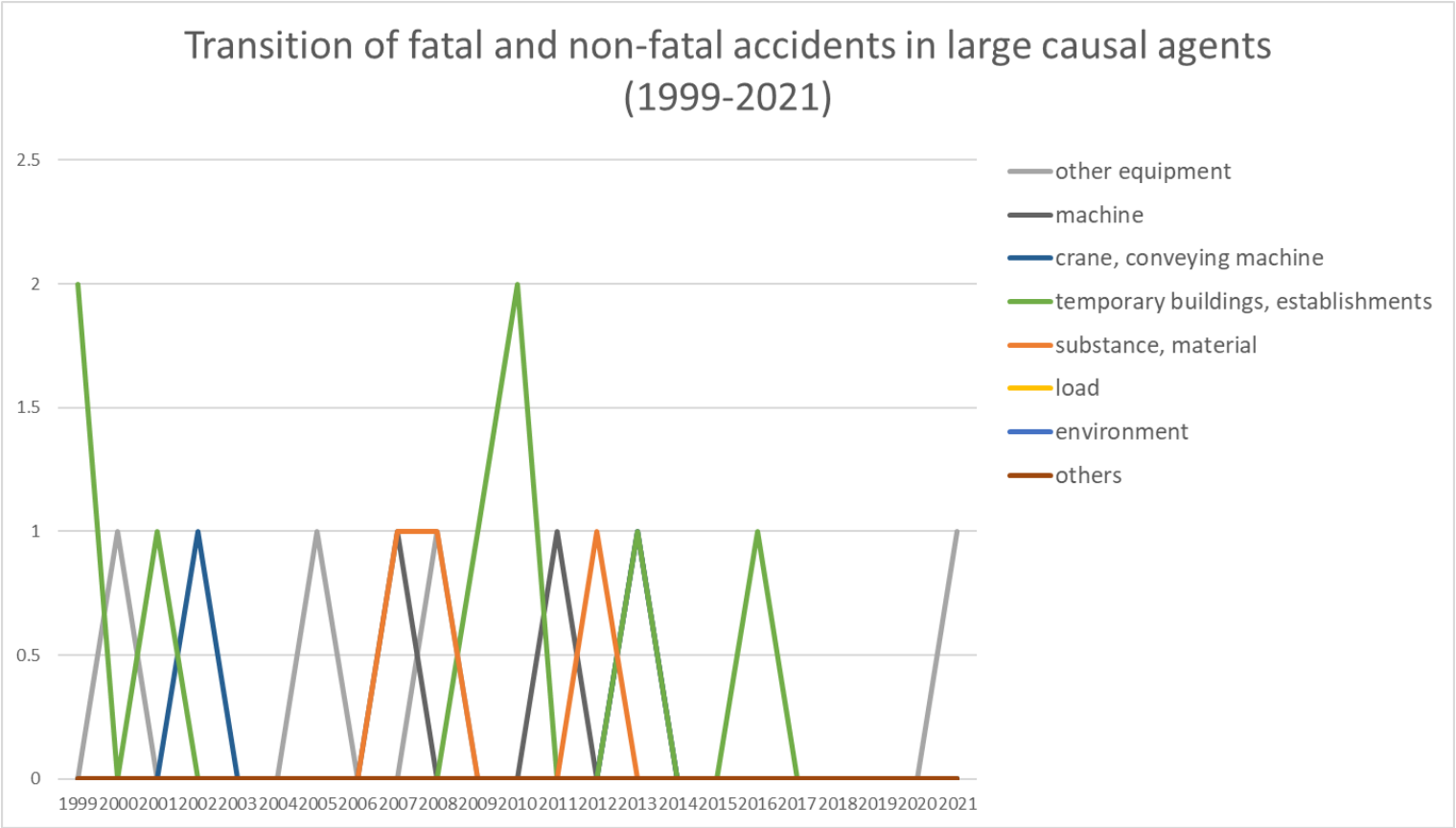
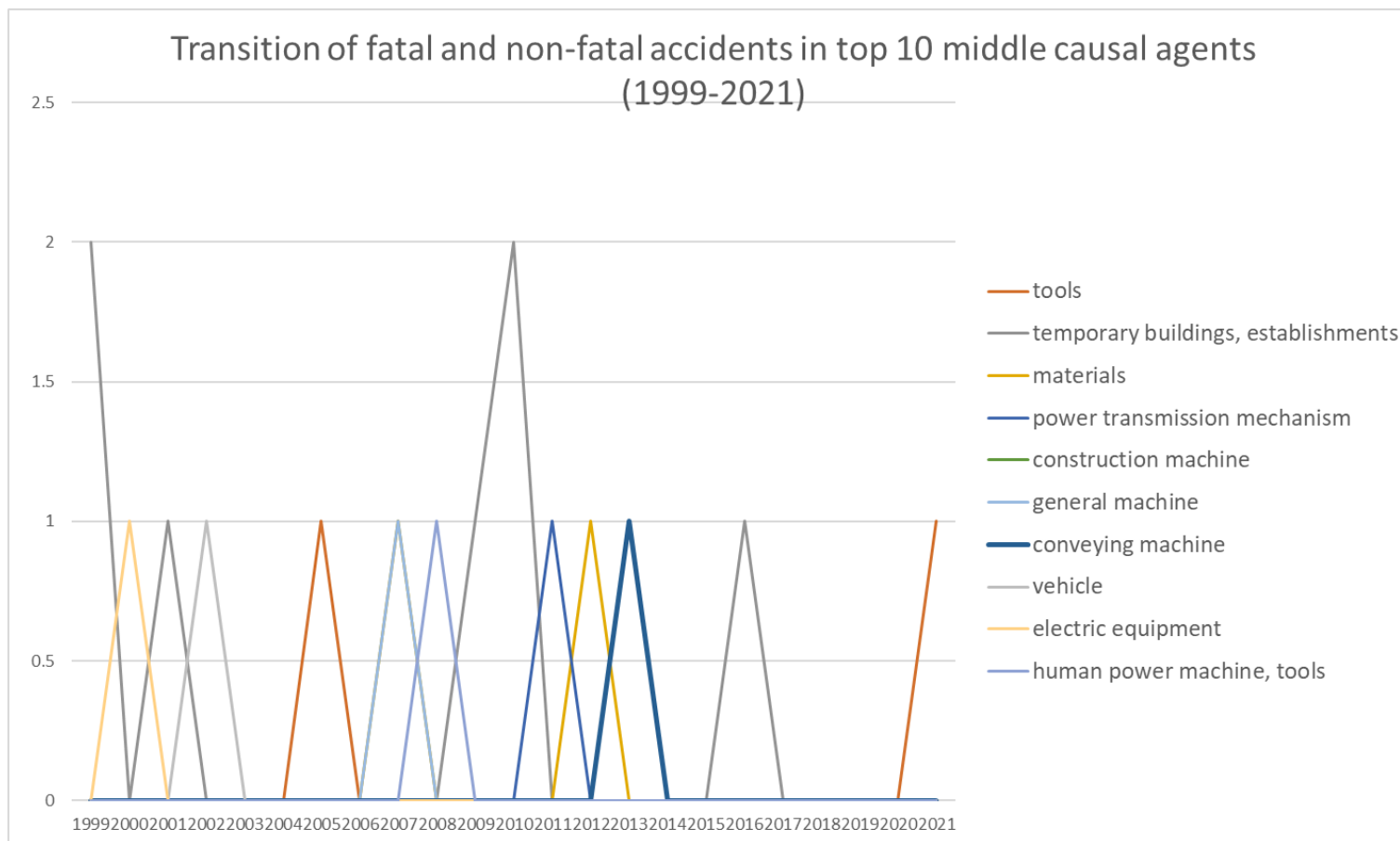


Transition of fatal and non-fatal accidents in each element like as causal agents, type of accidents, etc. in code no. 020302 petroleum mining (1999-2021)

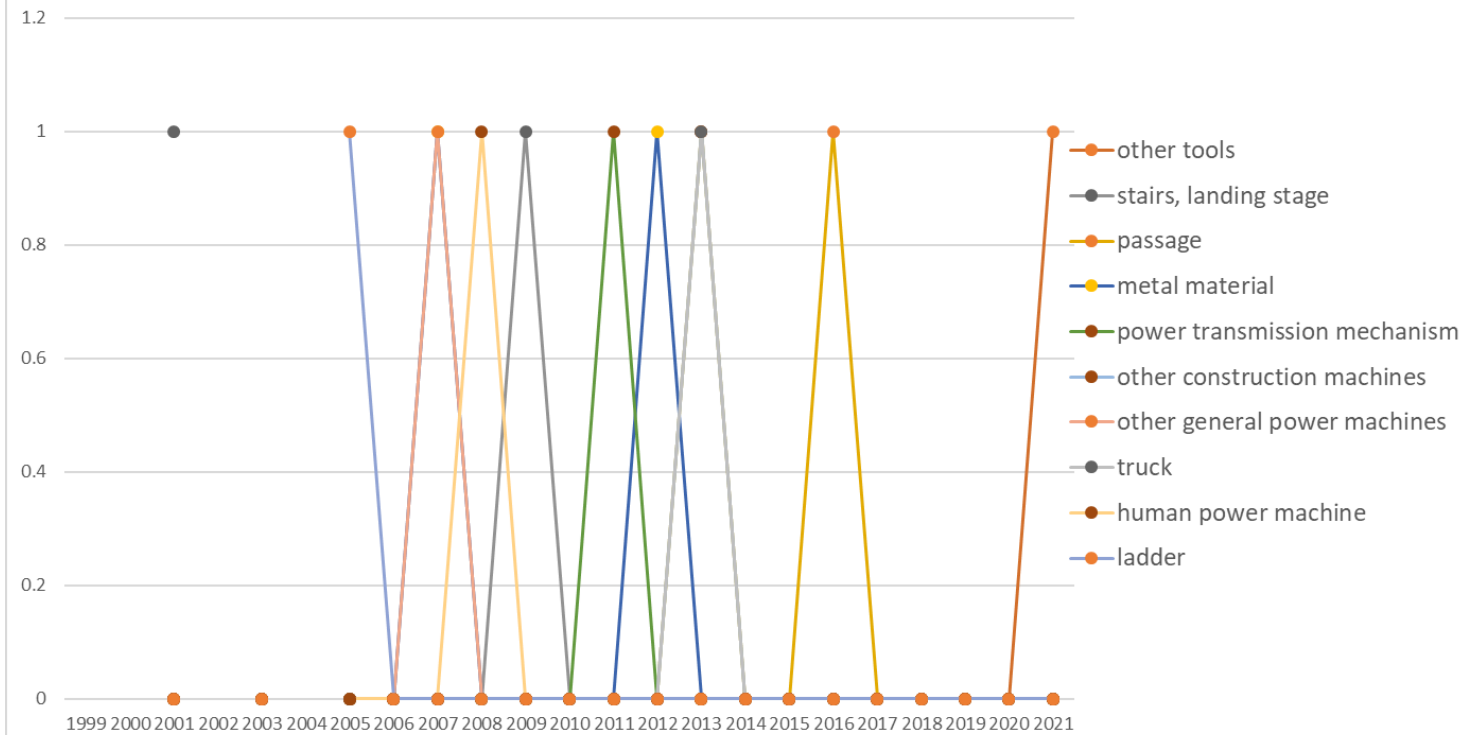


Transition of fatal and non-fatal accidents in large causal agents in code no. 020302 petroleum mining (1999-2021)

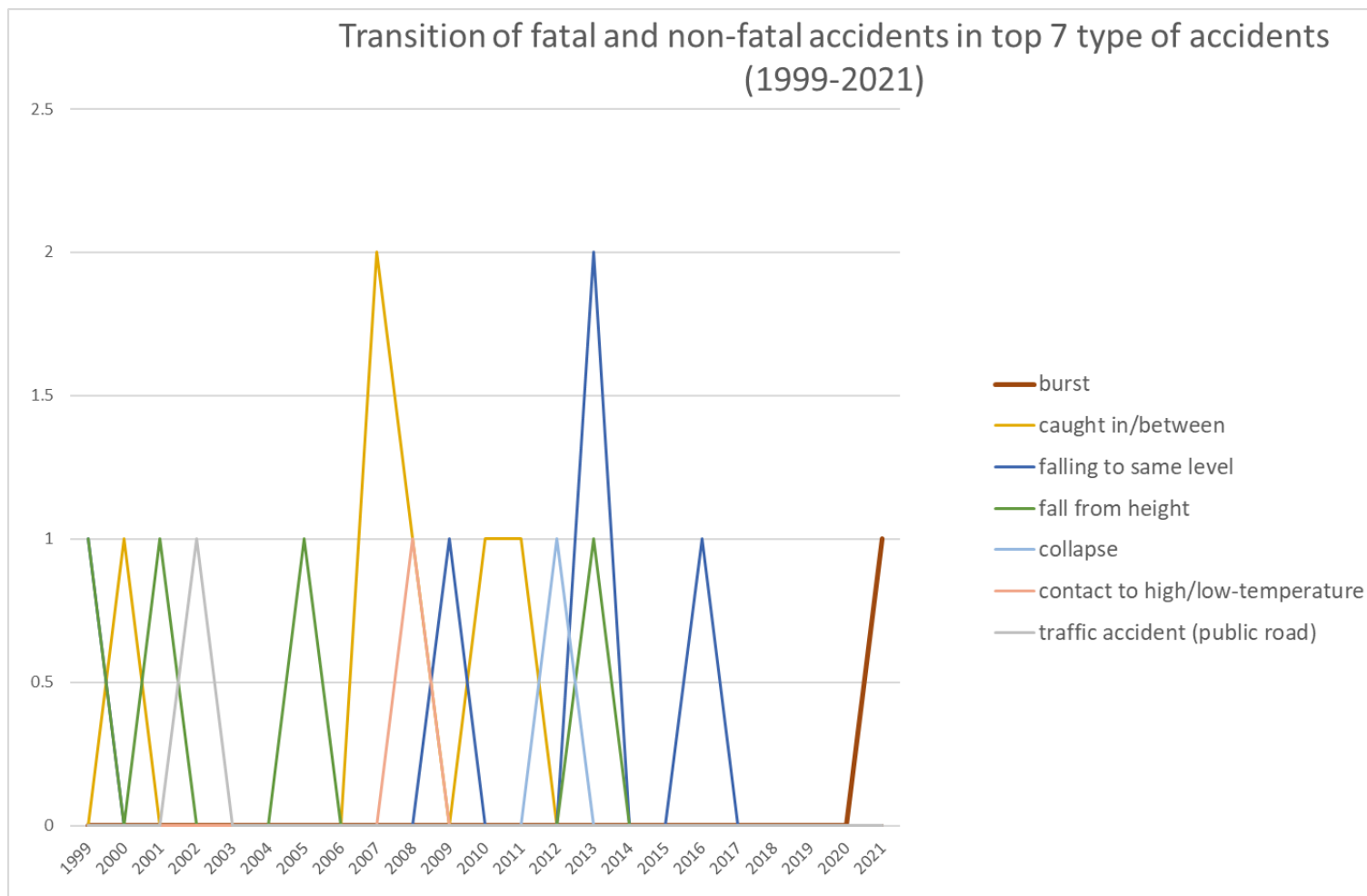


Transition of fatal and non-fatal accidents in middle causal agents in code no. 020302 petroleum mining (1999-2021)

Transition of fatal and non-fatal accidents in top 10 small causal agents
(1999-2021)

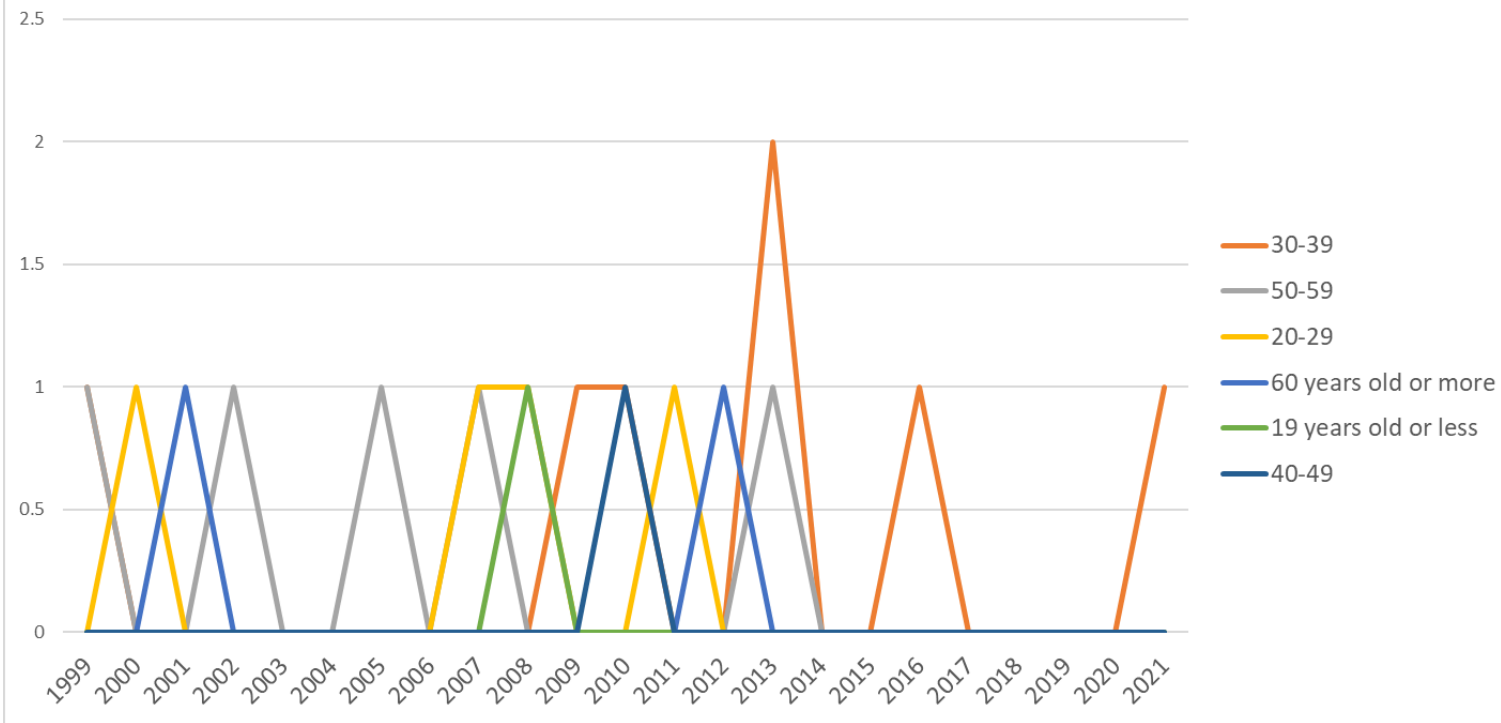


Transition of fatal and non-fatal accidents in small causal agents in code no. 020302 petroleum mining (1999-2021)



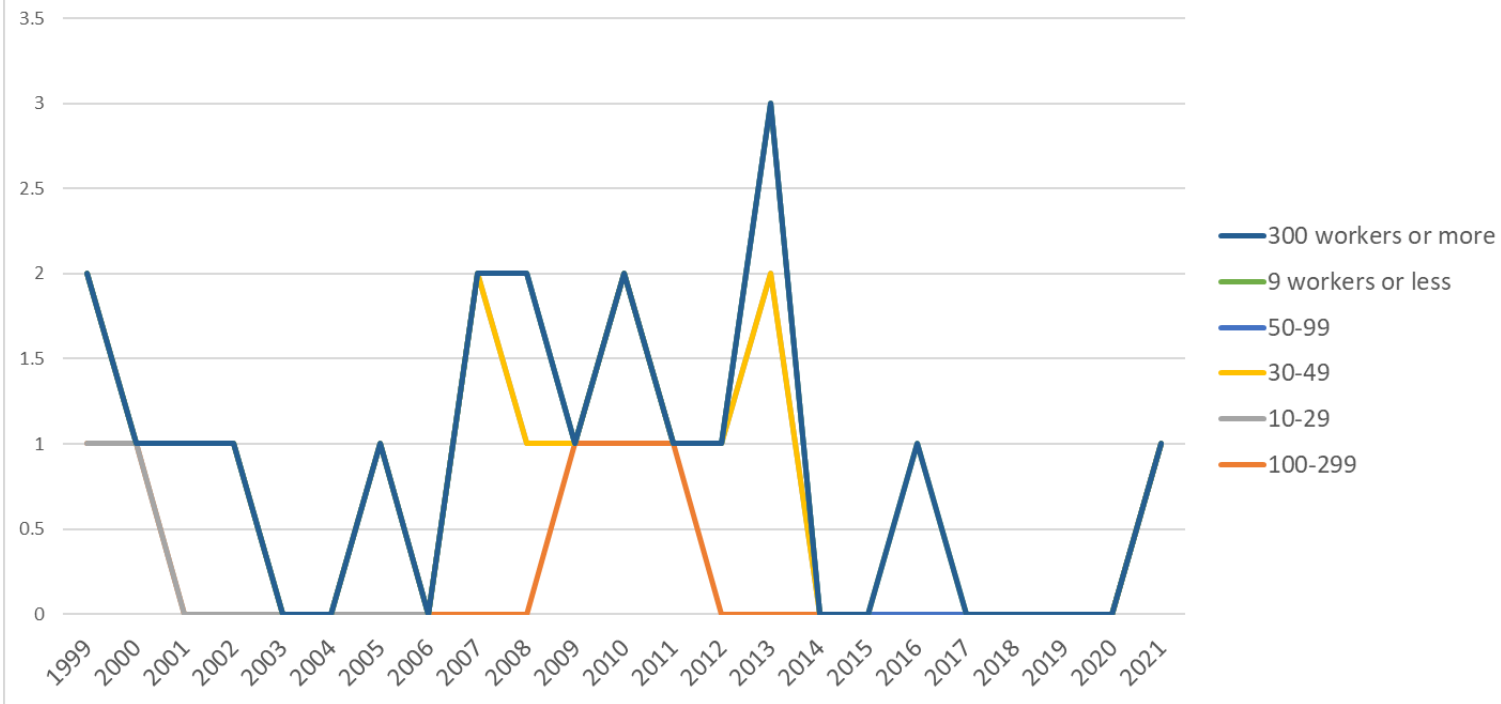
Transition of fatal and non-fatal accidents in type of accidents in code no. 020302 petroleum mining (1999-2021)

Transition of fatal and non-fatal accidents in workers ages (1999-2021)

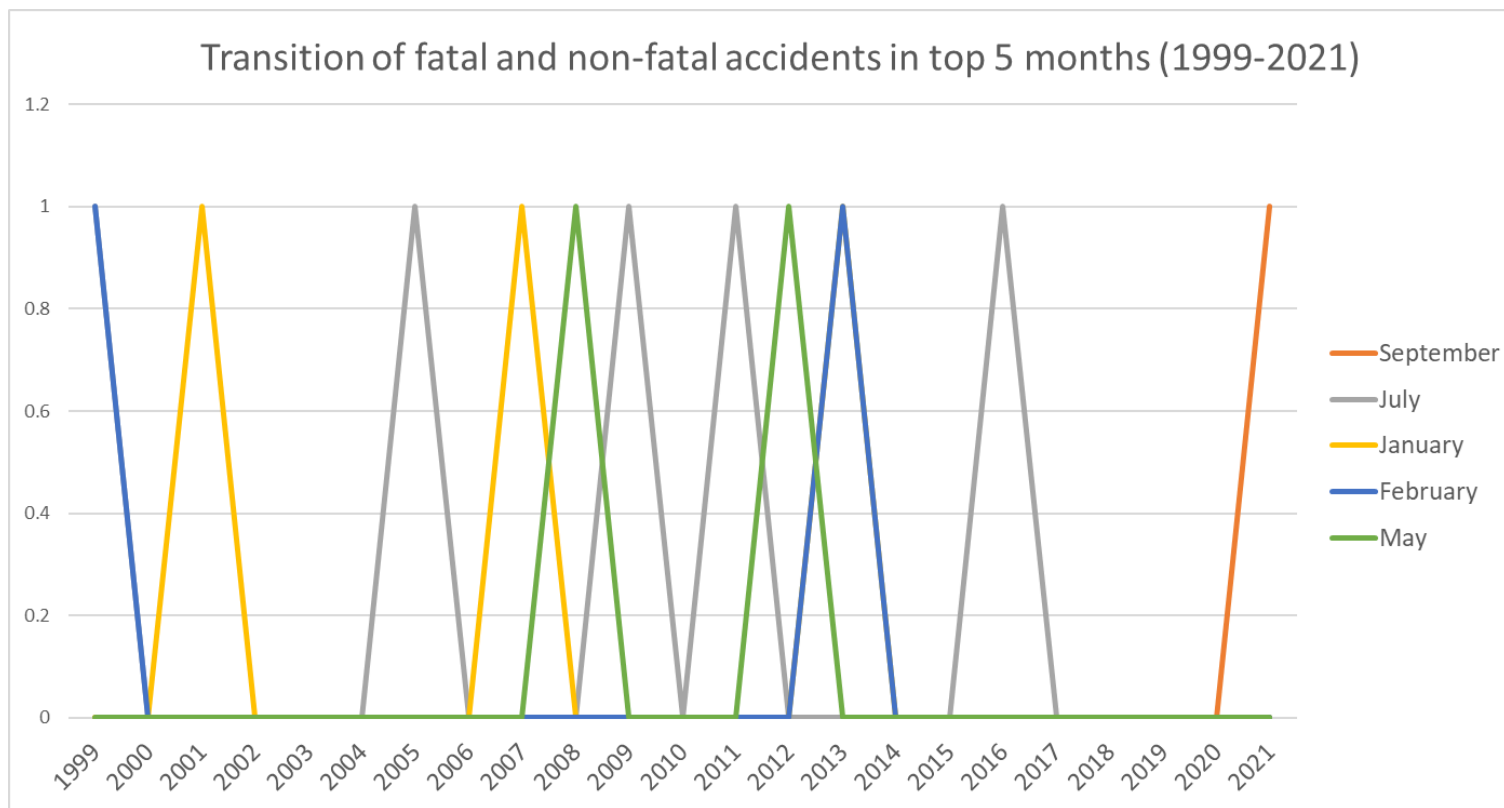


Transition of fatal and non-fatal accidents in workers ages in code no. 020302 petroleum mining (1999-2021)

Transition of fatal and non-fatal accidents in workers scales (1999-2021)

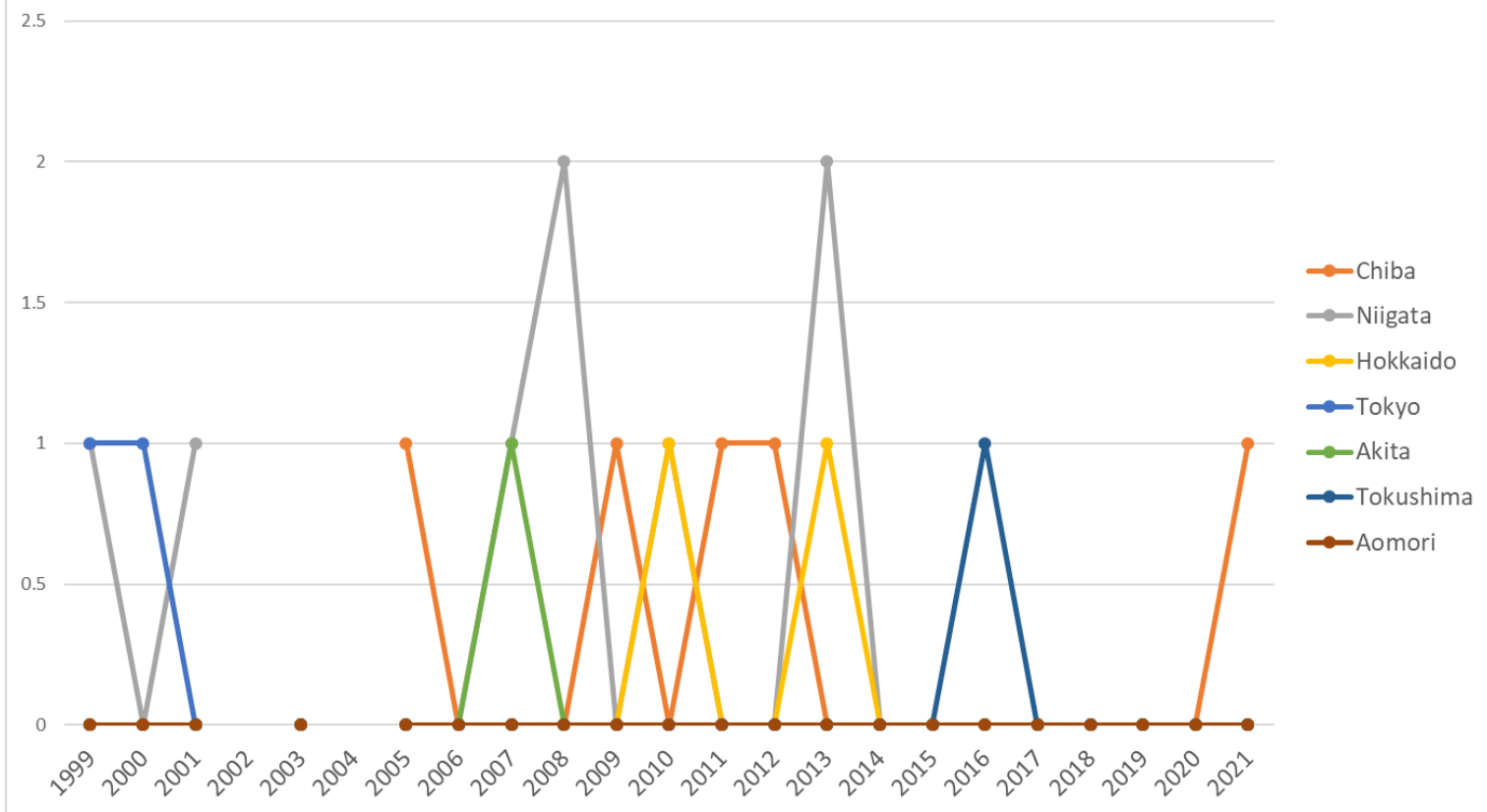


Transition of fatal and non-fatal accidents in workers scales in code no. 020302 petroleum mining (1999-2021)



Transition of fatal and non-fatal accidents in months in code no. 020302 petroleum mining (1999-2021)

Transition of fatal and non-fatal accidents in top 7 prefectures (1999-2021)



Transition of fatal and non-fatal accidents in prefectures in code no. 020302 petroleum mining (1999-2021)

Transition of fatal and non-fatal accidents in large causal agents in code no. 020302 petroleum mining (1999-2021)

code	Causal (L) agents	1999	2000	2001	2002	2003	2004	2005	2006	2007	2008	2009	2010	2011	2012	2013	2014	2015	2016	2017	2018	2019	2020	2021	total	Causal (L) agents
3	other equipment		1					1			1													1	4	other equipment
1	machine									1				1		1									3	machine
2	crane, conveying				1											1									2	crane, conveying

[illegible]

33	welding equipment																											welding equipment
34	kiln, caldron																											kiln, caldron
39	other equipments, facilities																											other equipments, facilities
61	load																											load
71	natural environment																											natural environment
91	other causal agent																											other causal agent
92	no causal agent																											no causal agent
99	unclassifiable																											unclassifiable
	total	2	1	1	1			1		2	2	1	2	1	1	3			1						1	20		total

Transition of fatal and non-fatal accidents in small causal agents in code no. 020302 petroleum mining (1999-2021)

[illegible]

[illegible]

[illegible]

[illegible]

[illegible]

[illegible]

712	standing tree																											standing tree
713	water																											water
714	abnormal environment																											abnormal environment
715	high/cold temperature environment																											high/cold temperature environment
719	other environments																											other environments
911	other causal agent																											other causal agent
921	no causal agent																											no causal agent
999	unclassifiable																											unclassifiable
	total			1				1		2	2	1	2	1	1	3			1						1	16		total

Transition of fatal and non-fatal accidents in type of accidents in code no. 020302 petroleum mining (1999-2021)

code	Type of accidents	1999	2000	2001	2002	2003	2004	2005	2006	2007	2008	2009	2010	2011	2012	2013	2014	2015	2016	2017	2018	2019	2020	2021	total	Type of accidents
15	burst																							1	1	burst
07	caught in/between		1							2	1		1	1											6	caught in/between
02	falling to same level	1										1				2			1						5	falling to same level
01	fall from height	1		1				1								1									4	fall from height
05	collapse														1										1	collapse
11	contact to high/low-temperature										1														1	contact to high/low-temperature

17	traffic accident (public road)				1																			1	traffic accident (public road)	
19	reaction to motion/improper motion											1												1	reaction to motion/improper motion	
03	crash																								crash	
04	struck by flying or falling object																								struck by flying or falling object	
06	crashed by																								crashed by	
08	cut																								cut	
09	injury to the sole of the foot																								injury to the sole of the foot	
10	drown																								drown	
12	contact to harmful substance																								contact to harmful substance	
13	electric shock																								electric shock	
14	explosion																								explosion	
16	fire																								fire	
18	traffic accident (others)																								traffic accident (others)	
90	others																								others	
99	unclassifiable																								unclassifiable	
	total	2	1	1	1			1		2	2	1	2	1	1	3			1					1	20	total

code	Age	1999	2000	2001	2002	2003	2004	2005	2006	2007	2008	2009	2010	2011	2012	2013	2014	2015	2016	2017	2018	2019	2020	2021	total	Age
3	30-39	1										1	1			2			1					1	7	30-39
5	50-59	1			1			1		1						1									5	50-59
2	20-29		1							1	1			1											4	20-29
6	60 years old or more			1											1										2	60 years old or more
1	19 years old or less										1														1	19 years old or less
4	40-49												1												1	40-49
	total	2	1	1	1			1		2	2	1	2	1	1	3			1					1	20	total

code	Workers scale	1999	2000	2001	2002	2003	2004	2005	2006	2007	2008	2009	2010	2011	2012	2013	2014	2015	2016	2017	2018	2019	2020	2021	total	Workers scale	
5	100-299	1	1									1	1	1										1	6	100-299	
2	10-29									2	1		1		1	2									7	10-29	
3	30-49	1		1	1			1																	4	30-49	
4	50-99										1					1									2	50-99	
1	9 workers or less																		1						1	9 workers or less	
6	300 workers or more																									300 workers or more	
	total	2	1	1	1			1		2	2	1	2	1	1	3			1						1	20	total

[illegible]

[illegible]

30	Wakayama																									Wakayama
31	Tottori																									Tottori
32	Shimane																									Shimane
33	Okayama																									Okayama
34	Hiroshima																									Hiroshima
35	Yamaguchi																									Yamaguchi
37	Kagawa																									Kagawa
38	Ehime																									Ehime
39	Kochi																									Kochi
40	Fukuoka																									Fukuoka
41	Saga																									Saga
42	Nagasaki																									Nagasaki
43	Kumamoto																									Kumamoto
44	Oita																									Oita
45	Miyazaki																									Miyazaki
46	Kagoshima																									Kagoshima
47	Okinawa																									Okinawa
	total	2	1	1				1		2	2	1	2	1	1	3			1					1	19	total

Data source : <https://anzeninfo.mhlw.go.jp/user/anzen/tok/anst00.htm>

Return to https://www.ijsa.or.jp/english/statistics/202211_23.html