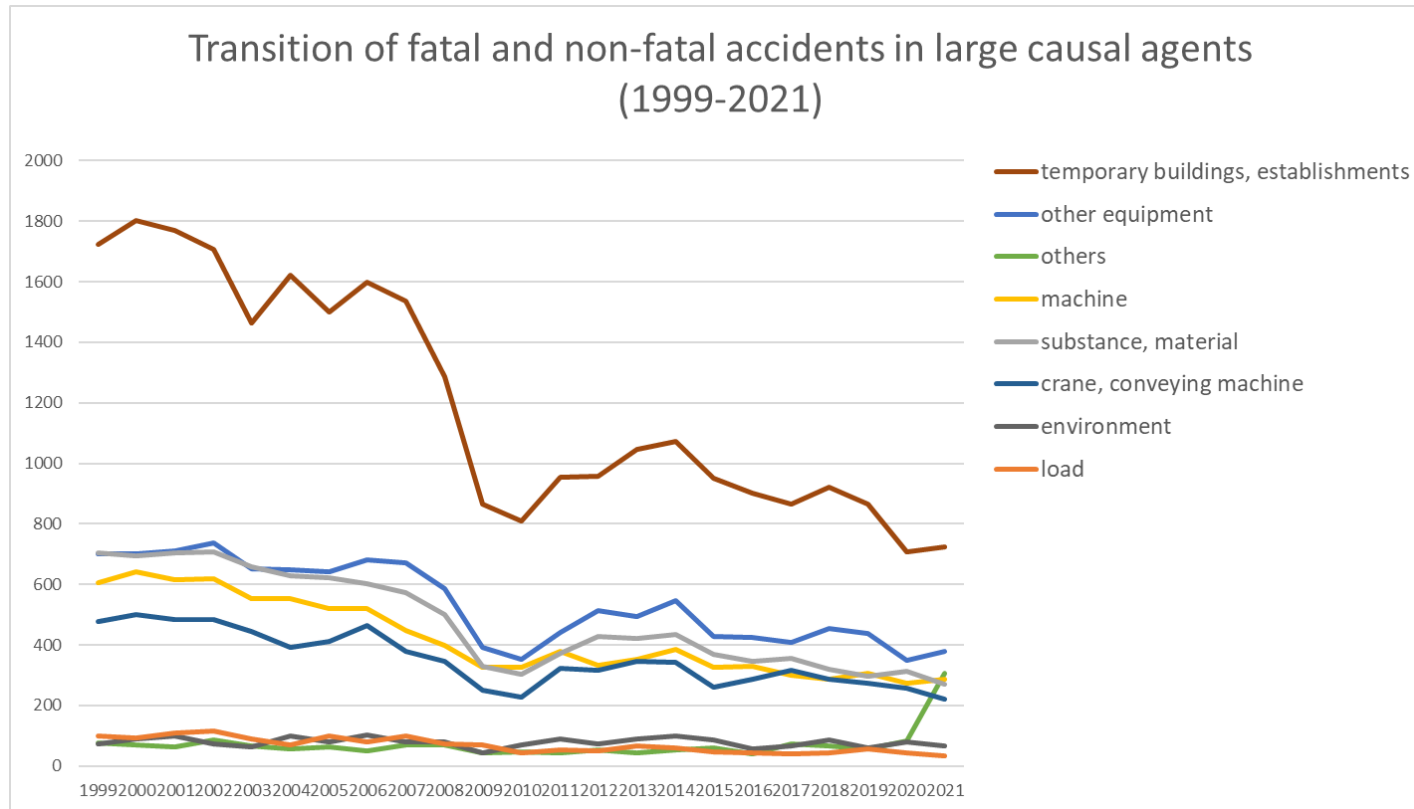
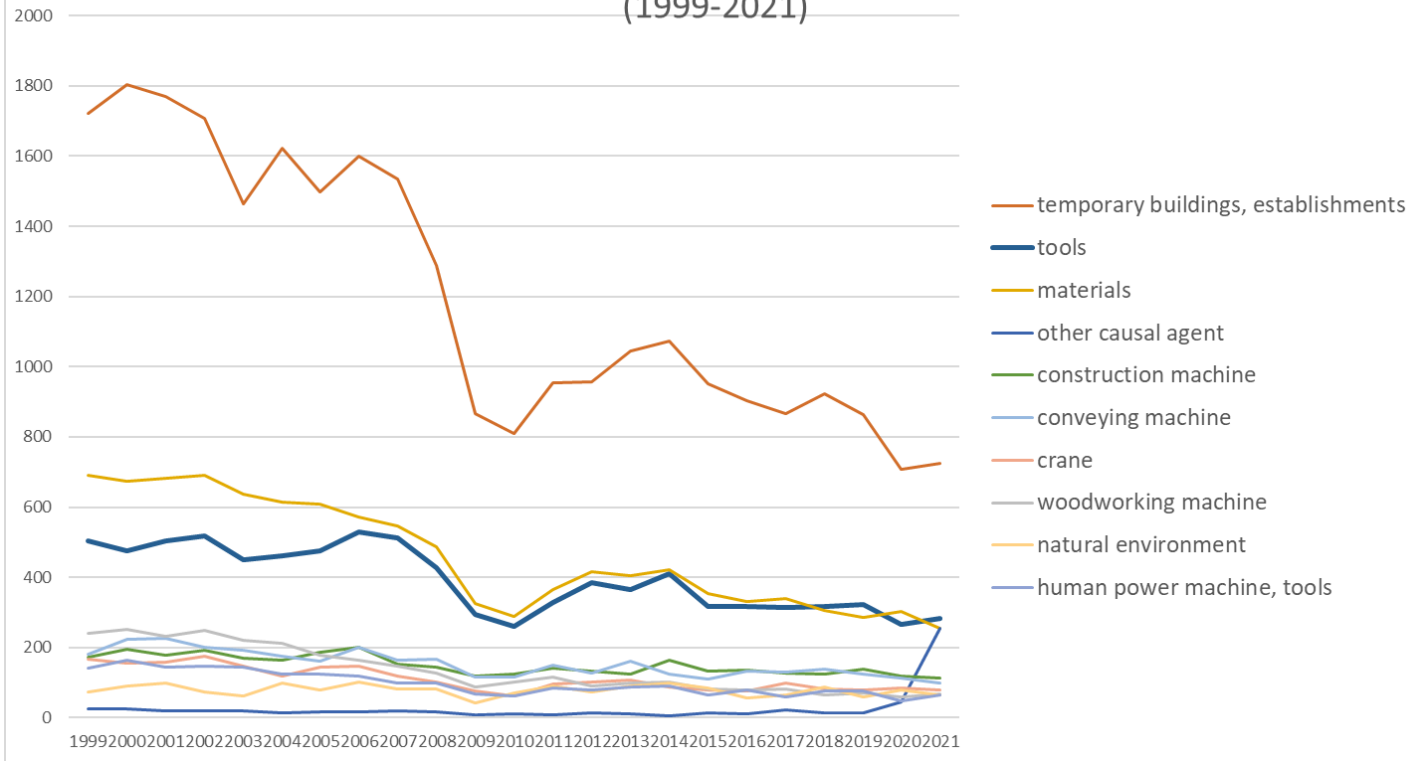


Transition of fatal and non-fatal accidents in each element like as causal agents, type of accidents, etc. in code no. 030201 steel frame/reinforced concrete house construction work (1999-2021)



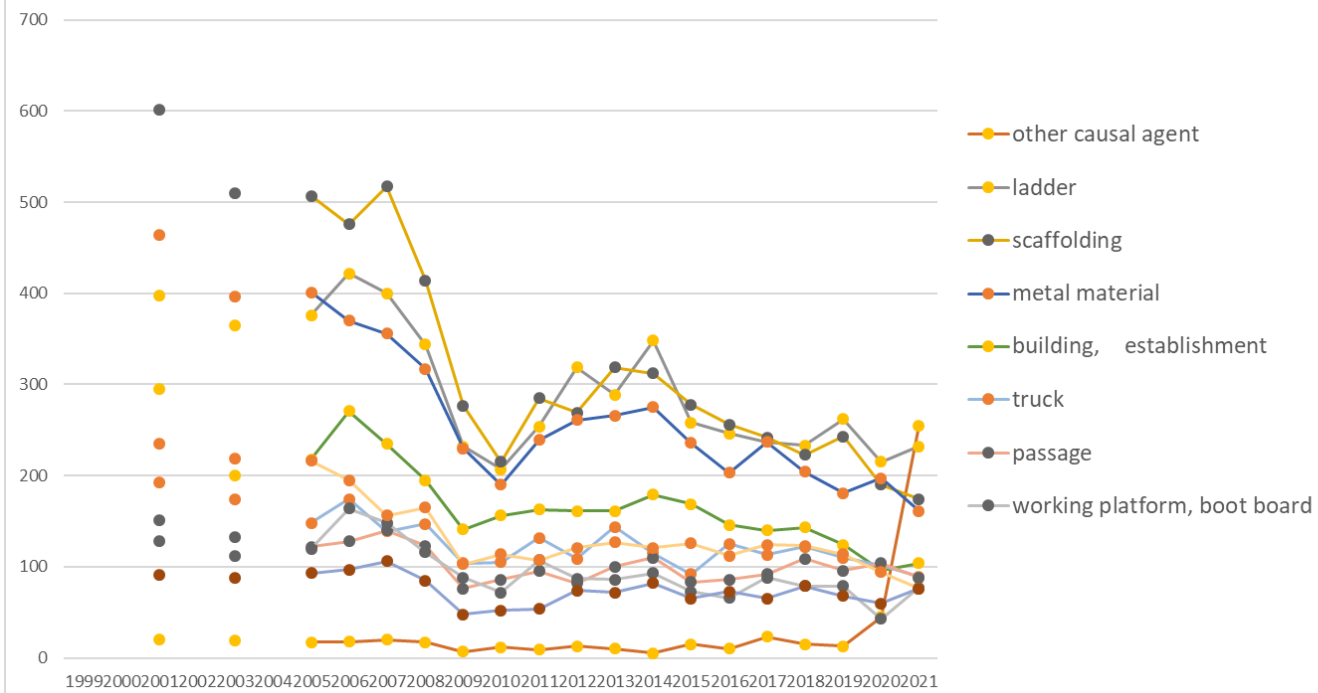
Transition of fatal and non-fatal accidents in large causal agents in code no. 030201 steel frame/reinforced concrete house construction work (1999-2021)

Transition of fatal and non-fatal accidents in top 10 middle causal agents (1999-2021)



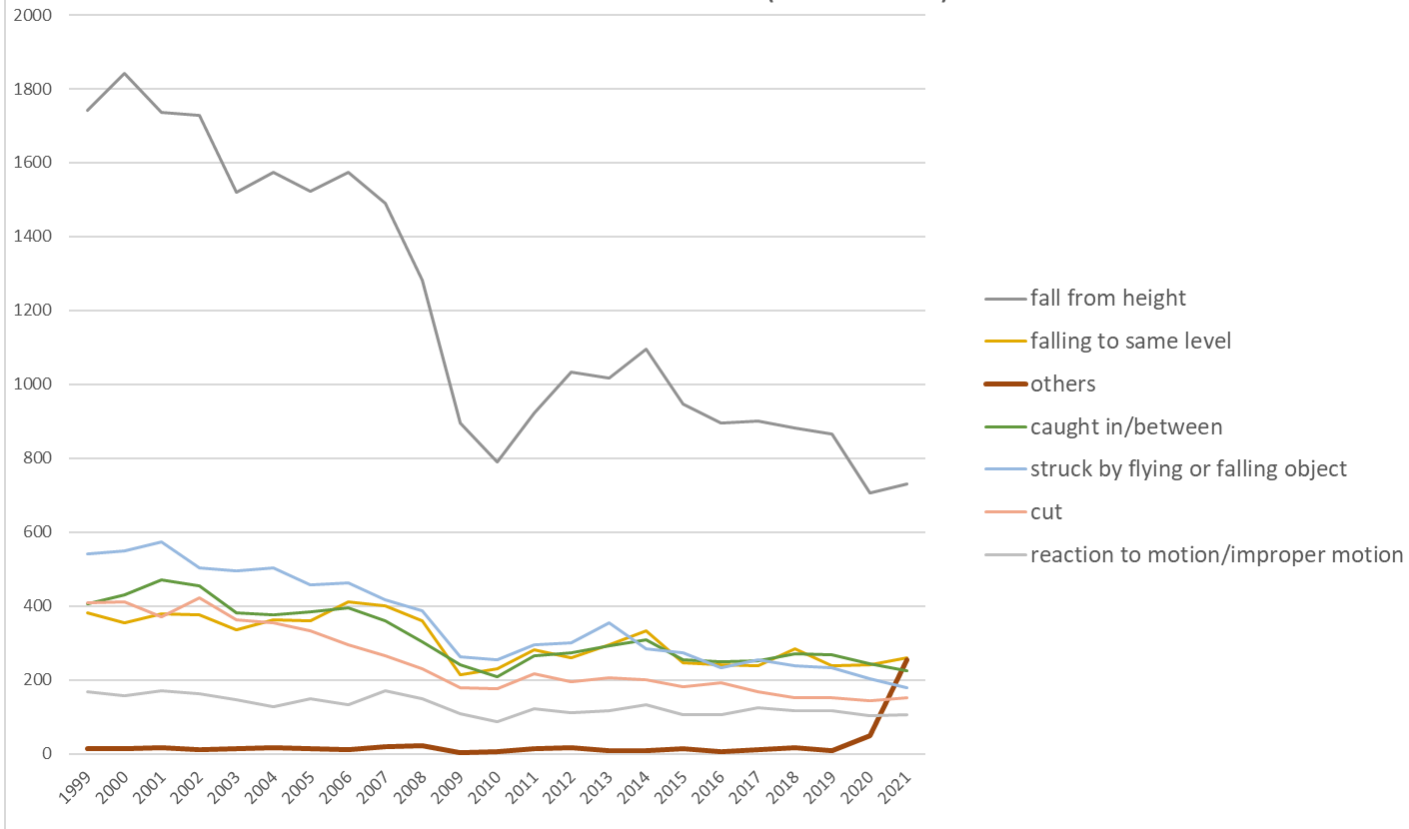
Transition of fatal and non-fatal accidents in middle causal agents in code no. 030201 steel frame/reinforced concrete house construction work (1999-2021)

Transition of fatal and non-fatal accidents in top 10 small causal agents (1999-2021)



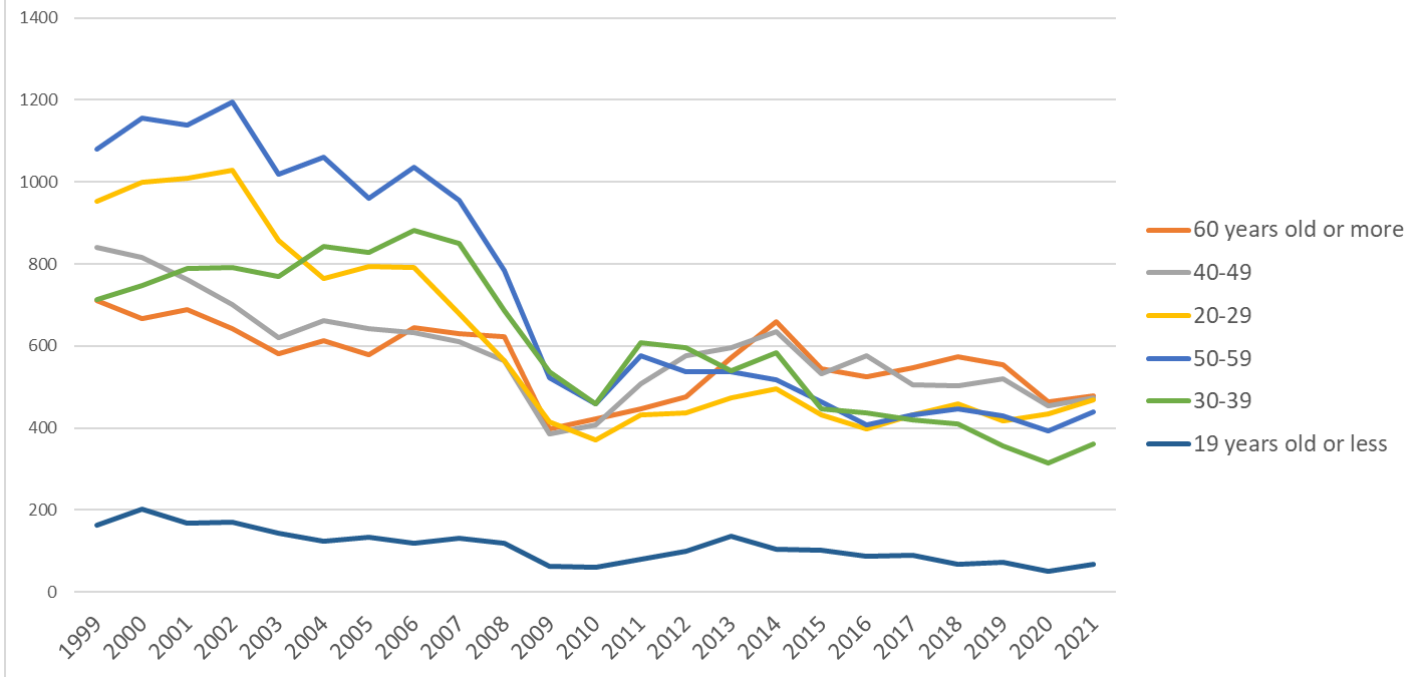
Transition of fatal and non-fatal accidents in small causal agents in code no. 030201 steel frame/reinforced concrete house construction work (1999-2021)

Transition of fatal and non-fatal accidents in top 7 type of accidents
(1999-2021)



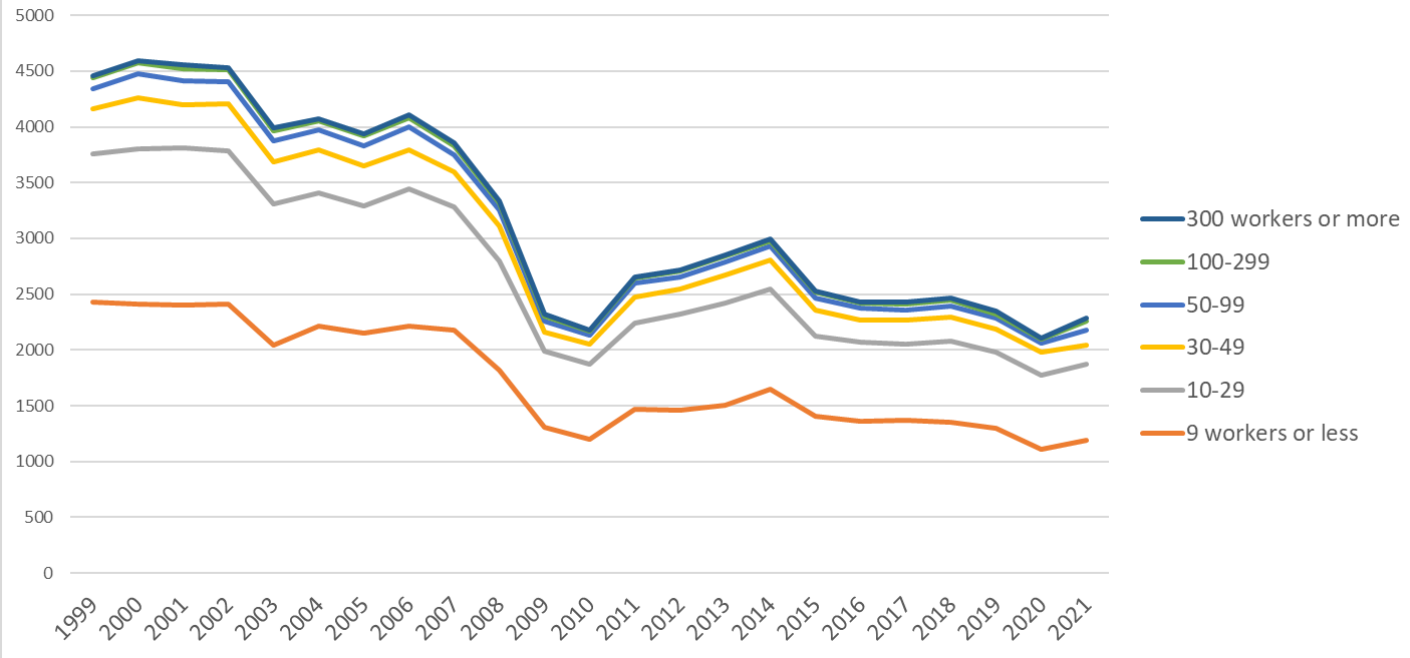
Transition of fatal and non-fatal accidents in type of accidents in code no. 030201 steel frame/reinforced concrete house construction work (1999-2021)

Transition of fatal and non-fatal accidents in workers ages (1999-2021)



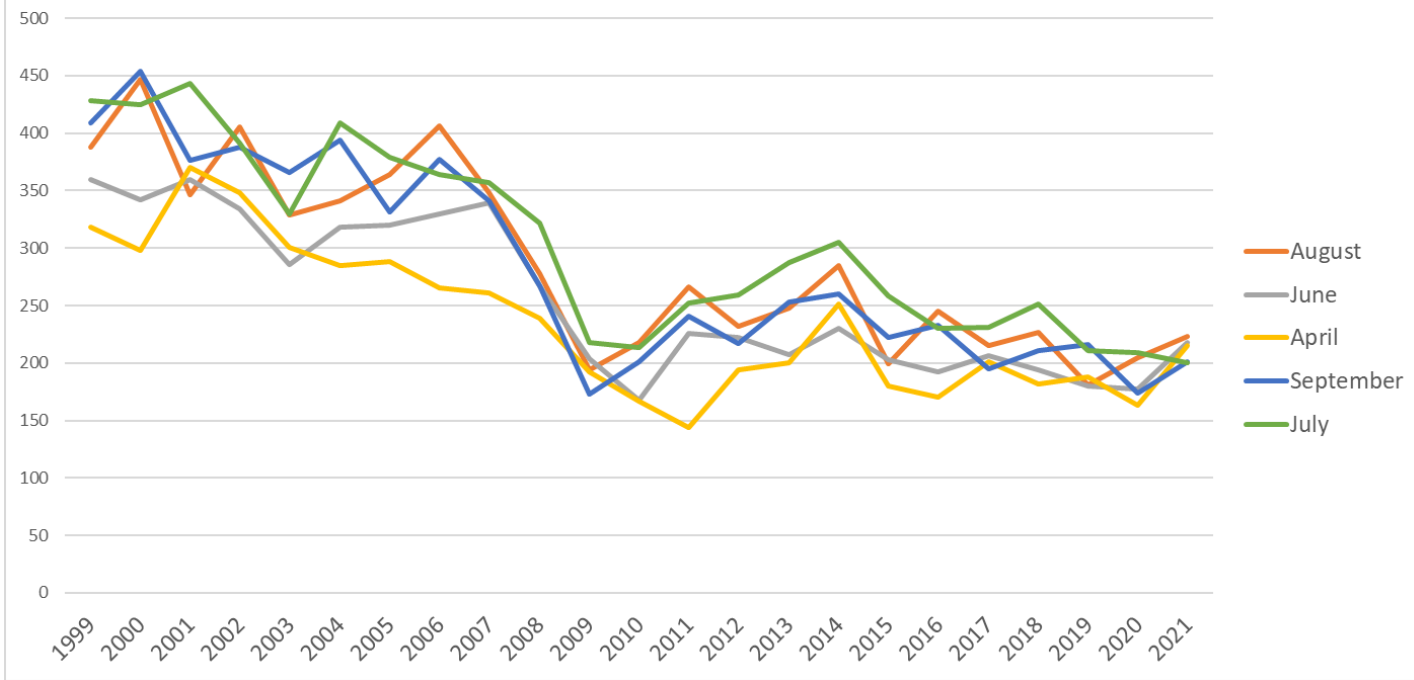
Transition of fatal and non-fatal accidents in workers ages in code no. 030201 steel frame/reinforced concrete house construction work (1999-2021)

Transition of fatal and non-fatal accidents in workers scales (1999-2021)

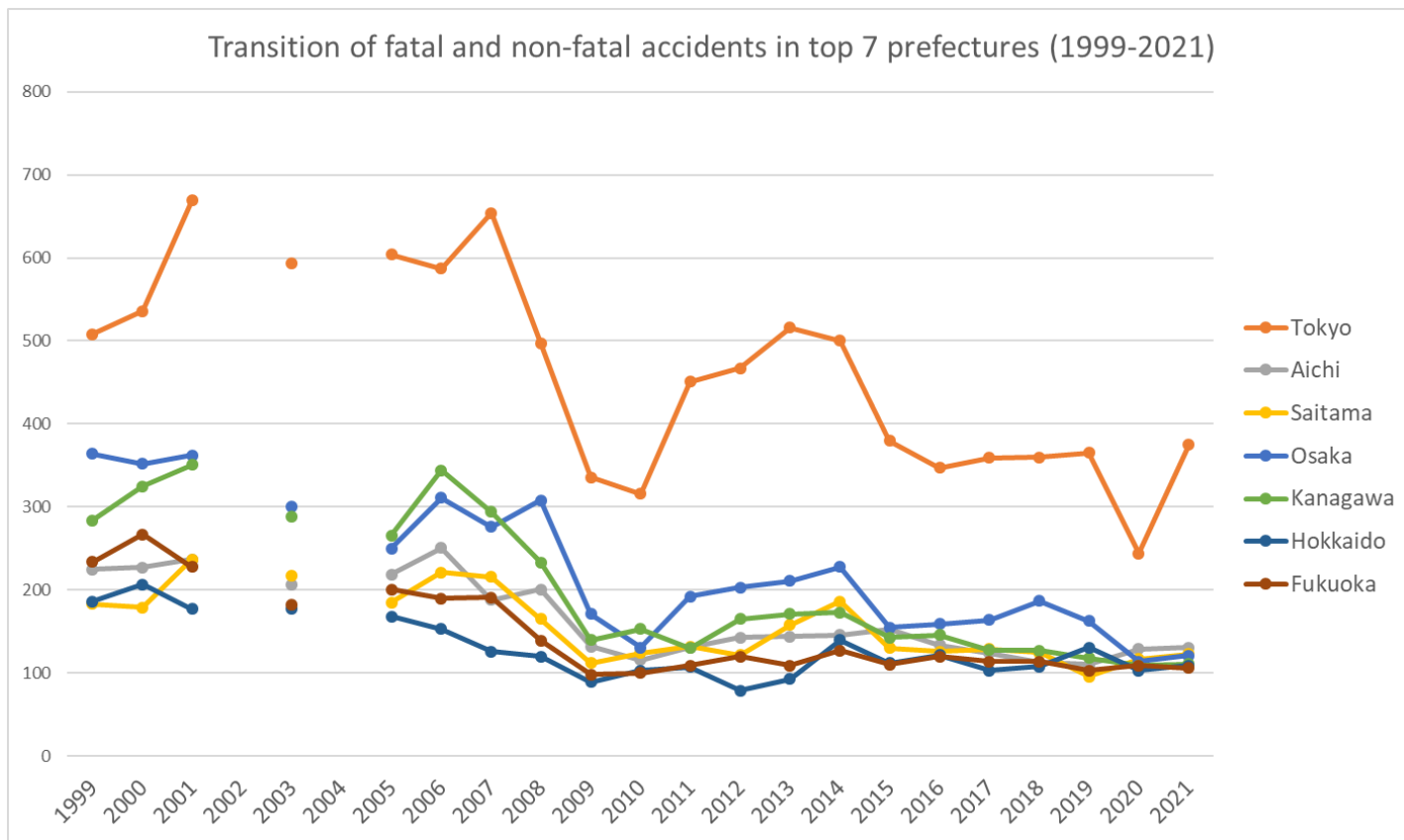


Transition of fatal and non-fatal accidents in workers scales in code no. 030201 steel frame/reinforced concrete house construction work (1999-2021)

Transition of fatal and non-fatal accidents in top 5 months (1999-2021)



Transition of fatal and non-fatal accidents in months in code no. 030201 steel frame/reinforced concrete house construction work (1999-2021)



Transition of fatal and non-fatal accidents in prefectures in code no. 030201 steel frame/reinforced concrete house construction work (1999-2021)

Transition of fatal and non-fatal accidents in large causal agents in code no. 030201 steel frame/reinforced concrete house construction work (1999-2021)

code	Causal (L) agents	1999	2000	2001	2002	2003	2004	2005	2006	2007	2008	2009	2010	2011	2012	2013	2014	2015	2016	2017	2018	2019	2020	2021	total	Causal (L) agents
4	temporary buildings, establishments	1,723	1,803	1,770	1,708	1,465	1,622	1,499	1,599	1,535	1,287	867	809	953	956	1,046	1,074	951	902	867	923	864	709	724	27,656	temporary buildings, establishments
3	other equipment	702	700	711	736	652	647	643	683	672	585	393	353	442	514	493	545	427	424	410	454	437	350	379	12,352	other equipment
9	others	77	69	63	85	66	57	63	51	70	70	43	47	43	53	43	53	59	40	72	65	56	84	306	1,635	others
1	machine	607	642	616	619	554	553	520	520	448	397	325	325	380	333	351	387	326	330	301	286	307	273	286	9,686	machine

5	substance, material	704	696	706	709	658	629	621	603	574	501	331	304	372	428	420	434	370	345	357	319	297	313	272	10,963	substance, material
2	crane, conveying machine	476	501	484	484	443	393	412	466	380	345	251	229	322	315	345	343	261	288	316	287	274	258	221	8,094	crane, conveying machine
7	environment	73	90	98	74	62	98	79	103	81	81	43	70	90	72	90	99	86	57	65	87	60	80	65	1,803	environment
6	load	100	92	108	116	90	70	100	81	98	72	69	42	52	49	66	61	46	45	39	42	56	43	35	1,572	load
	total	4,462	4,593	4,556	4,531	3,990	4,069	3,937	4,106	3,858	3,338	2,322	2,179	2,654	2,720	2,854	2,996	2,526	2,431	2,427	2,463	2,351	2,110	2,288	73,761	total

Transition of fatal and non-fatal accidents in middle causal agents in code no. 030201 steel frame/reinforced concrete house construction work (1999-2021)

code	Causal (M) agents	1999	2000	2001	2002	2003	2004	2005	2006	2007	2008	2009	2010	2011	2012	2013	2014	2015	2016	2017	2018	2019	2020	2021	total	Causal (M) agents
41	temporary buildings, establishments	1,723	1,803	1,770	1,708	1,465	1,622	1,499	1,599	1,535	1,287	867	809	953	956	1,046	1,074	951	902	867	923	864	709	724	27,656	temporary buildings, establishments
37	tools	505	476	504	519	451	462	475	529	511	428	293	259	328	386	366	410	318	316	314	318	323	267	283	9,041	tools
52	materials	690	673	683	692	636	615	609	573	547	486	325	289	364	416	405	421	354	331	339	306	287	302	255	10,598	materials
91	other causal agent	24	25	20	19	19	13	17	18	20	17	7	12	9	13	10	5	15	10	23	15	13	45	255	624	other causal agent
14	construction machine	172	194	178	193	170	164	186	200	153	145	120	123	141	133	123	163	133	135	126	124	138	118	112	3,444	construction machine
22	conveying machine	182	224	225	201	192	175	160	200	165	167	116	116	150	127	162	125	109	132	131	138	125	112	99	3,533	conveying machine
21	crane	168	155	158	175	146	118	145	148	120	103	75	63	96	103	106	88	79	76	98	83	80	85	78	2,546	crane
13	woodworking machine	241	253	233	248	222	213	177	164	146	127	87	102	116	90	99	101	82	79	81	66	71	59	68	3,125	woodworking machine

71	natural environment	73	90	98	74	62	98	79	103	81	81	43	70	90	72	90	99	86	57	65	87	60	80	65	1,803	natural environment
36	human power machine, tools	140	163	145	148	143	124	124	120	100	99	68	62	85	79	88	89	64	78	60	76	76	49	64	2,244	human power machine, tools
15	metal manufacturing machine	131	127	122	121	109	111	110	94	89	76	78	63	85	80	83	75	59	69	60	54	59	55	59	1,969	metal manufacturing machine
92	no causal agent	47	36	33	62	44	41	41	27	42	44	35	31	34	37	30	43	42	29	48	49	41	39	48	923	no causal agent
23	vehicle	126	122	101	108	105	100	107	118	95	75	60	50	76	85	77	130	73	80	87	66	69	61	44	2,015	vehicle
16	general machine	61	68	80	54	50	62	47	60	56	47	39	35	38	29	45	46	48	45	30	40	38	38	42	1,098	general machine
61	load	100	92	108	116	90	70	100	81	98	72	69	42	52	49	66	61	46	45	39	42	56	43	35	1,572	load
39	other equipments, facilities	30	35	31	39	32	39	21	22	29	39	19	18	16	28	25	25	25	18	19	29	26	22	22	609	other equipments, facilities
51	hazards, harmful substances	14	23	23	17	22	14	12	30	27	15	6	15	8	12	15	13	16	14	18	13	10	11	17	365	hazards, harmful substances
35	electric equipment	8	13	11	9	13	8	13	9	12	7	6	9	6	10	3	9	8	5	10	8	8	8	6	199	electric equipment
33	welding equipment	12	6	18	16	10	8	7	2	15	7	4	4	4	5	9	9	10	5	6	21	4	1	3	186	welding equipment
99	unclassifiable	6	8	10	4	3	3	5	6	8	9	1	4		3	3	5	2	1	1	1	2		3	88	unclassifiable
11	engine			1	1	3	1			1	1		1			1	1			3			1	3	18	engine
12	power transmission	2		2	2		2		2	3	1	1	1		1		1	3	1	1	2	1	2	2	30	power transmission

364	hand tool			113		117		96	92	67	67	51	49	59	58	61	60	46	62	50	55	55	38	57	1,253	hand tool
414	opening			101		69		87	89	83	71	51	41	48	64	60	59	51	60	41	60	54	53	51	1,193	opening
419	other temporary buildings, establishments			92		81		84	84	67	70	51	33	47	58	75	77	71	63	57	78	63	52	48	1,251	other temporary buildings, establishments
921	no causal agent			33		44		41	27	42	44	35	31	34	37	30	43	42	29	48	49	41	39	48	737	no causal agent
212	mobile crane			85		80		89	79	65	51	45	40	48	55	62	53	46	42	54	53	50	54	45	1,096	mobile crane
131	circular sawing machine			169		169		131	126	125	98	62	69	83	60	77	78	58	59	60	48	54	41	44	1,611	circular sawing machine
231	cars, bus, motorcycle			99		104		106	116	91	72	57	48	74	84	77	130	73	80	85	66	68	61	44	1,535	cars, bus, motorcycle
142	excavating machine			58		60		51	61	49	44	35	35	49	36	36	56	46	51	34	51	43	52	41	888	excavating machine
522	lumber, bamboo			102		119		99	94	91	72	41	42	55	80	66	61	50	57	52	43	55	44	38	1,261	lumber, bamboo
169	other general power machines			68		43		41	56	50	36	36	28	35	24	34	41	42	44	25	33	29	32	37	734	other general power machines
529	other materials			72		80		73	78	74	70	38	42	48	56	60	64	52	51	37	42	35	50	36	1,058	other materials
379	other tools			64		52		47	64	71	46	41	30	51	39	51	42	40	43	50	49	42	32	31	885	other tools
611	load			92		72		85	68	86	62	65	35	44	42	55	54	40	36	31	38	53	37	30	1,025	load
412	timbering			75		53		52	95	83	48	32	40	47	40	46	41	35	40	18	29	23	17	30	844	timbering
153	grinding machine, buffing machine			46		63		48	38	40	41	35	30	41	34	36	35	36	32	29	33	29	23	27	696	grinding machine, buffing machine
159	other metal manufacturing machines			68		39		46	44	45	32	33	28	39	40	45	35	21	31	25	18	24	25	27	665	other metal manufacturing machines
711	natural ground, rock			37		22		31	46	29	34	17	19	24	18	22	25	26	18	15	21	19	16	27	466	natural ground, rock

391	other equipment, facilities			31		32		21	22	29	39	19	18	16	28	25	25	25	18	19	29	26	22	22	466	other equipment, facilities
372	slinging tool			42		34		52	43	40	38	20	22	23	28	26	20	20	27	27	36	19	20	20	557	slinging tool
211	crane			44		38		32	42	40	30	18	15	30	29	24	24	17	20	28	21	20	24	20	516	crane
523	stone, sand, substance			45		40		36	31	26	27	16	15	22	19	13	21	16	20	13	17	16	11	20	424	stone, sand, substance
715	high/cold temperature environment			30		23		22	30	33	28	13	36	32	32	36	46	31	25	33	50	23	46	19	588	high/cold temperature environment
149	other construction machines			40		34		41	38	35	29	18	28	32	30	31	27	19	23	15	21	19	19	19	518	other construction machines
719	other environments			26		10		19	21	15	14	8	8	18	16	23	24	22	12	15	12	13	16	17	309	other environments
139	other woodworking machines			33		28		30	24	14	22	14	21	20	17	19	11	17	14	14	10	13	11	15	347	other woodworking machines
146	vehicle for high lift work			13		13		32	25	26	24	13	12	12	12	14	21	18	15	18	17	22	11	13	331	vehicle for high lift work
145	demolition machine			17		16		19	18	12	20	16	8	20	12	19	33	22	18	26	11	19	8	12	326	demolition machine
141	leveling, transporting or loading machine			9		22		14	20	9	6	18	18	6	15	10	12	10	8	13	9	11	9	12	231	leveling, transporting or loading machine
143	foundation work machine			32		20		27	29	15	16	15	18	18	22	10	11	15	18	17	14	18	16	10	341	foundation work machine
519	other hazards, harmful substances			7		7		4	3	7	6	2	2	2	4	2	9	3	5	3	6	3	7	9	91	other hazards, harmful substances
136	chain saw			7		8		2	3	1	1	2	5	5	4	1	3	4	2	5	1	2	2	8	66	chain saw
362	human power hauling equipment			19		20		16	20	25	28	14	10	17	16	22	28	14	13	7	17	18	5	6	315	human power hauling equipment

363	machine			5		1		8	5	5	1	1	2	2	2	4		2	2	1	2		2	1	46	machine
359	other electrical equipment			2		3		6	1	2	2	3	2	1		2	2	2	1		1	1	2	1	34	other electrical equipment
352	electric power facilities			4		1		3	3	3		2	3	1	2		1	3	1	2		1	1	1	32	electric power facilities
156	shearing machine			4		1		6	1	3	1		2	1		1		1	2	3	1	1	1	1	30	shearing machine
319	other pressure vessels			2		2		1		2	4	2		2	3	2			2	1			2	1	26	other pressure vessels
224	conveyor			5		2			4	2	1		1	1	2		1		1	1		1		1	23	conveyor
151	lathe			1				2	3			4			3		3		2		1	1	1	1	22	lathe
216	gondola			3		1		1	1	1	1	1	1	2	1	2				3				1	19	gondola
154	power press					1		4			1				1	1		1			3	3	1		17	power press
339	other welding equipment			2						2	1	1			1	1			1	1				1	11	other welding equipment
511	explosive substance			1					3															1	5	explosive substance
163	roll machine (except printingroll machine)			2							1													1	4	roll machine (except printingroll machine)
331	gas welding equipment			8		5		6	2	8	3	2	1	4	3	4	3	4	3	3	18	4	1		82	gas welding equipment
361	human power cranes			8		5		4	3	3	3	2	1	7	3	1	1	2	1	2	2	3	4		55	human power cranes
513	inflammable gas			5		2		2		2	3		6	2	1	2	1	3		1	2	3	1		36	inflammable gas
714	abnormal environment					5		1	1		1		2	3	4			2		1	1	1			22	abnormal environment
239	other vehicles			2		1			1	4	3	2	2	1	1					2		1			20	other vehicles

713	water					1			2		1	1	2	7			2	1			1	2			20	water
134	hollow chisel mortiser, wood borer			3		3		2	1	1	1			1			3					2			17	hollow chisel mortiser, wood borer
132	band sawing machine			2		2			1	1	1	1		1	1		4	1	1						16	band sawing machine
227	rough terrain hauler			3					1			1		1	1		1				2		1		11	rough terrain hauler
321	chemical facilities							1	1	3		1			2		1	1			1				11	chemical facilities
223	railway equipment									1				5		1						1			8	railway equipment
341	kiln, caldron					1		1			1		1				1				1		1		7	kiln, caldron
225	loader					1					1		1			1	1					1			6	loader
135	chamfering machine, router, woodworking milling machine							2					1	1									1		5	chamfering machine, router, woodworking milling machine
232	railway vehicle							1	1			1		1											4	railway vehicle
161	centrifugal machine					1																2			3	centrifugal machine
312	pressure vessel												1	1			1								3	pressure vessel
155	forging pressure hammer											1											1		2	forging pressure hammer
165	food manufacturing machine					1							1												2	food manufacturing machine
171	felling machine																1	1							2	felling machine
213	derrick crane												1												1	derrick crane
215	cargo lifting appliance					1																			1	cargo lifting appliance

16	fire	7	2	8	9	5	1		1	3	2	1	2		3	4	2	2	1		17	3	1		74	fire
15	burst	2	1		1	3	2	1	1	1	1	1	1	1	2	2	3	1		1		1	1		27	burst
18	traffic accident (others)	3	1	1	1	1		1	1	4	1	1					1							17	traffic accident (others)	
10	drown	1	1			1						1		5										9	drown	
	total	4,462	4,593	4,556	4,531	3,990	4,069	3,937	4,106	3,858	3,338	2,322	2,179	2,654	2,720	2,854	2,996	2,526	2,431	2,427	2,463	2,351	2,110	2,288	73,761	total

Transition of fatal and non-fatal accidents in workers ages in code no. 030201 steel frame/reinforced concrete house construction work (1999-2021)

code	Age	1999	2000	2001	2002	2003	2004	2005	2006	2007	2008	2009	2010	2011	2012	2013	2014	2015	2016	2017	2018	2019	2020	2021	total	Age
6	60 years old or more	712	668	689	643	582	613	579	645	631	622	398	423	447	476	572	659	545	526	548	573	555	464	478	13,048	60 years old or more
4	40-49	841	817	762	702	620	662	643	632	610	564	386	407	508	576	595	636	533	576	506	502	520	455	474	13,527	40-49
2	20-29	954	1,000	1,008	1,029	857	765	793	792	678	563	416	370	433	437	474	495	432	397	431	460	417	434	469	14,104	20-29
5	50-59	1,080	1,157	1,138	1,195	1,019	1,060	961	1,037	956	784	522	459	577	537	537	518	465	408	433	448	430	392	439	16,552	50-59
3	30-39	713	748	790	792	769	844	828	881	851	687	537	460	608	595	540	584	448	437	419	411	357	315	361	13,975	30-39
1	19 years old or less	162	203	169	170	143	125	133	119	132	118	63	60	81	99	136	104	103	87	90	69	72	50	67	2,555	19 years old or less
	total	4,462	4,593	4,556	4,531	3,990	4,069	3,937	4,106	3,858	3,338	2,322	2,179	2,654	2,720	2,854	2,996	2,526	2,431	2,427	2,463	2,351	2,110	2,288	73,761	total

Transition of fatal and non-fatal accidents in workers scales in code no. 030201 steel frame/reinforced concrete house construction work (1999-2021)

code	Workers scale	1999	2000	2001	2002	2003	2004	2005	2006	2007	2008	2009	2010	2011	2012	2013	2014	2015	2016	2017	2018	2019	2020	2021	total	Workers scale
1	9 workers or less	2,430	2,411	2,403	2,414	2,043	2,215	2,155	2,214	2,174	1,816	1,310	1,203	1,472	1,461	1,507	1,649	1,402	1,357	1,374	1,348	1,297	1,110	1,193	39,958	9 workers or less
2	10-29	1,332	1,388	1,407	1,374	1,266	1,194	1,137	1,227	1,109	977	678	670	768	857	912	894	725	711	676	728	682	666	677	22,055	10-29
3	30-49	399	463	392	420	377	381	355	349	314	323	173	175	236	224	254	261	227	201	217	216	208	201	172	6,538	30-49
4	50-99	178	210	213	198	190	180	185	210	154	141	98	81	123	111	119	132	110	107	90	104	95	84	134	3,247	50-99
5	100-299	102	99	109	103	92	80	85	84	79	62	43	38	42	52	46	41	51	43	58	50	42	37	80	1,518	100-299

6	300 workers or more	21	22	32	22	22	19	20	22	28	19	20	12	13	15	16	19	11	12	12	17	27	12	32	445	300 workers or more
	total	4,462	4,593	4,556	4,531	3,990	4,069	3,937	4,106	3,858	3,338	2,322	2,179	2,654	2,720	2,854	2,996	2,526	2,431	2,427	2,463	2,351	2,110	2,288	73,761	total

Transition of fatal and non-fatal accidents in months in code no. 030201 steel frame/reinforced concrete house construction work (1999-2021)

code	Month	1999	2000	2001	2002	2003	2004	2005	2006	2007	2008	2009	2010	2011	2012	2013	2014	2015	2016	2017	2018	2019	2020	2021	total	Month
8	August	388	447	346	405	329	341	364	406	348	278	194	218	266	232	248	285	199	245	215	227	181	205	223	6,590	August
6	June	360	342	360	334	286	318	320	330	339	267	204	168	226	222	207	230	203	192	206	194	180	177	218	5,883	June
4	April	318	298	370	348	301	285	288	265	261	239	192	167	144	194	200	251	180	170	201	182	188	163	215	5,420	April
9	September	409	454	376	388	366	394	331	377	341	267	173	201	241	217	253	260	222	233	195	211	216	174	201	6,500	September
7	July	428	425	443	391	330	409	379	364	357	322	218	213	252	259	287	305	258	230	231	251	211	209	200	6,972	July
10	October	407	467	405	441	363	388	322	398	323	300	180	196	265	237	236	242	249	222	210	232	215	158	196	6,652	October
11	November	400	407	389	400	287	388	356	366	352	276	169	189	246	239	269	246	210	187	212	233	192	175	182	6,370	November
3	March	365	370	420	418	354	313	323	351	319	295	216	175	202	243	252	241	213	199	212	200	190	192	182	6,245	March
5	May	320	326	359	342	321	288	288	292	286	238	166	152	165	201	214	236	162	170	175	171	207	151	179	5,409	May
2	February	375	370	410	342	365	343	343	331	314	315	215	158	189	217	242	248	217	197	182	198	209	181	164	6,125	February
12	December	359	367	343	381	351	313	325	319	288	270	170	191	256	217	237	214	190	200	209	182	176	167	164	5,889	December
1	January	333	320	335	341	337	289	298	307	330	271	225	151	202	242	209	238	223	186	179	182	186	158	164	5,706	January
	total	4,462	4,593	4,556	4,531	3,990	4,069	3,937	4,106	3,858	3,338	2,322	2,179	2,654	2,720	2,854	2,996	2,526	2,431	2,427	2,463	2,351	2,110	2,288	73,761	total

Transition of fatal and non-fatal accidents in prefectures in code no. 030201 steel frame/reinforced concrete house construction work (1999-2021)

code	Prefecture	1999	2000	2001	2002	2003	2004	2005	2006	2007	2008	2009	2010	2011	2012	2013	2014	2015	2016	2017	2018	2019	2020	2021	total	Prefecture
13	Tokyo	508	536	669		593		604	587	654	497	336	316	451	467	516	500	380	347	359	360	365	244	375	9,664	Tokyo
23	Aichi	225	227	237		207		219	251	188	201	132	116	131	143	144	146	153	134	124	113	110	129	131	3,461	Aichi
11	Saitama	183	179	237		217		185	221	216	165	112	124	132	122	158	186	130	126	129	125	96	117	123	3,283	Saitama

27	Osaka	364	352	362		300		250	311	276	308	171	131	192	203	211	228	155	159	164	187	163	114	121	4,722	Osaka
14	Kanagawa	284	325	351		288		266	344	294	233	140	153	130	165	171	173	143	146	128	127	118	109	111	4,199	Kanagawa
1	Hokkaido	186	207	177		178		168	153	126	120	89	103	107	79	93	140	112	122	103	108	131	103	109	2,714	Hokkaido
40	Fukuoka	234	267	228		182		201	190	191	139	98	100	109	120	109	127	110	120	114	114	103	109	106	3,071	Fukuoka
12	Chiba	134	216	252		202		150	174	191	135	92	104	110	107	111	131	117	63	68	88	67	85	90	2,687	Chiba
47	Okinawa	55	67	52		61		73	82	77	85	89	62	70	77	77	97	83	58	107	94	99	81	86	1,632	Okinawa
28	Hyogo	254	213	229		205		174	211	216	188	125	112	106	94	118	99	98	120	89	88	86	105	85	3,015	Hyogo
22	Shizuoka	140	130	115		95		134	135	122	110	68	51	82	65	100	94	67	72	84	82	72	68	67	1,953	Shizuoka
26	Kyoto	126	129	94		108		117	99	85	65	65	72	82	70	69	84	64	58	69	84	66	59	58	1,723	Kyoto
4	Miyagi	62	70	68		57		71	66	74	69	51	31	76	76	81	73	59	60	48	43	48	46	58	1,287	Miyagi
43	Kumamoto	59	83	55		41		47	41	57	45	20	23	36	39	44	28	39	34	64	49	46	28	48	926	Kumamoto
21	Gifu	112	106	92		50		66	50	51	42	37	34	40	28	29	42	29	30	30	31	25	33	43	1,000	Gifu
8	Ibaraki	78	68	74		63		77	65	73	69	43	57	65	55	35	33	35	35	45	36	36	39	42	1,123	Ibaraki
24	Mie	87	87	79		71		81	92	53	53	28	37	40	41	38	39	36	40	46	49	41	19	40	1,097	Mie
34	Hiroshima	105	104	107		62		99	62	87	68	39	50	44	51	52	33	43	50	32	43	44	55	35	1,265	Hiroshima
7	Fukushima	59	44	42		50		45	46	34	39	28	28	25	51	42	57	26	34	36	25	32	27	35	805	Fukushima
38	Ehime	48	57	58		41		26	44	33	29	20	18	18	30	12	16	35	26	28	22	28	29	31	649	Ehime
3	Iwate	37	27	28		29		18	32	29	21	10	14	28	38	38	28	25	29	27	22	22	27	30	559	Iwate
46	Kagoshima	62	61	61		49		43	36	36	43	33	14	21	34	48	59	39	36	39	42	40	29	29	854	Kagoshima
9	Tochigi	39	42	39		38		46	43	47	40	22	10	39	36	37	20	21	29	20	28	27	21	29	673	Tochigi
15	Niigata	56	66	52		49		58	62	63	38	50	38	43	36	35	36	37	15	27	34	32	27	27	881	Niigata
20	Nagano	60	53	57		42		38	48	41	25	22	15	25	22	26	39	38	25	23	31	25	29	27	711	Nagano
16	Toyama	72	39	32		28		26	25	30	22	23	15	24	34	20	26	22	19	12	15	18	17	26	545	Toyama
17	Ishikawa	28	42	25		24		21	23	11	21	25	24	31	18	25	33	18	26	23	21	21	16	25	501	Ishikawa
30	Wakayama	49	58	52		43		34	31	30	25	23	14	13	22	18	21	16	20	21	15	20	12	24	561	Wakayama

33	Okayama	58	48	50		53		48	55	29	26	20	25	30	34	38	49	31	26	41	40	36	27	21	785	Okayama
10	Gunma	33	49	43		46		46	34	38	30	20	24	31	16	33	40	41	37	32	37	45	37	20	732	Gunma
29	Nara	45	48	41		37		33	29	21	31	31	11	18	28	26	28	18	30	27	22	12	25	20	581	Nara
6	Yamagata	41	42	40		30		26	39	20	18	6	24	16	20	25	18	13	22	19	28	11	19	19	496	Yamagata
2	Aomori	43	54	48		35		31	25	28	29	29	18	21	22	31	39	30	35	28	20	36	24	18	644	Aomori
5	Akita	24	26	22		29		19	23	33	27	15	18	23	17	21	24	24	22	21	21	26	16	18	469	Akita
36	Tokushima	65	36	39		40		23	24	23	20	12	21	22	33	25	23	17	17	21	17	17	12	17	524	Tokushima
19	Yamanashi	19	26	15		16		18	14	11	8	6	9	11	6	5	8	11	11	6	10	14	15	17	256	Yamanashi
25	Shiga	51	42	49		56		49	57	43	45	24	15	20	26	16	24	30	13	18	16	27	25	16	662	Shiga
35	Yamaguchi	63	41	28		41		36	31	26	33	19	17	31	30	28	22	50	38	17	27	22	13	15	628	Yamaguchi
37	Kagawa	40	46	49		41		51	43	35	25	29	18	15	27	24	15	17	24	23	22	20	8	13	585	Kagawa
42	Nagasaki	73	55	44		46		27	46	25	14	18	14	24	21	20	23	22	23	22	18	14	19	13	581	Nagasaki
39	Kochi	46	51	32		22		30	24	26	26	25	19	14	19	14	16	9	19	25	18	14	14	13	476	Kochi
41	Saga	22	25	17		9		27	22	25	17	20	8	21	18	30	12	24	14	11	20	21	14	13	390	Saga
44	Oita	45	34	21		39		36	36	28	23	15	18	32	27	18	19	17	18	11	23	14	21	11	506	Oita
45	Miyazaki	27	47	24		28		28	31	24	27	17	21	20	21	12	15	9	19	13	17	14	23	10	447	Miyazaki
18	Fukui	15	26	32		16		35	28	13	17	11	18	18	14	13	14	20	10	12	15	12	12	8	359	Fukui
31	Tottori	23	21	17		20		13	6	12	10	7	5	5	12	11	13	8	10	16	10	7	4	8	238	Tottori
32	Shimane	23	21	21		13		24	15	13	17	7	10	12	6	7	6	5	10	5	6	8	5	7	241	Shimane
	total	4,462	4,593	4,556		3,990		3,937	4,106	3,858	3,338	2,322	2,179	2,654	2,720	2,854	2,996	2,526	2,431	2,427	2,463	2,351	2,110	2,288	65,161	total

Data source : <https://anzeninfo.mhlw.go.jp/user/anzen/tok/anst00.htm>

Return to https://www.jisha.or.jp/english/statistics/202211_23.html