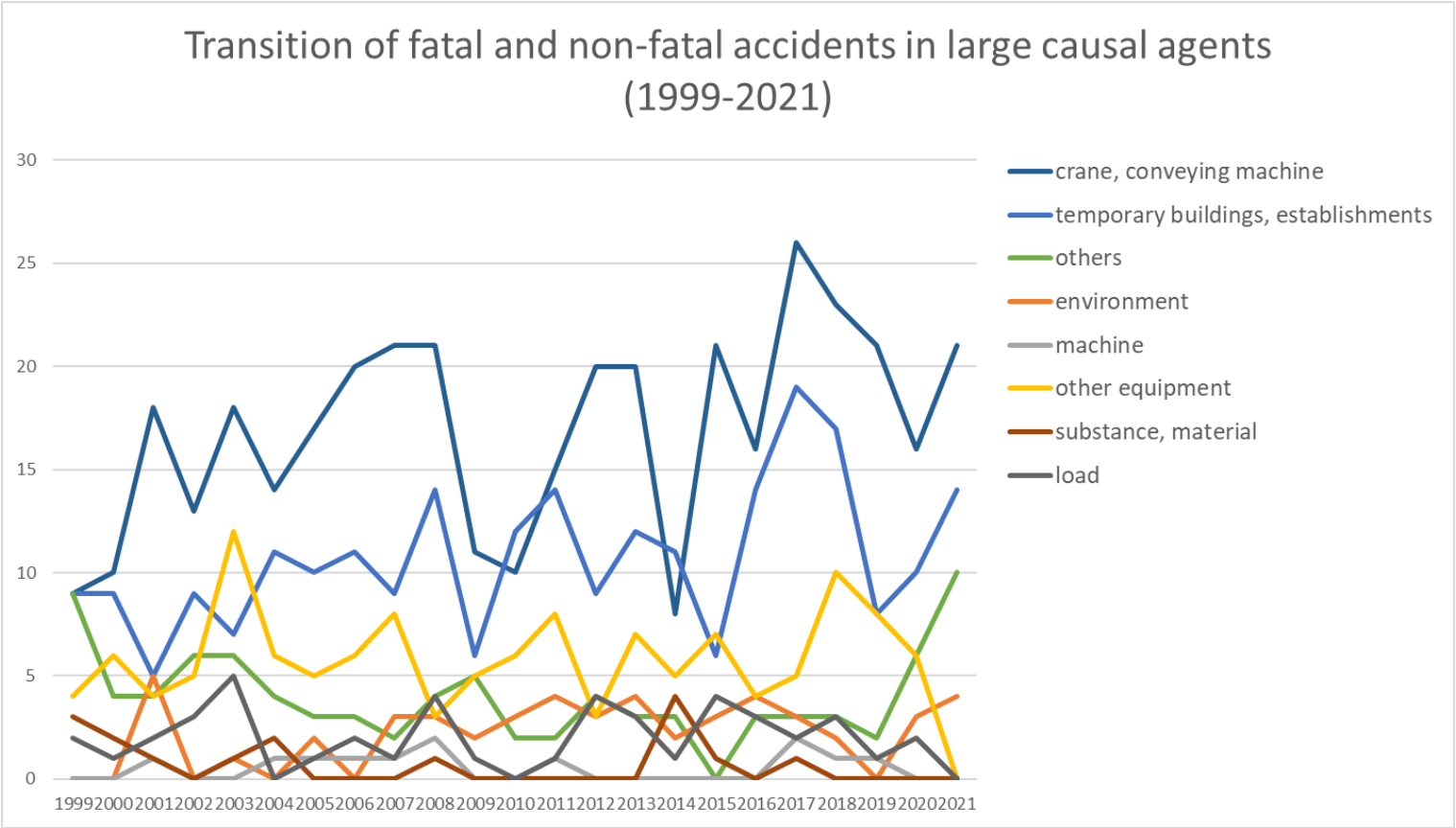
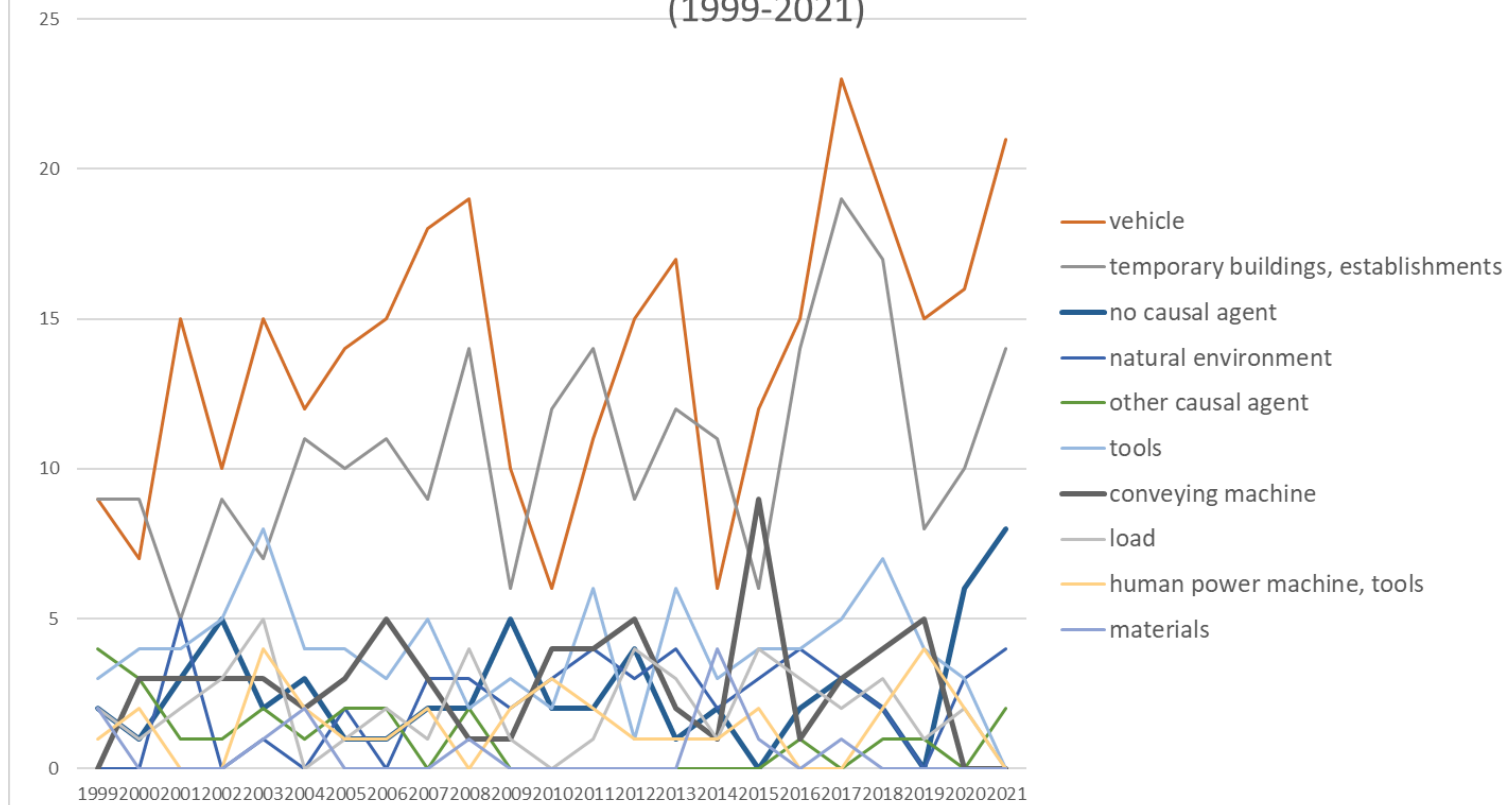


Transition of fatal and non-fatal accidents in each element like as causal agents, type of accidents, etc. in code no. 040209 other passenger transport service (1999-2021)



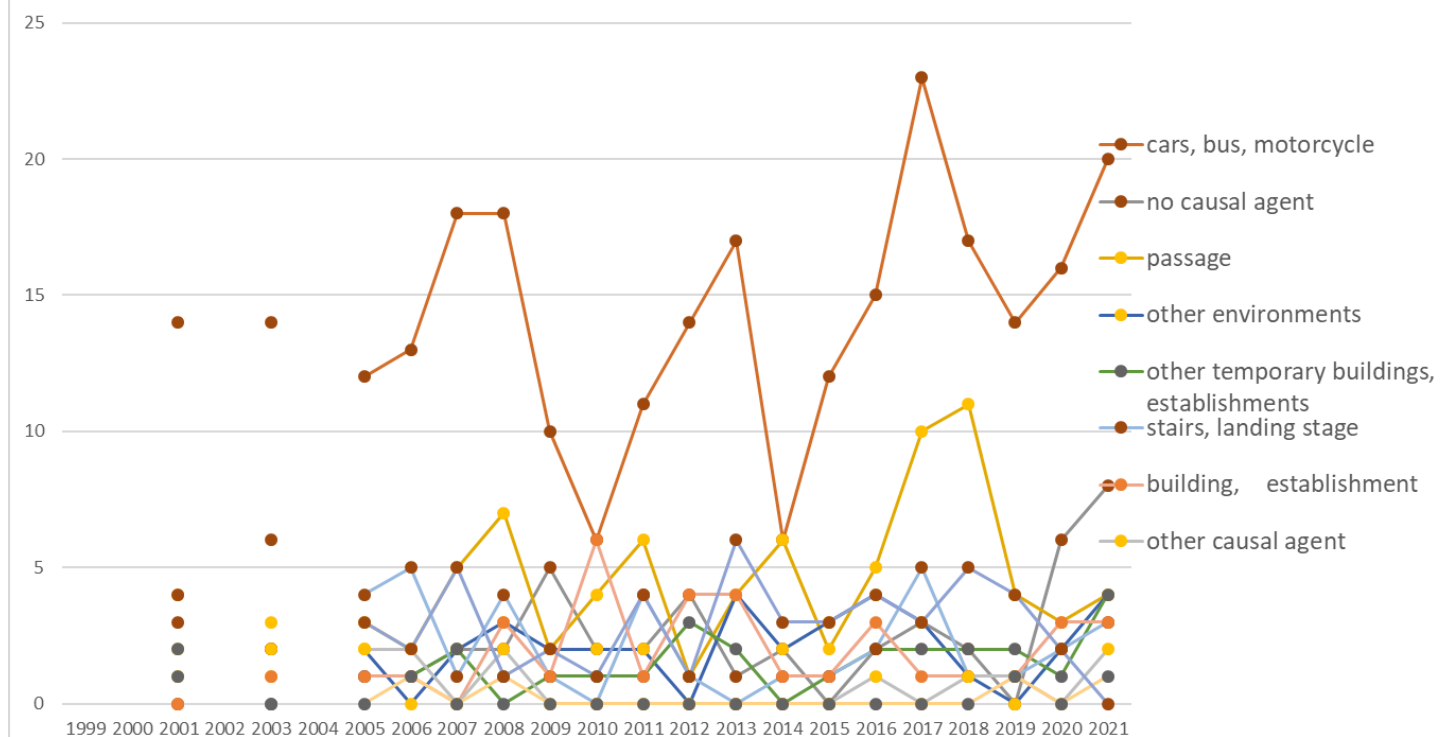
Transition of fatal and non-fatal accidents in large causal agents in code no. 040209 other passenger transport service (1999-2021)

Transition of fatal and non-fatal accidents in top 10 middle causal agents
(1999-2021)

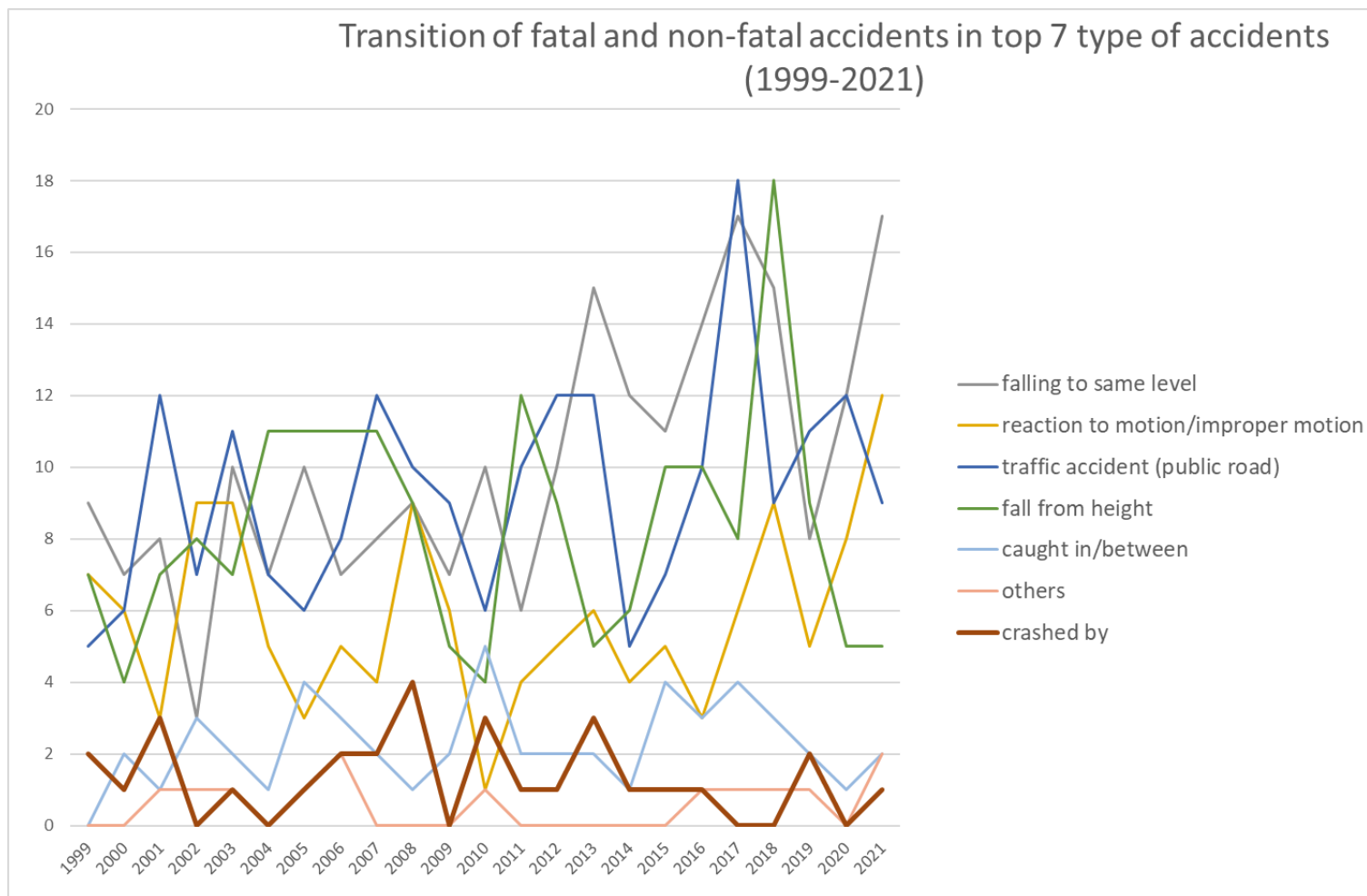


Transition of fatal and non-fatal accidents in middle causal agents in code no. 040209 other passenger transport service (1999-2021)

Transition of fatal and non-fatal accidents in top 10 small causal agents (1999-2021)

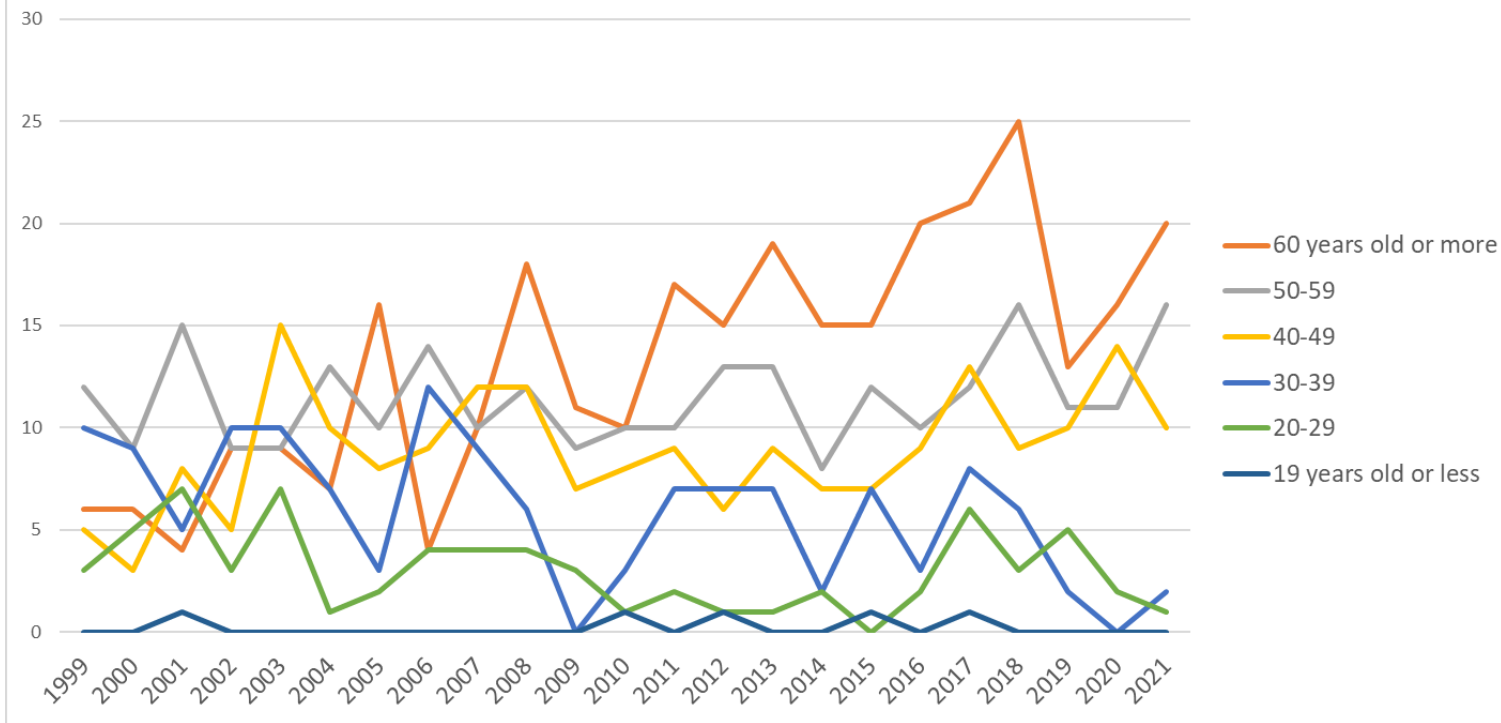


Transition of fatal and non-fatal accidents in small causal agents in code no. 040209 other passenger transport service (1999-2021)

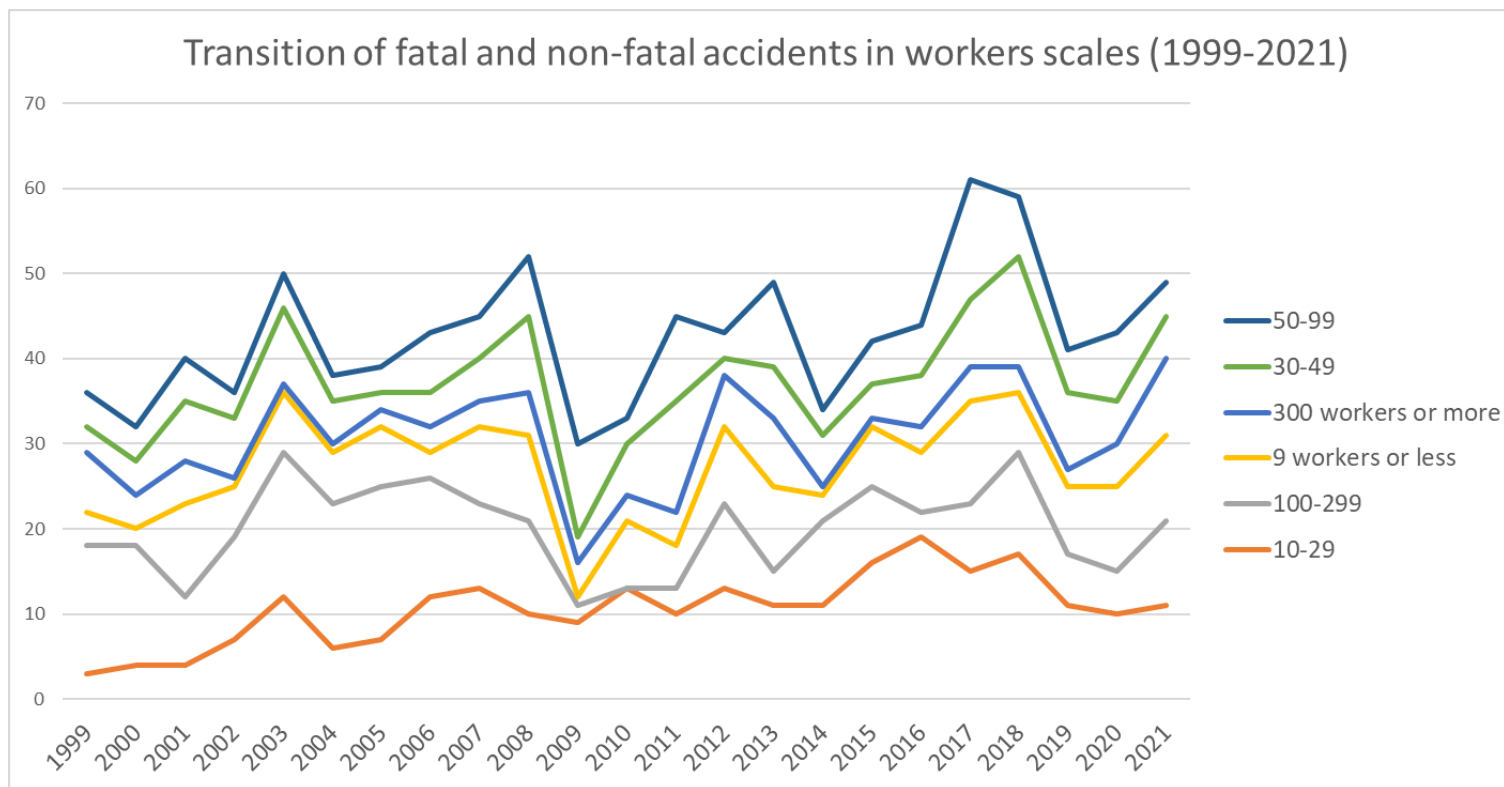


Transition of fatal and non-fatal accidents in type of accidents in code no. 040209 other passenger transport service (1999-2021)

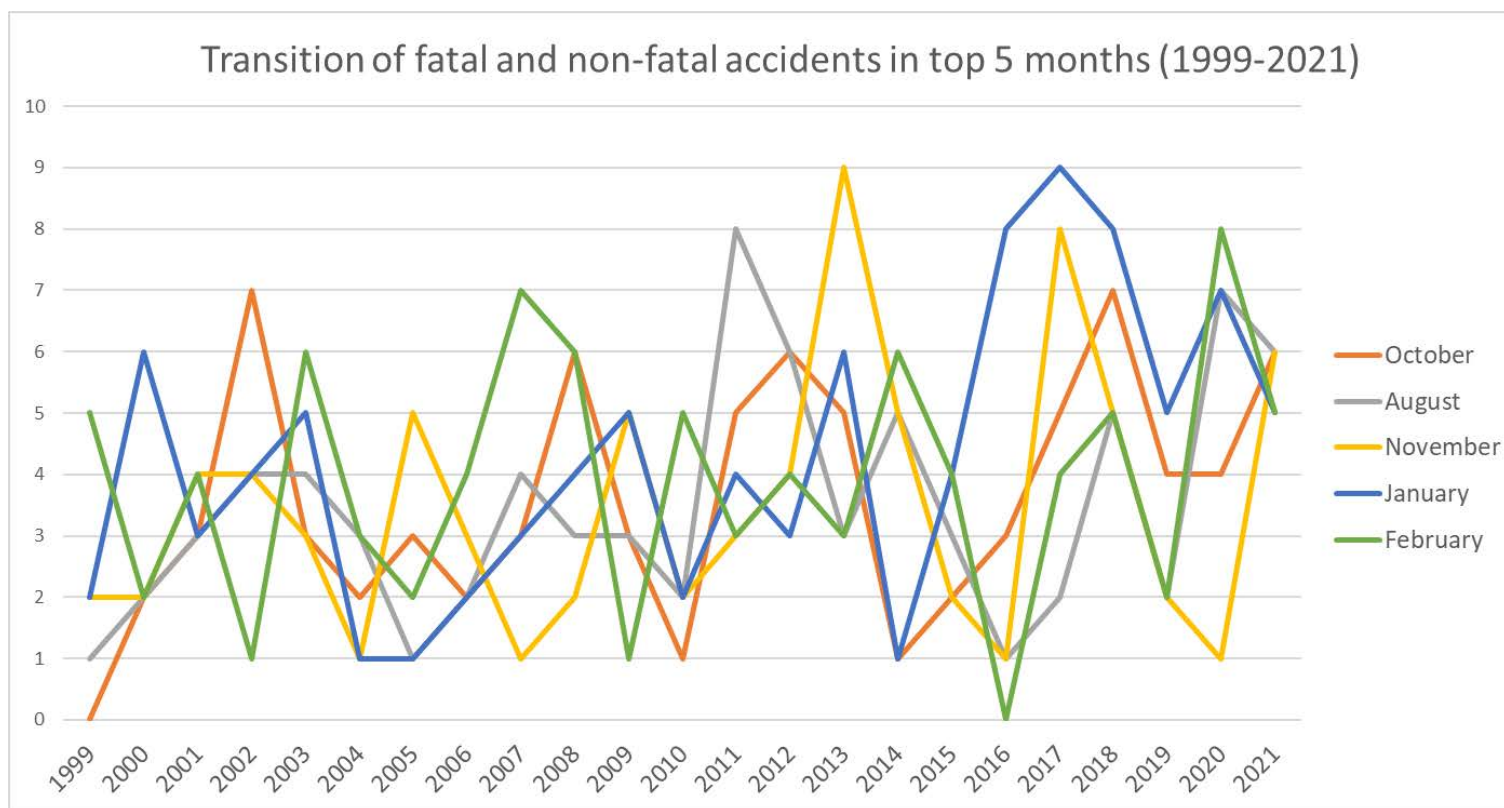
Transition of fatal and non-fatal accidents in workers ages (1999-2021)



Transition of fatal and non-fatal accidents in workers ages in code no. 040209 other passenger transport service (1999-2021)

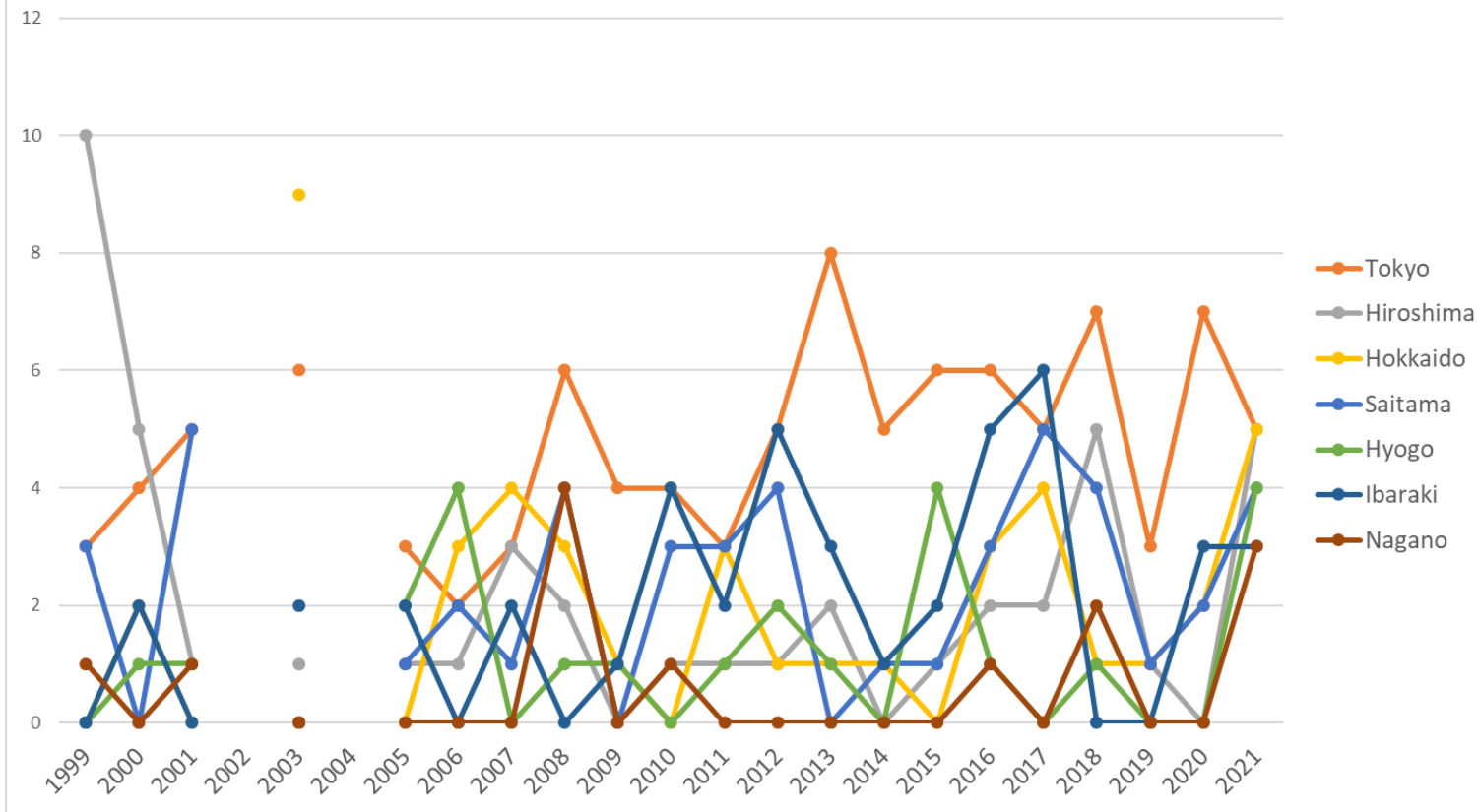


Transition of fatal and non-fatal accidents in workers scales in code no. 040209 other passenger transport service (1999-2021)



Transition of fatal and non-fatal accidents in months in code no. 040209 other passenger transport service (1999-2021)

Transition of fatal and non-fatal accidents in top 7 prefectures (1999-2021)



Transition of fatal and non-fatal accidents in prefectures in code no. 040209 other passenger transport service (1999-2021)

Transition of fatal and non-fatal accidents in large causal agents in code no. 040209 other passenger transport service (1999-2021)

code	Causal (L) agents	1999	2000	2001	2002	2003	2004	2005	2006	2007	2008	2009	2010	2011	2012	2013	2014	2015	2016	2017	2018	2019	2020	2021	total	Causal (L) agents
2	crane, conveying machine	9	10	18	13	18	14	17	20	21	21	11	10	15	20	20	8	21	16	26	23	21	16	21	389	crane, conveying machine
4	temporary buildings, establishments	9	9	5	9	7	11	10	11	9	14	6	12	14	9	12	11	6	14	19	17	8	10	14	246	temporary buildings, establishments

																										establishments
9	others	9	4	4	6	6	4	3	3	2	4	5	2	2	4	3	3		3	3	3	2	6	10	91	others
7	environment			5		1		2		3	3	2	3	4	3	4	2	3	4	3	2		3	4	51	environment
1	machine			1			1	1	1	1	2			1						2	1	1			12	machine
3	other equipment	4	6	4	5	12	6	5	6	8	3	5	6	8	3	7	5	7	4	5	10	8	6		133	other equipment
5	substance, material	3	2	1		1	2				1						4	1		1					16	substance, material
6	load	2	1	2	3	5		1	2	1	4	1		1	4	3	1	4	3	2	3	1	2		46	load
	total	36	32	40	36	50	38	39	43	45	52	30	33	45	43	49	34	42	44	61	59	41	43	49	984	total

Transition of fatal and non-fatal accidents in middle causal agents in code no. 040209 other passenger transport service (1999-2021)

code	Causal (M) agents	1999	2000	2001	2002	2003	2004	2005	2006	2007	2008	2009	2010	2011	2012	2013	2014	2015	2016	2017	2018	2019	2020	2021	total	Causal (M) agents
23	vehicle	9	7	15	10	15	12	14	15	18	19	10	6	11	15	17	6	12	15	23	19	15	16	21	320	vehicle
41	temporary buildings, establishments	9	9	5	9	7	11	10	11	9	14	6	12	14	9	12	11	6	14	19	17	8	10	14	246	temporary buildings, establishments
92	no causal agent	2	1	3	5	2	3	1	1	2	2	5	2	2	4	1	2		2	3	2		6	8	59	no causal agent
71	natural environment			5		1		2		3	3	2	3	4	3	4	2	3	4	3	2		3	4	51	natural environment
91	other causal agent	4	3	1	1	2	1	2	2		2								1		1	1		2	23	other causal agent
37	tools	3	4	4	5	8	4	4	3	5	2	3	2	6	1	6	3	4	4	5	7	4	3		90	tools

22	conveying machine		3	3	3	3	2	3	5	3	1	1	4	4	5	2	1	9	1	3	4	5			65	conveying machine
61	load	2	1	2	3	5		1	2	1	4	1		1	4	3	1	4	3	2	3	1	2		46	load
36	human power machine, tools	1	2			4	2	1	1	2		2	3	2	1	1	1	2			2	4	2		33	human power machine, tools
52	materials	2				1	2				1						4	1		1					12	materials
39	other equipments, facilities								2	1			1		1		1	1			1		1		9	other equipments, facilities
99	unclassifiable	3				2										2	1					1			9	unclassifiable
12	power transmission mechanism			1			1		1					1											4	power transmission mechanism
16	general machine										1									2	1				4	general machine
21	crane										1					1	1					1			4	crane
51	hazards, harmful substances	1	2	1																					4	hazards, harmful substances
14	construction machine							1		1												1			3	construction machine
13	woodworking machine										1														1	woodworking machine
35	electric equipment										1														1	electric equipment

11	engine																										engine
15	metal manufacturing machine																										metal manufacturing machine
17	mobile silviculture machine																										mobile silviculture machine
31	pressure vessel																										pressure vessel
32	chemical facilities																										chemical facilities
33	welding equipment																										welding equipment
34	kiln, caldron																										kiln, caldron
	total	36	32	40	36	50	38	39	43	45	52	30	33	45	43	49	34	42	44	61	59	41	43	49	984	total	

Transition of fatal and non-fatal accidents in small causal agents in code no. 040209 other passenger transport service (1999-2021)

code	Causal (S) agents	1999	2000	2001	2002	2003	2004	2005	2006	2007	2008	2009	2010	2011	2012	2013	2014	2015	2016	2017	2018	2019	2020	2021	total	Causal (S) agents
231	cars, bus, motorcycle			14		14		12	13	18	18	10	6	11	14	17	6	12	15	23	17	14	16	20	270	cars, bus, motorcycle
921	no causal agent			3		2		1	1	2	2	5	2	2	4	1	2		2	3	2		6	8	48	no causal agent
417	passage			2		3		3	2	5	7	2	4	6	1	4	6	2	5	10	11	4	3	4	84	passage
719	other environments			4		1		2		2	3	2	2	2		4	2	3	4	3	1		2	4	41	other environments
419	other temporary buildings, establishments			2				1	1	2		1	1	1	3	2		1	2	2	2	2	1	4	28	other temporary buildings, establishments

413	stairs, landing stage					2		4	5	1	4	1		4	1		1	1	2	5	1	1	2	3	38	stairs, landing stage
418	building, establishment					1		1	1		3	1	6	1	4	4	1	1	3	1	1	1	3	3	36	building, establishment
911	other causal agent			1		2		2	2		2								1		1	1		2	14	other causal agent
232	railway vehicle			1					1		1											1		1	5	railway vehicle
371	ladder			4		6		3	2	5	1	2	1	4	1	6	3	3	4	3	5	4	2		59	ladder
221	truck			3		3		3	4	3	1		4	2	5	1	1	9	1	3	4	5			52	truck
611	load			2		5		1	2	1	4	1		1	3	2	1	4	3	2	3	1	2		38	load
362	human power hauling equipment					3		1		2		2	2	1	1	1					2	4	1		20	human power hauling equipment
416	working platform, boot board			1		1		1	1	1			1	1		2	2	1	2		2		1		17	working platform, boot board
379	other tools					2		1	1		1	1	1	2				1		2	2		1		15	other tools
391	other equipment, facilities								2	1			1		1		1	1			1		1		9	other equipment, facilities
239	other vehicles					1		2	1						1						2				7	other vehicles
715	high/cold temperature environment			1						1			1		2						1				6	high/cold temperature environment
999	unclassifiable					2										2	1					1			6	unclassifiable
529	other materials					1					1						1	1		1					5	other materials
169	other general power machines										1									2	1				4	other general power machines
361	human power												1					2					1		4	human power

[illegible]

[illegible]

[illegible]

[illegible]

511	explosive substance																									explosive substance
512	inflammable substance																									inflammable substance
513	inflammable gas																									inflammable gas
514	harmful substance																									harmful substance
515	radiation																									radiation
523	stone, sand, substance																									stone, sand, substance
714	abnormal environment																									abnormal environment
	total			40		50		39	43	45	52	30	33	45	43	49	34	42	44	61	59	41	43	49	842	total

Transition of fatal and non-fatal accidents in type of accidents in code no. 040209 other passenger transport service (1999-2021)

code	Type of accidents	1999	2000	2001	2002	2003	2004	2005	2006	2007	2008	2009	2010	2011	2012	2013	2014	2015	2016	2017	2018	2019	2020	2021	total	Type of accidents
02	falling to same level	9	7	8	3	10	7	10	7	8	9	7	10	6	10	15	12	11	14	17	15	8	12	17	232	falling to same level
19	reaction to motion/improper motion	7	6	3	9	9	5	3	5	4	9	6	1	4	5	6	4	5	3	6	9	5	8	12	134	reaction to motion/improper motion
17	traffic accident (public road)	5	6	12	7	11	7	6	8	12	10	9	6	10	12	12	5	7	10	18	9	11	12	9	214	traffic accident (public road)
01	fall from height	7	4	7	8	7	11	11	11	11	9	5	4	12	9	5	6	10	10	8	18	9	5	5	192	fall from height
07	caught in/between		2	1	3	2	1	4	3	2	1	2	5	2	2	2	1	4	3	4	3	2	1	2	52	caught in/between
90	others			1	1	1		1	2				1						1	1	1	1		2	13	others

06	crashed by	2	1	3		1		1	2	2	4		3	1	1	3	1	1	1			2		1	30	crashed by
11	contact to high/low-temperature		2	1		1				1			1			2					2			1	11	contact to high/low-temperature
03	crash	1	3	3	3	4	4	1	2	5	3	1	2	3	3	1	1	2		2	1	1	4		50	crash
04	struck by flying or falling object	2		1			2		1		1			3		1	1	2	1	2	1	1	1		20	struck by flying or falling object
08	cut				1	1	1	1			5			2			1			3					15	cut
99	unclassifiable	2				2		1								2	1		1						9	unclassifiable
05	collapse		1		1	1			1						1		1								6	collapse
10	drown													2											2	drown
18	traffic accident (others)								1													1			2	traffic accident (others)
09	injury to the sole of the foot										1														1	injury to the sole of the foot
16	fire	1																							1	fire
12	contact to harmful substance																									contact to harmful substance
13	electric shock																									electric shock
14	explosion																									explosion
15	burst																									burst
	total	36	32	40	36	50	38	39	43	45	52	30	33	45	43	49	34	42	44	61	59	41	43	49	984	total

code	Age	1999	2000	2001	2002	2003	2004	2005	2006	2007	2008	2009	2010	2011	2012	2013	2014	2015	2016	2017	2018	2019	2020	2021	total	Age
6	60 years old or more	6	6	4	9	9	7	16	4	10	18	11	10	17	15	19	15	15	20	21	25	13	16	20	306	60 years old or more
5	50-59	12	9	15	9	9	13	10	14	10	12	9	10	10	13	13	8	12	10	12	16	11	11	16	264	50-59
4	40-49	5	3	8	5	15	10	8	9	12	12	7	8	9	6	9	7	7	9	13	9	10	14	10	205	40-49
3	30-39	10	9	5	10	10	7	3	12	9	6		3	7	7	7	2	7	3	8	6	2		2	135	30-39
2	20-29	3	5	7	3	7	1	2	4	4	4	3	1	2	1	1	2		2	6	3	5	2	1	69	20-29
1	19 years old or less			1									1		1			1		1					5	19 years old or less
	total	36	32	40	36	50	38	39	43	45	52	30	33	45	43	49	34	42	44	61	59	41	43	49	984	total

code	Workers scale	1999	2000	2001	2002	2003	2004	2005	2006	2007	2008	2009	2010	2011	2012	2013	2014	2015	2016	2017	2018	2019	2020	2021	total	Workers scale
2	10-29	3	4	4	7	12	6	7	12	13	10	9	13	10	13	11	11	16	19	15	17	11	10	11	244	10-29
5	100-299	15	14	8	12	17	17	18	14	10	11	2		3	10	4	10	9	3	8	12	6	5	10	218	100-299
1	9 workers or less	4	2	11	6	7	6	7	3	9	10	1	8	5	9	10	3	7	7	12	7	8	10	10	162	9 workers or less
6	300 workers or more	7	4	5	1	1	1	2	3	3	5	4	3	4	6	8	1	1	3	4	3	2	5	9	85	300 workers or more
3	30-49	3	4	7	7	9	5	2	4	5	9	3	6	13	2	6	6	4	6	8	13	9	5	5	141	30-49
4	50-99	4	4	5	3	4	3	3	7	5	7	11	3	10	3	10	3	5	6	14	7	5	8	4	134	50-99
	total	36	32	40	36	50	38	39	43	45	52	30	33	45	43	49	34	42	44	61	59	41	43	49	984	total

[illegible]

10	October		2	3	7	3	2	3	2	3	6	3	1	5	6	5	1	2	3	5	7	4	4	6	83	October
8	August	1	2	3	4	4	3	1	2	4	3	3	2	8	6	3	5	3	1	2	5	2	7	6	80	August
11	November	2	2	4	4	3	1	5	3	1	2	5	2	3	4	9	5	2	1	8	5	2	1	6	80	November
1	January	2	6	3	4	5	1	1	2	3	4	5	2	4	3	6	1	4	8	9	8	5	7	5	98	January
2	February	5	2	4	1	6	3	2	4	7	6	1	5	3	4	3	6	4		4	5	2	8	5	90	February
3	March	3	4	4	1	6	2	8	2	6	6	3	4	6	2	2	2	3	4	12	7	7	3	4	101	March
4	April	5	2	9	2	3	5	2	3	3	3	2	3	3	1	8	2	4	8	2	4	3	2	4	83	April
5	May	4	4			2	6	3	5	4	6		5	3		1	1	2	7	6	1	2	1	4	67	May
12	December	3	2	2	3	1		5	7	3	7	5	1	2	5	4	1	7		4	7	5	5	3	82	December
7	July	1	2	3	3	6	7	6	2	3	3		1	2	5	4	3	4	4	2	3	4	2	3	73	July
6	June	5	2	2	5	4	5	2	5	4	5	1	4	3	1	1	4	2	4	5	3	3	1	2	73	June
9	September	5	2	3	2	7	3	1	6	4	1	2	3	3	6	3	3	5	4	2	4	2	2	1	74	September
	total	36	32	40	36	50	38	39	43	45	52	30	33	45	43	49	34	42	44	61	59	41	43	49	984	total

Transition of fatal and non-fatal accidents in prefectures in code no. 040209 other passenger transport service (1999-2021)

code	Prefecture	1999	2000	2001	2002	2003	2004	2005	2006	2007	2008	2009	2010	2011	2012	2013	2014	2015	2016	2017	2018	2019	2020	2021	total	Prefecture
13	Tokyo	3	4	5		6		3	2	3	6	4	4	3	5	8	5	6	6	5	7	3	7	5	100	Tokyo
34	Hiroshima	10	5	1		1		1	1	3	2		1	1	1	2		1	2	2	5	1		5	45	Hiroshima
1	Hokkaido		2			9			3	4	3	1		3	1	1	1		3	4	1	1	2	5	44	Hokkaido
11	Saitama	3		5				1	2	1	4		3	3	4		1	1	3	5	4	1	2	4	47	Saitama
28	Hyogo		1	1				2	4		1	1		1	2	1		4	1		1			4	24	Hyogo
8	Ibaraki		2			2		2		2		1	4	2	5	3	1	2	5	6			3	3	43	Ibaraki
20	Nagano	1		1							4		1						1		2			3	13	Nagano
27	Osaka	4	6	5		9		6	5	2	6	3	3	4	4	9	5	6	2	2	6	6	6	2	101	Osaka

[illegible]

17	Ishikawa			1					1		1			1	1					2			1			8	Ishikawa
24	Mie								1	1	1	1				1					2	1				8	Mie
2	Aomori							1						1		1		2	1	1						7	Aomori
3	Iwate			1						1	3	1			1											7	Iwate
16	Toyama	2	1								3					1										7	Toyama
37	Kagawa			3													1			1		1	1			7	Kagawa
19	Yamanashi			1					3						1		1									6	Yamanashi
36	Tokushima			1		1					1		1									1	1			6	Tokushima
38	Ehime							1											1	1			2			5	Ehime
42	Nagasaki		1																1	2			1			5	Nagasaki
29	Nara													1		1		1	1							4	Nara
33	Okayama									1				1	1						1					4	Okayama
35	Yamaguchi											2							1	1						4	Yamaguchi
41	Saga											1		1	1				1							4	Saga
30	Wakayama										1											1				2	Wakayama
18	Fukui																			1						1	Fukui
	total	36	32	40		50		39	43	45	52	30	33	45	43	49	34	42	44	61	59	41	43	49	910	total	

Data source : <https://anzeninfo.mhlw.go.jp/user/anzen/tok/anst00.htm>

Return to https://www.jisha.or.jp/english/statistics/202211_23.html