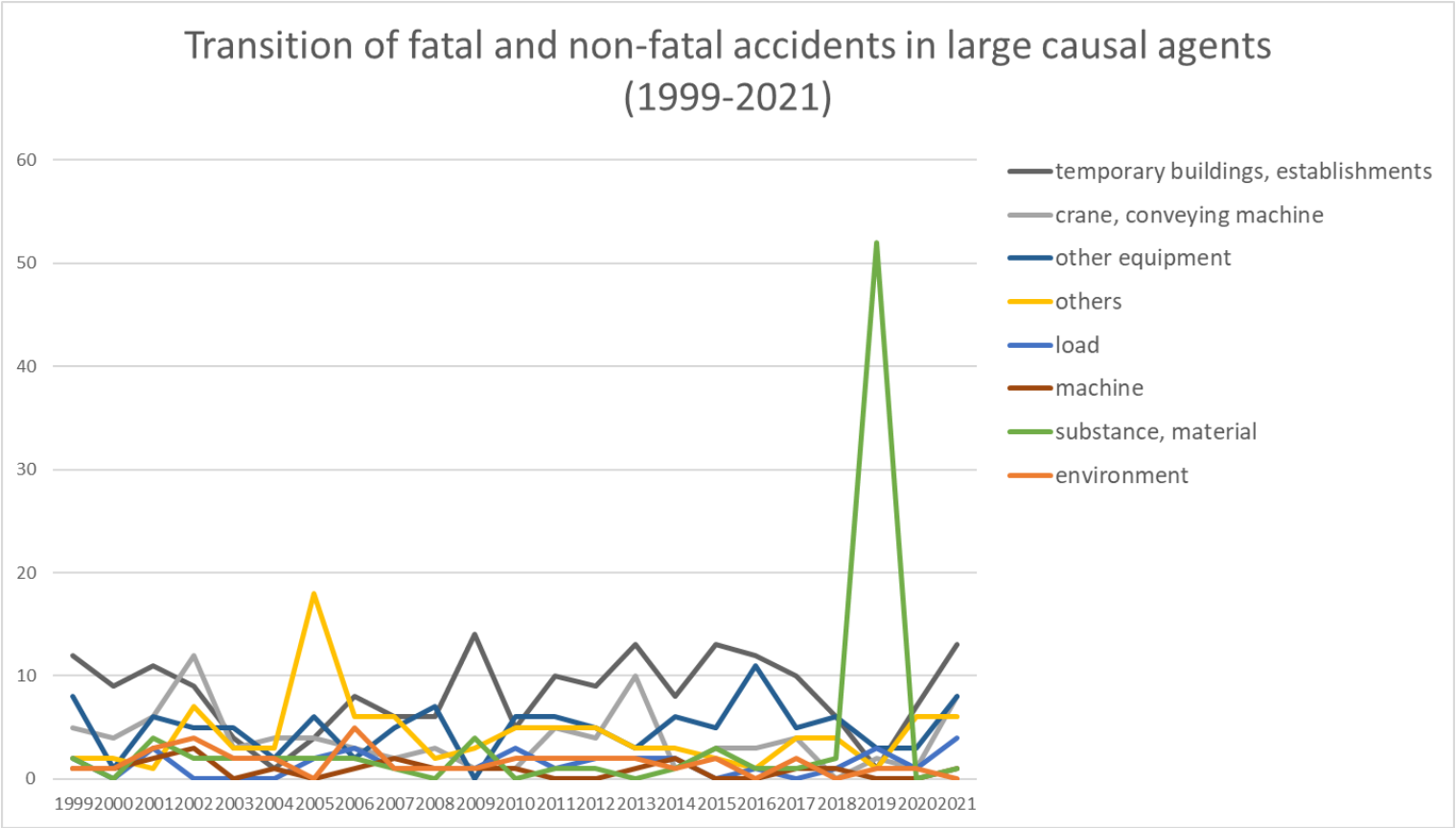
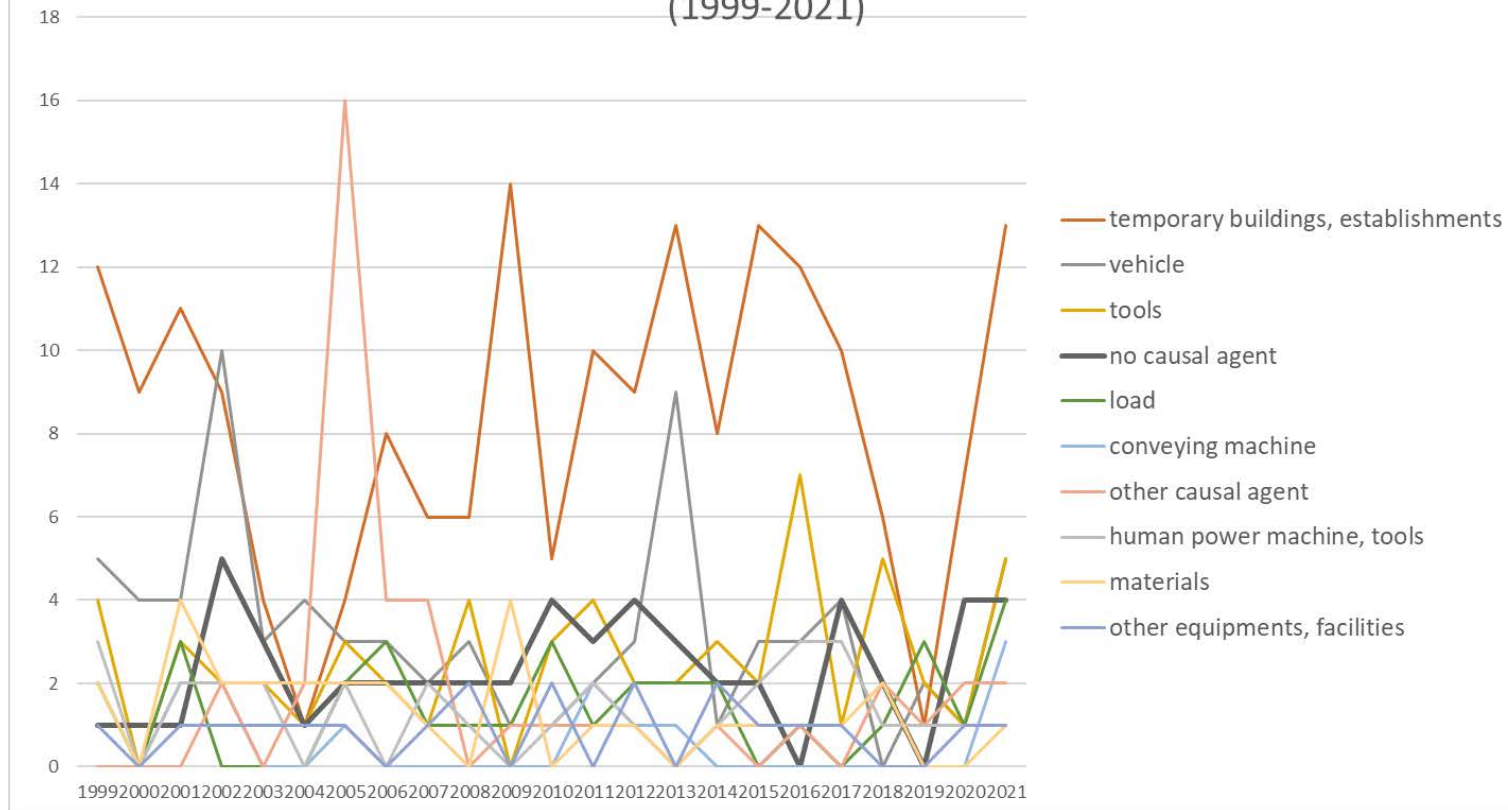


Transition of fatal and non-fatal accidents in each element like as causal agents, type of accidents, etc. in code no. 100101 movie production and delivery service (1999-2021)



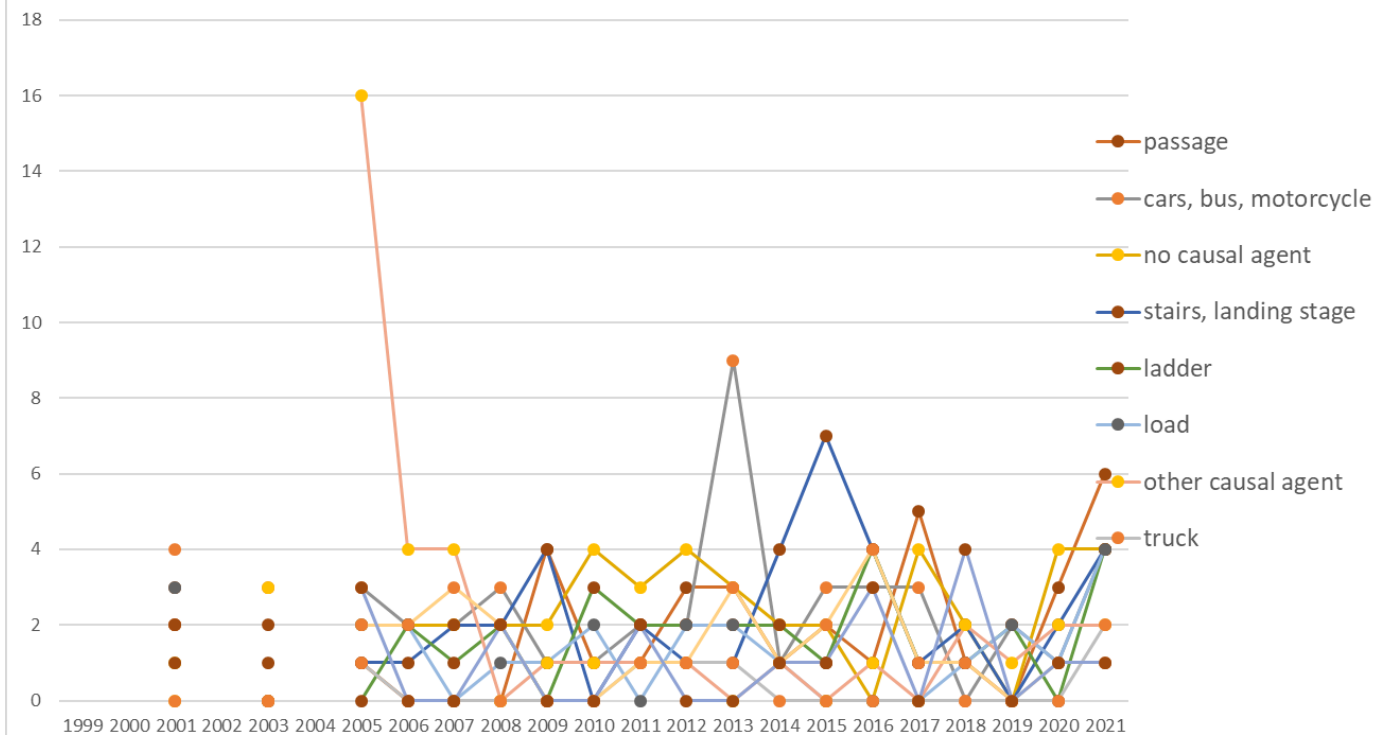
Transition of fatal and non-fatal accidents in large causal agents in code no. 100101 movie production and delivery service (1999-2021)

Transition of fatal and non-fatal accidents in top 10 middle causal agents  
(1999-2021)

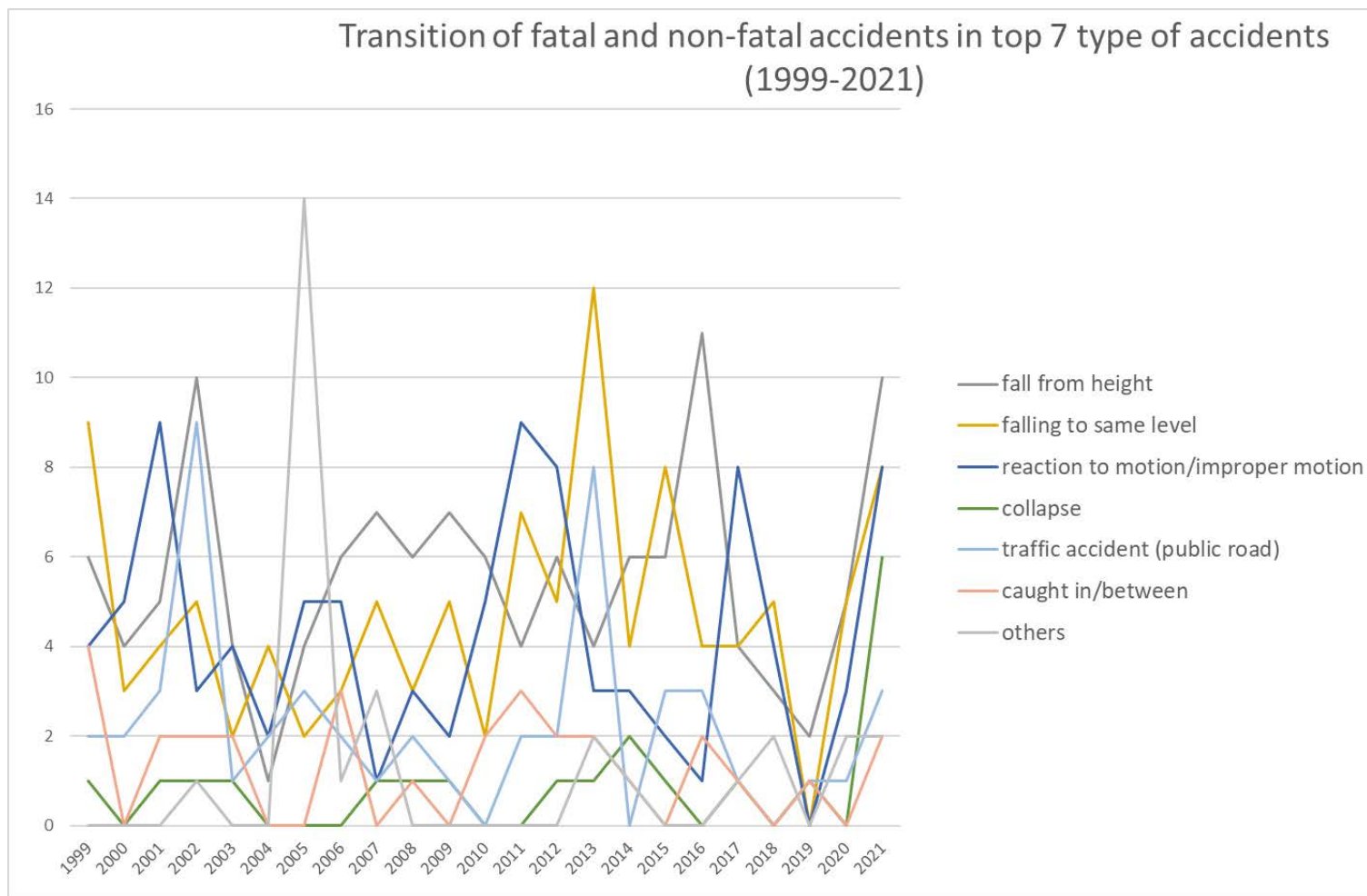


Transition of fatal and non-fatal accidents in middle causal agents in code no. 100101 movie production and delivery service (1999-2021)

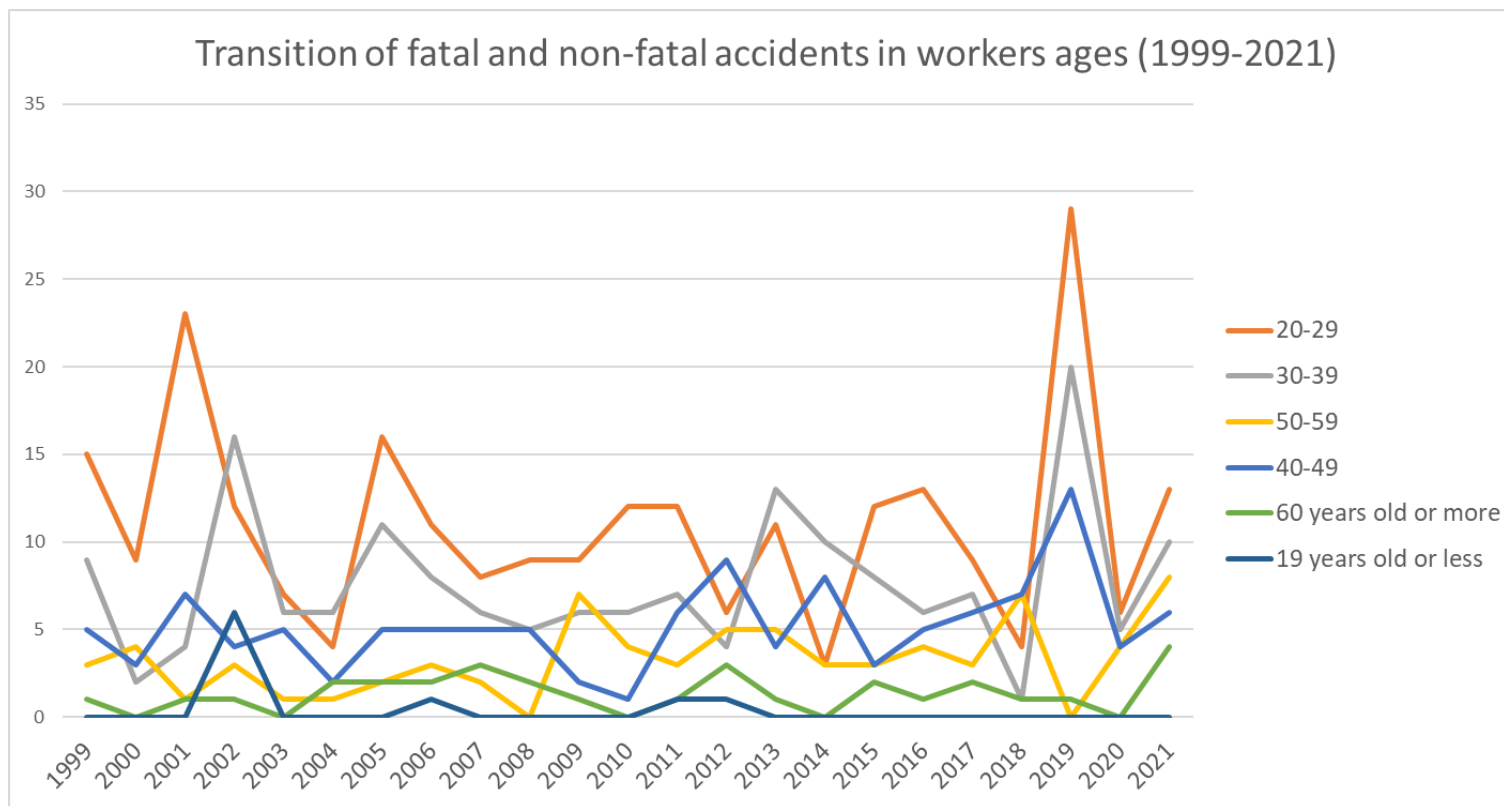
Transition of fatal and non-fatal accidents in top 10 small causal agents  
(1999-2021)



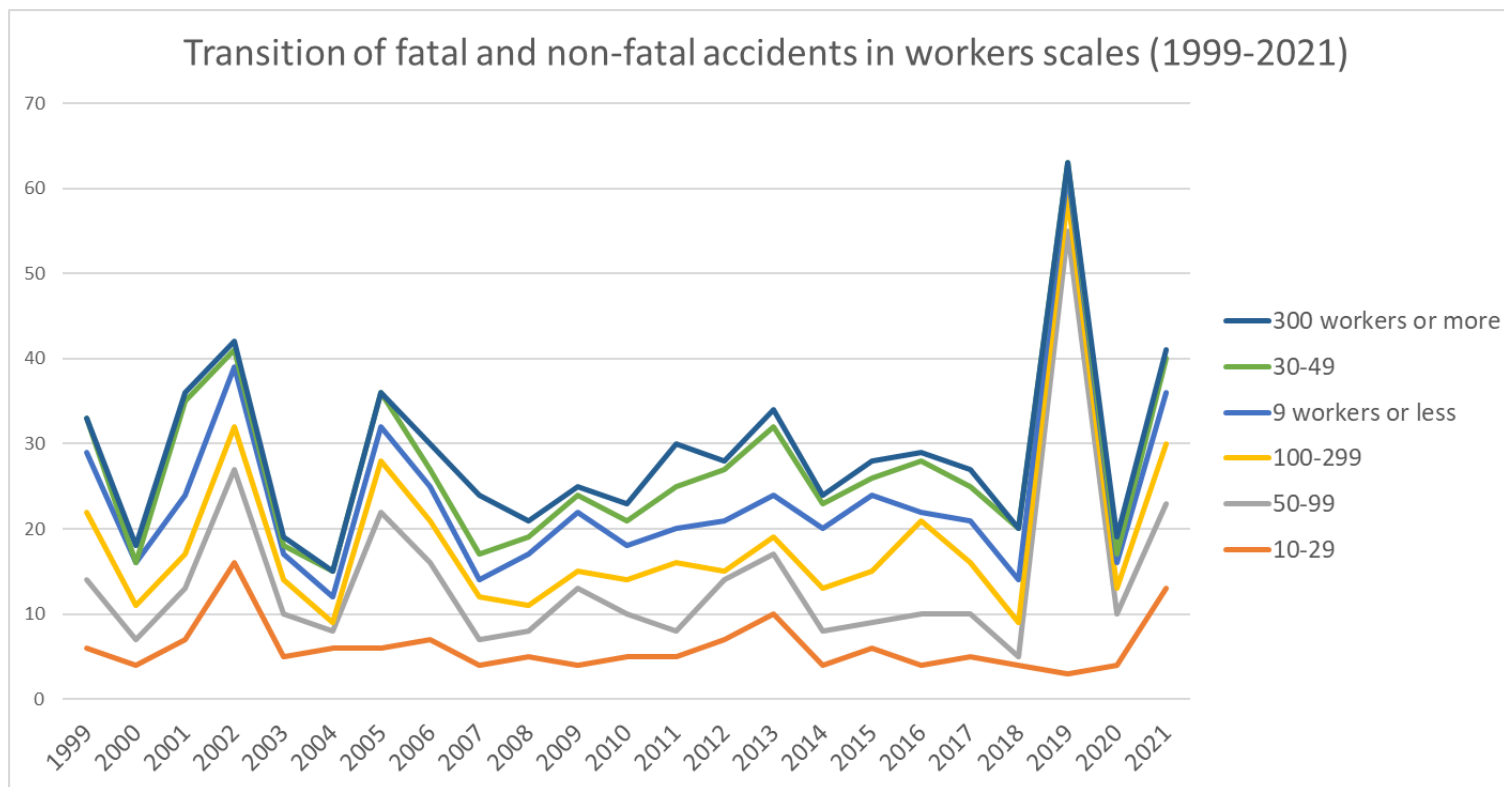
Transition of fatal and non-fatal accidents in small causal agents in code no. 100101 movie production and delivery service (1999-2021)



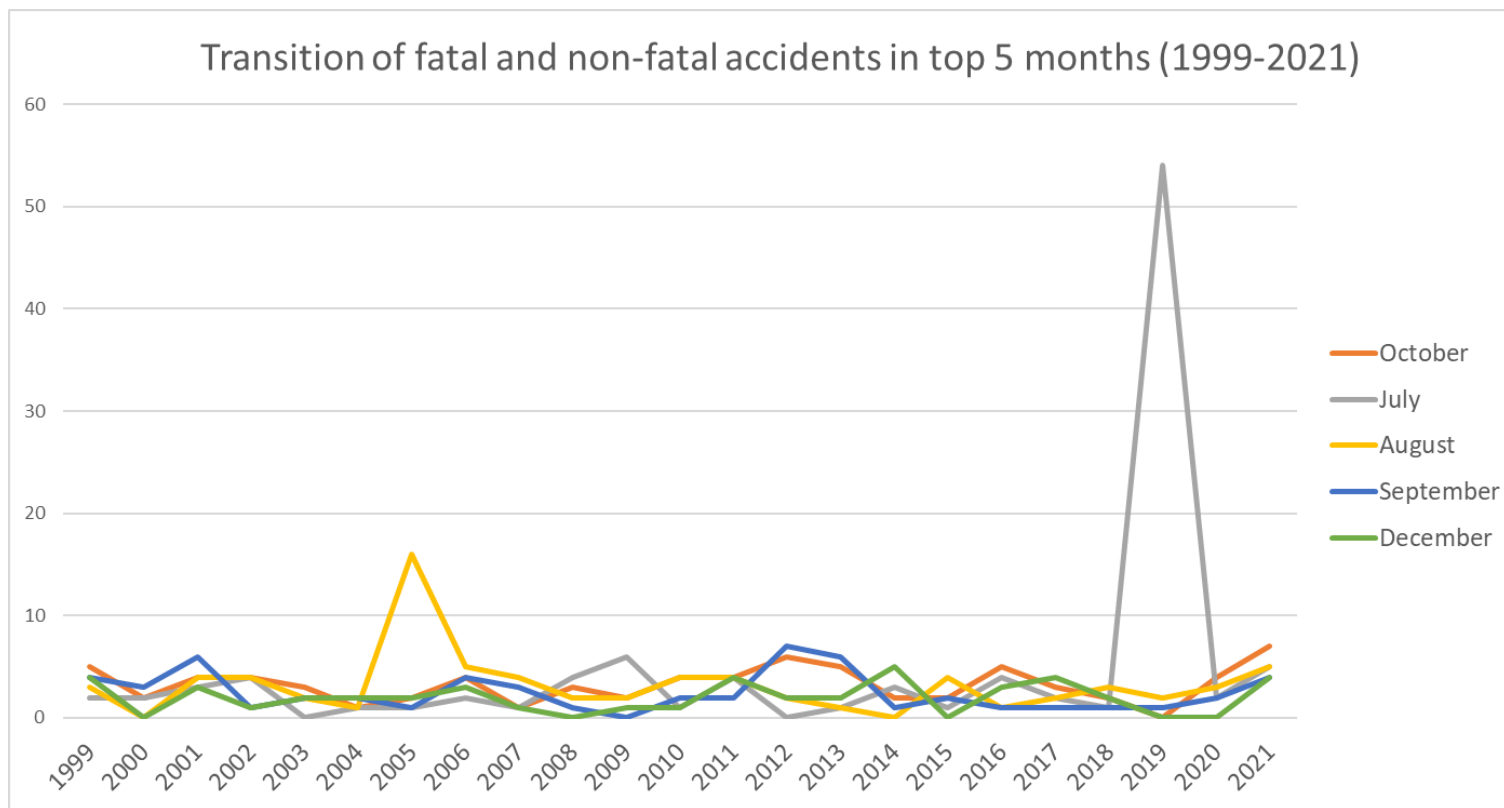
Transition of fatal and non-fatal accidents in type of accidents in code no. 100101 movie production and delivery service (1999-2021)



Transition of fatal and non-fatal accidents in workers ages in code no. 100101 movie production and delivery service (1999-2021)

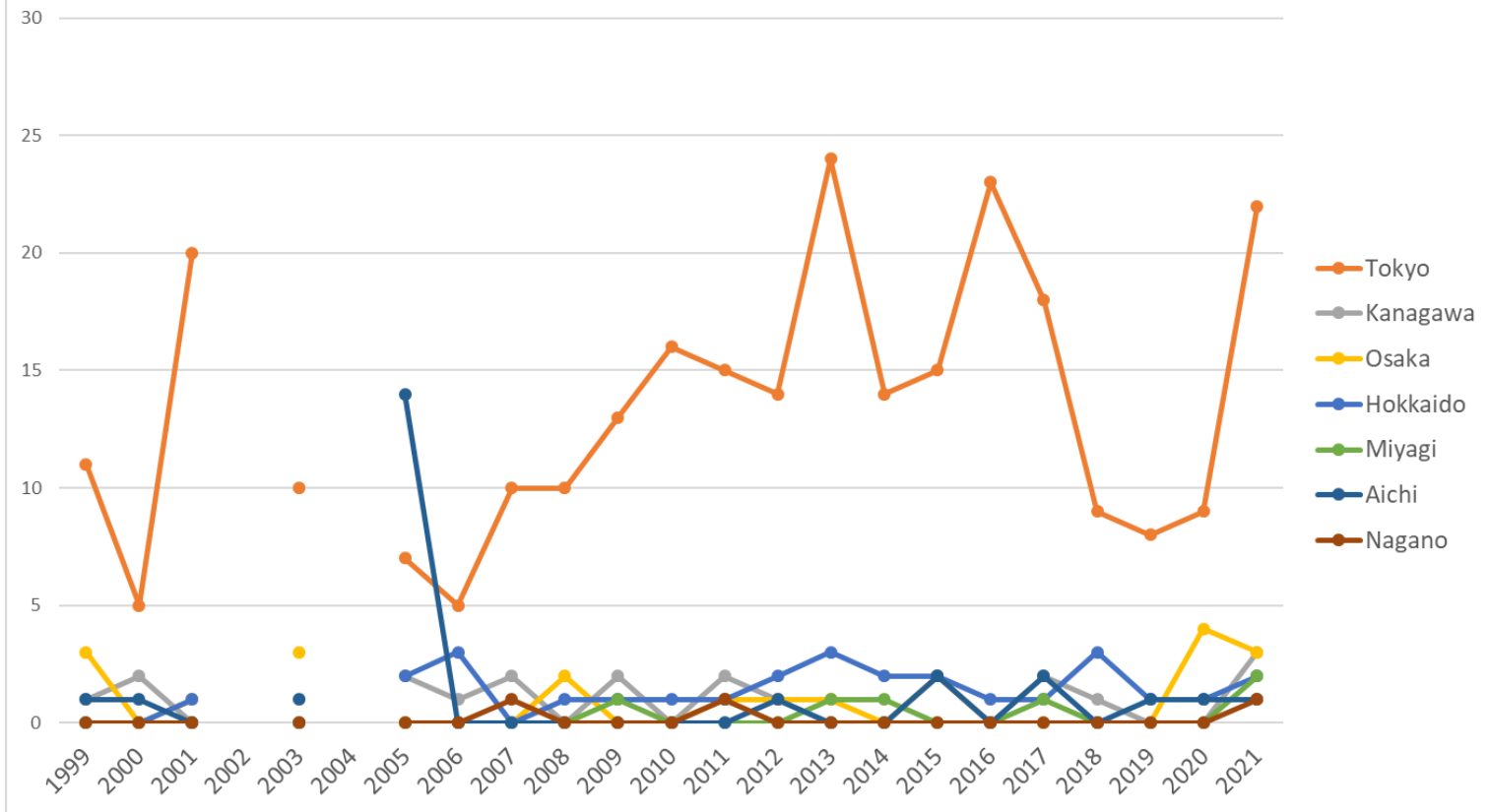


Transition of fatal and non-fatal accidents in workers scales in code no. 100101 movie production and delivery service (1999-2021)



Transition of fatal and non-fatal accidents in months in code no. 100101 movie production and delivery service (1999-2021)

Transition of fatal and non-fatal accidents in top 7 prefectures (1999-2021)



Transition of fatal and non-fatal accidents in prefectures in code no. 100101 movie production and delivery service (1999-2021)

Transition of fatal and non-fatal accidents in large causal agents in code no. 100101 movie production and delivery service (1999-2021)

code	Causal (L) agents	1999	2000	2001	2002	2003	2004	2005	2006	2007	2008	2009	2010	2011	2012	2013	2014	2015	2016	2017	2018	2019	2020	2021	total	Causal (L) agents
4	temporary buildings, establishments	12	9	11	9	4	1	4	8	6	6	14	5	10	9	13	8	13	12	10	6	1	7	13	191	temporary buildings, establishments
2	crane, conveying machine	5	4	6	12	3	4	4	3	2	3	1	1	5	4	10	1	3	3	4		2	1	8	89	crane, conveying





[illegible]

12	power transmission mechanism																										transmission mechanism
14	construction machine																										construction machine
17	mobile silviculture machine																										mobile silviculture machine
31	pressure vessel																										pressure vessel
32	chemical facilities																										chemical facilities
33	welding equipment																										welding equipment
34	kiln, caldron																										kiln, caldron
	total	33	18	36	42	19	15	36	30	24	21	25	23	30	28	34	24	28	29	27	20	63	19	41	665	total	

Transition of fatal and non-fatal accidents in small causal agents in code no. 100101 movie production and delivery service (1999-2021)

code	Causal (S) agents	1999	2000	2001	2002	2003	2004	2005	2006	2007	2008	2009	2010	2011	2012	2013	2014	2015	2016	2017	2018	2019	2020	2021	total	Causal (S) agents
417	passage			3		1		1				4	1	1	3	3	1	2	1	5	1		3	6	36	passage
231	cars, bus, motorcycle			4		3		3	2	2	3	1	1	2	2	9	1	3	3	3		2	1	4	49	cars, bus, motorcycle
921	no causal agent			1		3		2	2	2	2	2	4	3	4	3	2	2		4	2		4	4	46	no causal agent
413	stairs, landing stage			2				1	1	2	2	4		2	1	1	4	7	4	1	2		2	4	40	stairs, landing stage
371	ladder			1					2	1	2		3	2	2	2	2	1	4	1	1	2		4	30	ladder
611	load			3				2	2		1	1	2		2	2	1				1	2	1	4	24	load

911	other causal agent							16	4	4		1	1	1	1		1		1		2	1	2	2	37	other causal agent
221	truck							1						1	1	1							2	6	truck	
419	other temporary buildings, establishments			2				2	2	3	2			1	1	3	1	2	4	1	1		1	1	27	other temporary buildings, establishments
379	other tools			2		2		3			2			2			1	1	3		4		1	1	22	other tools
416	working platform, boot board			2		1			1			1		6	1	1		1	2	1	1			1	19	working platform, boot board
391	other equipment, facilities			1		1		1		1	2		2		2		2	1	1	1			1	1	17	other equipment, facilities
362	human power hauling equipment					1					1		1	2	1			1	2	3		1	1	1	15	human power hauling equipment
522	lumber, bamboo			2		1		1	2			1			1				1	1				1	11	lumber, bamboo
131	circular sawing machine			1						2	1	1	1				1			1	1			1	10	circular sawing machine
239	other vehicles														1					1				1	3	other vehicles
414	opening								1											1				1	3	opening
222	forklift													1										1	2	forklift
359	other electrical equipment									1														1	2	other electrical equipment
512	inflammable substance																					52			52	inflammable substance
418	building, establishment			1		2			2		1	4	3		2	4				1	1	1	1		23	building, establishment
719	other environments			2					2				2		2	2	1								11	other environments



165	machine															1									1	machine
169	other general power machines			1																					1	other general power machines
219	other powered crane													1											1	other powered crane
232	railway vehicle								1																1	railway vehicle
351	transmission															1									1	transmission
361	human power cranes			1																					1	human power cranes
363	human power machine																	1							1	human power machine
511	explosive substance																	1							1	explosive substance
519	other hazards, harmful substances																	1							1	other hazards, harmful substances
523	stone, sand, substance													1											1	stone, sand, substance
999	unclassifiable													1											1	unclassifiable
111	engine																									engine
121	power transmission mechanism																									power transmission mechanism
132	band sawing machine																									band sawing machine
134	hollow chisel mortiser, wood																									hollow chisel mortiser, wood

[illegible]

[illegible]





342	industrial dryer																											industrial dryer
349	other kiln, caldron																											other kiln, caldron
352	electric power facilities																											electric power facilities
372	slinging tool																											slinging tool
412	timbering																											timbering
513	inflammable gas																											inflammable gas
514	harmful substance																											harmful substance
515	radiation																											radiation
714	abnormal environment																											abnormal environment
	total			36		19		36	30	24	21	25	23	30	28	34	24	28	29	27	20	63	19	41	557		total	

Transition of fatal and non-fatal accidents in type of accidents in code no. 100101 movie production and delivery service (1999-2021)

[illegible]

07	caught in/between	4		2	2	2			3		1		2	3	2	2	1		2	1		1		2	30	caught in/between
90	others				1			14	1	3						2	1			1	2		2	2	29	others
03	crash	2		2	5	3	1	2	5	1		3	3	1	3		1	3	1	3	1	3	2	1	46	crash
08	cut	3	1	3	1	1	1	1		2	2	2	1			1	3	2	1	1	2			1	29	cut
16	fire																					52			52	fire
04	struck by flying or falling object		1	1	2	1	3	3	3		1	3	2	1	1		2		4	1	3	1	1		34	struck by flying or falling object
06	crashed by			5	2			2	1	3	1	1	2	3		1			2			1			24	crashed by
18	traffic accident (others)		2		1		1		1							1			1						7	traffic accident (others)
11	contact to high/low-temperature																	2		1		1			4	contact to high/low-temperature
99	unclassifiable	1									1														2	unclassifiable
09	injury to the sole of the foot			1																					1	injury to the sole of the foot
10	drown	1																							1	drown
14	explosion																	1							1	explosion
12	contact to harmful substance																									contact to harmful substance
13	electric shock																									electric shock
15	burst																									burst
	total	33	18	36	42	19	15	36	30	24	21	25	23	30	28	34	24	28	29	27	20	63	19	41	665	total

Transition of fatal and non-fatal accidents in workers ages in code no. 100101 movie production and delivery service (1999-2021)

code	Age	1999	2000	2001	2002	2003	2004	2005	2006	2007	2008	2009	2010	2011	2012	2013	2014	2015	2016	2017	2018	2019	2020	2021	total	Age
2	20-29	15	9	23	12	7	4	16	11	8	9	9	12	12	6	11	3	12	13	9	4	29	6	13	253	20-29
3	30-39	9	2	4	16	6	6	11	8	6	5	6	6	7	4	13	10	8	6	7	1	20	5	10	176	30-39
5	50-59	3	4	1	3	1	1	2	3	2		7	4	3	5	5	3	3	4	3	7		4	8	76	50-59
4	40-49	5	3	7	4	5	2	5	5	5	5	2	1	6	9	4	8	3	5	6	7	13	4	6	120	40-49
6	60 years old or more	1		1	1		2	2	2	3	2	1		1	3	1		2	1	2	1	1		4	31	60 years old or more
1	19 years old or less				6				1					1	1										9	19 years old or less
	total	33	18	36	42	19	15	36	30	24	21	25	23	30	28	34	24	28	29	27	20	63	19	41	665	total

Transition of fatal and non-fatal accidents in workers scales in code no. 100101 movie production and delivery service (1999-2021)

code	Workers scale	1999	2000	2001	2002	2003	2004	2005	2006	2007	2008	2009	2010	2011	2012	2013	2014	2015	2016	2017	2018	2019	2020	2021	total	Workers scale
2	10-29	6	4	7	16	5	6	6	7	4	5	4	5	5	7	10	4	6	4	5	4	3	4	13	140	10-29
4	50-99	8	3	6	11	5	2	16	9	3	3	9	5	3	7	7	4	3	6	5	1	52	6	10	184	50-99
5	100-299	8	4	4	5	4	1	6	5	5	3	2	4	8	1	2	5	6	11	6	4	4	3	7	108	100-299
1	9 workers or less	7	5	7	7	3	3	4	4	2	6	7	4	4	6	5	7	9	1	5	5	3	3	6	113	9 workers or less
3	30-49	4		11	2	1	3	4	2	3	2	2	3	5	6	8	3	2	6	4	6	1	1	4	83	30-49
6	300 workers or more		2	1	1	1			3	7	2	1	2	5	1	2	1	2	1	2			2	1	37	300 workers or more
	total	33	18	36	42	19	15	36	30	24	21	25	23	30	28	34	24	28	29	27	20	63	19	41	665	total

Transition of fatal and non-fatal accidents in months in code no. 100101 movie production and delivery service (1999-2021)



[illegible]

10	Gunma																		1						1	Gunma
16	Toyama								1																1	Toyama
28	Hyogo																						1		1	Hyogo
30	Wakayama	1																							1	Wakayama
32	Shimane																	1							1	Shimane
36	Tokushima	1																							1	Tokushima
39	Kochi															1									1	Kochi
7	Fukushima																									Fukushima
8	Ibaraki																									Ibaraki
9	Tochigi																									Tochigi
18	Fukui																									Fukui
19	Yamanashi																									Yamanashi
24	Mie																									Mie
29	Nara																									Nara
31	Tottori																									Tottori
35	Yamaguchi																									Yamaguchi
44	Oita																									Oita
46	Kagoshima																									Kagoshima
	total	33	18	36		19		36	30	24	21	25	23	30	28	34	24	28	29	27	20	63	19	41	608	total

Data source : <https://anzeninfo.mhlw.go.jp/user/anzen/tok/anst00.htm>

Return to [https://www.jisha.or.jp/english/statistics/202211\\_23.html](https://www.jisha.or.jp/english/statistics/202211_23.html)