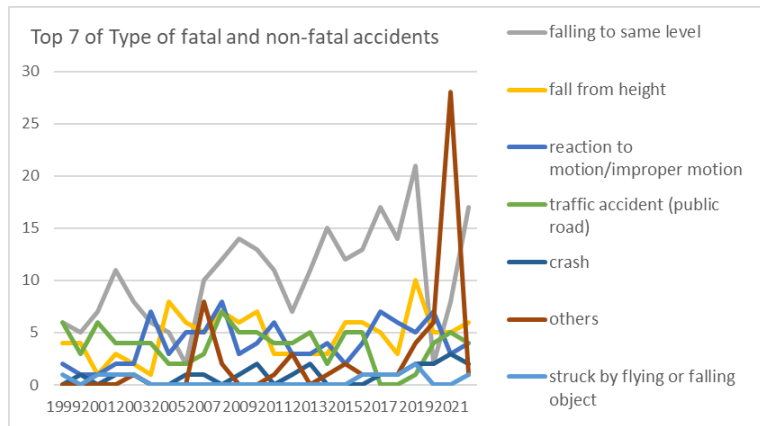
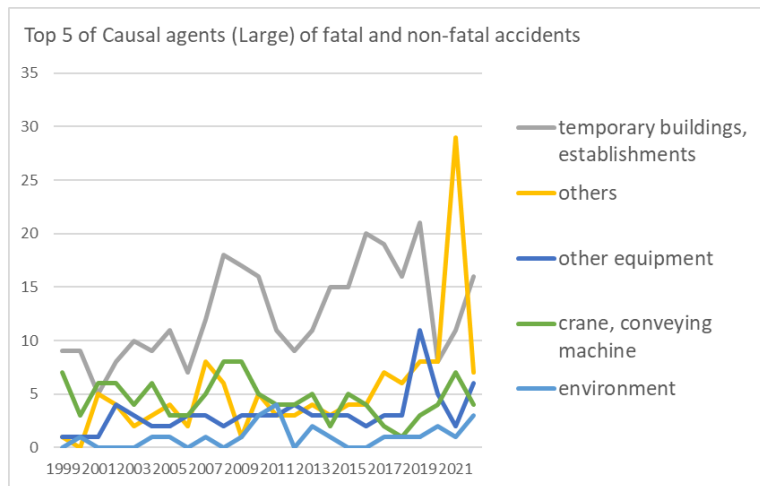


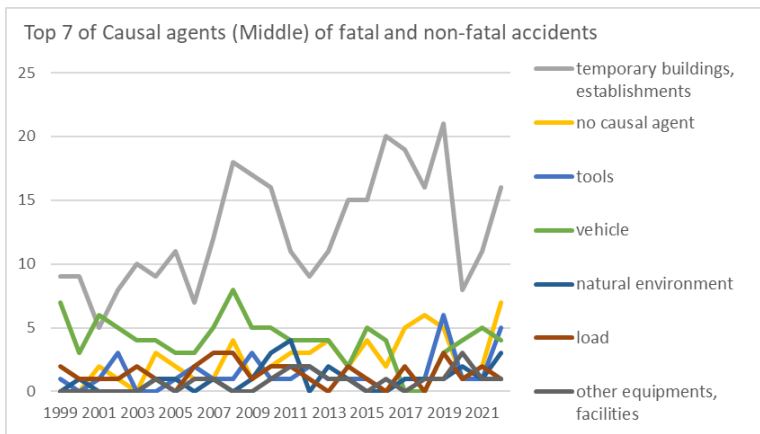
Transition of fatal and non-fatal accidents in 120102 software service in Japan (1999-2022)



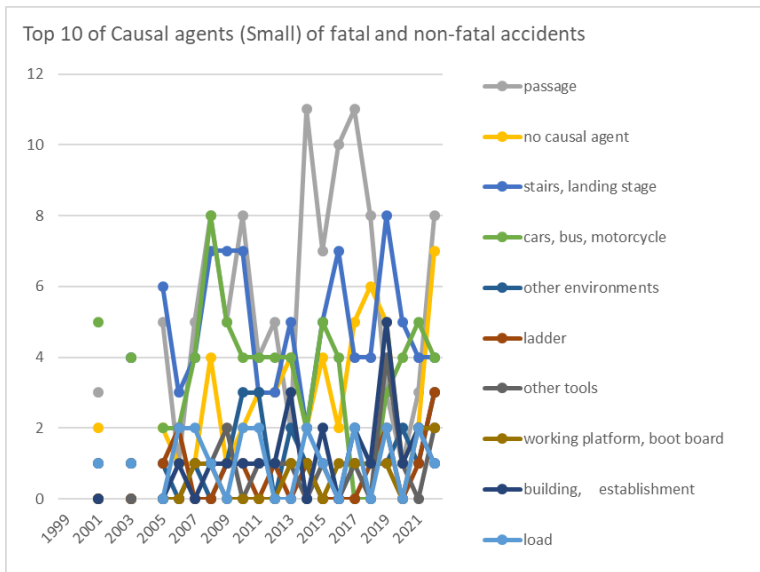
Transition of Top 7 of Type of fatal and non-fatal accidents in 120102 software service in Japan (1999-2022)



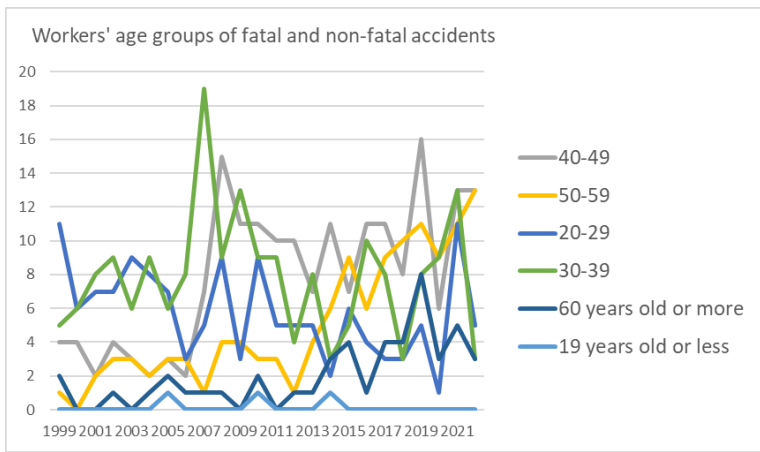
Transition of Top 5 of Causal agents (Large) of fatal and non-fatal accidents in 120102 software service in Japan (1999-2022)



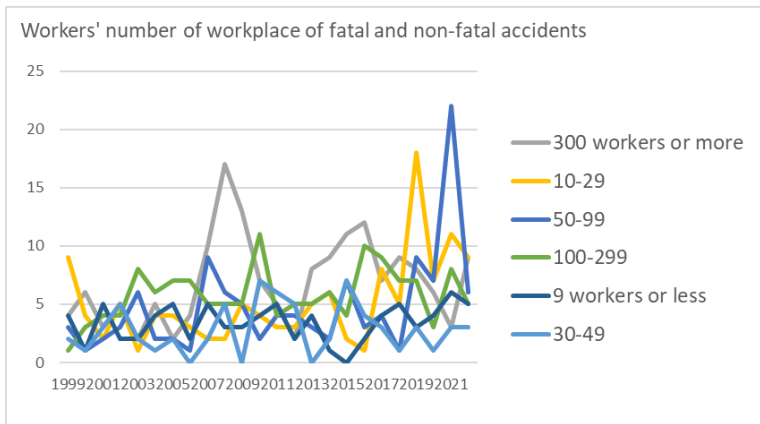
Transition of Top 7 of Causal agents (Middle) of fatal and non-fatal accidents in 120102 software service in Japan (1999-2022)



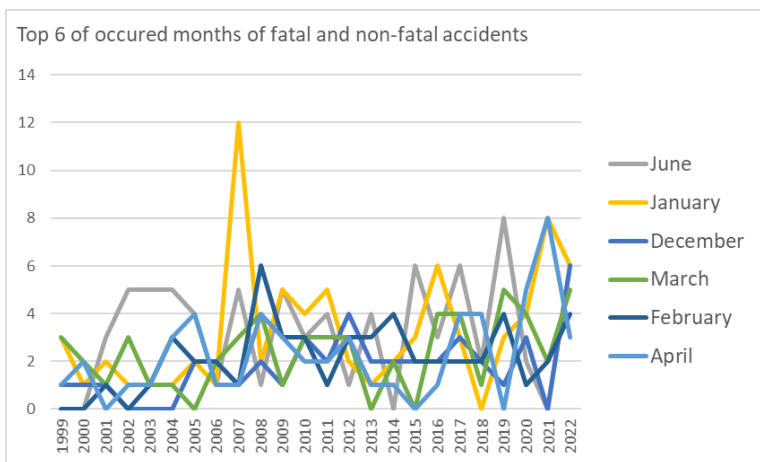
Transition of Top 10 of Causal agents (Small) of fatal and non-fatal accidents in 120102 software service in Japan (1999-2022)



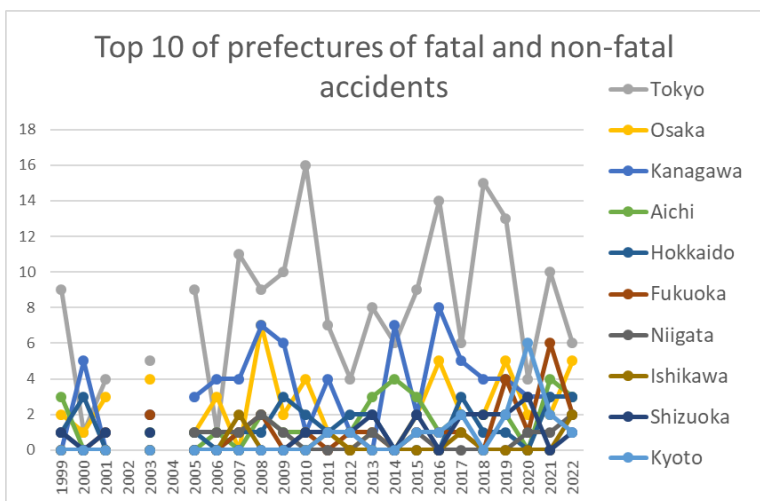
Transition of workers' age groups of fatal and non-fatal accidents in 120102 software service in Japan (1999-2022)



Transition of workers' number of workplace of fatal and non-fatal accidents in 120102 software service in Japan (1999-2022)



Transition of Top 6 of occurred months of fatal and non-fatal accidents in 120102 software service in Japan (1999-2022)



Transition of Top 10 of prefectures of fatal and non-fatal accidents in 120102 software service in Japan (1999-2022)

Transition of Type of fatal and non-fatal accidents in 120102 software service in Japan (1999-2022)

Type of accidents	1999	2000	2001	2002	2003	2004	2005	2006	2007	2008	2009	2010	2011	2012	2013	2014	2015	2016	2017	2018	2019	2020	2021	2022	total	Type of accidents
falling to same level	6	5	7	11	8	6	5	2	10	12	14	13	11	7	11	15	12	13	17	14	21	2	8	17	247	falling to same level
fall from height	4	4	1	3	2	1	8	6	5	7	6	7	3	3	3	3	6	6	5	3	10	5	5	6	112	fall from height

reaction to motion/improper motion	2	1	1	2	2	7	3	5	5	8	3	4	6	3	3	4	2	4	7	6	5	7	3	4	97	reaction to motion/improper motion
traffic accident (public road)	6	3	6	4	4	4	2	2	3	7	5	5	4	4	5	2	5	5			1	4	5	4	90	traffic accident (public road)
crash		1		1	1			1	1		1	2		1	2				1	1	2	2	3	2	22	crash
others					1				8	2			1	3		1	2	1	1	1	4	6	28	1	60	others
struck by flying or falling object	1		1	1	1													1	1	1	2			1	10	struck by flying or falling object
crashed by	1		1	2					1			1							1	1				1	9	crashed by
collapse						1				1			1									1		1	5	collapse
caught in/between	1		1		1	1	1					2	2	1		1			1	1			1		15	caught in/between
cut		2				1											2		1	1	1	1			9	cut
unclassifiable			1		1	1	2	1										1							7	unclassifiable
contact to high/low-temperature													1				1								2	contact to high/low-temperature
contact to harmful substance																		1				1			2	contact to harmful substance
fire	2																								2	fire
traffic accident (others)							1			1															2	traffic accident (others)
electric shock																	1								1	electric shock

Transition of Causal agents (Middle) of fatal and non-fatal accidents in 120102 software service in Japan (1999-2022)

Causal (M) agents	1999	2000	2001	2002	2003	2004	2005	2006	2007	2008	2009	2010	2011	2012	2013	2014	2015	2016	2017	2018	2019	2020	2021	2022	total	Causal (M) agents
temporary buildings, establishments	9	9	5	8	10	9	11	7	12	18	17	16	11	9	11	15	15	20	19	16	21	8	11	16	303	temporary buildings, establishments
no causal agent			2	1		3	2	1	1	4	1	2	3	3	4	2	4	2	5	6	5	1	2	7	61	no causal agent
tools	1		1	3			1	2	1	1	3	1	1	2	1	1	1		1	1	6	1	1	5	35	tools
vehicle	7	3	6	5	4	4	3	3	5	8	5	5	4	4	4	2	5	4			3	4	5	4	97	vehicle
natural environment		1				1	1		1		1	3	4		2	1			1	1	1	2	1	3	24	natural environment
load	2	1	1	1	2	1		2	3	3	1	2	2	1		2	1		2		3	1	2	1	34	load
other equipments, facilities						1		1	1			1	2	2	1	1		1		1	1	3	1	1	18	other equipments, facilities
other causal agent	1		3	2	1				7	1		3				1		1	2		3	6	27		58	other causal agent
human power machine, tools		1		1	3	1				1		1			1	1	1	1	2	1	3	1			19	human power machine, tools
conveying machine				1		1					3								2	1			2		10	conveying machine
unclassifiable				1	1		2	1		1								1				1			8	unclassifiable
materials		1								1								2	1	1					6	materials

