

Brief Country Background



- **Area:** 38,394 sq kms
- **Population:** 792,382
- **Currency:** Ngultrum (Nu.)
- **Language:** Dzongkha
- **Seasons:** Four seasons
- **Capital:** Thimphu
- **Transport System:** Land and Air

Preaented By:-

Amber Bdr Pradhan, Assistant Engineer BCTA.

Introduction

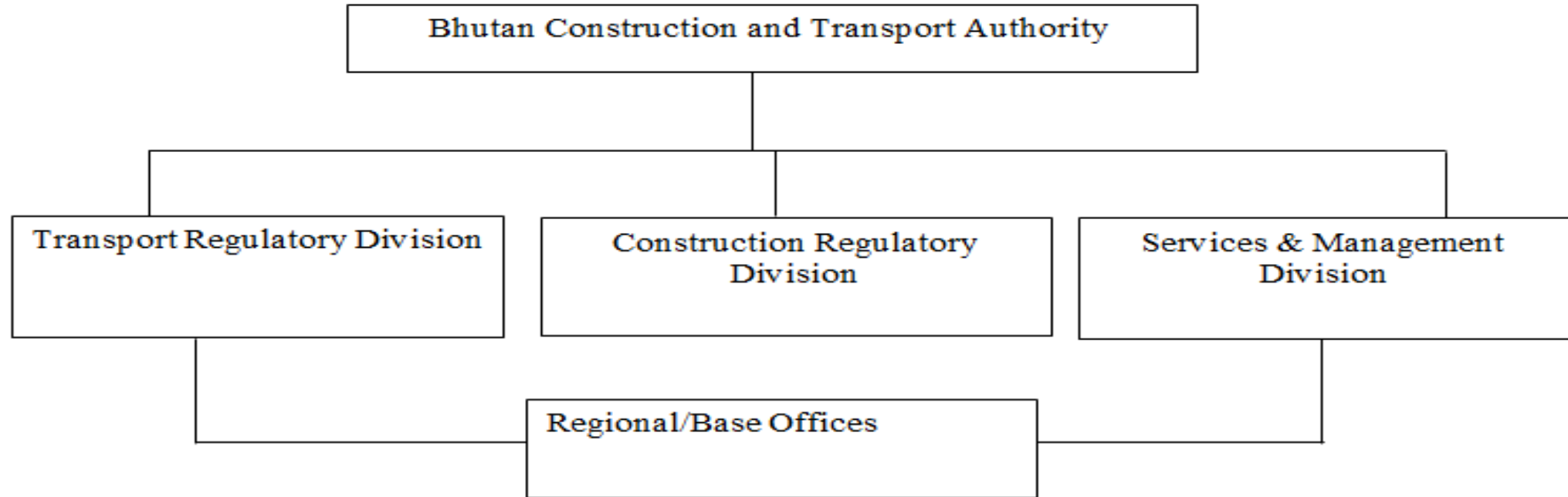
- Construction Development Board (CDB)/BCTA, was established in 1987 as an independent interagency representative organization of the Royal Government of Bhutan with mandate to act as promoter and overseer of the construction industry and to develop an efficient & quality based construction industry.

Objective

- To ensure all Construction and Consultancy firms equal and fair access to award of work;
- To ensure deployment of the committed resources in the contract document at the construction site; and
- To ensure implementation of best construction practices and project management.

BCTA, Structure and mandates.

Structure and Mandates



BCTA-Mandate

- Develop Rules and Regulations for regulating construction and spatial plan
- Third party regulatory enforcement for construction (including roads/bridges) and spatial plan
- Undertake regulatory oversight on construction (including roads/bridges) and spatial plans
- Develop and Enforce safety standards for all construction (Those not covered under the technical standard developed by agencies)
- Develop and Enforce professional standards in construction sector
- Develop and Enforce safety strategies and guidelines for construction
- Develop professionalism in the construction sector (Including induction, refresher courses, etc)
- Develop and implement safety advocacies for construction sector
- Ensure implementation of best construction practice in a professional way.(formal CDB mandates)

Outline of presentation

1. Brief of OHS in Bhutan
2. Training - Construction safety supervisor
3. OHS Implementation at Construction sites
4. Issue & challenges

OHS in Bhutan

- Drafted in 2011 by an Indian Consultant with the financial support of WHO.
- Drafted in consultation with the government, employer and employee(tri-partite principle)
- Officially launched on 28th April 2012 coinciding with World Safety Day.

- **Purpose**

Is to establish standards on occupational health, safety and welfare in all workplace

- **Scope**

This regulation shall apply to all sites where one or more persons are employed falling within the scope of the Labour and Employment Act, 2007.

- **Enforcement**

This regulation shall come into force with effect from May 1, 2012

Training to Construction safety supervisor

- **Topic are:**
 1. Definition of OHS.
 2. Types of workplace Hazards.
 3. Construction safety hazards and control.
 4. Safety signage and PPE.
 5. Occupational health hazards and adverse health effects.
 6. Unsafe condition and acts.
 7. Safety and Health inspection.

OHS In charge

Tier of Importance	Position	Qualification/Experience	Score
Tier – I	Project Manager	<ul style="list-style-type: none">o BE Civil Engineer with 10+ years of experienceo BE Civil Engineer with 5-10 years of experienceo BE Civil Engineer with less than 5 years of experienceo Fresh Graduate Engineer with BE civilo Any other level of qualification or experience	<ul style="list-style-type: none">o 40o 30o 20o 10o 0
Tier – II	Project Engineer	<ul style="list-style-type: none">o BE Civil Engineer with more than 5 years' experienceo Diploma Engineer with more than 5 years' experienceo Diploma Engineer with less than 5 years of experienceo Any other level of qualification or experience	<ul style="list-style-type: none">o 30o 20o 10o 0
Tier – III	Site Supervisor	<ul style="list-style-type: none">o Diploma Engineer with 3+years of experienceo Personnel with formal training certification from TTI at least 5 years of experienceo Fresh TTI Graduateo Any other level of qualification or experience	<ul style="list-style-type: none">o 20o 15o 10o 0
Tier- IV	Fresh Diploma/ Graduate Engineer	<ul style="list-style-type: none">o Fresh Graduate/Diploma Engineer trained and certified in CMS, OHS, e-GP & BCTA refresher courseso Any other level of qualification or experience	<ul style="list-style-type: none">o 10o 0

OHS Implementation at Construction sites

➤ Site management.

1. Site office set up
2. Store.
3. Installation of project signboard.
4. Worker accommodation.
5. Access to Portable water.
6. Proper sanitation Facilities.



7. OHS incharge
8. Safety signage
9. Fire Extinguishing
10. First Aid Box
11. Peripheral boundary
12. Proper installation of electricity



Basic PPE At construction sites

1. Safety helmet
2. Safety boot
3. Reflective vest
4. Goggles
5. Welding mask
6. Dusk mask
7. Safety harness/belt
8. Safety gloves
9. Ear plug/muf



Issue & challenges

- Lack of awarness & advocacy on OHS.
- Timely monitor.
- No trained OHS officer avialable.
- No Avialable resources.
- Not given prior to OHS.
- Enforcement of law & Act.

Good Practice

- Due monitoring & advocacy at sites, the basic PPE are wearing at site.
- Frequently sites need to be monitored.
- BCTA monitored the sites and share the report with Client, Department of Labour and RAA.

Thank You