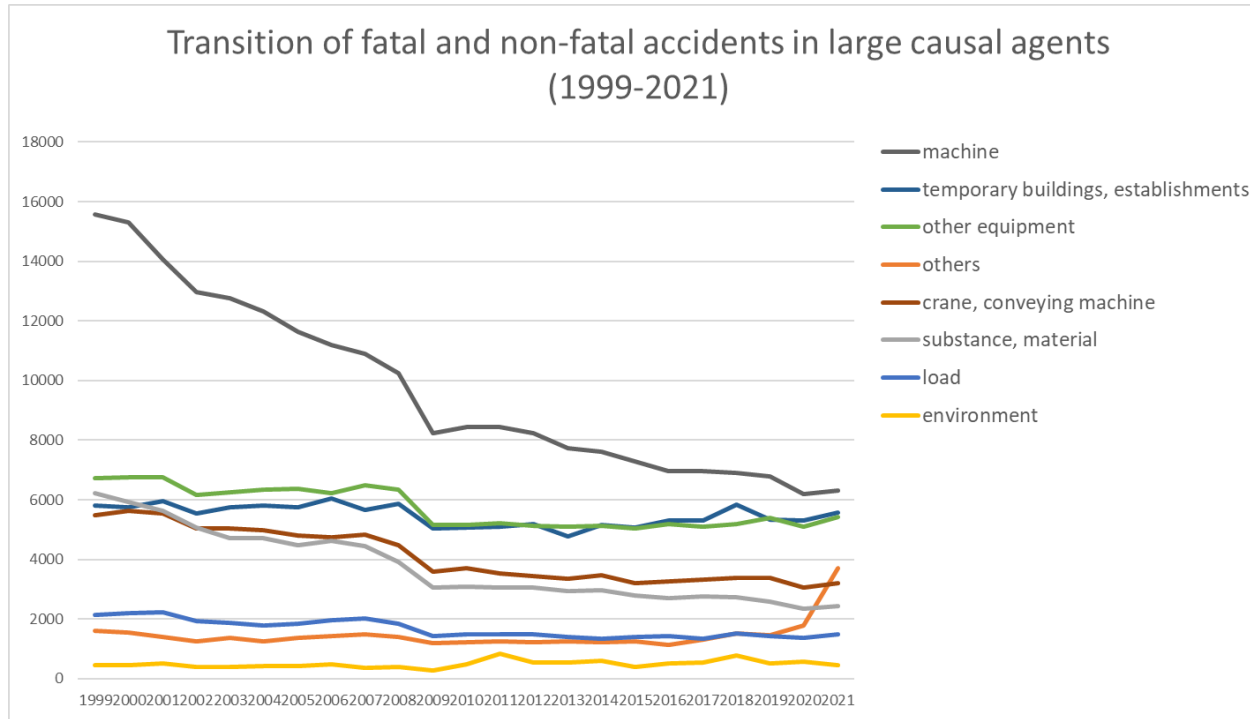
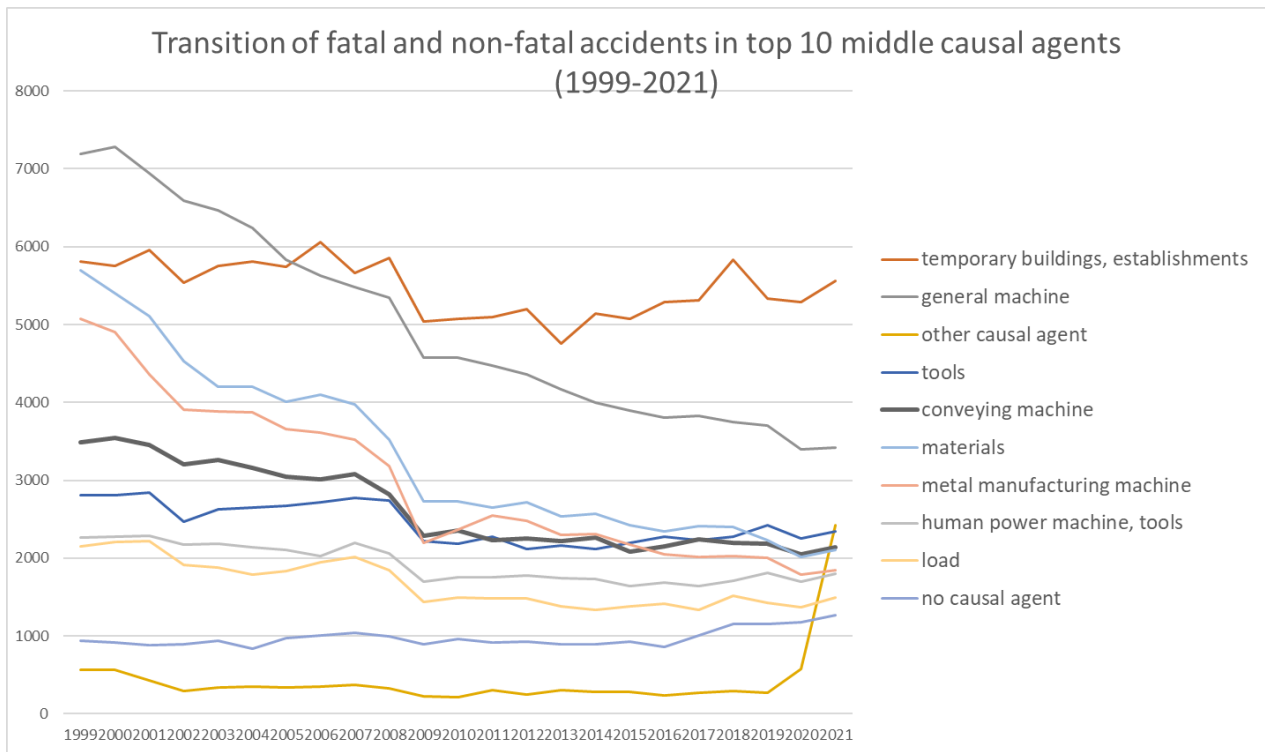


Transition of fatal and non-fatal accidents in each element like as causal agents, type of accidents, etc. in code no. 01 manufacturing (1999-2021)

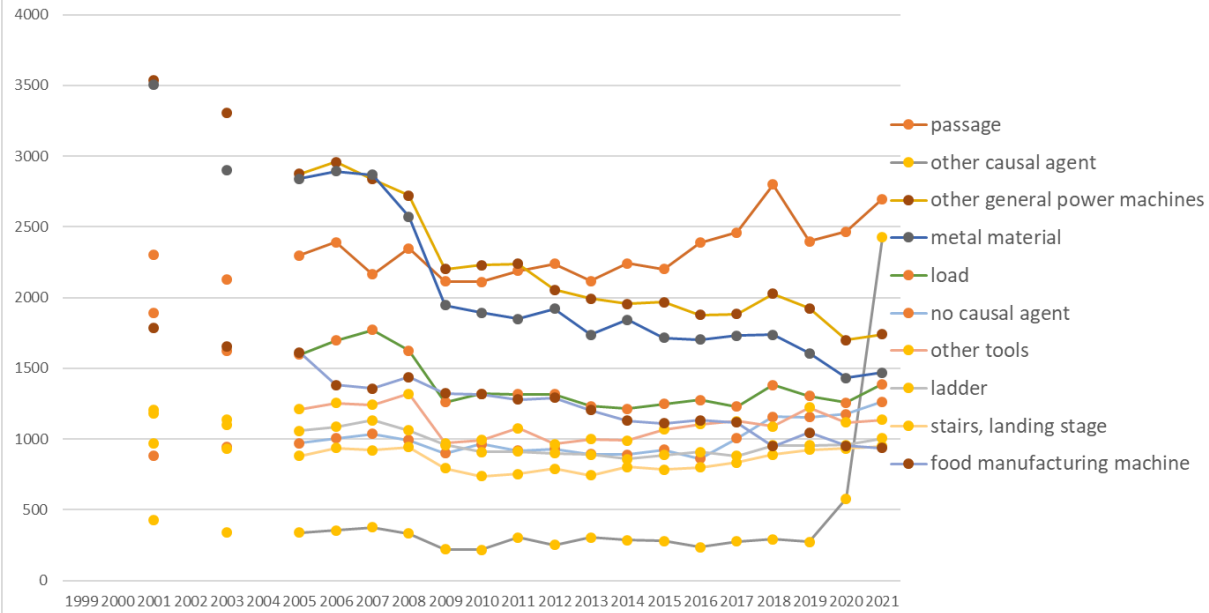


Transition of fatal and non-fatal accidents in large causal agents in code no. 01 manufacturing (1999-2021)



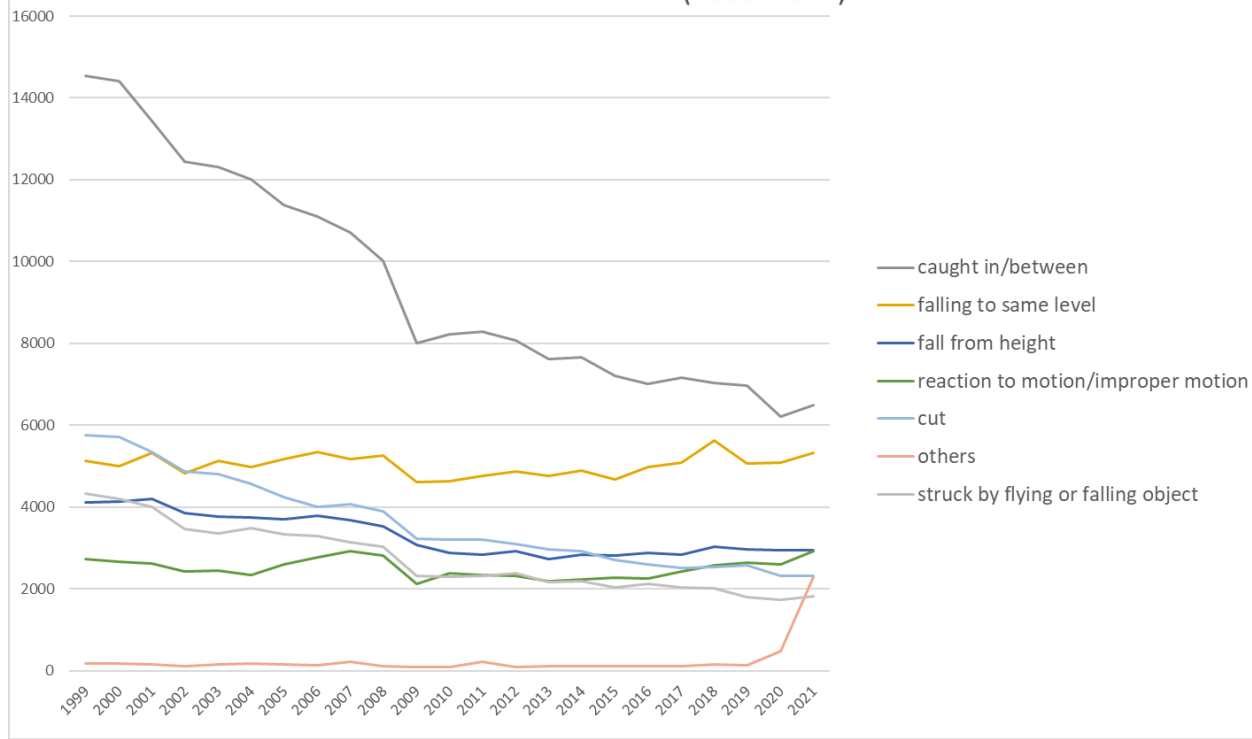
Transition of fatal and non-fatal accidents in middle causal agents in code no. 01 manufacturing (1999-2021)

Transition of fatal and non-fatal accidents in top 10 small causal agents
(1999-2021)



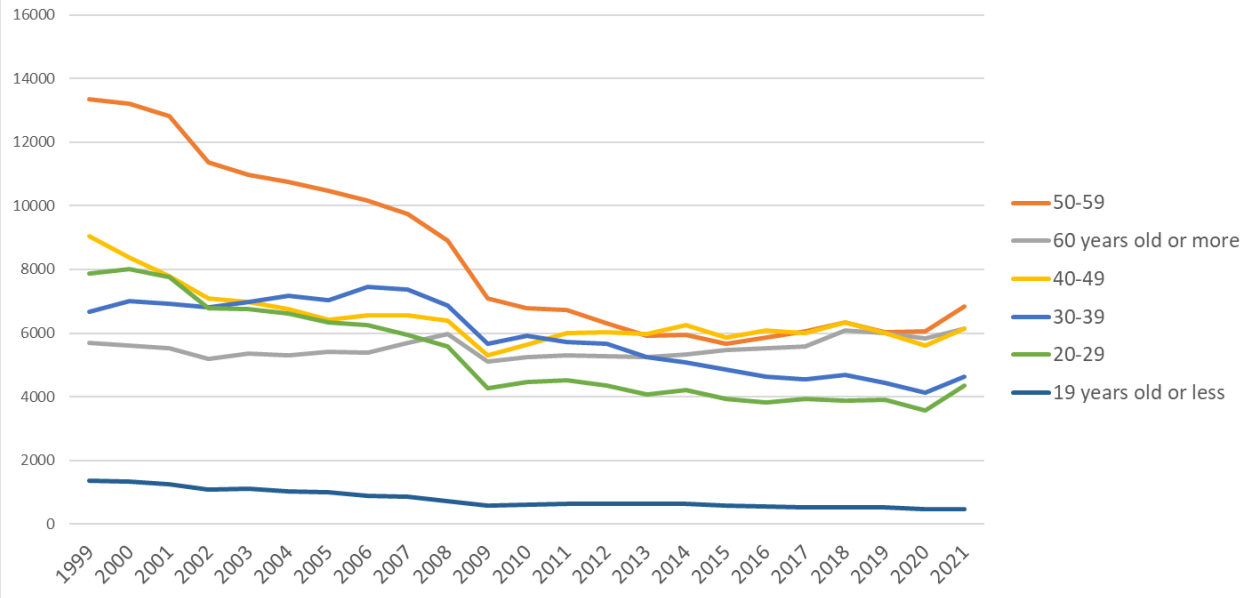
Transition of fatal and non-fatal accidents in small causal agents in code no. 01 manufacturing (1999-2021)

Transition of fatal and non-fatal accidents in top 7 type of accidents
(1999-2021)



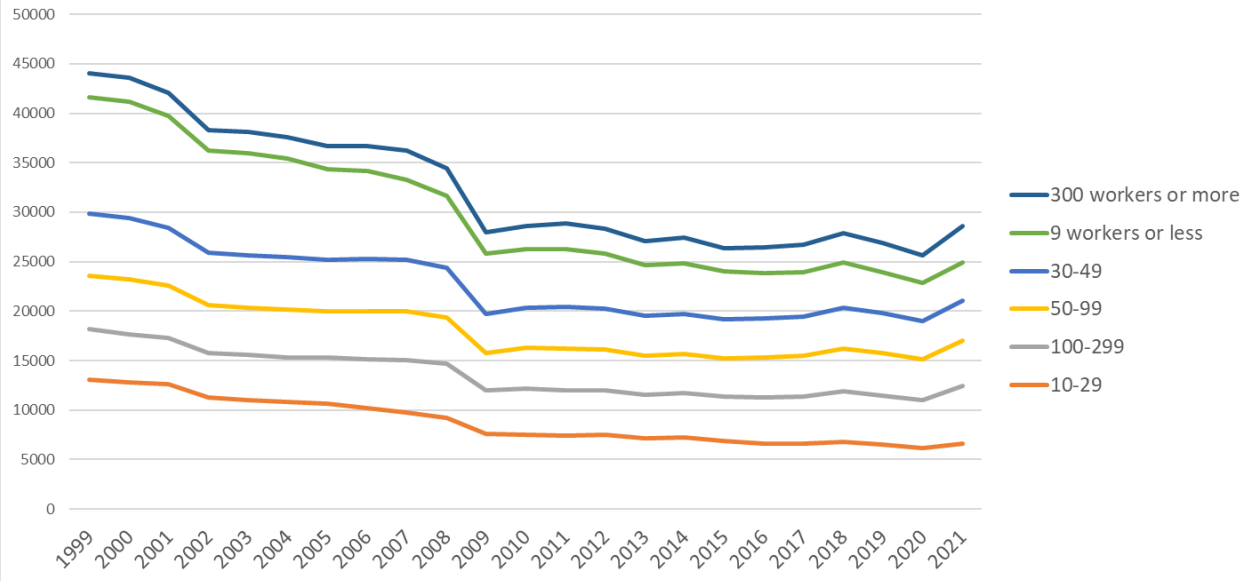
Transition of fatal and non-fatal accidents in type of accidents in code no. 01 manufacturing (1999-2021)

Transition of fatal and non-fatal accidents in workers ages (1999-2021)



Transition of fatal and non-fatal accidents in workers ages in code no. 01 manufacturing (1999-2021)

Transition of fatal and non-fatal accidents in workers scales (1999-2021)



Transition of fatal and non-fatal accidents in workers scales in code no. 01 manufacturing (1999-2021)

code	Age	1999	2000	2001	2002	2003	2004	2005	2006	2007	2008	2009	2010	2011	2012	2013	2014	2015	2016	2017	2018	2019	2020	2021	total	Age
5	50-59	13,347	13,202	12,808	11,363	10,966	10,737	10,479	10,157	9,757	8,903	7,087	6,788	6,713	6,318	5,913	5,958	5,660	5,852	6,055	6,323	6,020	6,054	6,849	193,309	50-59
6	60 years old or more	5,706	5,608	5,525	5,188	5,356	5,296	5,414	5,380	5,687	5,973	5,093	5,245	5,312	5,272	5,252	5,317	5,467	5,516	5,591	6,096	6,007	5,827	6,153	127,281	60 years old or more
4	40-49	9,046	8,386	7,794	7,102	6,974	6,747	6,423	6,550	6,568	6,398	5,300	5,634	5,991	6,039	5,965	6,242	5,870	6,088	6,012	6,328	6,003	5,605	6,146	149,211	40-49
3	30-39	6,658	7,013	6,931	6,801	6,990	7,168	7,036	7,465	7,365	6,869	5,666	5,930	5,713	5,677	5,241	5,068	4,865	4,639	4,540	4,695	4,429	4,129	4,639	135,527	30-39
2	20-29	7,883	8,003	7,773	6,778	6,745	6,619	6,332	6,240	5,947	5,590	4,261	4,452	4,519	4,344	4,059	4,225	3,944	3,814	3,946	3,880	3,891	3,583	4,353	121,181	20-29
1	19 years old or less	1,358	1,341	1,237	1,091	1,114	1,026	1,010	878	872	731	588	594	624	641	647	642	585	545	530	520	523	477	465	18,039	19 years old or less
	total	43,998	43,553	42,068	38,323	38,145	37,593	36,694	36,670	36,196	34,464	27,995	28,643	28,872	28,291	27,077	27,452	26,391	26,454	26,674	27,842	26,873	25,675	28,605	744,548	total

Transition of fatal and non-fatal accidents in workers scales in code no. 01 manufacturing (1999-2021)

code	Workers scale	1999	2000	2001	2002	2003	2004	2005	2006	2007	2008	2009	2010	2011	2012	2013	2014	2015	2016	2017	2018	2019	2020	2021	total	Workers scale
2	10-29	13,095	12,791	12,633	11,311	11,034	10,866	10,619	10,200	9,724	9,250	7,615	7,516	7,461	7,516	7,114	7,209	6,853	6,610	6,604	6,745	6,498	6,196	6,638	202,098	10-29
5	100-299	5,056	4,896	4,680	4,483	4,511	4,495	4,691	4,920	5,328	5,402	4,352	4,639	4,563	4,510	4,421	4,500	4,543	4,691	4,773	5,148	4,974	4,821	5,837	110,234	100-299
4	50-99	5,463	5,486	5,251	4,789	4,785	4,838	4,655	4,874	4,895	4,697	3,756	4,114	4,199	4,110	3,943	3,991	3,842	4,027	4,106	4,325	4,294	4,162	4,503	103,105	50-99
3	30-49	6,252	6,265	5,845	5,330	5,316	5,217	5,208	5,326	5,282	5,065	3,968	4,059	4,167	4,117	4,017	4,053	3,956	3,952	3,988	4,169	4,023	3,812	4,094	107,481	30-49
1	9 workers or less	11,796	11,748	11,325	10,331	10,349	9,994	9,163	8,863	8,058	7,236	6,163	5,906	5,920	5,539	5,197	5,112	4,800	4,582	4,450	4,542	4,155	3,832	3,840	162,901	9 workers or less
6	300 workers or more	2,336	2,367	2,334	2,079	2,150	2,183	2,358	2,487	2,909	2,814	2,141	2,409	2,562	2,499	2,385	2,587	2,397	2,592	2,753	2,913	2,929	2,852	3,693	58,729	300 workers or more
	total	43,998	43,553	42,068	38,323	38,145	37,593	36,694	36,670	36,196	34,464	27,995	28,643	28,872	28,291	27,077	27,452	26,391	26,454	26,674	27,842	26,873	25,675	28,605	744,548	total

Transition of fatal and non-fatal accidents in months in code no. 01 manufacturing (1999-2021)

code	Month	1999	2000	2001	2002	2003	2004	2005	2006	2007	2008	2009	2010	2011	2012	2013	2014	2015	2016	2017	2018	2019	2020	2021	total	Month
8	August	3,611	3,647	3,355	3,078	3,119	3,011	3,197	3,118	3,133	2,667	2,236	2,410	2,397	2,430	2,209	2,195	2,074	2,206	2,265	2,277	2,199	2,133	2,826	61,793	August
9	September	3,916	3,755	3,370	3,269	3,323	3,275	3,133	3,080	2,918	2,905	2,348	2,505	2,507	2,280	2,239	2,383	2,166	2,240	2,200	2,183	2,291	2,097	2,508	62,891	September
1	January	3,466	3,314	3,547	3,035	3,134	3,100	2,945	3,074	2,900	2,900	2,591	2,343	2,424	2,402	2,237	2,290	2,252	2,341	2,209	2,509	2,251	2,216	2,456	61,936	January
7	July	3,940	3,754	3,758	3,600	3,386	3,421	3,236	3,145	3,259	3,178	2,462	2,586	2,449	2,451	2,505	2,438	2,463	2,249	2,326	2,607	2,572	2,216	2,422	66,423	July

3	March	3,849	3,842	3,869	3,254	3,264	3,414	3,314	3,146	3,182	2,982	2,398	2,451	2,813	2,477	2,256	2,266	2,317	2,246	2,353	2,355	2,242	2,134	2,416	64,840	March
4	April	3,535	3,382	3,508	3,215	3,118	3,111	2,920	2,968	2,974	2,898	2,378	2,283	2,201	2,257	2,193	2,182	2,124	2,209	2,071	2,098	2,102	2,054	2,409	60,190	April
6	June	3,832	3,730	3,664	3,053	3,341	3,372	3,227	3,084	3,097	2,885	2,290	2,549	2,525	2,412	2,158	2,297	2,374	2,246	2,315	2,390	2,266	2,239	2,393	63,739	June
5	May	3,557	3,529	3,543	3,288	3,201	2,903	2,865	2,982	3,080	2,850	2,154	2,204	2,193	2,284	2,218	2,273	2,090	2,046	2,123	2,229	2,154	1,839	2,276	59,881	May
10	October	3,659	3,823	3,620	3,514	3,358	3,323	3,076	3,149	3,167	2,986	2,406	2,431	2,418	2,284	2,462	2,380	2,302	2,206	2,310	2,479	2,299	2,297	2,269	64,218	October
2	February	3,777	3,878	3,508	2,981	3,121	2,883	3,029	3,118	2,938	3,171	2,269	2,321	2,250	2,647	2,163	2,457	2,104	2,269	2,212	2,340	2,234	2,194	2,230	62,094	February
11	November	3,498	3,511	3,241	3,219	2,921	2,950	2,961	3,017	2,849	2,619	2,254	2,383	2,376	2,235	2,335	2,145	2,114	2,197	2,179	2,286	2,194	2,011	2,218	59,713	November
12	December	3,358	3,388	3,085	2,817	2,859	2,830	2,791	2,789	2,699	2,423	2,209	2,177	2,319	2,132	2,102	2,146	2,011	1,999	2,111	2,089	2,069	2,245	2,182	56,830	December
	total	43,998	43,553	42,068	38,323	38,145	37,593	36,694	36,670	36,196	34,464	27,995	28,643	28,872	28,291	27,077	27,452	26,391	26,454	26,674	27,842	26,873	25,675	28,605	744,548	total

Transition of fatal and non-fatal accidents in prefectures in code no. 01 manufacturing (1999-2021)

code	Prefecture	1999	2000	2001	2002	2003	2004	2005	2006	2007	2008	2009	2010	2011	2012	2013	2014	2015	2016	2017	2018	2019	2020	2021	total	Prefecture
23	Aichi	3,372	3,313	3,216		2,903		2,791	2,743	2,705	2,429	1,974	2,119	2,120	2,060	2,037	2,027	1,902	1,904	1,938	1,986	1,895	1,889	2,021	49,344	Aichi
27	Osaka	3,582	3,645	3,516		3,069		2,834	2,985	2,828	2,588	2,168	2,206	2,132	2,076	1,900	1,915	1,857	1,798	1,854	1,885	1,779	1,591	1,844	50,052	Osaka
11	Saitama	1,950	1,961	1,987		2,004		1,946	1,891	1,942	1,862	1,525	1,526	1,406	1,486	1,383	1,504	1,401	1,407	1,396	1,427	1,464	1,366	1,620	34,454	Saitama
22	Shizuoka	2,252	2,240	2,106		1,942		1,810	1,857	1,919	1,769	1,321	1,387	1,413	1,399	1,227	1,342	1,391	1,310	1,327	1,434	1,429	1,267	1,383	33,525	Shizuoka
1	Hokkaido	1,955	2,088	1,988		1,739		1,648	1,624	1,634	1,464	1,309	1,284	1,238	1,188	1,231	1,160	1,187	1,227	1,202	1,202	1,104	1,144	1,217	29,833	Hokkaido
28	Hyogo	1,927	2,005	1,837		1,798		1,672	1,660	1,620	1,590	1,300	1,322	1,339	1,271	1,176	1,162	1,169	1,132	1,159	1,209	1,182	1,119	1,189	29,838	Hyogo
14	Kanagawa	1,727	1,710	1,595		1,468		1,523	1,494	1,373	1,367	1,103	1,169	1,122	1,126	1,035	1,076	1,005	1,012	1,022	1,044	1,061	924	1,109	26,065	Kanagawa
12	Chiba	1,399	1,372	1,331		1,163		1,102	1,205	1,196	1,165	1,097	1,077	985	1,043	976	971	1,006	969	904	1,012	905	910	1,074	22,862	Chiba
40	Fukuoka	1,532	1,579	1,501		1,388		1,326	1,242	1,330	1,274	1,095	1,011	1,057	971	1,016	963	968	959	947	1,028	962	946	980	24,075	Fukuoka
34	Hiroshima	1,375	1,372	1,358		1,217		1,256	1,183	1,142	1,120	837	861	863	908	822	859	769	845	875	893	882	776	908	21,121	Hiroshima
8	Ibaraki	1,099	1,157	1,145		987		961	958	983	972	784	823	847	873	790	838	813	782	850	894	884	833	888	19,161	Ibaraki
21	Gifu	1,249	1,223	1,139		1,026		964	1,021	1,017	926	691	730	716	718	716	701	696	707	673	766	703	700	823	17,905	Gifu
15	Niigata	1,104	1,052	1,070		934		856	943	881	840	663	750	748	706	705	721	676	679	764	723	706	700	810	17,031	Niigata
10	Gunma	1,188	1,133	1,080		989		955	972	949	865	713	730	760	751	727	800	709	772	697	792	729	731	784	17,826	Gunma
24	Mie	1,029	1,037	1,017		900		865	848	935	858	633	703	666	642	618	651	649	590	603	588	653	486	774	15,745	Mie
13	Tokyo	1,652	1,527	1,480		1,350		1,240	1,177	1,105	1,119	897	865	847	810	750	726	696	696	639	735	712	621	674	20,318	Tokyo

33	Okayama	770	739	772		720		710	711	757	686	515	543	578	576	544	577	483	488	583	585	572	693	621	13,223	Okayama
9	Tochigi	798	751	723		707		678	627	603	623	506	498	534	603	537	544	546	569	524	551	548	503	603	12,576	Tochigi
20	Nagano	746	730	703		628		616	676	601	606	461	502	559	522	551	532	549	518	551	558	550	514	574	12,247	Nagano
4	Miyagi	718	689	643		606		614	626	571	607	457	474	661	460	471	452	421	474	473	502	465	464	543	11,391	Miyagi
7	Fukushima	698	720	689		585		603	609	604	562	433	461	498	477	481	452	426	451	420	448	454	414	534	11,019	Fukushima
25	Shiga	530	551	515		591		538	544	535	539	369	388	392	391	462	451	420	414	406	438	397	366	516	9,753	Shiga
26	Kyoto	755	686	735		611		604	613	628	564	502	481	524	477	480	423	466	435	483	458	448	449	471	11,293	Kyoto
43	Kumamoto	596	555	530		513		486	473	524	428	389	369	374	339	369	350	371	358	365	385	393	368	412	8,947	Kumamoto
38	Ehime	776	755	784		683		670	588	607	641	470	493	502	454	434	481	416	441	429	396	412	445	385	11,262	Ehime
46	Kagoshima	545	521	519		434		458	453	390	384	372	347	371	357	356	351	321	382	377	370	385	378	384	8,455	Kagoshima
29	Nara	445	450	473		425		471	397	419	405	355	347	311	333	311	341	321	302	309	331	340	269	365	7,720	Nara
37	Kagawa	621	585	547		514		536	468	497	463	402	383	379	369	345	385	331	314	316	368	352	319	354	8,848	Kagawa
45	Miyazaki	476	419	440		388		368	356	365	343	324	353	324	333	299	268	286	303	276	277	280	302	349	7,129	Miyazaki
16	Toyama	597	571	525		490		452	480	463	424	356	362	368	366	328	359	297	347	332	336	299	309	337	8,398	Toyama
3	Iwate	496	498	508		398		399	376	355	356	280	321	352	308	279	320	298	281	273	298	266	275	324	7,261	Iwate
6	Yamagata	451	428	453		388		364	398	376	355	256	281	308	331	333	299	299	310	282	323	297	287	314	7,133	Yamagata
42	Nagasaki	529	473	463		399		388	429	375	358	348	371	363	356	317	364	323	343	328	327	353	344	309	7,860	Nagasaki
41	Saga	343	349	302		298		301	321	327	352	224	253	293	279	289	243	239	291	314	325	302	318	293	6,256	Saga
35	Yamaguchi	575	544	502		512		458	455	449	429	340	318	303	331	308	301	316	291	290	282	329	328	288	7,949	Yamaguchi
30	Wakayama	486	478	438		429		387	387	401	380	296	308	332	301	295	277	276	241	276	265	226	269	284	7,032	Wakayama
17	Ishikawa	386	406	425		359		396	397	374	400	259	266	307	295	285	299	274	249	319	302	265	256	283	6,802	Ishikawa
2	Aomori	362	312	313		296		267	268	280	262	211	224	251	259	217	254	214	219	243	244	209	231	243	5,379	Aomori
44	Oita	470	471	443		411		340	405	367	371	313	295	265	279	240	258	258	247	244	276	234	245	235	6,667	Oita
5	Akita	357	381	298		241		233	257	256	251	215	200	209	225	208	203	183	193	201	247	219	191	218	4,986	Akita
36	Tokushima	430	394	349		294		320	262	259	239	217	204	207	197	217	176	199	182	206	191	185	170	214	5,112	Tokushima
19	Yamanashi	250	257	246		223		218	249	215	236	171	170	213	190	217	229	167	182	190	210	210	161	206	4,410	Yamanashi
47	Okinawa	177	174	177		159		156	137	152	143	145	151	150	171	170	160	124	167	159	153	168	171	203	3,367	Okinawa
18	Fukui	367	352	357		231		278	288	272	255	227	206	236	252	223	230	217	250	211	306	229	195	199	5,381	Fukui

39	Kochi	392	403	384		360		289	264	264	261	219	229	198	186	163	185	202	193	188	180	187	177	161	5,085	Kochi
32	Shimane	293	285	269		228		218	216	203	201	144	167	147	144	141	158	153	136	161	183	134	142	144	3,867	Shimane
31	Tottori	171	212	177		147		129	137	148	132	109	115	104	102	98	114	101	94	95	109	115	119	141	2,669	Tottori
	total	43,998	43,553	42,068		38,145		36,694	36,670	36,196	34,464	27,995	28,643	28,872	28,291	27,077	27,452	26,391	26,454	26,674	27,842	26,873	25,675	28,605	668,632	total

Data source : <https://anzeninfo.mhlw.go.jp/user/anzen/tok/anst00.htm>

Return to https://www.jisha.or.jp/english/statistics/202211_23.html