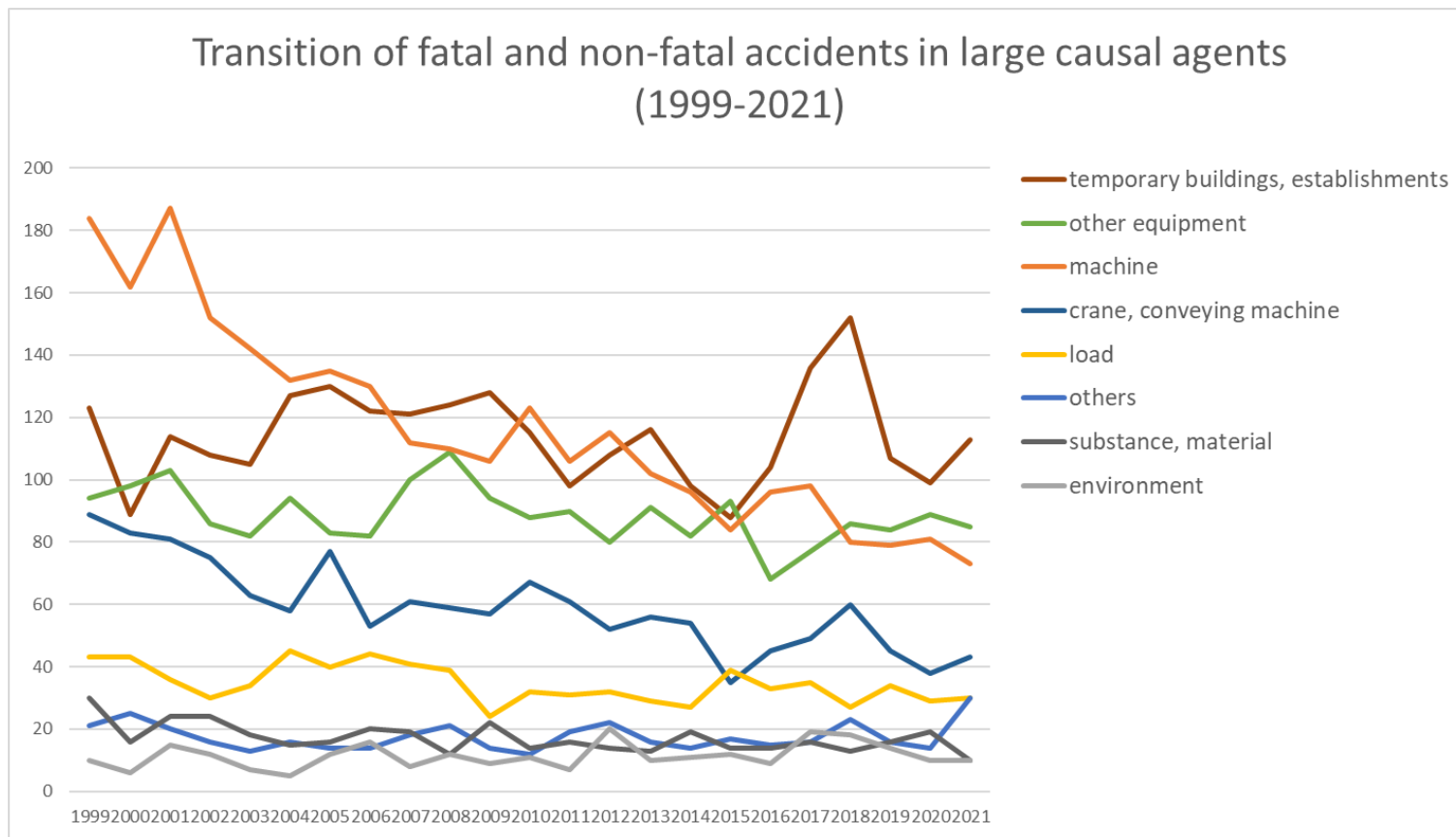
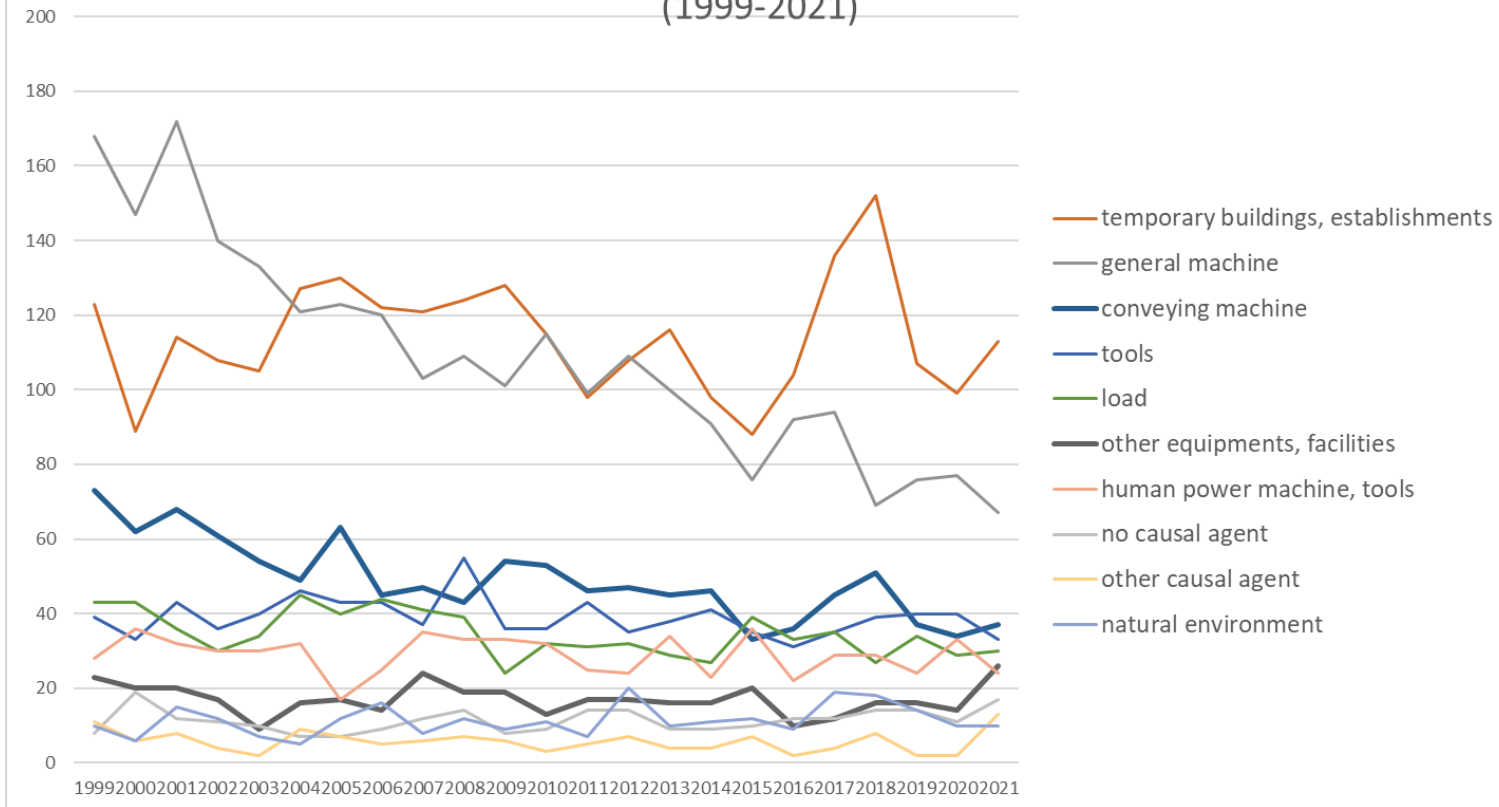


Transition of fatal and non-fatal accidents in each element like as causal agents, type of accidents, etc. in code no. 010103 agricultural food products (1999-2021)



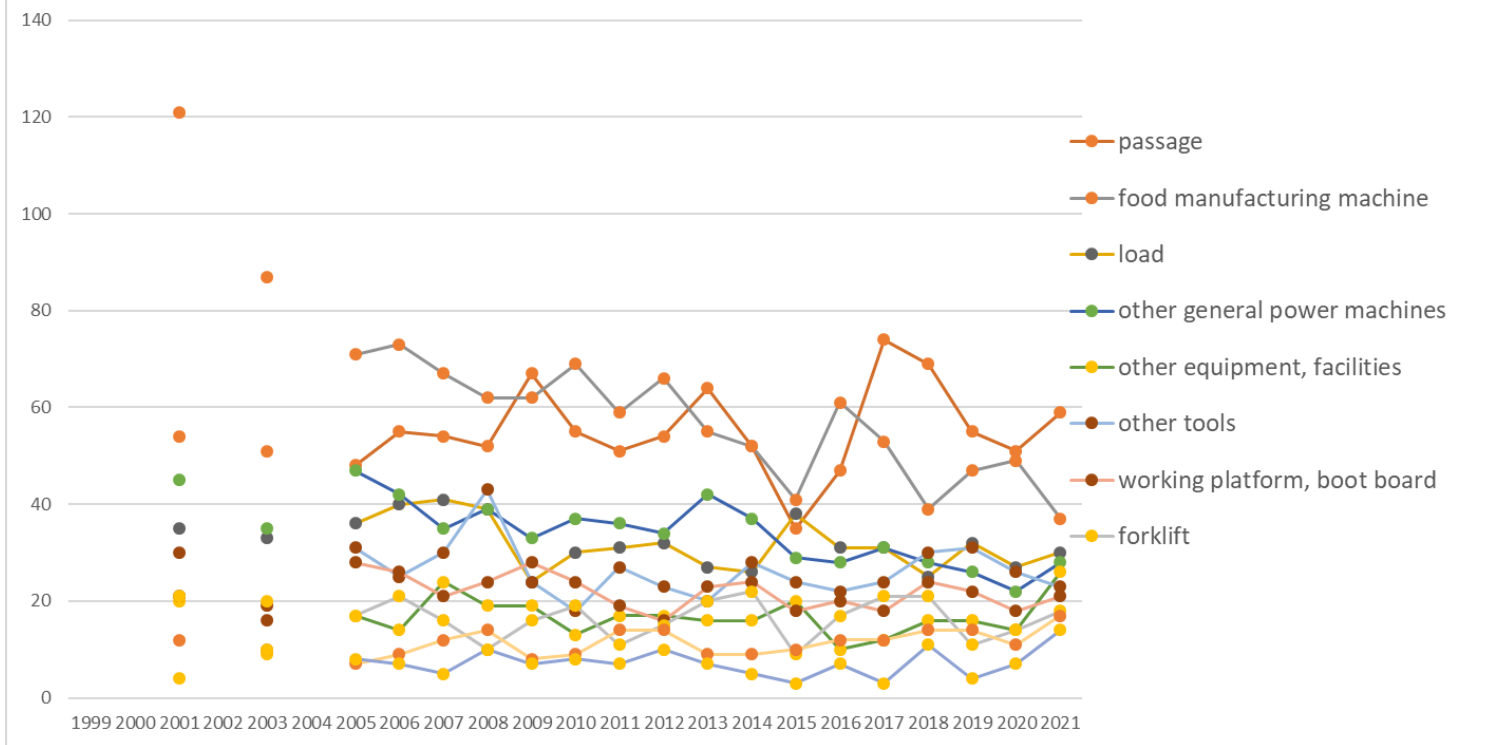
Transition of fatal and non-fatal accidents in large causal agents in code no. 010103 agricultural food products (1999-2021)

### Transition of fatal and non-fatal accidents in top 10 middle causal agents (1999-2021)



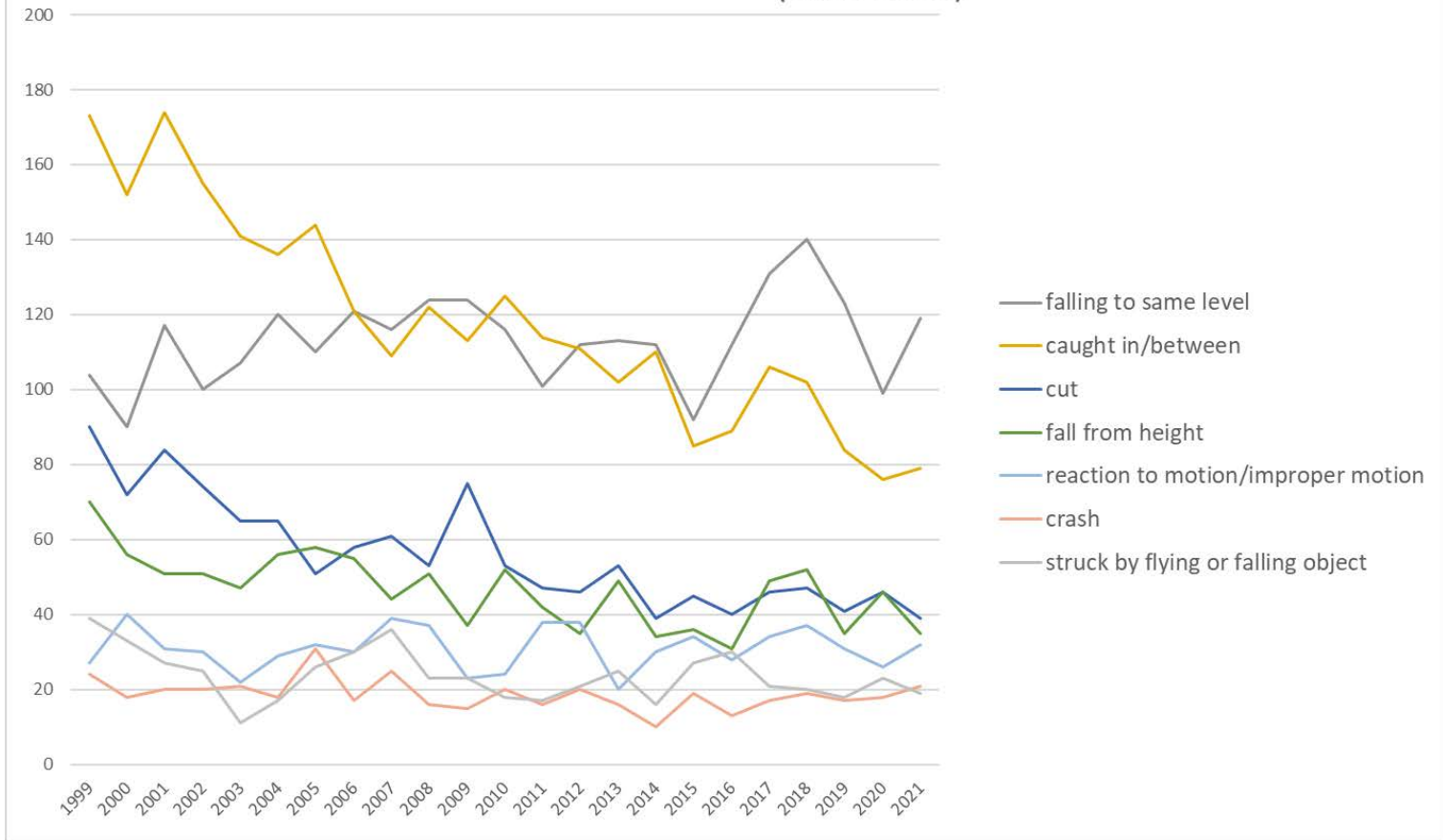
Transition of fatal and non-fatal accidents in middle causal agents in code no. 010103 agricultural food products (1999-2021)

### Transition of fatal and non-fatal accidents in top 10 small causal agents (1999-2021)



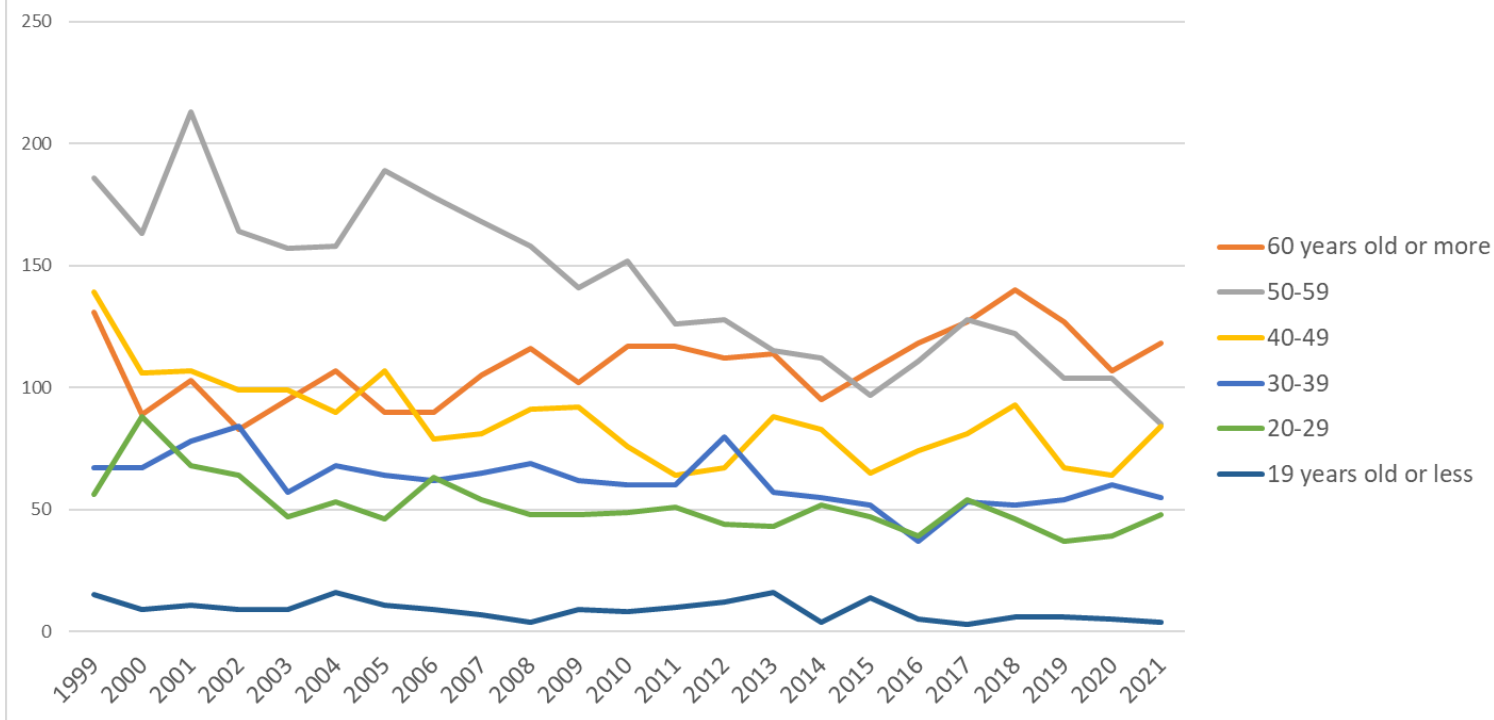
Transition of fatal and non-fatal accidents in small causal agents in code no. 010103 agricultural food products (1999-2021)

Transition of fatal and non-fatal accidents in top 7 type of accidents  
(1999-2021)



Transition of fatal and non-fatal accidents in type of accidents in code no. 010103 agricultural food products (1999-2021)

### Transition of fatal and non-fatal accidents in workers ages (1999-2021)



Transition of fatal and non-fatal accidents in workers ages in code no. 010103 agricultural food products (1999-2021)



































code	Month	1999	2000	2001	2002	2003	2004	2005	2006	2007	2008	2009	2010	2011	2012	2013	2014	2015	2016	2017	2018	2019	2020	2021	total	Month
12	December	49	40	43	52	42	44	44	26	43	55	47	38	42	47	56	37	28	38	46	31	35	38	45	966	December
5	May	58	39	42	39	30	33	44	49	47	43	41	25	31	33	37	29	27	32	40	27	21	34	44	845	May
7	July	52	56	51	32	44	31	53	48	41	37	31	36	32	27	34	39	39	29	32	42	30	31	35	882	July
8	August	46	48	39	42	38	34	46	44	43	35	47	35	32	40	26	29	28	41	40	38	28	39	35	873	August
10	October	45	48	52	59	41	48	56	46	38	39	40	51	35	28	33	27	25	35	32	43	41	32	34	928	October
2	February	40	39	44	40	42	28	36	41	33	47	38	36	31	46	31	33	27	39	31	38	36	29	34	839	February
11	November	48	45	68	45	47	50	34	35	52	36	40	34	31	44	36	30	37	37	41	40	38	25	32	925	November
6	June	52	43	49	40	35	47	37	39	35	37	36	34	42	42	29	28	37	21	35	39	29	29	32	847	June
4	April	35	44	48	44	34	39	43	35	28	40	29	44	35	29	39	38	37	29	35	33	32	35	29	834	April
3	March	61	30	56	35	40	57	43	38	49	37	25	49	33	31	34	30	40	29	41	34	32	26	28	878	March
1	January	57	37	38	42	32	36	35	44	38	37	42	35	41	44	44	34	33	32	37	54	34	28	27	881	January
9	September	51	53	50	33	39	45	36	36	33	43	38	45	43	32	34	47	24	22	36	40	39	33	19	871	September
	total	594	522	580	503	464	492	507	481	480	486	454	462	428	443	433	401	382	384	446	459	395	379	394	10,569	total

Transition of fatal and non-fatal accidents in prefectures in code no. 010103 agricultural food products (1999-2021)

code	Prefecture	1999	2000	2001	2002	2003	2004	2005	2006	2007	2008	2009	2010	2011	2012	2013	2014	2015	2016	2017	2018	2019	2020	2021	total	Prefecture
1	Hokkaido	77	54	69		52		89	64	62	51	56	45	57	41	43	48	54	40	54	61	57	50	36	1,160	Hokkaido
20	Nagano	45	28	24		15		29	30	28	25	23	24	24	20	22	22	19	9	16	24	25	22	25	499	Nagano
46	Kagoshima	10	11	19		22		10	19	29	19	27	31	21	20	24	15	16	26	31	15	17	26	24	432	Kagoshima
30	Wakayama	28	32	25		23		23	23	25	27	22	25	20	17	29	22	19	18	25	23	12	15	23	476	Wakayama
45	Miyazaki	8	18	36		15		16	19	17	18	17	19	16	24	26	23	31	20	19	27	12	29	23	433	Miyazaki
40	Fukuoka	9	21	16		25		18	10	14	13	12	21	16	23	9	17	15	16	19	16	13	8	19	330	Fukuoka
8	Ibaraki	20	11	8		10		11	11	9	10	12	6	13	15	12	13	14	15	16	13	12	13	17	261	Ibaraki



3	Iwate	3	9	8		3		6	5	5	20	6	4	12	8	6	6	1	7	7	10	8	3	5	142	Iwate
12	Chiba	4	4	12		3		1	6	6	7	6	9	5	4	6	4	8	4	14	6	8	2	5	124	Chiba
38	Ehime	5	7	12		12		11	5	8	15	6	9	11	10	3	12	5	7	4	7	9	6	4	168	Ehime
25	Shiga	11	4	2		3		4	4	2	7	6	2	5	3	2	5	7	1	3	3		1	4	79	Shiga
5	Akita	6	4	1		3		4	5		1	5	2	4	2	1	4	3	4	2	5	2	4	4	66	Akita
37	Kagawa	5	8	1		1		4	5	4	3	5	4	3	1	4	4	2	3	5	5		1	2	70	Kagawa
24	Mie	12	10	14		3		9	8	12	6	5	8	12	4	10	4	5	6	5	3	10	9	1	156	Mie
19	Yamanashi	7	2	4		6		4	6	5	3	4	4	5	3	4	4	2	3	4	4		1	1	76	Yamanashi
33	Okayama	8	4	5		3		10	1	2	2	2	2	1	2	2		1	7	2	3		3	1	61	Okayama
16	Toyama	2	2	2		1		2		3	1		3	1	2	5	4	2			1		2	1	34	Toyama
18	Fukui	2	2	1		5		2		2			2	1	1	1	3	1	1		3	2		1	30	Fukui
29	Nara	7	6	11		1		3	5	9	1	1	2	1	1		3	1	1	4	4	4			65	Nara
35	Yamaguchi	6	3	6		4		5	5		1	4	1	2	1	3	3	2	1	2	1	1	1		52	Yamaguchi
31	Tottori	5	3	1		2		2	4		2	2	3	2	1	2		1	1	1	1	2			35	Tottori
32	Shimane	1	5	2		2				1		1		2				2		4	3	2			25	Shimane
47	Okinawa		3	6		2		2			1	1	2			3	1		2						23	Okinawa
17	Ishikawa	1		2		2				1	1	1	1		1		1				2	2	1		16	Ishikawa
	total	594	522	580		464		507	481	480	486	454	462	428	443	433	401	382	384	446	459	395	379	394	9,574	total

Data source : <https://anzeninfo.mhlw.go.jp/user/anzen/tok/anst00.htm>

Return to [https://www.jisha.or.jp/english/statistics/202211\\_23.html](https://www.jisha.or.jp/english/statistics/202211_23.html)