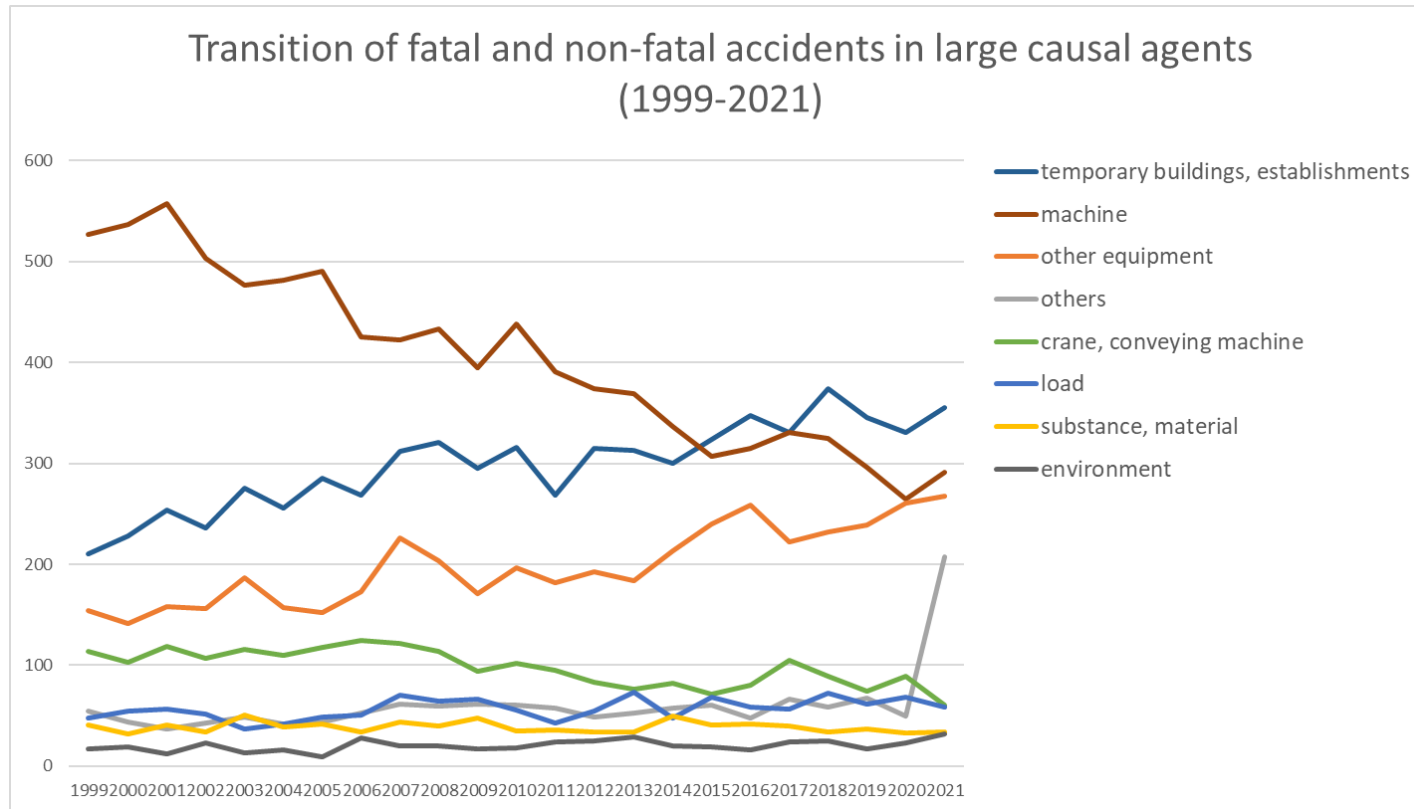
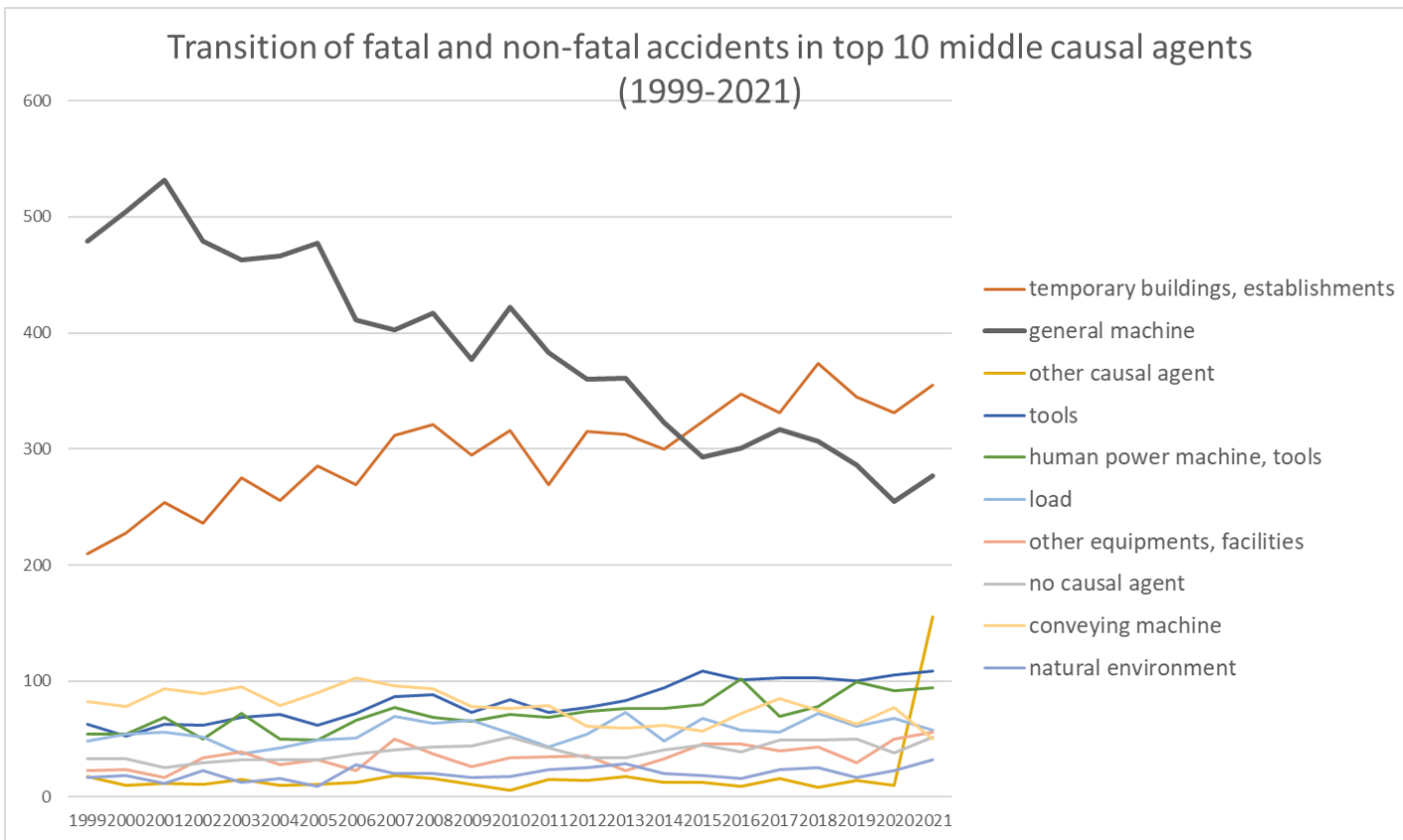


Transition of fatal and non-fatal accidents in each element like as causal agents, type of accidents, etc. in code no. 010104 bread/cake products (1999-2021)

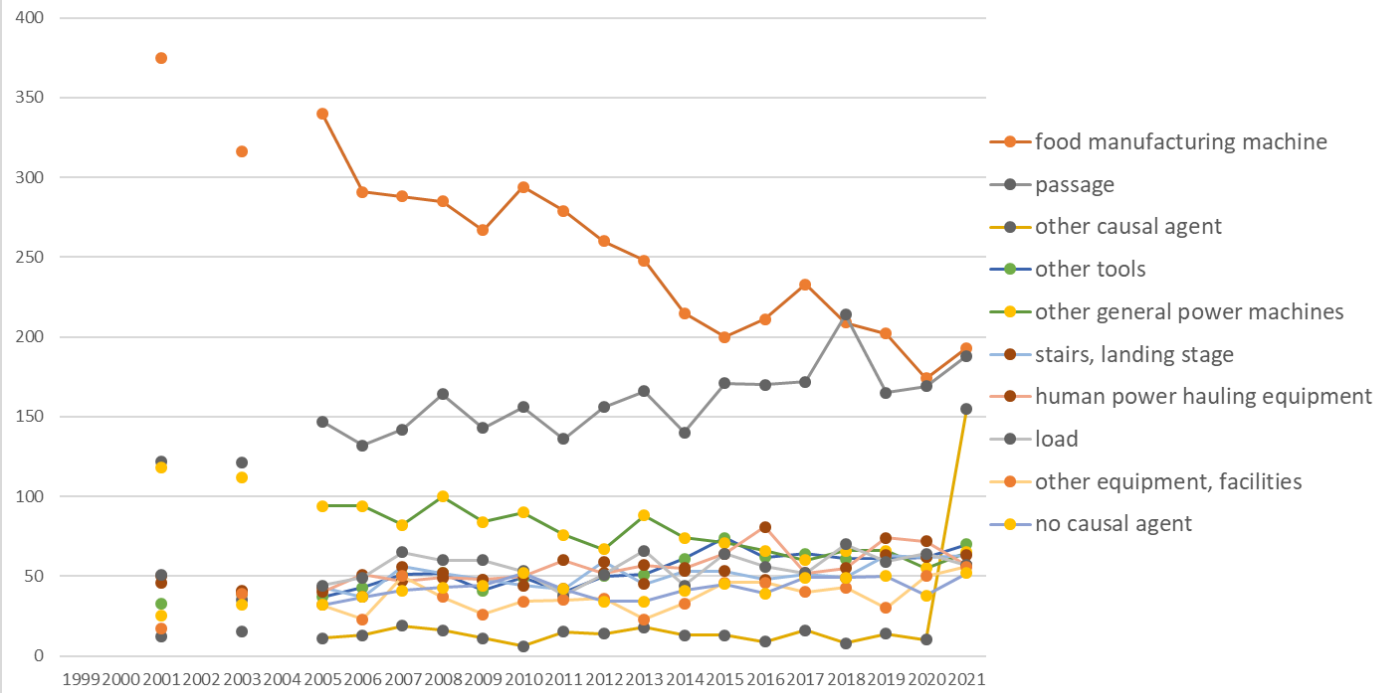


Transition of fatal and non-fatal accidents in large causal agents in code no. 010104 bread/cake products (1999-2021)



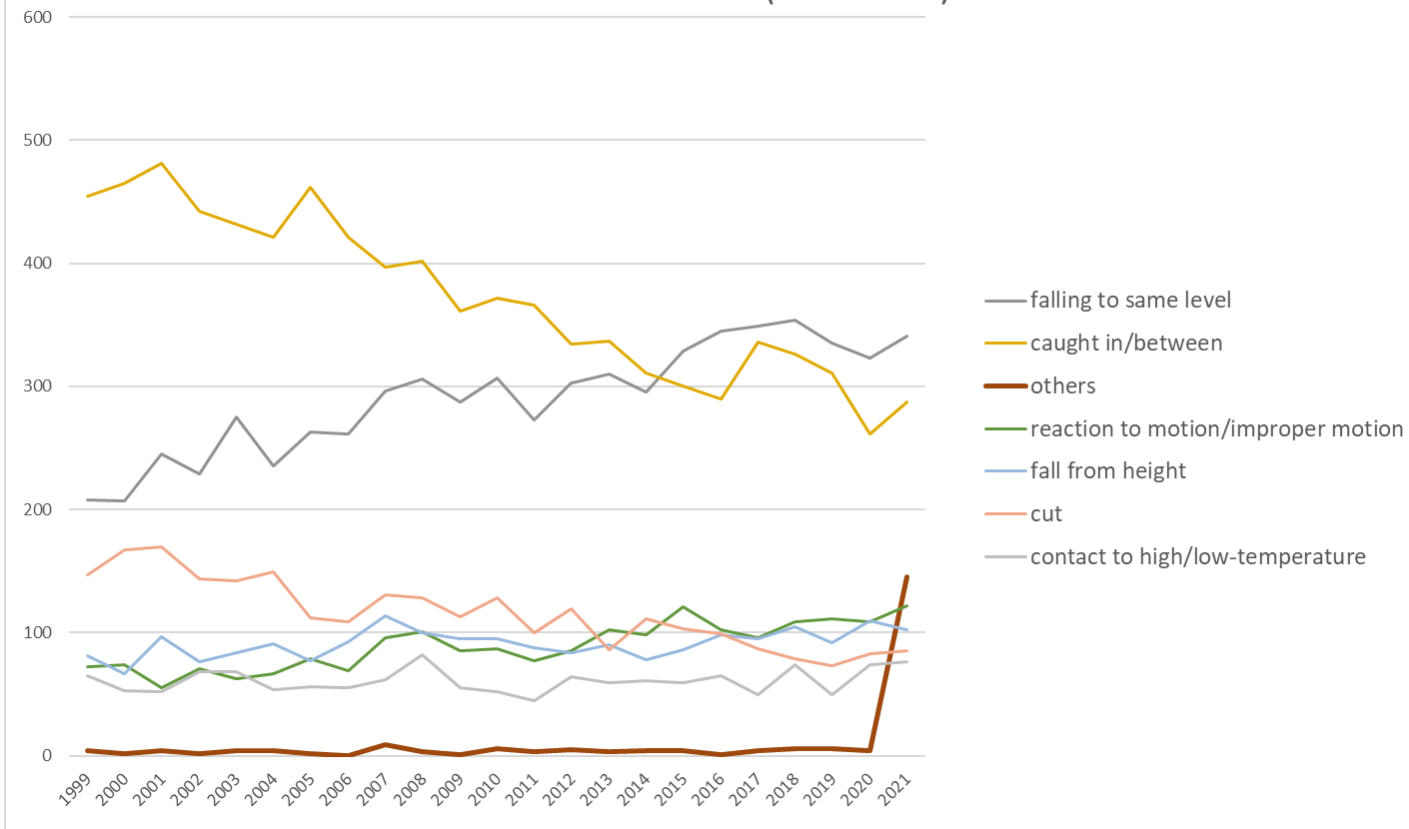
Transition of fatal and non-fatal accidents in middle causal agents in code no. 010104 bread/cake products (1999-2021)

Transition of fatal and non-fatal accidents in top 10 small causal agents (1999-2021)



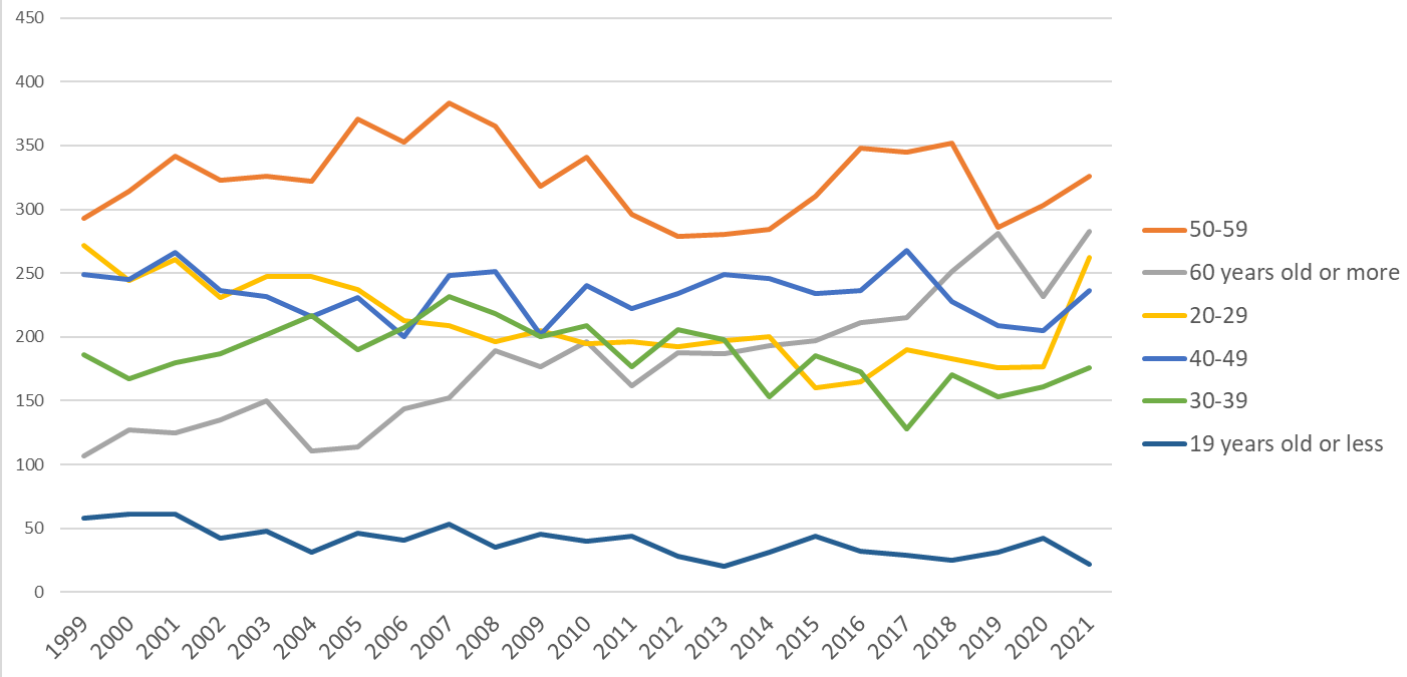
Transition of fatal and non-fatal accidents in small causal agents in code no. 010104 bread/cake products (1999-2021)

Transition of fatal and non-fatal accidents in top 7 type of accidents
(1999-2021)



Transition of fatal and non-fatal accidents in type of accidents in code no. 010104 bread/cake products (1999-2021)

Transition of fatal and non-fatal accidents in workers ages (1999-2021)



Transition of fatal and non-fatal accidents in workers ages in code no. 010104 bread/cake products (1999-2021)

| | | | | | | | | | | | | | | | | | | | | | | | | | | |
|----|-----------|-------|-------|-------|--|-------|--|-------|-------|-------|-------|-------|-------|-------|-------|-------|-------|-------|-------|-------|-------|-------|-------|-------|--------|-----------|
| 42 | Nagasaki | 21 | 29 | 16 | | 25 | | 21 | 27 | 16 | 9 | 22 | 16 | 15 | 17 | 18 | 15 | 20 | 27 | 15 | 18 | 18 | 17 | 13 | 395 | Nagasaki |
| 46 | Kagoshima | 19 | 12 | 14 | | 14 | | 22 | 16 | 14 | 17 | 10 | 21 | 15 | 19 | 12 | 12 | 21 | 9 | 23 | 12 | 19 | 15 | 13 | 329 | Kagoshima |
| 29 | Nara | 16 | 14 | 9 | | 6 | | 15 | 6 | 22 | 11 | 14 | 15 | 11 | 11 | 14 | 13 | 9 | 7 | 13 | 14 | 15 | 10 | 11 | 256 | Nara |
| 25 | Shiga | 14 | 13 | 13 | | 7 | | 13 | 9 | 14 | 12 | 7 | 4 | 7 | 9 | 17 | 14 | 16 | 20 | 15 | 15 | 9 | 13 | 11 | 252 | Shiga |
| 6 | Yamagata | 11 | 15 | 11 | | 23 | | 19 | 11 | 9 | 13 | 8 | 11 | 11 | 12 | 9 | 6 | 4 | 6 | 10 | 14 | 8 | 10 | 11 | 232 | Yamagata |
| 16 | Toyama | 12 | 14 | 9 | | 12 | | 16 | 9 | 9 | 11 | 10 | 4 | 8 | 11 | 3 | 6 | 6 | 8 | 5 | 8 | 8 | 2 | 11 | 182 | Toyama |
| 44 | Oita | 6 | 12 | 8 | | 11 | | 11 | 6 | 6 | 13 | 5 | 9 | 6 | 7 | 5 | 5 | 5 | 8 | 4 | 3 | 6 | 7 | 9 | 152 | Oita |
| 17 | Ishikawa | 14 | 11 | 8 | | 14 | | 17 | 17 | 12 | 17 | 10 | 21 | 16 | 9 | 12 | 13 | 15 | 5 | 10 | 14 | 17 | 11 | 8 | 271 | Ishikawa |
| 39 | Kochi | 8 | 14 | 11 | | 17 | | 13 | 11 | 10 | 10 | 13 | 12 | 10 | 6 | 8 | 4 | 5 | 7 | 5 | 5 | 5 | 6 | 8 | 188 | Kochi |
| 37 | Kagawa | 10 | 5 | 7 | | 7 | | 6 | 4 | 6 | 2 | 6 | 7 | 6 | 8 | 7 | 6 | 4 | 4 | 10 | 5 | 9 | 8 | 7 | 134 | Kagawa |
| 41 | Saga | 8 | 27 | 15 | | 6 | | 10 | 14 | 16 | 20 | 8 | 12 | 6 | 13 | 11 | 9 | 11 | 12 | 25 | 19 | 14 | 15 | 6 | 277 | Saga |
| 2 | Aomori | 13 | 7 | 9 | | 13 | | 13 | 6 | 9 | 7 | 7 | 3 | 7 | 5 | 4 | 7 | 4 | 5 | 7 | 8 | 6 | 5 | 5 | 150 | Aomori |
| 5 | Akita | 7 | 7 | 8 | | 7 | | 7 | 4 | 7 | 6 | 7 | 7 | 5 | 12 | 4 | 6 | 7 | 5 | 4 | 7 | 5 | 6 | 5 | 133 | Akita |
| 30 | Wakayama | 8 | 3 | 4 | | 9 | | | 10 | 3 | 5 | 4 | 5 | 4 | 5 | 3 | 4 | 7 | 4 | 4 | 3 | 3 | 5 | 5 | 98 | Wakayama |
| 36 | Tokushima | 6 | 6 | 3 | | 6 | | 4 | 8 | 6 | 7 | 3 | 6 | 7 | 7 | 6 | 2 | 2 | 2 | 3 | 3 | 3 | 5 | 4 | 99 | Tokushima |
| 32 | Shimane | 9 | 5 | 5 | | 4 | | 2 | 5 | 4 | 7 | 4 | 4 | 4 | 4 | 4 | 5 | 3 | 2 | | 4 | 2 | | 4 | 81 | Shimane |
| 45 | Miyazaki | 11 | 14 | 9 | | 5 | | 5 | 6 | 7 | 8 | 5 | 6 | 5 | 5 | 10 | 14 | 8 | 10 | 6 | 3 | 6 | 5 | 3 | 151 | Miyazaki |
| 18 | Fukui | 2 | 7 | 10 | | 2 | | 5 | 1 | 10 | 3 | 8 | 8 | 2 | 4 | 3 | 3 | 7 | 5 | 2 | 6 | 3 | 3 | 3 | 97 | Fukui |
| 35 | Yamaguchi | 15 | 13 | 16 | | 12 | | 11 | 5 | 16 | 7 | 11 | 11 | 7 | 5 | 8 | 8 | 11 | 10 | 6 | 4 | 7 | 12 | 2 | 197 | Yamaguchi |
| | total | 1,165 | 1,158 | 1,235 | | 1,205 | | 1,189 | 1,158 | 1,277 | 1,254 | 1,147 | 1,221 | 1,097 | 1,127 | 1,131 | 1,107 | 1,130 | 1,165 | 1,175 | 1,209 | 1,136 | 1,120 | 1,305 | 24,711 | total |

Data source : <https://anzeninfo.mhlw.go.jp/user/anzen/tok/anst00.htm>

Return to https://www.jisha.or.jp/english/statistics/202211_23.html