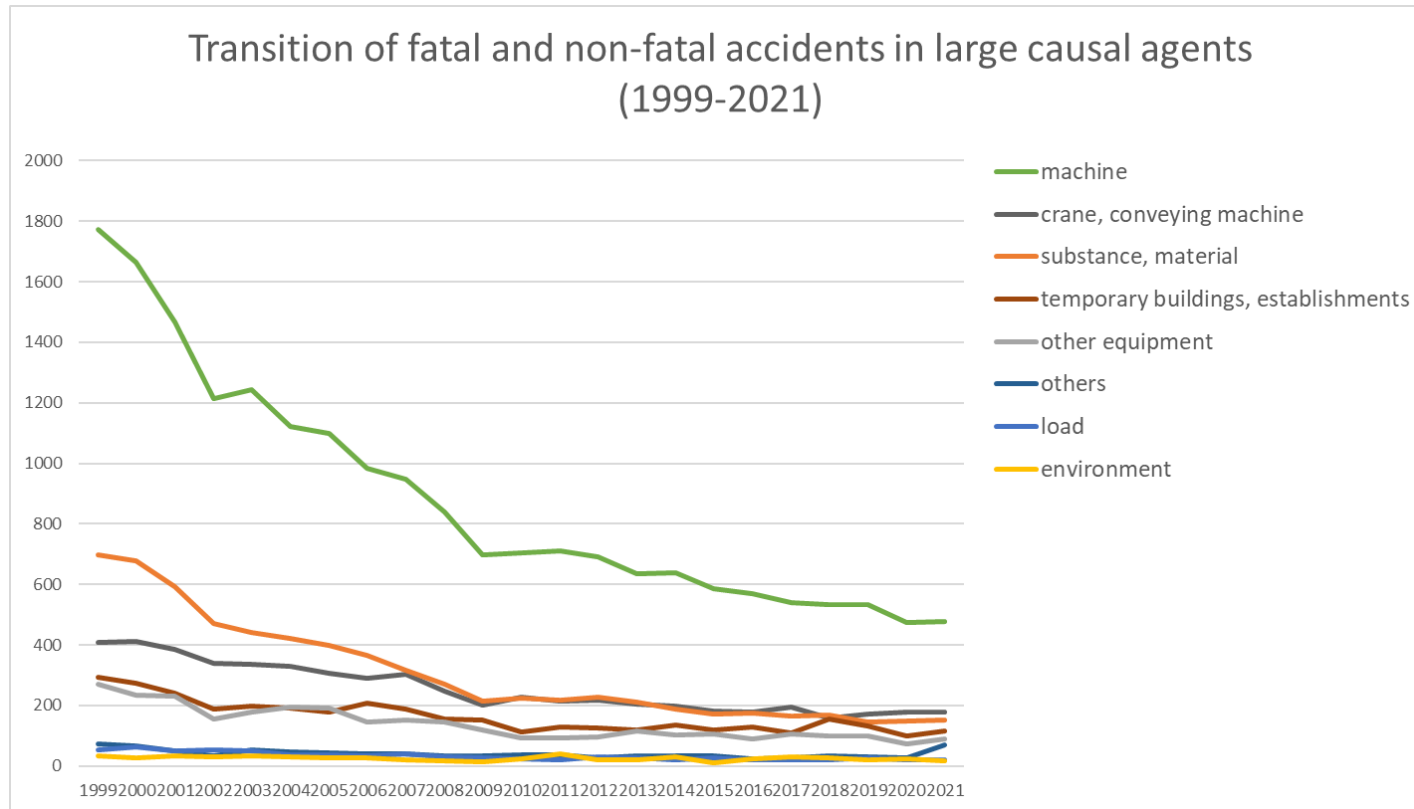
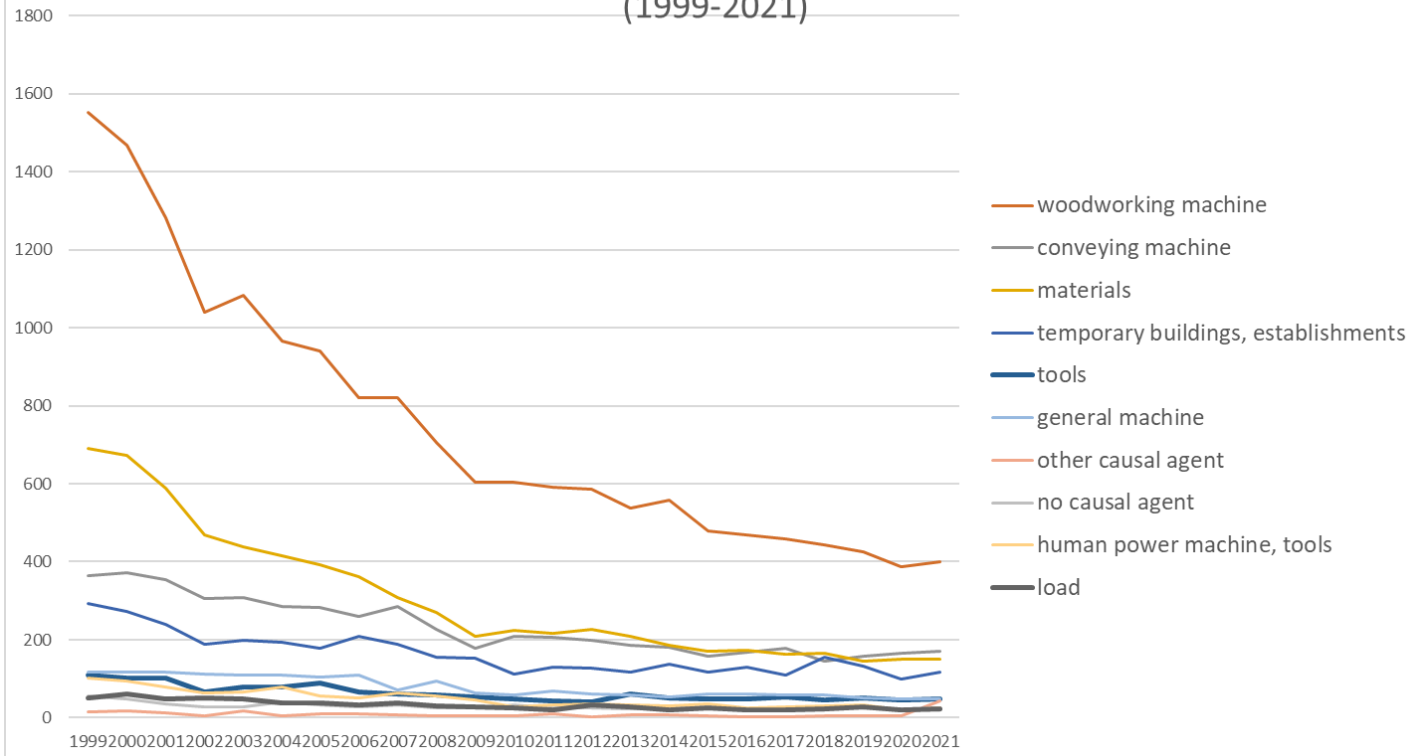


Transition of fatal and non-fatal accidents in each element like as causal agents, type of accidents, etc. in code no. 0104 wood products (1999-2021)



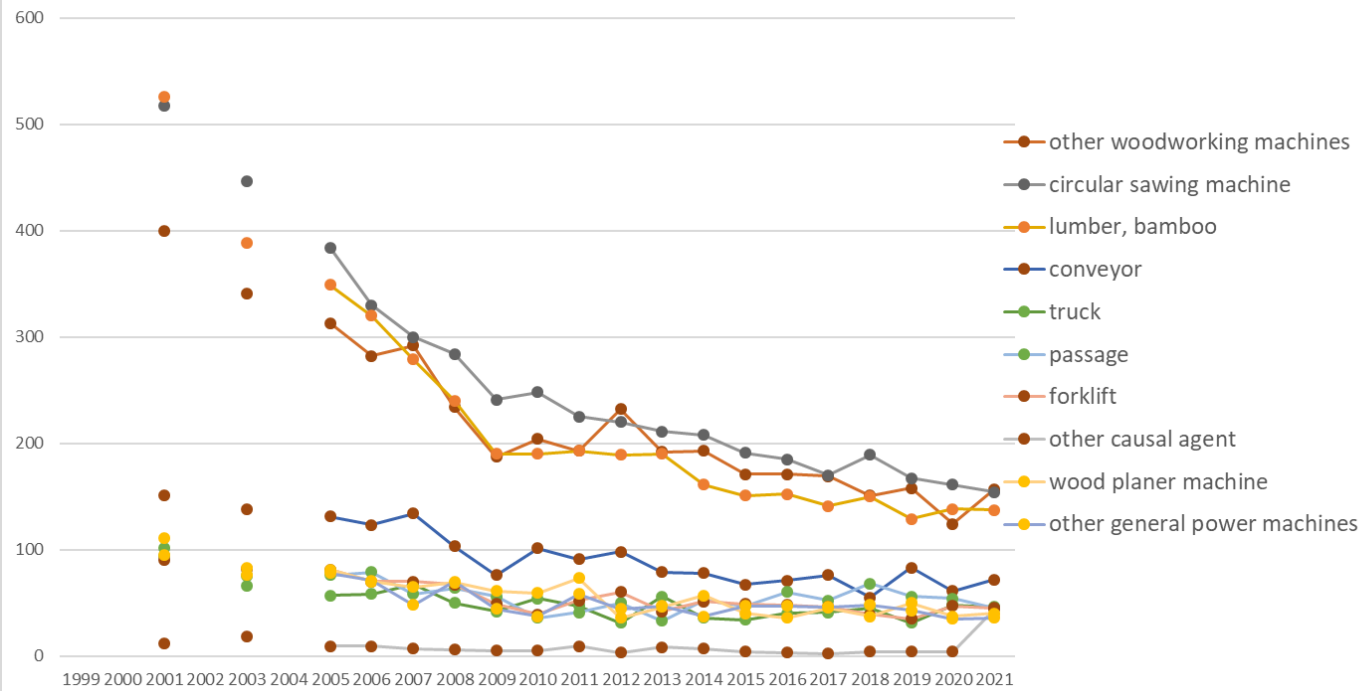
Transition of fatal and non-fatal accidents in large causal agents in code no. 0104 wood products (1999-2021)

Transition of fatal and non-fatal accidents in top 10 middle causal agents  
(1999-2021)



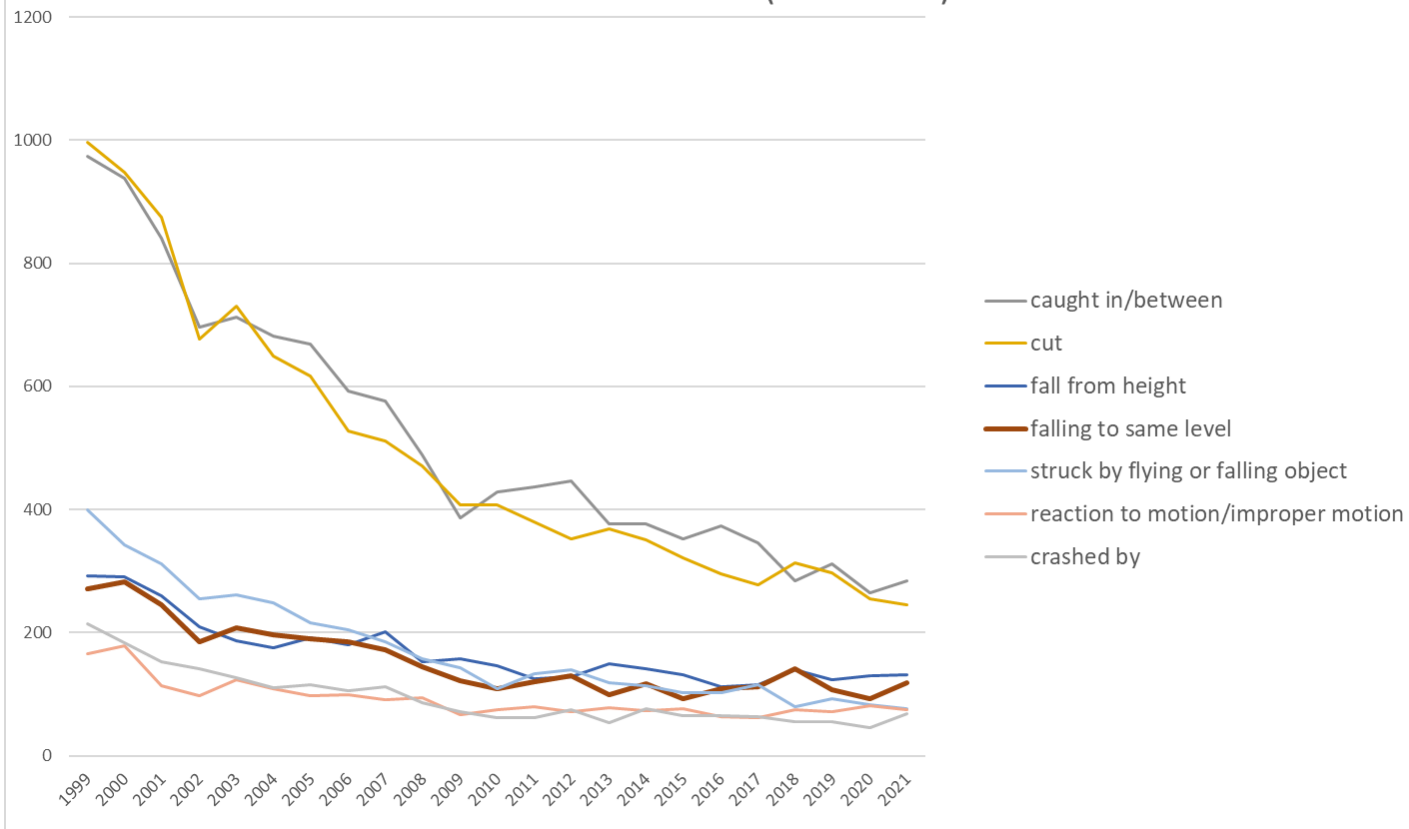
Transition of fatal and non-fatal accidents in middle causal agents in code no. 0104 wood products (1999-2021)

Transition of fatal and non-fatal accidents in top 10 small causal agents  
(1999-2021)



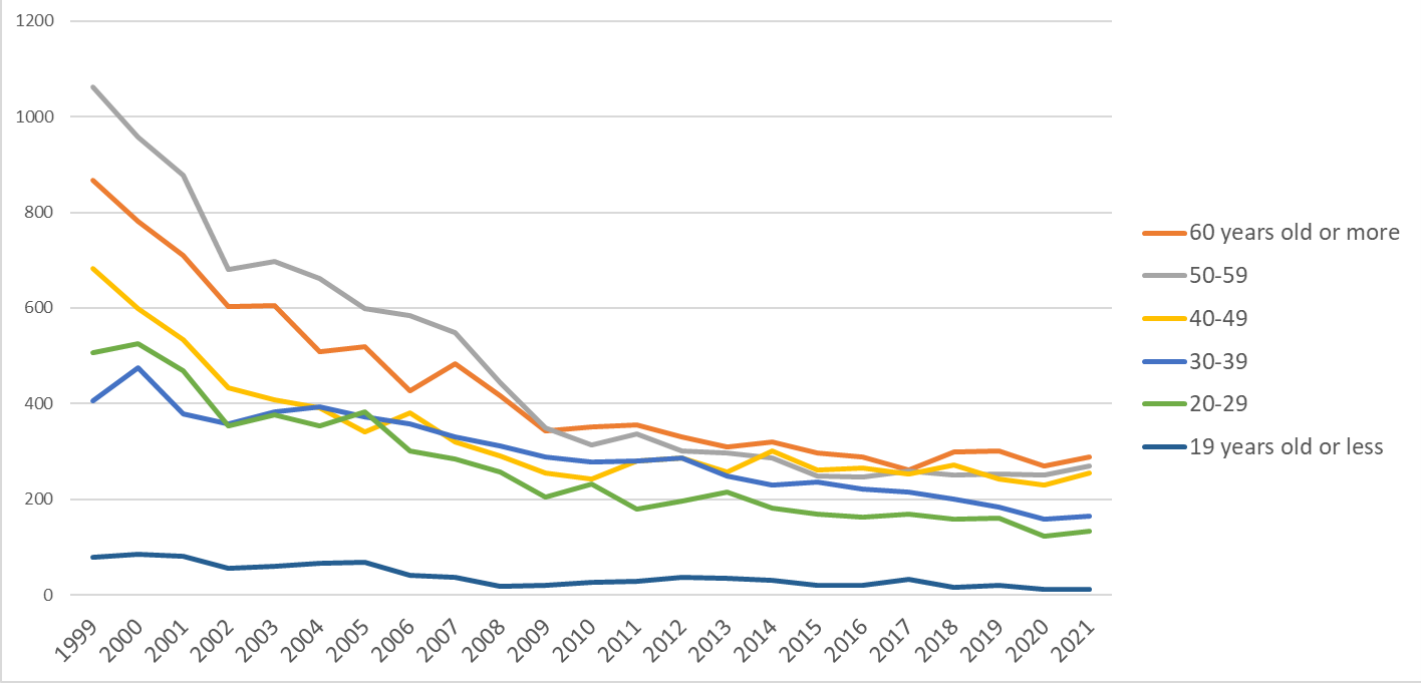
Transition of fatal and non-fatal accidents in small causal agents in code no. 0104 wood products (1999-2021)

Transition of fatal and non-fatal accidents in top 7 type of accidents  
(1999-2021)



Transition of fatal and non-fatal accidents in type of accidents in code no. 0104 wood products (1999-2021)

Transition of fatal and non-fatal accidents in workers ages (1999-2021)



Transition of fatal and non-fatal accidents in workers ages in code no. 0104 wood products (1999-2021)































10	drown	1	1		1									17												20	drown	
15	burst				2	2	3		1					1	1												10	burst
18	traffic accident (others)		1						1	3				1			1	1				1	1				10	traffic accident (others)
16	fire	1										1							1						1		4	fire
	total	3,604	3,422	3,048	2,486	2,533	2,375	2,284	2,093	2,006	1,739	1,463	1,446	1,462	1,438	1,365	1,350	1,233	1,206	1,191	1,196	1,161	1,045	1,124	42,270	total		

Transition of fatal and non-fatal accidents in workers ages in code no. 0104 wood products (1999-2021)

code	Age	1999	2000	2001	2002	2003	2004	2005	2006	2007	2008	2009	2010	2011	2012	2013	2014	2015	2016	2017	2018	2019	2020	2021	total	Age
6	60 years old or more	867	781	709	603	605	509	520	428	484	417	344	352	355	331	309	320	297	289	262	299	301	270	288	9,940	60 years old or more
5	50-59	1,061	958	877	681	698	661	599	584	549	444	349	314	337	301	298	287	248	247	259	251	253	251	269	10,776	50-59
4	40-49	683	598	533	434	409	392	341	380	320	290	256	243	280	286	258	301	262	266	253	272	243	230	255	7,785	40-49
3	30-39	406	475	379	358	384	393	373	358	331	312	288	278	281	286	249	231	236	221	215	200	184	159	165	6,762	30-39
2	20-29	507	525	468	353	377	354	383	301	284	257	205	232	180	196	215	181	169	163	170	158	160	123	134	6,095	20-29
1	19 years old or less	80	85	82	57	60	66	68	42	38	19	21	27	29	38	36	30	21	20	32	16	20	12	13	912	19 years old or less
	total	3,604	3,422	3,048	2,486	2,533	2,375	2,284	2,093	2,006	1,739	1,463	1,446	1,462	1,438	1,365	1,350	1,233	1,206	1,191	1,196	1,161	1,045	1,124	42,270	total

Transition of fatal and non-fatal accidents in workers scales in code no. 0104 wood products (1999-2021)

code	Workers scale	1999	2000	2001	2002	2003	2004	2005	2006	2007	2008	2009	2010	2011	2012	2013	2014	2015	2016	2017	2018	2019	2020	2021	total	Workers scale
2	10-29	1,381	1,246	1,163	868	945	880	852	739	726	639	508	514	458	500	455	474	447	415	408	423	386	361	379	15,167	10-29
1	9 workers or less	1,493	1,439	1,272	1,100	1,097	991	926	845	748	655	585	557	580	504	474	467	405	386	396	356	372	300	318	16,266	9 workers or less
3	30-49	376	349	289	258	246	242	260	226	232	192	157	159	166	178	203	202	163	182	173	180	181	172	170	4,956	30-49
4	50-99	197	243	206	145	130	167	136	161	160	139	103	122	156	141	110	118	111	121	125	159	139	113	142	3,344	50-99
5	100-299	132	120	102	108	103	91	98	109	121	105	96	86	93	107	112	84	104	88	79	70	68	82	89	2,247	100-299

6	300 workers or more	25	25	16	7	12	4	12	13	19	9	14	8	9	8	11	5	3	14	10	8	15	17	26	290	300 workers or more
	total	3,604	3,422	3,048	2,486	2,533	2,375	2,284	2,093	2,006	1,739	1,463	1,446	1,462	1,438	1,365	1,350	1,233	1,206	1,191	1,196	1,161	1,045	1,124	42,270	total

Transition of fatal and non-fatal accidents in months in code no. 0104 wood products (1999-2021)

code	Month	1999	2000	2001	2002	2003	2004	2005	2006	2007	2008	2009	2010	2011	2012	2013	2014	2015	2016	2017	2018	2019	2020	2021	total	Month
1	January	263	276	267	203	190	186	175	175	149	162	121	112	119	116	106	122	98	110	95	103	111	93	126	3,478	January
10	October	313	262	237	234	247	209	179	188	167	145	125	135	106	119	101	107	109	106	102	108	117	83	108	3,607	October
9	September	299	273	231	187	231	189	182	160	151	138	142	127	120	94	107	106	104	113	96	103	94	86	105	3,438	September
4	April	307	273	253	204	196	214	189	164	170	158	130	102	114	111	120	109	108	98	89	94	95	82	102	3,482	April
3	March	325	336	297	194	241	246	206	180	192	146	131	124	162	134	139	121	115	101	123	118	79	95	94	3,899	March
8	August	299	271	251	191	208	186	203	171	166	143	120	124	121	124	114	89	91	92	104	85	91	71	94	3,409	August
7	July	357	277	253	253	205	200	208	193	185	171	104	143	121	111	125	100	111	112	99	114	90	80	91	3,703	July
11	November	250	257	249	204	196	189	174	164	159	111	126	124	127	134	131	102	90	93	104	88	89	79	86	3,326	November
2	February	320	329	265	199	205	180	205	171	155	153	119	109	143	146	100	122	92	103	88	90	99	99	85	3,577	February
5	May	294	281	250	222	222	182	185	164	199	136	119	123	112	114	113	127	99	77	100	98	105	85	81	3,488	May
12	December	272	288	242	193	179	193	168	163	131	139	113	110	101	126	99	123	100	100	91	99	95	94	78	3,297	December
6	June	305	299	253	202	213	201	210	200	182	137	113	113	116	109	110	122	116	101	100	96	96	98	74	3,566	June
	total	3,604	3,422	3,048	2,486	2,533	2,375	2,284	2,093	2,006	1,739	1,463	1,446	1,462	1,438	1,365	1,350	1,233	1,206	1,191	1,196	1,161	1,045	1,124	42,270	total

Transition of fatal and non-fatal accidents in prefectures in code no. 0104 wood products (1999-2021)

code	Prefecture	1999	2000	2001	2002	2003	2004	2005	2006	2007	2008	2009	2010	2011	2012	2013	2014	2015	2016	2017	2018	2019	2020	2021	total	Prefecture
1	Hokkaido	271	270	219		187		187	159	177	130	117	105	125	110	90	106	88	82	95	98	77	84	92	2,869	Hokkaido
21	Gifu	149	136	129		81		88	79	65	46	50	47	51	39	53	39	44	37	48	34	41	31	55	1,342	Gifu
45	Miyazaki	127	80	77		81		74	72	71	54	61	72	70	74	71	44	57	47	57	42	45	55	52	1,383	Miyazaki

29	Nara	85	81	83		77		66	68	65	59	36	55	39	42	49	62	41	41	30	40	40	41	48	1,148	Nara
34	Hiroshima	137	135	102		80		81	70	53	57	41	40	36	55	45	44	42	38	43	33	34	33	44	1,243	Hiroshima
27	Osaka	124	151	148		103		94	81	91	82	54	64	59	57	60	45	62	42	48	44	46	37	42	1,534	Osaka
23	Aichi	185	176	159		136		107	107	104	83	91	74	89	70	64	63	45	66	71	58	59	45	41	1,893	Aichi
22	Shizuoka	202	231	182		133		103	93	111	80	65	83	76	58	55	66	45	56	38	64	54	41	36	1,872	Shizuoka
5	Akita	82	91	56		38		38	55	47	47	25	38	32	38	34	32	26	40	39	50	30	33	34	905	Akita
3	Iwate	63	61	78		53		39	36	50	33	30	43	29	39	41	41	39	31	30	35	30	29	34	864	Iwate
7	Fukushima	86	80	74		59		63	64	55	43	40	38	39	45	35	39	34	33	30	35	24	22	33	971	Fukushima
43	Kumamoto	83	62	65		52		54	38	52	42	36	41	34	36	39	36	27	26	27	24	38	21	32	865	Kumamoto
10	Gunma	69	70	61		54		50	38	29	33	31	38	36	30	26	31	20	24	21	24	18	22	31	756	Gunma
44	Oita	100	92	93		82		62	54	71	47	51	41	37	39	29	30	45	40	36	42	37	37	29	1,094	Oita
9	Tochigi	74	46	60		42		44	33	33	42	32	29	27	41	27	34	32	31	13	24	29	27	29	749	Tochigi
8	Ibaraki	56	73	60		52		60	55	55	37	33	31	25	33	45	32	38	28	27	28	36	25	25	854	Ibaraki
46	Kagoshima	51	44	38		33		37	37	23	30	32	25	16	25	20	20	10	20	26	25	32	20	25	589	Kagoshima
38	Ehime	97	87	76		58		59	61	41	45	32	26	29	27	36	31	31	28	30	23	34	31	24	906	Ehime
11	Saitama	66	66	58		50		59	58	43	40	26	21	24	25	27	40	31	29	27	19	19	24	24	776	Saitama
12	Chiba	50	66	53		50		45	42	30	36	38	34	37	29	31	22	23	36	29	24	23	17	24	739	Chiba
40	Fukuoka	105	112	91		80		71	63	50	55	30	40	33	39	42	49	27	37	25	32	34	16	23	1,054	Fukuoka
24	Mie	107	114	101		81		59	58	53	52	43	45	38	30	25	27	38	34	28	18	24	24	21	1,020	Mie
33	Okayama	80	64	68		72		57	41	41	38	21	16	28	33	33	23	17	23	28	28	26	32	21	790	Okayama
20	Nagano	74	45	40		42		37	38	29	28	20	23	25	15	22	15	18	20	16	16	10	15	20	568	Nagano
26	Kyoto	47	31	36		34		35	27	24	19	16	17	22	19	22	20	18	11	19	15	14	22	20	488	Kyoto
25	Shiga	41	31	24		24		29	24	23	24	17	13	17	13	14	16	13	9	7	15	19	13	19	405	Shiga
28	Hyogo	97	91	90		69		59	55	45	40	49	38	49	43	31	42	36	30	26	31	22	18	18	979	Hyogo
30	Wakayama	67	69	52		50		33	35	42	23	23	28	34	19	22	16	20	13	23	16	17	18	18	638	Wakayama

35	Yamaguchi	36	46	36		32		34	24	29	25	23	16	18	25	27	15	9	19	9	7	13	16	18	477	Yamaguchi
16	Toyama	75	80	63		52		53	46	39	23	22	24	24	26	21	31	19	19	17	17	17	13	17	698	Toyama
39	Kochi	63	55	53		57		32	36	34	27	25	24	17	20	14	15	26	26	24	17	18	18	17	618	Kochi
36	Tokushima	88	76	73		59		57	36	43	31	23	25	23	25	35	20	21	13	15	16	24	13	16	732	Tokushima
32	Shimane	59	52	36		24		27	31	24	15	20	11	15	23	11	15	17	20	25	23	14	13	16	491	Shimane
15	Niigata	74	68	73		51		43	47	33	33	32	25	25	27	26	31	26	25	33	20	20	24	15	751	Niigata
19	Yamanashi	21	19	15		18		13	9	8	6	10	7	7	10	7	8	6	6	3	4	2	7	15	201	Yamanashi
41	Saga	24	19	20		18		15	18	7	14	13	10	12	7	7	6	5	9	8	6	9	10	14	251	Saga
31	Tottori	15	29	17		12		5	9	15	17	10	12	9	11	8	8	11	9	6	5	11	13	11	243	Tottori
13	Tokyo	69	42	51		45		26	36	34	36	33	23	23	16	18	16	18	14	15	13	16	11	10	565	Tokyo
2	Aomori	56	48	22		26		19	14	12	15	15	12	13	15	9	8	10	9	12	14	14	14	10	367	Aomori
14	Kanagawa	29	28	31		29		27	22	19	23	12	16	19	15	16	14	13	12	8	22	15	1	9	380	Kanagawa
17	Ishikawa	41	28	32		21		17	19	14	14	16	7	11	13	12	18	14	10	9	14	7	7	9	333	Ishikawa
42	Nagasaki	19	17	17		8		15	13	9	14	10	12	5	9	6	8	9	8	8	12	11	5	8	223	Nagasaki
4	Miyagi	50	43	51		41		35	39	45	33	19	10	35	18	14	27	15	14	23	23	22	14	7	578	Miyagi
37	Kagawa	37	34	31		44		28	15	16	17	11	11	12	10	12	16	14	8	8	13	11	7	7	362	Kagawa
6	Yamagata	34	43	30		29		20	14	24	25	8	13	12	16	19	17	16	17	16	10	13	13	6	395	Yamagata
18	Fukui	36	34	21		12		24	21	26	23	18	22	20	25	8	9	10	13	12	17	10	9	3	373	Fukui
47	Okinawa	3	6	3		2		4	3	2	3	3	1	6	4	7	3	7	3	3	6	2	4	2	77	Okinawa
	total	3,604	3,422	3,048		2,533		2,284	2,093	2,006	1,739	1,463	1,446	1,462	1,438	1,365	1,350	1,233	1,206	1,191	1,196	1,161	1,045	1,124	37,409	total

Data source : <https://anzeninfo.mhlw.go.jp/user/anzen/tok/anst00.htm>

Return to [https://www.jisha.or.jp/english/statistics/202211\\_23.html](https://www.jisha.or.jp/english/statistics/202211_23.html)