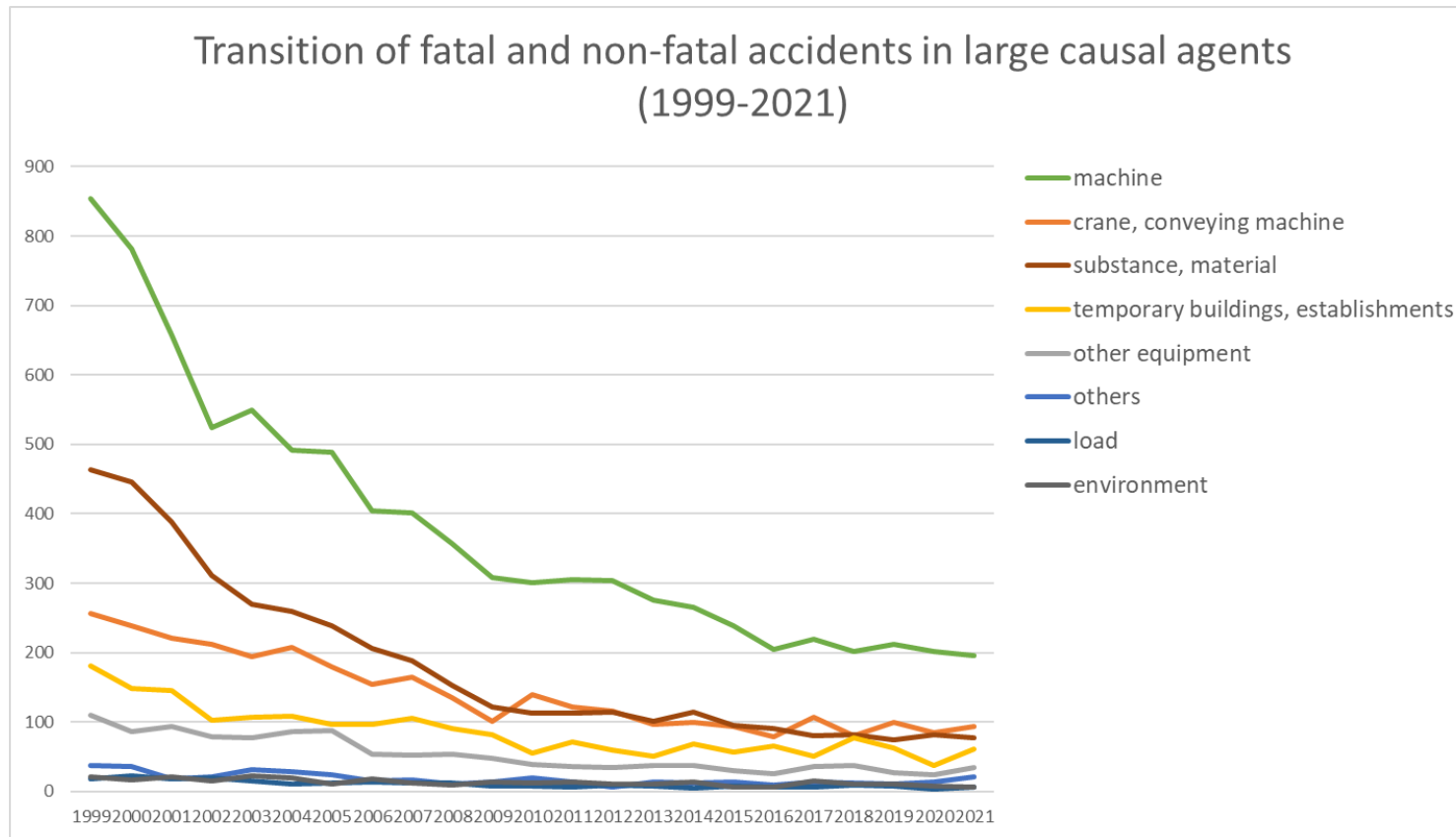
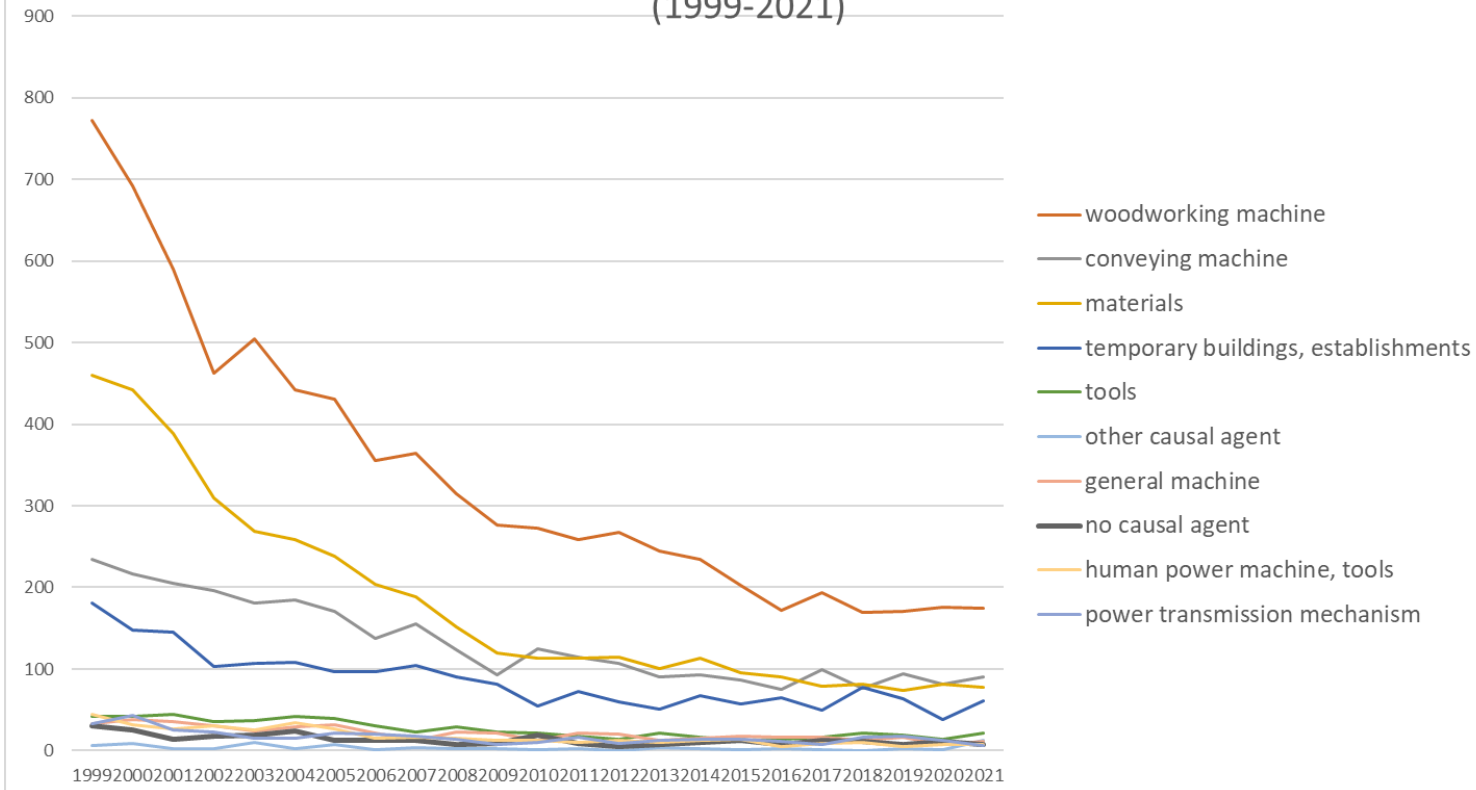


Transition of fatal and non-fatal accidents in each element like as causal agents, type of accidents, etc. in code no. 010401 lumbering (1999-2021)



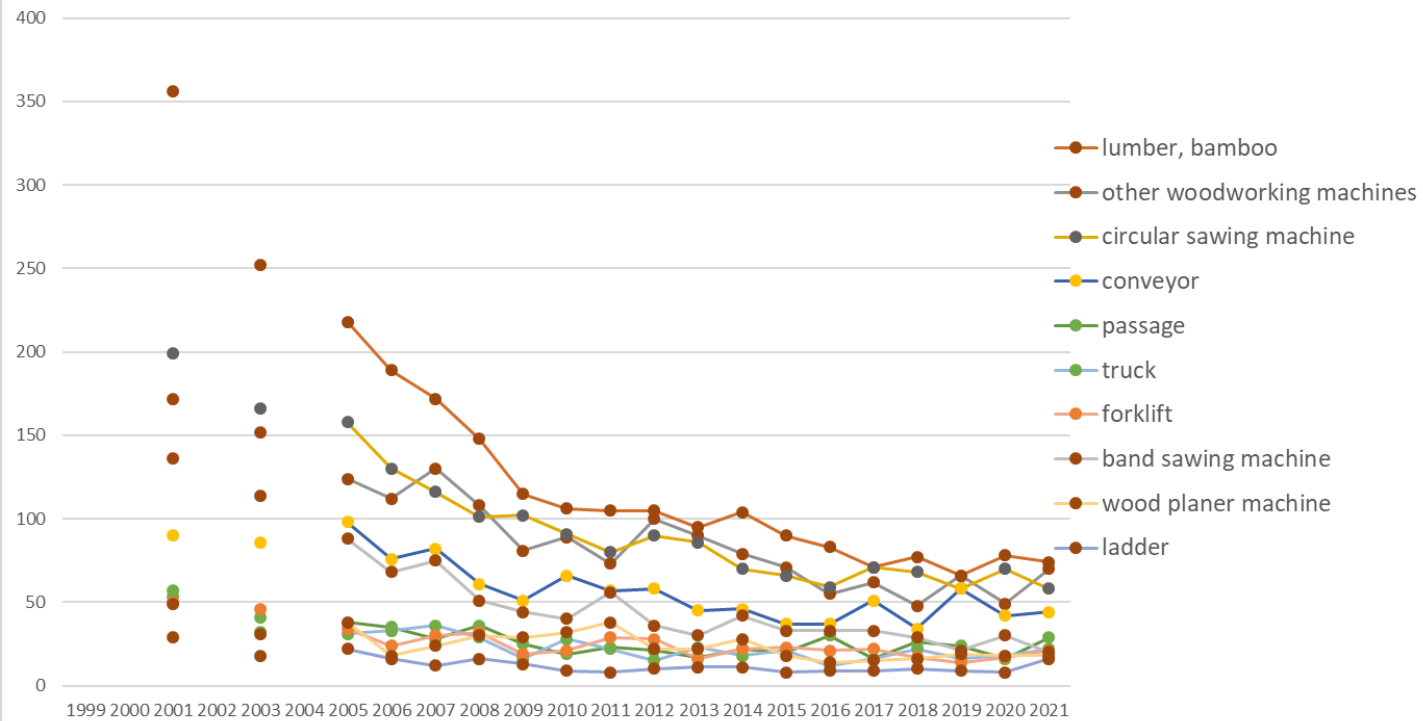
Transition of fatal and non-fatal accidents in large causal agents in code no. 010401 lumbering (1999-2021)

Transition of fatal and non-fatal accidents in top 10 middle causal agents
(1999-2021)



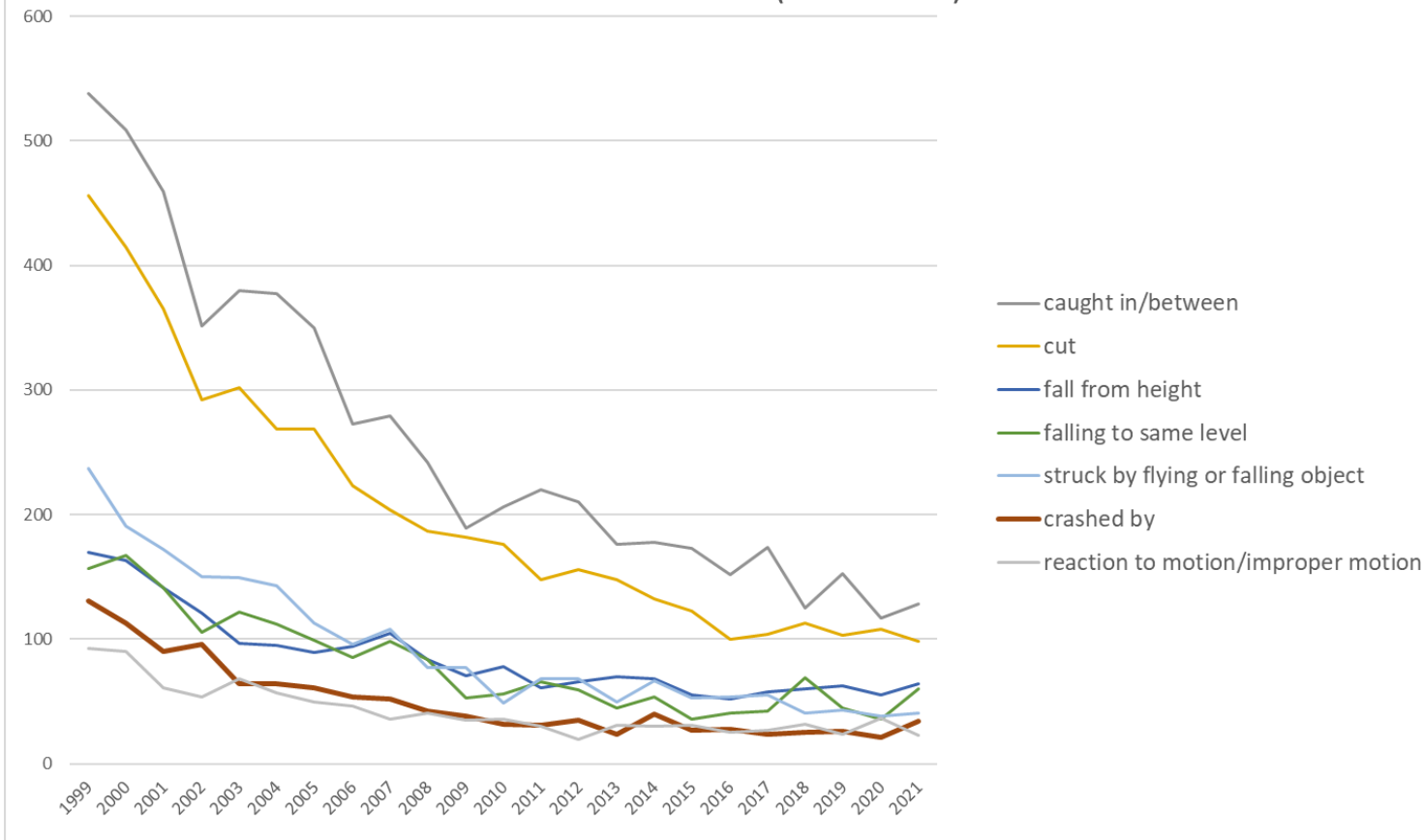
Transition of fatal and non-fatal accidents in middle causal agents in code no. 010401 lumbering (1999-2021)

Transition of fatal and non-fatal accidents in top 10 small causal agents (1999-2021)



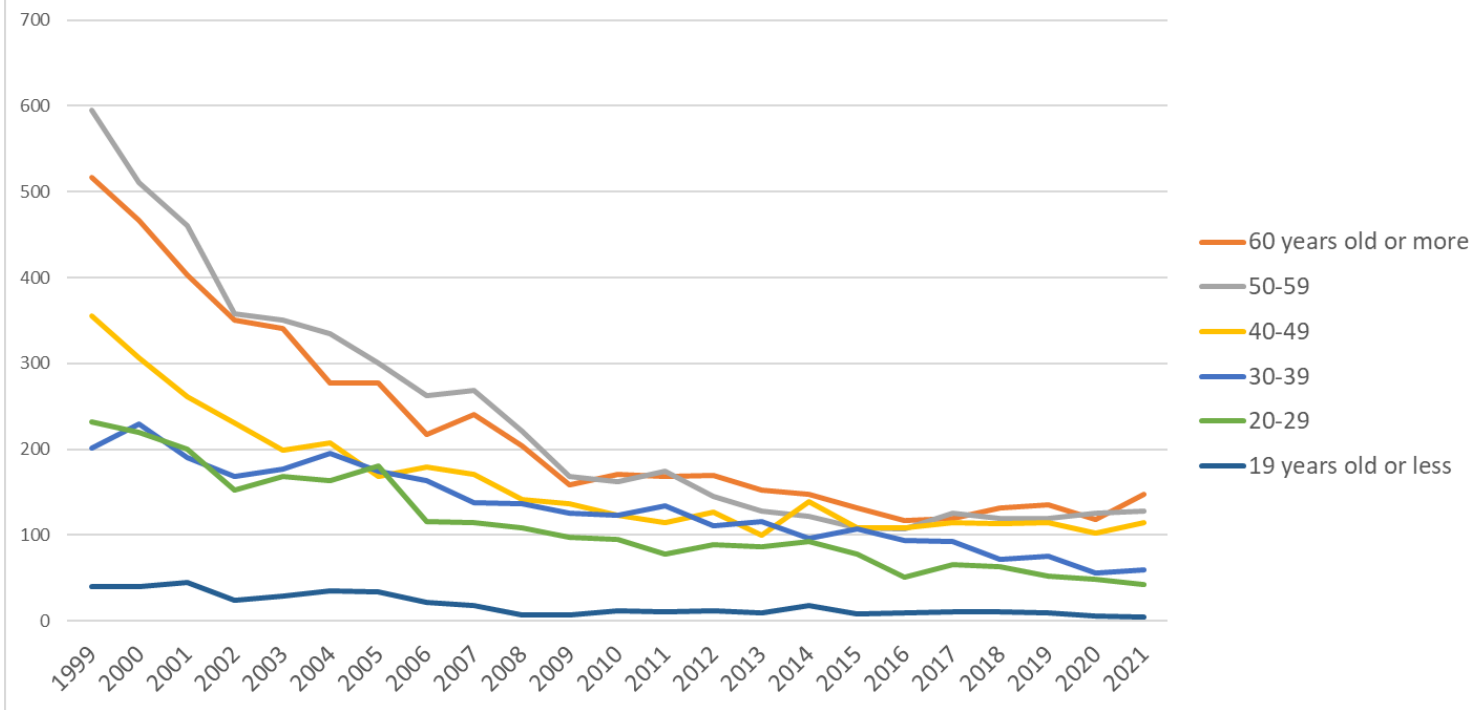
Transition of fatal and non-fatal accidents in small causal agents in code no. 010401 lumbering (1999-2021)

Transition of fatal and non-fatal accidents in top 7 type of accidents
(1999-2021)



Transition of fatal and non-fatal accidents in type of accidents in code no. 010401 lumbering (1999-2021)

Transition of fatal and non-fatal accidents in workers ages (1999-2021)



Transition of fatal and non-fatal accidents in workers ages in code no. 010401 lumbering (1999-2021)

2	February	173	189	148	107	94	90	98	83	71	81	66	56	59	75	46	57	39	41	40	35	37	45	43	1,773	February
10	October	161	134	120	108	114	99	86	96	81	72	54	69	50	60	43	50	54	40	49	47	47	28	39	1,701	October
4	April	163	134	122	114	95	120	89	84	84	77	60	54	62	55	52	56	48	35	43	42	41	33	38	1,701	April
3	March	183	182	163	96	124	131	107	82	107	62	66	56	67	56	56	55	56	42	55	54	35	47	36	1,918	March
7	July	180	134	129	136	107	107	104	90	86	73	40	72	49	55	53	46	49	54	50	51	40	39	36	1,780	July
5	May	160	151	132	118	128	98	88	79	92	56	61	62	67	53	56	58	47	24	37	48	40	29	36	1,720	May
6	June	171	159	129	97	102	95	107	84	69	66	51	56	54	48	49	56	48	34	41	42	37	51	31	1,677	June
	total	1,941	1,775	1,561	1,284	1,266	1,212	1,136	960	951	820	693	686	680	654	593	615	542	487	528	510	506	455	496	20,351	total

Transition of fatal and non-fatal accidents in prefectures in code no. 010401 lumbering (1999-2021)

code	Prefecture	1999	2000	2001	2002	2003	2004	2005	2006	2007	2008	2009	2010	2011	2012	2013	2014	2015	2016	2017	2018	2019	2020	2021	total	Prefecture
1	Hokkaido	170	152	135		107		111	81	98	75	70	55	65	57	54	56	52	40	53	58	52	48	48	1,637	Hokkaido
45	Miyazaki	102	65	58		56		57	52	57	42	43	48	55	47	40	30	36	34	38	33	35	41	42	1,011	Miyazaki
44	Oita	68	67	71		57		48	41	50	37	38	30	27	34	23	23	27	33	27	32	31	24	22	810	Oita
3	Iwate	40	44	52		35		19	20	31	15	19	27	23	27	34	26	27	16	21	23	19	22	22	562	Iwate
34	Hiroshima	49	56	44		29		29	29	21	23	11	16	16	22	19	23	20	15	22	11	16	16	21	508	Hiroshima
7	Fukushima	53	48	57		40		41	35	39	22	24	28	24	27	21	19	19	16	19	16	13	13	18	592	Fukushima
29	Nara	60	49	53		44		37	30	25	26	18	21	24	17	13	24	14	12	10	10	15	14	18	534	Nara
43	Kumamoto	63	42	43		37		42	27	35	34	33	26	23	26	26	24	22	16	15	16	18	12	17	597	Kumamoto
38	Ehime	85	63	58		49		43	37	34	36	27	17	24	17	23	22	20	22	17	18	22	21	16	671	Ehime
5	Akita	52	60	41		17		25	22	27	24	15	19	13	21	19	21	14	19	24	27	15	21	16	512	Akita
10	Gunma	26	30	33		26		20	18	6	14	17	12	15	9	3	8	7	9	8	6	5	10	15	297	Gunma
27	Osaka	12	20	23		15		14	12	10	9	4	12	2	12	8	15	15	2	4	7	6	5	15	222	Osaka
39	Kochi	49	45	41		49		21	29	30	21	19	14	12	12	12	13	15	17	16	12	13	13	14	467	Kochi

42	Nagasaki	14	13	10		5		9	8	4	8	2	7	4	4	2	4	6	5	3	5	6	1	4	124	Nagasaki
25	Shiga	16	13	12		6		10	11	5	4	6	3	4	2	3	1		1	1	6	2	3	4	113	Shiga
6	Yamagata	29	32	22		20		14	9	15	20	7	8	8	10	12	11	5	9	7	4	6	7	3	258	Yamagata
4	Miyagi	33	21	21		25		13	10	12	10	8	3	8	8	7	16	10	2	8	8	14	10	3	250	Miyagi
17	Ishikawa	19	16	16		12		9	8	6	4	8	7	5	7	2	5	4	2	4	5	3	2	3	147	Ishikawa
13	Tokyo	16	8	12		10		8	4	12	5	6	8	5	1	6	1	6		2	4	2		2	118	Tokyo
18	Fukui	21	24	10		3		17	11	14	15	12	16	11	17	6	6	4	6	7	5	5	4	1	215	Fukui
37	Kagawa	17	10	9		13		11	2	8	5	4	7	2	2	3	6	7		1	2	3	2	1	115	Kagawa
31	Tottori	10	10	12		6		4	3	9	8	3	1	1	6	3	4	4	4	3	3	3	1	1	99	Tottori
14	Kanagawa	9	6	4		8		5	3	5	6	2	3	3	1	3	3	2	4		1			1	69	Kanagawa
47	Okinawa	1	1								1			3		4					1				11	Okinawa
	total	1,941	1,775	1,561		1,266		1,136	960	951	820	693	686	680	654	593	615	542	487	528	510	506	455	496	17,855	total

Data source : <https://anzeninfo.mhlw.go.jp/user/anzen/tok/anst00.htm>

Return to https://www.jisha.or.jp/english/statistics/202211_23.html