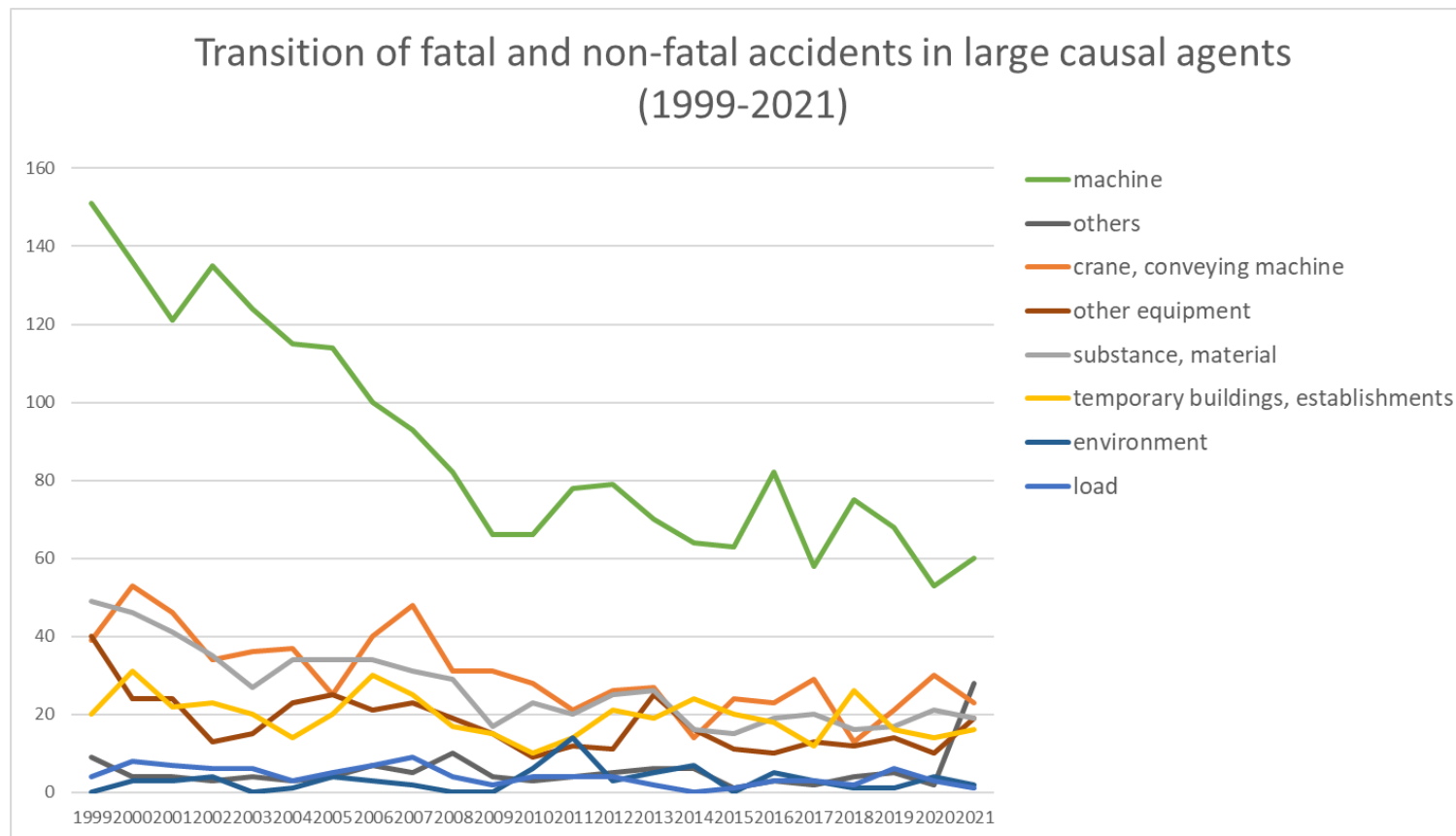
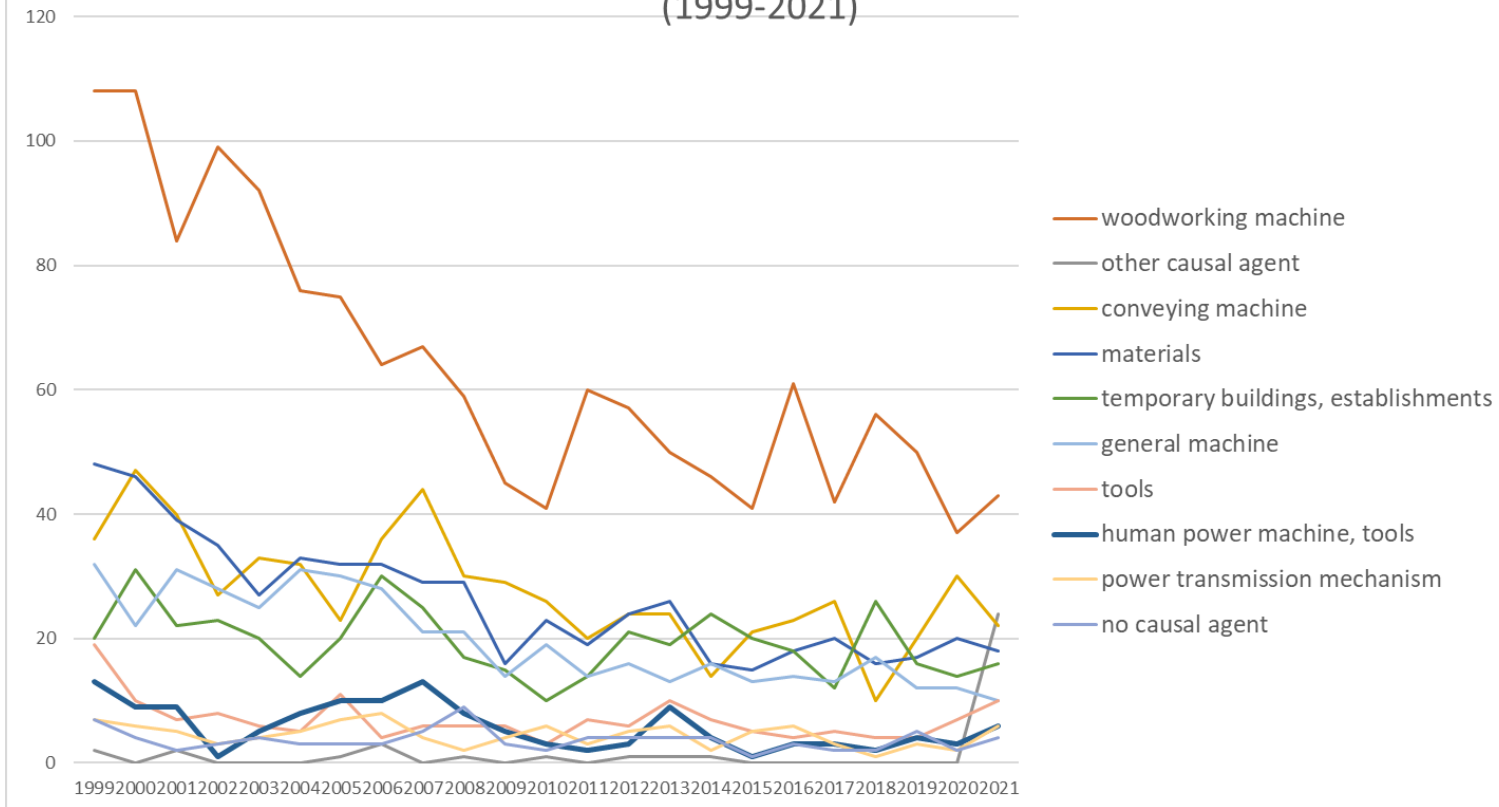


Transition of fatal and non-fatal accidents in each element like as causal agents, type of accidents, etc. in code no. 010402 plywood (1999-2021)



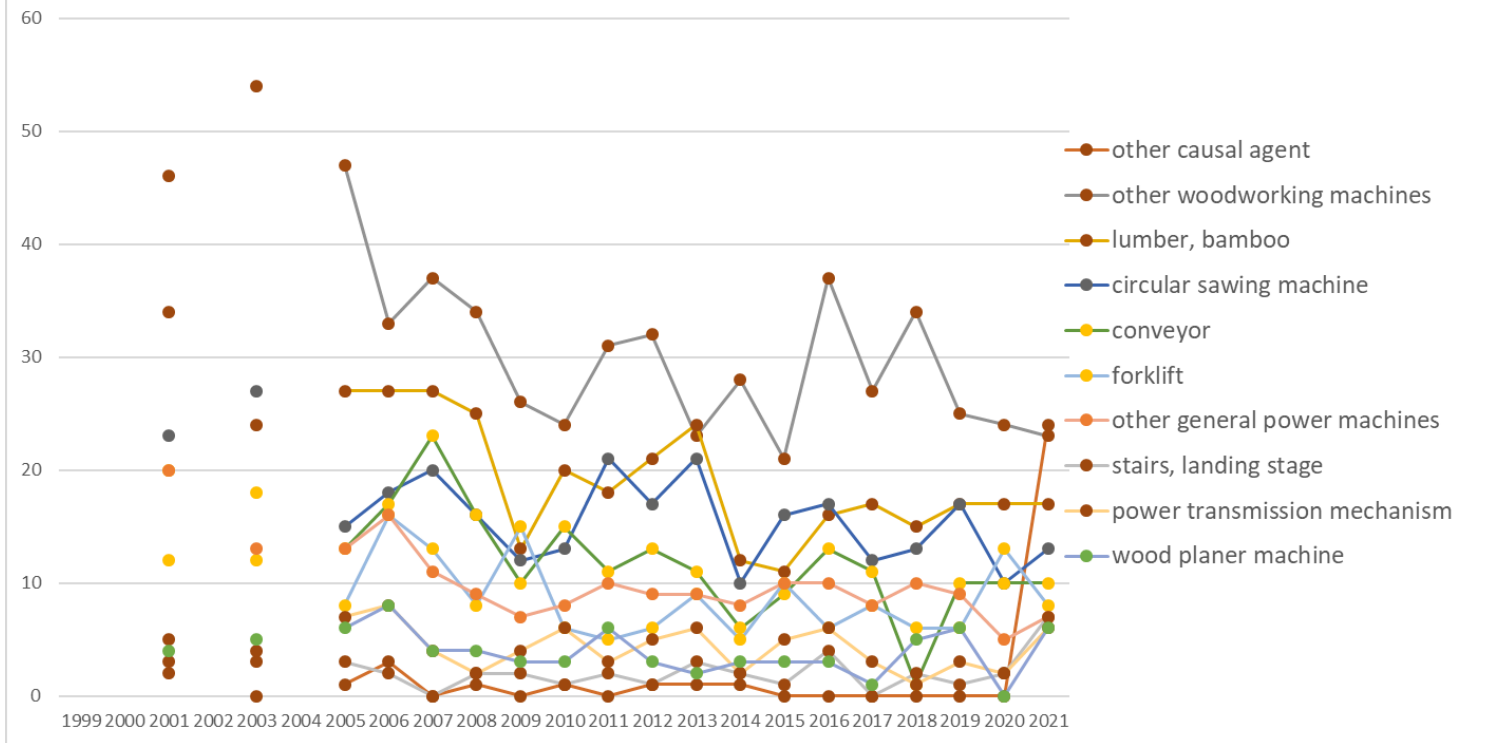
Transition of fatal and non-fatal accidents in large causal agents in code no. 010402 plywood (1999-2021)

Transition of fatal and non-fatal accidents in top 10 middle causal agents
(1999-2021)



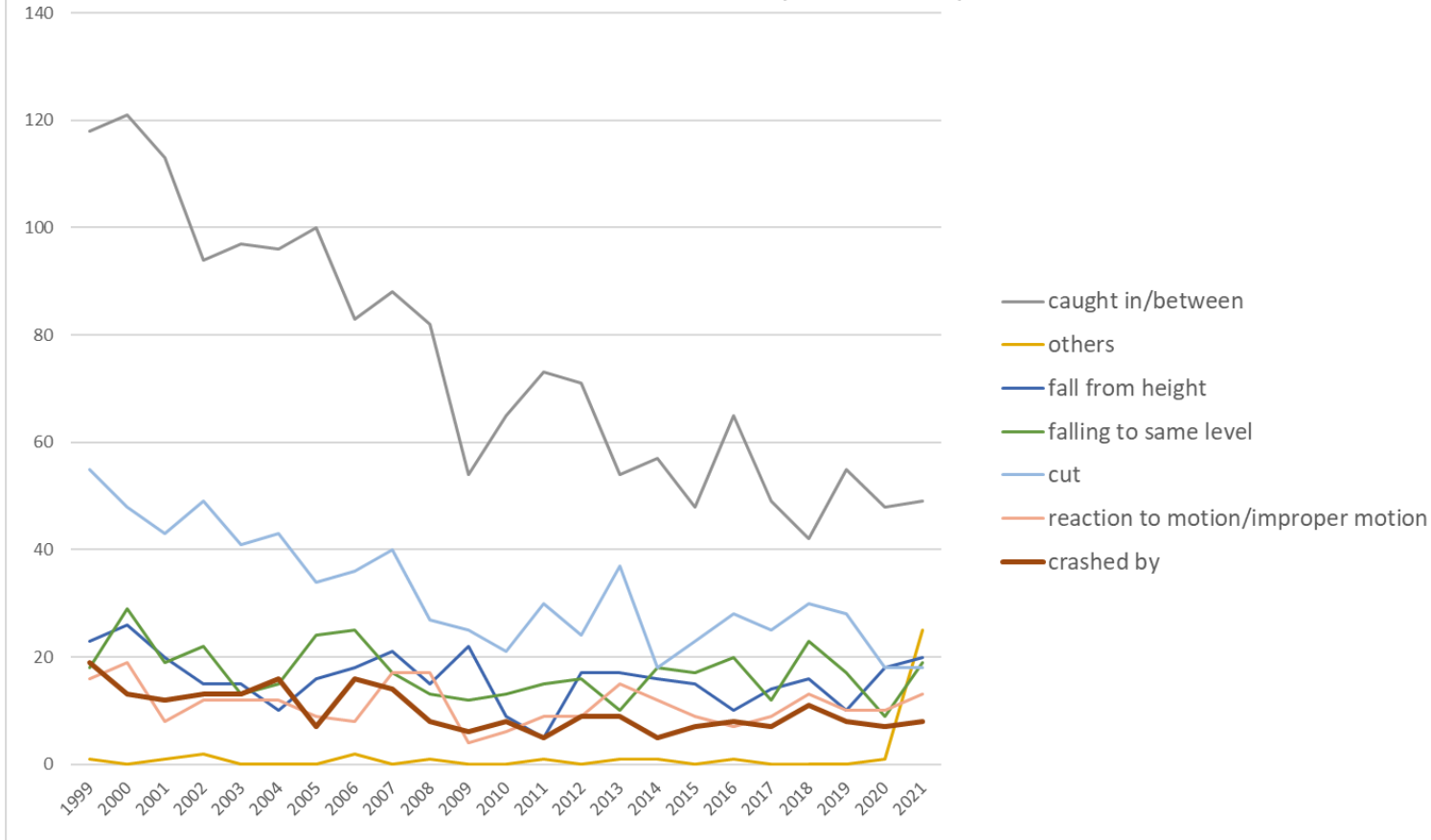
Transition of fatal and non-fatal accidents in middle causal agents in code no. 010402 plywood (1999-2021)

Transition of fatal and non-fatal accidents in top 10 small causal agents (1999-2021)



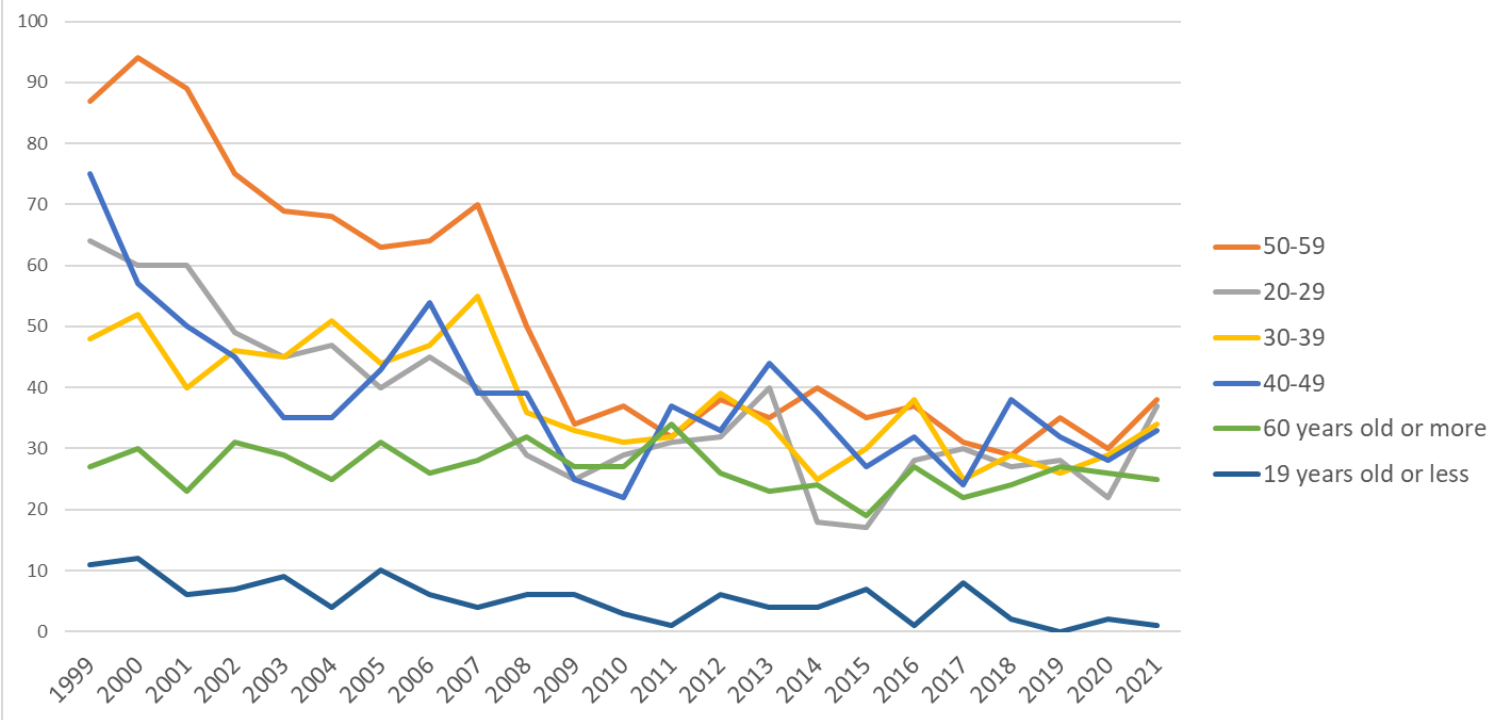
Transition of fatal and non-fatal accidents in small causal agents in code no. 010402 plywood (1999-2021)

Transition of fatal and non-fatal accidents in top 7 type of accidents
(1999-2021)



Transition of fatal and non-fatal accidents in type of accidents in code no. 010402 plywood (1999-2021)

Transition of fatal and non-fatal accidents in workers ages (1999-2021)



Transition of fatal and non-fatal accidents in workers ages in code no. 010402 plywood (1999-2021)

28	Hyogo	2	3	3		2		2	2			4		9	2	4	6	1	3		1	1	1	1	47	Hyogo	
20	Nagano	1	2	1		1		1	2	2	1	2	2	2	1	2	2	2	1	1			3	1	30	Nagano	
25	Shiga	7	1	1		2		4	1	5				1		1			1			1	1	1	27	Shiga	
46	Kagoshima	5	6	2		1		1	1	1	1		2			1	1			1	1	1	1	1	27	Kagoshima	
16	Toyama	4	5	3		1		3	2	3			1			1		1						1	1	26	Toyama
35	Yamaguchi	2	2	3		2				4	2	1	2	1	2	2									1	24	Yamaguchi
4	Miyagi	8	5	3		4		7	18	18	8	6	4	18	4	4	2	1	1	5	5	5	3		129	Miyagi	
13	Tokyo	5	6	4		7		4	6	5	7	2	1	2	3			2	2			2			58	Tokyo	
18	Fukui	5	3	3		1			1	1	1			2	3		1	3	1	2	4	2	2		35	Fukui	
6	Yamagata	1	2	3		2		1	1	3		1	1		2	3	1	2	1	3	2	1	1		31	Yamagata	
14	Kanagawa	1						2	1	1					2				2	2		2			13	Kanagawa	
39	Kochi	1	3	5		1						1						1				1			13	Kochi	
44	Oita							1	1		1					1		3		1	1				9	Oita	
42	Nagasaki		2	1							1	1								1	1				7	Nagasaki	
47	Okinawa		1					1	2			1								1					6	Okinawa	
	total	312	305	268		232		231	242	236	192	150	149	167	174	180	147	135	163	140	149	148	137	168	4,025	total	

Data source : <https://anzeninfo.mhlw.go.jp/user/anzen/tok/anst00.htm>

Return to https://www.jisha.or.jp/english/statistics/202211_23.html