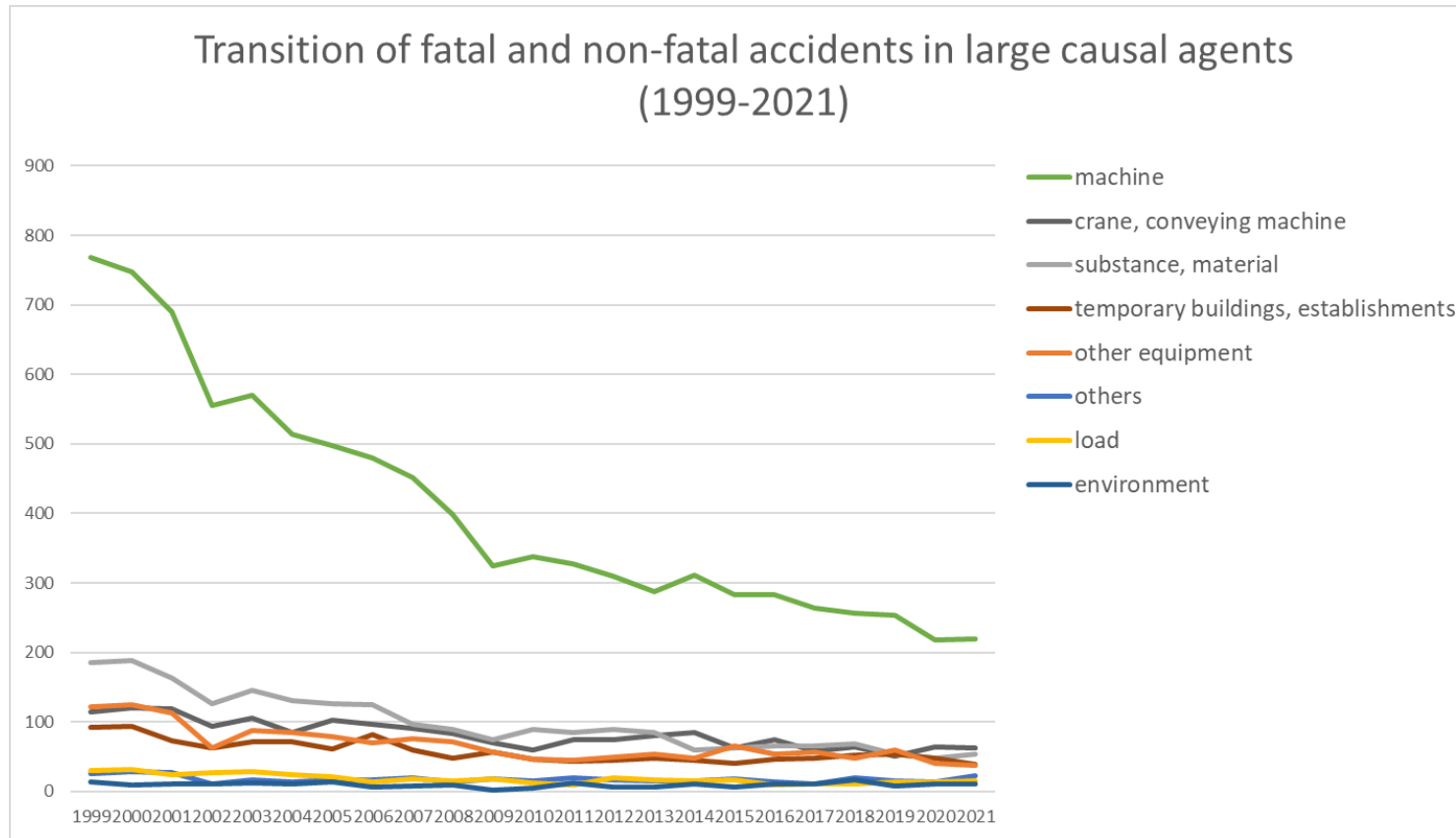
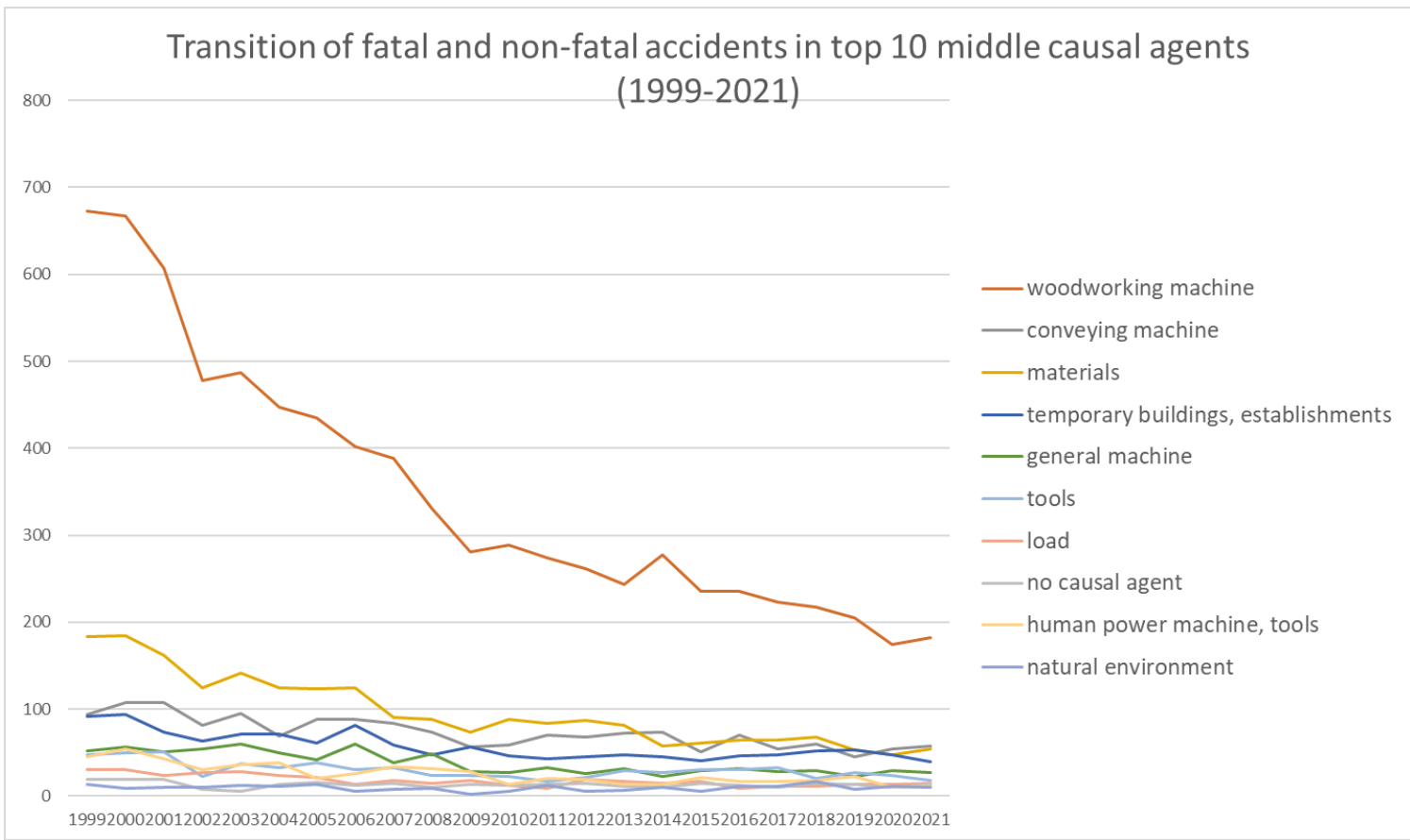


Transition of fatal and non-fatal accidents in each element like as causal agents, type of accidents, etc. in code no. 010409 other lumber and wood products (1999-2021)

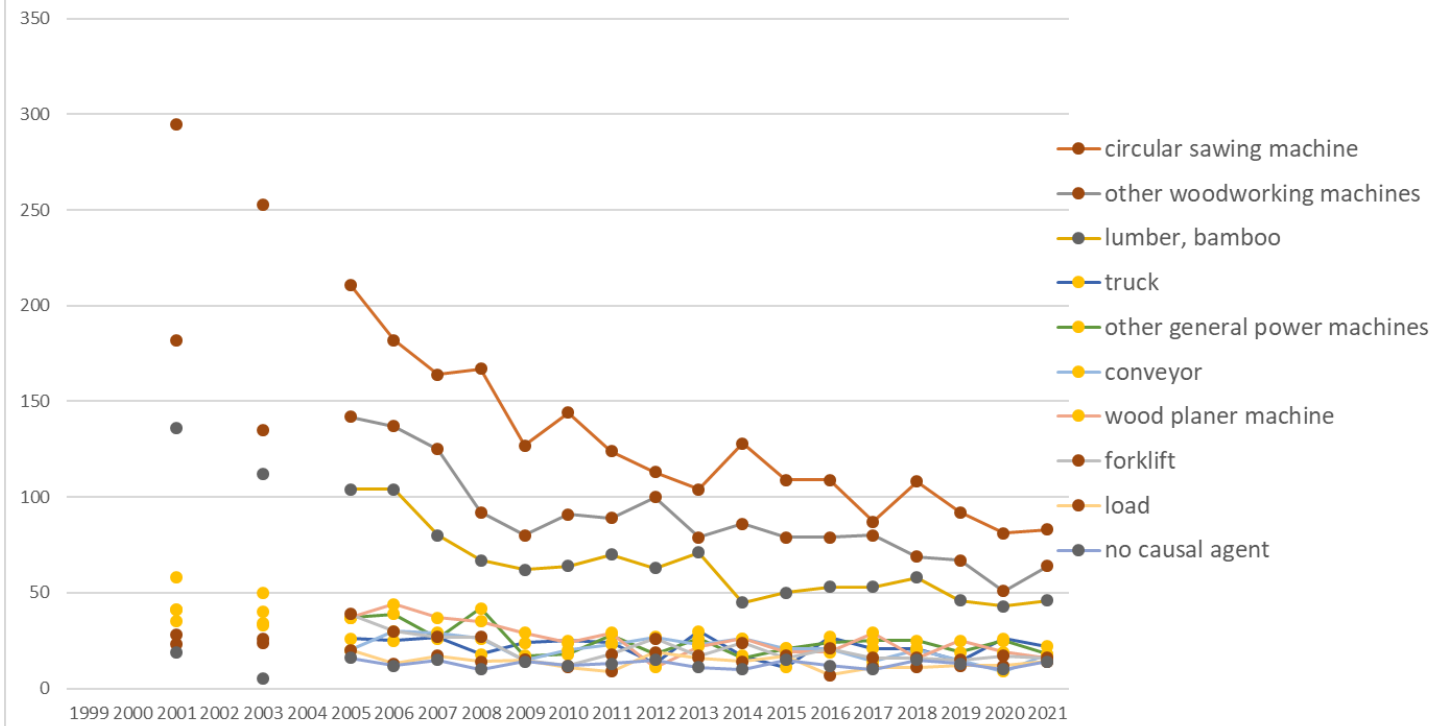


Transition of fatal and non-fatal accidents in large causal agents in code no. 010409 other lumber and wood products (1999-2021)



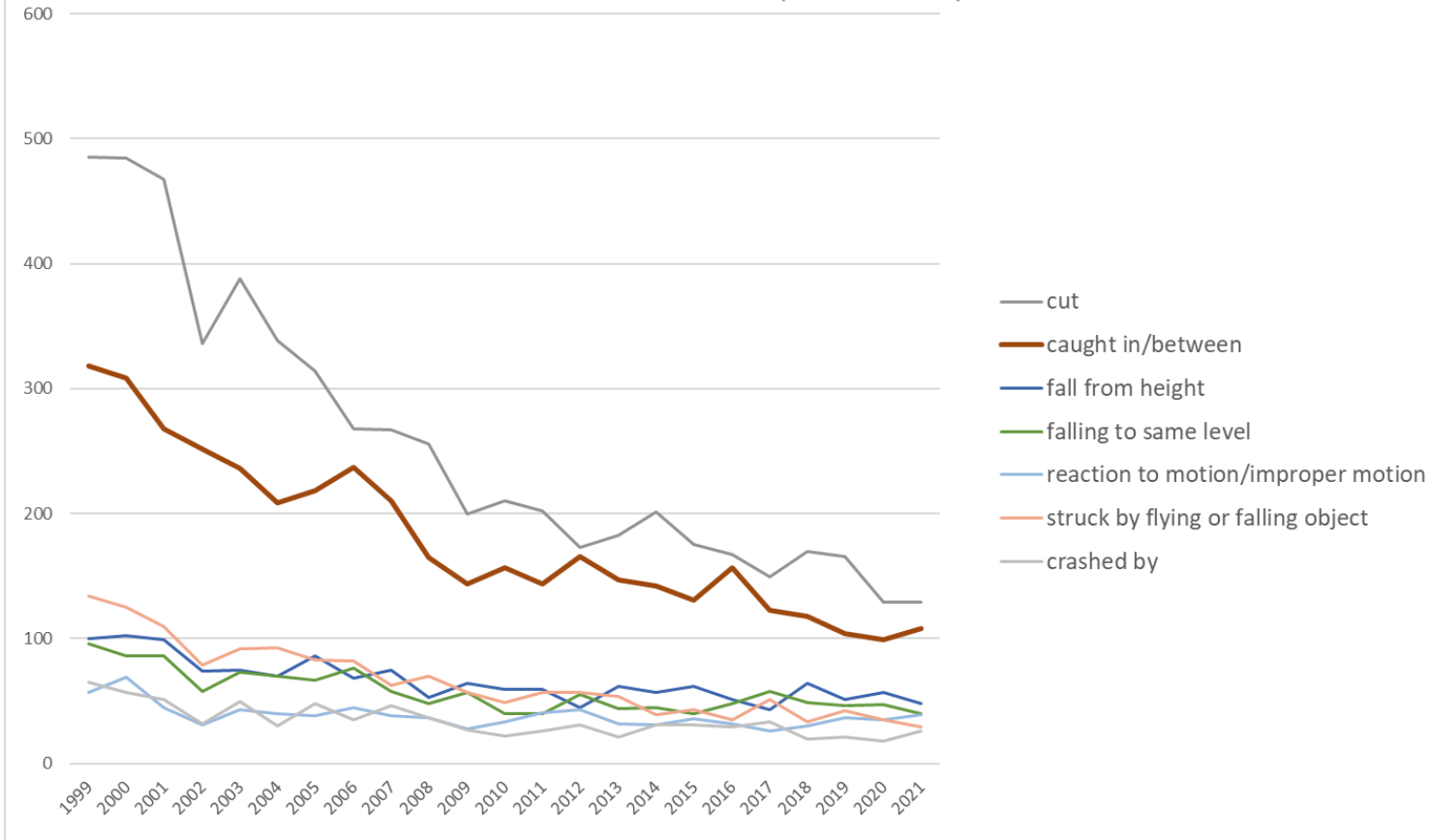
Transition of fatal and non-fatal accidents in middle causal agents in code no. 010409 other lumber and wood products (1999-2021)

Transition of fatal and non-fatal accidents in top 10 small causal agents (1999-2021)



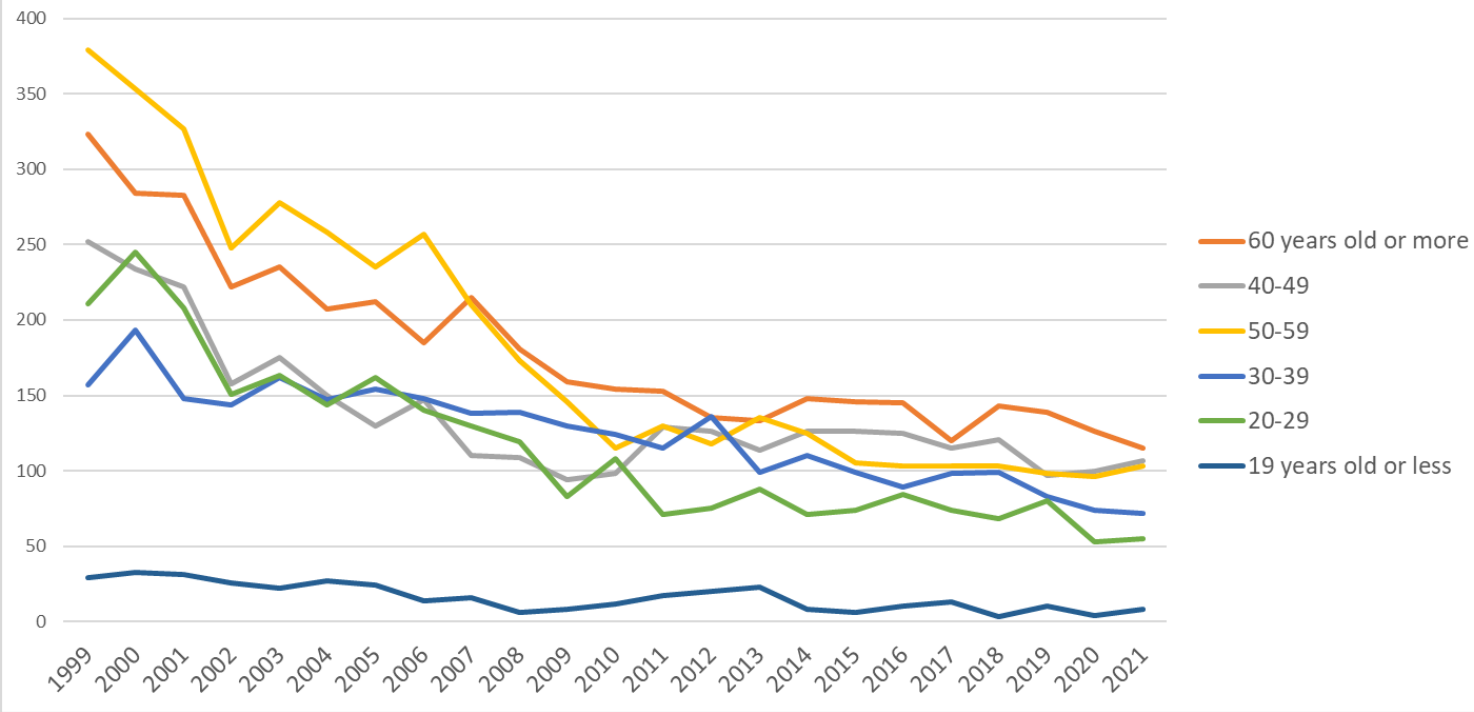
Transition of fatal and non-fatal accidents in small causal agents in code no. 010409 other lumber and wood products (1999-2021)

Transition of fatal and non-fatal accidents in top 7 type of accidents
(1999-2021)



Transition of fatal and non-fatal accidents in type of accidents in code no. 010409 other lumber and wood products (1999-2021)

Transition of fatal and non-fatal accidents in workers ages (1999-2021)



Transition of fatal and non-fatal accidents in workers ages in code no. 010409 other lumber and wood products (1999-2021)

9	September	107	119	88	57	100	78	65	65	60	62	64	54	53	43	42	50	47	48	33	48	36	43	43	1,405	September
7	July	140	113	106	97	76	73	82	74	76	77	51	57	62	46	55	40	49	46	32	50	38	27	41	1,508	July
3	March	113	122	107	78	89	92	82	76	67	67	50	56	70	60	67	53	48	44	56	55	35	36	40	1,563	March
5	May	108	113	105	87	76	68	82	66	80	56	50	46	39	57	46	59	41	43	53	41	49	44	35	1,444	May
6	June	108	109	110	89	95	81	86	95	86	58	47	45	45	47	49	52	57	53	47	46	44	38	34	1,521	June
8	August	111	99	108	74	91	72	86	86	71	63	49	59	44	46	49	38	44	39	47	37	45	39	33	1,430	August
2	February	116	118	95	78	88	79	80	69	59	56	42	46	65	56	37	51	43	49	41	44	53	38	30	1,433	February
11	November	88	113	102	67	78	75	70	70	65	44	41	58	52	61	54	49	45	45	51	43	35	29	28	1,363	November
12	December	115	112	89	76	81	72	54	71	53	52	52	43	52	58	44	56	40	33	43	43	38	38	21	1,336	December
	total	1,351	1,342	1,219	949	1,035	933	917	891	819	727	620	611	615	610	592	588	556	556	523	537	507	453	460	17,411	total

Transition of fatal and non-fatal accidents in prefectures in code no. 010409 other lumber and wood products (1999-2021)

code	Prefecture	1999	2000	2001	2002	2003	2004	2005	2006	2007	2008	2009	2010	2011	2012	2013	2014	2015	2016	2017	2018	2019	2020	2021	total	Prefecture
1	Hokkaido	71	98	63		63		57	62	58	34	37	38	44	30	26	31	31	30	26	27	17	24	35	902	Hokkaido
22	Shizuoka	112	126	104		64		42	46	62	43	41	46	40	35	36	30	34	36	24	39	36	32	28	1,056	Shizuoka
23	Aichi	96	93	92		76		63	52	56	52	47	40	53	40	42	45	27	43	47	38	42	21	23	1,088	Aichi
27	Osaka	102	121	116		76		69	59	70	58	42	43	48	37	38	23	38	31	31	27	35	23	17	1,104	Osaka
11	Saitama	42	49	39		34		45	42	32	30	16	14	15	17	17	31	24	22	20	12	16	15	17	549	Saitama
9	Tochigi	31	32	36		23		22	19	19	25	25	19	12	30	14	20	18	18	7	16	14	22	16	438	Tochigi
12	Chiba	18	30	24		22		23	24	11	10	22	21	22	20	24	9	12	16	17	11	16	11	16	379	Chiba
21	Gifu	52	53	67		40		53	38	34	24	29	26	31	18	29	27	28	19	34	27	27	11	15	682	Gifu
34	Hiroshima	71	70	51		42		38	34	27	27	27	18	15	31	21	17	16	18	18	21	14	12	15	603	Hiroshima
8	Ibaraki	33	30	30		30		31	31	29	16	14	14	15	14	26	20	25	14	17	12	21	16	15	453	Ibaraki
7	Fukushima	27	22	16		17		15	21	11	18	13	8	14	15	12	17	11	13	10	16	8	8	14	306	Fukushima

25	Shiga	18	17	11		16		15	12	13	20	11	10	12	11	10	15	13	7	6	9	16	9	14	265	Shiga
40	Fukuoka	49	41	36		32		24	21	19	20	11	19	11	18	24	26	15	18	11	16	19	12	13	455	Fukuoka
10	Gunma	40	38	23		26		23	18	18	16	12	23	19	20	22	22	12	15	13	16	12	12	12	412	Gunma
35	Yamaguchi	14	16	15		14		17	11	12	7	8	8	7	12	14	6	4	5	4		6	6	12	198	Yamaguchi
28	Hyogo	46	42	45		42		31	30	30	27	28	26	26	30	17	18	20	20	17	20	17	9	11	552	Hyogo
29	Nara	10	20	21		25		11	17	19	16	12	16	8	10	7	16	12	13	11	12	7	13	11	287	Nara
43	Kumamoto	16	17	18		12		9	10	14	6	3	14	10	9	12	11	4	9	12	8	19	9	11	233	Kumamoto
33	Okayama	30	23	25		14		28	7	12	14	9	4	9	13	12	9	6	8	6	12	9	8	10	268	Okayama
46	Kagoshima	19	14	16		13		17	14	14	12	9	7	1	13	10	7	4	8	9	10	14	15	10	236	Kagoshima
16	Toyama	33	28	32		26		20	28	15	15	13	12	13	11	8	15	12	14	9	10	6	8	9	337	Toyama
3	Iwate	13	12	20		12		12	13	10	12	6	6	2	7	6	8	7	8	4	6	4	5	9	182	Iwate
13	Tokyo	48	28	35		28		14	26	17	24	25	14	16	12	12	15	10	12	13	9	12	11	8	389	Tokyo
14	Kanagawa	19	22	27		21		20	18	13	17	10	13	16	12	13	11	11	6	6	21	13	1	8	298	Kanagawa
15	Niigata	25	22	25		21		14	20	12	10	13	10	10	10	9	13	14	12	12	10	6	10	8	286	Niigata
20	Nagano	34	22	17		20		19	21	13	16	7	7	13	5	12	6	7	13	5	9	7	6	8	267	Nagano
26	Kyoto	17	11	7		16		8	10	9	8	10	8	7	7	6	10	9	5	13	9	7	16	8	201	Kyoto
30	Wakayama	17	17	13		16		7	8	14	2	12	12	12	5	7	8	9	6	7	3	8	10	8	201	Wakayama
24	Mie	31	36	32		26		22	22	19	18	13	13	14	9	8	12	16	18	14	11	10	8	7	359	Mie
45	Miyazaki	21	12	18		23		14	19	12	9	15	24	14	25	26	14	20	11	18	8	9	13	7	332	Miyazaki
44	Oita	32	25	22		25		13	12	21	9	13	11	10	5	5	7	15	7	8	9	6	13	7	275	Oita
5	Akita	12	16	6		15		6	13	9	11	2	7	6	3	5	4	3	7	7	10	5	5	7	159	Akita
36	Tokushima	20	19	12		17		17	13	16	12	7	6	8	10	12	3	8	5	6	8	3	5	6	213	Tokushima
38	Ehime	12	22	18		8		13	22	7	7	5	8	5	8	9	8	8	3	11	5	8	5	6	198	Ehime
37	Kagawa	14	15	9		11		8	8	6	7	4	3	7	7	3	5	2	7	4	6	4	4	5	139	Kagawa

4	Miyagi	9	17	27		12		15	11	15	15	5	3	9	6	3	9	4	11	10	10	3	1	4	199	Miyagi
41	Saga	15	8	6		5		6	4	3	8	6	4	5	1	5	5	1	3	1	3	1	4	4	98	Saga
42	Nagasaki	5	2	6		3		6	5	5	5	7	5	1	5	4	4	3	3	4	6	5	4	4	92	Nagasaki
31	Tottori	4	7	2		4			4	3	7	1	6	2	1	3	3	1	3	1	1	3	2	4	62	Tottori
39	Kochi	13	7	7		7		11	7	4	6	5	10	5	8	2	2	10	9	8	5	4	5	3	138	Kochi
17	Ishikawa	13	6	9		6		6	9	5	8	4		4	3	6	9	7	5	3	4	3	5	3	118	Ishikawa
6	Yamagata	4	9	5		7		5	4	6	5		4	4	4	4	5	9	7	6	4	6	5	3	106	Yamagata
19	Yamanashi	7	2	1		6		7	7	4	4	5	3	4	8	4	4	3	4	1	3	2	5	3	87	Yamanashi
18	Fukui	10	7	8		8		7	9	11	7	6	6	7	5	2	2	3	6	3	8	3	3	2	123	Fukui
2	Aomori	15	6	2		6		3	4	3	3	5	1	2	1	1	1	2	2	1	1		3	2	64	Aomori
47	Okinawa	2	4	3		2		3	1	2	2	2	1	3	4	3	3	7	3	2	5	2	4	2	60	Okinawa
32	Shimane	9	8	2		3		8	5	5	5	3		4	5	1	2	1	3	6	4	2	4		80	Shimane
	total	1,351	1,342	1,219		1,035		917	891	819	727	620	611	615	610	592	588	556	556	523	537	507	453	460	15,529	total

Data source : <https://anzeninfo.mhlw.go.jp/user/anzen/tok/anst00.htm>

Return to https://www.jisha.or.jp/english/statistics/202211_23.html