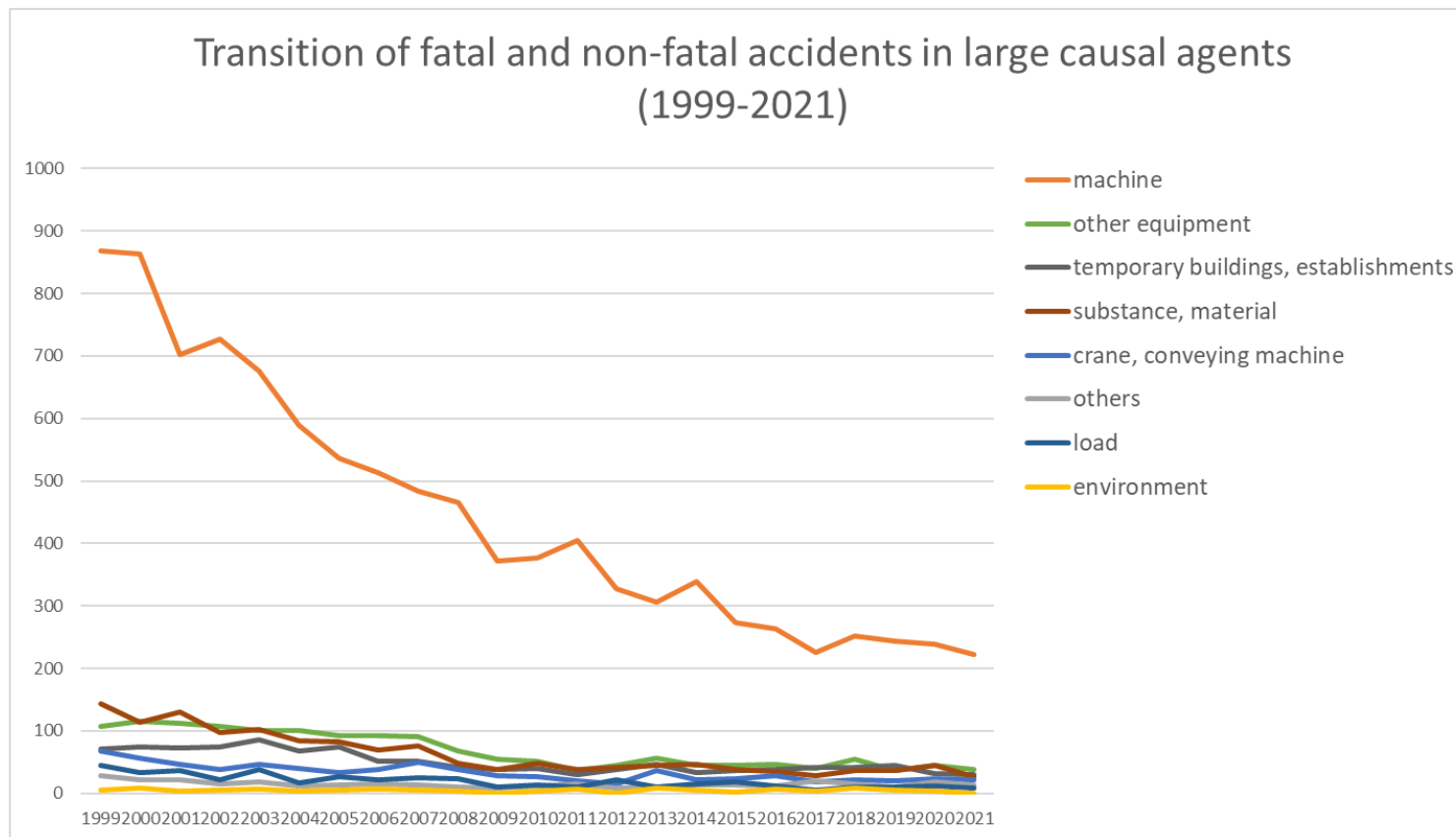
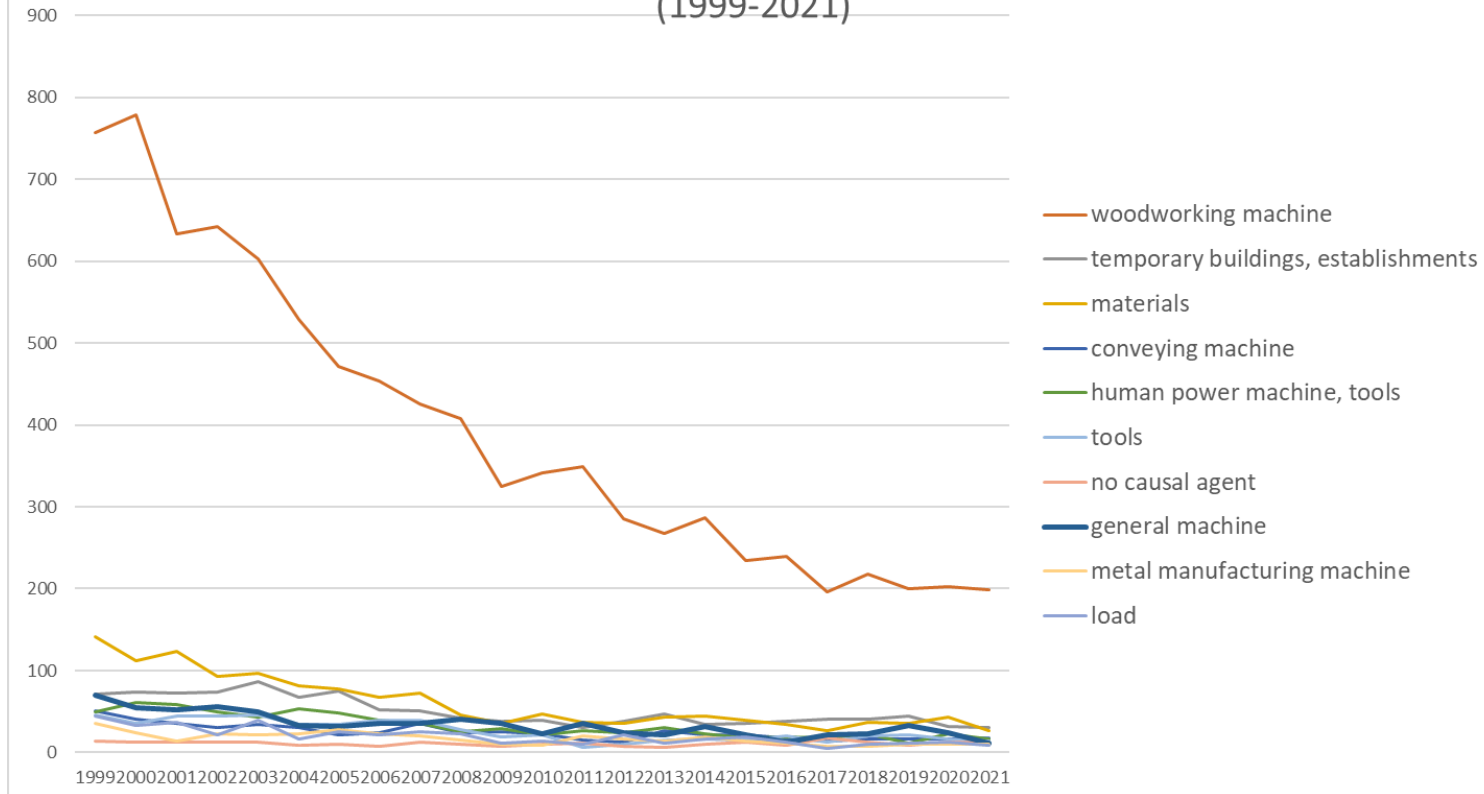


Transition of fatal and non-fatal accidents in each element like as causal agents, type of accidents, etc. in code no. 0105 furniture (1999-2021)



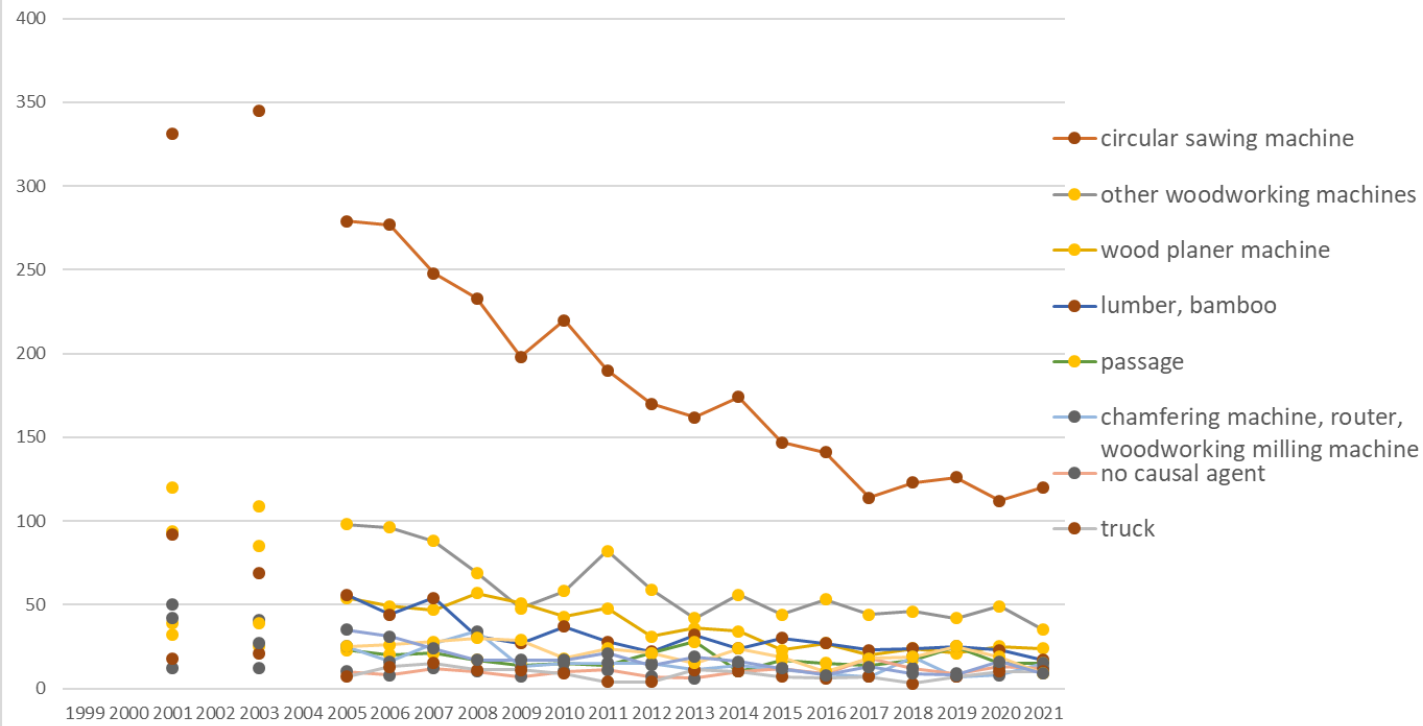
Transition of fatal and non-fatal accidents in large causal agents in code no. 0105 furniture (1999-2021)

Transition of fatal and non-fatal accidents in top 10 middle causal agents
(1999-2021)



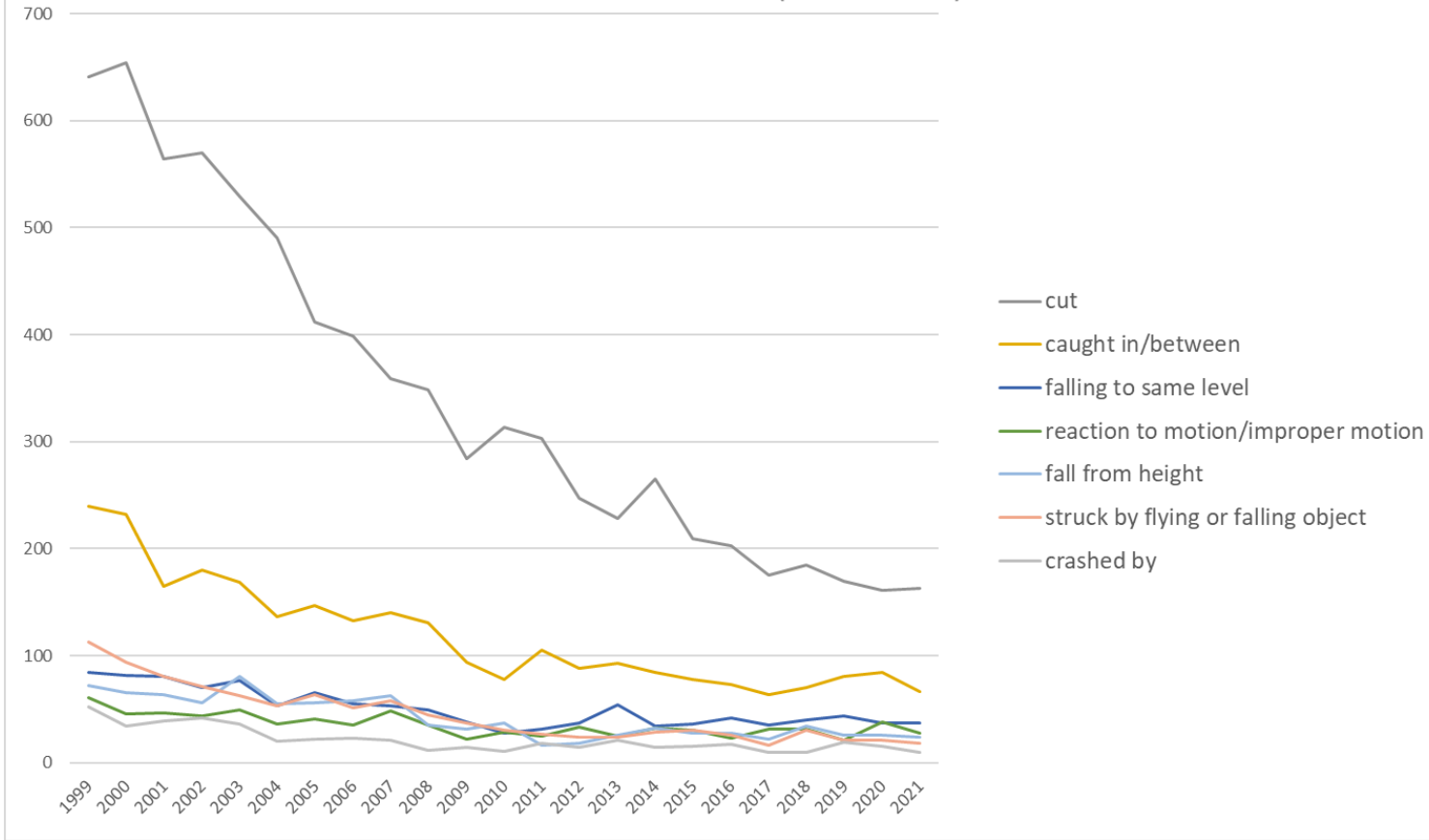
Transition of fatal and non-fatal accidents in middle causal agents in code no. 0105 furniture (1999-2021)

Transition of fatal and non-fatal accidents in top 10 small causal agents (1999-2021)



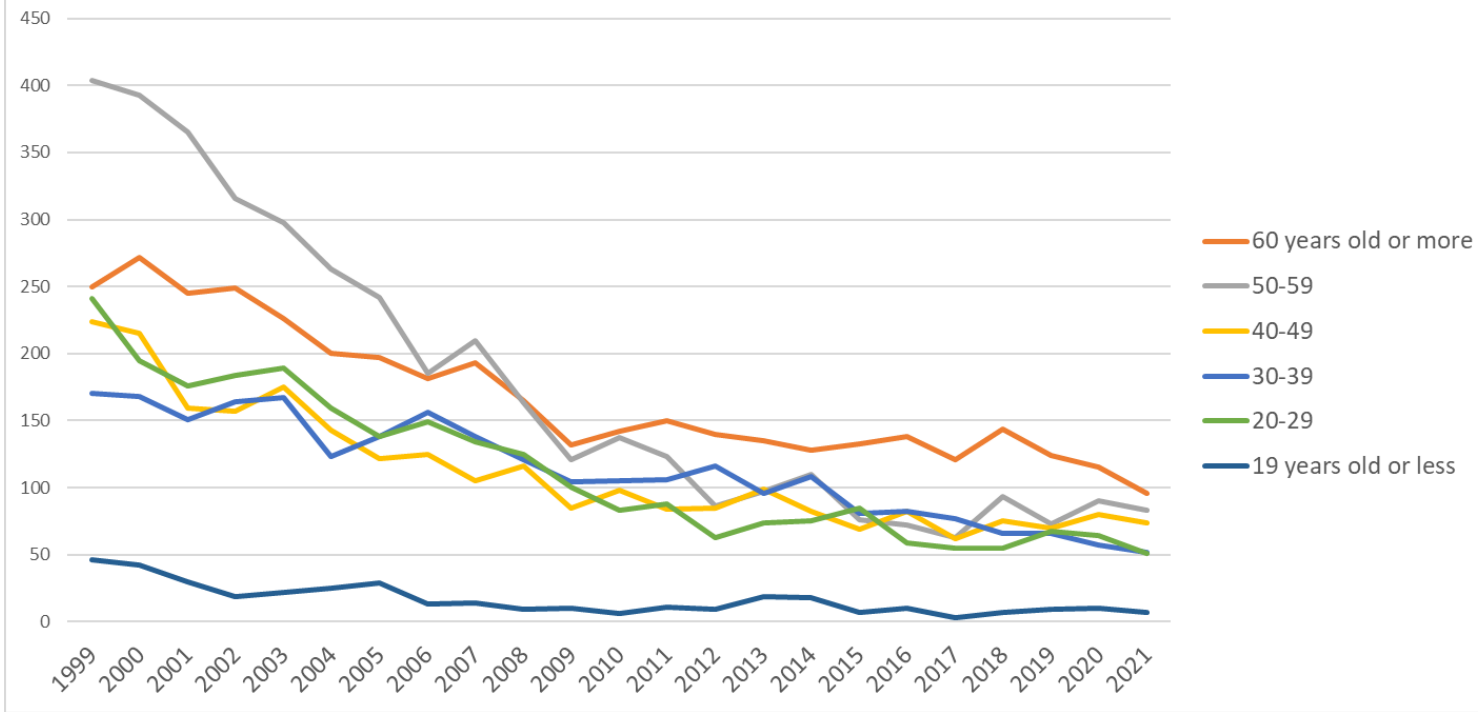
Transition of fatal and non-fatal accidents in small causal agents in code no. 0105 furniture (1999-2021)

Transition of fatal and non-fatal accidents in top 7 type of accidents
(1999-2021)



Transition of fatal and non-fatal accidents in type of accidents in code no. 0105 furniture (1999-2021)

Transition of fatal and non-fatal accidents in workers ages (1999-2021)



Transition of fatal and non-fatal accidents in workers ages in code no. 0105 furniture (1999-2021)

4	40-49	224	215	159	157	175	143	122	125	105	116	85	98	84	85	99	82	69	82	62	75	70	80	74	2,586	40-49
3	30-39	170	168	151	164	167	123	138	156	138	121	104	105	106	116	96	108	81	82	77	66	66	57	52	2,612	30-39
2	20-29	241	195	176	184	189	159	138	149	134	125	100	83	88	63	74	75	85	59	55	55	67	64	51	2,609	20-29
1	19 years old or less	46	42	30	19	22	25	29	13	14	9	10	6	11	9	19	18	7	10	3	7	9	10	7	375	19 years old or less
	total	1,335	1,285	1,126	1,089	1,077	913	866	809	794	699	552	571	562	499	520	521	451	443	381	440	409	416	363	16,121	total

Transition of fatal and non-fatal accidents in workers scales in code no. 0105 furniture (1999-2021)

code	Workers scale	1999	2000	2001	2002	2003	2004	2005	2006	2007	2008	2009	2010	2011	2012	2013	2014	2015	2016	2017	2018	2019	2020	2021	total	Workers scale
1	9 workers or less	585	583	527	501	505	430	420	355	343	325	266	285	258	211	225	218	180	202	158	148	130	150	130	7,135	9 workers or less
2	10-29	430	411	338	326	339	289	270	250	244	228	174	166	168	139	157	164	137	128	120	150	135	135	128	5,026	10-29
3	30-49	148	147	108	109	101	85	83	79	94	50	54	48	59	54	51	45	54	38	47	45	56	61	39	1,655	30-49
5	100-299	62	55	47	44	36	38	34	51	41	35	23	29	32	32	40	39	35	28	22	51	39	34	37	884	100-299
4	50-99	102	84	93	97	87	66	53	66	59	58	31	34	40	49	45	50	41	41	32	35	40	32	26	1,261	50-99
6	300 workers or more	8	5	13	12	9	5	6	8	13	3	4	9	5	14	2	5	4	6	2	11	9	4	3	160	300 workers or more
	total	1,335	1,285	1,126	1,089	1,077	913	866	809	794	699	552	571	562	499	520	521	451	443	381	440	409	416	363	16,121	total

Transition of fatal and non-fatal accidents in months in code no. 0105 furniture (1999-2021)

code	Month	1999	2000	2001	2002	2003	2004	2005	2006	2007	2008	2009	2010	2011	2012	2013	2014	2015	2016	2017	2018	2019	2020	2021	total	Month
6	June	133	95	107	99	87	72	70	73	74	71	55	33	56	42	36	38	39	43	30	33	29	41	42	1,398	June
3	March	119	129	101	111	93	99	78	72	69	70	61	61	55	38	43	58	43	37	42	38	40	44	37	1,538	March
2	February	109	132	82	103	82	62	84	57	70	71	58	63	34	47	41	46	34	51	41	46	37	27	33	1,410	February
7	July	120	108	91	95	95	105	60	68	65	60	42	56	40	48	49	46	41	33	22	42	45	31	33	1,395	July

4	April	103	94	87	87	90	69	69	58	72	61	36	47	39	39	41	36	31	40	34	32	30	29	33	1,257	April
1	January	111	105	96	86	82	67	66	67	63	53	55	37	45	37	46	60	44	34	29	45	38	41	32	1,339	January
9	September	122	126	94	100	84	82	77	65	59	54	44	43	51	48	42	39	34	38	22	27	35	38	29	1,353	September
5	May	94	101	97	101	100	72	78	62	62	51	37	42	40	48	41	59	33	32	24	29	33	21	29	1,286	May
10	October	124	112	88	80	117	68	74	66	75	54	46	47	57	43	38	35	41	35	30	40	34	38	26	1,368	October
11	November	106	88	96	90	84	70	78	75	54	57	34	50	43	33	51	31	41	34	37	44	34	27	26	1,283	November
12	December	93	85	83	64	70	71	59	64	61	55	46	46	44	40	42	26	34	36	37	33	24	38	22	1,173	December
8	August	101	110	104	73	93	76	73	82	70	42	38	46	58	36	50	47	36	30	33	31	30	41	21	1,321	August
	total	1,335	1,285	1,126	1,089	1,077	913	866	809	794	699	552	571	562	499	520	521	451	443	381	440	409	416	363	16,121	total

Transition of fatal and non-fatal accidents in prefectures in code no. 0105 furniture (1999-2021)

code	Prefecture	1999	2000	2001	2002	2003	2004	2005	2006	2007	2008	2009	2010	2011	2012	2013	2014	2015	2016	2017	2018	2019	2020	2021	total	Prefecture
40	Fukuoka	117	116	100		97		65	69	54	53	44	38	44	29	45	38	24	26	26	30	34	34	32	1,115	Fukuoka
27	Osaka	75	59	46		64		54	44	29	39	22	38	32	26	38	27	24	28	14	16	23	20	23	741	Osaka
1	Hokkaido	69	79	68		49		42	39	46	31	21	40	36	19	21	20	18	25	20	20	21	7	20	711	Hokkaido
21	Gifu	61	55	45		33		32	50	47	34	38	29	25	28	26	27	31	18	20	27	23	23	20	692	Gifu
22	Shizuoka	86	72	62		53		48	49	38	35	35	26	40	25	23	42	31	27	18	23	14	18	16	781	Shizuoka
23	Aichi	64	69	63		48		51	44	50	37	26	40	33	19	24	24	21	26	23	17	21	27	14	741	Aichi
34	Hiroshima	61	63	58		42		30	38	29	19	25	24	23	21	14	27	14	14	13	19	22	16	14	586	Hiroshima
28	Hyogo	45	32	23		29		19	33	35	18	22	17	17	12	10	11	8	8	12	11	9	14	13	398	Hyogo
33	Okayama	19	16	12		24		13	13	21	17	10	10	9	11	7	9	6	9	11	5	7	6	13	248	Okayama
11	Saitama	46	47	46		34		46	33	59	45	36	24	22	28	20	27	25	13	24	34	17	21	11	658	Saitama
15	Niigata	33	45	36		33		25	17	20	17	19	22	16	14	20	13	11	20	22	13	7	15	11	429	Niigata
41	Saga	16	19	13		16		9	14	11	13	5	11	15	8	11	7	8	10	8	7	7	8	10	226	Saga

36	Tokushima	63	50	41		34		38	27	17	25	14	16	21	23	19	17	20	12	14	19	7	14	9	500	Tokushima
30	Wakayama	36	43	29		34		28	28	26	29	19	15	25	17	21	17	15	9	12	14	4	15	9	445	Wakayama
14	Kanagawa	26	25	22		12		17	16	12	10	8	9	8	11	12	15	4	5	5	11	8	9	9	254	Kanagawa
5	Akita	14	24	13		9		6	13	12	12	7	11	7	8	5	11	10	7	5	4	6	6	9	199	Akita
29	Nara	11	15	10		8		14	5	7	11	12	7	9	9	8	5	13	13	8	3	6	5	9	188	Nara
10	Gunma	47	37	41		33		32	26	21	24	21	21	9	17	23	12	18	15	11	17	10	20	7	462	Gunma
13	Tokyo	35	30	36		43		29	21	21	25	29	18	14	13	13	10	13	11	14	9	11	8	7	410	Tokyo
37	Kagawa	32	26	15		19		10	13	17	14	12	8	6	11	10	10	6	5	4	6	5	2	7	238	Kagawa
20	Nagano	20	18	24		18		17	13	8	8	8	10	7	7	7	10	12	8	4	9	9	7	7	231	Nagano
18	Fukui	14	12	16		11		8	11	5	8	9	6	3	5	7	4	3	5	6	13	7	7	7	167	Fukui
16	Toyama	10	12	15		18		9	2	9	2	6	4	5	9	7	5	4	7	3	2	7	4	7	147	Toyama
9	Tochigi	36	30	35		33		24	8	13	11	9	11	13	13	11	10	7	9	9	15	9	12	6	324	Tochigi
6	Yamagata	30	18	24		25		14	19	18	10	5	6	9	9	10	9	14	9	3	8	11	10	6	267	Yamagata
7	Fukushima	8	26	14		21		13	14	20	11	4	9	11	11	7	8	13	11	7	5	15	7	6	241	Fukushima
44	Oita	17	15	18		16		17	16	17	17	6	9	8	9	9	10	5	6	5	13	10	7	6	236	Oita
8	Ibaraki	13	12	7		8		3	10	13	8	8	2	4	4	6	11	4	6	2	4	7	10	6	148	Ibaraki
25	Shiga	13	6	9		4		4	8	9	7	5	8	4	8	3	7	6	5	2	1	3	3	6	121	Shiga
3	Iwate	9	10	10		15		7	8	5	8	5	4	6	5	3	5	3	4	2	5	4	3	5	126	Iwate
43	Kumamoto	11	14	9		16		10	4	6	6	3	3	2	2	3	3	1	3	2		2	1	5	106	Kumamoto
39	Kochi	14	20	18		22		7	4	6	10	6	9	4	3	9	6	3	7	8	3	3	2	4	168	Kochi
24	Mie	22	19	12		15		14	13	12	18	6	13	5	9	7	6	8	6	9	10	6	7	3	220	Mie
38	Ehime	19	10	12		12		10	8	6	7	4	6	7	6	1	3	3	5	3	1	6	5	3	137	Ehime
35	Yamaguchi	12	14	9		12		12	6	3	7	5	3	8	4	4	4	7	2	3		7	4	3	129	Yamaguchi
46	Kagoshima	12	10	4		13		10	3	9	5	3	1	2	2	10	4	3	7	3	4	3	5	3	116	Kagoshima

2	Aomori	4	8	10		7		5	4	3	2	1	4	4	2	4	6	2	1	3	6		1	3	80	Aomori
26	Kyoto	12	17	18		12		13	9	8	7	7	3	7	4	4	5	4	8	8	3		3	2	154	Kyoto
12	Chiba	17	14	12		12		5	8	11	2	6	6	5	5	8	9	6	6	4	4	5	3	2	150	Chiba
17	Ishikawa	15	10	17		4		11	8	7	9	2	8	11	8	3	5	2	4	3		1	7	2	137	Ishikawa
4	Miyagi	9	13	7		13		15	8	6	5	2	4	7	1	8	4	4	3		6	5		2	122	Miyagi
42	Nagasaki	12	7	12		13		5	4	7	5	4	3	6	2	2	1	4	2	2	6	4	5	2	108	Nagasaki
45	Miyazaki	15	15	5		8		11	10	6	6	2	6	2	10	4	6	5	11	1	1	9	9	1	143	Miyazaki
19	Yamanashi	6	6	7		5		1	1	3	3	1	2	3	4	5	2	2	2		5	4	1	1	64	Yamanashi
47	Okinawa	6	6	8		8		4	7	2	2	2	3	4	2	1	1	1	2		2	2		1	64	Okinawa
31	Tottori	7	4	3		8		3	6	2	3	3	1	1	1	2	3	2	1			4	2	1	57	Tottori
32	Shimane	16	17	12		14		6	5	8	4	5	3	3	5	5	5	3	2	5	9	4	3		134	Shimane
	total	1,335	1,285	1,126		1,077		866	809	794	699	552	571	562	499	520	521	451	443	381	440	409	416	363	14,119	total

Data source : <https://anzeninfo.mhlw.go.jp/user/anzen/tok/anst00.htm>

Return to https://www.jisha.or.jp/english/statistics/202211_23.html