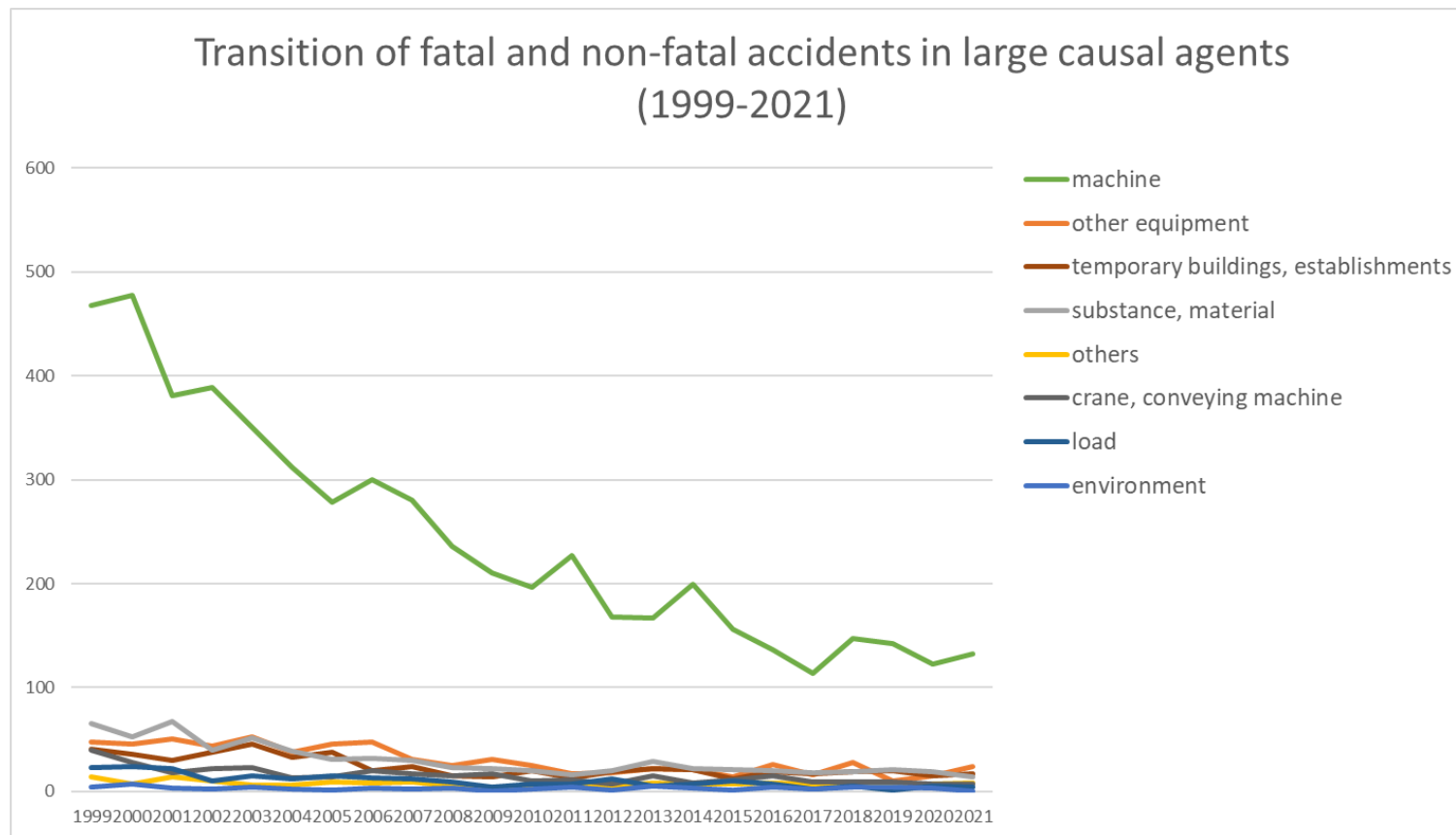
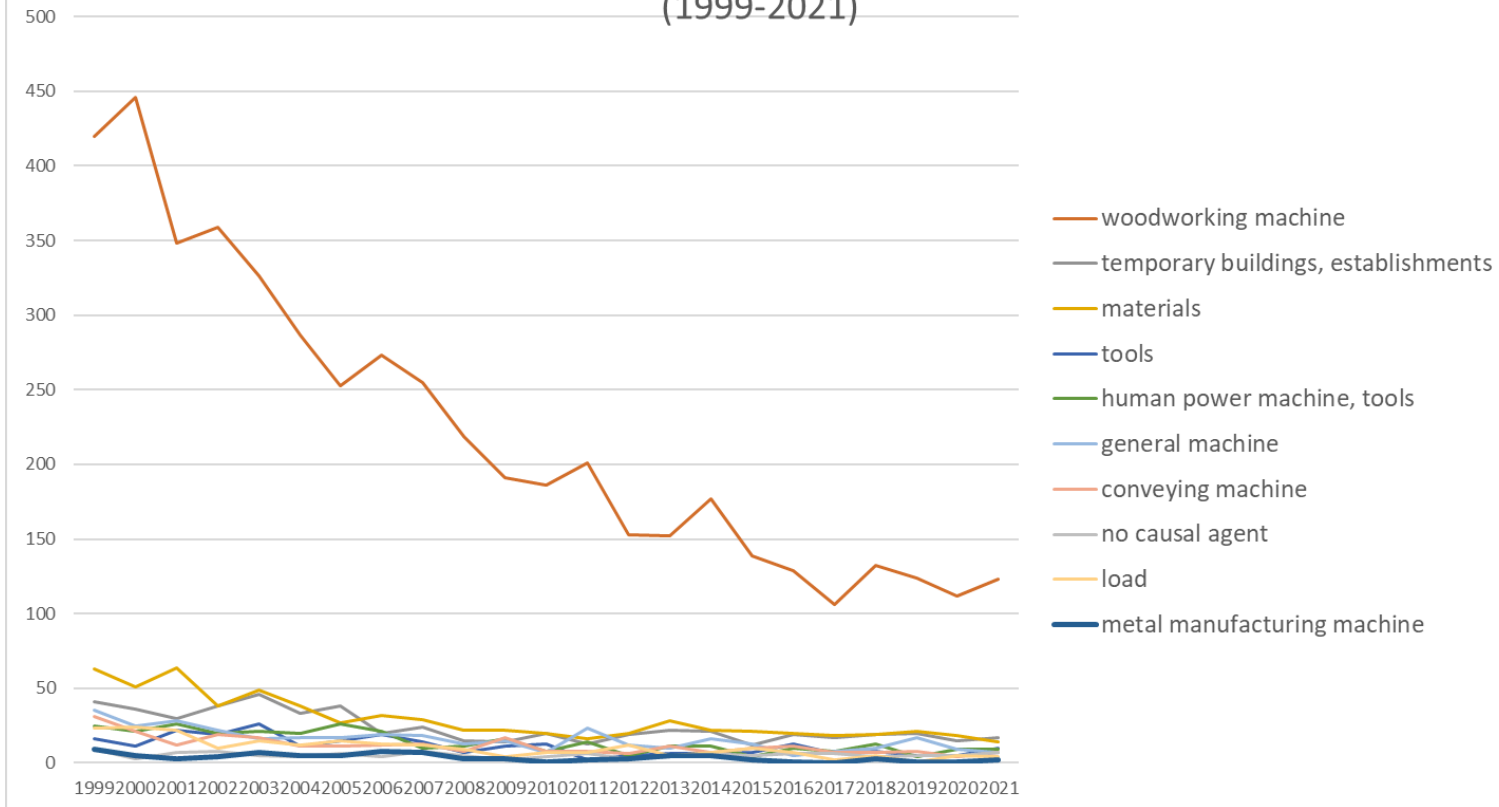


Transition of fatal and non-fatal accidents in each element like as causal agents, type of accidents, etc. in code no. 010501 wood furniture (1999-2021)



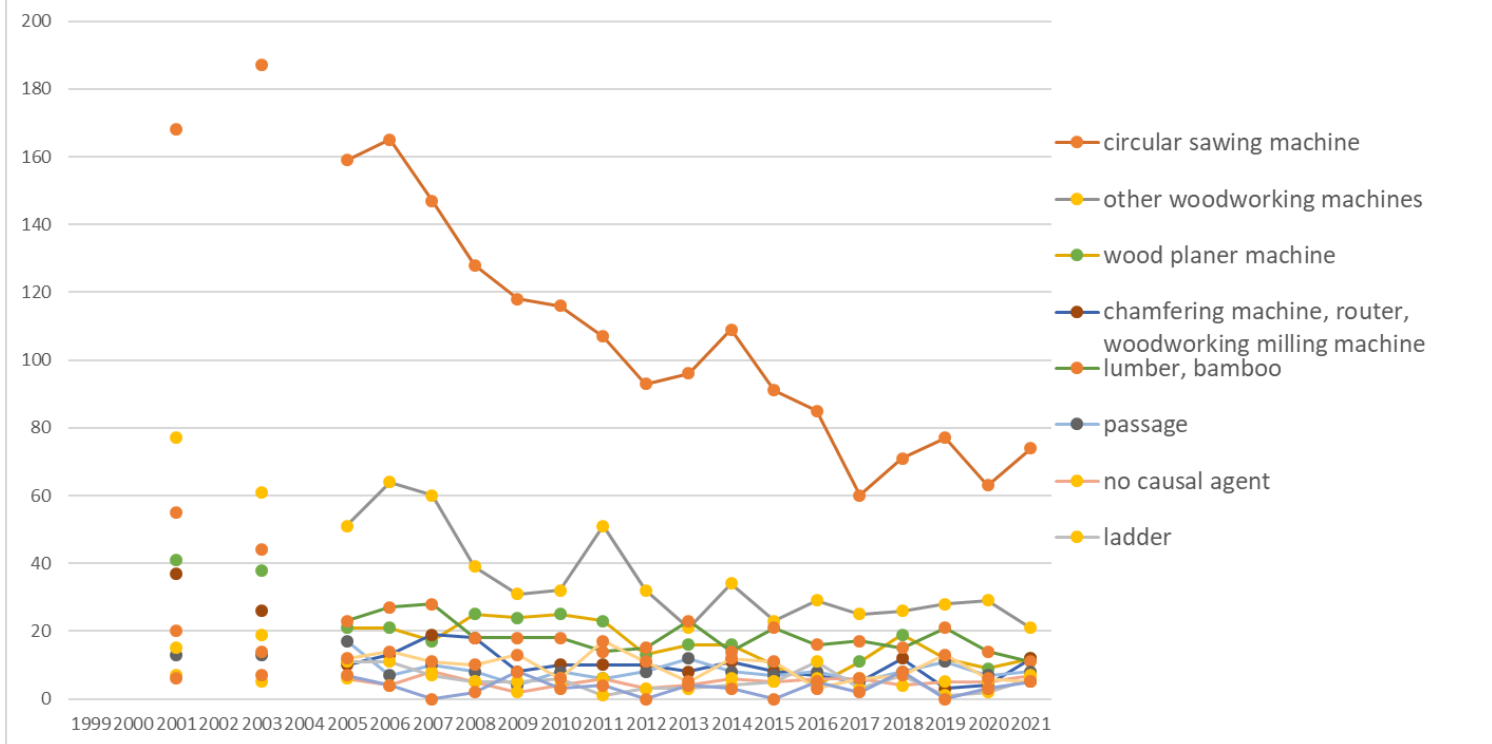
Transition of fatal and non-fatal accidents in large causal agents in code no. 010501 wood furniture (1999-2021)

Transition of fatal and non-fatal accidents in top 10 middle causal agents
(1999-2021)



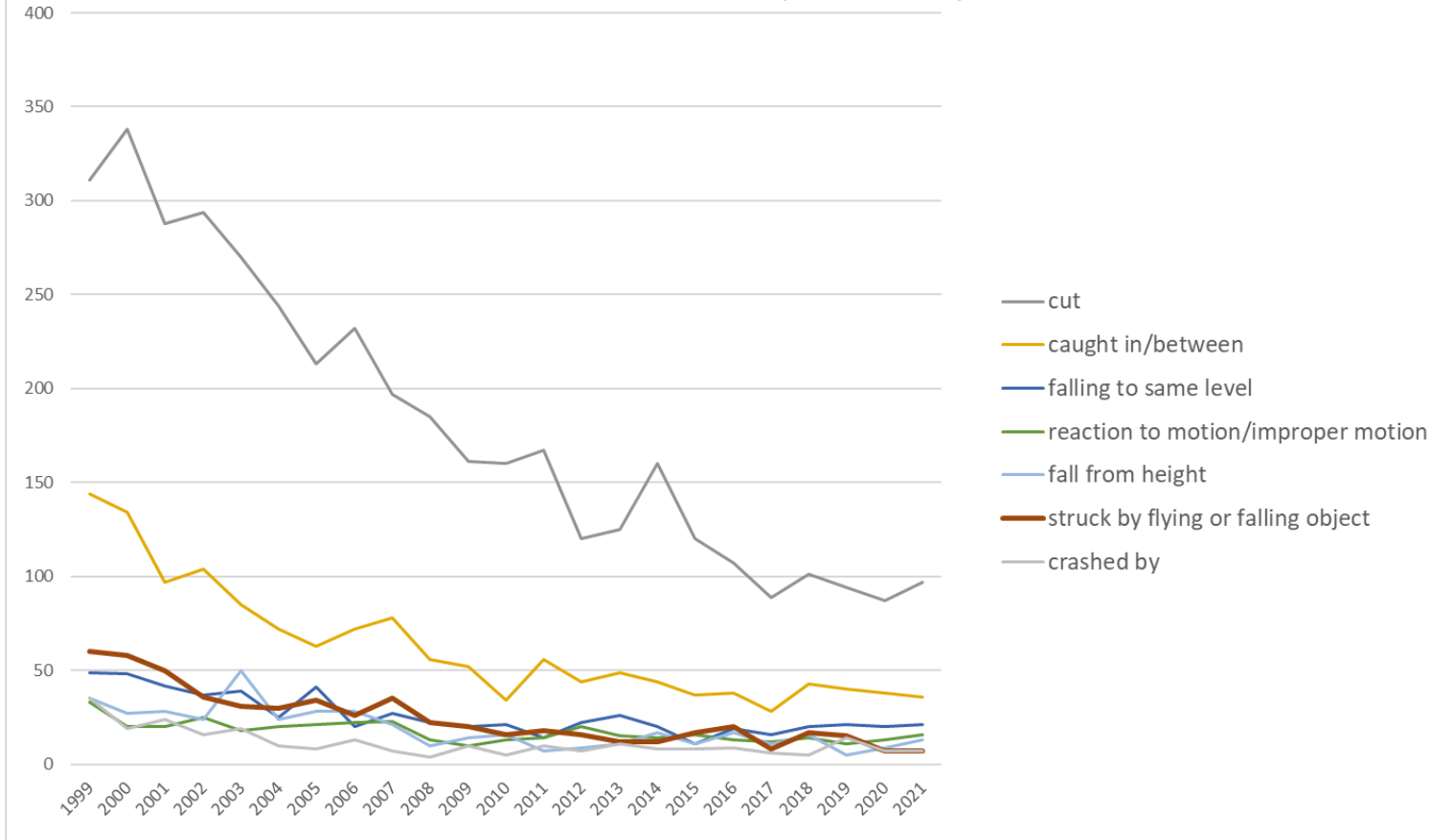
Transition of fatal and non-fatal accidents in middle causal agents in code no. 010501 wood furniture (1999-2021)

Transition of fatal and non-fatal accidents in top 10 small causal agents (1999-2021)



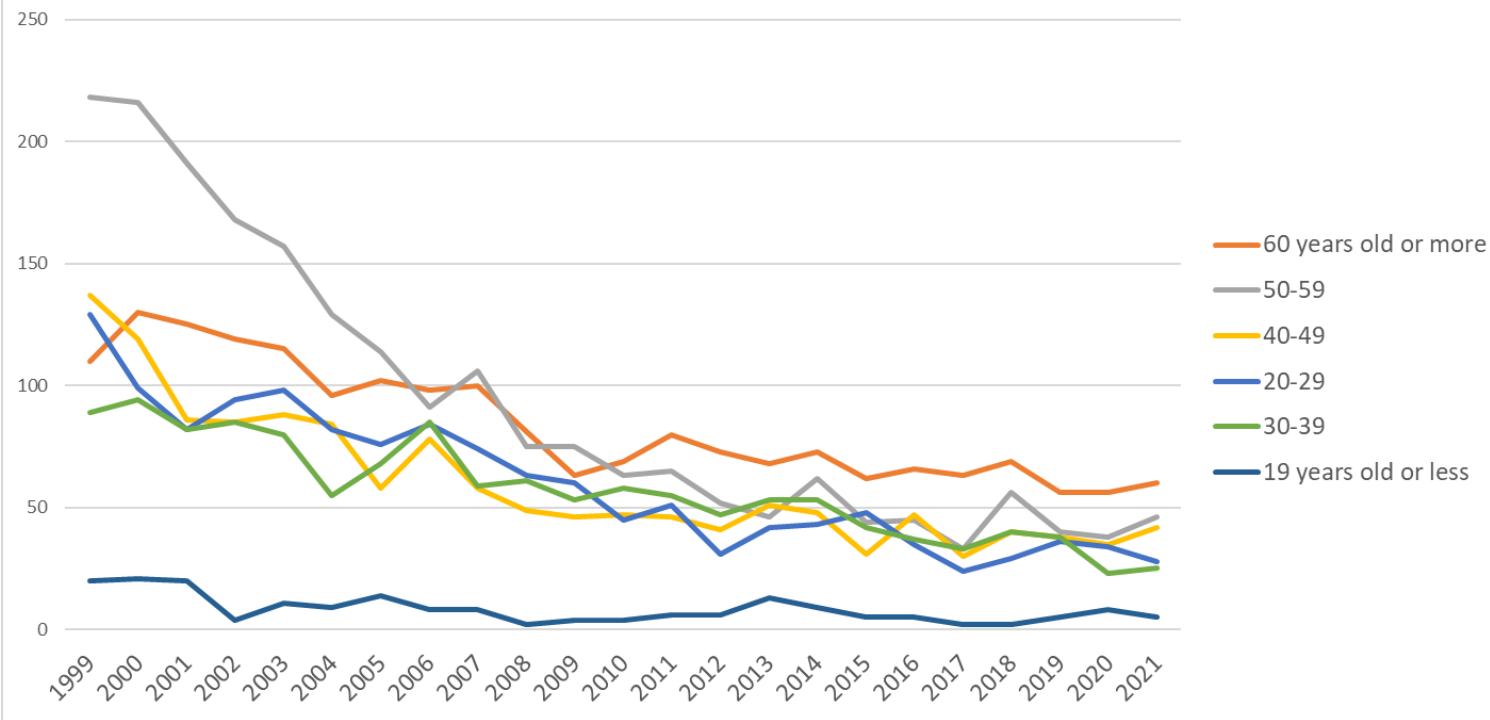
Transition of fatal and non-fatal accidents in small causal agents in code no. 010501 wood furniture (1999-2021)

Transition of fatal and non-fatal accidents in top 7 type of accidents
(1999-2021)



Transition of fatal and non-fatal accidents in type of accidents in code no. 010501 wood furniture (1999-2021)

Transition of fatal and non-fatal accidents in workers ages (1999-2021)



Transition of fatal and non-fatal accidents in workers ages in code no. 010501 wood furniture (1999-2021)

06	crashed by	35	19	24	16	19	10	8	13	7	4	10	5	10	7	11	8	8	9	6	5	14	7	7	262	crashed by	
03	crash	7	8	8	6	8	15	4	12	4	7	3	10	3	3	6	6	3	2	3	4	5	5	4	136	crash	
05	collapse	9	11	15	3	15	8	12	11	7	4	8	11	8	6	8	6	7	3	6	6	5	3	3	175	collapse	
11	contact to high/low-temperature	4	8	5	6	5	4	2	1	1	3	3		1	2	4		2	4	2	6	1		1	65	contact to high/low-temperature	
13	electric shock														1	1								1	1	4	electric shock
17	traffic accident (public road)	9	3	2	3	2		1	3	2	3			2		4			2	3	2		2		43	traffic accident (public road)	
90	others	2	1	3		5		1	1	1	1			1					1			2	1		20	others	
12	contact to harmful substance		1	1		1		1		1	1												1		7	contact to harmful substance	
14	explosion	1		2					2	1						1									7	explosion	
99	unclassifiable	1		1		1	1	2											1						7	unclassifiable	
09	injury to the sole of the foot		1				2		1								1				1				6	injury to the sole of the foot	
16	fire		2		1			1																	4	fire	
10	drown													2											2	drown	
15	burst	1																			1				2	burst	
18	traffic accident (others)	2																							2	traffic accident (others)	
	total	703	679	586	555	549	455	432	444	405	331	301	286	303	250	273	288	232	235	185	236	213	194	206	8,341	total	

code	Age	1999	2000	2001	2002	2003	2004	2005	2006	2007	2008	2009	2010	2011	2012	2013	2014	2015	2016	2017	2018	2019	2020	2021	total	Age
6	60 years old or more	110	130	125	119	115	96	102	98	100	81	63	69	80	73	68	73	62	66	63	69	56	56	60	1,934	60 years old or more
5	50-59	218	216	191	168	157	129	114	91	106	75	75	63	65	52	46	62	44	45	33	56	40	38	46	2,130	50-59
4	40-49	137	119	86	85	88	84	58	78	58	49	46	47	46	41	51	48	31	47	30	40	38	35	42	1,384	40-49
2	20-29	129	99	82	94	98	82	76	84	74	63	60	45	51	31	42	43	48	35	24	29	36	34	28	1,387	20-29
3	30-39	89	94	82	85	80	55	68	85	59	61	53	58	55	47	53	53	42	37	33	40	38	23	25	1,315	30-39
1	19 years old or less	20	21	20	4	11	9	14	8	8	2	4	4	6	6	13	9	5	5	2	2	5	8	5	191	19 years old or less
	total	703	679	586	555	549	455	432	444	405	331	301	286	303	250	273	288	232	235	185	236	213	194	206	8,341	total

Transition of fatal and non-fatal accidents in workers scales in code no. 010501 wood furniture (1999-2021)

code	Workers scale	1999	2000	2001	2002	2003	2004	2005	2006	2007	2008	2009	2010	2011	2012	2013	2014	2015	2016	2017	2018	2019	2020	2021	total	Workers scale
2	10-29	234	226	186	175	180	158	152	144	130	118	105	89	103	74	97	97	79	75	67	89	81	74	82	2,815	10-29
1	9 workers or less	274	260	244	216	240	182	190	187	167	134	127	139	126	96	103	113	98	95	71	75	58	64	64	3,323	9 workers or less
3	30-49	91	103	58	68	53	49	43	43	56	34	35	25	33	33	33	25	27	26	22	25	32	26	26	966	30-49
5	100-299	45	36	28	22	21	25	23	30	18	17	12	17	19	17	17	18	13	15	9	23	18	9	18	470	100-299
4	50-99	58	53	67	68	50	40	23	38	31	28	22	13	21	28	22	32	15	22	16	21	23	20	16	727	50-99
6	300 workers or more	1	1	3	6	5	1	1	2	3			3	1	2	1	3		2		3	1	1		40	300 workers or more
	total	703	679	586	555	549	455	432	444	405	331	301	286	303	250	273	288	232	235	185	236	213	194	206	8,341	total

Transition of fatal and non-fatal accidents in months in code no. 010501 wood furniture (1999-2021)

code	Month	1999	2000	2001	2002	2003	2004	2005	2006	2007	2008	2009	2010	2011	2012	2013	2014	2015	2016	2017	2018	2019	2020	2021	total	Month
6	June	72	50	55	51	44	33	35	42	39	35	25	9	26	14	18	18	20	30	14	14	10	23	25	702	June

3	March	60	63	55	49	52	43	44	40	36	27	26	31	27	20	24	30	21	18	19	28	22	22	23	780	March
4	April	56	55	44	47	46	33	34	32	38	30	18	24	22	21	16	21	14	23	13	18	16	14	22	657	April
7	July	68	55	52	49	46	50	28	33	24	32	27	33	26	26	27	26	23	19	10	20	22	16	20	732	July
9	September	63	72	49	53	39	38	39	36	36	26	21	24	32	23	26	23	20	14	14	19	18	15	20	720	September
1	January	66	58	50	43	48	40	28	39	25	26	36	20	24	17	27	38	23	12	19	24	16	19	20	718	January
5	May	53	49	48	56	59	34	38	31	37	27	26	20	15	19	21	34	18	14	14	16	20	11	15	675	May
10	October	66	65	40	39	54	27	33	42	38	24	29	22	27	24	22	17	21	16	16	19	12	17	14	684	October
11	November	53	49	53	47	46	36	39	40	27	26	21	27	24	19	27	15	20	19	19	27	15	13	14	676	November
8	August	44	49	42	31	45	45	39	43	40	21	19	18	34	18	22	23	17	22	12	9	21	16	12	642	August
12	December	46	43	53	33	31	37	31	33	23	25	23	28	24	22	21	17	19	20	16	19	16	15	11	606	December
2	February	56	71	45	57	39	39	44	33	42	32	30	30	22	27	22	26	16	28	19	23	25	13	10	749	February
	total	703	679	586	555	549	455	432	444	405	331	301	286	303	250	273	288	232	235	185	236	213	194	206	8,341	total

Transition of fatal and non-fatal accidents in prefectures in code no. 010501 wood furniture (1999-2021)

code	Prefecture	1999	2000	2001	2002	2003	2004	2005	2006	2007	2008	2009	2010	2011	2012	2013	2014	2015	2016	2017	2018	2019	2020	2021	total	Prefecture
40	Fukuoka	97	90	82		75		47	49	38	30	34	25	32	25	32	27	17	21	23	22	21	26	28	841	Fukuoka
1	Hokkaido	46	45	44		27		24	18	26	15	13	18	21	12	12	11	13	19	14	15	17	6	15	431	Hokkaido
27	Osaka	26	23	25		28		23	32	20	23	13	24	23	12	22	19	18	21	7	9	10	5	14	397	Osaka
21	Gifu	35	32	16		17		14	25	28	22	25	17	19	9	14	20	19	9	11	19	14	8	14	387	Gifu
22	Shizuoka	55	49	42		30		37	31	25	21	22	19	21	16	13	25	18	12	8	12	10	11	12	489	Shizuoka
41	Saga	11	12	11		13		6	9	8	11	5	7	9	7	8	3	6	6	6	7	5	6	9	165	Saga
23	Aichi	26	35	28		22		24	20	21	17	9	24	13	9	9	12	7	11	7	7	6	10	8	325	Aichi
5	Akita	9	16	3		5		1	9	5	7	4	6	4	2	2	7	6	4	3	1	5	5	8	112	Akita
33	Okayama	8	4	1		10		5	6	7	1	4	1	2	5	1	4	2	4	7	3	2	3	8	88	Okayama

34	Hiroshima	36	35	34		27		19	26	13	11	15	11	15	16	9	17	9	11	8	14	15	9	7	357	Hiroshima
18	Fukui	11	11	16		8		8	9	2	7	7	2	2	4	7	2	2	5	4	11	5	7	7	137	Fukui
28	Hyogo	23	14	12		17		13	17	17	8	12	8	8	5	5	7	3	4	5	2	3	4	6	193	Hyogo
15	Niigata	11	23	15		15		10	7	6	3	10	10	6	6	7	5	5	11	10	7	5	9	5	186	Niigata
37	Kagawa	17	17	11		11		5	5	11	8	7	1	4	9	7	6	6	5	4	5	4	1	5	149	Kagawa
10	Gunma	32	21	25		20		23	23	16	12	12	15	8	13	16	10	9	9	7	11	6	13	4	305	Gunma
11	Saitama	20	19	15		15		20	16	29	22	19	8	11	9	9	13	10	4	11	10	3	6	4	273	Saitama
36	Tokushima	28	28	20		12		24	14	13	10	7	5	14	11	10	10	10	5	4	6	4	6	4	245	Tokushima
13	Tokyo	19	14	18		23		13	5	11	11	10	9	6	8	5	4	10	6	9	7	3	1	4	196	Tokyo
6	Yamagata	13	9	21		14		6	14	11	6	3	4	7	7	8	7	11	7	2	5	8	8	4	175	Yamagata
44	Oita	11	6	10		12		9	13	9	11	3	3	5	4	7	6	2	6	1	10	8	3	4	143	Oita
14	Kanagawa	7	4	6		7		5	9	4	3	4	4	4	3	2	9		1	3	5	1	2	4	87	Kanagawa
39	Kochi	10	14	13		12		4	2	1	2	4	6	2	1	6	1	1	3	2	1	1		3	89	Kochi
3	Iwate	3	6	4		10		2	2	3	4	4	2	6	4	2	2	2	4		3	4	2	3	72	Iwate
2	Aomori	2	6	5		3		2	3	2	1		3	2	1	4	5	2		2	4		1	3	51	Aomori
30	Wakayama	12	18	10		14		8	10	8	11	7	6	4	8	7	8	6	1	1	2	2	2	2	147	Wakayama
7	Fukushima	1	12	7		7		7	9	11	8	2	6	9	7	7	4	6	5	5	2	8	2	2	127	Fukushima
38	Ehime	9	5	8		5		3	6	5	5	2	5	2	3	1	3	1	2	1	1	3	2	2	74	Ehime
29	Nara	8	7	4		1		6	3	2	6	5	2	1	2	2	1	4	5	4	2	1	1	2	69	Nara
8	Ibaraki	7	9	4		6			6	7	4	3		1	1	1	6	1	2	1	1	2	3	2	67	Ibaraki
16	Toyama	3	5	3		7		3	1	4		4	3	2	4	1	3		2	1	1	3	2	2	54	Toyama
43	Kumamoto	6	5	4		5		6	1	3	2	2	1		2	2			1			2		2	44	Kumamoto
9	Tochigi	14	8	9		9		7	3	3	3	4	5	7	4	2	4	4	5	3	9	3	4	1	111	Tochigi

45	Miyazaki	11	9	4		5		5	6	2	3	1	4	2	7	3	4	4	6		1	6	6	1	90	Miyazaki	
20	Nagano	12	6	7		10		4	5	5	1	3	5	2	3	4	6	4	2	1	3	2	1	1	87	Nagano	
26	Kyoto	5	12	8		3		6	5	4	3	3	1	3	2	2	3	4	3	2	1		3	1	74	Kyoto	
46	Kagoshima	6	5	1		4		5	1	4	3		1	2	1	3	2	2	3		2	2	4	1	52	Kagoshima	
19	Yamanashi	5	5	4		5			1	2	1	1	1	3	3	3	2	1	1		4	4	1	1	48	Yamanashi	
12	Chiba	5	3	5		3		1	3	2		1	3	1	2	4	4		3	1	2	1	1	1	46	Chiba	
35	Yamaguchi	6	5	2		3		3	3	1	2	2	1	3	1	1	1	2					3	1	1	41	Yamaguchi
31	Tottori	4	3	1		5		2	4	2	1	3	1			2	2	1	1				4	2	1	39	Tottori
17	Ishikawa	9	2	8				5	3	5	4	2	3	7		2	3		1	2		1	6		63	Ishikawa	
24	Mie	5	5	3		4		6	1	2	2	1	2	3	1	3		1	1	3	2	1			46	Mie	
42	Nagasaki	9	5	7		8		2	2	2	1	2	1	1		1					2	1	1		45	Nagasaki	
4	Miyagi	4	5	4		8		6	4	2	2	1	1	2		2			1			2			44	Miyagi	
32	Shimane	4	9	1		3		1	1	3		2	1	2		3		3	2	2	4	1			42	Shimane	
25	Shiga	1	3	3					1		2	3			1							1			15	Shiga	
47	Okinawa	1		2		1		2	1		1	1	1	2							1				13	Okinawa	
	total	703	679	586		549		432	444	405	331	301	286	303	250	273	288	232	235	185	236	213	194	206	7,331	total	

Data source : <https://anzeninfo.mhlw.go.jp/user/anzen/tok/anst00.htm>

Return to https://www.jisha.or.jp/english/statistics/202211_23.html