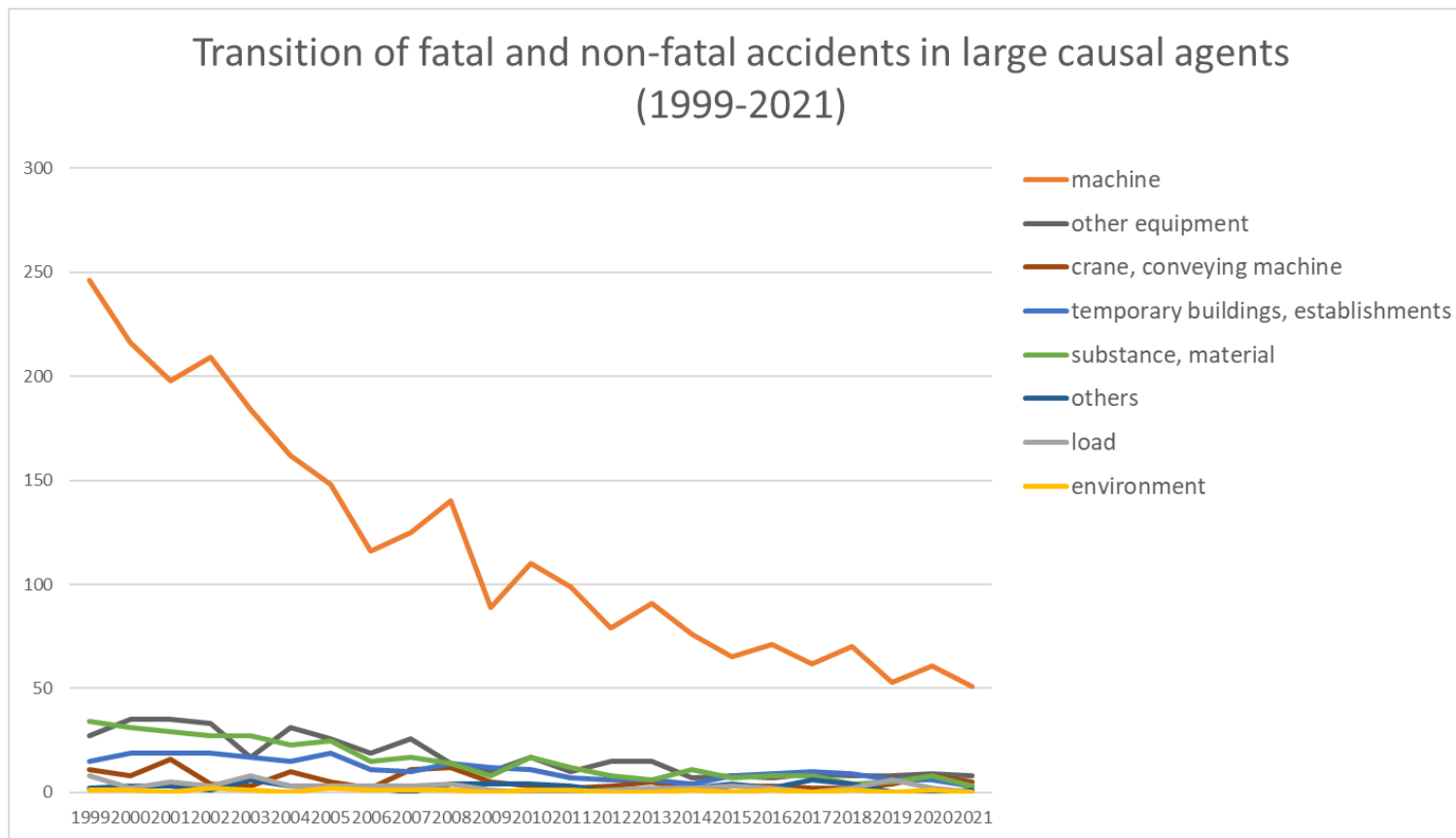
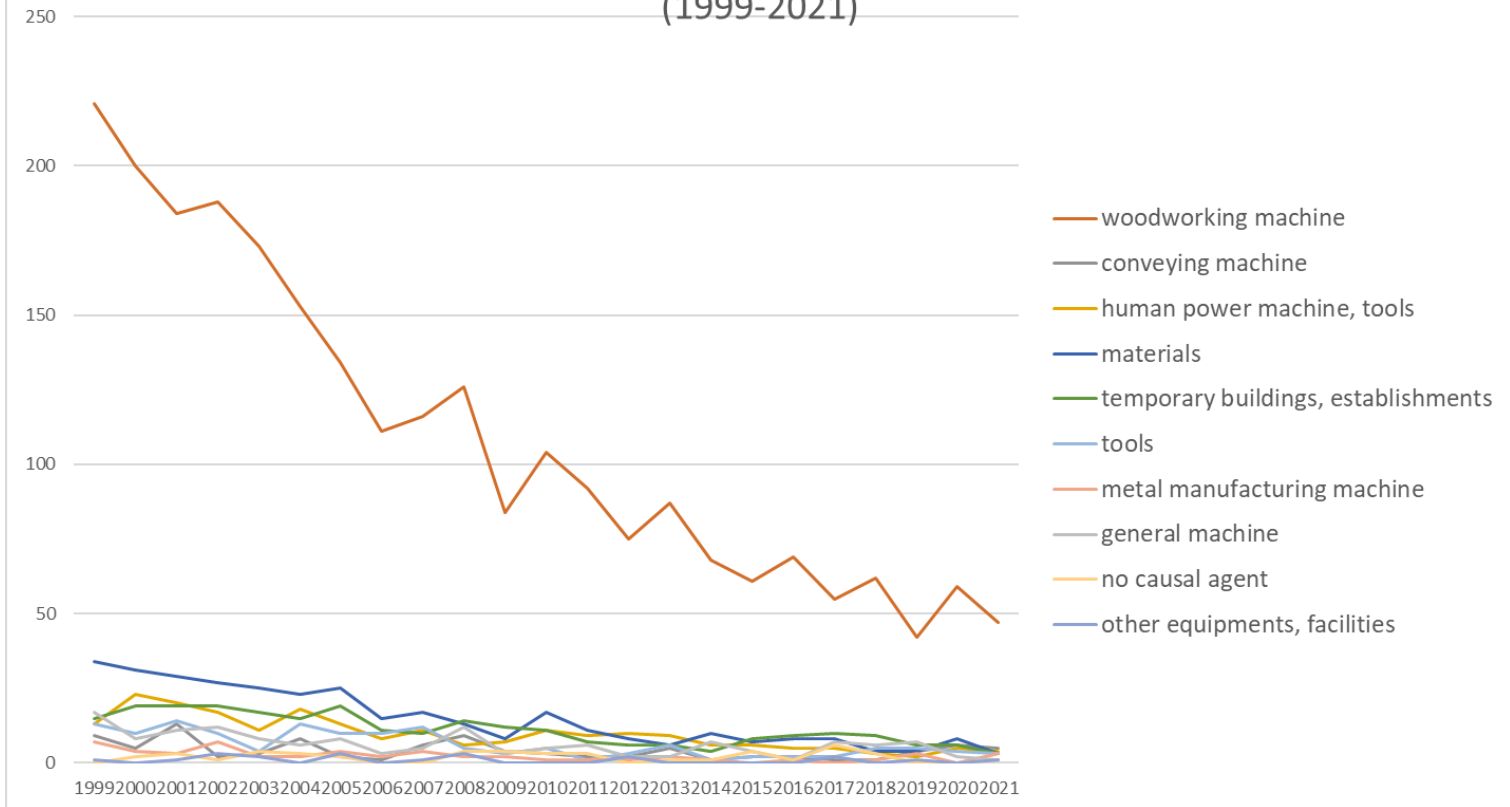


Transition of fatal and non-fatal accidents in each element like as causal agents, type of accidents, etc. in code no. 010503 fittings (1999-2021)



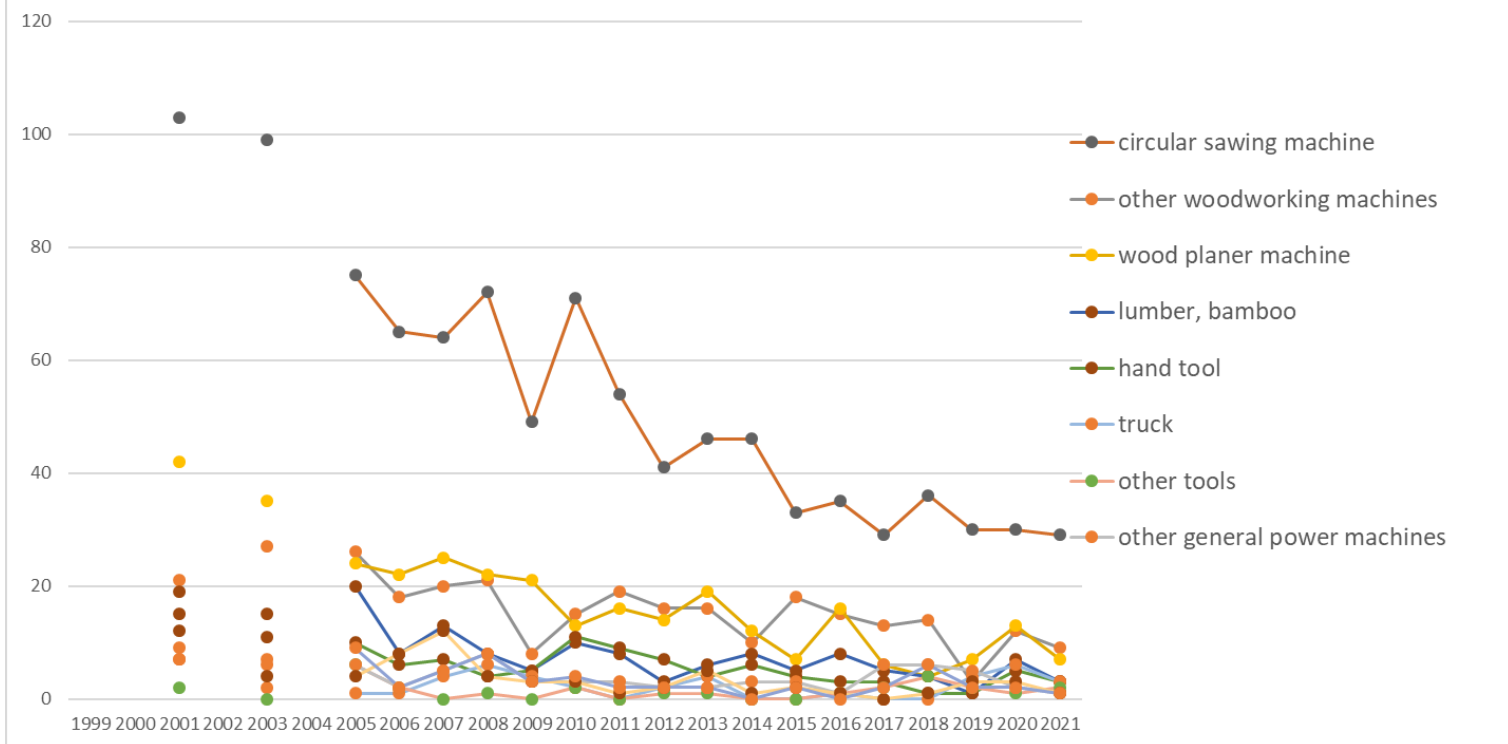
Transition of fatal and non-fatal accidents in large causal agents in code no. 010503 fittings (1999-2021)

Transition of fatal and non-fatal accidents in top 10 middle causal agents  
(1999-2021)



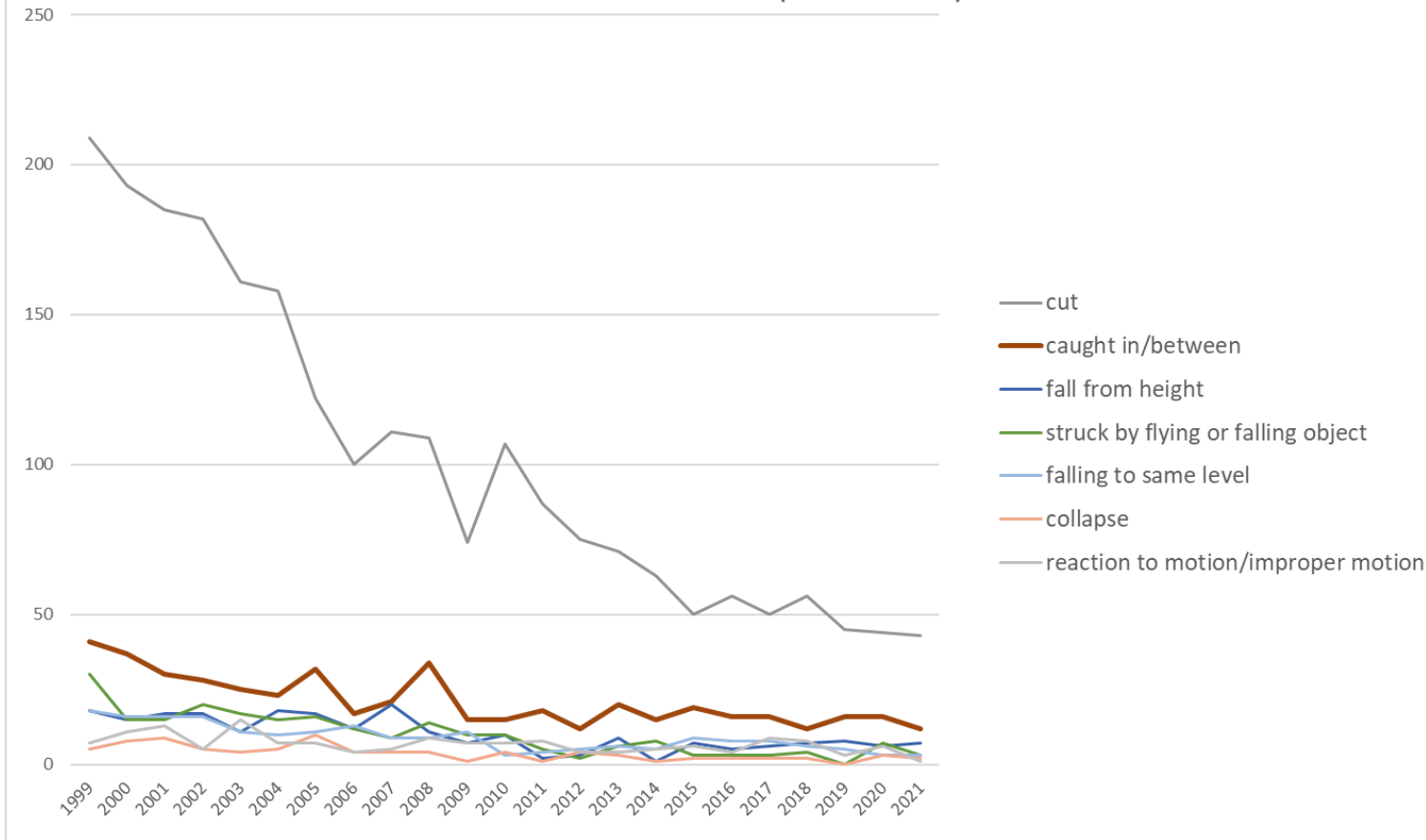
Transition of fatal and non-fatal accidents in middle causal agents in code no. 010503 fittings (1999-2021)

## Transition of fatal and non-fatal accidents in top 10 small causal agents (1999-2021)



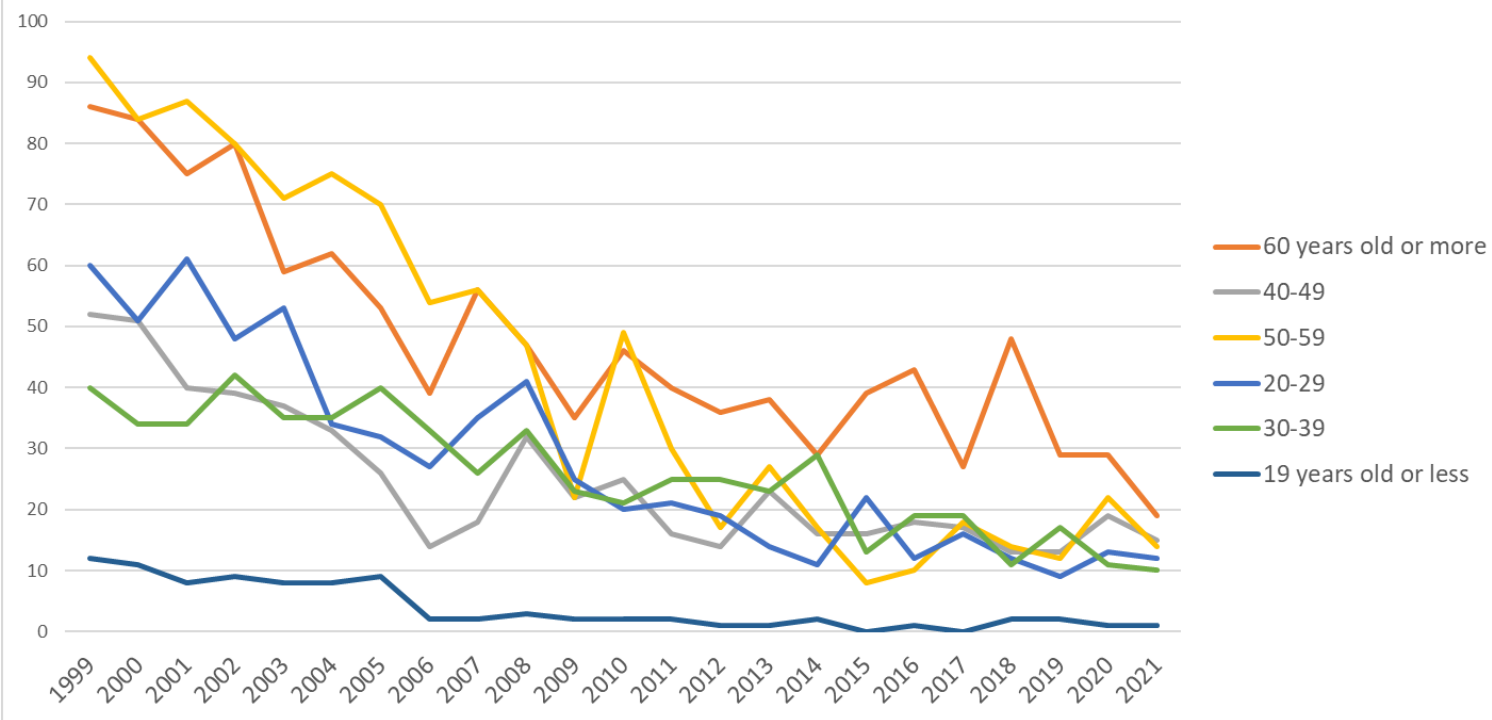
Transition of fatal and non-fatal accidents in small causal agents in code no. 010503 fittings (1999-2021)

### Transition of fatal and non-fatal accidents in top 7 type of accidents (1999-2021)



Transition of fatal and non-fatal accidents in type of accidents in code no. 010503 fittings (1999-2021)

Transition of fatal and non-fatal accidents in workers ages (1999-2021)



Transition of fatal and non-fatal accidents in workers ages in code no. 010503 fittings (1999-2021)





























372	slinging tool																									slinging tool
412	timbering																									timbering
511	explosive substance																									explosive substance
515	radiation																									radiation
713	water																									water
714	abnormal environment																									abnormal environment
999	unclassifiable																									unclassifiable
	total			305		263		230	169	193	203	129	163	134	112	126	104	98	103	97	100	82	95	71	2,777	total

Transition of fatal and non-fatal accidents in type of accidents in code no. 010503 fittings (1999-2021)

code	Type of accidents	1999	2000	2001	2002	2003	2004	2005	2006	2007	2008	2009	2010	2011	2012	2013	2014	2015	2016	2017	2018	2019	2020	2021	total	Type of accidents
08	cut	209	193	185	182	161	158	122	100	111	109	74	107	87	75	71	63	50	56	50	56	45	44	43	2,351	cut
07	caught in/between	41	37	30	28	25	23	32	17	21	34	15	15	18	12	20	15	19	16	16	12	16	16	12	490	caught in/between
01	fall from height	18	15	17	17	11	18	17	12	20	11	7	10	2	3	9	1	7	5	6	7	8	6	7	234	fall from height
04	struck by flying or falling object	30	15	15	20	17	15	16	12	9	14	10	10	5	2	6	8	3	3	3	4		7	3	227	struck by flying or falling object
02	falling to same level	18	16	16	16	11	10	11	13	9	9	11	3	4	5	6	5	9	8	8	6	5	3	3	205	falling to same level
05	collapse	5	8	9	5	4	5	10	4	4	4	1	4	1	4	3	1	2	2	2	2		3	2	85	collapse
19	reaction to motion/improper motion	7	11	13	5	15	7	7	4	5	9	7	7	8	4	4	5	6	4	9	8	3	6	1	155	reaction to motion/improper motion

06	crashed by	9	7	7	11	8	3	8	3	6	4	1	1	5	2	4	2	1	5		1	1	3		92	crashed by	
03	crash	4	7	8	7	4	5	5	3	2	3	2	3	1	3	2	2	1	1	2	2		4		71	crash	
17	traffic accident (public road)	1	2	5	2	1	2	1		3	4	1			1				2	1	1	3	2		32	traffic accident (public road)	
11	contact to high/low-temperature	1	2		3	2		1		1			1	3	1						1		1		17	contact to high/low-temperature	
90	others		2				1		1		1					1									7	others	
14	explosion					3				1												1			5	explosion	
16	fire				2					1						1									5	fire	
09	injury to the sole of the foot					1										1									2	injury to the sole of the foot	
12	contact to harmful substance										1														1	contact to harmful substance	
13	electric shock																		1						1	electric shock	
99	unclassifiable	1																							1	unclassifiable	
10	drown																										drown
15	burst																										burst
18	traffic accident (others)																										traffic accident (others)
	total	344	315	305	298	263	247	230	169	193	203	129	163	134	112	126	104	98	103	97	100	82	95	71	3,981	total	

Transition of fatal and non-fatal accidents in workers ages in code no. 010503 fittings (1999-2021)

code	Age	1999	2000	2001	2002	2003	2004	2005	2006	2007	2008	2009	2010	2011	2012	2013	2014	2015	2016	2017	2018	2019	2020	2021	total	Age
------	-----	------	------	------	------	------	------	------	------	------	------	------	------	------	------	------	------	------	------	------	------	------	------	------	-------	-----

6	60 years old or more	86	84	75	80	59	62	53	39	56	47	35	46	40	36	38	29	39	43	27	48	29	29	19	1,099	60 years old or more
4	40-49	52	51	40	39	37	33	26	14	18	32	22	25	16	14	23	16	16	18	17	13	13	19	15	569	40-49
5	50-59	94	84	87	80	71	75	70	54	56	47	22	49	30	17	27	17	8	10	18	14	12	22	14	978	50-59
2	20-29	60	51	61	48	53	34	32	27	35	41	25	20	21	19	14	11	22	12	16	12	9	13	12	648	20-29
3	30-39	40	34	34	42	35	35	40	33	26	33	23	21	25	25	23	29	13	19	19	11	17	11	10	598	30-39
1	19 years old or less	12	11	8	9	8	8	9	2	2	3	2	2	2	1	1	2		1		2	2	1	1	89	19 years old or less
	total	344	315	305	298	263	247	230	169	193	203	129	163	134	112	126	104	98	103	97	100	82	95	71	3,981	total

Transition of fatal and non-fatal accidents in workers scales in code no. 010503 fittings (1999-2021)

code	Workers scale	1999	2000	2001	2002	2003	2004	2005	2006	2007	2008	2009	2010	2011	2012	2013	2014	2015	2016	2017	2018	2019	2020	2021	total	Workers scale
1	9 workers or less	222	213	190	193	165	162	150	105	113	129	87	107	85	72	80	72	49	68	62	53	41	56	39	2,513	9 workers or less
2	10-29	97	81	83	72	61	57	42	40	52	56	30	38	27	32	27	19	21	19	17	26	23	19	20	959	10-29
3	30-49	21	12	21	18	16	10	16	8	13	8	8	12	13	4	5	7	12	4	12	8	8	13	6	255	30-49
5	100-299		3		5	4	4	1	2	6	1		3	4	2	8	4	7	5	6	10	4	4	3	86	100-299
6	300 workers or more	1		1	1		2	3										1				3	1	2	15	300 workers or more
4	50-99	3	6	10	9	17	12	18	14	9	9	4	3	5	2	6	2	8	7		3	3	2	1	153	50-99
	total	344	315	305	298	263	247	230	169	193	203	129	163	134	112	126	104	98	103	97	100	82	95	71	3,981	total

Transition of fatal and non-fatal accidents in months in code no. 010503 fittings (1999-2021)

code	Month	1999	2000	2001	2002	2003	2004	2005	2006	2007	2008	2009	2010	2011	2012	2013	2014	2015	2016	2017	2018	2019	2020	2021	total	Month
2	February	29	37	18	29	16	11	20	11	17	23	9	21	4	8	10	8	6	9	10	11	5	7	11	330	February
6	June	37	25	24	24	20	22	20	17	13	15	19	14	16	15	10	11	10	8	7	10	4	9	8	358	June

3	March	34	35	20	35	18	35	16	15	15	23	15	16	11	8	8	16	13	9	9	8	7	7	7	380	March
7	July	27	25	21	24	27	28	17	20	22	17	7	12	7	8	8	6	7	10	5	9	15	8	7	337	July
5	May	21	30	30	27	22	16	18	13	17	14	6	14	12	21	12	15	10	8	5	7	3	6	7	334	May
1	January	24	25	35	26	15	15	23	11	14	15	9	10	11	10	8	9	12	11	5	14	7	10	7	326	January
12	December	24	20	15	14	19	18	13	11	22	20	18	9	9	6	10	1	7	12	9	6	1	10	6	280	December
11	November	31	21	27	25	23	16	22	15	11	15	7	14	12	5	18	9	10	4	10	11	10	8	5	329	November
8	August	26	28	40	25	27	18	21	18	19	11	9	11	16	7	14	9	8	4	14	7	6	7	4	349	August
9	September	33	22	29	24	22	26	17	12	8	11	7	11	11	9	6	7	4	13	2	1	9	9	4	297	September
10	October	33	24	26	21	35	26	22	10	16	18	13	16	14	8	10	7	6	8	9	10	9	8	3	352	October
4	April	25	23	20	24	19	16	21	16	19	21	10	15	11	7	12	6	5	7	12	6	6	6	2	309	April
	total	344	315	305	298	263	247	230	169	193	203	129	163	134	112	126	104	98	103	97	100	82	95	71	3,981	total

Transition of fatal and non-fatal accidents in prefectures in code no. 010503 fittings (1999-2021)

code	Prefecture	1999	2000	2001	2002	2003	2004	2005	2006	2007	2008	2009	2010	2011	2012	2013	2014	2015	2016	2017	2018	2019	2020	2021	total	Prefecture
30	Wakayama	22	20	18		18		17	15	17	14	10	7	17	9	12	7	8	7	10	12	2	11	6	259	Wakayama
15	Niigata	9	11	11				10	6	9	10	5	6	5	5	5	5	2	3	7	4	2	1	5	121	Niigata
27	Osaka	17	10	6		8		11	2	3	6	2	7	1	6	8	3	2	2	6	2	4	3	5	114	Osaka
21	Gifu	8	11	10		3		7	7	3	4	4	4	3	7	2	3	3	2	3	4	4	4	4	100	Gifu
40	Fukuoka	11	20	13		14		16	10	8	15	7	9	8	3	9	6	5	2	3	3	9	8	3	182	Fukuoka
9	Tochigi	15	15	21		16		12	4	7	6	2	4	5	5	7	3	2	4	4	3	2	6	3	146	Tochigi
36	Tokushima	15	8	10		13		8	6	4	8	1	8	5	3	5	1	4	4	6	7	2	5	3	126	Tokushima
33	Okayama	9	6	7		11		3	5	8	11	5	4	2	2	4	2	3	3	2		1	2	3	93	Okayama
20	Nagano	7	9	9		4		8	4	1	3	1	3	2	4	1	3	4	5	1	5	4	2	3	83	Nagano
25	Shiga	5	1			1		1	2	4	1	1	1	1	2	1								3	24	Shiga

11	Saitama	16	9	22		10		13	6	18	14	10	9	6	10	5	9	7	5	6	12	8	4	2	201	Saitama
1	Hokkaido	20	21	18		17		13	14	12	8	7	17	12	5	7	5	4	5	4	4	1		2	196	Hokkaido
28	Hyogo	13	14	8		6		3	9	7	7	6	8	3	4	1	1	2	2	4	1	3	4	2	108	Hyogo
34	Hiroshima	9	9	9		9		4	4	6	4	5	8	6	2	1	6	3	1	1	2	2	2	2	95	Hiroshima
6	Yamagata	10	6	2		9		7	5	7	3	2	2	1	2	2	2	3	2	1	3	3	2	2	76	Yamagata
35	Yamaguchi	5	9	6		7		9	3	2	4	3	2	3	1	3	2	4	2	2		3	3	2	75	Yamaguchi
10	Gunma	9	7	4		5		3	1	1	5	4	4		5		4	4	2	2	1	2	2	65	Gunma	
7	Fukushima	4	6	2		7		4	1	4	3	2	1		2		3	3	4		2	6	4	2	60	Fukushima
24	Mie	7	5	5		5		3	5	5	8	3	5			1		1		2	2	1	2	60	Mie	
16	Toyama	2	2	7		6				1	2	1		2	4	5	1		2	2		1		2	40	Toyama
17	Ishikawa	4	8	4				2	2		1		3		1	1								2	28	Ishikawa
22	Shizuoka	10	5	10		10		5	7	6	8	6	3	6	3	6	9	9	8	6	7	1	5	1	131	Shizuoka
23	Aichi	18	6	8		3		6	8	7	7	6	3	8	2	2	1	2	3	4	1	2	4	1	102	Aichi
14	Kanagawa	13	13	9		5		6	1	3	4	1	1	2	2	4		2	1			3		1	71	Kanagawa
5	Akita	5	6	8		3		2	3	6	5	3	5	3	3	2	4	3	2	2	2		1	1	69	Akita
44	Oita	5	6	7		3		5	3	3	2	2	4	3	3	1	1	2		3	3	1	3	1	61	Oita
37	Kagawa	6	5	1		4		3	4	3	3	3	5	1	1	2	3					1	1	1	47	Kagawa
47	Okinawa	3	4	4		7		2	6	1	1	1	2	1	2	1	1	1	1		1	1		1	41	Okinawa
38	Ehime	8	5	3		3		5	1		1	1		3	2			1	2	2			2	1	40	Ehime
41	Saga	4	3	1		1		3	2	2	2		3	2		2	3	1	3	2		1	1	1	37	Saga
3	Iwate	4	2	6		3		4	2		3	1	2		1	1		1		1	2		1	1	35	Iwate
43	Kumamoto	1	7	2		4		1	2	2	3		1				2	1	2	1				1	30	Kumamoto
13	Tokyo	8	5	10		4		6	5	5	4	6	4	1	1	3	2		2	4	1	1	4		76	Tokyo

32	Shimane	12	7	8		11		3	3	4	3	1	2		2		4			3	2	2	2			69	Shimane
29	Nara	2	8	4		4		4		3	1	3	2	5	2	3		6	4			2				53	Nara
4	Miyagi	4	7	3		3		5	4	3	2	1	3	2	1	4	1	1	2		1	1				48	Miyagi
42	Nagasaki	1	2	4		3		2	1	3	3	1	2	4	2			2	2	1	2	2	4			41	Nagasaki
39	Kochi	2	4	4		6			1	1	4	2	3	1	2		2		1	2	1		2			38	Kochi
12	Chiba	4	6	4		1		1	1	1	1	2	2	2	2	3	2	1	1		1					35	Chiba
26	Kyoto	2	2	7		2		5	1	3	1	3		2	1	1	1		1	1	1					34	Kyoto
2	Aomori	1	1	5		4		2	1	1	1	1	1	2			1		1		2					24	Aomori
46	Kagoshima	3		2		3		3		2	1	1				4	1		2	1	1					24	Kagoshima
45	Miyazaki	3	1			1		3		1	1	1	1		2				3			3	1			21	Miyazaki
8	Ibaraki	5	1			1				2	1		1	2		1	1		1		1	1				18	Ibaraki
31	Tottori	3	1	2		3			1		1			1	1		1	1								15	Tottori
18	Fukui					2			1	3	1	2	1	1			1				2					14	Fukui
19	Yamanashi		1	1						1	2					2		1	1		1					10	Yamanashi
	total	344	315	305		263		230	169	193	203	129	163	134	112	126	104	98	103	97	100	82	95	71	3,436	total	

Data source : <https://anzeninfo.mhlw.go.jp/user/anzen/tok/anst00.htm>

Return to [https://www.jisha.or.jp/english/statistics/202211\\_23.html](https://www.jisha.or.jp/english/statistics/202211_23.html)