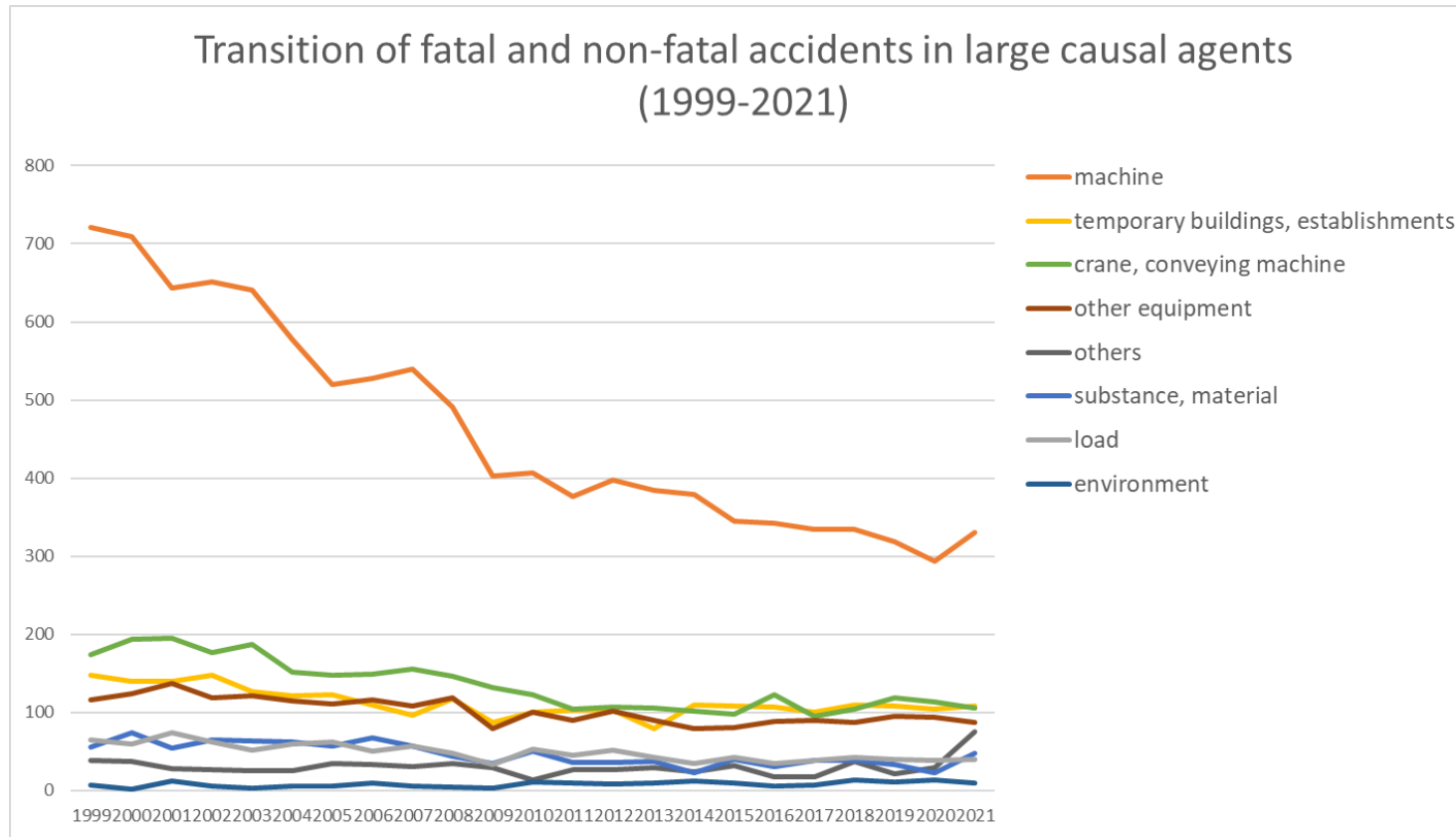
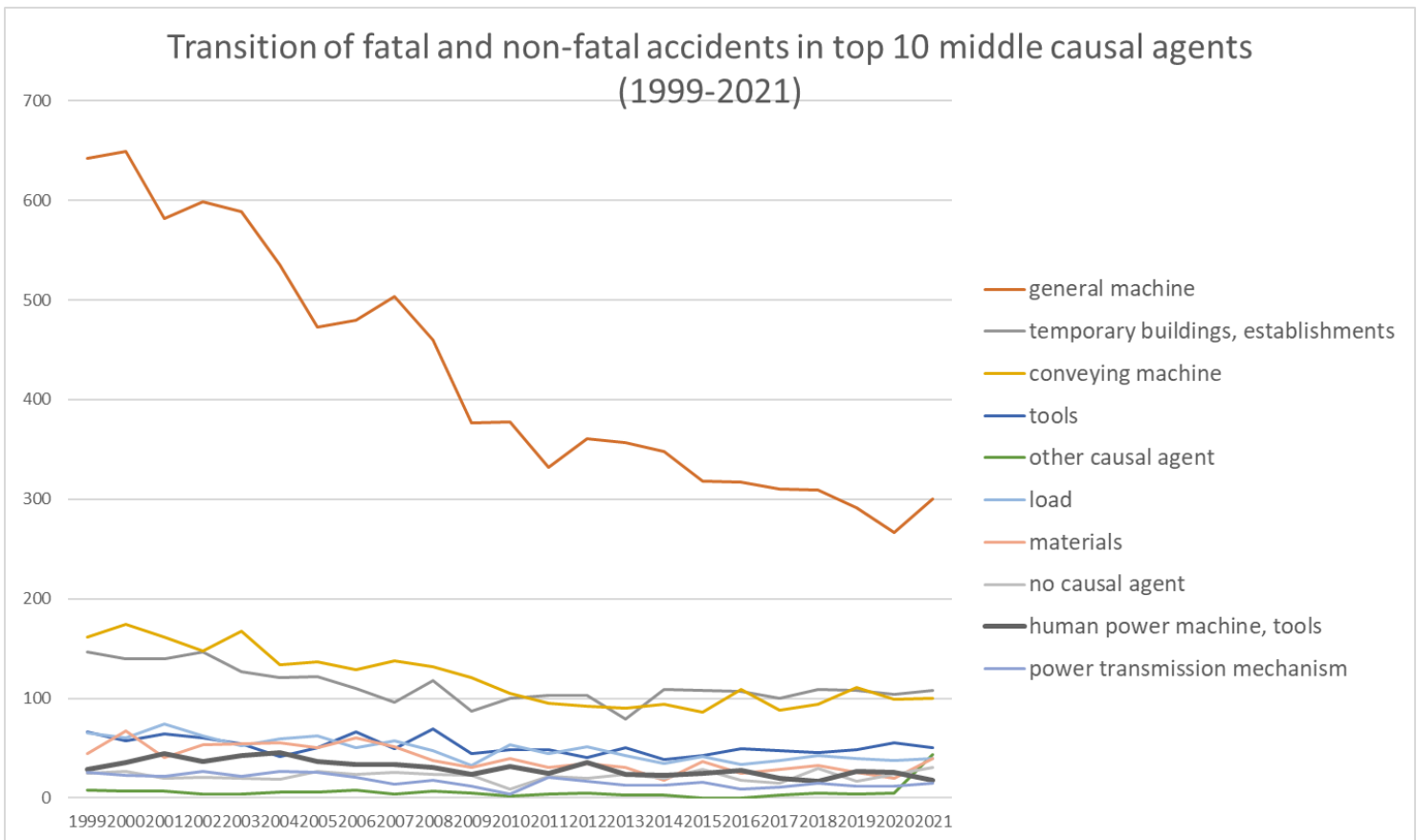


Transition of fatal and non-fatal accidents in each element like as causal agents, type of accidents, etc. in code no. 0106 pulp/paper processing products (1999-2021)

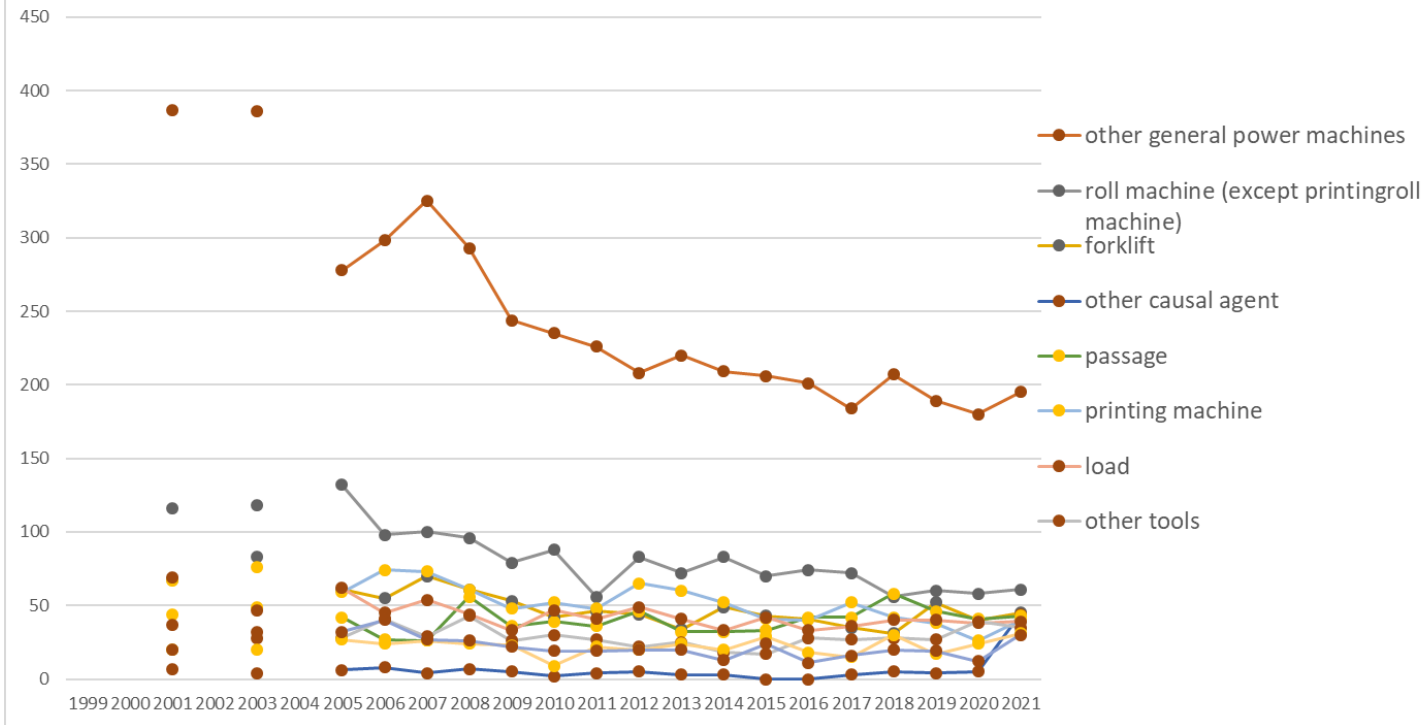


Transition of fatal and non-fatal accidents in large causal agents in code no. 0106 pulp/paper processing products (1999-2021)

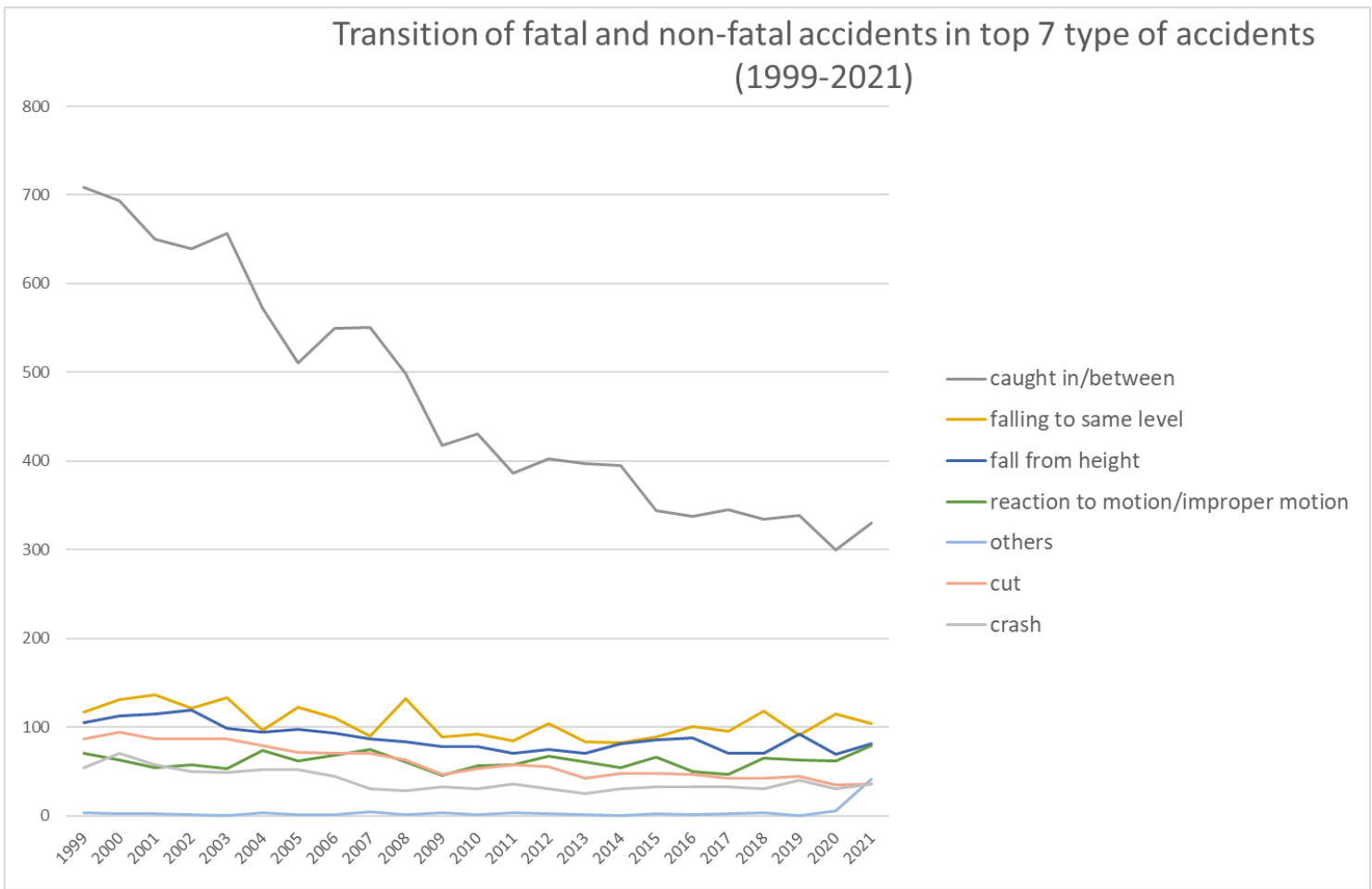


Transition of fatal and non-fatal accidents in middle causal agents in code no. 0106 pulp/paper processing products (1999-2021)

Transition of fatal and non-fatal accidents in top 10 small causal agents (1999-2021)

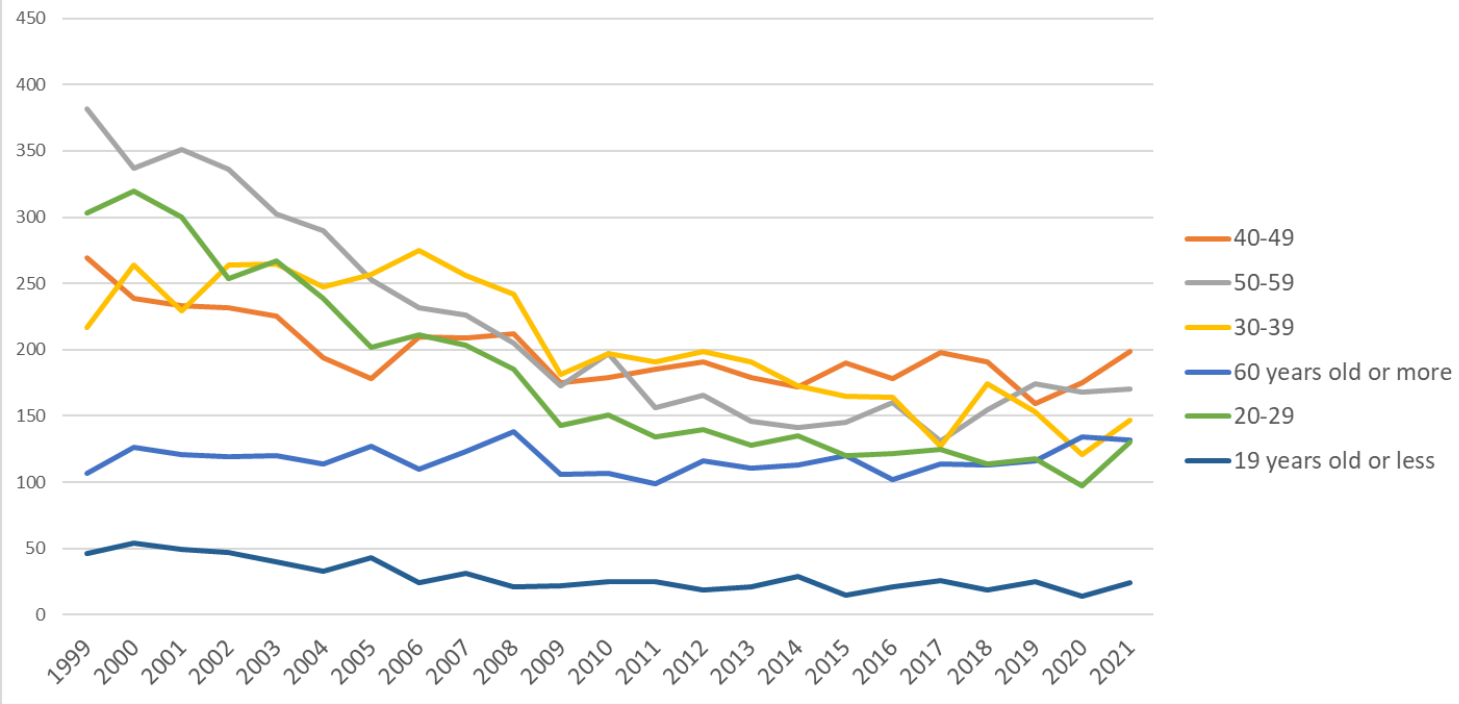


Transition of fatal and non-fatal accidents in small causal agents in code no. 0106 pulp/paper processing products (1999-2021)



Transition of fatal and non-fatal accidents in type of accidents in code no. 0106 pulp/paper processing products (1999-2021)

Transition of fatal and non-fatal accidents in workers ages (1999-2021)



Transition of fatal and non-fatal accidents in workers ages in code no. 0106 pulp/paper processing products (1999-2021)

	temperature																									temperature
12	contact to harmful substance	5	7	5	10	6	7	5	6	5	5	3	7	1	1	3	4	3	3	7	5	7	1	6	112	contact to harmful substance
17	traffic accident (public road)	7	7	13	11	4	6	5	6	11	6	4	11	5	7	8	4	4	7	4	2	5	10	3	150	traffic accident (public road)
09	injury to the sole of the foot	1		1	4	2	1	3	1		2	1		1	1	2	2	1	2	2	2		1	1	31	injury to the sole of the foot
99	unclassifiable	4	1		2	1	1	1	1		3	1	1		1		1	1		1	1				21	unclassifiable
13	electric shock	1	1	3	2	1			2							2		1	2	2	1				18	electric shock
18	traffic accident (others)	1	1	1	1					1			1		1	1	1				2		1		12	traffic accident (others)
15	burst	1		1	2			1	1	2															8	burst
16	fire			1	1	2				1			1			1		1							8	fire
10	drown								1					3				1				1			6	drown
14	explosion				1		3													1	1				6	explosion
	total	1,324	1,340	1,283	1,252	1,219	1,117	1,060	1,062	1,048	1,003	800	856	790	831	776	763	755	747	721	766	745	709	802	21,769	total

Transition of fatal and non-fatal accidents in workers ages in code no. 0106 pulp/paper processing products (1999-2021)

code	Age	1999	2000	2001	2002	2003	2004	2005	2006	2007	2008	2009	2010	2011	2012	2013	2014	2015	2016	2017	2018	2019	2020	2021	total	Age
4	40-49	269	239	233	232	225	194	178	210	209	212	175	179	185	191	179	172	190	178	198	191	159	175	199	4,572	40-49
5	50-59	382	337	351	336	302	290	253	232	226	205	173	197	156	166	146	141	145	160	131	155	174	168	170	4,996	50-59
3	30-39	217	264	229	264	265	247	257	275	256	242	181	197	191	199	191	173	165	164	127	174	153	121	147	4,699	30-39
6	60 years old or more	107	126	121	119	120	114	127	110	123	138	106	107	99	116	111	113	120	102	114	113	116	134	132	2,688	60 years old or more

2	20-29	303	320	300	254	267	239	202	211	203	185	143	151	134	140	128	135	120	122	125	114	118	97	130	4,141	20-29
1	19 years old or less	46	54	49	47	40	33	43	24	31	21	22	25	25	19	21	29	15	21	26	19	25	14	24	673	19 years old or less
	total	1,324	1,340	1,283	1,252	1,219	1,117	1,060	1,062	1,048	1,003	800	856	790	831	776	763	755	747	721	766	745	709	802	21,769	total

Transition of fatal and non-fatal accidents in workers scales in code no. 0106 pulp/paper processing products (1999-2021)

code	Workers scale	1999	2000	2001	2002	2003	2004	2005	2006	2007	2008	2009	2010	2011	2012	2013	2014	2015	2016	2017	2018	2019	2020	2021	total	Workers scale
2	10-29	388	373	391	374	376	324	334	323	317	306	253	252	194	243	240	241	205	211	199	209	201	182	200	6,336	10-29
4	50-99	248	242	236	234	224	178	165	190	204	215	144	152	164	169	146	142	139	149	139	165	168	156	171	4,140	50-99
3	30-49	245	279	250	239	250	217	215	224	196	161	143	181	149	157	141	148	151	155	147	144	156	143	147	4,238	30-49
5	100-299	182	174	173	166	142	161	157	160	135	165	140	140	154	135	119	120	135	135	122	135	124	132	142	3,348	100-299
1	9 workers or less	190	204	188	193	197	195	161	134	154	124	100	103	102	104	111	90	100	82	81	88	60	66	89	2,916	9 workers or less
6	300 workers or more	71	68	45	46	30	42	28	31	42	32	20	28	27	23	19	22	25	15	33	25	36	30	53	791	300 workers or more
	total	1,324	1,340	1,283	1,252	1,219	1,117	1,060	1,062	1,048	1,003	800	856	790	831	776	763	755	747	721	766	745	709	802	21,769	total

Transition of fatal and non-fatal accidents in months in code no. 0106 pulp/paper processing products (1999-2021)

code	Month	1999	2000	2001	2002	2003	2004	2005	2006	2007	2008	2009	2010	2011	2012	2013	2014	2015	2016	2017	2018	2019	2020	2021	total	Month
8	August	101	111	97	105	89	88	109	99	86	59	64	81	64	68	63	64	62	66	57	73	62	61	89	1,818	August
10	October	116	118	95	102	95	102	103	71	92	106	77	74	71	62	80	57	67	71	65	74	74	57	78	1,907	October
4	April	109	109	111	98	98	91	59	86	78	82	66	73	73	79	51	71	71	53	70	63	48	64	78	1,781	April
3	March	113	133	128	97	118	97	95	84	99	88	70	77	72	72	73	67	61	73	52	71	66	60	71	1,937	March
9	September	129	114	120	113	106	92	78	86	87	75	61	74	75	57	61	52	69	58	56	44	74	51	70	1,802	September
12	December	99	110	96	104	91	84	83	74	72	72	70	65	56	70	79	74	62	62	61	65	58	69	69	1,745	December
11	November	100	103	84	112	92	82	85	106	71	87	55	71	58	65	65	52	66	58	66	60	59	54	63	1,714	November

1	January	126	107	113	111	105	117	97	97	84	85	80	95	60	77	59	71	51	74	58	58	63	64	61	1,913	January
6	June	103	121	112	98	115	97	95	89	101	84	59	58	85	67	69	64	64	46	65	67	54	51	61	1,825	June
7	July	111	96	119	123	106	88	89	96	96	89	75	61	58	81	46	75	69	68	64	71	62	66	56	1,865	July
2	February	103	110	102	90	113	92	79	94	94	93	58	64	54	69	69	60	54	65	59	69	56	47	53	1,747	February
5	May	114	108	106	99	91	87	88	80	88	83	65	63	64	64	61	56	59	53	48	51	69	65	53	1,715	May
	total	1,324	1,340	1,283	1,252	1,219	1,117	1,060	1,062	1,048	1,003	800	856	790	831	776	763	755	747	721	766	745	709	802	21,769	total

Transition of fatal and non-fatal accidents in prefectures in code no. 0106 pulp/paper processing products (1999-2021)

code	Prefecture	1999	2000	2001	2002	2003	2004	2005	2006	2007	2008	2009	2010	2011	2012	2013	2014	2015	2016	2017	2018	2019	2020	2021	total	Prefecture
22	Shizuoka	174	162	170		156		137	132	109	137	101	105	71	91	74	92	102	88	85	86	95	93	90	2,350	Shizuoka
11	Saitama	74	109	84		95		80	85	90	83	57	78	49	76	71	51	54	77	54	56	75	59	76	1,533	Saitama
27	Osaka	117	111	141		100		103	83	97	84	71	63	76	73	65	61	62	58	59	61	45	49	69	1,648	Osaka
23	Aichi	92	82	73		77		59	55	68	54	48	69	61	58	38	47	56	50	63	60	53	40	59	1,262	Aichi
12	Chiba	40	36	42		19		21	27	21	24	23	20	22	17	19	18	13	15	16	13	12	12	35	465	Chiba
38	Ehime	86	77	83		72		77	68	68	64	56	46	59	49	58	59	48	50	48	48	51	50	34	1,251	Ehime
21	Gifu	61	61	52		55		44	33	38	45	30	34	27	36	25	28	32	31	32	35	28	36	32	795	Gifu
28	Hyogo	58	57	44		54		43	44	48	38	33	31	37	38	31	42	37	33	26	41	44	31	31	841	Hyogo
8	Ibaraki	31	43	25		25		25	24	31	33	24	21	23	22	19	20	25	19	14	28	18	16	30	516	Ibaraki
13	Tokyo	42	43	40		45		32	33	31	32	25	31	27	20	22	17	19	14	20	18	13	14	26	564	Tokyo
9	Tochigi	24	22	21		25		21	21	15	26	21	17	17	20	19	17	20	16	18	19	13	19	23	414	Tochigi
14	Kanagawa	48	42	33		54		48	38	28	38	17	28	22	40	25	23	20	32	31	16	17	17	21	638	Kanagawa
37	Kagawa	28	37	29		38		38	23	38	22	17	18	26	18	23	23	16	10	19	14	16	18	19	490	Kagawa
15	Niigata	17	18	17		17		9	14	7	16	13	14	11	12	11	11	15	10	17	12	12	14	19	286	Niigata
29	Nara	8	9	13		16		6	16	17	22	13	15	9	9	10	7	16	13	11	11	19	11	19	270	Nara

26	Kyoto	16	30	29		25		18	16	28	20	17	12	23	20	19	18	10	12	21	15	15	8	17	389	Kyoto
25	Shiga	9	18	19		25		16	26	23	17	20	17	13	14	13	17	11	10	9	11	12	14	15	329	Shiga
40	Fukuoka	28	32	24		25		35	23	26	24	16	13	22	16	20	14	14	18	15	23	22	15	14	439	Fukuoka
16	Toyama	17	13	12		19		9	18	18	9	12	14	14	12	12	5	14	8	11	4	10	8	14	253	Toyama
1	Hokkaido	34	31	29		15		20	22	23	18	21	13	15	20	21	10	22	20	14	14	18	20	13	413	Hokkaido
10	Gunma	22	17	12		17		20	18	13	9	13	14	13	13	10	13	14	13	7	15	12	11	12	288	Gunma
7	Fukushima	13	23	16		12		9	18	17	13	7	15	11	17	10	9	13	15	9	7	11	6	11	262	Fukushima
34	Hiroshima	18	20	28		12		23	13	18	12	22	10	10	11	20	14	11	8	8	17	12	7	10	304	Hiroshima
39	Kochi	47	39	35		33		23	22	24	17	15	19	17	12	10	15	12	28	17	14	5	16	9	429	Kochi
33	Okayama	13	18	12		23		19	12	19	14	11	18	14	20	13	17	7	12	10	10	11	14	8	295	Okayama
24	Mie	14	15	17		20		20	18	16	19	9	13	7	10	14	8	7	5	9	10	18	6	8	263	Mie
4	Miyagi	20	18	11		15		6	14	10	12	6	7	9	5	7	8	5	4	6	5	5	5	8	186	Miyagi
35	Yamaguchi	13	12	7		12		10	10	7	6	4	7	6	7	2	6	3	2	3	8	5	3	7	140	Yamaguchi
6	Yamagata	15	7	13		5		4	4	8	2	5	6	4	4	7	5	2	5	2	4	6	3	7	118	Yamagata
41	Saga	17	8	6		5		4	12	3	13	5	12	9	6	7	5	6	7	7	5	5	15	6	163	Saga
19	Yamanashi	20	11	17		8		11	17	5	5	1	3	5	8	4	8	5	6	4	3	2	4	6	153	Yamanashi
3	Iwate	4	9	5		9		3	6	7	7	2	11	5	6	8	9	3	2	5	4	4	4	6	119	Iwate
31	Tottori	8	7	5		4		4	2	6	5	6	3	2	4	5	5	3	3	3	6	7	11	6	105	Tottori
36	Tokushima	12	26	15		14		7	6	13	9	5	7	7	8	6	6	6	5	9	5	9	8	5	188	Tokushima
20	Nagano	11	9	15		11		9	14	8	9	12	5	6	6	12	9	9	8	3	8	8	10	5	187	Nagano
17	Ishikawa	6	12	11		10		7	13	3	7	6	7	7	4	5	5	4	5	2	11	8	6	5	144	Ishikawa
43	Kumamoto	9	6	10		8		7	12	12	4	4	5	2	4	3	5	7	4	6	7	6	6	4	131	Kumamoto
30	Wakayama	5	8	4		7		5	8	4	5	10	2	3	4	4	6	5	4	6	9	2	7	4	112	Wakayama
18	Fukui	16	9	23		11		12	16	8	6	10	11	7	6	12	9	7	10	3	9	7	5	3	200	Fukui

2	Aomori	4	2	6		4		1	3	4	7	1	2	9	3	4	7	1	4	6	5	2	4	3	82	Aomori
44	Oita	5	5	7		4		3	6	5	1	1	4	4	2	3	3	5	1	4	5	2	2	3	75	Oita
5	Akita	4	3	5		6		1	2	2			2	1	3	1		5	4		4	3	3	3	52	Akita
45	Miyazaki	2	5	6		2		4	2	5	4	5	4	4	2	4	2	3	1	2	1	1	2	2	63	Miyazaki
42	Nagasaki	6	6	5		2		1	4	1	1		4	1	1	2	2	1	2	2	1	2		2	46	Nagasaki
47	Okinawa	1	2	2		3		1	2			1	4	1	1	5	1	1	2	1	3		2	2	35	Okinawa
32	Shimane	8	6	3		2		2	2	3	6		1	1	1	1	4	2		2	3	1	3	1	52	Shimane
46	Kagoshima	7	4	7		3		3	5	3	4	4	1	1	2	2	2	2	3	2	2	3	2		62	Kagoshima
	total	1,324	1,340	1,283		1,219		1,060	1,062	1,048	1,003	800	856	790	831	776	763	755	747	721	766	745	709	802	19,400	total

Data source : <https://anzeninfo.mhlw.go.jp/user/anzen/tok/anst00.htm>

Return to https://www.jisha.or.jp/english/statistics/202211_23.html