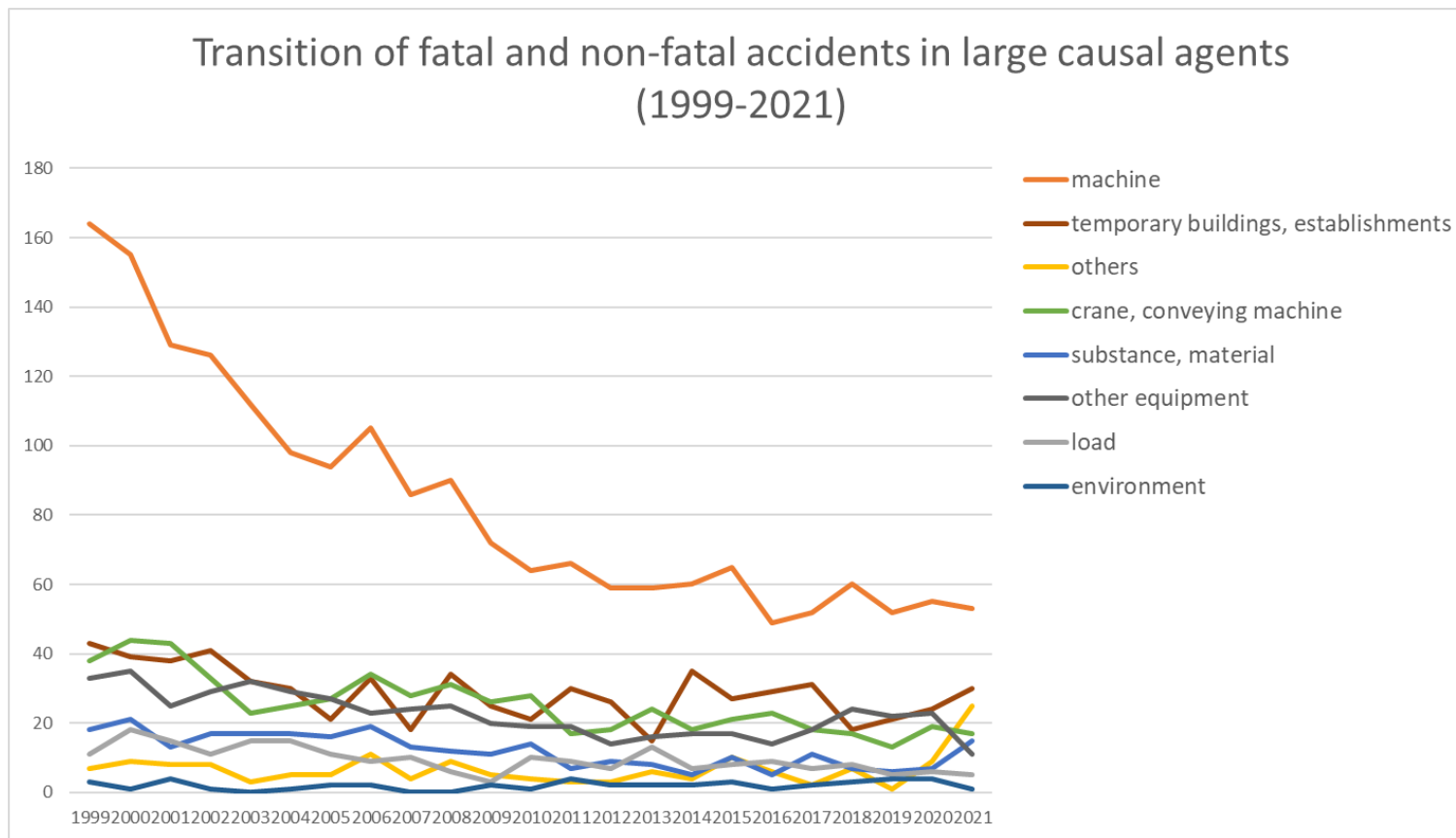
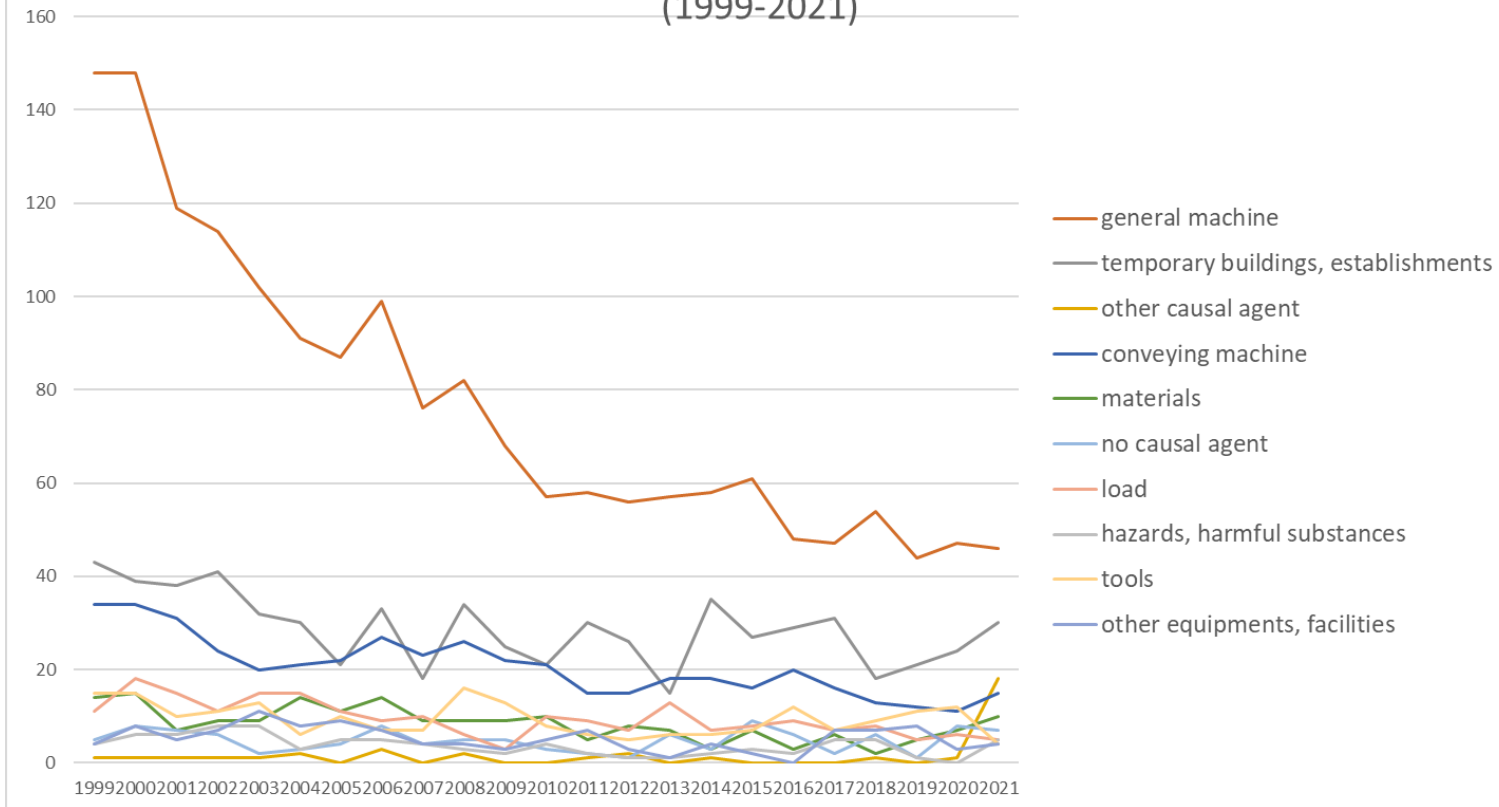


Transition of fatal and non-fatal accidents in each element like as causal agents, type of accidents, etc. in code no. 010601 pulp/paper (1999-2021)



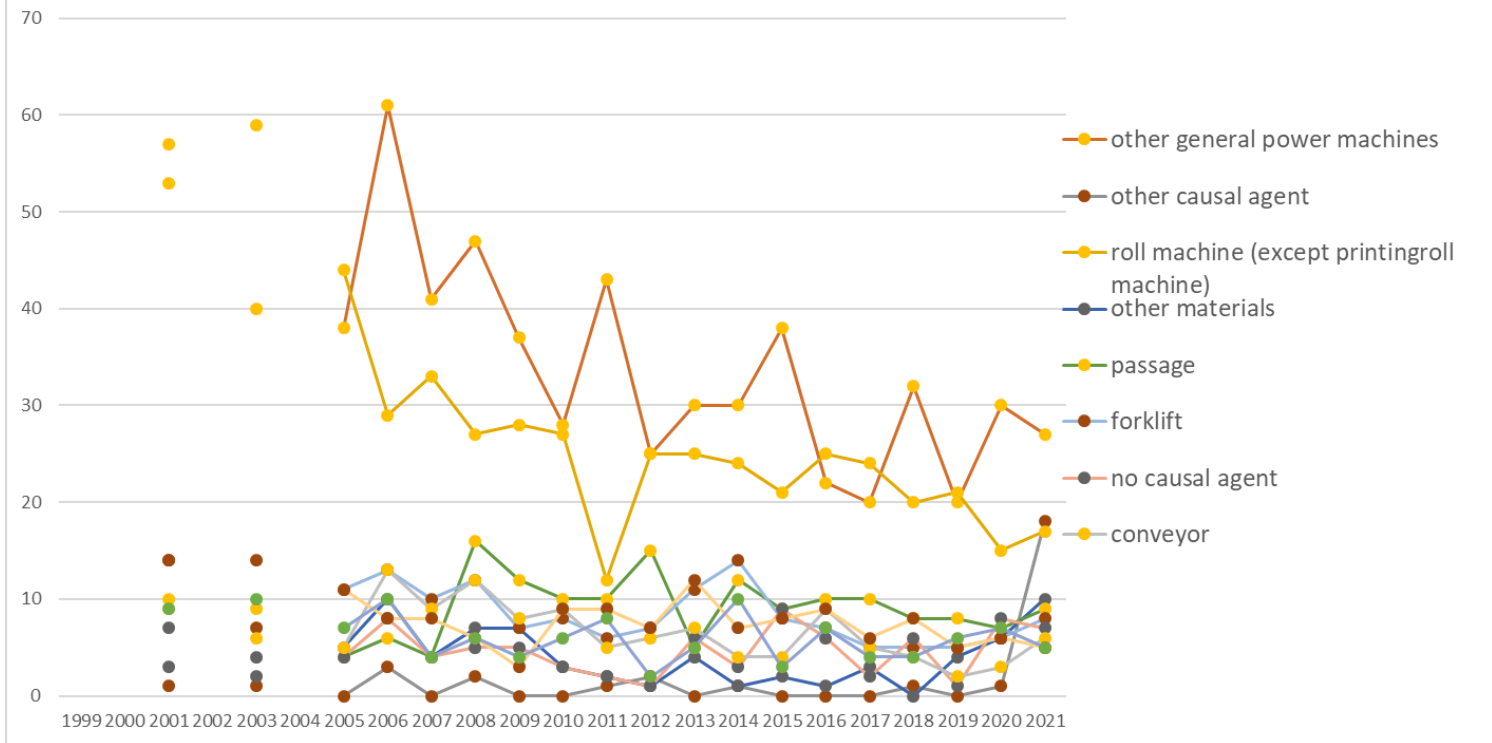
Transition of fatal and non-fatal accidents in large causal agents in code no. 010601 pulp/paper (1999-2021)

Transition of fatal and non-fatal accidents in top 10 middle causal agents
(1999-2021)



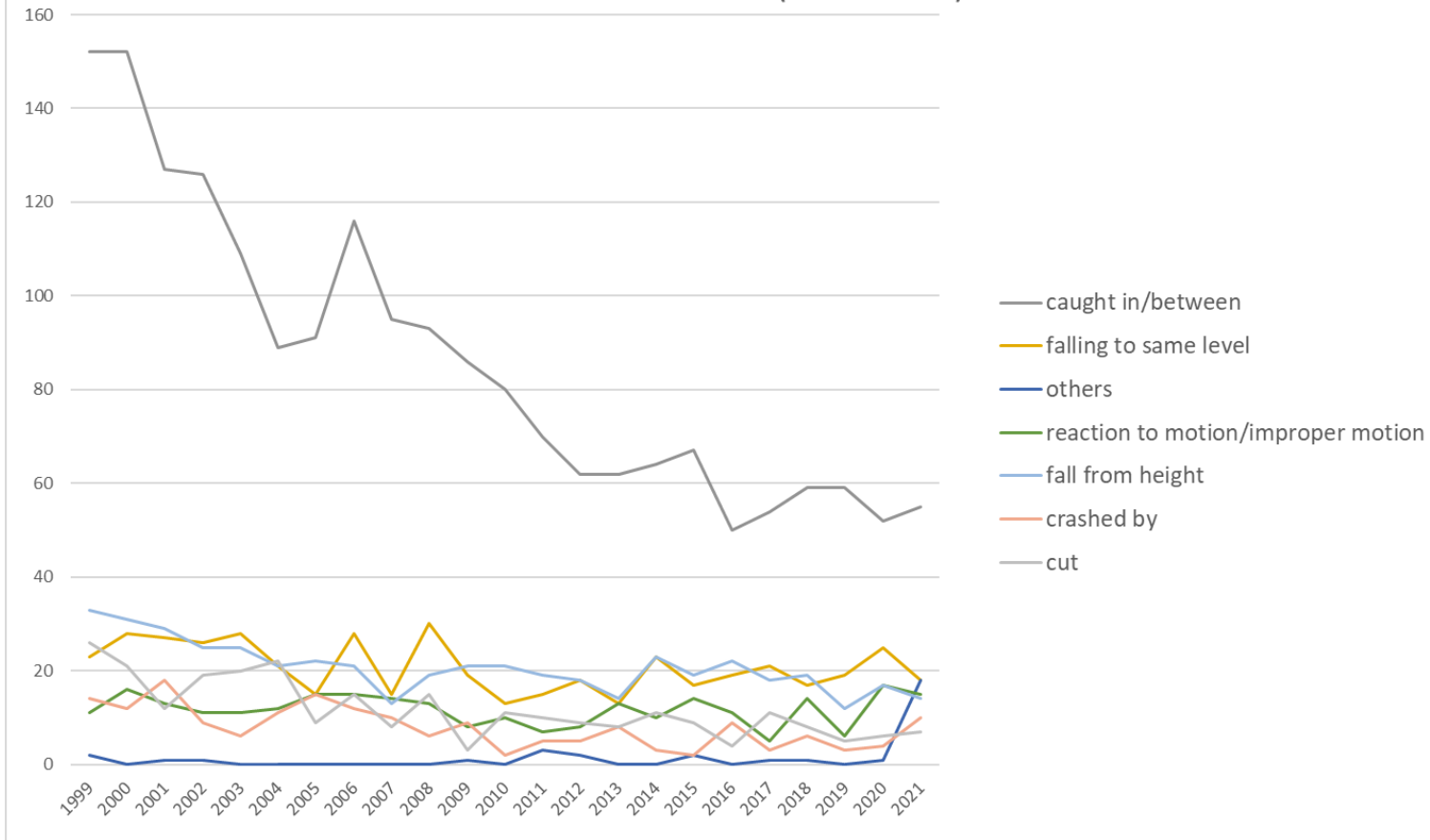
Transition of fatal and non-fatal accidents in middle causal agents in code no. 010601 pulp/paper (1999-2021)

Transition of fatal and non-fatal accidents in top 10 small causal agents (1999-2021)



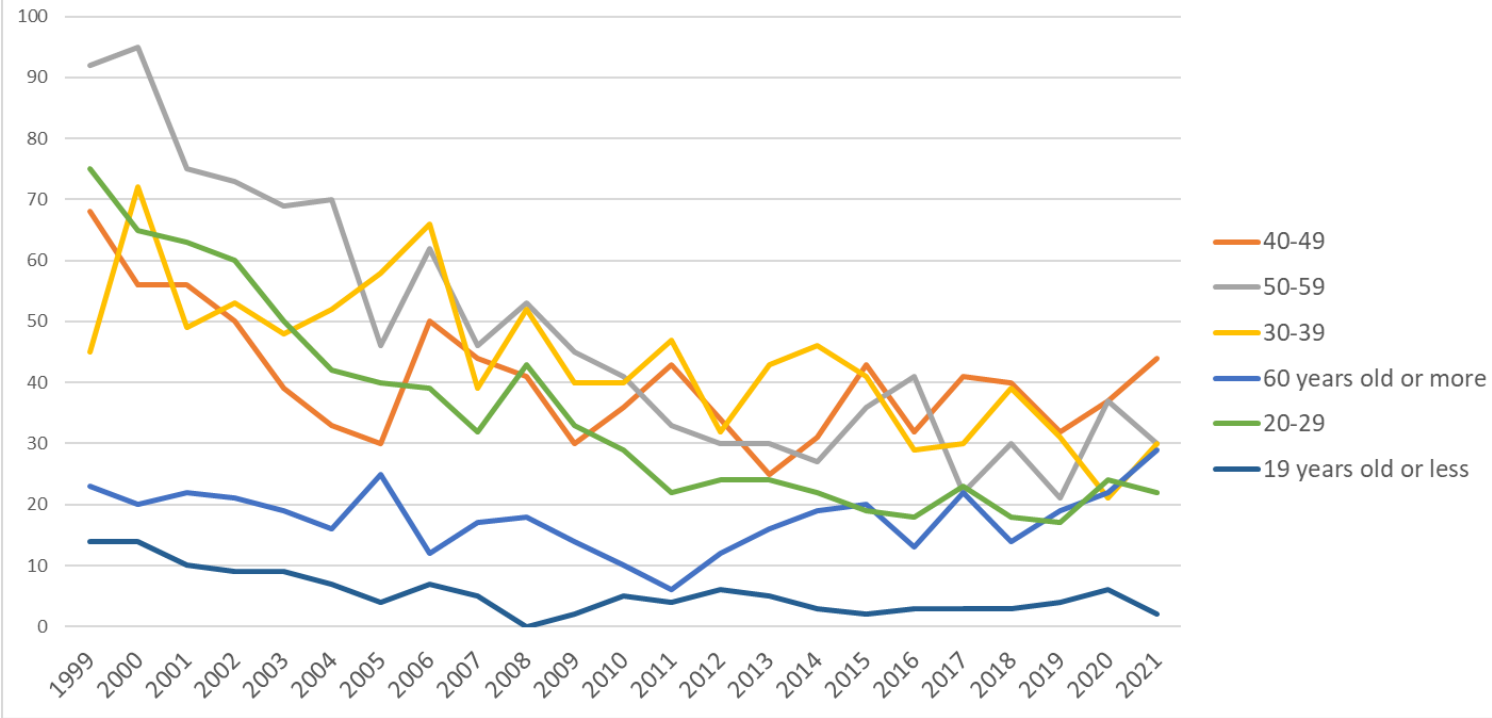
Transition of fatal and non-fatal accidents in small causal agents in code no. 010601 pulp/paper (1999-2021)

Transition of fatal and non-fatal accidents in top 7 type of accidents
(1999-2021)



Transition of fatal and non-fatal accidents in type of accidents in code no. 010601 pulp/paper (1999-2021)

Transition of fatal and non-fatal accidents in workers ages (1999-2021)



Transition of fatal and non-fatal accidents in workers ages in code no. 010601 pulp/paper (1999-2021)

26	Kyoto	1	1					1	1					1	1								1				1	8	Kyoto	
29	Nara	1																									1	2	Nara	
37	Kagawa	8	9	7		7		4	4	3	1	1	2	6	3	1	2	2										60	Kagawa	
33	Okayama	1	5	4		3		4	4	2	4	3	1	2	5	2	2	1	2			2	1					48	Okayama	
14	Kanagawa	3	1	2		5			1	3					2	3	2	1	5	2						3		33	Kanagawa	
13	Tokyo	3	3	3		1		2	1	2	1	1	3	1				2		1		1						25	Tokyo	
44	Oita	2	3	1		1		1	1	1	1		1		1	1		1		1	2		1					19	Oita	
46	Kagoshima	6	2	1				1	1		1	1						1	1	1		1						18	Kagoshima	
32	Shimane	2	2						1		2		1					1	1		1					2			13	Shimane
42	Nagasaki	2	3	2					2		1									1									11	Nagasaki
6	Yamagata	1	2	2		3			2																				10	Yamagata
45	Miyazaki								1	1		1	2	1						1									7	Miyazaki
20	Nagano		2			2													1								1		6	Nagano
47	Okinawa																												3	Okinawa
30	Wakayama		1																										1	Wakayama
	total	317	322	275		234		203	236	183	207	164	161	155	138	143	148	161	136	141	144	124	147	157	3,896			total		

Data source : <https://anzeninfo.mhlw.go.jp/user/anzen/tok/anst00.htm>

Return to https://www.jisha.or.jp/english/statistics/202211_23.html