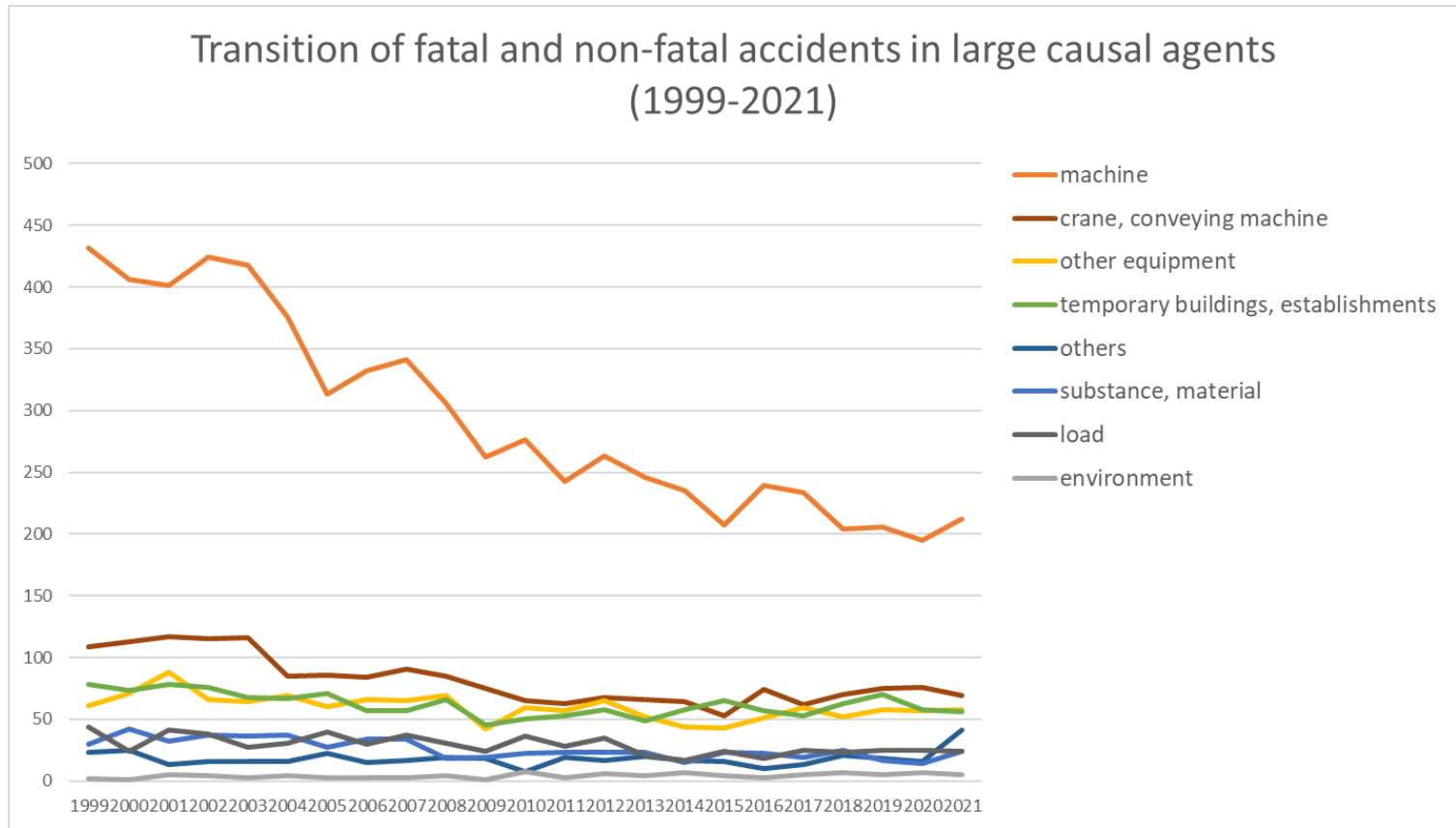
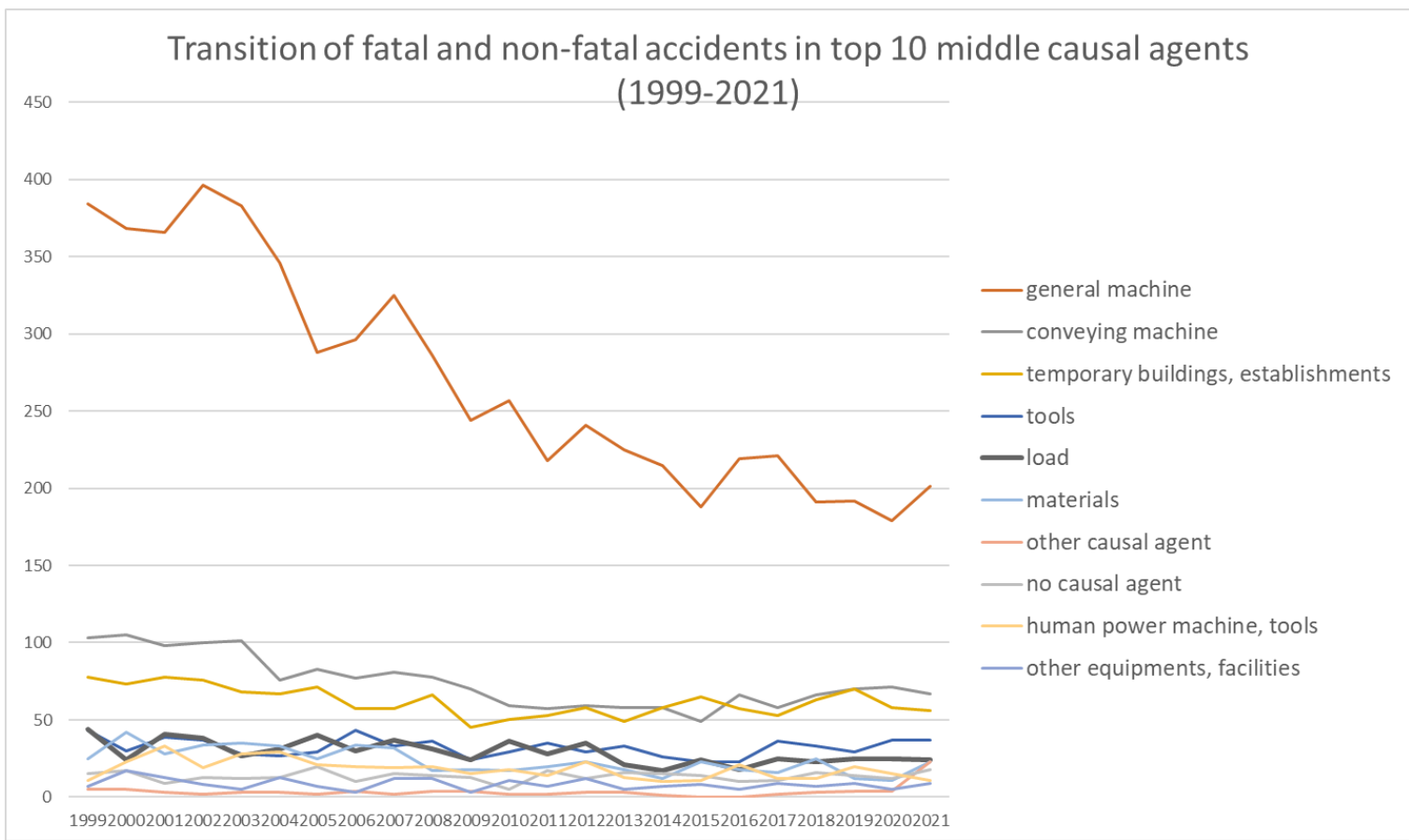


Transition of fatal and non-fatal accidents in each element like as causal agents, type of accidents, etc. in code no. 010602 paper processing products (1999-2021)



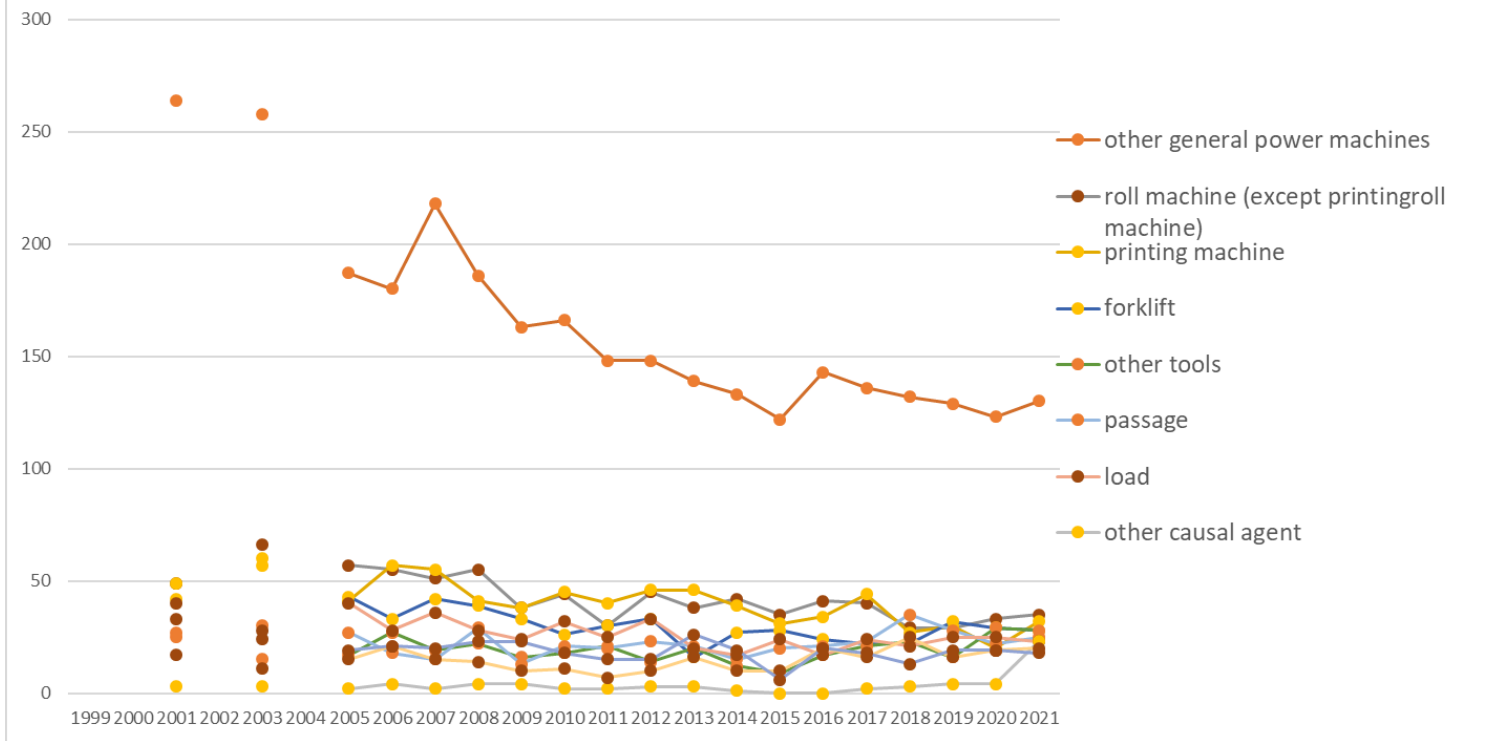
Transition of fatal and non-fatal accidents in large causal agents in code no. 010602 paper processing products (1999-2021)

Transition of fatal and non-fatal accidents in top 10 middle causal agents
(1999-2021)



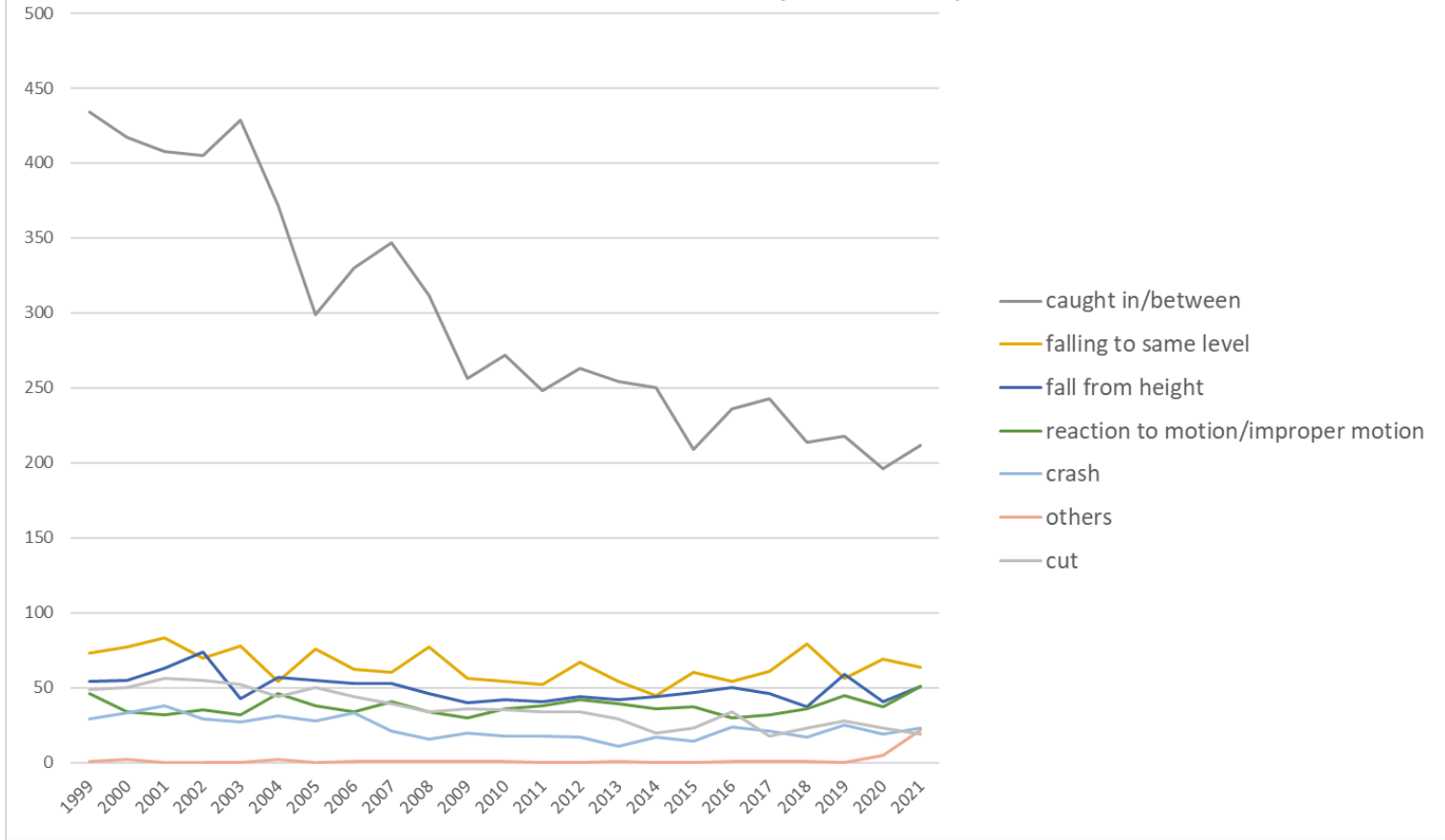
Transition of fatal and non-fatal accidents in middle causal agents in code no. 010602 paper processing products (1999-2021)

Transition of fatal and non-fatal accidents in top 10 small causal agents (1999-2021)



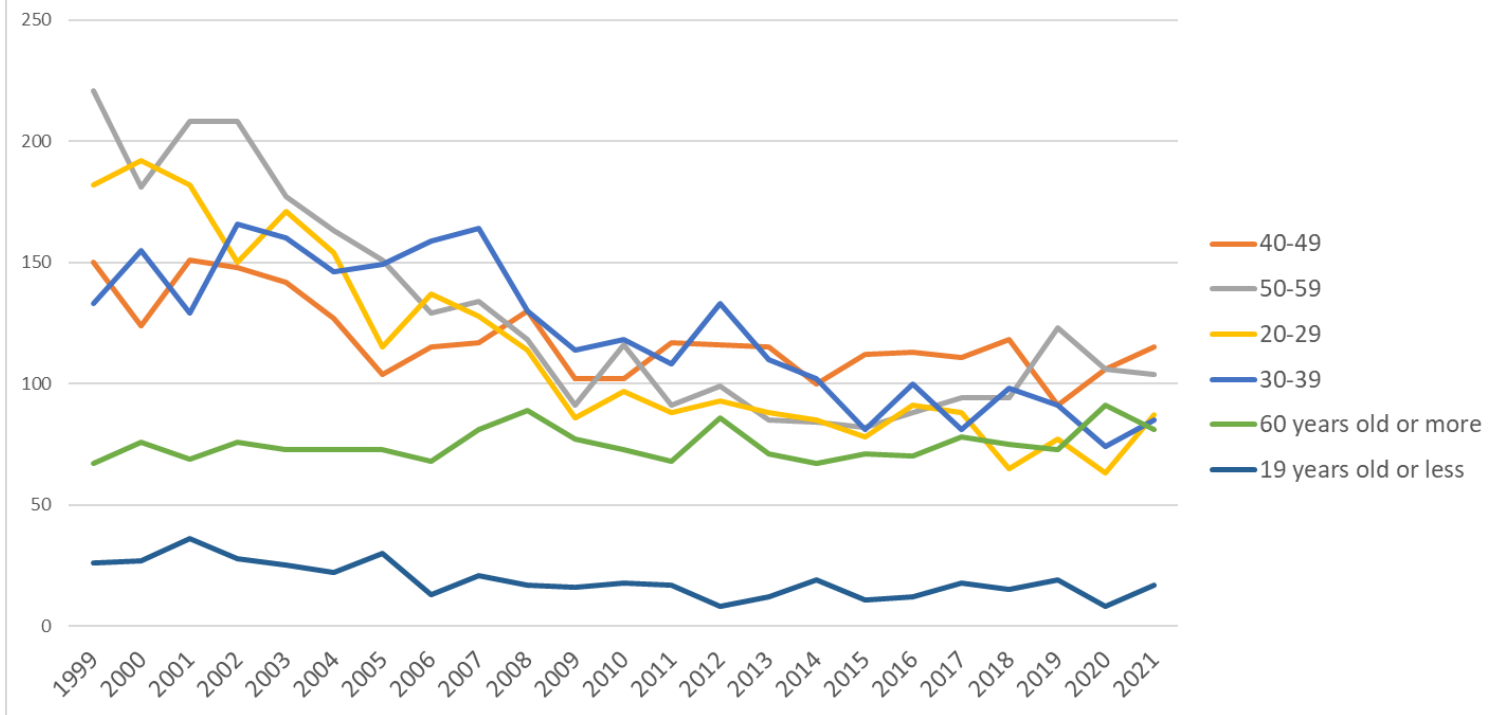
Transition of fatal and non-fatal accidents in small causal agents in code no. 010602 paper processing products (1999-2021)

Transition of fatal and non-fatal accidents in top 7 type of accidents
(1999-2021)



Transition of fatal and non-fatal accidents in type of accidents in code no. 010602 paper processing products (1999-2021)

Transition of fatal and non-fatal accidents in workers ages (1999-2021)



Transition of fatal and non-fatal accidents in workers ages in code no. 010602 paper processing products (1999-2021)

	falling object																									or falling object
11	contact to high/low-temperature	6	7	8	6	4	5	3	4	5	4	5	7	7	7	6	2	3	3	9	7	4	9	7	128	contact to high/low-temperature
05	collapse	13	10	12	13	15	8	14	14	19	17	8	7	4	8	7	7	7	7	3	8	8	7	6	222	collapse
17	traffic accident (public road)	4	3	8	9	2	4	3	3	7	4	1	6	4	5	7	4		5	3	1	1	2	3	89	traffic accident (public road)
09	injury to the sole of the foot					1		1	1			1		1		1	1		1	1	1		1	1	12	injury to the sole of the foot
12	contact to harmful substance	1	1	1	2	1	4	2		2		1	4			2	2		2	1		5	1		32	contact to harmful substance
99	unclassifiable	2	1		1	1	1		1		1	1			1		1	1		1	1				14	unclassifiable
18	traffic accident (others)	1	1	1												1	1				2				7	traffic accident (others)
13	electric shock			1	1	1			1										1		1				6	electric shock
14	explosion						3													1	1				5	explosion
16	fire				1					1			1				1		1						5	fire
15	burst			1						1															2	burst
10	drown													1											1	drown
	total	779	755	775	776	748	685	622	621	645	598	486	524	489	535	481	457	435	474	470	465	474	448	489	13,231	total

Transition of fatal and non-fatal accidents in workers ages in code no. 010602 paper processing products (1999-2021)

code	Age	1999	2000	2001	2002	2003	2004	2005	2006	2007	2008	2009	2010	2011	2012	2013	2014	2015	2016	2017	2018	2019	2020	2021	total	Age
4	40-49	150	124	151	148	142	127	104	115	117	130	102	102	117	116	115	100	112	113	111	118	91	106	115	2,726	40-49

5	50-59	221	181	208	208	177	163	151	129	134	118	91	116	91	99	85	84	82	88	94	94	123	106	104	2,947	50-59
2	20-29	182	192	182	150	171	154	115	137	128	114	86	97	88	93	88	85	78	91	88	65	77	63	87	2,611	20-29
3	30-39	133	155	129	166	160	146	149	159	164	130	114	118	108	133	110	102	81	100	81	98	91	74	85	2,786	30-39
6	60 years old or more	67	76	69	76	73	73	73	68	81	89	77	73	68	86	71	67	71	70	78	75	73	91	81	1,726	60 years old or more
1	19 years old or less	26	27	36	28	25	22	30	13	21	17	16	18	17	8	12	19	11	12	18	15	19	8	17	435	19 years old or less
	total	779	755	775	776	748	685	622	621	645	598	486	524	489	535	481	457	435	474	470	465	474	448	489	13,231	total

Transition of fatal and non-fatal accidents in workers scales in code no. 010602 paper processing products (1999-2021)

code	Workers scale	1999	2000	2001	2002	2003	2004	2005	2006	2007	2008	2009	2010	2011	2012	2013	2014	2015	2016	2017	2018	2019	2020	2021	total	Workers scale
2	10-29	267	250	259	277	254	226	213	205	216	205	170	170	134	164	157	154	124	146	136	137	134	125	132	4,255	10-29
4	50-99	127	129	137	142	133	99	89	96	115	114	81	86	110	103	85	90	77	88	86	100	107	107	101	2,402	50-99
3	30-49	152	164	163	155	159	147	151	140	133	108	96	122	92	114	90	86	91	98	103	85	112	88	95	2,744	30-49
5	100-299	89	71	83	75	66	83	72	86	76	86	75	69	77	71	67	59	66	76	69	71	60	69	70	1,686	100-299
1	9 workers or less	129	129	118	116	131	124	89	87	94	74	59	68	66	70	75	53	63	57	60	60	40	45	62	1,869	9 workers or less
6	300 workers or more	15	12	15	11	5	6	8	7	11	11	5	9	10	13	7	15	14	9	16	12	21	14	29	275	300 workers or more
	total	779	755	775	776	748	685	622	621	645	598	486	524	489	535	481	457	435	474	470	465	474	448	489	13,231	total

Transition of fatal and non-fatal accidents in months in code no. 010602 paper processing products (1999-2021)

code	Month	1999	2000	2001	2002	2003	2004	2005	2006	2007	2008	2009	2010	2011	2012	2013	2014	2015	2016	2017	2018	2019	2020	2021	total	Month
10	October	68	79	62	64	60	67	59	38	66	62	49	51	51	39	56	34	40	47	41	43	48	25	56	1,205	October
9	September	81	58	75	68	65	58	39	46	61	44	39	43	55	41	29	29	48	34	34	25	51	36	50	1,109	September
4	April	64	67	72	62	62	60	37	53	46	54	49	49	48	47	31	44	40	34	53	41	27	42	49	1,131	April

8	August	51	56	47	62	56	52	70	53	55	40	45	49	41	46	42	33	36	42	35	46	38	37	46	1,078	August
3	March	72	75	72	51	71	52	51	52	62	56	45	41	39	51	45	39	32	44	32	44	35	38	44	1,143	March
12	December	67	65	54	61	61	47	51	45	37	35	32	33	31	45	50	43	33	40	37	40	32	52	39	1,030	December
11	November	59	58	52	68	52	56	51	59	46	50	35	38	33	39	41	29	35	32	54	40	42	37	36	1,042	November
6	June	54	72	70	59	71	55	57	61	66	53	35	44	54	41	42	38	32	30	46	41	32	34	35	1,122	June
2	February	56	51	61	63	69	56	48	53	50	49	29	36	31	42	42	40	30	45	35	47	37	28	35	1,033	February
5	May	65	64	68	67	54	56	50	49	51	44	41	39	34	43	35	32	33	30	33	26	42	42	34	1,032	May
7	July	67	46	73	86	60	46	55	53	55	64	44	44	40	54	31	52	42	49	37	39	45	35	33	1,150	July
1	January	75	64	69	65	67	80	54	59	50	47	43	57	32	47	37	44	34	47	33	33	45	42	32	1,156	January
	total	779	755	775	776	748	685	622	621	645	598	486	524	489	535	481	457	435	474	470	465	474	448	489	13,231	total

Transition of fatal and non-fatal accidents in prefectures in code no. 010602 paper processing products (1999-2021)

code	Prefecture	1999	2000	2001	2002	2003	2004	2005	2006	2007	2008	2009	2010	2011	2012	2013	2014	2015	2016	2017	2018	2019	2020	2021	total	Prefecture
11	Saitama	43	60	47		65		45	50	55	49	36	50	34	47	38	33	36	44	41	48	54	46	50	971	Saitama
23	Aichi	60	53	47		53		41	37	45	40	30	47	41	42	31	34	42	38	44	42	42	32	48	889	Aichi
27	Osaka	87	74	94		73		59	57	74	58	47	46	59	53	49	36	35	40	41	41	30	30	43	1,126	Osaka
22	Shizuoka	73	71	77		72		59	57	56	60	36	61	35	51	36	44	40	44	42	44	42	40	42	1,082	Shizuoka
28	Hyogo	42	47	40		27		26	25	31	25	25	15	26	26	18	25	20	22	17	24	28	20	20	549	Hyogo
13	Tokyo	30	30	31		35		22	16	18	26	16	22	21	15	17	13	13	11	16	15	7	10	20	404	Tokyo
38	Ehime	42	41	49		42		39	34	34	29	33	24	33	28	26	31	25	30	28	27	36	27	19	677	Ehime
14	Kanagawa	40	34	23		38		42	30	18	25	16	25	16	31	19	14	16	19	20	9	10	12	18	475	Kanagawa
12	Chiba	25	24	34		11		15	20	17	18	19	17	13	8	12	10	7	8	12	5	10	8	18	311	Chiba
8	Ibaraki	20	20	13		17		13	15	19	21	18	11	11	14	12	11	13	13	10	18	9	14	17	309	Ibaraki
29	Nara	7	8	13		12		6	13	13	20	13	11	7	8	7	7	13	11	9	10	19	8	17	232	Nara

9	Tochigi	14	11	16		13		14	11	7	8	11	10	12	15	9	12	10	8	10	10	6	11	14	232	Tochigi
21	Gifu	29	27	22		29		30	19	24	24	14	9	12	24	10	10	16	17	14	11	15	21	13	390	Gifu
26	Kyoto	12	28	26		22		14	14	27	15	15	9	16	17	18	13	10	11	19	13	14	7	12	332	Kyoto
25	Shiga	9	12	10		24		10	14	13	12	14	8	8	10	10	12	9	8	7	8	10	10	11	229	Shiga
15	Niigata	9	12	8		12		5	7	4	8	8	8	7	9	11	6	9	6	8	4	5	9	11	166	Niigata
16	Toyama	8	7	6		14		2	13	12	2	7	9	11	8	7	3	7	7	5	3	4	4	10	149	Toyama
7	Fukushima	8	14	11		7		4	10	8	9	5	8	8	9	7	7	10	11	6	6	5	4	9	166	Fukushima
40	Fukuoka	18	16	15		16		25	13	18	18	11	7	14	14	13	9	8	15	15	17	17	12	8	299	Fukuoka
37	Kagawa	11	13	11		23		15	9	19	10	9	8	15	8	12	16	7	6	14	7	8	13	8	242	Kagawa
33	Okayama	8	12	8		17		13	8	15	8	4	15	9	14	9	14	4	7	9	9	5	11	7	206	Okayama
6	Yamagata	12	2	10		2		4	2	7	2	5	6	4	4	5	5	2	5	2	4	5	3	7	98	Yamagata
34	Hiroshima	11	15	18		9		13	11	15	9	16	6	6	6	12	12	8	7	7	11	10	7	6	215	Hiroshima
1	Hokkaido	15	9	16		6		4	8	14	9	5	7	6	10	15	4	9	11	6	4	7	7	6	178	Hokkaido
10	Gunma	13	9	8		12		15	11	5	8	8	9	8	8	9	8	7	8	2	9	7	7	6	177	Gunma
4	Miyagi	15	7	7		10		3	7	4	9	3	4	5	3	5	7	2	3	5	3	5	1	6	114	Miyagi
24	Mie	13	14	9		14		16	14	6	14	6	10	3	8	6	6	5	5	7	4	12	5	4	181	Mie
20	Nagano	8	7	10		8		8	13	6	9	10	4	6	6	10	7	8	7	3	7	7	8	4	156	Nagano
30	Wakayama	5	7	2		5		5	8	4	5	10	2	3	4	4	6	5	4	6	9	2	6	4	106	Wakayama
19	Yamanashi	12	5	9		4		4	12	4	2		2	2	4	2	5	3	4	2	2	1	4	4	87	Yamanashi
35	Yamaguchi	7	7	5		5		7	8	5	5	2	7	6	5		4	3	2	3	5	4	2	3	95	Yamaguchi
17	Ishikawa	3	8	5		5		6	6	2	6	3	5	2	3	3	2	2	3	2	5	6	3	3	83	Ishikawa
31	Tottori	3	4	2		2		2	1		1	4	2	1	2	2	1		1		4	3	7	3	45	Tottori
44	Oita	1	1	3		1		1	4	4		1	3	3		2	3	4	1	3	1	2	1	3	42	Oita
41	Saga	13	4	4		2		1	8	2	8	1	8	4	3	4	2	5	5	5	4	5	13	2	103	Saga

43	Kumamoto	7	5	8	6	3	7	7	3	3	3	1	3	5	6	3	4	2	2	3	2	83	Kumamoto	
45	Miyazaki	2	4	5	1	3	1	4	3	1	1	2	1	1	1	1	1	1	2	2	35	Miyazaki		
47	Okinawa	1	2	2	2	1	1			4	1	4	1	1	2	1	3		2	2	30	Okinawa		
18	Fukui	5	4	11	4	7	4	1	4	8	6	4	3	10	3	4	4	2	4	4	4	1	97	Fukui
36	Tokushima	6	6	10	4	3	3	8	4	2	3	2	2	3	2	5	1	4	3	1	72	Tokushima		
2	Aomori	1	1	3	3	1	3	2	3			4	1	3	5	1	4	3	2	1	3	1	45	Aomori
3	Iwate	3	4	3	2	1	2	2	2		4	1	4	2	4	1	1	2		1	3	1	43	Iwate
32	Shimane	5	3	2	2	2	1	3	4			1	1	1	3	1		1	3	1		1	35	Shimane
42	Nagasaki	4	3	3	2	1	1	1			3	1	1	2	2		1	2	1	2		1	31	Nagasaki
5	Akita	2	2	2	2	1		1							1	2		1	2	2	1	19	Akita	
39	Kochi	16	6	12	10	9	9	9	3	6	5	6	2	1	2	3	12	7	4	2	2		126	Kochi
46	Kagoshima	1	2	5	3	2	4	2	3	3	1	1	2			1	2	2	1	2	1		38	Kagoshima
	total	779	755	775	748	622	621	645	598	486	524	489	535	481	457	435	474	470	465	474	448	489	11,770	total

Data source : <https://anzeninfo.mhlw.go.jp/user/anzen/tok/anst00.htm>

Return to https://www.jisha.or.jp/english/statistics/202211_23.html