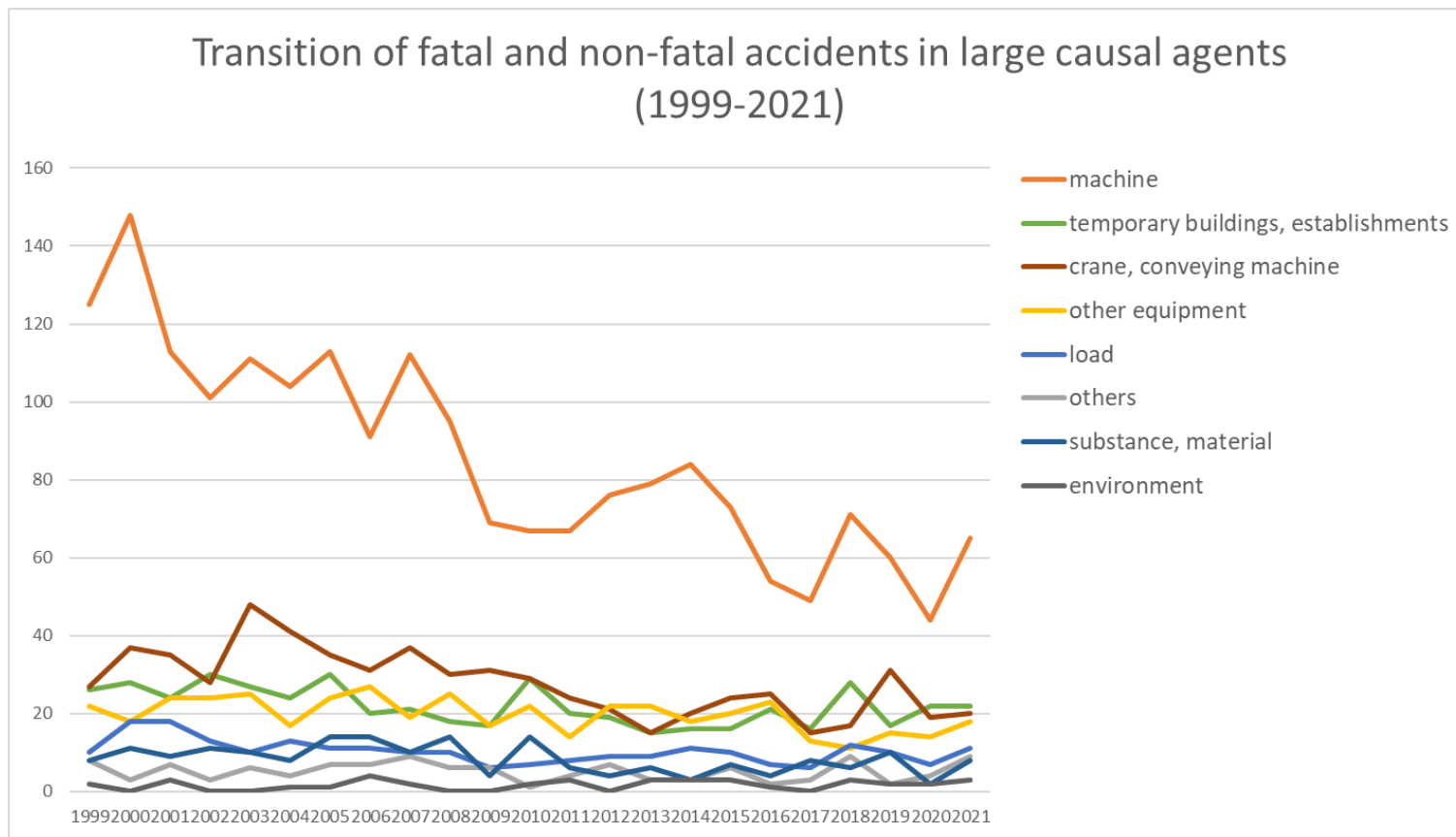
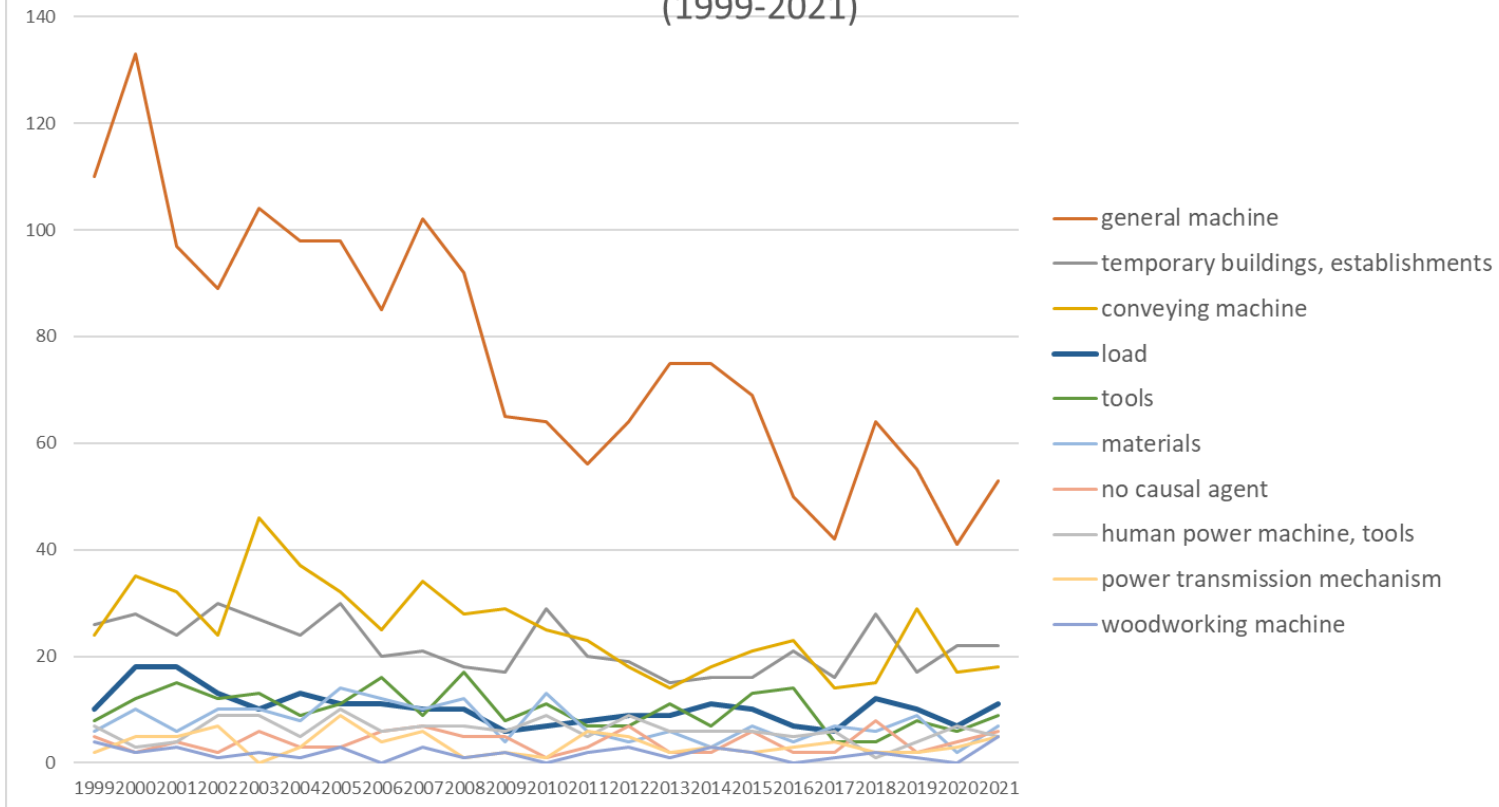


Transition of fatal and non-fatal accidents in each element like as causal agents, type of accidents, etc. in code no. 010609 other pulp/paper processing products (1999-2021)



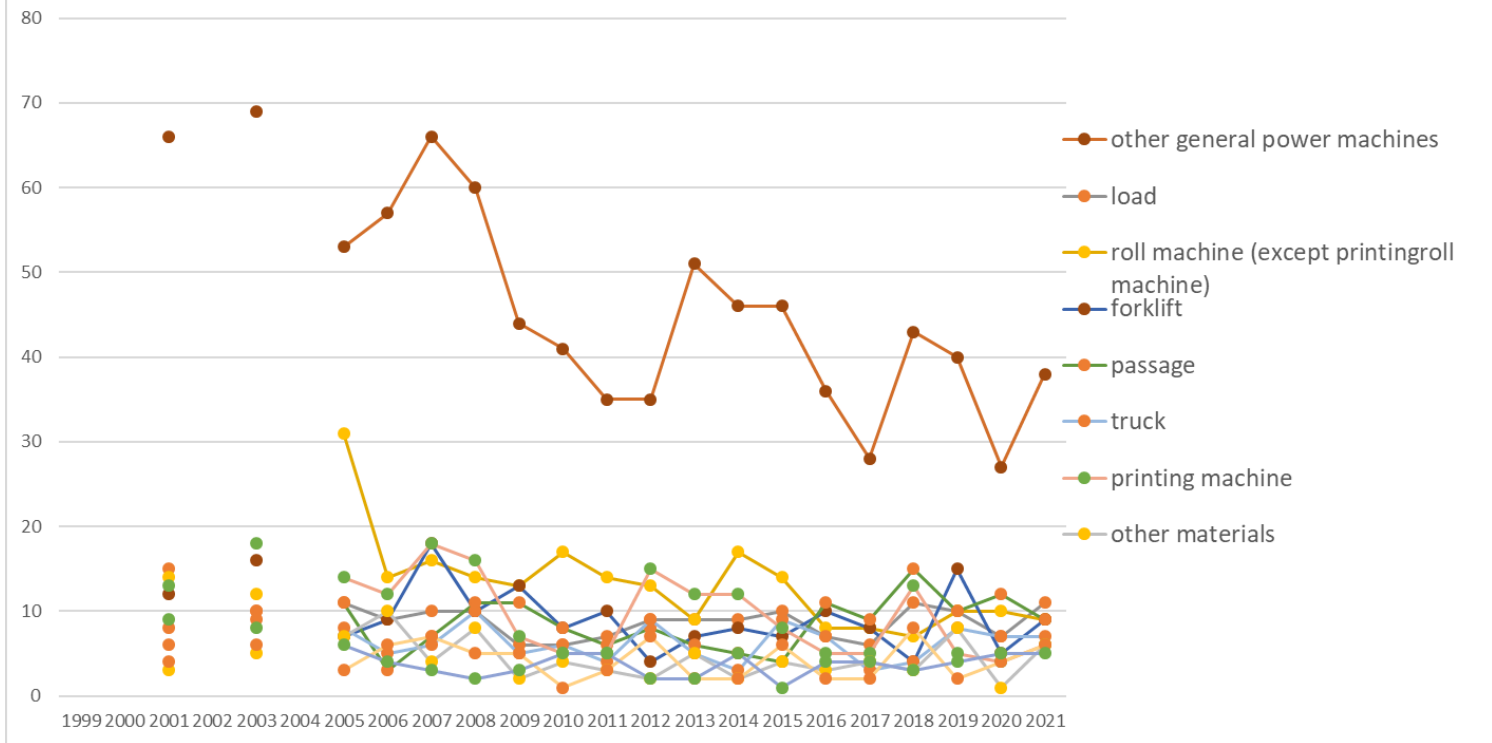
Transition of fatal and non-fatal accidents in large causal agents in code no. 010609 other pulp/paper processing products (1999-2021)

Transition of fatal and non-fatal accidents in top 10 middle causal agents (1999-2021)



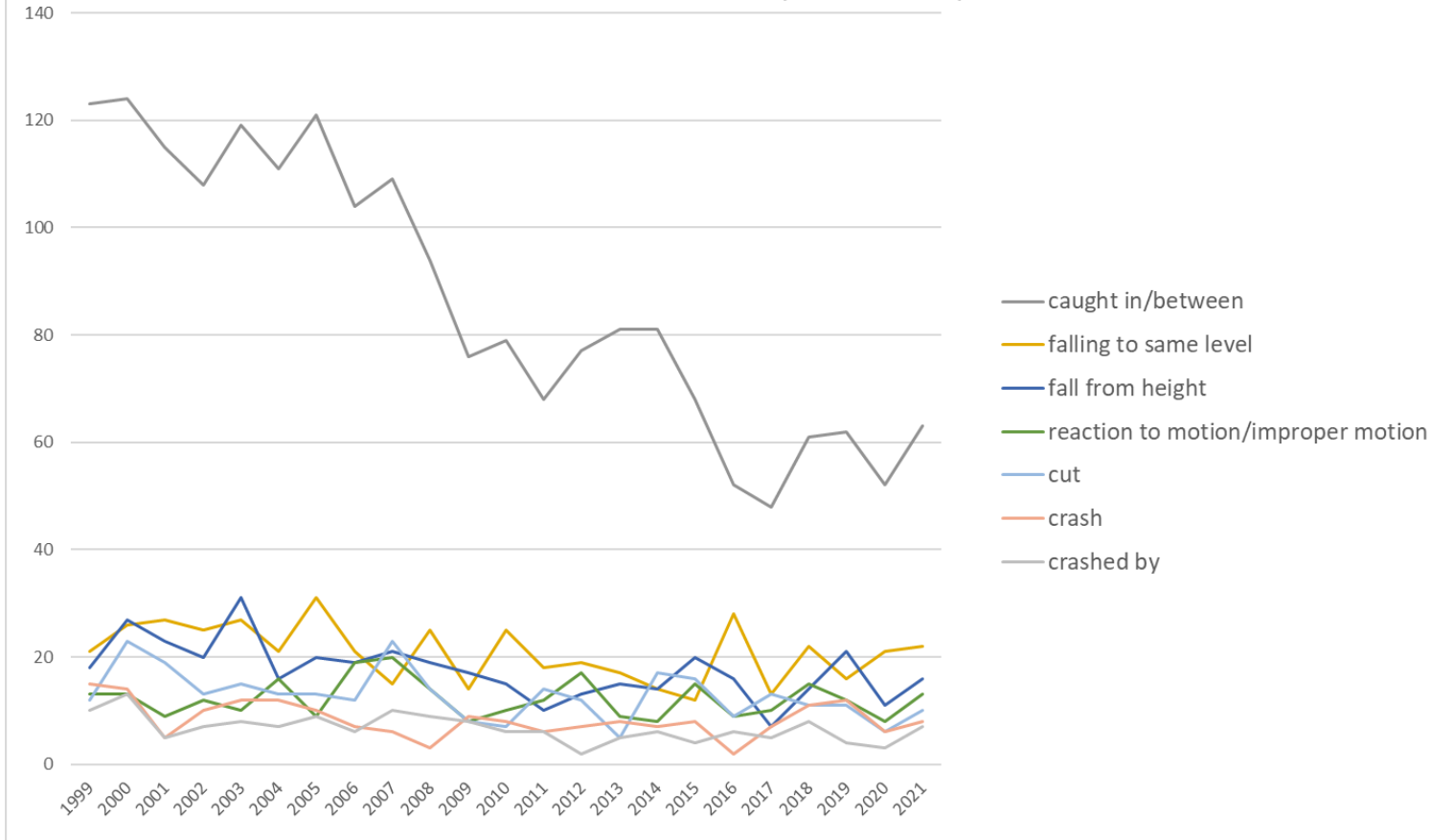
Transition of fatal and non-fatal accidents in middle causal agents in code no. 010609 other pulp/paper processing products (1999-2021)

Transition of fatal and non-fatal accidents in top 10 small causal agents (1999-2021)



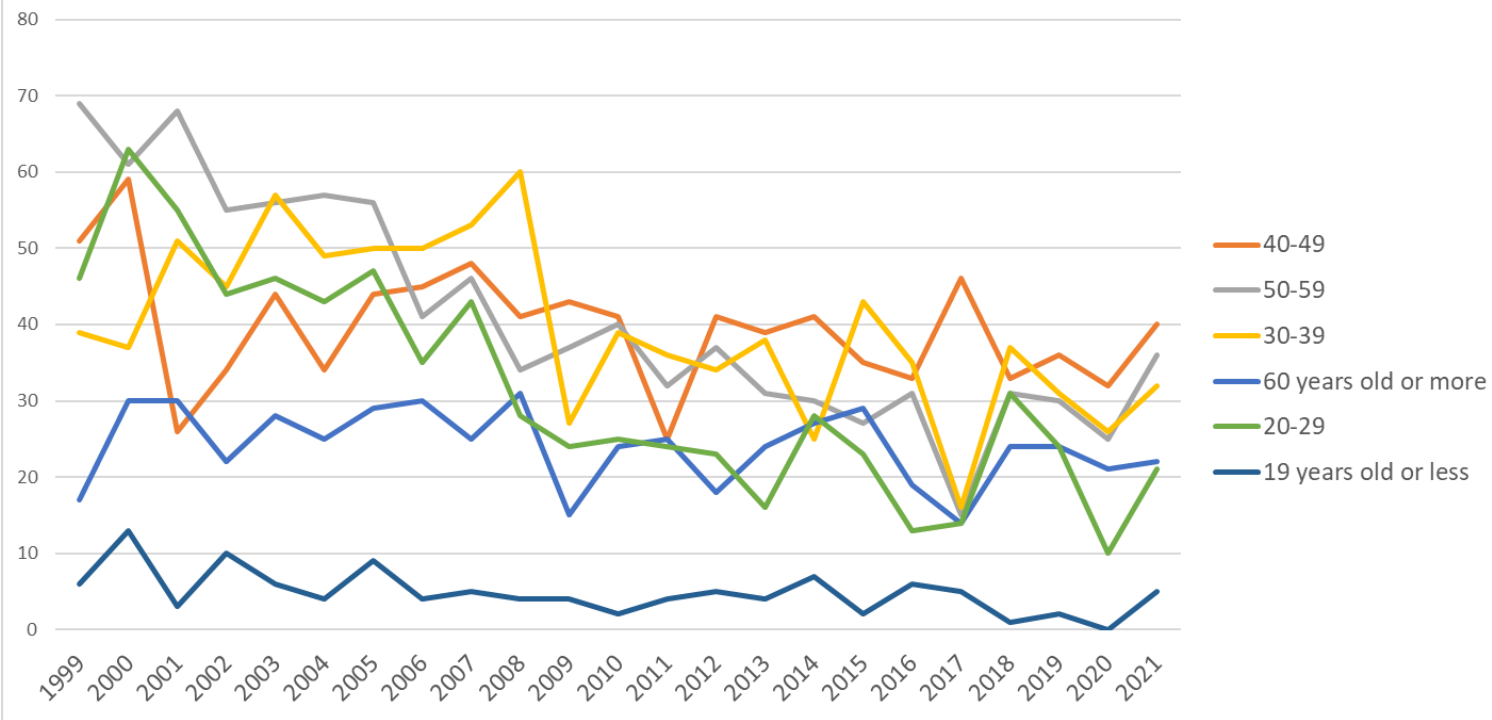
Transition of fatal and non-fatal accidents in small causal agents in code no. 010609 other pulp/paper processing products (1999-2021)

Transition of fatal and non-fatal accidents in top 7 type of accidents
(1999-2021)



Transition of fatal and non-fatal accidents in type of accidents in code no. 010609 other pulp/paper processing products (1999-2021)

Transition of fatal and non-fatal accidents in workers ages (1999-2021)



Transition of fatal and non-fatal accidents in workers ages in code no. 010609 other pulp/paper processing products (1999-2021)

18	Fukui	3	2	4		1		2	5	3	1		2	2	2	1	3	1	3	1	1	1			38	Fukui
36	Tokushima	2	3			6		1	2			2	1		2	1	4	1	2	1		5	2		35	Tokushima
4	Miyagi	1	4	3		3		1	5	4	2	1	2	2	1		1	1		1	1		1		34	Miyagi
19	Yamanashi	6	4	3		2		2		1	2	1	1	1	2		1		1						27	Yamanashi
45	Miyazaki		1	1		1		1			4	1	2	2	1	2	2	2			1				21	Miyazaki
43	Kumamoto	2	1	1		1		2	1	2				1			1	1		4	1	1			19	Kumamoto
17	Ishikawa	2	1	2		2						1	1	3		1	1	1			2				17	Ishikawa
44	Oita	2	1	3		2		1	1					1	1						2				14	Oita
2	Aomori	1				1					2	1	1		2	1	2				2				13	Aomori
6	Yamagata	2	3	1						1						2						1			10	Yamagata
31	Tottori	2	1	2				1													1				7	Tottori
46	Kagoshima			1						1						2	1					1			6	Kagoshima
30	Wakayama			2		2																	1		5	Wakayama
32	Shimane	1	1	1																			1		4	Shimane
47	Okinawa					1			1																2	Okinawa
	total	228	263	233		237		235	205	220	198	150	171	146	158	152	158	159	137	110	157	147	114	156	3,734	total

Data source : <https://anzeninfo.mhlw.go.jp/user/anzen/tok/anst00.htm>

Return to https://www.jisha.or.jp/english/statistics/202211_23.html