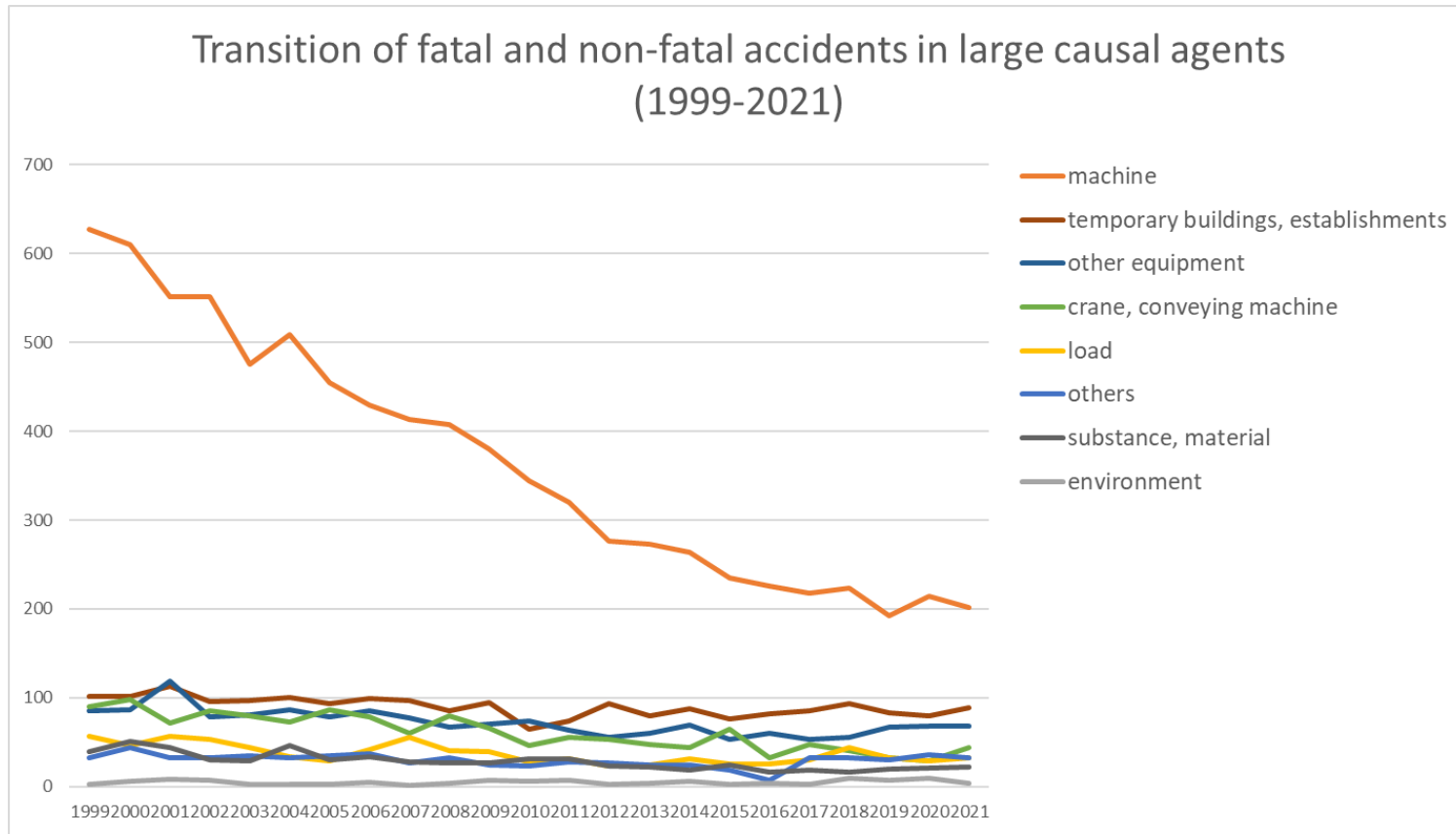
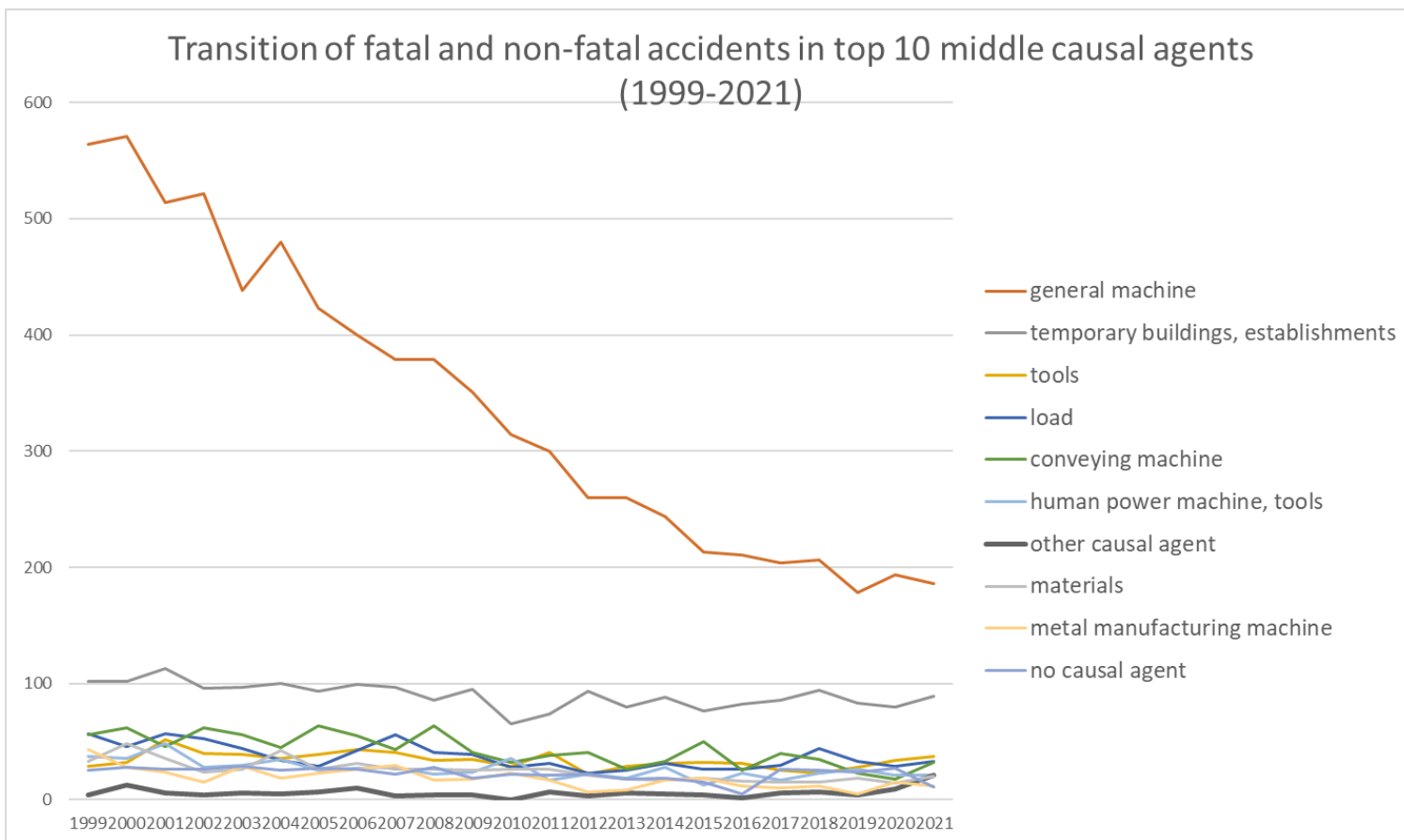


Transition of fatal and non-fatal accidents in each element like as causal agents, type of accidents, etc. in code no. 0107 printing/bookbinding (1999-2021)

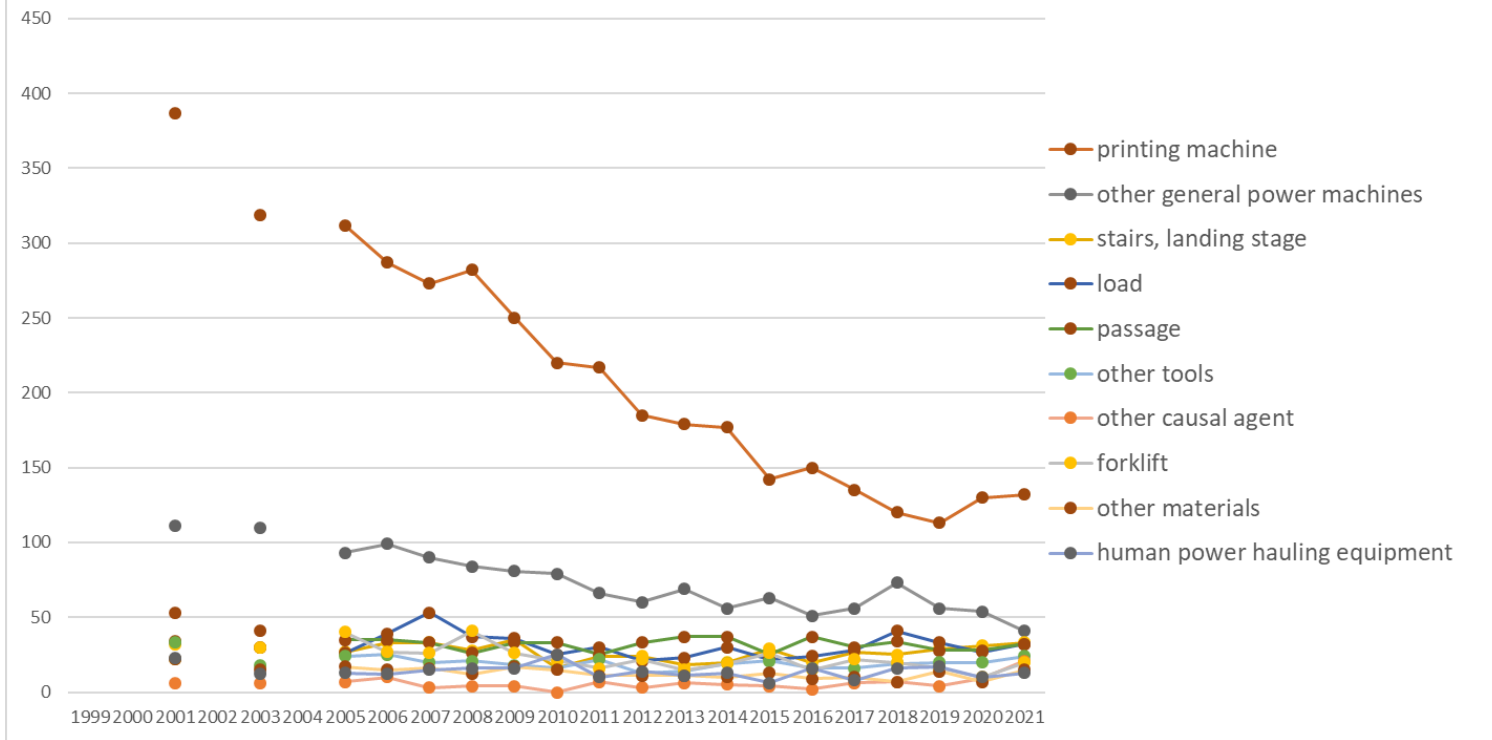


Transition of fatal and non-fatal accidents in large causal agents in code no. 0107 printing/bookbinding (1999-2021)



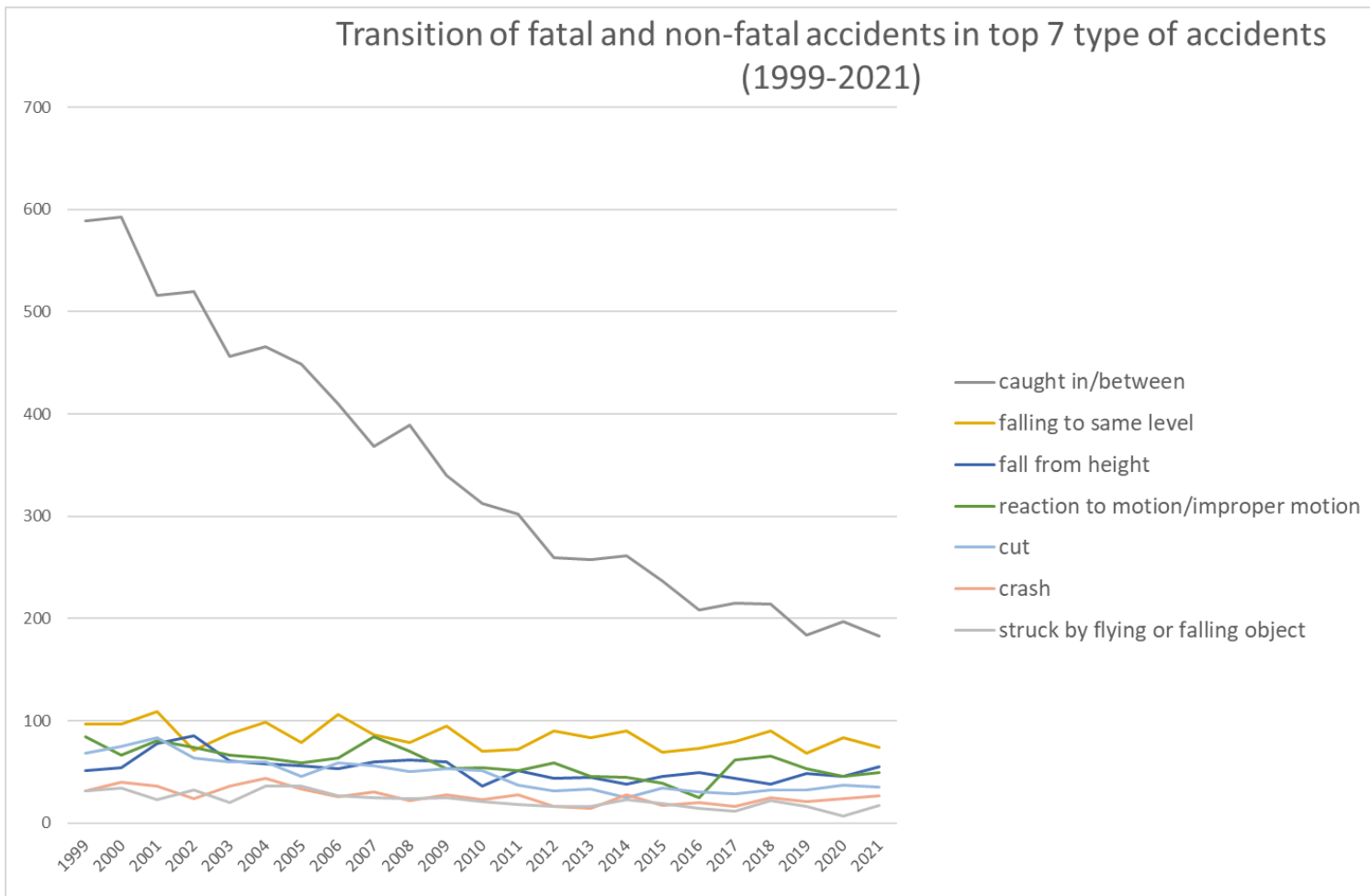
Transition of fatal and non-fatal accidents in middle causal agents in code no. 0107 printing/bookbinding (1999-2021)

Transition of fatal and non-fatal accidents in top 10 small causal agents (1999-2021)



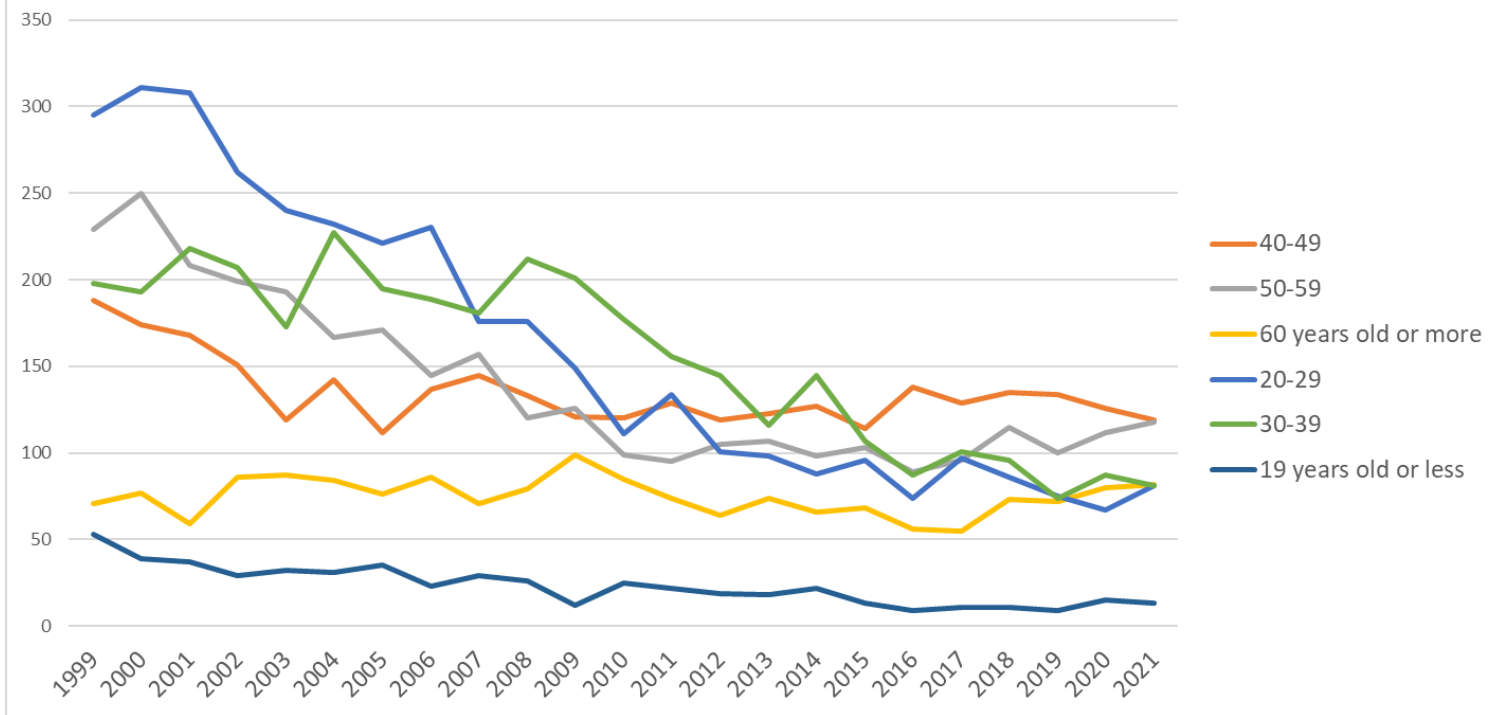
Transition of fatal and non-fatal accidents in small causal agents in code no. 0107 printing/bookbinding (1999-2021)

Transition of fatal and non-fatal accidents in top 7 type of accidents
(1999-2021)



Transition of fatal and non-fatal accidents in type of accidents in code no. 0107 printing/bookbinding (1999-2021)

Transition of fatal and non-fatal accidents in workers ages (1999-2021)



Transition of fatal and non-fatal accidents in workers ages in code no. 0107 printing/bookbinding (1999-2021)

2	February	90	104	71	83	71	68	72	61	64	58	47	56	43	50	43	42	49	47	40	43	40	33	48	1,323	February
1	January	82	64	68	72	70	70	65	75	56	60	60	51	55	48	42	35	45	42	41	46	39	40	46	1,272	January
8	August	85	104	86	77	59	67	79	71	54	57	57	49	42	49	38	36	38	36	37	49	36	44	45	1,295	August
6	June	93	91	92	79	89	77	74	73	49	70	63	49	44	52	51	46	47	35	45	34	39	43	43	1,378	June
5	May	74	84	85	93	73	70	56	77	66	61	49	48	55	36	39	45	37	37	25	39	37	39	43	1,268	May
4	April	88	74	101	70	76	66	78	75	86	69	67	53	50	44	37	47	42	34	43	40	40	43	42	1,365	April
9	September	87	76	85	64	76	80	64	60	60	62	53	58	58	44	47	46	53	30	42	39	39	34	42	1,299	September
10	October	106	98	87	95	59	87	79	64	54	61	72	46	40	45	69	49	39	42	41	36	41	47	35	1,392	October
12	December	73	75	76	56	63	62	57	64	51	62	57	36	50	42	32	45	31	41	39	37	29	47	33	1,158	December
7	July	70	90	86	95	81	74	54	62	71	70	67	48	54	42	59	45	34	44	49	45	41	36	32	1,349	July
11	November	88	84	88	65	52	70	64	59	62	56	53	59	51	42	40	45	39	41	38	49	38	34	32	1,249	November
	total	1,034	1,044	998	934	844	883	810	810	759	746	708	617	610	553	536	546	501	453	489	516	464	487	494	15,836	total

Transition of fatal and non-fatal accidents in prefectures in code no. 0107 printing/bookbinding (1999-2021)

code	Prefecture	1999	2000	2001	2002	2003	2004	2005	2006	2007	2008	2009	2010	2011	2012	2013	2014	2015	2016	2017	2018	2019	2020	2021	total	Prefecture
11	Saitama	134	115	133		129		128	112	126	106	109	90	81	79	65	76	85	62	78	84	55	65	69	1,981	Saitama
27	Osaka	146	128	141		108		92	109	88	93	80	82	64	57	59	58	43	41	69	59	59	58	52	1,686	Osaka
13	Tokyo	191	165	141		142		106	111	104	97	84	78	83	60	62	64	53	56	54	50	53	50	45	1,849	Tokyo
23	Aichi	59	73	58		51		51	47	40	39	39	38	35	47	33	40	19	23	28	27	33	31	30	841	Aichi
8	Ibaraki	22	24	18		23		24	22	14	21	19	12	15	21	14	13	13	16	11	17	16	20	23	378	Ibaraki
14	Kanagawa	30	38	26		25		21	23	17	18	17	17	16	18	17	14	12	11	8	7	16	6	22	379	Kanagawa
28	Hyogo	28	32	38		25		20	41	31	36	17	21	16	6	13	10	14	17	21	14	14	14	21	449	Hyogo
26	Kyoto	23	28	33		16		27	33	32	21	22	14	23	20	19	29	21	17	18	11	14	14	18	453	Kyoto
22	Shizuoka	31	41	30		21		23	33	27	25	17	20	28	19	14	17	22	13	14	17	19	13	15	459	Shizuoka

40	Fukuoka	41	43	39		26		35	34	32	27	36	28	31	22	22	19	29	22	15	23	21	26	13	584	Fukuoka
12	Chiba	31	31	24		30		26	20	19	19	20	10	20	20	18	20	9	14	13	17	17	15	13	406	Chiba
15	Niigata	17	16	28		12		14	15	10	18	8	11	13	6	11	9	10	7	9	13	7	5	10	249	Niigata
37	Kagawa	17	20	11		7		13	23	8	13	16	9	6	11	7	14	13	9	10	9	6	9	10	241	Kagawa
4	Miyagi	12	10	12		13		9	9	14	12	9	13	5	8	10	9	3	6	16	6	4	10	10	200	Miyagi
21	Gifu	15	18	26		6		23	10	13	16	22	14	11	16	15	10	7	9	9	16	8	7	9	280	Gifu
33	Okayama	9	11	7		14		16	16	13	17	11	6	8	4	6	15	12	7	10	11	6	9	9	217	Okayama
29	Nara	6	9	9		5		7	18	8	12	11	10	7	12	5	13	13	4	3	6	5	9	9	181	Nara
7	Fukushima	8	11	13		10		15	7	10	11	11	7	7	2	8	7	6	5	7	3	3	9	9	169	Fukushima
43	Kumamoto	9	10	12		6		6	5	3	2	10	5	11	7	7	3	6	3	2	4	6	5	9	131	Kumamoto
10	Gunma	11	12	16		9		11	4	11	7	6	10	13	5	9	9	4	9	6	5	3	9	8	177	Gunma
34	Hiroshima	16	23	23		11		8	13	15	5	12	9	4	7	7	5	8	10	8	11	7	5	7	214	Hiroshima
9	Tochigi	16	9	5		9		5	6	10	6	7	6	6	9	6	5	5	6	5	10	4	8	7	150	Tochigi
1	Hokkaido	25	30	26		14		17	8	13	21	11	10	13	10	15	11	14	9	10	14	12	9	6	298	Hokkaido
25	Shiga	15	9	9		5		7	10	5	7	17	10	9	11	6	7	14	10	9	17	3	11	6	197	Shiga
17	Ishikawa	3	11	8		5		7	6	7	7	12	5	5	7	6	9	7	6	7	8	7	7	5	145	Ishikawa
16	Toyama	12	11	5		18		8	4	3	6	4	4	5	5	3	5	3	5	1	7	2	8	5	124	Toyama
38	Ehime	12	9	9		9		7	6	9	3	5	3	10	4	4	4	2	3	3	4	3	6	5	120	Ehime
19	Yamanashi	1	2			2		2	2	3	2	3	2	2	3	3	1	2	1	1	2	3	1	5	43	Yamanashi
24	Mie	6	12	11		11		8	2	6	9	11	7	3	6	7	4	6	3	8	2	10	7	4	143	Mie
35	Yamaguchi	4	7	9		10		3	4	5	2		6	3	2	2	1	7	7	3	3	1	2	4	85	Yamaguchi
36	Tokushima	2	9	2		4		8	1	2	5	6	3	5	3	2	2	2	3	3		3	4	4	73	Tokushima
2	Aomori	3	3	7		4		5	4	5	3	5	2	4	2	5	1	1	1		1	2	2	4	64	Aomori
46	Kagoshima	4	5	4		2		2	1	2	5	3	1	1	2	4	1	2	2		4	2	2	4	53	Kagoshima

20	Nagano	16	17	10		8		8	4	7	14	4	7	9	11	13	9	8	7	10	4	9	2	3	180	Nagano
6	Yamagata	6	8	8		4		6	6	4	6	5	6	1	5	6	3	3	2	1	4	3	4	3	94	Yamagata
3	Iwate	8	9	8		2		4	4	3	5	5	4	8	1	5	1	2		2	3	6	4	3	87	Iwate
18	Fukui	4	3	4		4		2	7	4	4	6	3	2	3	2	4	4	5	1	5	2	2	3	74	Fukui
42	Nagasaki	6	3	6		5		3	11	1		3	1	2	4	2	6		3	5		3	1	3	68	Nagasaki
30	Wakayama	2	5	2		5		5	1	5	8	3	3	5	4	2	1	2	5		2	1	2	3	66	Wakayama
41	Saga	3	3	1		2		6		1	1		2	2	2	3	3	3	1	2	3	1	5	2	46	Saga
44	Oita	4	4	5		4		4	5	3	3	3	4	2	3	2	3	1	2	4	4	1	2	1	64	Oita
45	Miyazaki	3	3	3		6		1		3	2	5	5	5	3	4	1	2	5	2	2	1	6	1	63	Miyazaki
5	Akita	4	1	3		2		4	4	3	3	2	4	3	1		3	2	3	1	1	3	1	1	49	Akita
31	Tottori	4	3			2		2	3	3		3	3	2	1	2		1	1			2		1	33	Tottori
39	Kochi	6	3	4		4		5	3	6	3	3	4	2	2	5	4	1		1	3	4	1		64	Kochi
47	Okinawa	5	2	7		9		4	1	8	3	1	5	2	2	4	1	3	2	1	1	1	1		63	Okinawa
32	Shimane	4	5	4		5		2	2	3	3	5	3	2		2	2	2			2	3			49	Shimane
	total	1,034	1,044	998		844		810	810	759	746	708	617	610	553	536	546	501	453	489	516	464	487	494	14,019	total

Data source : <https://anzeninfo.mhlw.go.jp/user/anzen/tok/anst00.htm>

Return to https://www.jisha.or.jp/english/statistics/202211_23.html