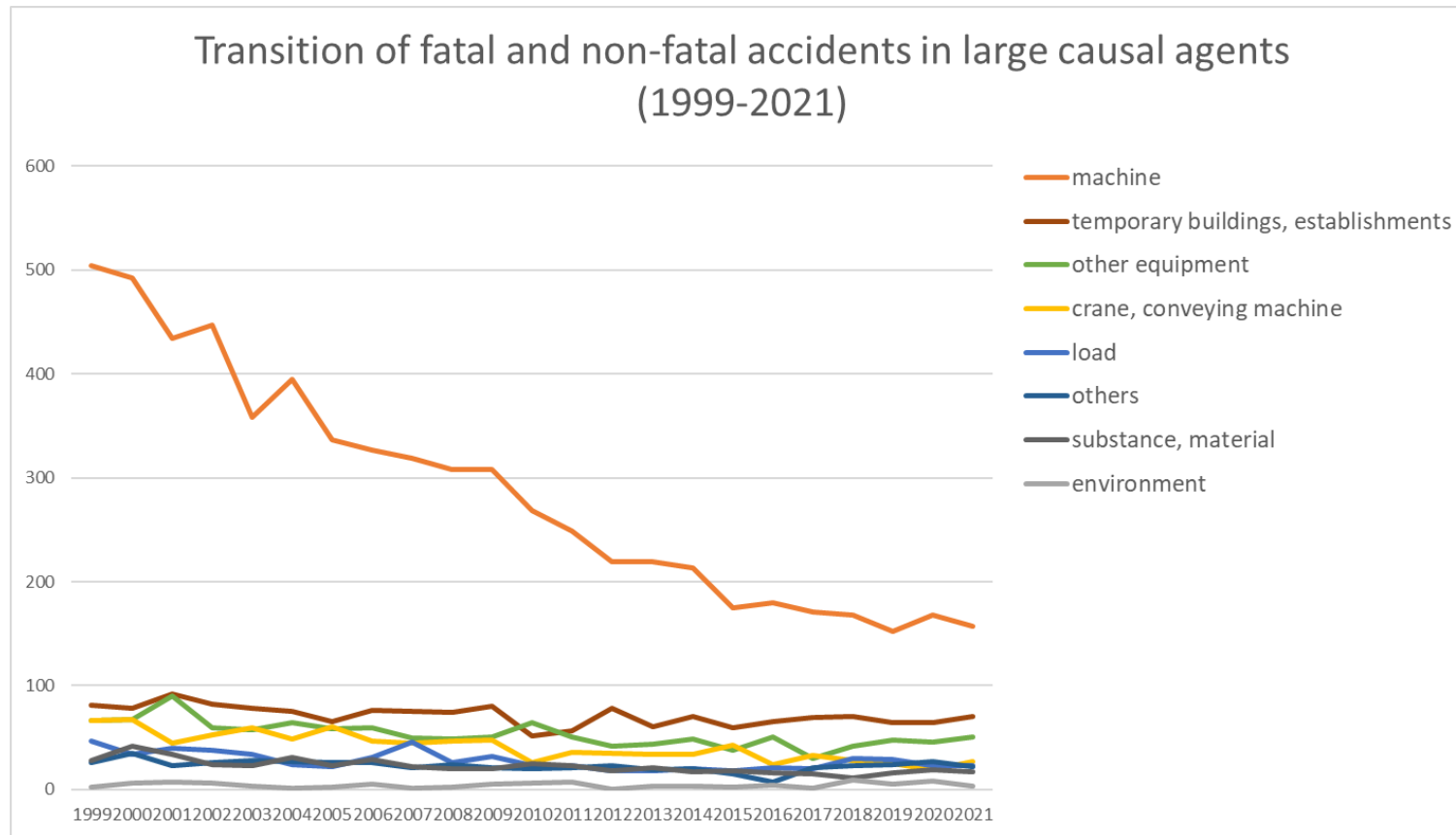
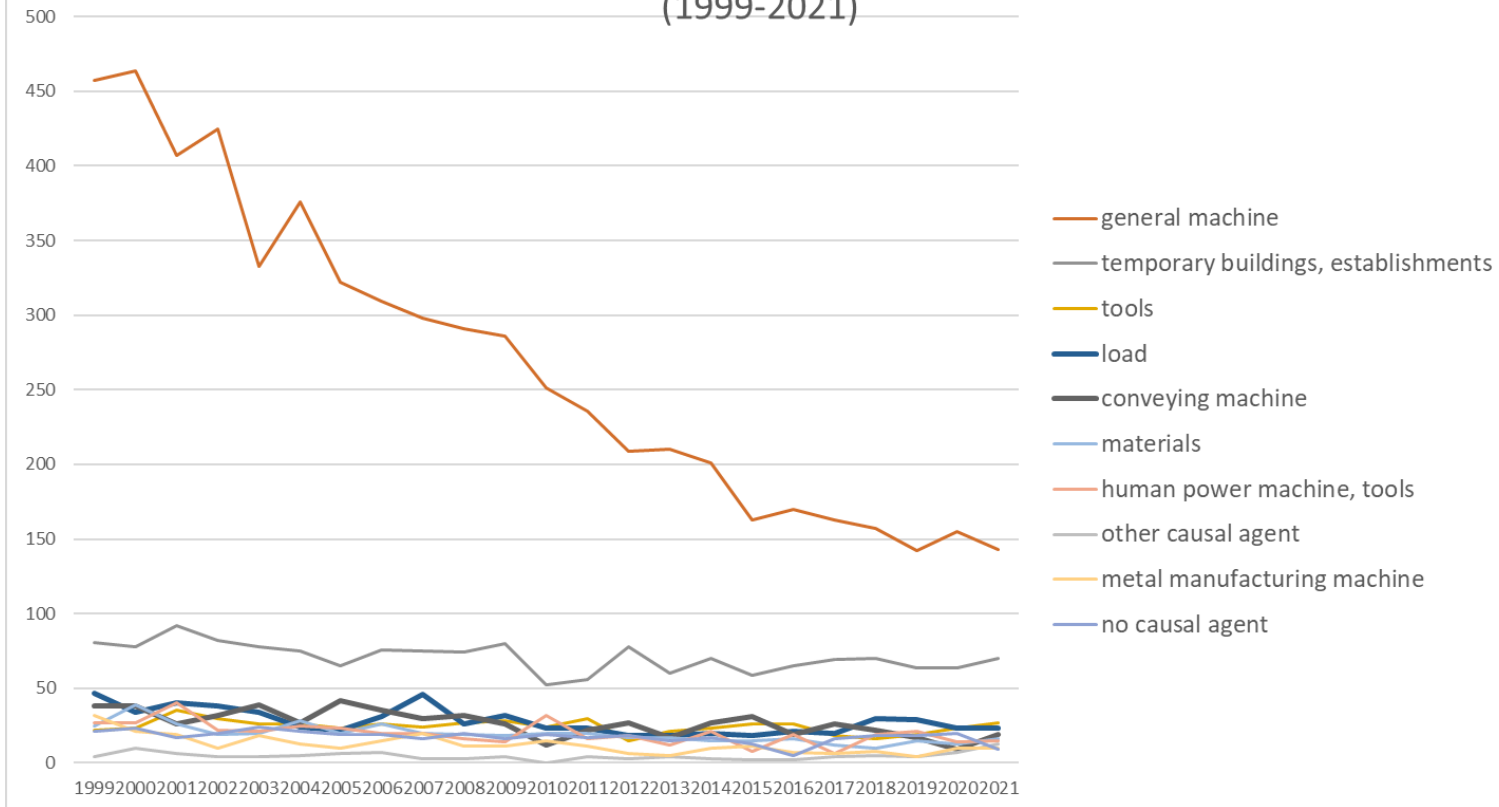


Transition of fatal and non-fatal accidents in each element like as causal agents, type of accidents, etc. in code no. 010701 printing service (1999-2021)



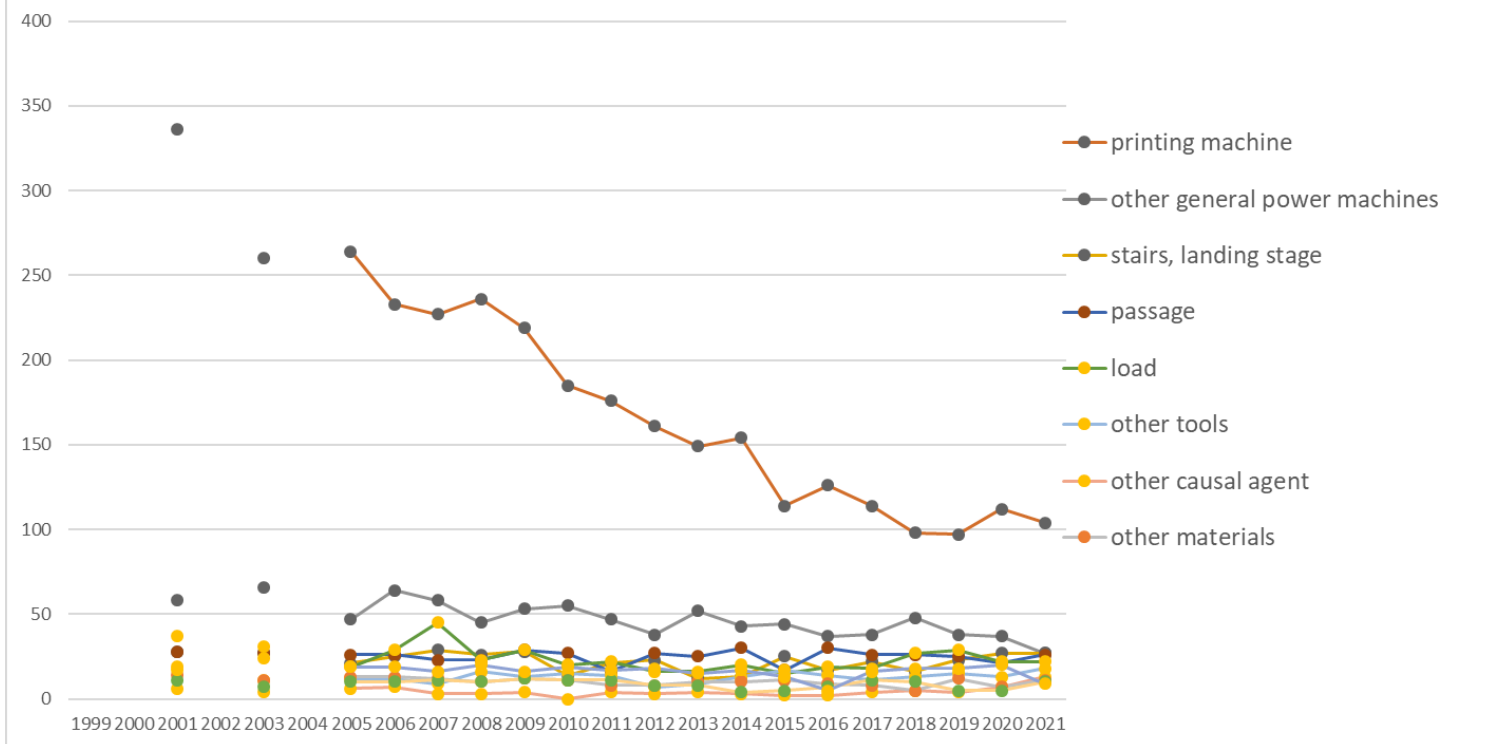
Transition of fatal and non-fatal accidents in large causal agents in code no. 010701 printing service (1999-2021)

Transition of fatal and non-fatal accidents in top 10 middle causal agents  
(1999-2021)



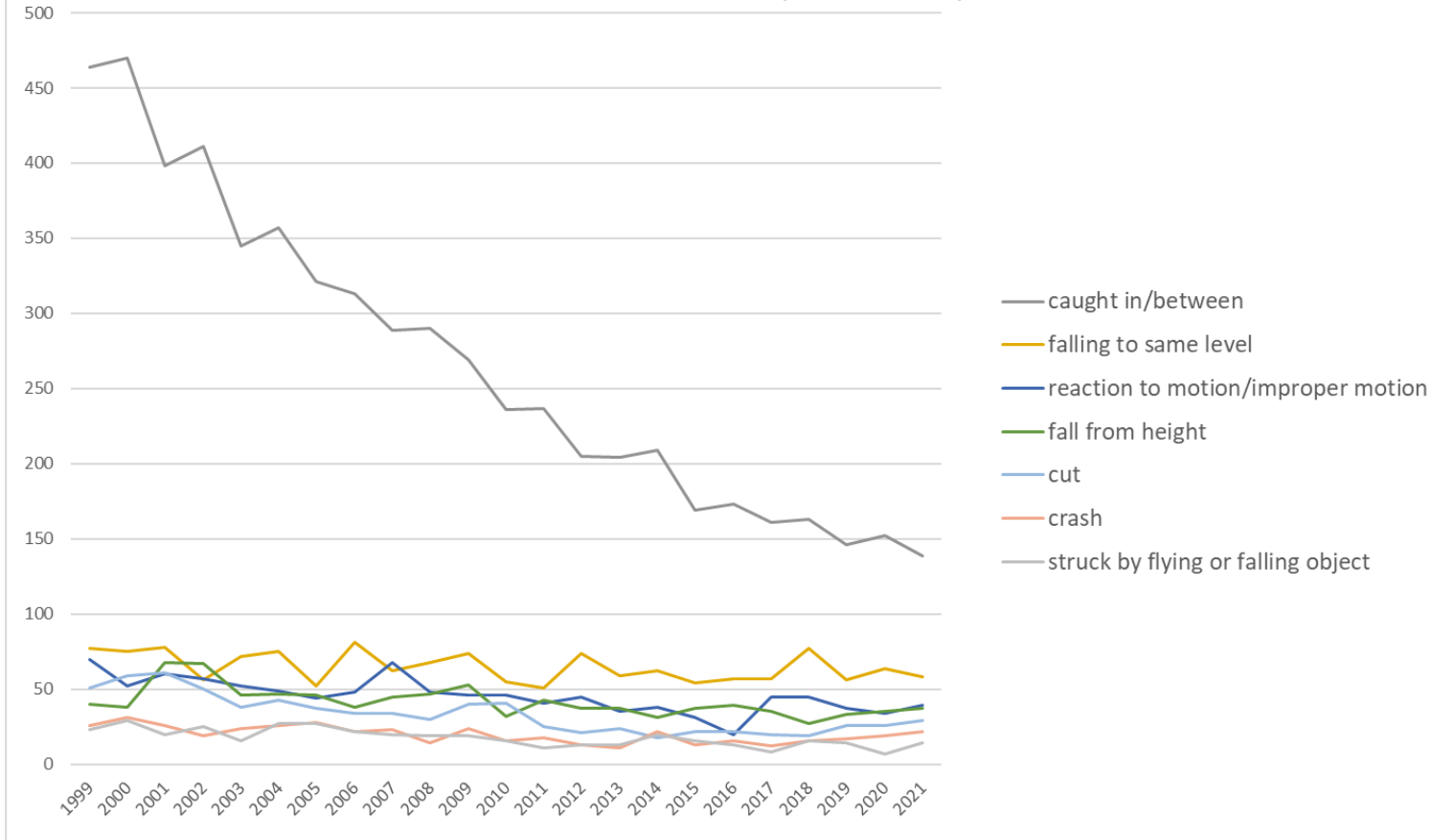
Transition of fatal and non-fatal accidents in middle causal agents in code no. 010701 printing service (1999-2021)

### Transition of fatal and non-fatal accidents in top 10 small causal agents (1999-2021)



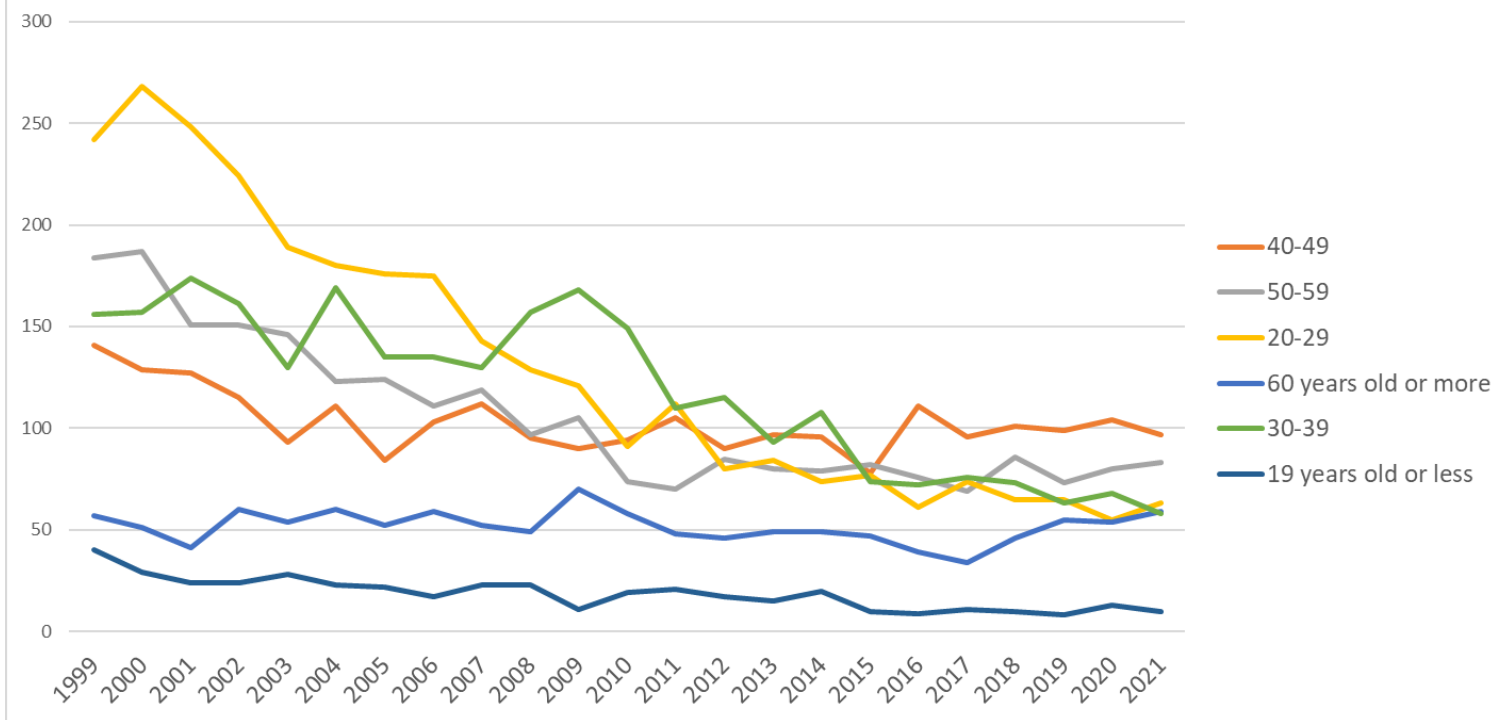
Transition of fatal and non-fatal accidents in small causal agents in code no. 010701 printing service (1999-2021)

Transition of fatal and non-fatal accidents in top 7 type of accidents  
(1999-2021)



Transition of fatal and non-fatal accidents in type of accidents in code no. 010701 printing service (1999-2021)

### Transition of fatal and non-fatal accidents in workers ages (1999-2021)



Transition of fatal and non-fatal accidents in workers ages in code no. 010701 printing service (1999-2021)































	falling object																										or falling object
90	others	3	1		1	2	2	2	2			2	1	2	2	1	1	4	1	5	1	3	9	10	55	others	
05	collapse	7	14	7	7	5	8	7	9	7	11	8	7	6	5	8	4	6	10	2	5	11	7	9	170	collapse	
17	traffic accident (public road)	26	24	13	17	15	13	12	11	10	6	12	9	12	4	15	3	5	4	2	5	3	5	6	232	traffic accident (public road)	
06	crashed by	25	18	19	11	18	9	10	15	13	12	12	13	10	12	6	13	8	9	9	2	10	7	5	266	crashed by	
12	contact to harmful substance	1		5	4	1	3	2	1	1	1	2	3	3	1	1	1	2		2	1	1	5	2	43	contact to harmful substance	
11	contact to high/low- temperature	5	7	3	5	2	5	1	2	3	2	2	9	3		1	1		2	2	4	4	3		66	contact to high/low- temperature	
99	unclassifiable	1	1	1	2	1	1	1	1	2	1				1										14	unclassifiable	
13	electric shock		1	2			1	1	1			1	1			1									9	electric shock	
16	fire		1	2		1		1								2	1	1							9	fire	
09	injury to the sole of the foot			2	1	1											1		2				1		8	injury to the sole of the foot	
18	traffic accident (others)	1			1							1	1										1		5	traffic accident (others)	
10	drown							1							3										4	drown	
15	burst				1					2							1								4	burst	
14	explosion					1									1										2	explosion	
	total	820	821	765	735	640	666	593	600	579	550	565	485	466	433	418	426	368	368	360	381	363	374	370	12,146	total	

code	Age	1999	2000	2001	2002	2003	2004	2005	2006	2007	2008	2009	2010	2011	2012	2013	2014	2015	2016	2017	2018	2019	2020	2021	total	Age
4	40-49	141	129	127	115	93	111	84	103	112	95	90	94	105	90	97	96	78	111	96	101	99	104	97	2,368	40-49
5	50-59	184	187	151	151	146	123	124	111	119	97	105	74	70	85	80	79	82	76	69	86	73	80	83	2,435	50-59
2	20-29	242	268	248	224	189	180	176	175	143	129	121	91	112	80	84	74	77	61	74	65	65	55	63	2,996	20-29
6	60 years old or more	57	51	41	60	54	60	52	59	52	49	70	58	48	46	49	49	47	39	34	46	55	54	59	1,189	60 years old or more
3	30-39	156	157	174	161	130	169	135	135	130	157	168	149	110	115	93	108	74	72	76	73	63	68	58	2,731	30-39
1	19 years old or less	40	29	24	24	28	23	22	17	23	23	11	19	21	17	15	20	10	9	11	10	8	13	10	427	19 years old or less
	total	820	821	765	735	640	666	593	600	579	550	565	485	466	433	418	426	368	368	360	381	363	374	370	12,146	total

Transition of fatal and non-fatal accidents in workers scales in code no. 010701 printing service (1999-2021)

code	Workers scale	1999	2000	2001	2002	2003	2004	2005	2006	2007	2008	2009	2010	2011	2012	2013	2014	2015	2016	2017	2018	2019	2020	2021	total	Workers scale
4	50-99	111	152	123	116	106	134	108	116	111	100	88	90	88	92	79	84	72	77	73	86	72	84	85	2,247	50-99
5	100-299	145	108	129	116	113	115	120	100	103	95	118	75	82	82	79	89	82	79	91	84	74	65	85	2,229	100-299
2	10-29	215	220	200	199	170	158	144	131	134	131	138	115	110	88	91	91	68	74	65	75	80	73	66	2,836	10-29
3	30-49	121	134	108	102	89	98	89	111	86	97	99	93	85	82	70	72	53	58	63	58	69	74	59	1,970	30-49
6	300 workers or more	73	78	70	60	55	53	43	51	49	48	45	43	45	41	38	38	41	33	33	42	41	44	41	1,105	300 workers or more
1	9 workers or less	155	129	135	142	107	108	89	91	96	79	77	69	56	48	61	52	52	47	35	36	27	34	34	1,759	9 workers or less
	total	820	821	765	735	640	666	593	600	579	550	565	485	466	433	418	426	368	368	360	381	363	374	370	12,146	total

Transition of fatal and non-fatal accidents in months in code no. 010701 printing service (1999-2021)

code	Month	1999	2000	2001	2002	2003	2004	2005	2006	2007	2008	2009	2010	2011	2012	2013	2014	2015	2016	2017	2018	2019	2020	2021	total	Month

8	August	64	86	69	61	44	52	56	53	38	44	44	40	35	38	28	23	25	31	24	39	29	40	40	1,003	August
1	January	68	52	50	55	48	48	49	45	42	40	46	37	41	32	30	29	35	33	28	35	27	32	37	939	January
3	March	85	75	54	63	55	62	46	46	60	46	48	50	57	46	32	50	35	19	36	42	36	35	36	1,114	March
4	April	68	62	74	61	61	53	52	48	58	62	45	44	40	36	25	39	36	26	30	28	31	26	34	1,039	April
9	September	70	59	64	55	56	60	48	50	49	41	41	47	42	34	29	38	38	23	32	29	26	21	34	986	September
2	February	68	83	57	61	62	50	48	47	45	34	42	49	31	35	39	27	34	39	30	35	30	24	32	1,002	February
12	December	58	57	61	44	48	49	45	46	36	43	46	23	34	38	24	36	23	36	27	30	21	42	29	896	December
6	June	70	67	70	63	67	62	57	56	39	56	51	39	36	38	41	36	33	29	38	25	33	38	28	1,072	June
10	October	83	78	61	76	43	63	60	51	46	48	58	37	30	34	60	39	27	33	30	26	35	33	27	1,078	October
7	July	55	73	68	73	68	59	47	54	62	53	59	37	41	36	45	35	24	36	39	27	30	24	26	1,071	July
11	November	68	66	72	49	35	53	43	45	53	40	45	43	39	34	35	38	30	32	28	34	32	29	24	967	November
5	May	63	63	65	74	53	55	42	59	51	43	40	39	40	32	30	36	28	31	18	31	33	30	23	979	May
	total	820	821	765	735	640	666	593	600	579	550	565	485	466	433	418	426	368	368	360	381	363	374	370	12,146	total

Transition of fatal and non-fatal accidents in prefectures in code no. 010701 printing service (1999-2021)

code	Prefecture	1999	2000	2001	2002	2003	2004	2005	2006	2007	2008	2009	2010	2011	2012	2013	2014	2015	2016	2017	2018	2019	2020	2021	total	Prefecture
27	Osaka	109	106	108		91		75	81	73	76	67	72	53	52	41	45	31	35	50	45	42	45	44	1,341	Osaka
11	Saitama	82	73	72		69		66	54	73	58	69	57	42	56	40	41	44	42	40	47	33	37	42	1,137	Saitama
13	Tokyo	138	118	105		96		70	79	72	59	54	53	58	39	48	46	28	39	35	29	39	39	31	1,275	Tokyo
23	Aichi	46	59	45		42		40	40	30	28	31	26	30	30	30	33	16	19	17	20	29	23	21	655	Aichi
14	Kanagawa	28	32	22		23		16	22	12	18	17	15	14	14	14	12	10	9	8	7	14	4	21	332	Kanagawa
26	Kyoto	19	22	26		11		21	25	27	19	18	10	20	16	13	25	18	14	17	9	12	10	18	370	Kyoto
28	Hyogo	22	24	33		25		17	31	23	25	14	18	12	6	11	9	13	14	20	10	13	12	16	368	Hyogo
22	Shizuoka	28	29	26		16		15	26	24	19	14	17	22	18	14	17	18	11	10	13	14	9	12	372	Shizuoka



42	Nagasaki	5	3	6		5		3	9	1		3	1	1	4	2	6		3	5		3	1	3	64	Nagasaki
2	Aomori	3	2	6		3		3	3	3	3	4	2	4	2	5		1				2	2	3	51	Aomori
9	Tochigi	13	8	5		8		4	4	8	5	5	5	4	8	3	4	5	3	3	5	3	4	2	109	Tochigi
6	Yamagata	5	8	8		4		4	5	1	5	4	6	1	3	5	3	3	2	1	4	3	4	2	81	Yamagata
30	Wakayama	2	3	2		5		5	1	5	8	3	3	5	3	2	1	2	5		2	1	2	2	62	Wakayama
36	Tokushima	2	8			4		7	1	2	4	6	3	3	2	2	2	1	2	3		3	4	2	61	Tokushima
18	Fukui	3	3	3		4		2	5	3	4	4	3	2	2	2	4	1	4	1	4	2	2	2	60	Fukui
41	Saga	3	3	1		2		4		1	1		1	2	1	3	3	3	1	1	2	1	5	2	40	Saga
45	Miyazaki	3	3	2		6		1		3	1	4	4	4	3	4	1	2	5	2	1		6	1	56	Miyazaki
46	Kagoshima	4	5	4				2	1	2	5	3	1		2	3	1	2	2		4	2	2	1	46	Kagoshima
5	Akita	3	1	2		2		4	4	2	3	2	2	3			3	1	3	1	1	3		1	41	Akita
44	Oita	4	4	5		3		4	5	3	3	3	4	2	2	2	3	1	2	4	3		2		59	Oita
47	Okinawa	5	2	5		9		4	1	7	2		5	2	1	4	1	3	1	1	1		1		55	Okinawa
39	Kochi	6	2	4		3		3	2	4	2	2	2	2	1	4	3	1		1	1	3	1		47	Kochi
31	Tottori	4	3			2		2	2	3		2	3	1	1			1	1			2			27	Tottori
32	Shimane	1	3	3						2	1	2	2	1		2		1			1	2			21	Shimane
	total	820	821	765		640		593	600	579	550	565	485	466	433	418	426	368	368	360	381	363	374	370	10,745	total

Data source : <https://anzeninfo.mhlw.go.jp/user/anzen/tok/anst00.htm>

Return to [https://www.jisha.or.jp/english/statistics/202211\\_23.html](https://www.jisha.or.jp/english/statistics/202211_23.html)