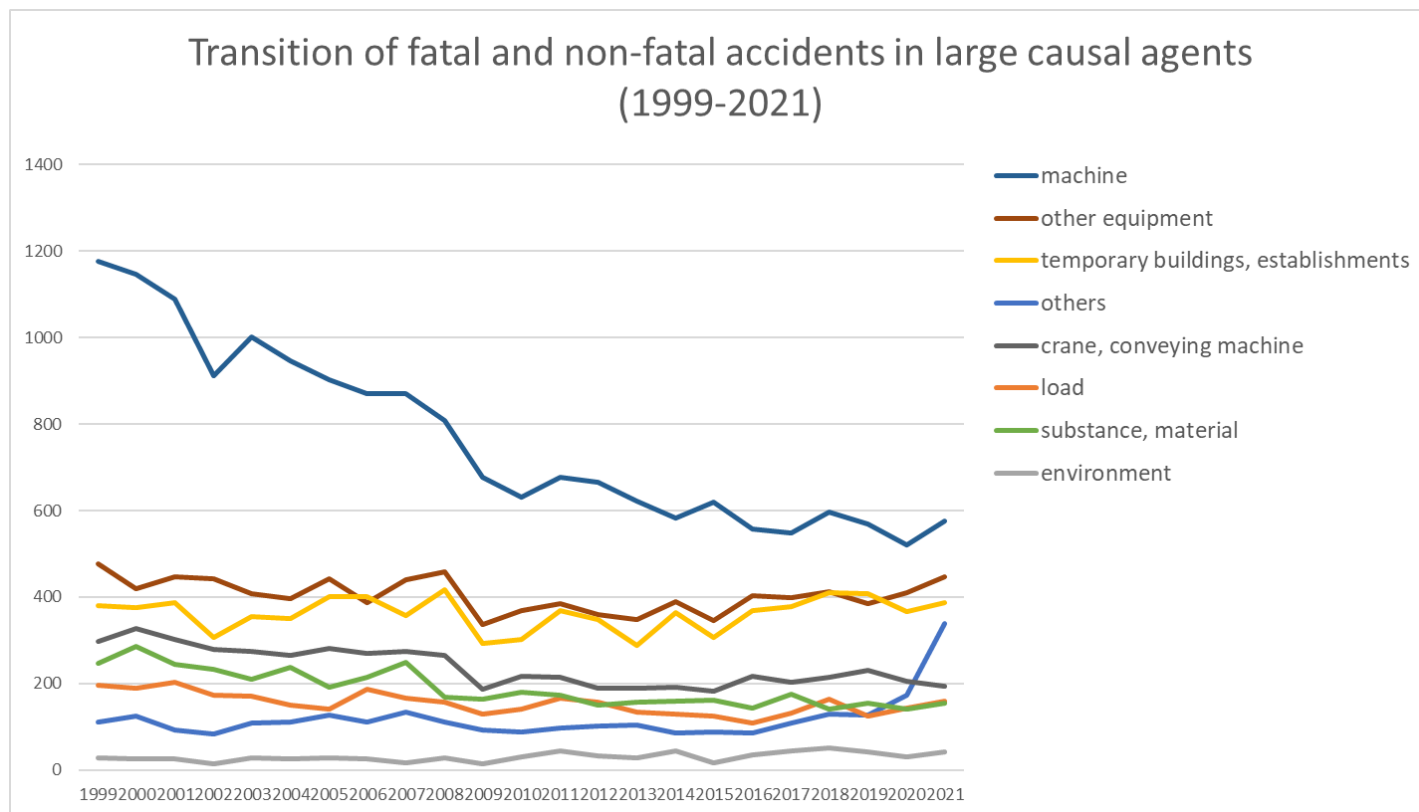
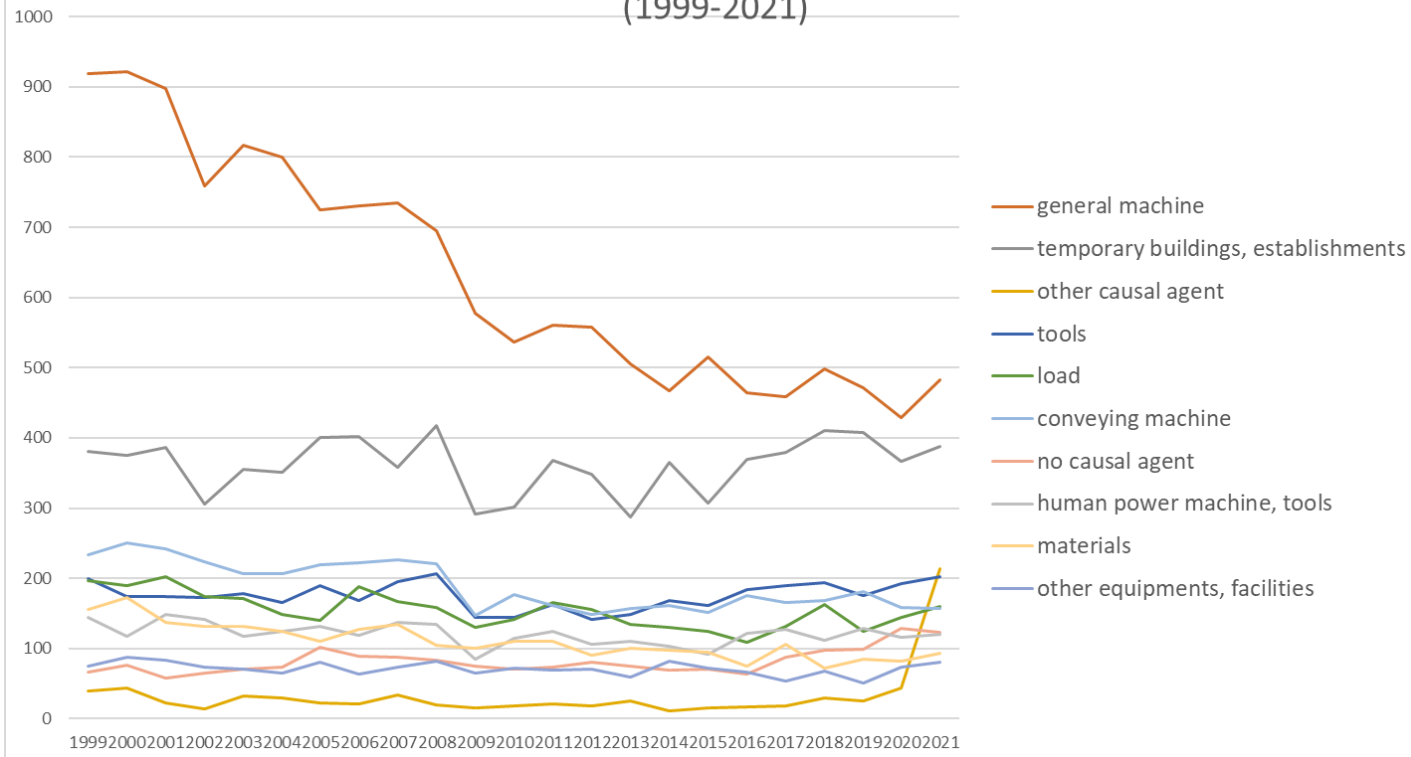


Transition of fatal and non-fatal accidents in each element like as causal agents, type of accidents, etc. in code no. 0108 chemical products (1999-2021)



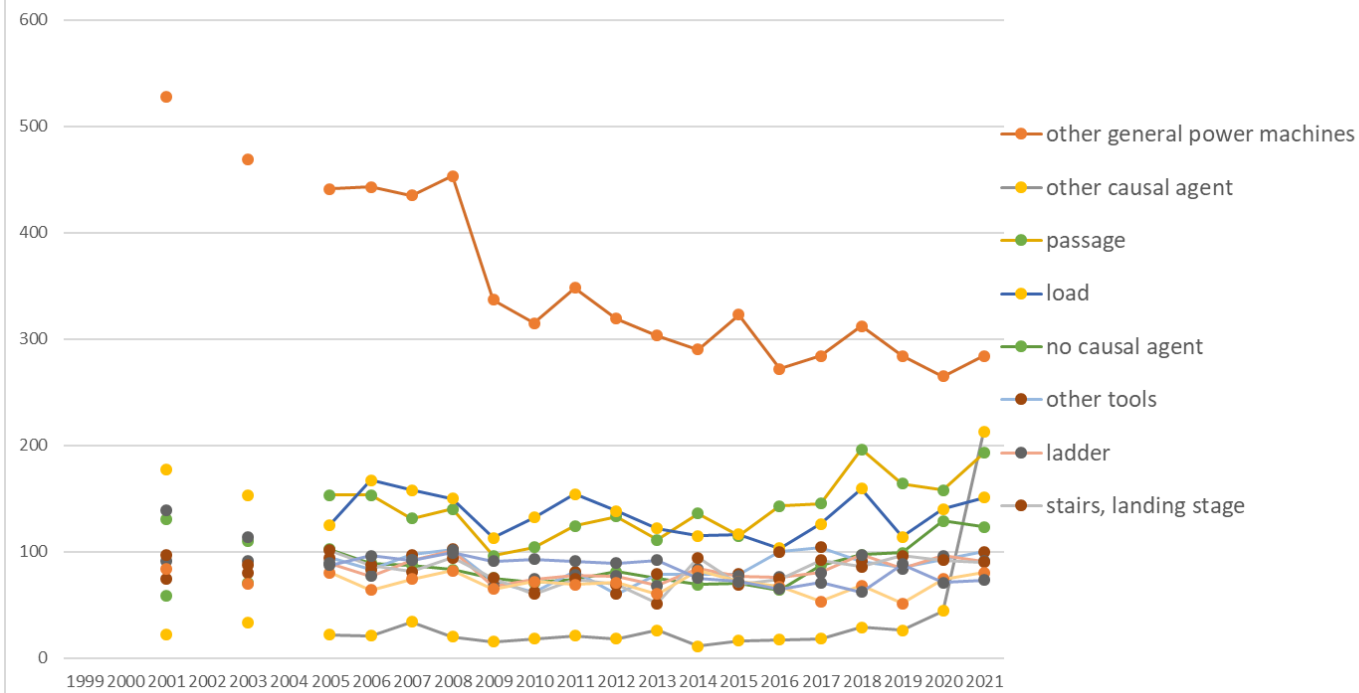
Transition of fatal and non-fatal accidents in large causal agents in code no. 0108 chemical products (1999-2021)

Transition of fatal and non-fatal accidents in top 10 middle causal agents (1999-2021)



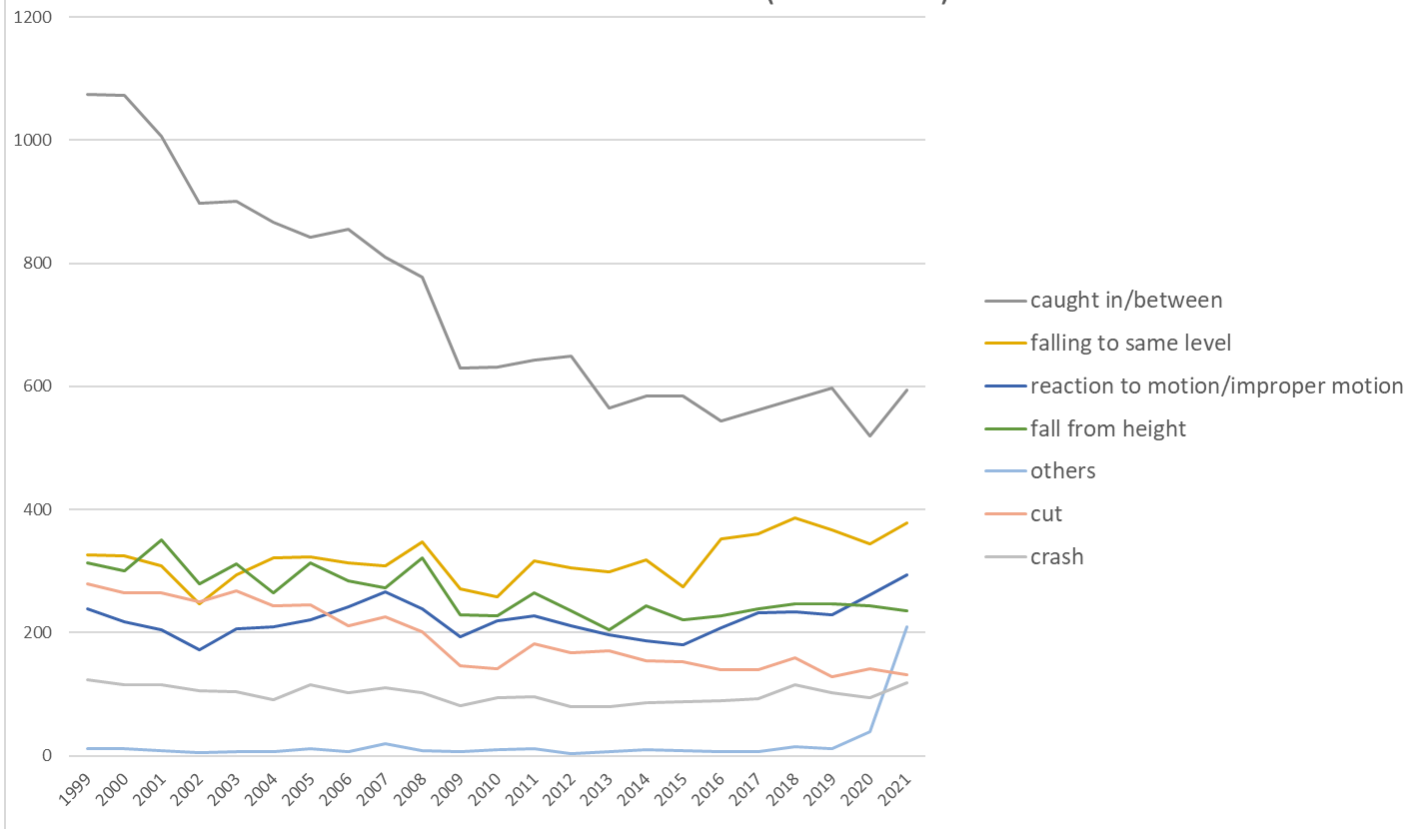
Transition of fatal and non-fatal accidents in middle causal agents in code no. 0108 chemical products (1999-2021)

Transition of fatal and non-fatal accidents in top 10 small causal agents
(1999-2021)



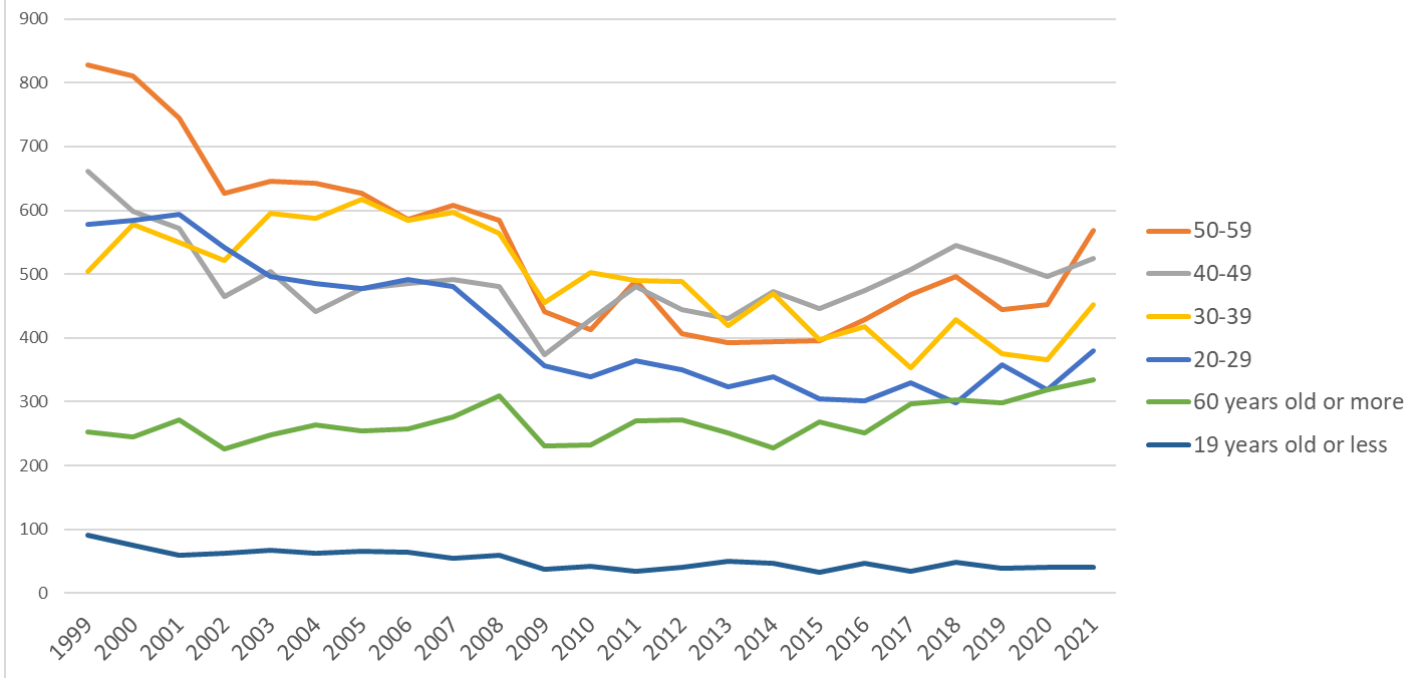
Transition of fatal and non-fatal accidents in small causal agents in code no. 0108 chemical products (1999-2021)

Transition of fatal and non-fatal accidents in top 7 type of accidents
(1999-2021)



Transition of fatal and non-fatal accidents in type of accidents in code no. 0108 chemical products (1999-2021)

Transition of fatal and non-fatal accidents in workers ages (1999-2021)



Transition of fatal and non-fatal accidents in workers ages in code no. 0108 chemical products (1999-2021)

6	300 workers or more	201	248	225	175	170	194	210	211	224	247	179	192	206	237	193	211	174	199	197	260	237	259	285	4,934	300 workers or more
1	9 workers or less	543	520	510	459	508	489	450	441	379	307	280	251	254	231	222	242	210	209	210	214	175	165	191	7,460	9 workers or less
	total	2,916	2,891	2,791	2,443	2,558	2,482	2,517	2,469	2,508	2,417	1,895	1,959	2,130	2,001	1,869	1,949	1,844	1,919	1,990	2,120	2,039	1,993	2,301	52,001	total

Transition of fatal and non-fatal accidents in months in code no. 0108 chemical products (1999-2021)

code	Month	1999	2000	2001	2002	2003	2004	2005	2006	2007	2008	2009	2010	2011	2012	2013	2014	2015	2016	2017	2018	2019	2020	2021	total	Month
9	September	254	262	197	222	242	219	220	190	198	190	139	169	169	160	149	162	139	154	158	166	190	183	242	4,374	September
8	August	260	213	211	196	220	197	220	200	209	209	156	166	170	170	153	150	145	181	170	176	178	178	215	4,343	August
6	June	274	269	241	181	204	256	239	206	202	204	167	183	180	173	148	179	184	152	160	178	182	172	204	4,538	June
2	February	264	256	276	213	219	195	205	235	217	225	146	155	182	178	169	182	161	164	181	188	189	181	202	4,583	February
4	April	226	214	248	220	223	212	198	194	220	214	149	149	172	174	156	148	153	165	132	163	164	152	189	4,235	April
3	March	263	258	251	210	198	206	224	223	239	223	156	180	182	167	136	164	149	141	189	185	167	166	188	4,465	March
7	July	231	259	274	238	229	236	232	224	217	230	192	176	195	166	193	161	180	152	171	182	194	159	186	4,677	July
10	October	249	236	255	212	221	218	202	184	215	204	156	167	193	165	159	181	168	182	171	176	161	193	185	4,453	October
1	January	239	259	215	189	207	200	202	214	189	230	182	187	175	158	147	171	139	179	187	204	155	170	183	4,381	January
5	May	221	233	223	186	225	185	185	212	212	184	140	150	166	181	155	152	136	148	147	174	150	138	177	4,080	May
11	November	219	242	211	204	198	182	190	201	211	167	156	148	164	171	168	159	156	162	159	193	169	155	170	4,155	November
12	December	216	190	189	172	172	176	200	186	179	137	156	129	182	138	136	140	134	139	165	135	140	146	160	3,717	December
	total	2,916	2,891	2,791	2,443	2,558	2,482	2,517	2,469	2,508	2,417	1,895	1,959	2,130	2,001	1,869	1,949	1,844	1,919	1,990	2,120	2,039	1,993	2,301	52,001	total

Transition of fatal and non-fatal accidents in prefectures in code no. 0108 chemical products (1999-2021)

code	Prefecture	1999	2000	2001	2002	2003	2004	2005	2006	2007	2008	2009	2010	2011	2012	2013	2014	2015	2016	2017	2018	2019	2020	2021	total	Prefecture
27	Osaka	326	305	284		252		233	279	239	206	204	190	179	183	169	188	157	164	175	200	157	155	168	4,413	Osaka
23	Aichi	231	233	189		207		179	182	144	167	128	136	154	156	140	140	142	127	139	163	153	154	161	3,425	Aichi

11	Saitama	186	183	167		191		152	162	164	148	130	151	121	133	117	128	129	122	133	119	126	114	132	3,008	Saitama
24	Mie	85	86	93		88		80	88	93	100	55	66	62	62	77	80	56	62	66	64	57	52	126	1,598	Mie
22	Shizuoka	145	163	155		127		120	123	128	130	98	111	123	103	87	93	91	118	125	118	108	99	119	2,484	Shizuoka
28	Hyogo	226	211	163		194		163	146	132	149	90	107	135	117	109	114	113	101	114	123	126	114	118	2,865	Hyogo
14	Kanagawa	116	104	118		91		113	87	81	86	69	81	84	78	69	79	59	79	67	74	70	79	115	1,799	Kanagawa
12	Chiba	96	98	107		61		95	89	102	110	91	102	66	81	88	73	75	76	69	85	83	89	88	1,824	Chiba
10	Gunma	69	83	73		78		75	67	86	69	48	61	56	54	57	63	58	75	49	65	61	76	86	1,409	Gunma
8	Ibaraki	94	101	113		79		116	103	97	96	84	73	99	70	60	68	84	70	86	85	88	103	83	1,852	Ibaraki
21	Gifu	74	106	93		73		86	85	90	71	43	75	71	55	64	59	54	59	50	66	64	67	80	1,485	Gifu
9	Tochigi	74	75	75		73		70	72	65	67	59	48	65	79	58	46	48	56	56	63	73	45	76	1,343	Tochigi
40	Fukuoka	97	95	85		82		70	67	82	65	73	52	71	56	50	53	64	58	57	68	52	62	70	1,429	Fukuoka
29	Nara	78	72	92		71		79	81	73	68	63	56	62	67	68	58	50	51	74	62	61	52	59	1,397	Nara
7	Fukushima	47	33	48		38		46	50	51	38	41	41	37	36	33	31	25	32	44	47	40	40	57	855	Fukushima
1	Hokkaido	54	44	53		31		30	31	43	35	38	35	32	37	38	36	22	40	32	30	29	32	56	778	Hokkaido
25	Shiga	60	65	62		74		58	59	57	77	50	47	49	48	67	64	41	57	68	55	66	56	51	1,231	Shiga
33	Okayama	59	54	50		55		57	49	74	66	39	52	56	49	47	58	50	48	46	59	66	58	50	1,142	Okayama
34	Hiroshima	48	61	73		59		46	40	50	61	46	44	52	56	38	46	38	40	44	40	49	32	46	1,009	Hiroshima
16	Toyama	44	62	35		65		42	55	69	48	54	39	45	49	27	55	46	49	40	47	38	36	42	987	Toyama
15	Niigata	50	38	43		45		45	54	52	46	29	28	36	28	30	39	22	28	20	30	28	35	41	767	Niigata
35	Yamaguchi	55	59	52		45		53	39	48	46	34	29	35	34	33	36	35	35	28	36	43	43	35	853	Yamaguchi
18	Fukui	23	21	42		12		27	22	29	35	15	27	29	29	15	24	24	31	26	28	20	24	33	536	Fukui
13	Tokyo	129	119	118		103		84	67	63	63	44	57	53	37	46	48	32	45	51	37	46	36	31	1,309	Tokyo
30	Wakayama	53	36	42		32		37	40	35	22	18	32	35	20	31	15	21	12	27	31	28	28	27	622	Wakayama
37	Kagawa	44	29	32		25		31	20	29	23	19	19	27	28	20	19	28	19	21	38	26	23	27	547	Kagawa
20	Nagano	41	46	31		20		32	27	29	36	16	22	32	23	15	35	39	42	24	23	25	35	26	619	Nagano

36	Tokushima	32	25	23		23		30	22	29	29	26	15	24	21	16	14	26	18	24	18	25	12	25	477	Tokushima
4	Miyagi	31	24	23		40		36	21	23	29	25	23	29	25	19	18	25	20	19	20	16	28	23	517	Miyagi
26	Kyoto	49	31	27		47		39	42	31	28	16	11	28	23	18	14	30	20	24	29	30	31	21	589	Kyoto
44	Oita	24	18	16		9		6	15	11	13	9	11	11	14	7	16	12	12	15	15	8	9	20	271	Oita
3	Iwate	17	22	18		16		26	19	23	19	9	10	24	19	15	14	13	22	14	16	13	22	19	370	Iwate
38	Ehime	20	23	35		12		18	14	16	16	12	15	20	21	21	11	13	16	17	13	13	15	19	360	Ehime
19	Yamanashi	15	15	11		17		18	20	18	21	29	6	15	10	8	15	13	12	15	12	20	10	18	318	Yamanashi
41	Saga	15	22	15		16		19	15	16	27	12	16	17	11	20	14	13	12	18	33	24	20	17	372	Saga
17	Ishikawa	8	12	15		17		5	12	11	9	7	9	7	11	8	11	6	13	15	13	13	10	17	229	Ishikawa
32	Shimane	9	9	7		9		14	7	13	5	5	5	15	8	7	6	4	11	12	12	10	12	16	196	Shimane
43	Kumamoto	21	27	14		13		20	22	39	17	15	10	16	14	16	21	25	23	18	22	20	14	15	402	Kumamoto
6	Yamagata	9	23	16		24		20	23	15	18	15	17	23	15	22	10	17	17	22	13	12	13	15	359	Yamagata
5	Akita	11	8	13		11		7	5	12	19	7	5	5	10	8	9	7	3	4	12	13	9	13	191	Akita
45	Miyazaki	13	15	23		9		18	15	13	14	9	6	4	10	9	9	13	6	13	8	11	21	12	251	Miyazaki
31	Tottori	8	6	12		4		8	6	9	6	6	3	7	2	3	3	5	3	2	6	6	4	11	120	Tottori
46	Kagoshima	8	11	10		5		9	8	7	4	3	3	4	3	5	5	7	4	5	12	8	11	10	142	Kagoshima
2	Aomori	10	7	9		3		1	3	1	3	3	3	4	5	1	2	3	1	5	2	2	3	9	80	Aomori
39	Kochi	3	4	5		4		2	2	6	3	4	3	4	6	6	5	3	5	6	1	6	7	7	92	Kochi
47	Okinawa	3	5	4		3		2	6	3	4	2	4	3	2	5	2	2	3	5	5	3	1	6	73	Okinawa
42	Nagasaki	6	2	7		5			8	7	5	3	3	4	3	2	2	4	2	6	2	3	2	5	81	Nagasaki
	total	2,916	2,891	2,791		2,558		2,517	2,469	2,508	2,417	1,895	1,959	2,130	2,001	1,869	1,949	1,844	1,919	1,990	2,120	2,039	1,993	2,301	47,076	total

Data source : <https://anzeninfo.mhlw.go.jp/user/anzen/tok/anst00.htm>

Return to https://www.jisha.or.jp/english/statistics/202211_23.html