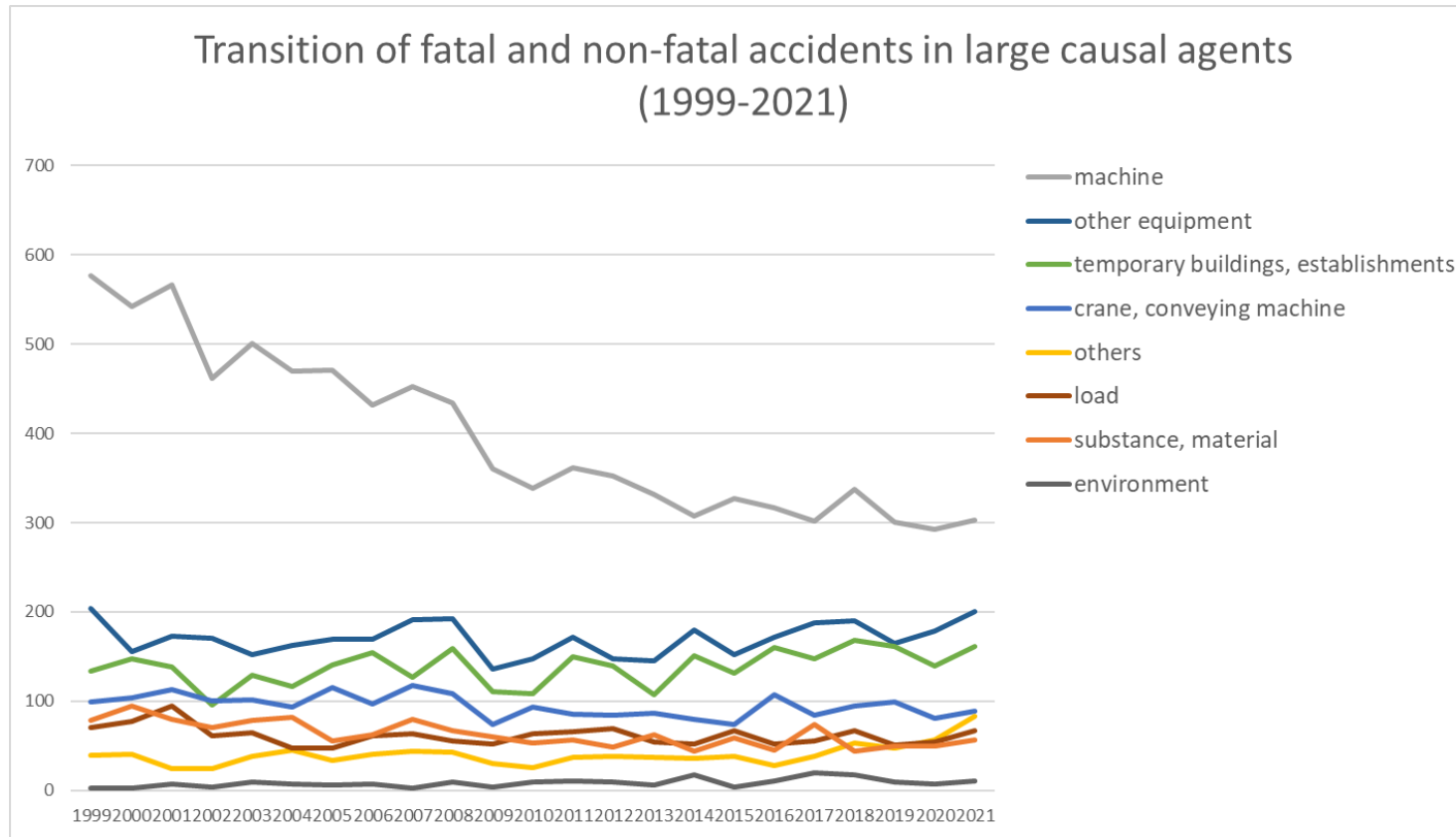
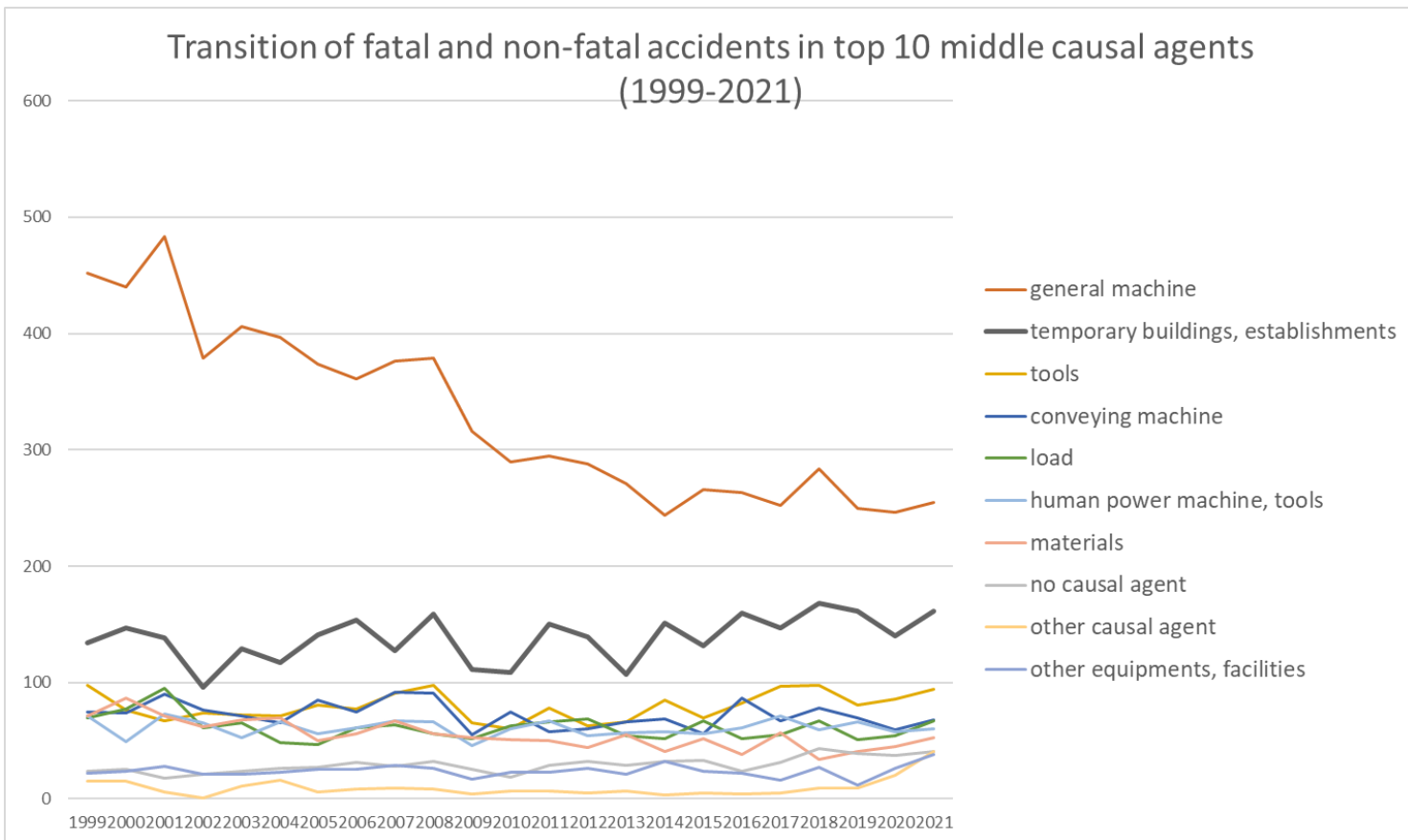


Transition of fatal and non-fatal accidents in each element like as causal agents, type of accidents, etc. in code no. 010805 plastics products (1999-2021)



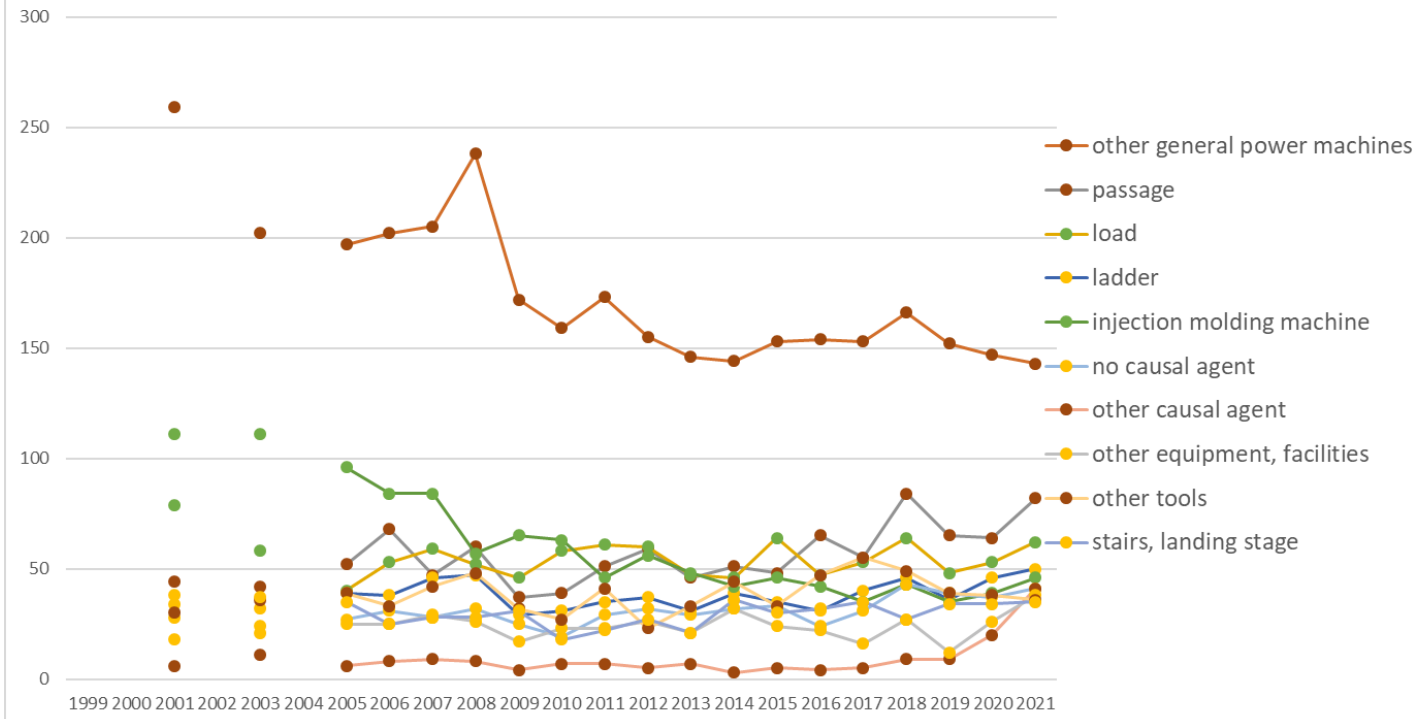
Transition of fatal and non-fatal accidents in large causal agents in code no. 010805 plastics products (1999-2021)

Transition of fatal and non-fatal accidents in top 10 middle causal agents  
(1999-2021)



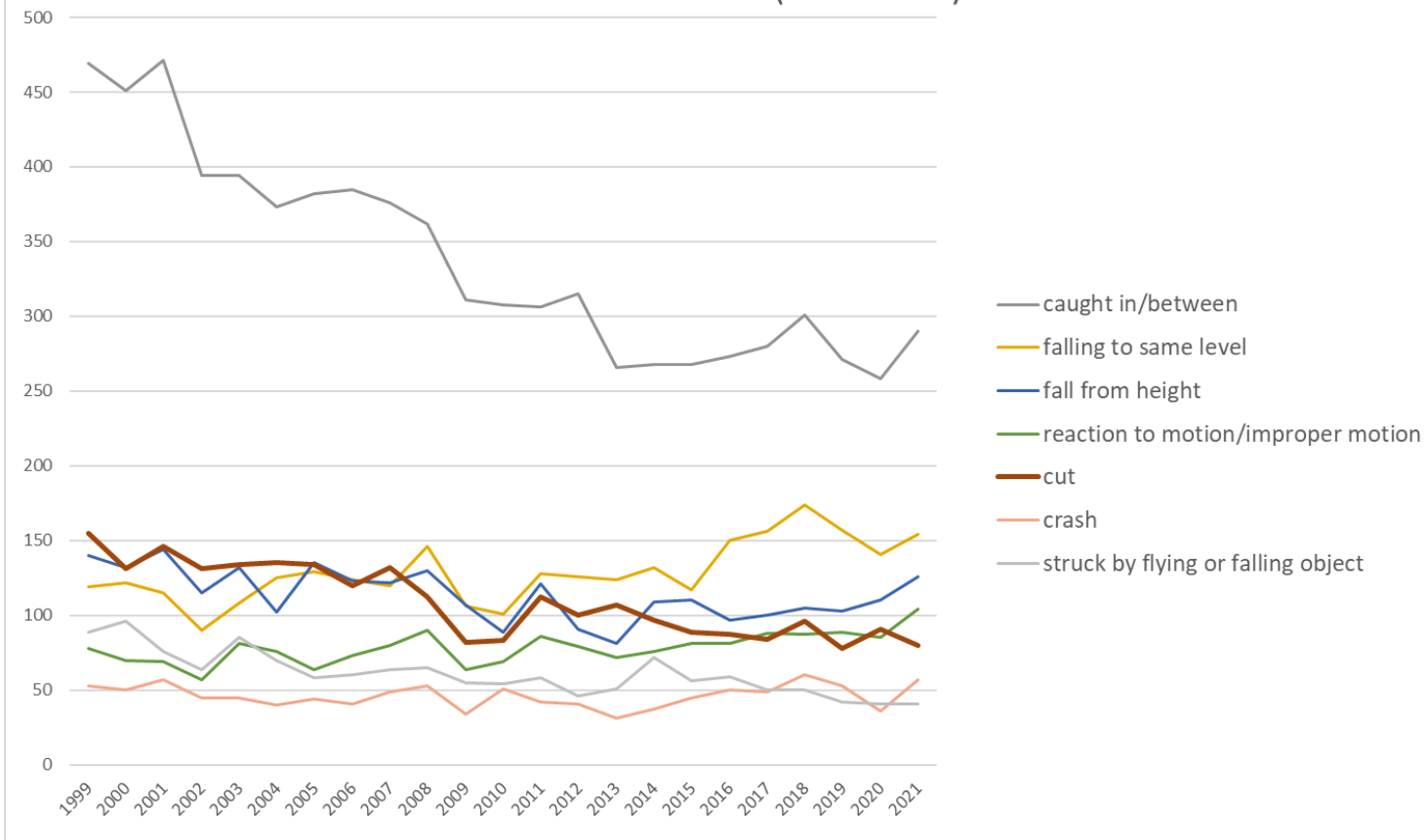
Transition of fatal and non-fatal accidents in middle causal agents in code no. 010805 plastics products (1999-2021)

### Transition of fatal and non-fatal accidents in top 10 small causal agents (1999-2021)



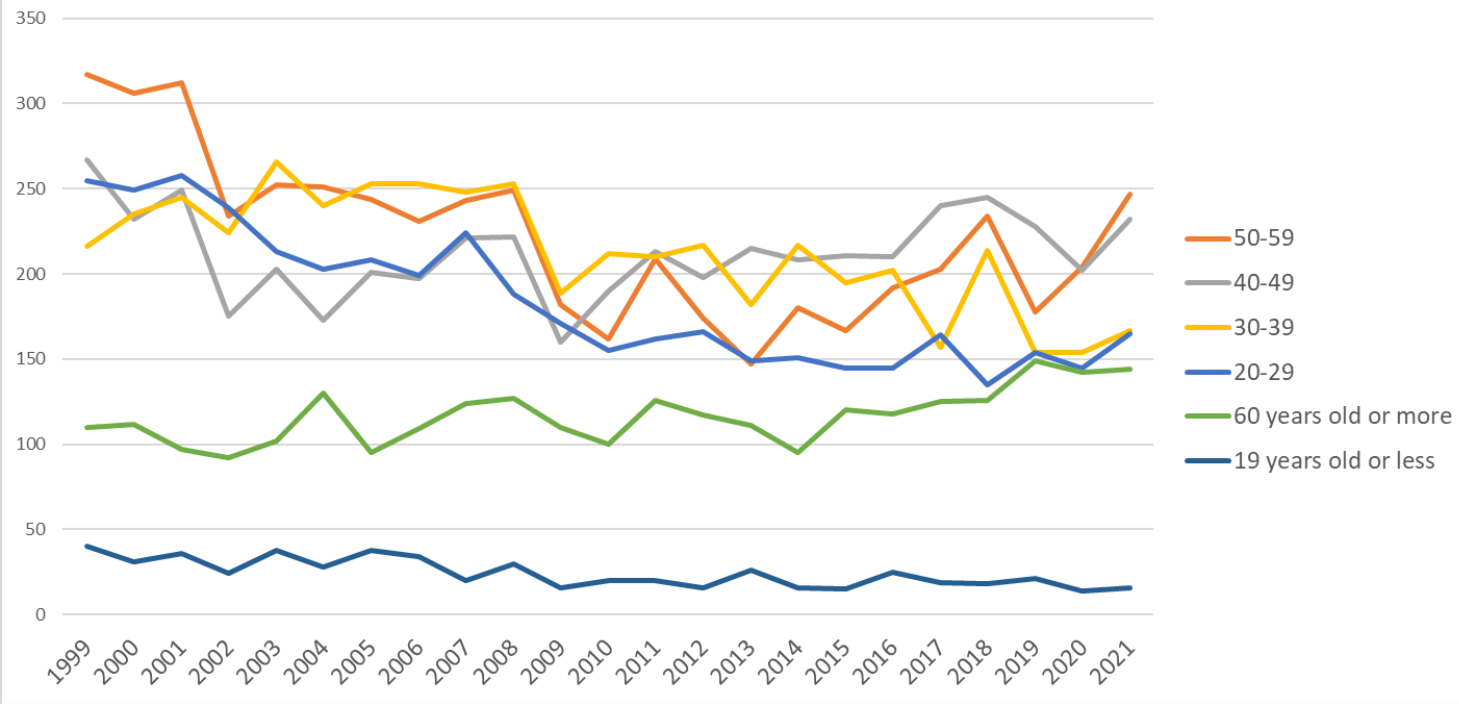
Transition of fatal and non-fatal accidents in small causal agents in code no. 010805 plastics products (1999-2021)

Transition of fatal and non-fatal accidents in top 7 type of accidents  
(1999-2021)



Transition of fatal and non-fatal accidents in type of accidents in code no. 010805 plastics products (1999-2021)

Transition of fatal and non-fatal accidents in workers ages (1999-2021)



Transition of fatal and non-fatal accidents in workers ages in code no. 010805 plastics products (1999-2021)







































38	Ehime	5	5	13				2	7	6	6	4	2	4	8	9	5	2	10	5	5	2	4	5	109	Ehime
31	Tottori	2	2	7		3		6	4	7	5	5	3	5		1	1	4	2	1	4	3	2	5	72	Tottori
2	Aomori	2	1	4					3	1	1		1	1	3		2	3	1	4			1	5	33	Aomori
46	Kagoshima	4	5	4		2		3	4	1	2		1	3	1	1	2	1	1		5	3	7	4	54	Kagoshima
45	Miyazaki	3	4	8		1		3	3	5	6	4	1	3	1	5	3	6	3	2	4	6	4	3	78	Miyazaki
5	Akita	5	2	4		5		1	3	5	3	4	3	1	3		4	3		1	6	7	6	2	68	Akita
42	Nagasaki	5	1	2		2			3		3	1	2	2	1	1	2	2	1	2	1	2	1	2	36	Nagasaki
	total	1,205	1,165	1,197		1,074		1,039	1,023	1,080	1,069	828	839	940	888	830	867	853	892	908	972	884	861	971	20,385	total

Data source : <https://anzeninfo.mhlw.go.jp/user/anzen/tok/anst00.htm>

Return to [https://www.jisha.or.jp/english/statistics/202211\\_23.html](https://www.jisha.or.jp/english/statistics/202211_23.html)