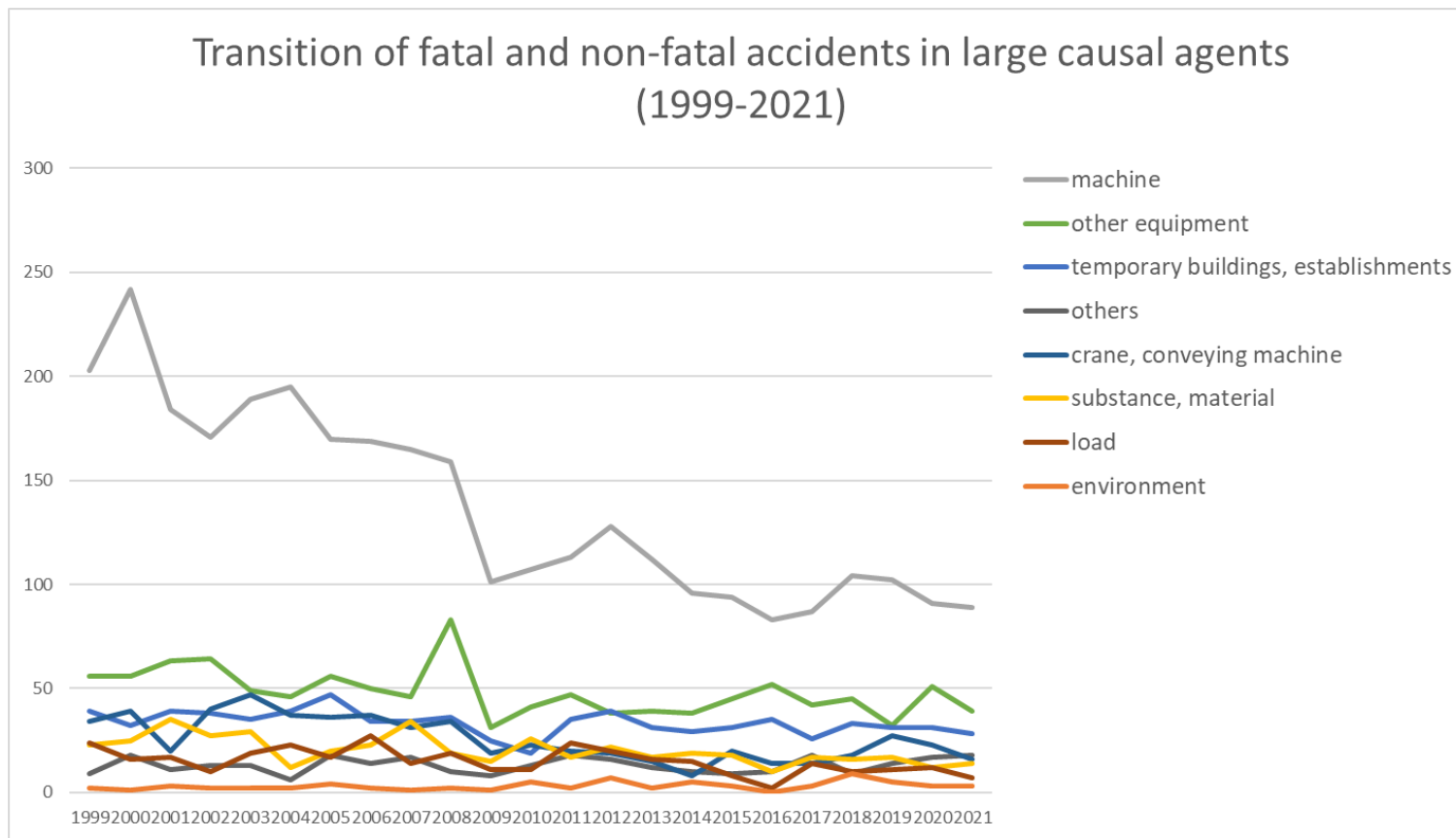
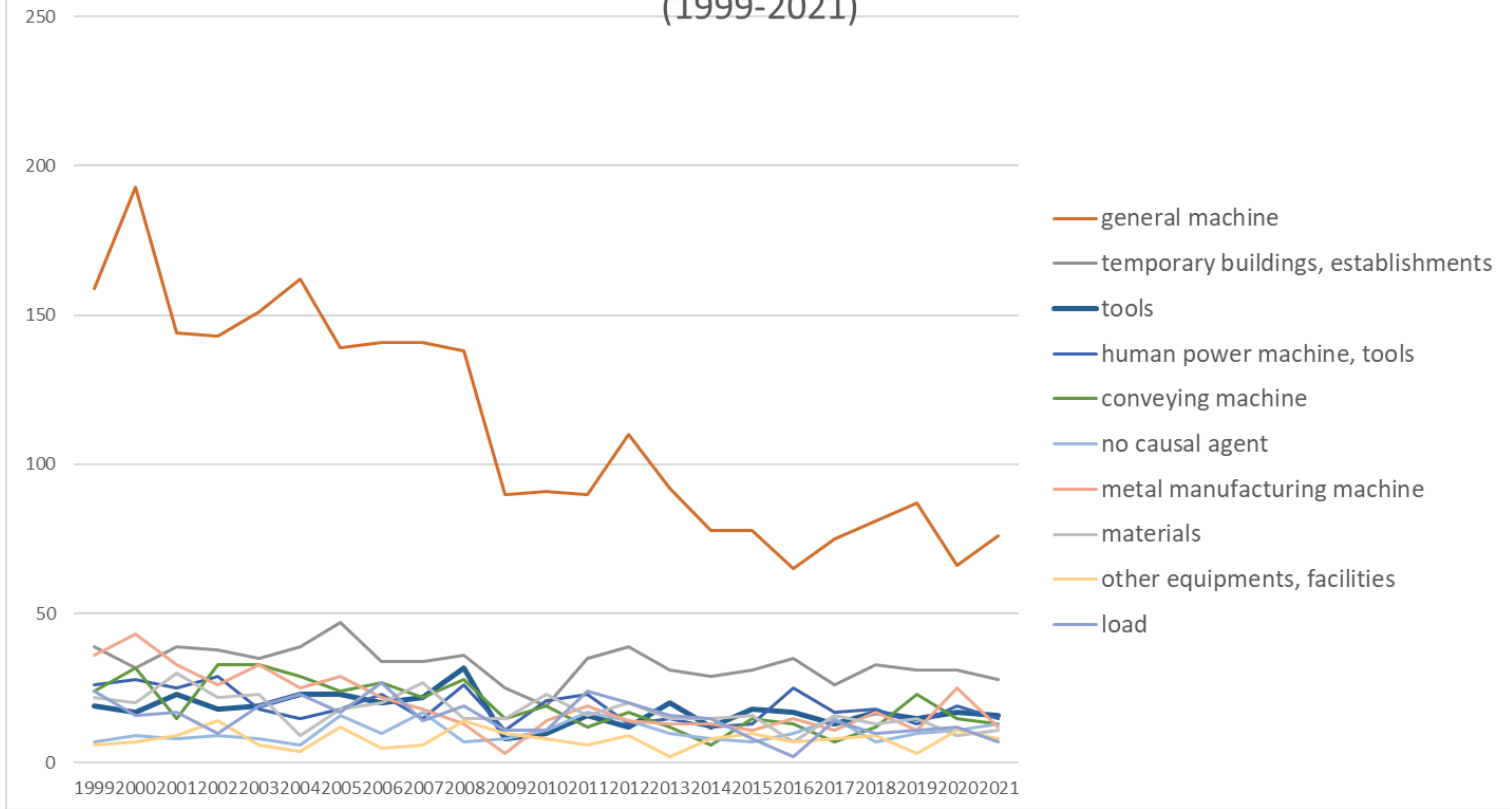


Transition of fatal and non-fatal accidents in each element like as causal agents, type of accidents, etc. in code no. 010806 rubber products (1999-2021)



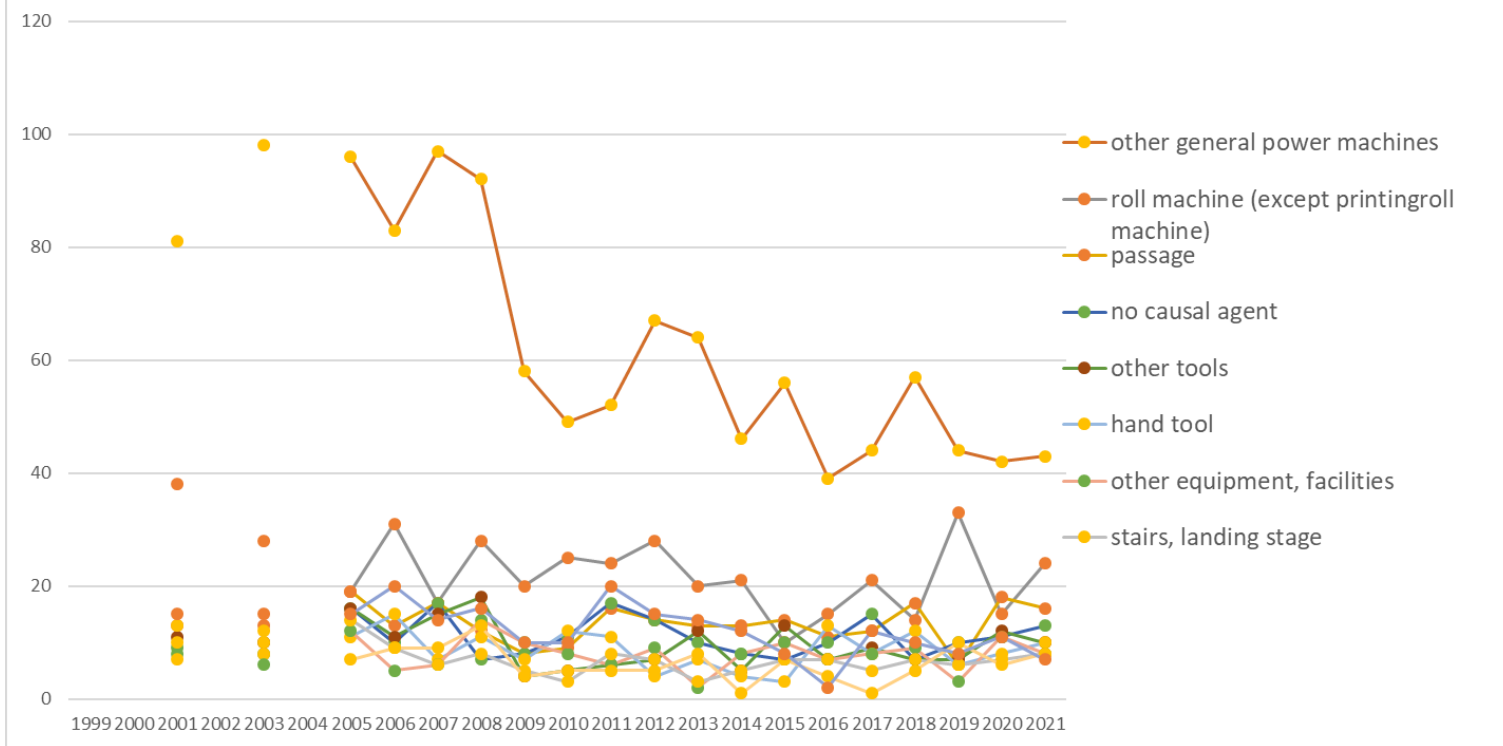
Transition of fatal and non-fatal accidents in large causal agents in code no. 010806 rubber products (1999-2021)

### Transition of fatal and non-fatal accidents in top 10 middle causal agents (1999-2021)



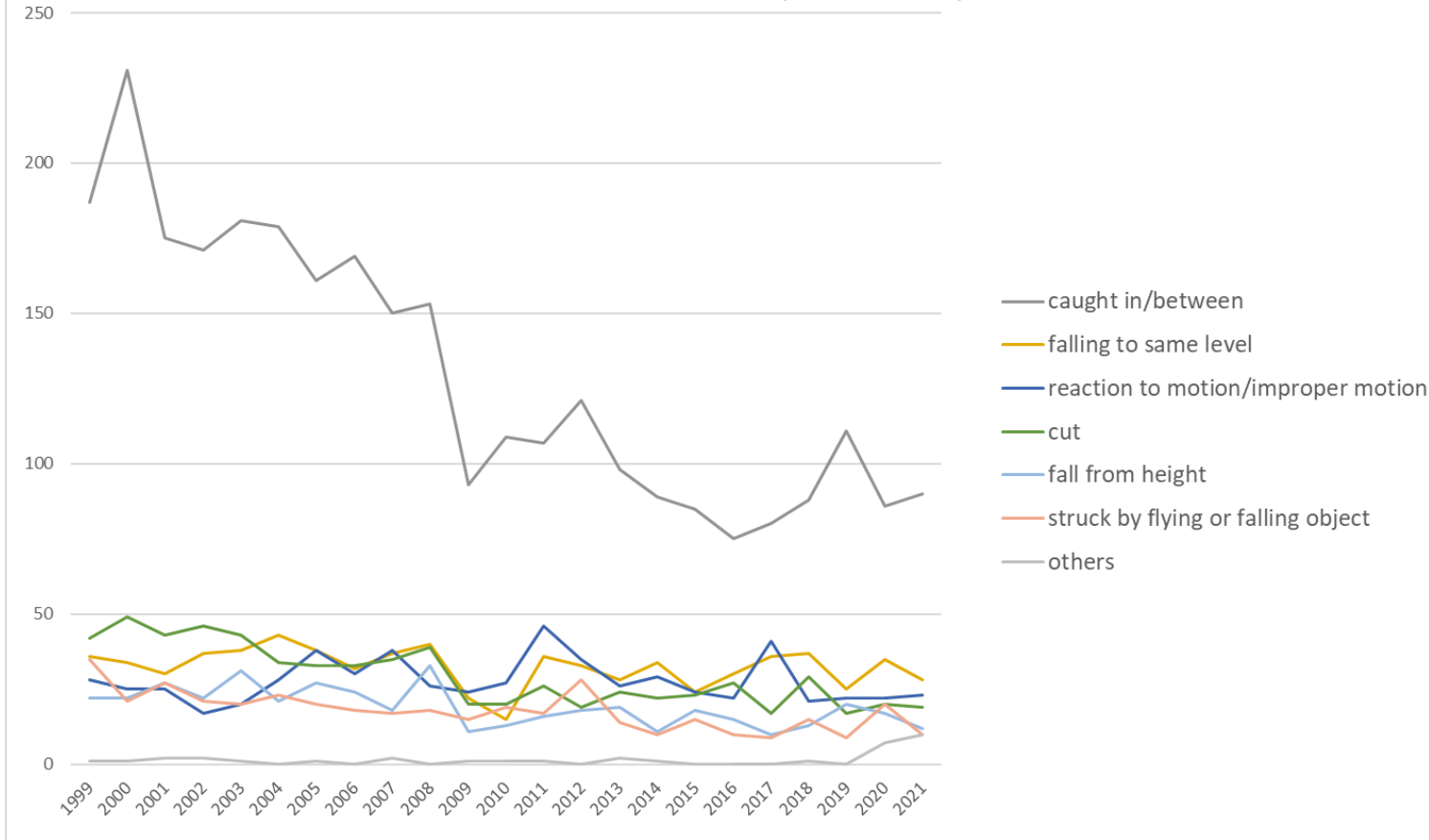
Transition of fatal and non-fatal accidents in middle causal agents in code no. 010806 rubber products (1999-2021)

### Transition of fatal and non-fatal accidents in top 10 small causal agents (1999-2021)



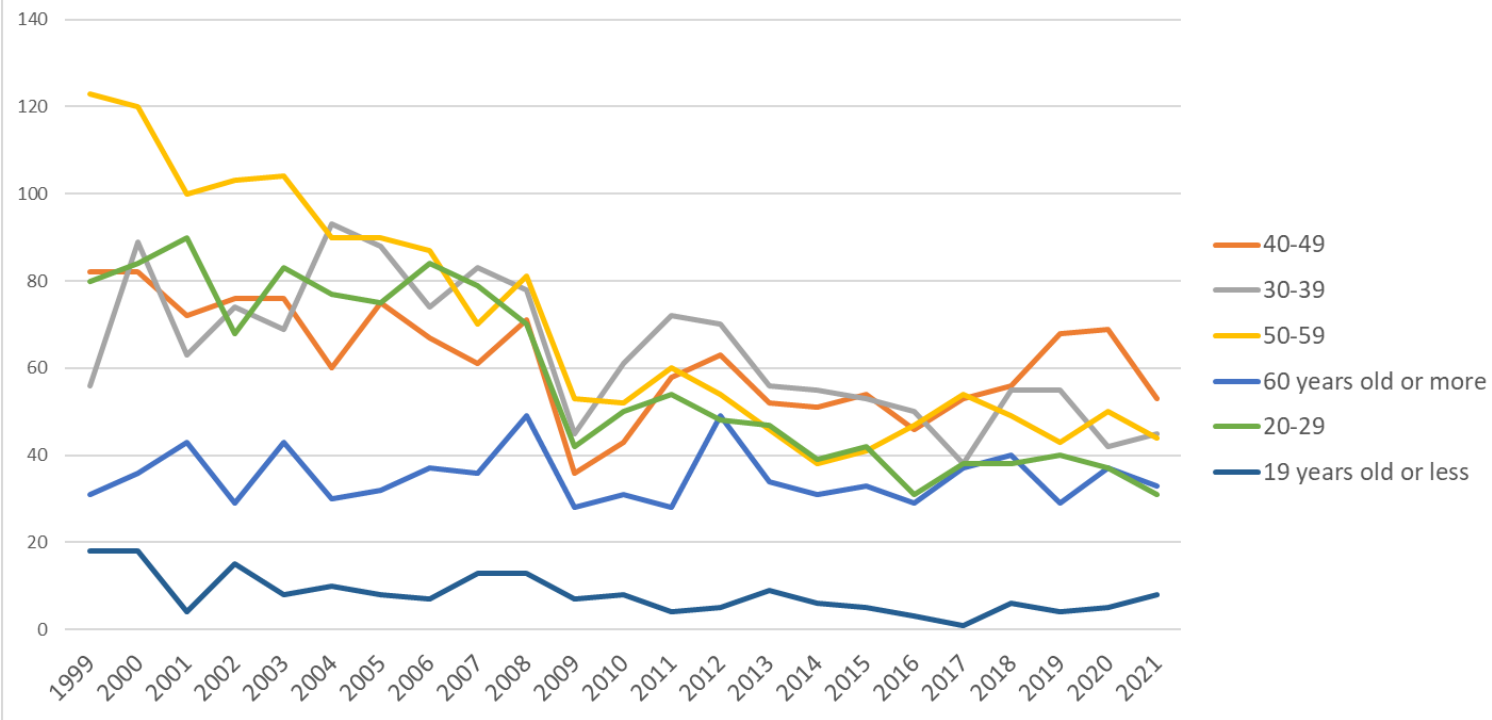
Transition of fatal and non-fatal accidents in small causal agents in code no. 010806 rubber products (1999-2021)

Transition of fatal and non-fatal accidents in top 7 type of accidents  
(1999-2021)



Transition of fatal and non-fatal accidents in type of accidents in code no. 010806 rubber products (1999-2021)

Transition of fatal and non-fatal accidents in workers ages (1999-2021)



Transition of fatal and non-fatal accidents in workers ages in code no. 010806 rubber products (1999-2021)







































14	Kanagawa	18	15	18		10		8	12	6	5	4	3	10	10	8	6	9	9	5	6	8	7	1	178	Kanagawa	
43	Kumamoto	2	5	2		1		2	5	4	2	2	1	1	3		2	2	1	4	2	1		1	43	Kumamoto	
20	Nagano	2	4	1				1	1	1	4	2	2	2	2	1	5			2	2	3	1	1	37	Nagano	
5	Akita	2	3	3		2		2		1	4		1	1	1	1					1	2	1	1	26	Akita	
18	Fukui	1				2				2			2		1		1	1	1		2		1	1	15	Fukui	
36	Tokushima	6	3	5		4		4	4	2	5	3	1		2		4	2	1	1	1	1			49	Tokushima	
26	Kyoto	3	1	3		4		1	4	2	1			2	1	2		3	1	3	1	3	4		39	Kyoto	
6	Yamagata	2	4	2		4		1	3		1	2	1	1		1		2			1		1		26	Yamagata	
38	Ehime	2	2	4				3	1			2		3	1	1		1	3	2		1			26	Ehime	
19	Yamanashi		2			1		3			1			1		2	1	1	1	3		1			17	Yamanashi	
2	Aomori		1	3		1					1														6	Aomori	
42	Nagasaki		1							1								2	1						5	Nagasaki	
46	Kagoshima	1	1	1																	1	1			5	Kagoshima	
39	Kochi																										Kochi
47	Okinawa																										Okinawa
	total	390	429	372		383		368	356	342	362	211	245	276	289	244	220	228	206	221	244	239	240	214	6,079	total	

Data source : <https://anzeninfo.mhlw.go.jp/user/anzen/tok/anst00.htm>

Return to [https://www.jisha.or.jp/english/statistics/202211\\_23.html](https://www.jisha.or.jp/english/statistics/202211_23.html)