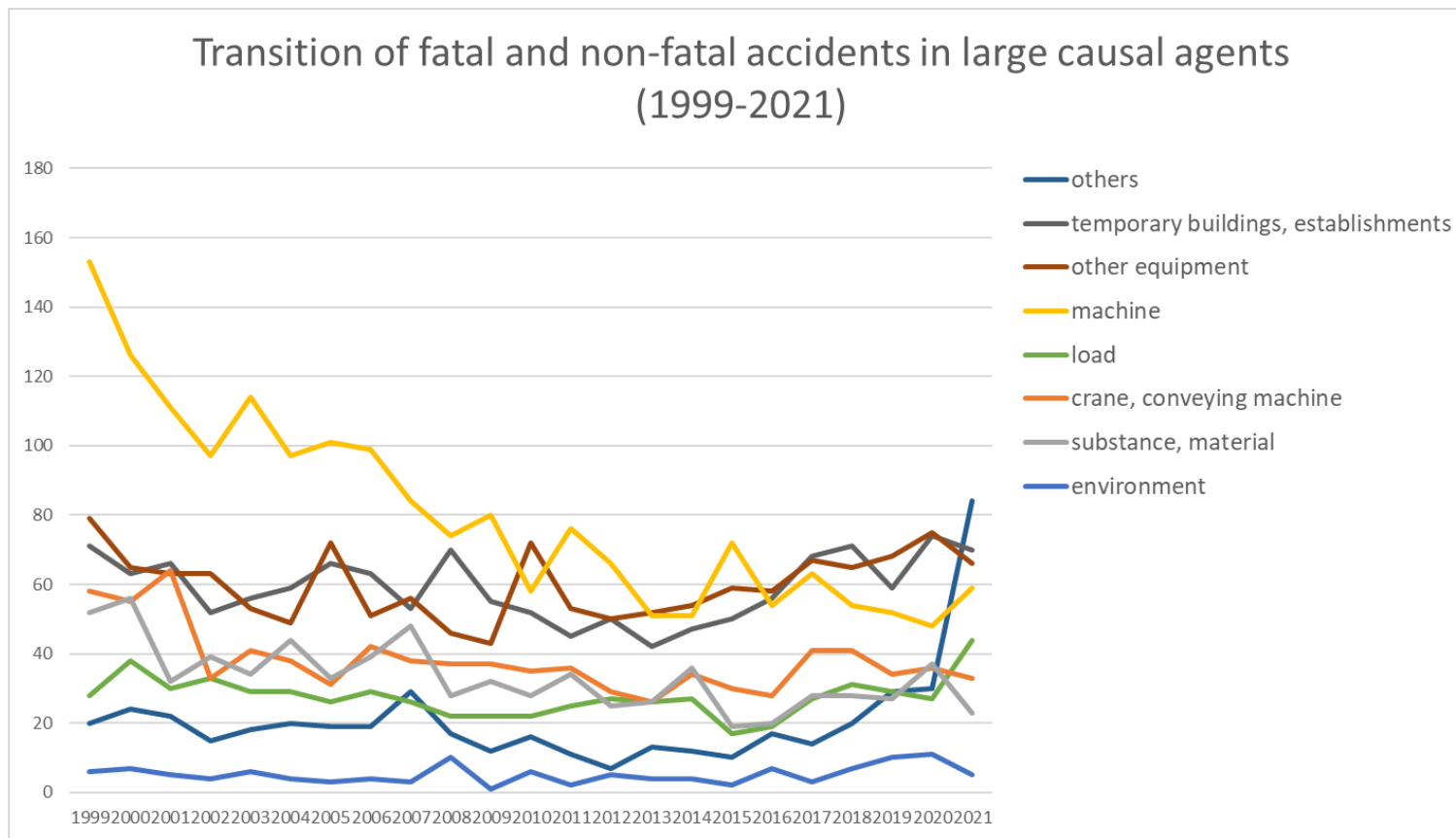
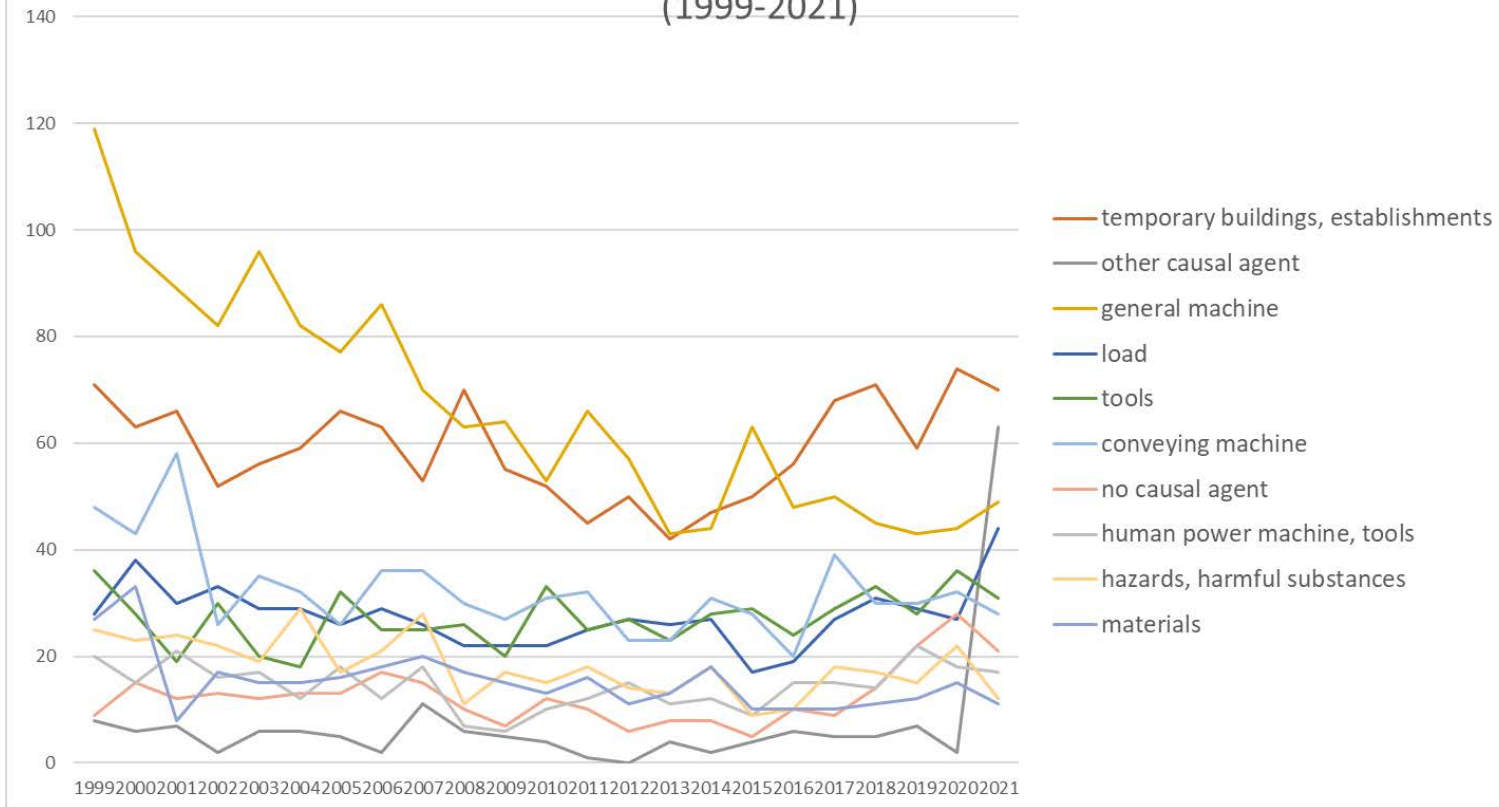


Transition of fatal and non-fatal accidents in each element like as causal agents, type of accidents, etc. in code no. 010899 other chemical products (1999-2021)



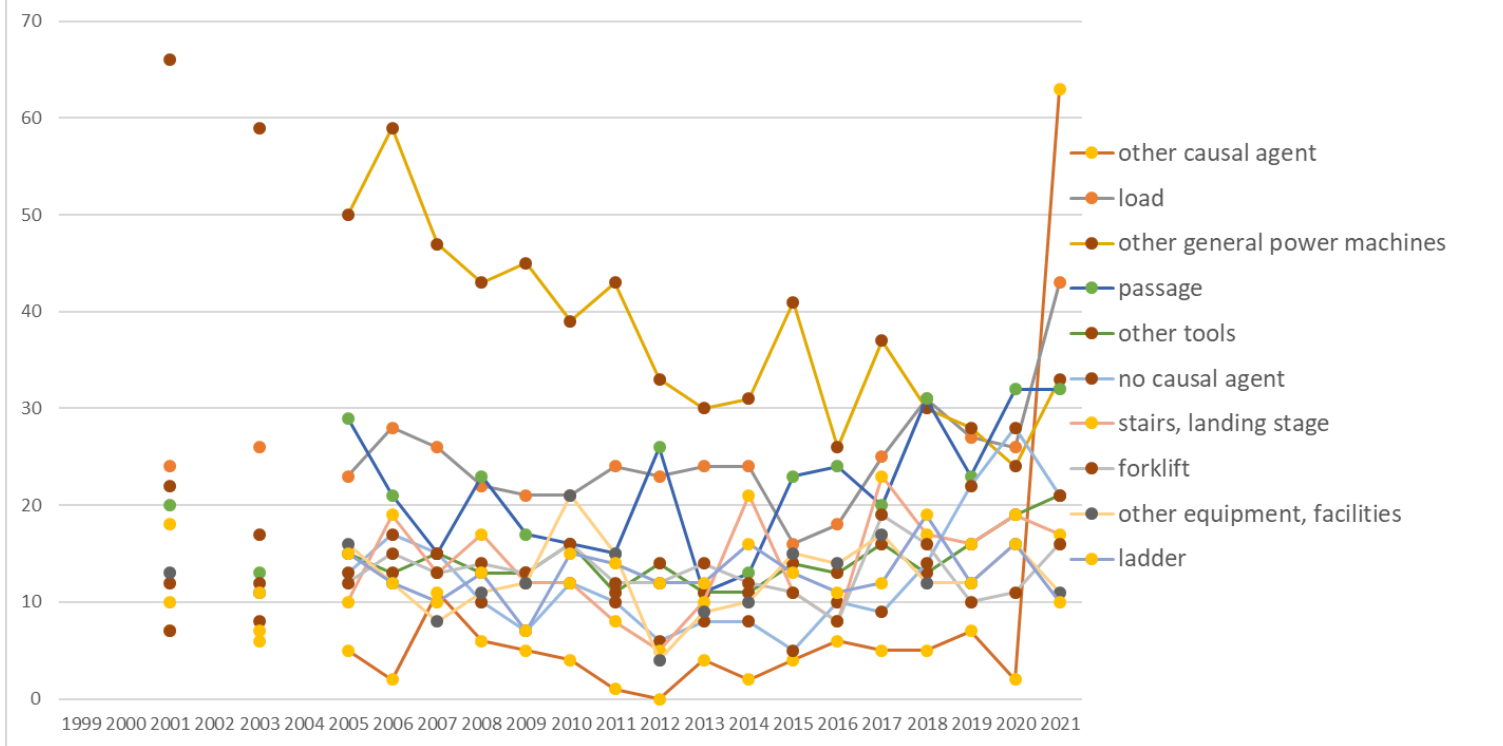
Transition of fatal and non-fatal accidents in large causal agents in code no. 010899 other chemical products (1999-2021)

Transition of fatal and non-fatal accidents in top 10 middle causal agents (1999-2021)



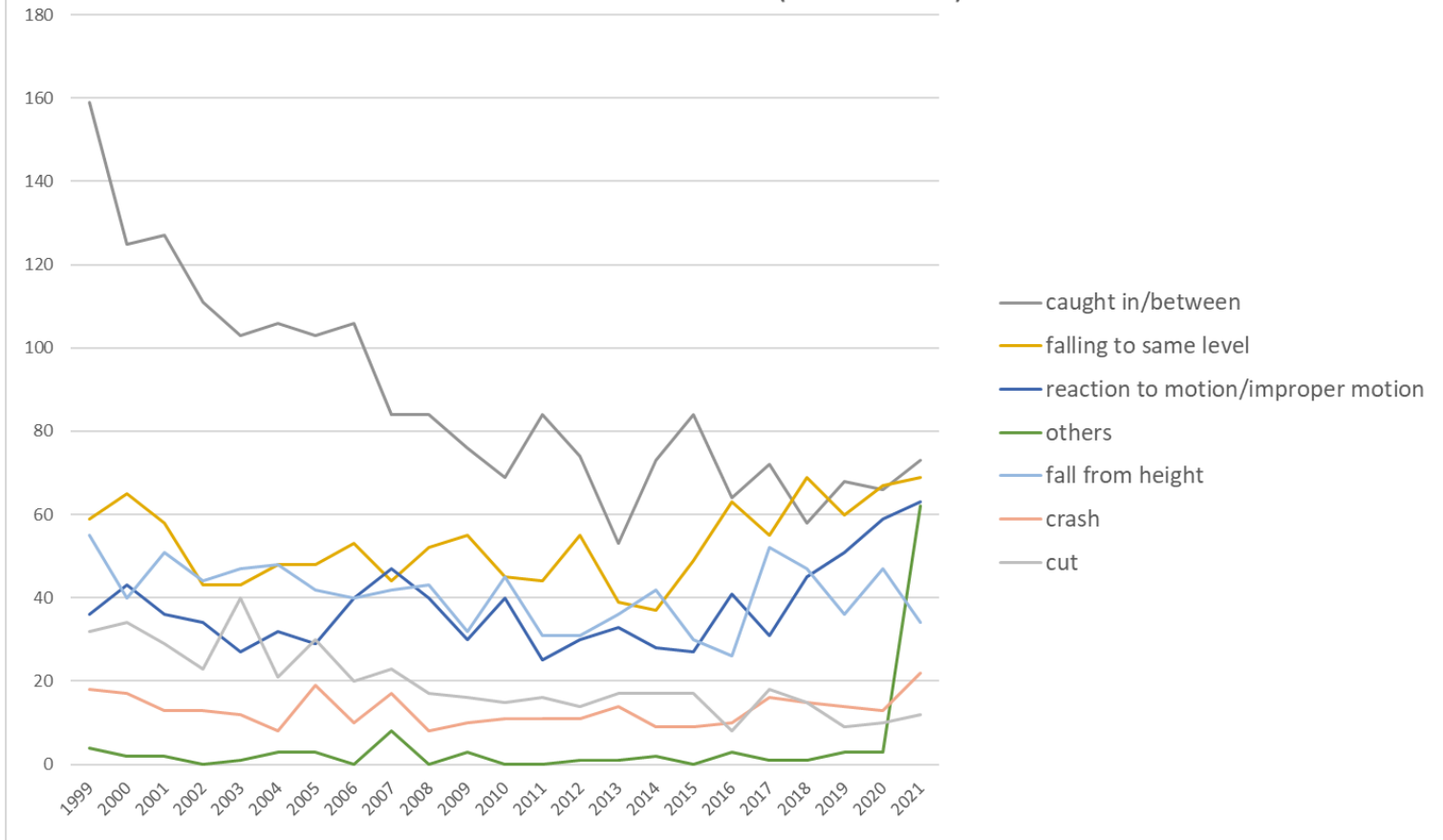
Transition of fatal and non-fatal accidents in middle causal agents in code no. 010899 other chemical products (1999-2021)

Transition of fatal and non-fatal accidents in top 10 small causal agents
(1999-2021)



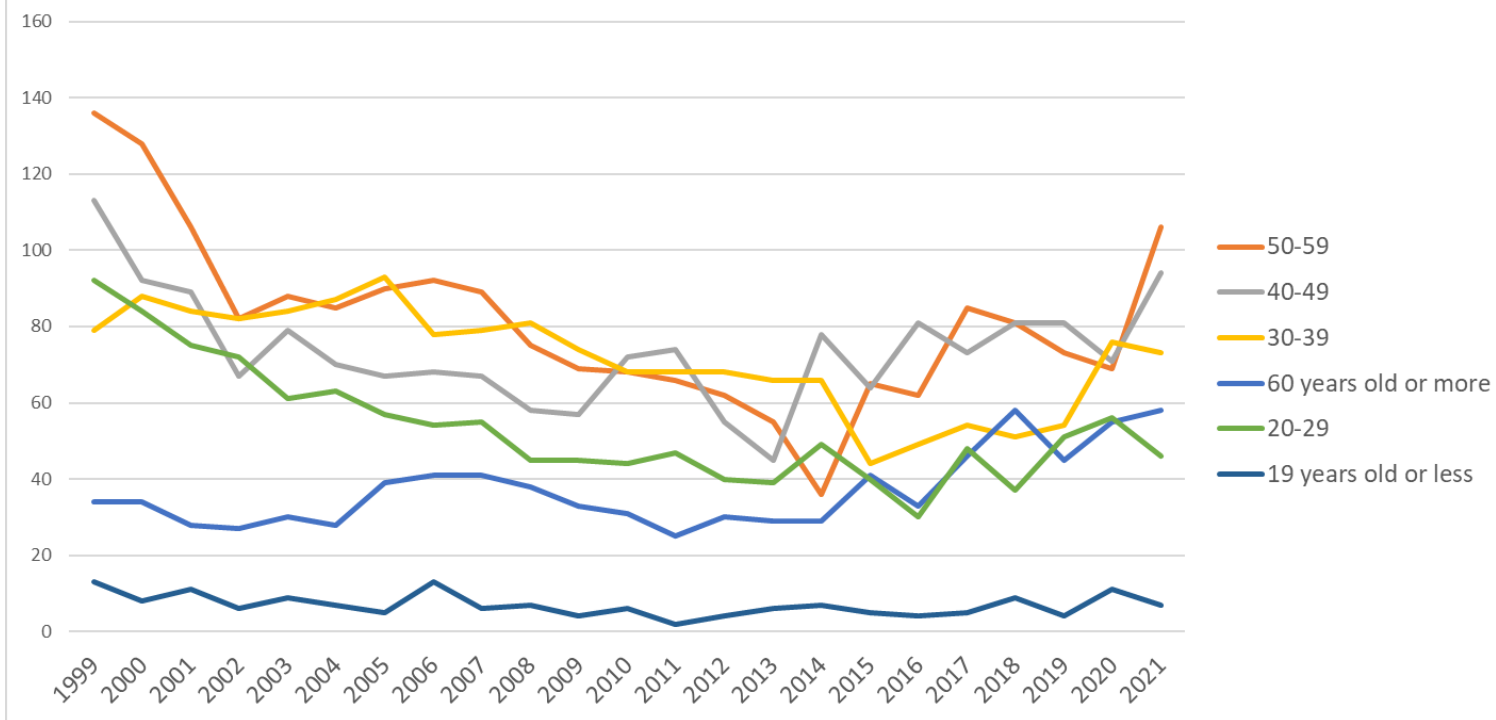
Transition of fatal and non-fatal accidents in small causal agents in code no. 010899 other chemical products (1999-2021)

Transition of fatal and non-fatal accidents in top 7 type of accidents
(1999-2021)



Transition of fatal and non-fatal accidents in type of accidents in code no. 010899 other chemical products (1999-2021)

Transition of fatal and non-fatal accidents in workers ages (1999-2021)



Transition of fatal and non-fatal accidents in workers ages in code no. 010899 other chemical products (1999-2021)

23	Aichi	19	32	27		29		27	19	22	21	21	18	18	17	15	13	9	13	22	13	20	17	15	407	Aichi
8	Ibaraki	6	7	17		15		18	9	9	10	11	13	15	9	7	14	14	14	19	16	11	14	14	262	Ibaraki
21	Gifu	11	16	8		13		14	9	8	9	5	8	9	6	6	6	4	5	3	9	6	5	13	173	Gifu
22	Shizuoka	31	29	16		22		14	16	9	12	7	11	10	6	7	4	10	9	16	24	20	14	12	299	Shizuoka
40	Fukuoka	16	9	10		15		7	13	8	9	10	6	9	5	4	5	7	9	5	6	5	14	11	183	Fukuoka
25	Shiga	11	8	11		8		14	11	10	11	10	12	6	4	6	16	8	9	15	12	12	9	9	212	Shiga
7	Fukushima	4	3	6		4			5	5	4	4	5	5	9	3	5	3	2	8	6	5	3	9	98	Fukushima
30	Wakayama	8	2	9				7	9	7	6	6	7	5	6	13	2	5	3	8	9	6	11	8	137	Wakayama
29	Nara	11	7	5		2		4	4	6	4	3	2	1	4	5	5	7	4	4	11	9	2	7	107	Nara
13	Tokyo	16	16	15		17		10	9	10	10	4	4	7	2	4	5	3	5	11	4	9	12	6	179	Tokyo
15	Niigata	5	4	3		4		5	3	9	6	3	2	4	4	3	1	1	1	2	5	1	6	6	78	Niigata
33	Okayama	10	13	13		11		8	2	13	3	6	7	13	6	9	10	3	4	9	10	14	13	5	182	Okayama
4	Miyagi	6	8	7		3		8	2	4	2	1	4	2	9	2	2	3	3	2	5	2	2	4	81	Miyagi
34	Hiroshima	2	6	10		7		4	4	5	3	3	2	1	2	1	3	3		3	3	2	2	4	70	Hiroshima
37	Kagawa	3	2	1		3		2	4	3	5	5	2	4	4	5	5	6	2	4	2	1	3	4	70	Kagawa
38	Ehime	5	6	8		2		1			1		2	3	1	3	1	3		3	2	3	3	4	51	Ehime
36	Tokushima	3	2	1		2		2	1	3				3		2	2	2	4	4	2	2	4	4	43	Tokushima
31	Tottori			1					1	1	1			1	1		1			1	1	1	1	4	15	Tottori
1	Hokkaido	7	8	9		3		4	7	6	3	7	5	6	3	3	5	4	6	8	5	3	6	3	111	Hokkaido
3	Iwate	2	2	2		4		8	3	3	4	2	1	1	2	4	2	2	4	3	1		5	3	58	Iwate
6	Yamagata		1	1		2				1	2	1	3	4	3	2	1	2	2	1	1			2	29	Yamagata
17	Ishikawa		1	1		1				1					2		1				1		1	2	11	Ishikawa
26	Kyoto	10	5	3		6		7	8	4	3	4	4	4	2	2	2	11	2	7	9	3	1	1	98	Kyoto
35	Yamaguchi	9	6	6		5		6	8	4	4	5	3	3	2	3	2	2	2	1	4	1	9	1	86	Yamaguchi

20	Nagano	10	6	3		1		1	2	4	5	2	2	2		1	4	1	2	1		6	2	1	56	Nagano
19	Yamanashi	5		2		2		1	3	1	4	4		3	3	1	2	3	2	3	1	6	3	1	50	Yamanashi
43	Kumamoto	4	4			1			2	2	1			1	1	2	4	3	3		3	4	3	1	39	Kumamoto
44	Oita	7	6	3		1		2		3	1	1	4	1	3		2	2			1			1	38	Oita
18	Fukui	7	3					6	1		1			2	2	1	2	2	2	2	1	2	1	1	36	Fukui
42	Nagasaki	1								5	1	1	1	1						2			1	1	14	Nagasaki
46	Kagoshima			1				1	1	1			1		1	1				1	2	1	2	1	14	Kagoshima
16	Toyama	8	7	1		6		1	4	5	1	4	1	4	4	1	1	2	3	2	2	4	2		63	Toyama
39	Kochi	1				2				1			1	2	2	1	2	1		4	1	4	3		25	Kochi
41	Saga	4	2					1			4			1	1	1		2		1	2	2	2		23	Saga
45	Miyazaki	2		3		2		2	1	1	1				1		1	1		2		2	1		20	Miyazaki
32	Shimane		4			1		1	1			1	1	1		1							2		13	Shimane
47	Okinawa	1		2		1			1		1		1	1							2				10	Okinawa
5	Akita	1		4		1		1															1		8	Akita
2	Aomori	1		1											2	2									6	Aomori
	total	467	434	393		351		351	346	337	304	282	289	282	259	240	265	259	259	311	317	308	338	384	6,776	total

Data source : <https://anzeninfo.mhlw.go.jp/user/anzen/tok/anst00.htm>

Return to https://www.jisha.or.jp/english/statistics/202211_23.html