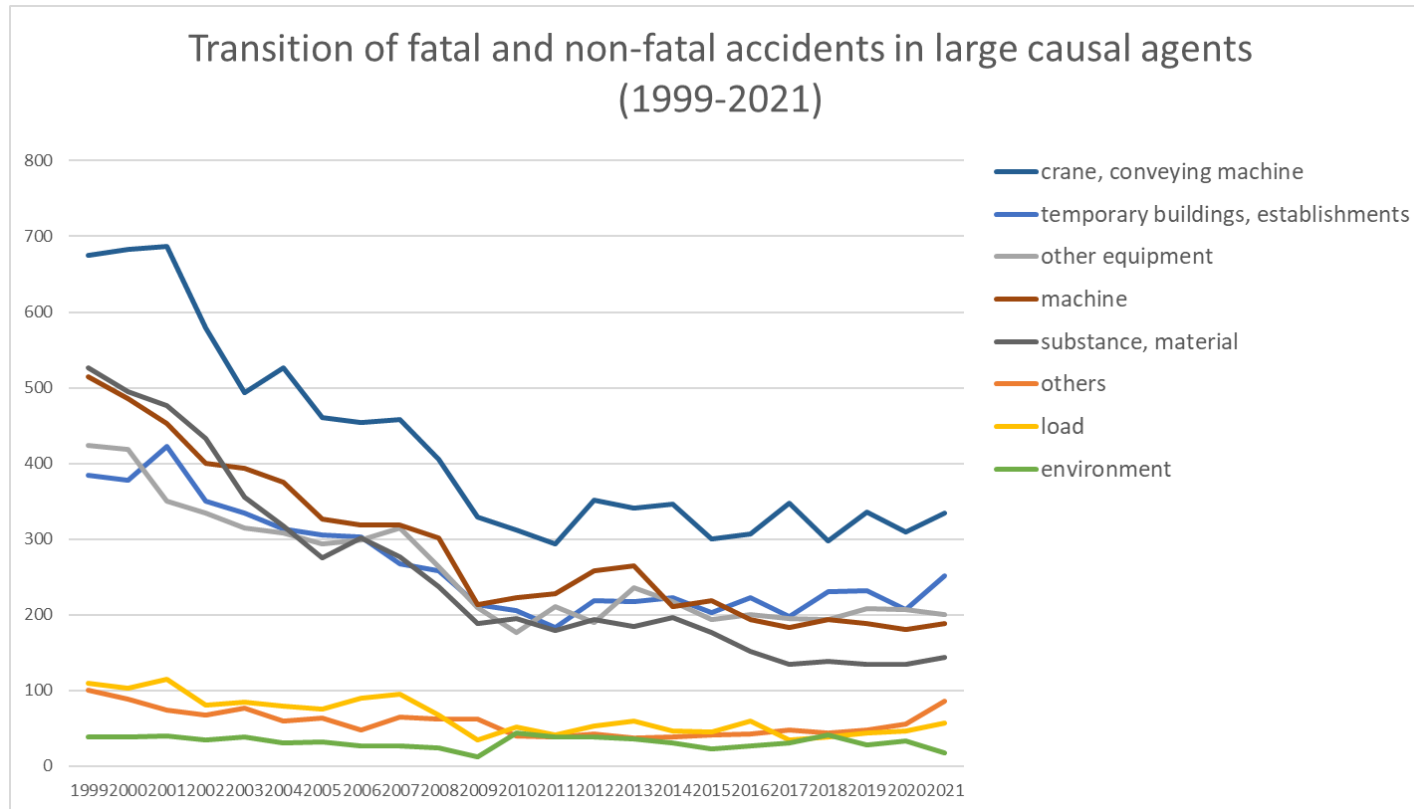
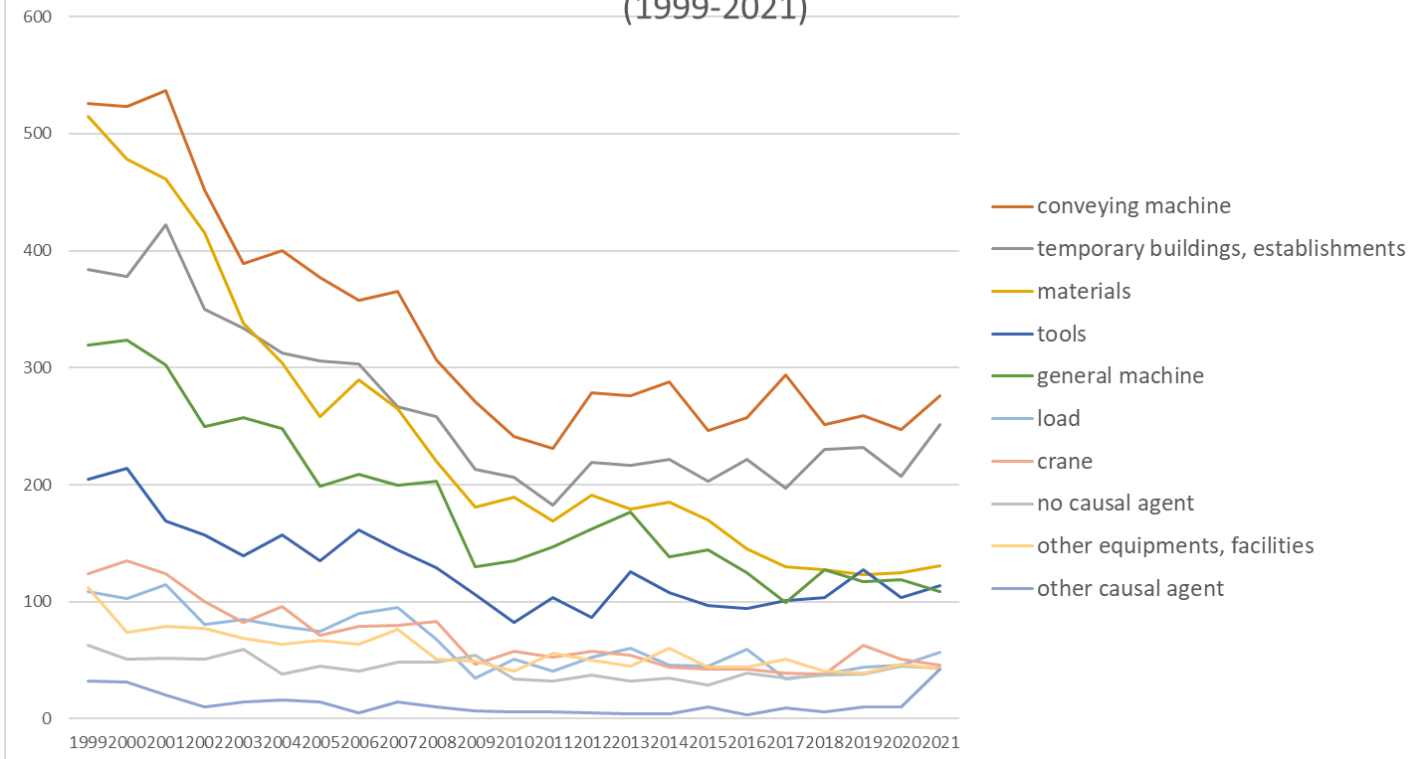


Transition of fatal and non-fatal accidents in each element like as causal agents, type of accidents, etc. in code no. 0109 sand and stone products (1999-2021)



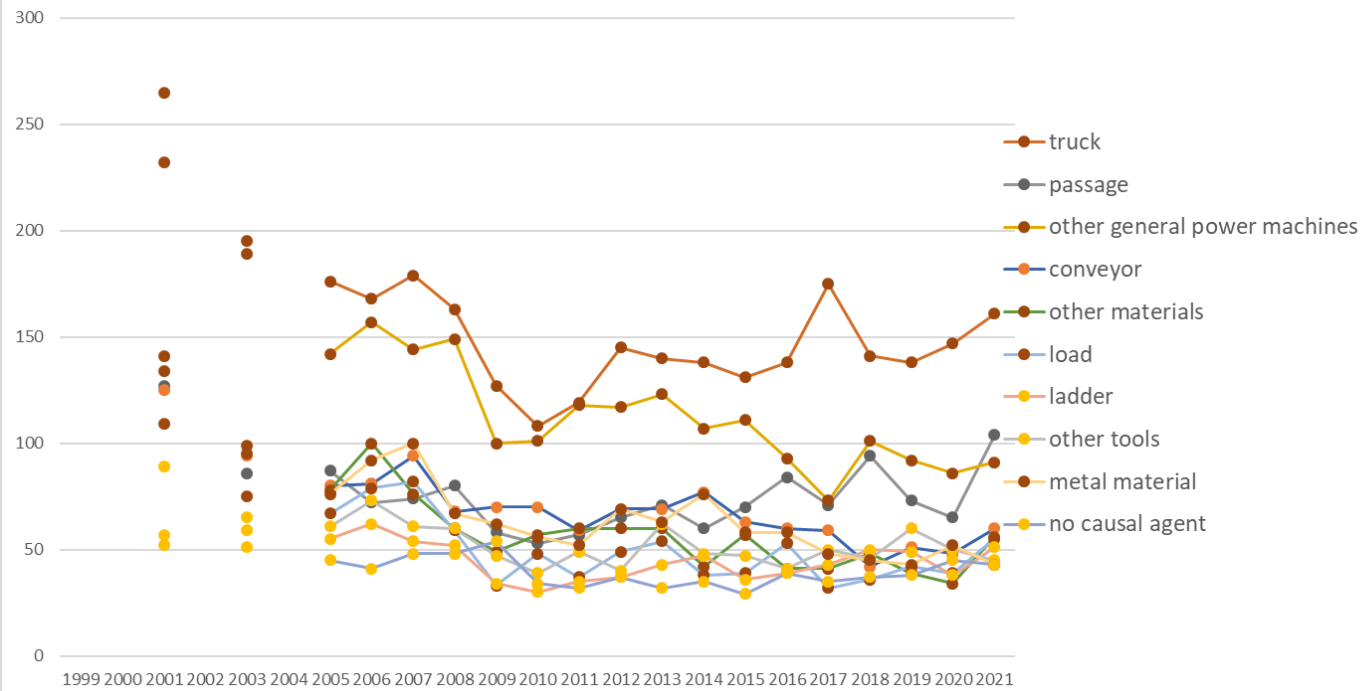
Transition of fatal and non-fatal accidents in large causal agents in code no. 0109 sand and stone products (1999-2021)

Transition of fatal and non-fatal accidents in top 10 middle causal agents
(1999-2021)



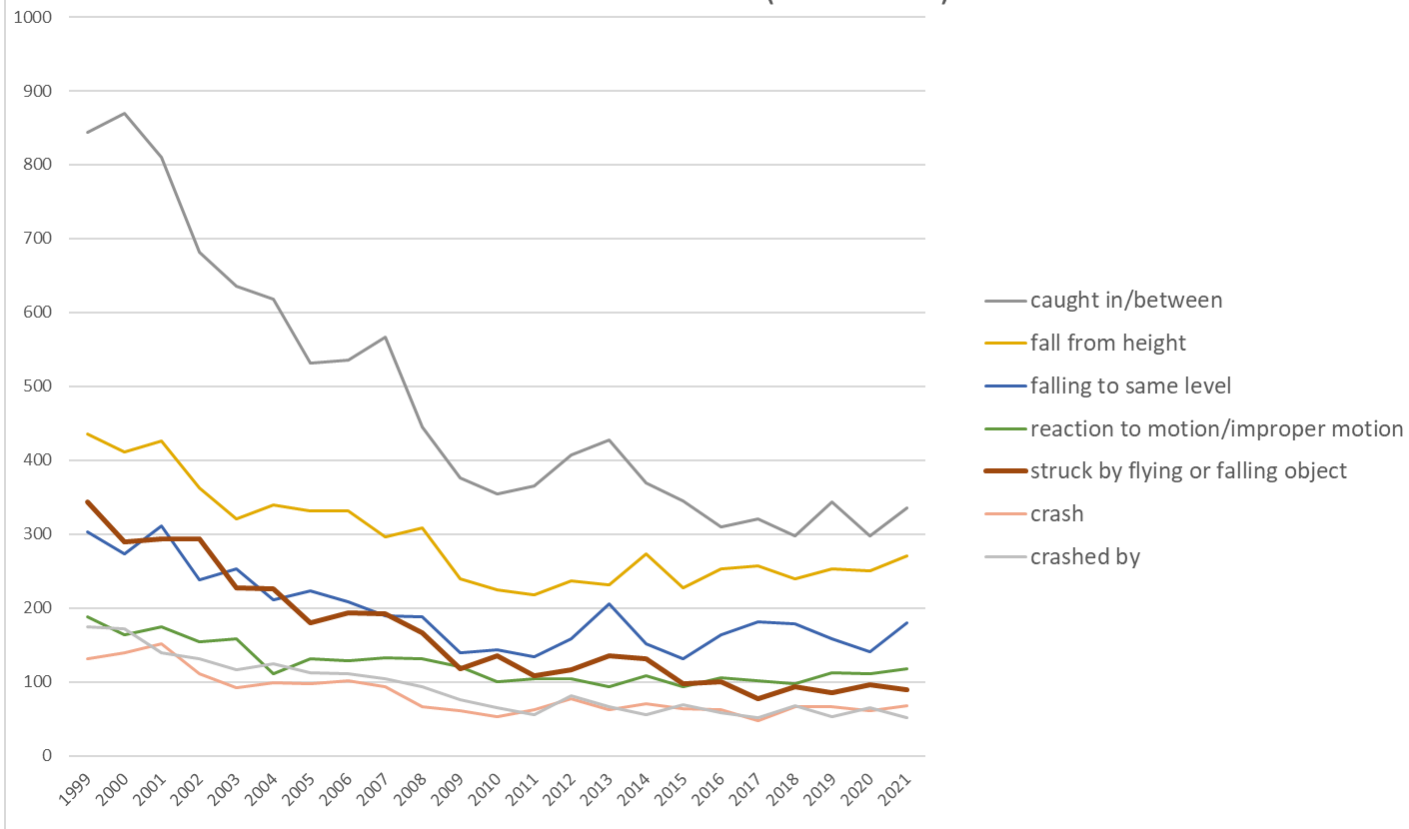
Transition of fatal and non-fatal accidents in middle causal agents in code no. 0109 sand and stone products (1999-2021)

Transition of fatal and non-fatal accidents in top 10 small causal agents (1999-2021)



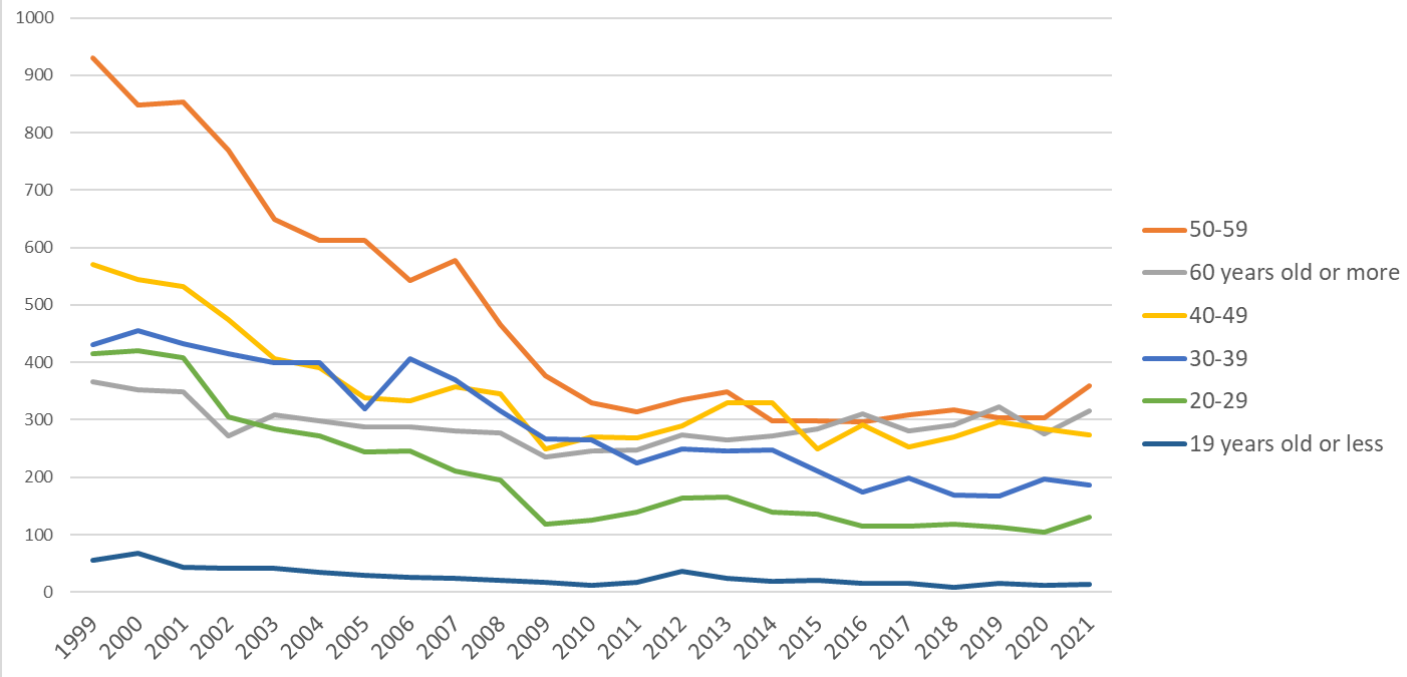
Transition of fatal and non-fatal accidents in small causal agents in code no. 0109 sand and stone products (1999-2021)

Transition of fatal and non-fatal accidents in top 7 type of accidents
(1999-2021)



Transition of fatal and non-fatal accidents in type of accidents in code no. 0109 sand and stone products (1999-2021)

Transition of fatal and non-fatal accidents in workers ages (1999-2021)



Transition of fatal and non-fatal accidents in workers ages in code no. 0109 sand and stone products (1999-2021)

26	Kyoto	43	40	29		32		26	24	26	20	36	22	21	22	21	14	18	18	16	13	10	14	18	483	Kyoto
45	Miyazaki	42	36	38		22		32	17	21	22	22	11	14	15	15	12	18	11	9	11	15	20	18	421	Miyazaki
6	Yamagata	35	33	40		21		12	18	9	13	11	10	11	20	19	8	15	18	18	14	13	16	18	372	Yamagata
41	Saga	36	37	22		27		17	23	26	18	18	13	13	18	18	10	16	13	9	15	12	16	16	393	Saga
39	Kochi	28	45	39		32		20	13	14	21	21	12	11	11	11	7	15	12	15	13	12	16	16	384	Kochi
37	Kagawa	48	50	58		34		27	39	21	26	27	22	22	24	22	27	14	19	20	17	12	25	15	569	Kagawa
30	Wakayama	25	18	34		17		26	14	20	21	10	15	13	20	17	16	12	15	6	14	11	13	15	352	Wakayama
16	Toyama	41	27	21		25		24	29	23	17	24	15	23	19	15	21	13	14	15	12	16	17	14	425	Toyama
32	Shimane	39	30	35		36		17	27	27	24	13	21	18	13	19	20	21	8	13	12	8	8	14	423	Shimane
35	Yamaguchi	25	28	27		33		18	21	25	21	13	16	19	17	14	12	11	17	10	10	17	12	13	379	Yamaguchi
42	Nagasaki	46	40	33		26		23	27	29	11	16	12	16	19	20	19	15	23	17	19	18	23	12	464	Nagasaki
19	Yamanashi	31	25	25		23		14	21	19	12	9	8	14	18	20	19	12	9	9	8	8	6	11	321	Yamanashi
36	Tokushima	29	25	20		15		13	9	13	9	13	10	7	6	10	8	16	14	16	10	11	5	11	270	Tokushima
29	Nara	20	31	23		22		18	15	12	20	11	9	4	14	11	10	5	10	4	8	10	10	8	275	Nara
5	Akita	30	31	19		12		10	12	9	16	19	13	14	9	20	10	9	6	11	11	13	10	7	291	Akita
2	Aomori	32	23	16		20		10	17	7	10	11	7	9	9	8	6	8	8	6	11	14	16	7	255	Aomori
31	Tottori	13	5	8		7		6	10	4	2	4	8	7	6	1	5	3	4	2	6	3	4	7	115	Tottori
18	Fukui	35	25	27		22		21	19	15	18	16	8	18	12	11	15	9	14	12	18	16	11	6	348	Fukui
17	Ishikawa	23	23	20		14		20	16	18	17	9	9	10	8	12	7	9	11	16	8	12	10	6	278	Ishikawa
47	Okinawa	14	16	18		14		12	11	17	10	13	5	9	10	11	16	8	6	11	11	15	15	5	247	Okinawa
	total	2,770	2,690	2,618		2,091		1,834	1,841	1,820	1,619	1,262	1,248	1,212	1,347	1,377	1,307	1,201	1,203	1,170	1,176	1,219	1,174	1,278	33,457	total

Data source : <https://anzeninfo.mhlw.go.jp/user/anzen/tok/anst00.htm>

Return to https://www.jisha.or.jp/english/statistics/202211_23.html