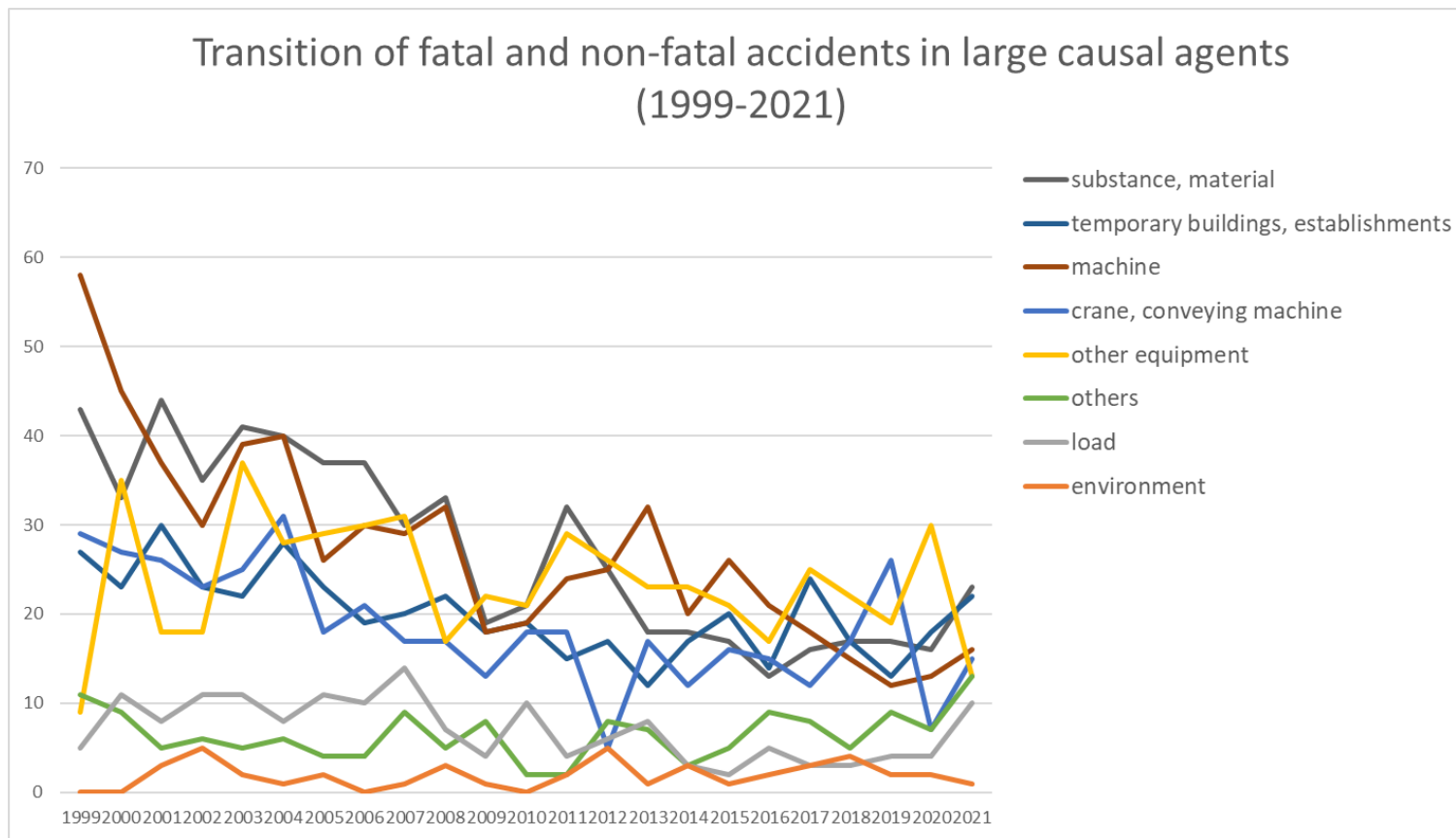
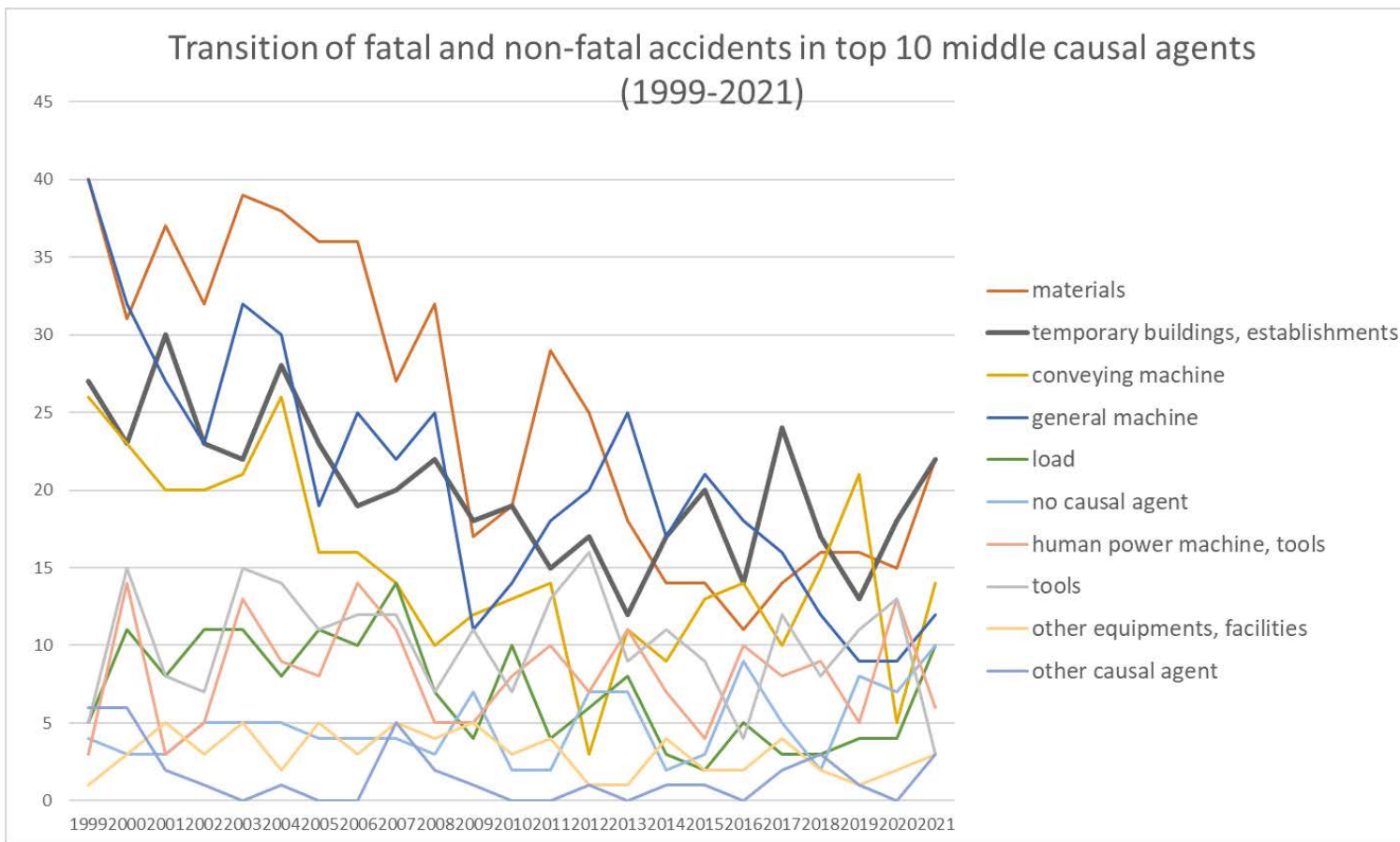


Transition of fatal and non-fatal accidents in each element like as causal agents, type of accidents, etc. in code no. 010902 glass products (1999-2021)



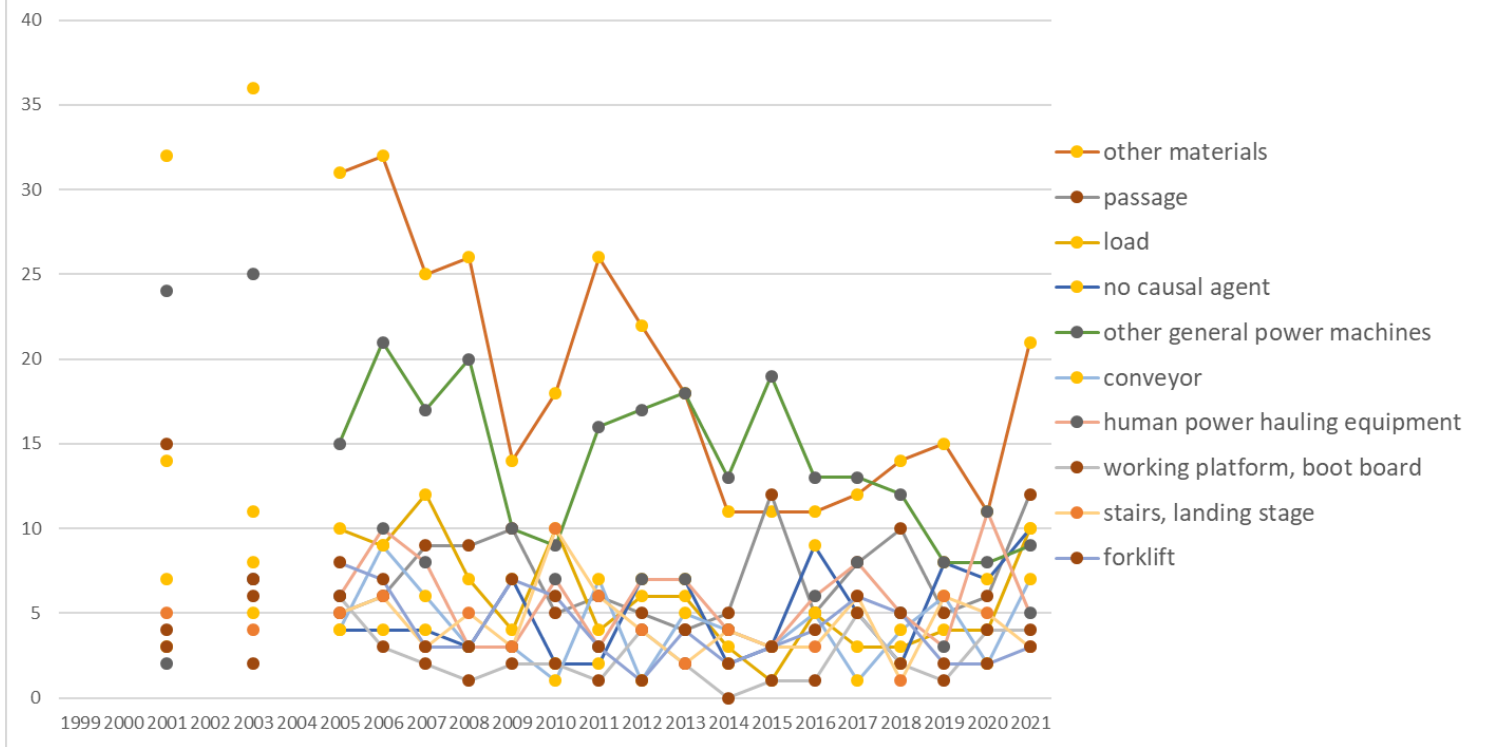
Transition of fatal and non-fatal accidents in large causal agents in code no. 010902 glass products (1999-2021)

Transition of fatal and non-fatal accidents in top 10 middle causal agents
(1999-2021)



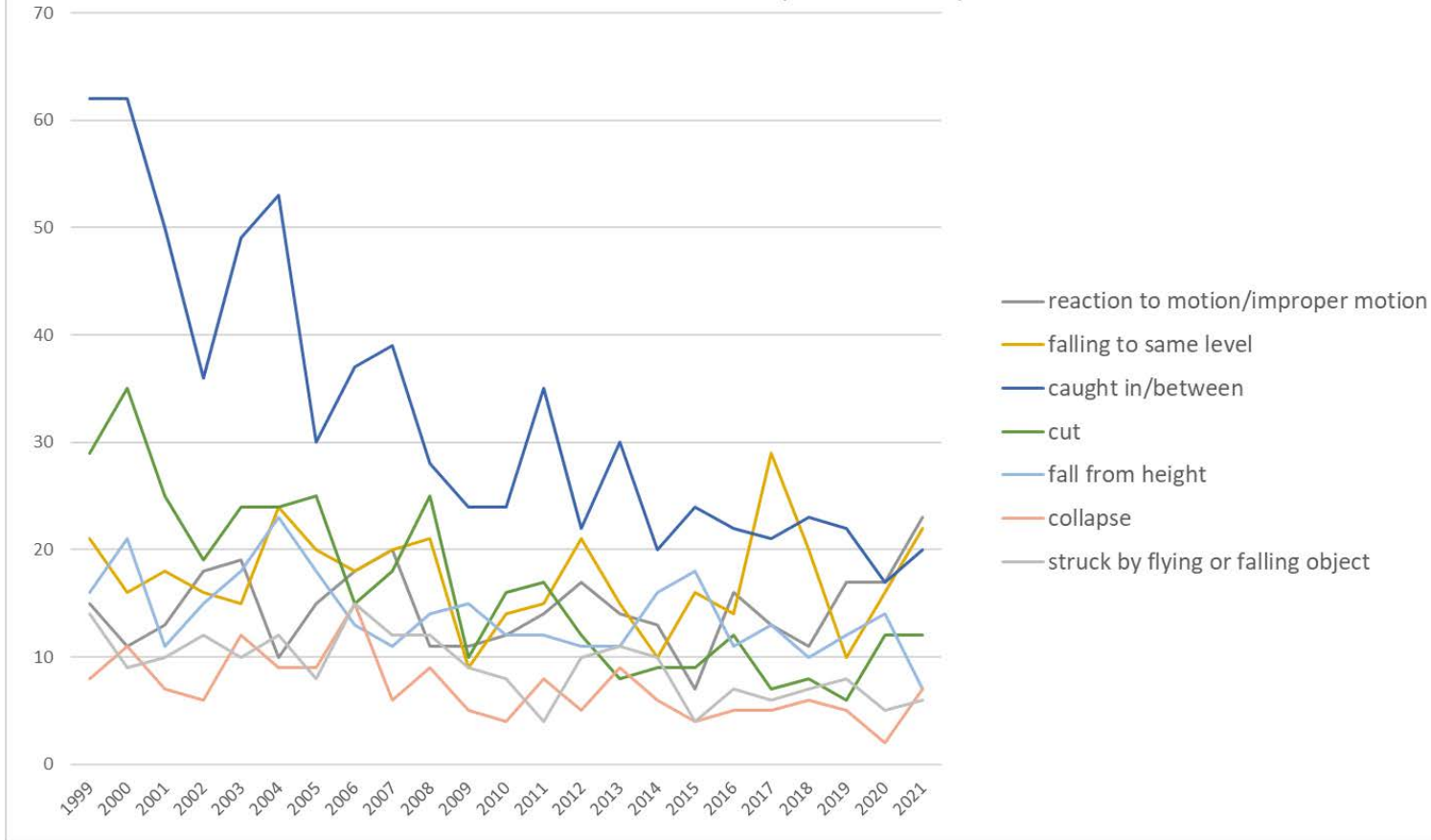
Transition of fatal and non-fatal accidents in middle causal agents in code no. 010902 glass products (1999-2021)

Transition of fatal and non-fatal accidents in top 10 small causal agents (1999-2021)



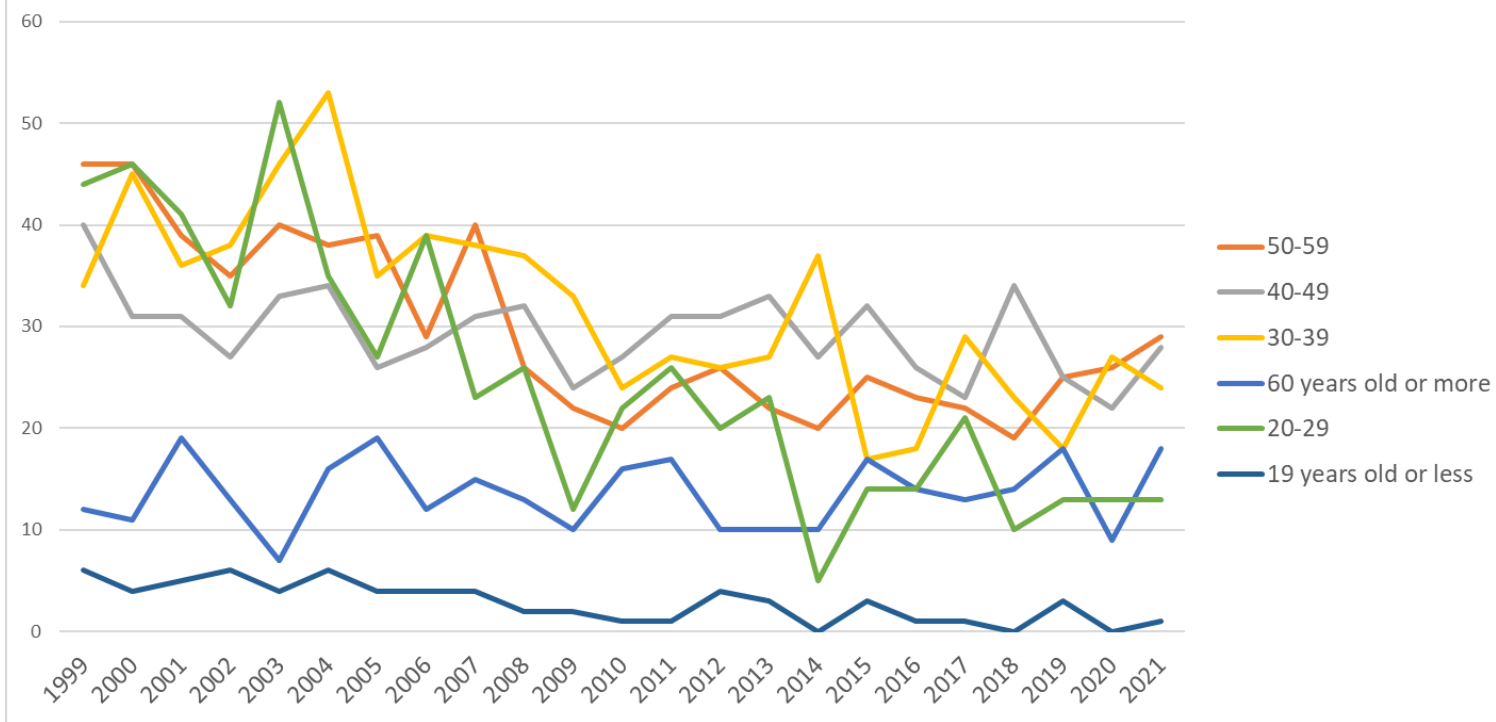
Transition of fatal and non-fatal accidents in small causal agents in code no. 010902 glass products (1999-2021)

Transition of fatal and non-fatal accidents in top 7 type of accidents
(1999-2021)



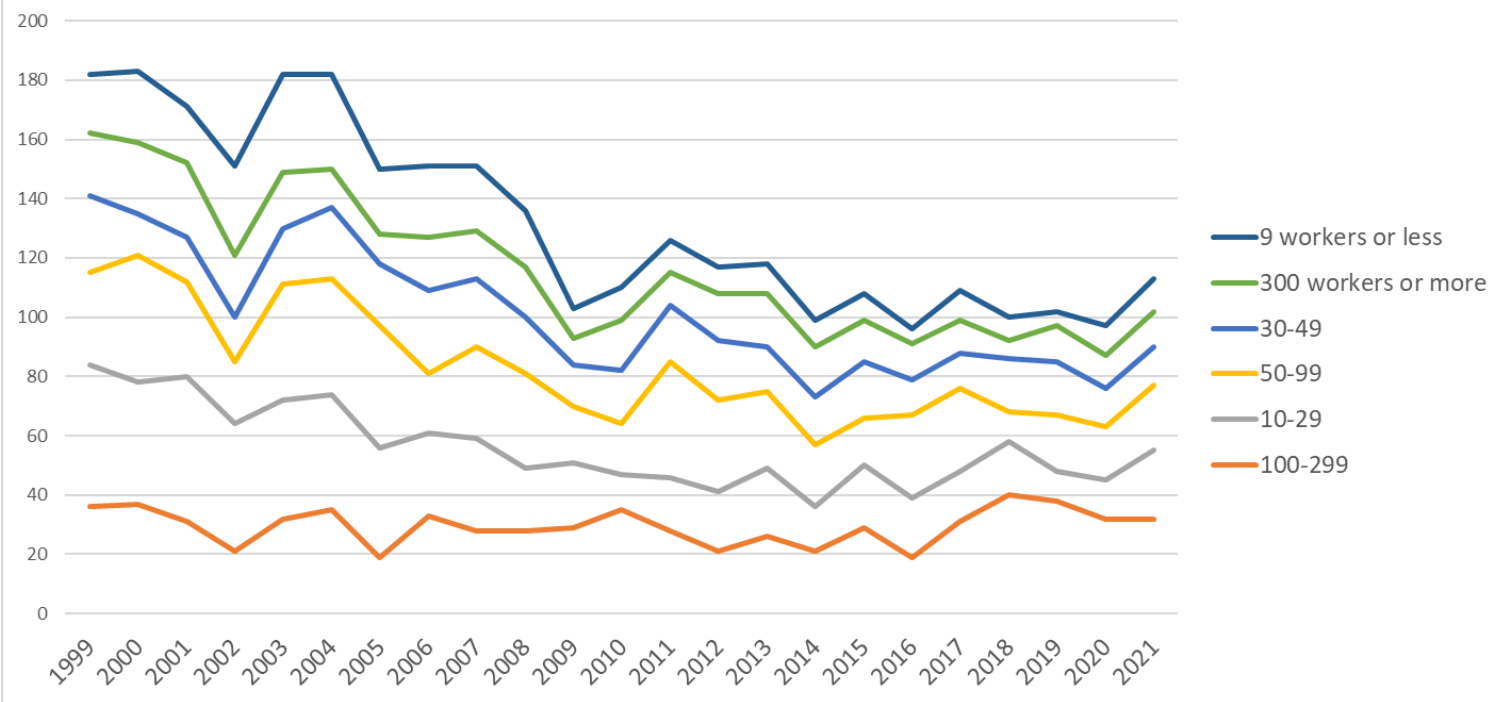
Transition of fatal and non-fatal accidents in type of accidents in code no. 010902 glass products (1999-2021)

Transition of fatal and non-fatal accidents in workers ages (1999-2021)



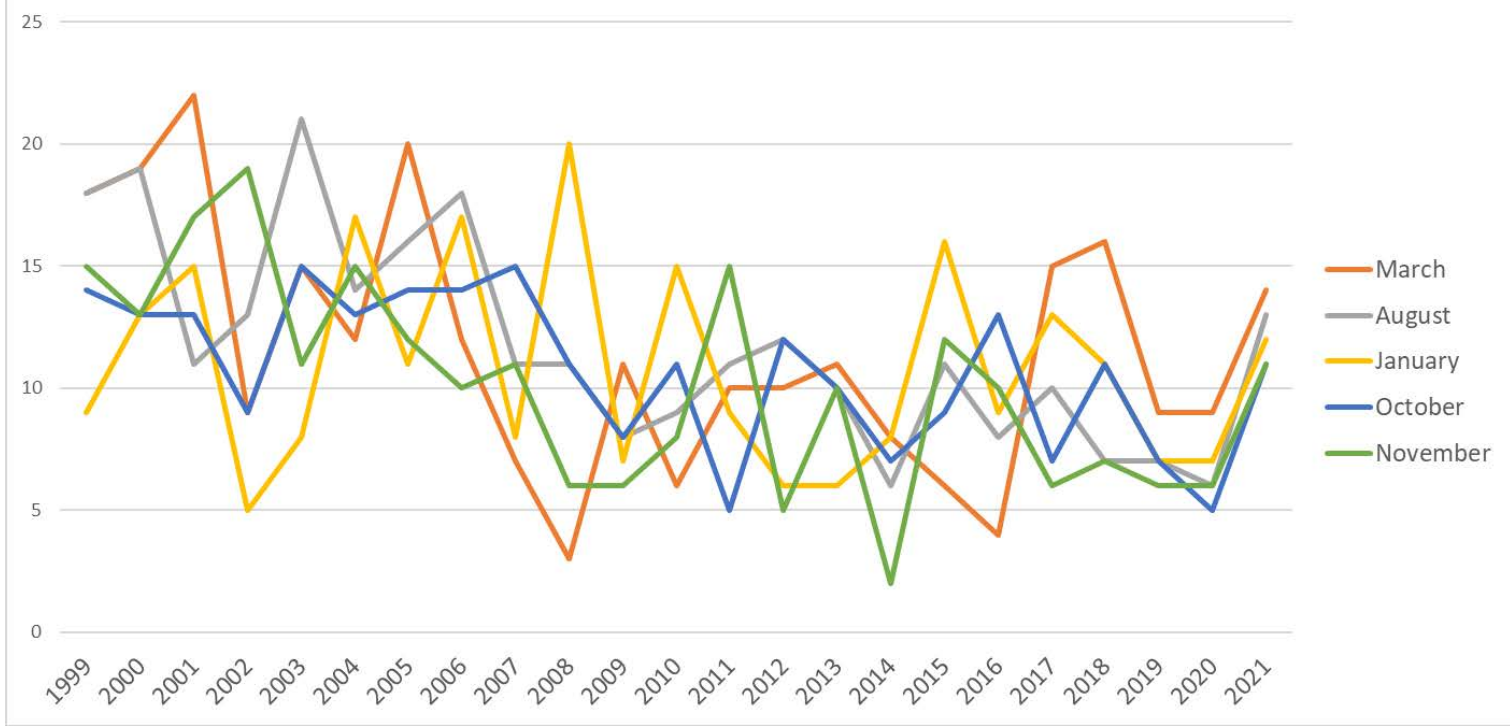
Transition of fatal and non-fatal accidents in workers ages in code no. 010902 glass products (1999-2021)

Transition of fatal and non-fatal accidents in workers scales (1999-2021)



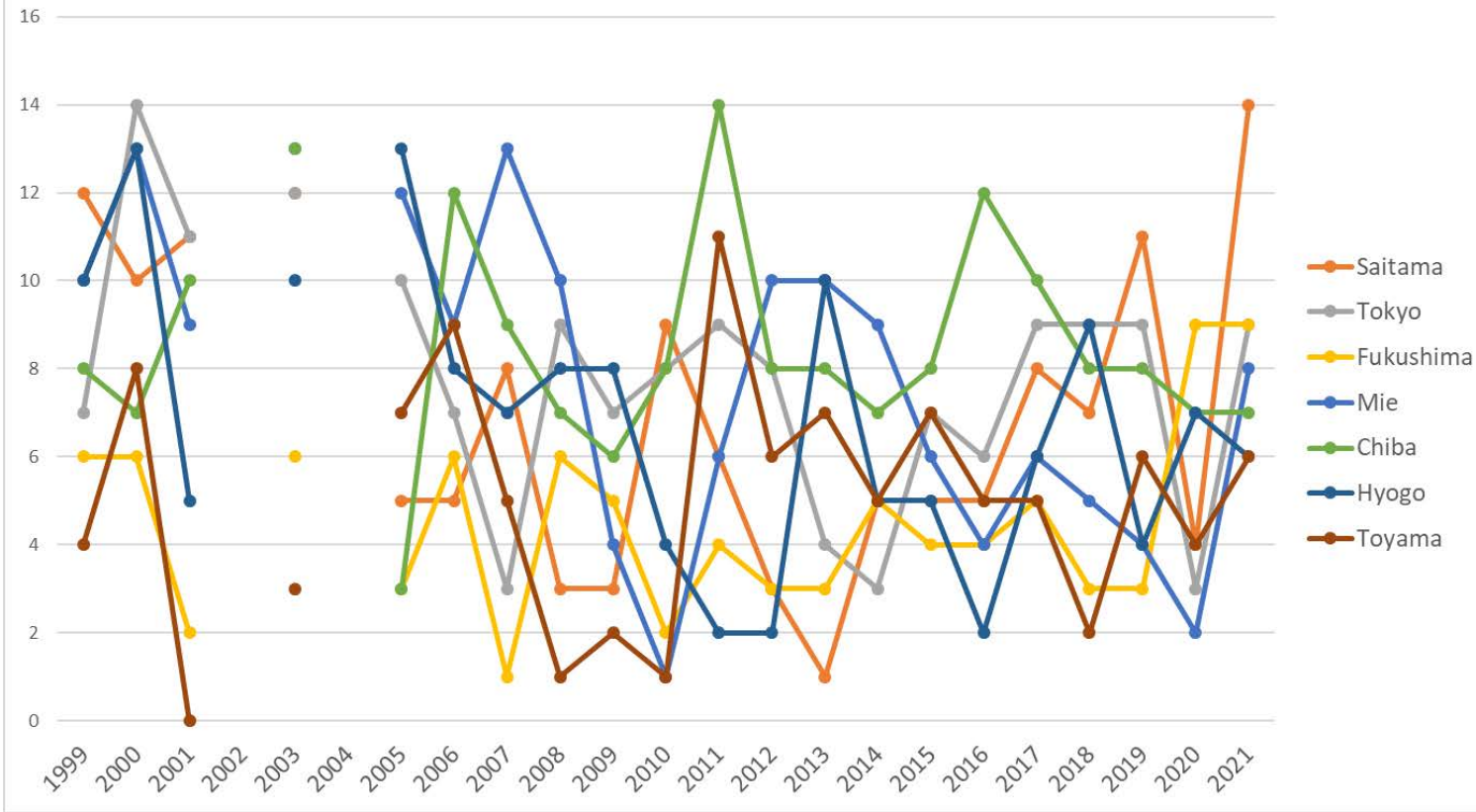
Transition of fatal and non-fatal accidents in workers scales in code no. 010902 glass products (1999-2021)

Transition of fatal and non-fatal accidents in top 5 months (1999-2021)



Transition of fatal and non-fatal accidents in months in code no. 010902 glass products (1999-2021)

Transition of fatal and non-fatal accidents in top 7 prefectures (1999-2021)



Transition of fatal and non-fatal accidents in prefectures in code no. 010902 glass products (1999-2021)

Transition of fatal and non-fatal accidents in large causal agents in code no. 010902 glass products (1999-2021)

code	Causal (L) agents	1999	2000	2001	2002	2003	2004	2005	2006	2007	2008	2009	2010	2011	2012	2013	2014	2015	2016	2017	2018	2019	2020	2021	total	Causal (L) agents
5	substance, material	43	33	44	35	41	40	37	37	30	33	19	21	32	25	18	18	17	13	16	17	17	16	23	625	substance, material
4	temporary buildings, establishments	27	23	30	23	22	28	23	19	20	22	18	19	15	17	12	17	20	14	24	17	13	18	22	463	temporary buildings, establishments

1	machine	58	45	37	30	39	40	26	30	29	32	18	19	24	25	32	20	26	21	18	15	12	13	16	625	machine
2	crane, conveying machine	29	27	26	23	25	31	18	21	17	17	13	18	18	5	17	12	16	15	12	17	26	7	15	425	crane, conveying machine
3	other equipment	9	35	18	18	37	28	29	30	31	17	22	21	29	26	23	23	21	17	25	22	19	30	13	543	other equipment
9	others	11	9	5	6	5	6	4	4	9	5	8	2	2	8	7	3	5	9	8	5	9	7	13	150	others
6	load	5	11	8	11	11	8	11	10	14	7	4	10	4	6	8	3	2	5	3	3	4	4	10	162	load
7	environment			3	5	2	1	2		1	3	1		2	5	1	3	1	2	3	4	2	2	1	44	environment
	total	182	183	171	151	182	182	150	151	151	136	103	110	126	117	118	99	108	96	109	100	102	97	113	3,037	total

Transition of fatal and non-fatal accidents in middle causal agents in code no. 010902 glass products (1999-2021)

code	Causal (M) agents	1999	2000	2001	2002	2003	2004	2005	2006	2007	2008	2009	2010	2011	2012	2013	2014	2015	2016	2017	2018	2019	2020	2021	total	Causal (M) agents
52	materials	40	31	37	32	39	38	36	36	27	32	17	19	29	25	18	14	14	11	14	16	16	15	22	578	materials
41	temporary buildings, establishments	27	23	30	23	22	28	23	19	20	22	18	19	15	17	12	17	20	14	24	17	13	18	22	463	temporary buildings, establishments
22	conveying machine	26	23	20	20	21	26	16	16	14	10	12	13	14	3	11	9	13	14	10	15	21	5	14	346	conveying machine
16	general machine	40	32	27	23	32	30	19	25	22	25	11	14	18	20	25	17	21	18	16	12	9	9	12	477	general machine
61	load	5	11	8	11	11	8	11	10	14	7	4	10	4	6	8	3	2	5	3	3	4	4	10	162	load
92	no causal agent	4	3	3	5	5	5	4	4	4	3	7	2	2	7	7	2	3	9	5	2	8	7	10	111	no causal agent

36	human power machine, tools	3	14	3	5	13	9	8	14	11	5	5	8	10	7	11	7	4	10	8	9	5	13	6	188	human power machine, tools
37	tools	5	15	8	7	15	14	11	12	12	7	11	7	13	16	9	11	9	4	12	8	11	13	3	233	tools
39	other equipments, facilities	1	3	5	3	5	2	5	3	5	4	5	3	4	1	1	4	2	2	4	2	1	2	3	70	other equipments, facilities
91	other causal agent	6	6	2	1		1				5	2	1		1		1	1		2	3	1		3	36	other causal agent
13	woodworking machine	1	4	2									1				2							2	13	woodworking machine
15	metal manufacturing machine	12	5	2	7	5	8	6	4	4	6	4	3	2	2	2		3	2	1	1	2	2	1	84	metal manufacturing machine
51	hazards, harmful substances	3	2	7	3	2	2	1	1	3	1	2	2	3			4	3	2	2	1	1	1	1	47	hazards, harmful substances
12	power transmission mechanism	4	3	4		2	2	1	1	2	1	3	1	3	3	4	1	2	1	1	1	1	2	1	44	power transmission mechanism
71	natural environment			3	5	2	1	2		1	3	1		2	5	1	3	1	2	3	4	2	2	1	44	natural environment
23	vehicle	1		2	2	1	4		3	1	4		2		2	2	3	2		2	1		1	1	34	vehicle
33	welding equipment		2					1									1					1	1	1	7	welding equipment
21	crane	2	4	4	1	3	1	2	2	2	3	1	3	4		4		1	1		1	5	1		45	crane

34	kiln, caldron			2	2	3	1	3	1	1	1	1	3	1	1	1		6	1	1	1	1	1		32	kiln, caldron	
35	electric equipment					1	2	1						1	1	1					2				9	electric equipment	
14	construction machine	1		1						1				1											4	construction machine	
11	engine		1	1												1									3	engine	
31	pressure vessel		1							2															3	pressure vessel	
99	unclassifiable	1																1		1					3	unclassifiable	
32	chemical facilities					1																			1	chemical facilities	
17	mobile silviculture machine																										mobile silviculture machine
	total	182	183	171	151	182	182	150	151	151	136	103	110	126	117	118	99	108	96	109	100	102	97	113	3,037	total	

Transition of fatal and non-fatal accidents in small causal agents in code no. 010902 glass products (1999-2021)

code	Causal (S) agents	1999	2000	2001	2002	2003	2004	2005	2006	2007	2008	2009	2010	2011	2012	2013	2014	2015	2016	2017	2018	2019	2020	2021	total	Causal (S) agents	
529	other materials			32		36		31	32	25	26	14	18	26	22	18	11	11	11	12	14	15	11	21	386	other materials	
417	passage			15		6		5	6	9	9	10	5	6	5	4	5	12	5	8	10	5	6	12	143	passage	
611	load			7		11		10	9	12	7	4	10	4	6	6	3	1	5	3	3	4	4	10	119	load	
921	no causal agent			3		5		4	4	4	3	7	2	2	7	7	2	3	9	5	2	8	7	10	94	no causal agent	
169	other general power machines			24		25		15	21	17	20	10	9	16	17	18	13	19	13	13	12	8	8	9	287	other general power machines	
224	conveyor			14		8		4	9	6	3	3	1	7	1	5	4	3	5	1	4	6	2	7	93	conveyor	
	human power																										human power

362	hauling equipment			2		7		6	10	8	3	3	7	3	7	7	4	3	6	8	5	3	11	5	108	hauling equipment
416	working platform, boot board			4		2		6	3	2	1	2	2	1	4	2		1	1	5	2	1	4	4	47	working platform, boot board
413	stairs, landing stage			5		4		5	6	3	5	3	10	6	4	2	4	3	3	6	1	6	5	3	84	stairs, landing stage
222	forklift			3		7		8	7	3	3	7	6	3	1	4	2	3	4	6	5	2	2	3	79	forklift
391	other equipment, facilities			5		5		5	3	5	4	5	3	4	1	1	4	2	2	4	2	1	2	3	61	other equipment, facilities
911	other causal agent			2						5	2	1			1		1	1		2	3	1		3	22	other causal agent
229	other powered conveying machines			1				1					2	2						1	2	3		3	15	other powered conveying machines
379	other tools			5		10		6	5	6	3	9	3	10	10	5	4	4	1	7	4	7	4	2	105	other tools
131	circular sawing machine			1									1											2	6	circular sawing machine
371	ladder			3		5		5	6	6	4	2	3	3	6	3	7	5	3	5	4	4	8	1	83	ladder
221	truck			2		6		2		4	4	2	4	2	1	2	3	7	5	2	4	10	1	1	62	truck
364	hand tool			1		4		2	4	3	2	2	1	7		4	3	1	4		4	1	2	1	46	hand tool
521	metal material			5		3		5	3	1	4	3	1	2	2		2	2			1	1	3	1	39	metal material
418	building, establishment			2		4		2	2	3	4	1	1	1		2	5	1	3	3	1	1	1	1	38	building, establishment
121	power transmission mechanism			4		2		1	1	2	1	3	1	3	3	4	1	2	1	1	1	1	2	1	35	power transmission mechanism
419	other temporary buildings, establishments			2		2		4	2	2	1	2	1	1	2	2	3	1	2	1	2			1	31	other temporary buildings, establishments

231	cars, bus, motorcycle			2		1				3	1	4		1		1	2	3	2		2	1		1	1	25	cars, bus, motorcycle
719	other environments			1							1	1			1	4	1	2		1	2	3			1	18	other environments
162	mixer, grinder			2		1		2	1				1		1	1	1		1	1			1	1	14	mixer, grinder	
411	scaffolding			1		4					1	1						1						1	9	scaffolding	
166	printing machine					1							1		1						1		1	1	6	printing machine	
512	inflammable substance			1				1					1	1			1							1	6	inflammable substance	
164	injection molding machine							1							1				1	1				1	5	injection molding machine	
152	drill press, milling machine										1	1			1									1	4	drill press, milling machine	
331	gas welding equipment							1								1						1		1	4	gas welding equipment	
163	roll machine (except printingroll machine)					4		1	3	5	5	1	3	2	1	4	2	1	3	1					36	roll machine (except printingroll machine)	
341	kiln, caldron			2		3		3	1	1	1	1	2	1	1	1		6	1	1	1	1			27	kiln, caldron	
211	crane			3		3		1	1	2	2		2	4				1	1			4	1		25	crane	
514	harmful substance			1		2			1	3	1	1	1	2				2	1	2	1				18	harmful substance	
715	high/cold temperature environment			2		1		2						1	1			1	1	1	1		1	2	16	high/cold temperature environment	
159	other metal manufacturing									2	2	2	3	2									1	1	15	other metal manufacturing	

361	cranes				2														1			3	cranes	
111	engine			1										1									2	engine
212	mobile crane							1						1									2	mobile crane
225	loader							1		1													2	loader
239	other vehicles													1		1							2	other vehicles
351	transmission							1													1		2	transmission
352	electric power facilities																						2	electric power facilities
713	water																						2	water
999	unclassifiable																						2	unclassifiable
133	wood planer machine																						1	wood planer machine
139	other woodworking machines																						1	other woodworking machines
141	leveling, transporting or loading machine																						1	leveling, transporting or loading machine
142	excavating machine																						1	excavating machine
149	other construction machines																						1	other construction machines
161	centrifugal machine																						1	centrifugal machine
311	boiler																						1	boiler
312	pressure vessel																						1	pressure vessel
332	arc welding																						1	arc welding

	falling object																									or falling object
03	crash	6	11	15	6	6	6	6	3	8	2	7	9	6	4	9	4	7	3	3	5	5	3	6	140	crash
06	crashed by	3	2	7	9	12	11	8	12	8	3	6	2	5	7	3	3	3	3	2	6	5	4	4	128	crashed by
11	contact to high/low-temperature	7	2	7	4	10	5	10	1	3	5	4	3	3	6	5	3	4	1	3	1	3	6	3	99	contact to high/low-temperature
90	others				1					2		1		1						1		1		1	8	others
99	unclassifiable	1			2								1											1	5	unclassifiable
14	explosion						1						1											1	3	explosion
17	traffic accident (public road)			2	3	1	2		2	1	5		3			2	3	8	1	2	2	7	1		45	traffic accident (public road)
12	contact to harmful substance		1	2	4	5	1		1	2	1	1	2	2			2	3	1	1	1	1			31	contact to harmful substance
16	fire		1	4				1										1		1					8	fire
09	injury to the sole of the foot										1				3	2									6	injury to the sole of the foot
13	electric shock						1		1						1										3	electric shock
15	burst					1										1					1				3	burst
18	traffic accident (others)		1																		1				2	traffic accident (others)
10	drown																									drown
	total	182	183	171	151	182	182	150	151	151	136	103	110	126	117	118	99	108	96	109	100	102	97	113	3,037	total

Transition of fatal and non-fatal accidents in workers ages in code no. 010902 glass products (1999-2021)

code	Age	1999	2000	2001	2002	2003	2004	2005	2006	2007	2008	2009	2010	2011	2012	2013	2014	2015	2016	2017	2018	2019	2020	2021	total	Age
5	50-59	46	46	39	35	40	38	39	29	40	26	22	20	24	26	22	20	25	23	22	19	25	26	29	681	50-59
4	40-49	40	31	31	27	33	34	26	28	31	32	24	27	31	31	33	27	32	26	23	34	25	22	28	676	40-49
3	30-39	34	45	36	38	46	53	35	39	38	37	33	24	27	26	27	37	17	18	29	23	18	27	24	731	30-39
6	60 years old or more	12	11	19	13	7	16	19	12	15	13	10	16	17	10	10	10	17	14	13	14	18	9	18	313	60 years old or more
2	20-29	44	46	41	32	52	35	27	39	23	26	12	22	26	20	23	5	14	14	21	10	13	13	13	571	20-29
1	19 years old or less	6	4	5	6	4	6	4	4	4	2	2	1	1	4	3		3	1	1		3		1	65	19 years old or less
	total	182	183	171	151	182	182	150	151	151	136	103	110	126	117	118	99	108	96	109	100	102	97	113	3,037	total

Transition of fatal and non-fatal accidents in workers scales in code no. 010902 glass products (1999-2021)

code	Workers scale	1999	2000	2001	2002	2003	2004	2005	2006	2007	2008	2009	2010	2011	2012	2013	2014	2015	2016	2017	2018	2019	2020	2021	total	Workers scale
5	100-299	36	37	31	21	32	35	19	33	28	28	29	35	28	21	26	21	29	19	31	40	38	32	32	681	100-299
2	10-29	48	41	49	43	40	39	37	28	31	21	22	12	18	20	23	15	21	20	17	18	10	13	23	609	10-29
4	50-99	31	43	32	21	39	39	41	20	31	32	19	17	39	31	26	21	16	28	28	10	19	18	22	623	50-99
3	30-49	26	14	15	15	19	24	21	28	23	19	14	18	19	20	15	16	19	12	12	18	18	13	13	411	30-49
6	300 workers or more	21	24	25	21	19	13	10	18	16	17	9	17	11	16	18	17	14	12	11	6	12	11	12	350	300 workers or more
1	9 workers or less	20	24	19	30	33	32	22	24	22	19	10	11	11	9	10	9	9	5	10	8	5	10	11	363	9 workers or less
	total	182	183	171	151	182	182	150	151	151	136	103	110	126	117	118	99	108	96	109	100	102	97	113	3,037	total

Transition of fatal and non-fatal accidents in months in code no. 010902 glass products (1999-2021)

code	Month	1999	2000	2001	2002	2003	2004	2005	2006	2007	2008	2009	2010	2011	2012	2013	2014	2015	2016	2017	2018	2019	2020	2021	total	Month
3	March	18	19	22	9	15	12	20	12	7	3	11	6	10	10	11	8	6	4	15	16	9	9	14	266	March

8	August	18	19	11	13	21	14	16	18	11	11	8	9	11	12	10	6	11	8	10	7	7	6	13	270	August
1	January	9	13	15	5	8	17	11	17	8	20	7	15	9	6	6	8	16	9	13	11	7	7	12	249	January
10	October	14	13	13	9	15	13	14	14	15	11	8	11	5	12	10	7	9	13	7	11	7	5	11	247	October
11	November	15	13	17	19	11	15	12	10	11	6	6	8	15	5	10	2	12	10	6	7	6	6	11	233	November
5	May	18	16	10	13	15	12	9	9	13	18	11	11	8	6	14	7	8	8	11	7	7	11	10	252	May
12	December	14	15	8	12	12	12	9	13	13	10	7	4	14	11	7	10	6	10	9	7	8	8	10	229	December
7	July	17	17	24	19	22	15	14	15	19	17	13	12	11	10	8	9	11	7	9	8	10	13	9	309	July
4	April	17	12	6	8	14	13	15	13	8	9	5	5	12	10	8	6	11	6	5	6	9	4	8	210	April
6	June	14	20	14	13	19	30	7	9	20	10	9	11	14	11	12	11	7	7	9	7	10	7	6	277	June
9	September	17	17	22	18	20	19	14	10	8	12	8	8	6	11	9	16	7	8	7	6	14	10	5	272	September
2	February	11	9	9	13	10	10	9	11	18	9	10	10	11	13	13	9	4	6	8	7	8	11	4	223	February
	total	182	183	171	151	182	182	150	151	151	136	103	110	126	117	118	99	108	96	109	100	102	97	113	3,037	total

Transition of fatal and non-fatal accidents in prefectures in code no. 010902 glass products (1999-2021)

code	Prefecture	1999	2000	2001	2002	2003	2004	2005	2006	2007	2008	2009	2010	2011	2012	2013	2014	2015	2016	2017	2018	2019	2020	2021	total	Prefecture
11	Saitama	12	10	11		12		5	5	8	3	3	9	6	3	1	5	5	5	8	7	11	4	14	147	Saitama
13	Tokyo	7	14	11		12		10	7	3	9	7	8	9	8	4	3	7	6	9	9	9	3	9	164	Tokyo
7	Fukushima	6	6	2		6		3	6	1	6	5	2	4	3	3	5	4	4	5	3	3	9	9	95	Fukushima
24	Mie	10	13	9		13		12	9	13	10	4	1	6	10	10	9	6	4	6	5	4	2	8	164	Mie
12	Chiba	8	7	10		13		3	12	9	7	6	8	14	8	8	7	8	12	10	8	8	7	7	180	Chiba
28	Hyogo	10	13	5		10		13	8	7	8	8	4	2	2	10	5	5	2	6	9	4	7	6	144	Hyogo
16	Toyama	4	8			3		7	9	5	1	2	1	11	6	7	5	7	5	5	2	6	4	6	104	Toyama
14	Kanagawa	12	17	14		18		20	17	14	14	8	12	7	9	7	14	8	5	7	2	3	5	5	218	Kanagawa
23	Aichi	6	6	8		6		7	5	8	5	3	5	13	6	4	9	11	9	7	8	7	5	5	143	Aichi

45	Miyazaki	3	1							2	1	1				1		1	1		1	3	5	20	Miyazaki	
25	Shiga	12	8	14		8		10	11	16	3	4	16	7	17	13	10	14	7	8	5	12	6	4	205	Shiga
22	Shizuoka	6	6	10		7		3	5	3	9	1	4	1	5	4	3	1	1	2	1	6	2	4	84	Shizuoka
8	Ibaraki	6	5	13		3		3	3	9	6	5	7	5	3	3	6	2	3	4	6	6	5	3	106	Ibaraki
40	Fukuoka	9	14	8		3		7	9	4	6	3		2	5	3	1	4	3	2	4	1	3	3	94	Fukuoka
6	Yamagata	4	2	7		1			2	2	2			2	3	5		1	2	2	4	1	2	3	45	Yamagata
36	Tokushima	2		1		2				1		2		1		1			1			1		3	15	Tokushima
27	Osaka	19	25	12		19		9	7	8	12	14	9	15	10	3	3	6	4	12	2	4	6	2	201	Osaka
41	Saga	1	3	1		2		1	2				3		3	2	1	1	2	2	2	1	1	2	30	Saga
9	Tochigi	5	2	1		1		1	1	2		1		3		1			1	2	1		1	2	25	Tochigi
5	Akita										1	1	1	2		2	1	1	2	2	3	1	2	2	21	Akita
43	Kumamoto	1	1			1		1		1		3		1					2		1			2	14	Kumamoto
21	Gifu	6	4	2		8		6	5	8	5	3	4	3	3	3	1	3	5	2	4	2	5	1	83	Gifu
26	Kyoto	5	7	3		6		2	2	3	2	4		1	2	4	1	1	2	2		2	2	1	52	Kyoto
4	Miyagi	6		4		4		3	8	5	3	4		1	1	2	2		3	1	1			1	49	Miyagi
15	Niigata	2	2	1				1	2	3		2		1	2		1	1	2	1	3		1	1	26	Niigata
20	Nagano	3	1	1					1	1	4		3	2		1	1	2		1	2		1	1	25	Nagano
3	Iwate	3	1	1		2		4	2		1				1	1	1	2						1	20	Iwate
34	Hiroshima		1					2		1	2									1	1	2		1	11	Hiroshima
30	Wakayama								1	1	1		1			1		1						1	7	Wakayama
32	Shimane		1	2										1				2						1	7	Shimane
10	Gunma	5	1	4		4		4	4	4	2	1	3	2	1	6	1	1	1			4	1		49	Gunma
1	Hokkaido	3		7		3		2	2	3	1	2		1	2	1	1		1		3		2		34	Hokkaido

18	Fukui	2	1	5		4		3	3	4	4	2	2			1		1						1				33	Fukui
33	Okayama			1		1		1	1		3		2		1		1				3	2	4					20	Okayama
35	Yamaguchi	1	2	1		2		3		3		1					1		1			1						16	Yamaguchi
19	Yamanashi			2		1			1		3			1	1	2		1										13	Yamanashi
46	Kagoshima	2	1			2					1	2	1	2														11	Kagoshima
29	Nara					1		1	1	1			1		1	2												8	Nara
47	Okinawa					2		1				1			1	2												7	Okinawa
42	Nagasaki	1				1							1			1			1									5	Nagasaki
17	Ishikawa							1					1					1										4	Ishikawa
37	Kagawa					1											1				1							3	Kagawa
2	Aomori							1																				2	Aomori
31	Tottori																												Tottori
38	Ehime																												Ehime
39	Kochi																												Kochi
44	Oita																												Oita
	total	182	183	171		182		150	151	151	136	103	110	126	117	118	99	108	96	109	100	102	97	113	2,704		total		

Data source : <https://anzeninfo.mhlw.go.jp/user/anzen/tok/anst00.htm>

Return to https://www.jisha.or.jp/english/statistics/202211_23.html