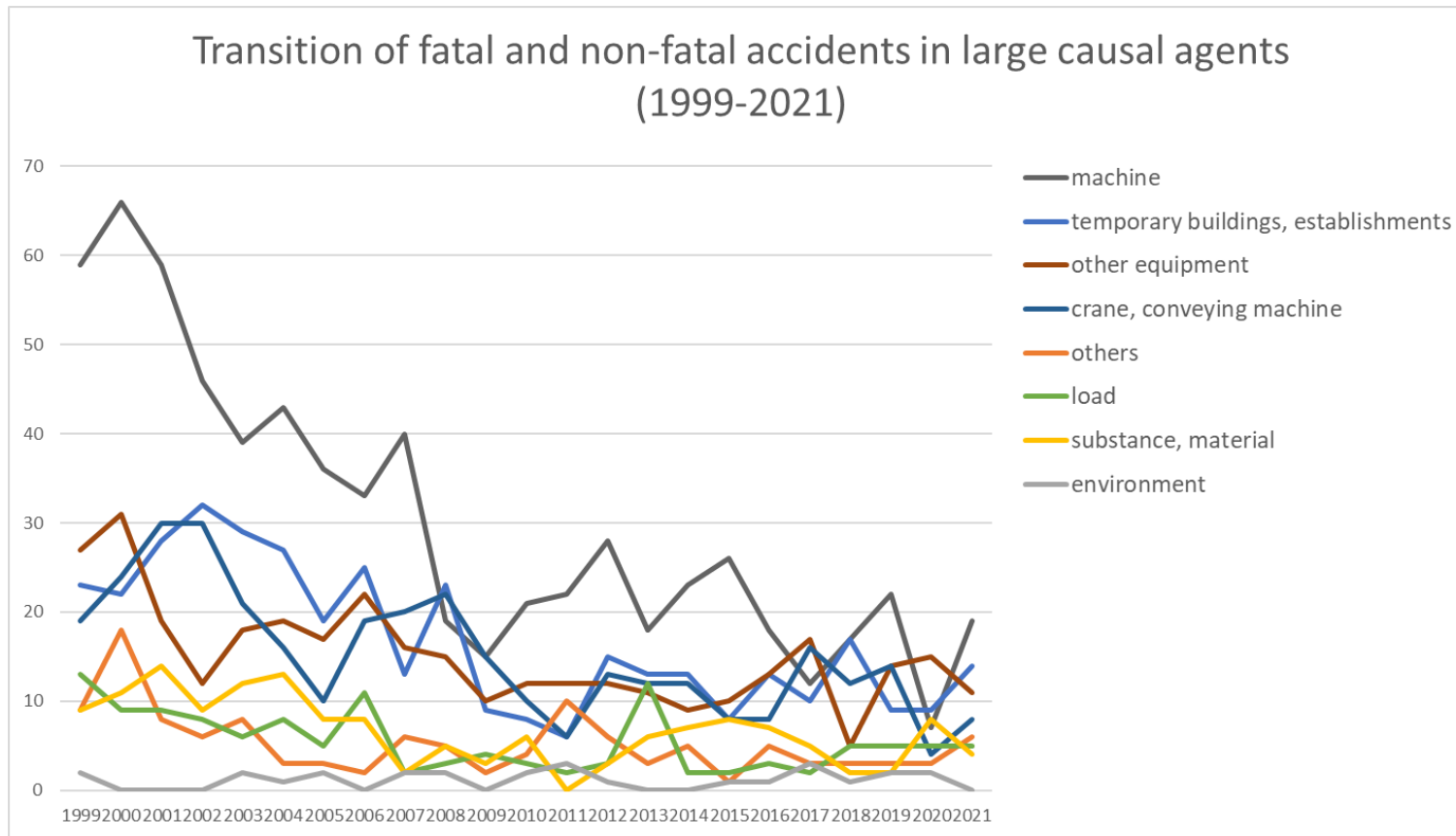
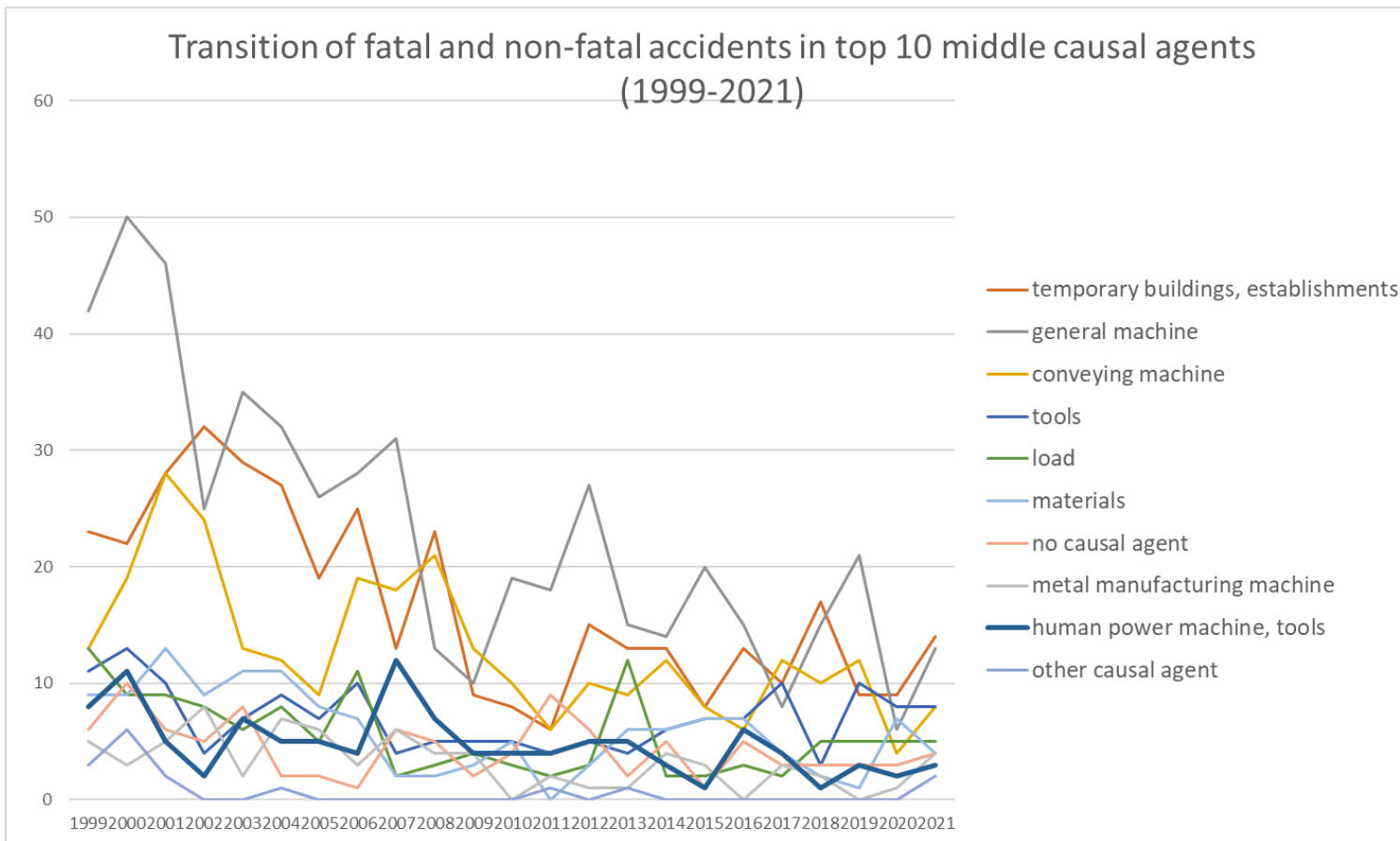


Transition of fatal and non-fatal accidents in each element like as causal agents, type of accidents, etc. in code no. 010903 pottery products (1999-2021)



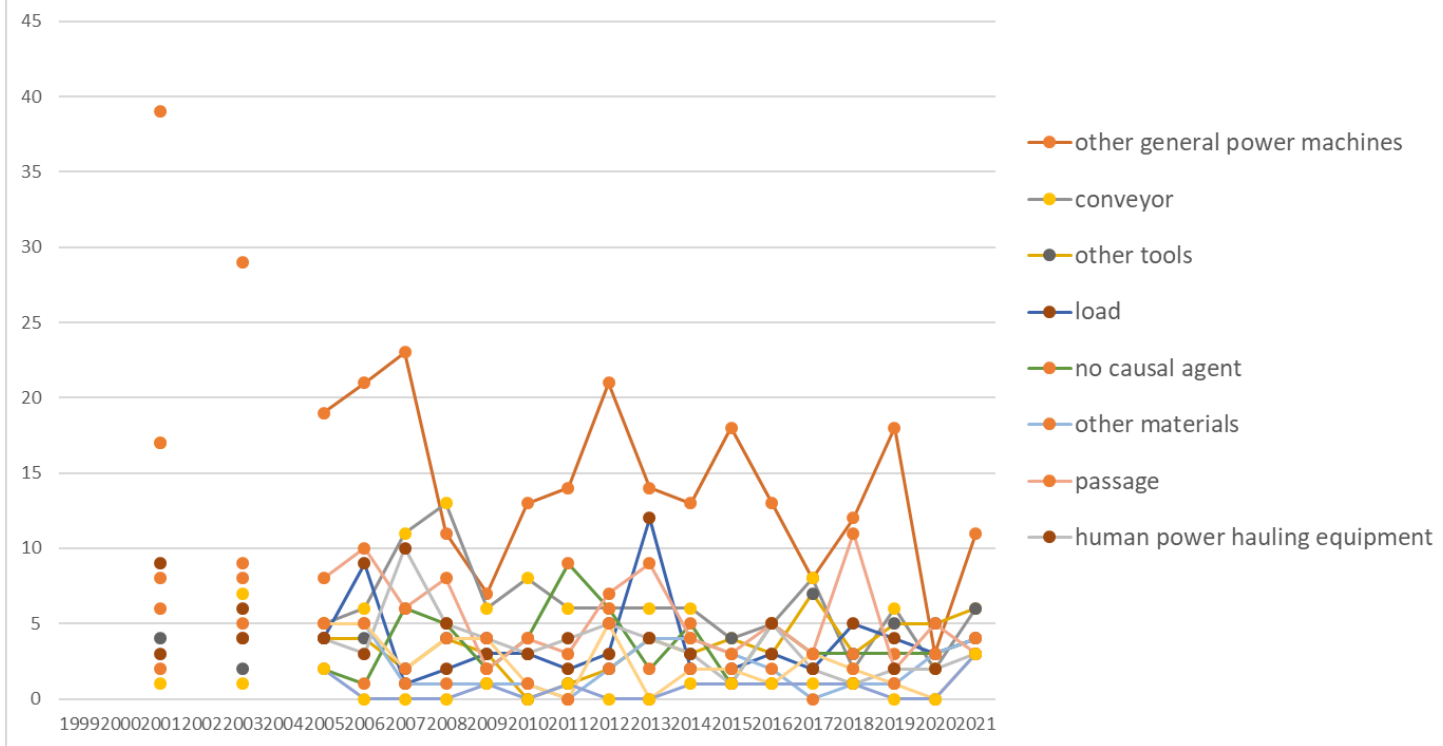
Transition of fatal and non-fatal accidents in large causal agents in code no. 010903 pottery products (1999-2021)

Transition of fatal and non-fatal accidents in top 10 middle causal agents (1999-2021)



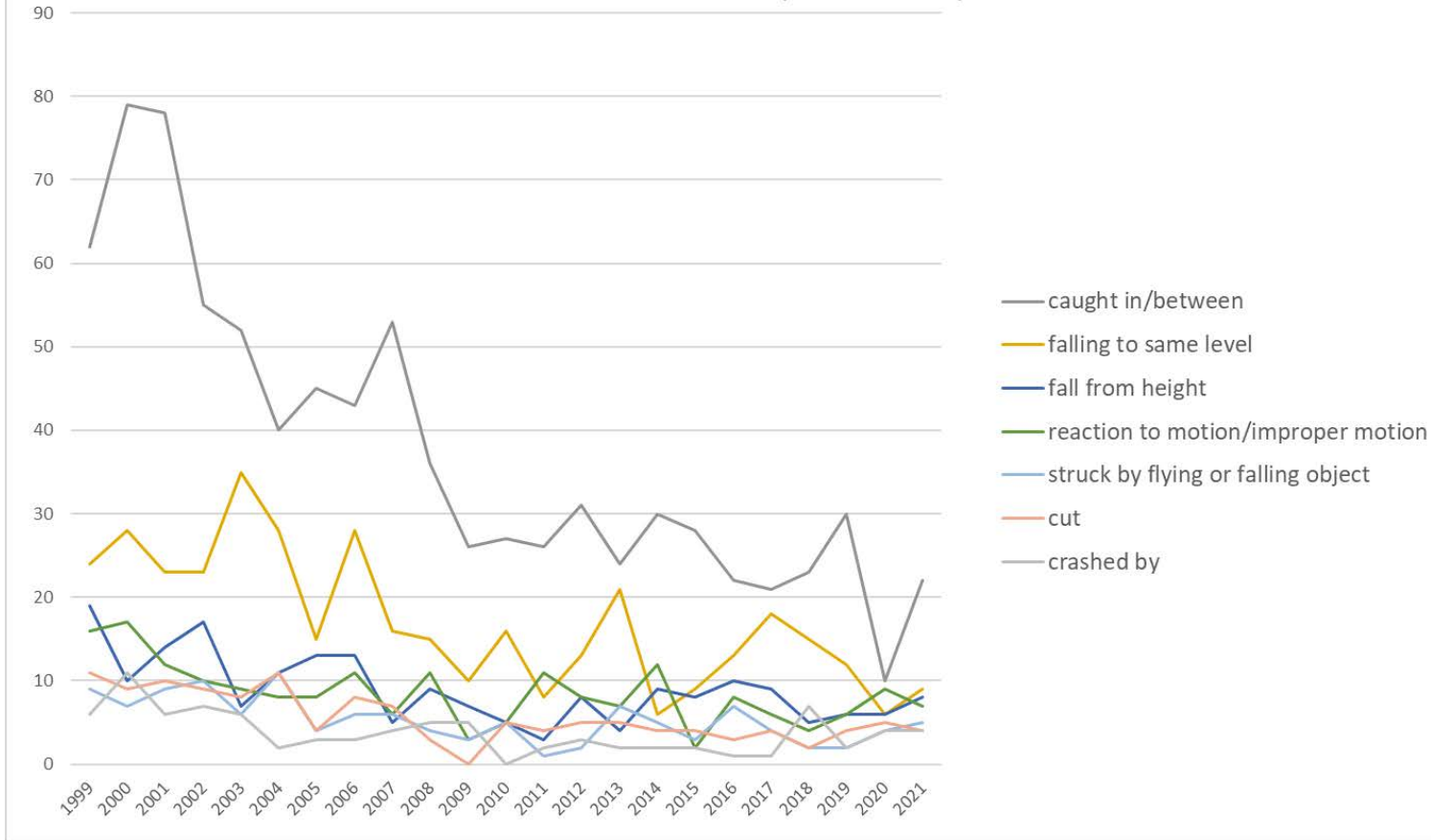
Transition of fatal and non-fatal accidents in middle causal agents in code no. 010903 pottery products (1999-2021)

Transition of fatal and non-fatal accidents in top 10 small causal agents (1999-2021)



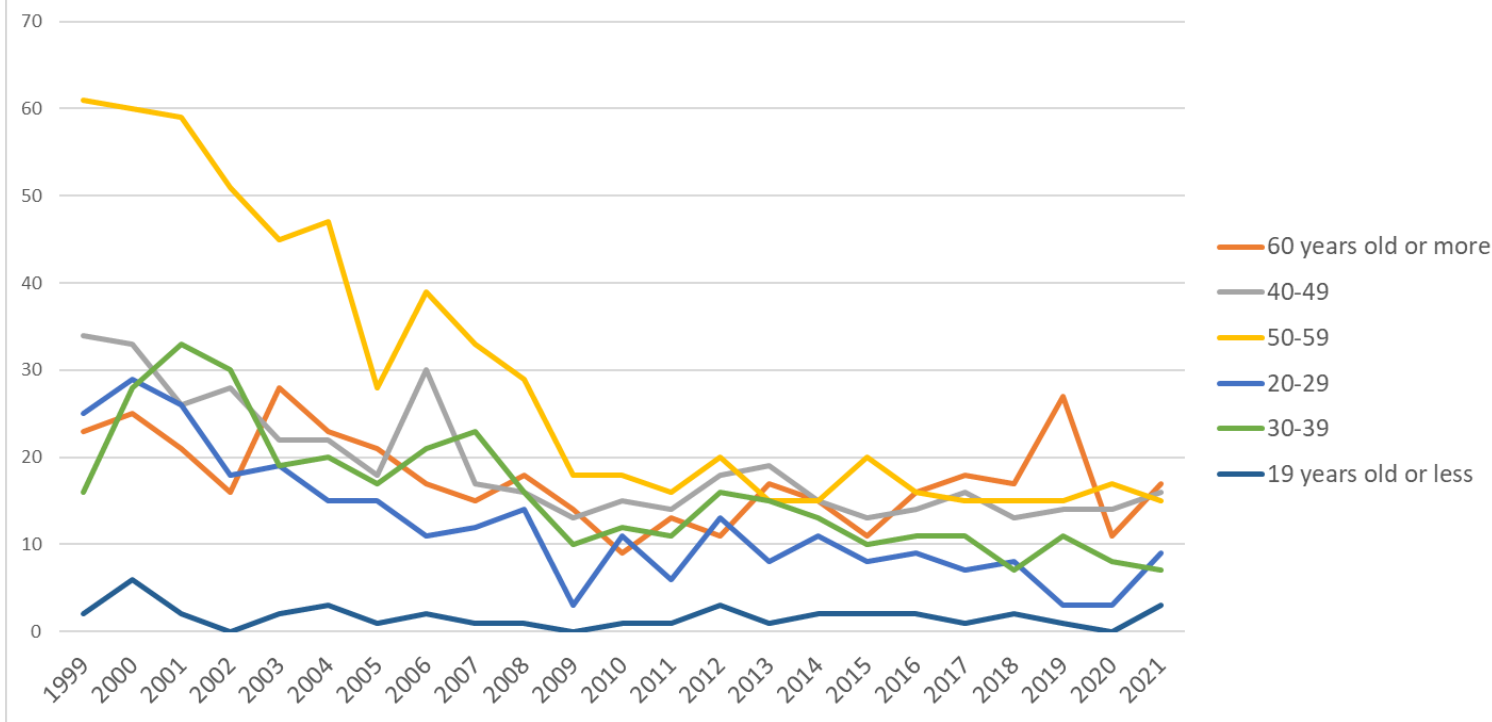
Transition of fatal and non-fatal accidents in small causal agents in code no. 010903 pottery products (1999-2021)

Transition of fatal and non-fatal accidents in top 7 type of accidents
(1999-2021)



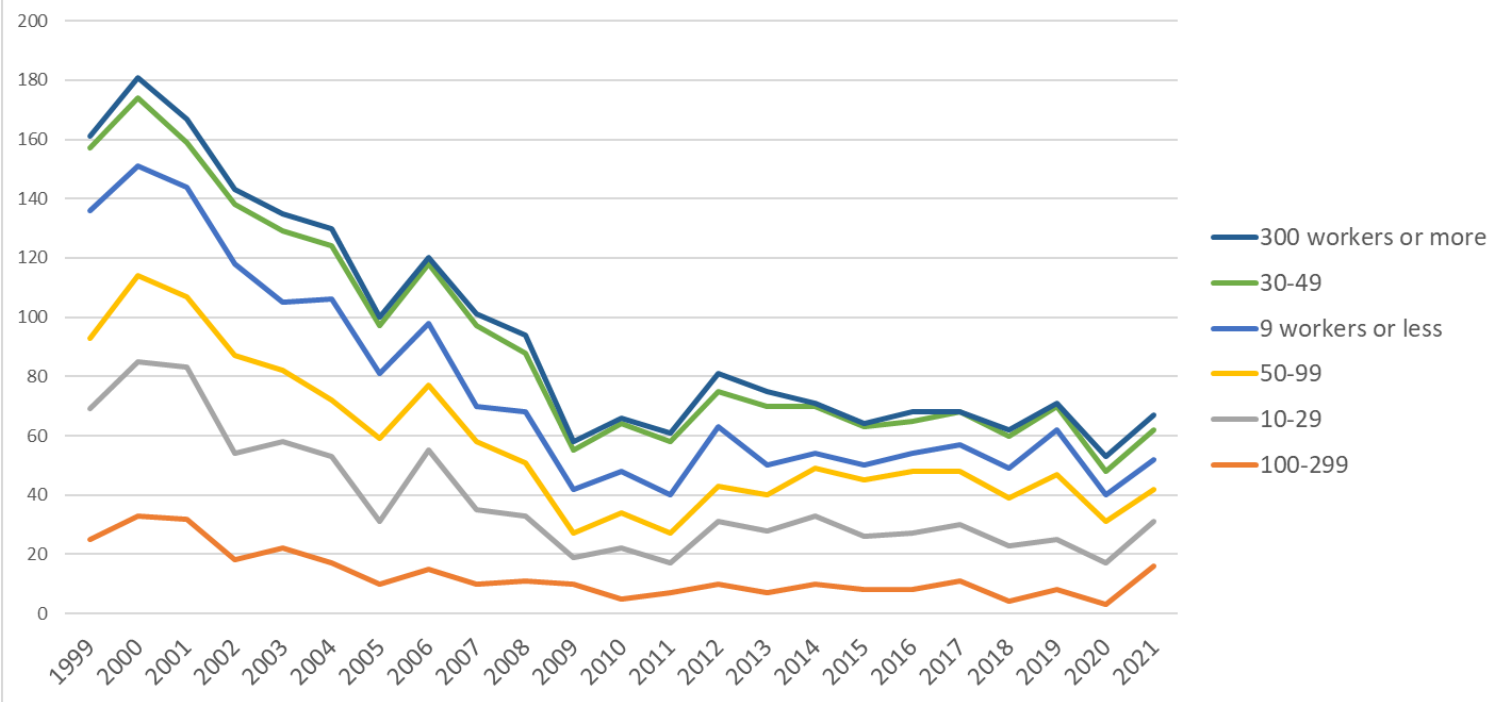
Transition of fatal and non-fatal accidents in type of accidents in code no. 010903 pottery products (1999-2021)

Transition of fatal and non-fatal accidents in workers ages (1999-2021)



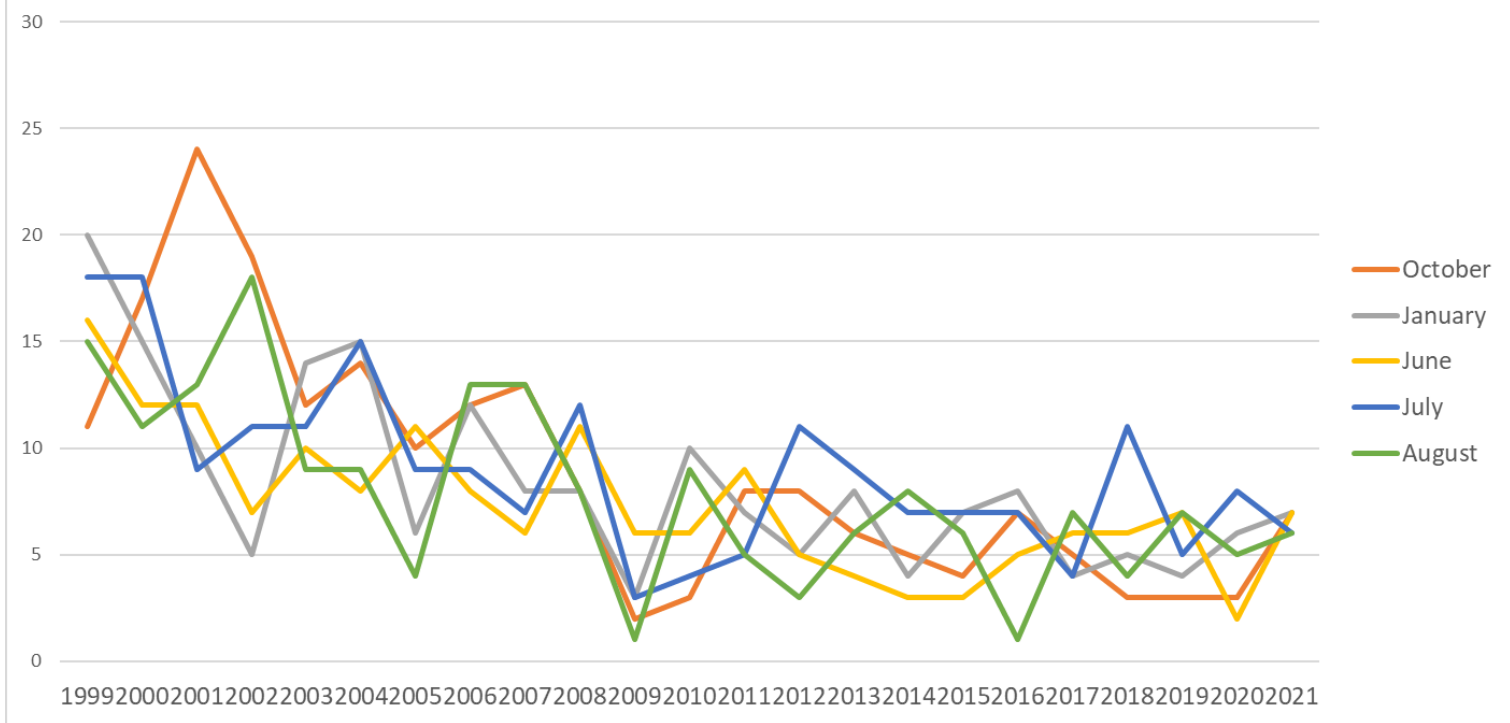
Transition of fatal and non-fatal accidents in workers ages in code no. 010903 pottery products (1999-2021)

Transition of fatal and non-fatal accidents in workers scales (1999-2021)

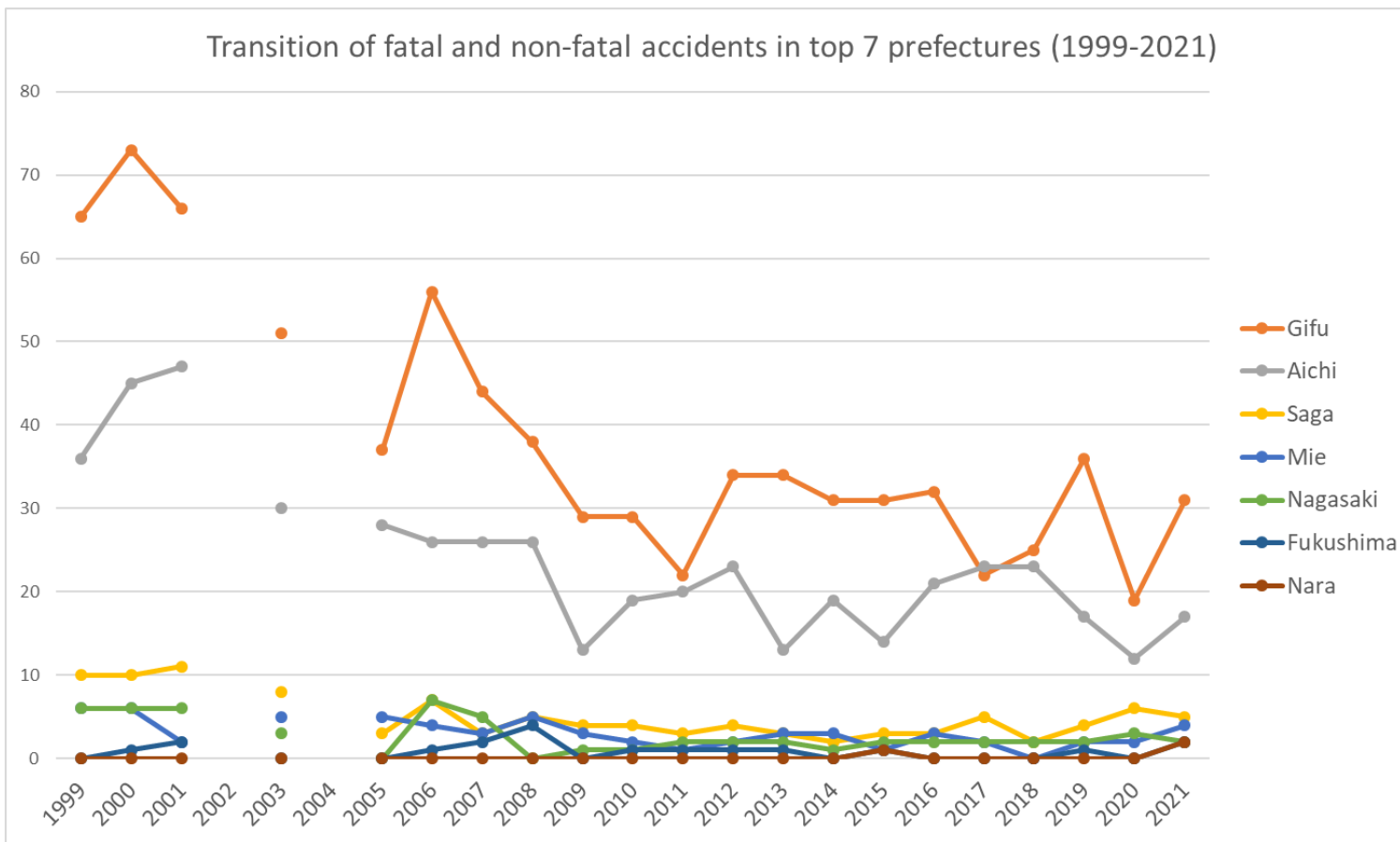


Transition of fatal and non-fatal accidents in workers scales in code no. 010903 pottery products (1999-2021)

Transition of fatal and non-fatal accidents in top 5 months (1999-2021)



Transition of fatal and non-fatal accidents in months in code no. 010903 pottery products (1999-2021)



Transition of fatal and non-fatal accidents in prefectures in code no. 010903 pottery products (1999-2021)

Transition of fatal and non-fatal accidents in large causal agents in code no. 010903 pottery products (1999-2021)

code	Causal (L) agents	1999	2000	2001	2002	2003	2004	2005	2006	2007	2008	2009	2010	2011	2012	2013	2014	2015	2016	2017	2018	2019	2020	2021	total	Causal (L) agents
1	machine	59	66	59	46	39	43	36	33	40	19	15	21	22	28	18	23	26	18	12	17	22	7	19	688	machine
4	temporary buildings, establishments	23	22	28	32	29	27	19	25	13	23	9	8	6	15	13	13	8	13	10	17	9	9	14	385	temporary buildings, establishments
3	other equipment	27	31	19	12	18	19	17	22	16	15	10	12	12	12	11	9	10	13	17	5	14	15	11	347	other

92	no causal agent	6	10	6	5	8	2	2	1	6	5	2	4	9	6	2	5	1	5	3	3	3	3	3	4	101	agent
15	metal manufacturing machine	5	3	5	8	2	7	6	3	6	4	4		2	1	1	4	3		3	2			1	4	74	metal manufacturing machine
36	human power machine, tools	8	11	5	2	7	5	5	4	12	7	4	4	4	5	5	3	1	6	4	1	3	2	3	3	111	human power machine, tools
91	other causal agent	3	6	2			1							1		1									2	16	other causal agent
12	power transmission mechanism	10	12	6	10	1	2	2	1	3	2	1	1			2	4	2							1	60	power transmission mechanism
14	construction machine	1			1		1												1						1	5	construction machine
39	other equipments, facilities	7	5	1	6	3	3	3	8		2	1	2	2	1	1		2		2	1	1	5			56	other equipments, facilities
21	crane	4	3	1	4	3	1	1		1		1			1	3			1	4	2	1				31	crane
71	natural environment	2				2	1	2		2	2		2	3	1			1	1	3	1	2	2			27	natural environment
23	vehicle	2	2	1	2	5	3			1	1	1			2				1			1				22	vehicle
13	woodworking machine	1	1	2	2	1	1	2	1				1	2			1	1	2	1		1				20	woodworking machine
51	hazards, harmful substances		2	1		1	2		1				3		1			1	1		1		1	1		16	hazards, harmful substances

34	kiln, caldron		1	2		1	2	2			1		1	2		1									13	kiln, caldron
99	unclassifiable		2		1			1	1																5	unclassifiable
35	electric equipment	1	1											1											4	electric equipment
33	welding equipment			1																					1	welding equipment
11	engine																									engine
17	mobile silviculture machine																									mobile silviculture machine
31	pressure vessel																									pressure vessel
32	chemical facilities																									chemical facilities
	total	161	181	167	143	135	130	100	120	101	94	58	66	61	81	75	71	64	68	68	62	71	53	67	2,197	total

Transition of fatal and non-fatal accidents in small causal agents in code no. 010903 pottery products (1999-2021)

code	Causal (S) agents	1999	2000	2001	2002	2003	2004	2005	2006	2007	2008	2009	2010	2011	2012	2013	2014	2015	2016	2017	2018	2019	2020	2021	total	Causal (S) agents
169	other general power machines			39		29		19	21	23	11	7	13	14	21	14	13	18	13	8	12	18	3	11	307	other general power machines
224	conveyor			17		7		5	6	11	13	6	8	6	6	6	4	5	8	2	6	2	6		130	conveyor
379	other tools			4		2		4	4	2	4	3		1	2	4	3	4	3	7	3	5	5	6	66	other tools
611	load			9		6		4	9	1	2	3	3	2	3	12	2	2	3	2	5	4	3	4	79	load
921	no causal agent			6		8		2	1	6	5	2	4	9	6	2	5	1	5	3	3	3	3	4	78	no causal agent
529	other materials			8		4		5	5	1	1	1	1		2	4	4	3	2		1	1	3	4	50	other materials

417	passage			17		9		8	10	6	8	2	4	3	7	9	4	3	5	3	11	2	5	3	119	passage
362	human power hauling equipment			3		4		4	3	10	5	4	3	4	5	4	3	1	5	2	1	2	2	3	68	human power hauling equipment
413	stairs, landing stage			2		5		5	5	2	4	4	1		5		2	2	1	3	2	1		3	47	stairs, landing stage
415	roof, beam, haze, crossbeam, principal rafter			1		1		2									1	1	1	1	1			3	14	roof, beam, haze, crossbeam, principal rafter
159	other metal manufacturing machines			1		1		1									1	1						3	9	other metal manufacturing machines
418	building, establishment			1		2		1	4	2	6		1	1	2		3	1	1	1	2	2	2	2	34	building, establishment
419	other temporary buildings, establishments			2		2		2	4		2	1					2	1	1	1	1	1	2	2	24	other temporary buildings, establishments
911	other causal agent			2									1		1									2	6	other causal agent
371	ladder			5		3		3	6	1	1	2	4	3	3		3	3	4	3		5	3	1	53	ladder
416	working platform, boot board			5		9		1	2	2	3	1	2	1	1	3	1		4	1		3		1	40	working platform, boot board
222	forklift			1		3		1	3	2	6	3	1		2	3	3		1	3	2	3	1	1	39	forklift
229	other powered conveying machines			7		1		2	6	3	1	3					1	4		1	6	2	1	1	39	other powered conveying machines
121	power transmission mechanism			6		1		2	1	3	2	1	1			2	4	2						1	26	power transmission mechanism
164	injection molding			2						1			2	3	1	1		2	1				2	1	16	injection molding

523	stone, sand, substance			1		2		1	1		1	1					1			1					9	stone, sand, substance
715	high/cold temperature environment									1	2						1		1			2	2		9	high/cold temperature environment
131	circular sawing machine			1		1		1					1			1	1	1				1			8	circular sawing machine
719	other environments					1		1				1	2				1	2							8	other environments
211	crane			1							1								2	2	1				7	crane
341	kiln, caldron			2				1				1	2		1										7	kiln, caldron
166	printing machine					2						1		1								1	1		6	printing machine
223	railway equipment			1				1	2							1									5	railway equipment
139	other woodworking machines			1					1									1							4	other woodworking machines
519	other hazards, harmful substances			1					1													1	1		4	other hazards, harmful substances
711	natural ground, rock							1		1			1	1											4	natural ground, rock
513	inflammable gas					1					2														3	inflammable gas
136	chain saw												1									1			2	chain saw
219	other powered crane								1														1		2	other powered crane
225	loader			1												1									2	loader
342	industrial dryer					1					1														2	industrial dryer

06	crashed by	6	11	6	7	6	2	3	3	4	5	5		2	3	2	2	2	1	1	7	2	4	4	88	crashed by
03	crash	7	8	7	5	2	4	3	6	2	4	1		3	6	3	2	4	1	1	3	5	5	3	85	crash
09	injury to the sole of the foot			2	1	1									1		1							2	8	injury to the sole of the foot
90	others			2			1	1																2	6	others
05	collapse	3	2	2	2	2	4	1	1		2		1	2		1		1	1		1			1	27	collapse
11	contact to high/low-temperature	2	6	2	3	2	3	2		1	2	1			1			3		3		2	3		36	contact to high/low-temperature
17	traffic accident (public road)	2	1			5	2					1	1		2					2		1			17	traffic accident (public road)
12	contact to harmful substance						2		1					1						1		1	1		7	contact to harmful substance
13	electric shock				1					1		1			1										4	electric shock
16	fire		1								2		1												4	fire
18	traffic accident (others)						3																		3	traffic accident (others)
15	burst		1								1														2	burst
99	unclassifiable		1					1																	2	unclassifiable
14	explosion																1								1	explosion
10	drown																									drown
	total	161	181	167	143	135	130	100	120	101	94	58	66	61	81	75	71	64	68	68	62	71	53	67	2,197	total

Transition of fatal and non-fatal accidents in workers ages in code no. 010903 pottery products (1999-2021)

code	Age	1999	2000	2001	2002	2003	2004	2005	2006	2007	2008	2009	2010	2011	2012	2013	2014	2015	2016	2017	2018	2019	2020	2021	total	Age
6	60 years old or more	23	25	21	16	28	23	21	17	15	18	14	9	13	11	17	15	11	16	18	17	27	11	17	403	60 years old or more
4	40-49	34	33	26	28	22	22	18	30	17	16	13	15	14	18	19	15	13	14	16	13	14	14	16	440	40-49
5	50-59	61	60	59	51	45	47	28	39	33	29	18	18	16	20	15	15	20	16	15	15	15	17	15	667	50-59
2	20-29	25	29	26	18	19	15	15	11	12	14	3	11	6	13	8	11	8	9	7	8	3	3	9	283	20-29
3	30-39	16	28	33	30	19	20	17	21	23	16	10	12	11	16	15	13	10	11	11	7	11	8	7	365	30-39
1	19 years old or less	2	6	2		2	3	1	2	1	1		1	1	3	1	2	2	2	1	2	1		3	39	19 years old or less
	total	161	181	167	143	135	130	100	120	101	94	58	66	61	81	75	71	64	68	68	62	71	53	67	2,197	total

Transition of fatal and non-fatal accidents in workers scales in code no. 010903 pottery products (1999-2021)

code	Workers scale	1999	2000	2001	2002	2003	2004	2005	2006	2007	2008	2009	2010	2011	2012	2013	2014	2015	2016	2017	2018	2019	2020	2021	total	Workers scale
5	100-299	25	33	32	18	22	17	10	15	10	11	10	5	7	10	7	10	8	8	11	4	8	3	16	300	100-299
2	10-29	44	52	51	36	36	36	21	40	25	22	9	17	10	21	21	23	18	19	19	19	17	14	15	585	10-29
4	50-99	24	29	24	33	24	19	28	22	23	18	8	12	10	12	12	16	19	21	18	16	22	14	11	435	50-99
1	9 workers or less	43	37	37	31	23	34	22	21	12	17	15	14	13	20	10	5	5	6	9	10	15	9	10	418	9 workers or less
3	30-49	21	23	15	20	24	18	16	20	27	20	13	16	18	12	20	16	13	11	11	11	8	8	10	371	30-49
6	300 workers or more	4	7	8	5	6	6	3	2	4	6	3	2	3	6	5	1	1	3		2	1	5	5	88	300 workers or more
	total	161	181	167	143	135	130	100	120	101	94	58	66	61	81	75	71	64	68	68	62	71	53	67	2,197	total

Transition of fatal and non-fatal accidents in months in code no. 010903 pottery products (1999-2021)

code	Month	1999	2000	2001	2002	2003	2004	2005	2006	2007	2008	2009	2010	2011	2012	2013	2014	2015	2016	2017	2018	2019	2020	2021	total	Month
10	October	11	17	24	19	12	14	10	12	13	8	2	3	8	8	6	5	4	7	5	3	3	3	7	204	October

1	January	20	15	10	5	14	15	6	12	8	8	3	10	7	5	8	4	7	8	4	5	4	6	7	191	January
6	June	16	12	12	7	10	8	11	8	6	11	6	6	9	5	4	3	3	5	6	6	7	2	7	170	June
7	July	18	18	9	11	11	15	9	9	7	12	3	4	5	11	9	7	7	7	4	11	5	8	6	206	July
8	August	15	11	13	18	9	9	4	13	13	8	1	9	5	3	6	8	6	1	7	4	7	5	6	181	August
12	December	11	15	14	11	6	5	6	5	5	5	5	6	3	6	8	5	5	4	6	5	5	2	6	149	December
3	March	16	16	17	14	15	16	9	13	5	6	9	6	7	6	3	5	6	4	7	4	6	3	5	198	March
4	April	11	12	15	17	12	14	10	10	11	13	5	4	4	8	8	5	6	5	4	4	6	7	5	196	April
5	May	6	13	21	11	7	9	7	11	10	1	6	10	5	6	5	10	4	3	4	3	7	8	5	172	May
9	September	14	14	8	6	11	6	8	10	11	4	6	3	6	7	5	5	5	8	6	4	5	2	5	159	September
2	February	8	25	13	12	15	7	12	10	2	13	6	1	2	11	6	9	5	9	8	6	9	2	4	195	February
11	November	15	13	11	12	13	12	8	7	10	5	6	4		5	7	5	6	7	7	7	7	5	4	176	November
	total	161	181	167	143	135	130	100	120	101	94	58	66	61	81	75	71	64	68	68	62	71	53	67	2,197	total

Transition of fatal and non-fatal accidents in prefectures in code no. 010903 pottery products (1999-2021)

code	Prefecture	1999	2000	2001	2002	2003	2004	2005	2006	2007	2008	2009	2010	2011	2012	2013	2014	2015	2016	2017	2018	2019	2020	2021	total	Prefecture
21	Gifu	65	73	66		51		37	56	44	38	29	29	22	34	34	31	31	32	22	25	36	19	31	805	Gifu
23	Aichi	36	45	47		30		28	26	26	26	13	19	20	23	13	19	14	21	23	17	12	17		498	Aichi
41	Saga	10	10	11		8		3	7	3	5	4	4	3	4	3	2	3	3	5	2	4	6	5	105	Saga
24	Mie	6	6	2		5		5	4	3	5	3	2	1	2	3	3	1	3	2		2	2	4	64	Mie
42	Nagasaki	6	6	6		3			7	5		1	1	2	2	2	1	2	2	2	2	2	3	2	57	Nagasaki
7	Fukushima		1	2					1	2	4		1	1	1	1		1				1		2	18	Fukushima
29	Nara																	1						2	3	Nara
40	Fukuoka	5		2		1		2	1	2	3			1			1			2	2	1	1	1	25	Fukuoka
9	Tochigi		3	4		4		2								1		2	1			2		1	21	Tochigi

20	Nagano	1	1												1	2			1			1	7	Nagano	
28	Hyogo	1					2			1						1						1	6	Hyogo	
25	Shiga	4	7	6		8		6	5	4	3	2	1	2	1	2	4	1		3	1		3	63	Shiga
27	Osaka	5	4			2					2	1	1		4	1			1	2			1	24	Osaka
44	Oita		2	1		5		5	1	2	1		2	1		1	1						1	23	Oita
17	Ishikawa	1	2	2				3	1	1	1		1	1		1	1		2	1				18	Ishikawa
45	Miyazaki	2		2					1	2	2				1	3						1		14	Miyazaki
26	Kyoto	2	3			2			1			1			2		1	1						13	Kyoto
46	Kagoshima	1	1	1					1	1						3	1			1	2		1	13	Kagoshima
47	Okinawa		1	2		3		2			1					1	1	1					1	13	Okinawa
38	Ehime		2	3		1			1	2		1												10	Ehime
1	Hokkaido	2		2		1		1	1						1							1		9	Hokkaido
33	Okayama	1	1	2		4								1										9	Okayama
35	Yamaguchi	2		1		1					1		1				1		1	1				9	Yamaguchi
11	Saitama	1		1		1				1			1			1			1			1		8	Saitama
22	Shizuoka	1	2												1		1	1	1				1	8	Shizuoka
43	Kumamoto	1				1		1					1	1				1	1			1		8	Kumamoto
12	Chiba		3	1					1			1	1											7	Chiba
14	Kanagawa	2				1					1					1		1			1			7	Kanagawa
32	Shimane		2	1					2	1						1								7	Shimane
2	Aomori	1				1		1											1		1			5	Aomori
4	Miyagi													1	1					2		1		5	Miyagi
10	Gunma			1					1									1		1		1		5	Gunma

16	Toyama	2					1	2																5	Toyama	
30	Wakayama						1					1	1	1	1									5	Wakayama	
37	Kagawa	2			1			1											1					5	Kagawa	
8	Ibaraki	2			1									1										4	Ibaraki	
15	Niigata											1	2				1							4	Niigata	
18	Fukui	1	1								1													3	Fukui	
31	Tottori							1					2											3	Tottori	
3	Iwate	1										1												2	Iwate	
6	Yamagata	1															1							2	Yamagata	
39	Kochi	1	1																					2	Kochi	
5	Akita													1										1	Akita	
34	Hiroshima																				1			1	Hiroshima	
13	Tokyo																								Tokyo	
19	Yamanashi																								Yamanashi	
36	Tokushima																								Tokushima	
	total	161	181	167		135		100	120	101	94	58	66	61	81	75	71	64	68	68	62	71	53	67	1,924	total

Data source : <https://anzeninfo.mhlw.go.jp/user/anzen/tok/anst00.htm>

Return to https://www.jisha.or.jp/english/statistics/202211_23.html