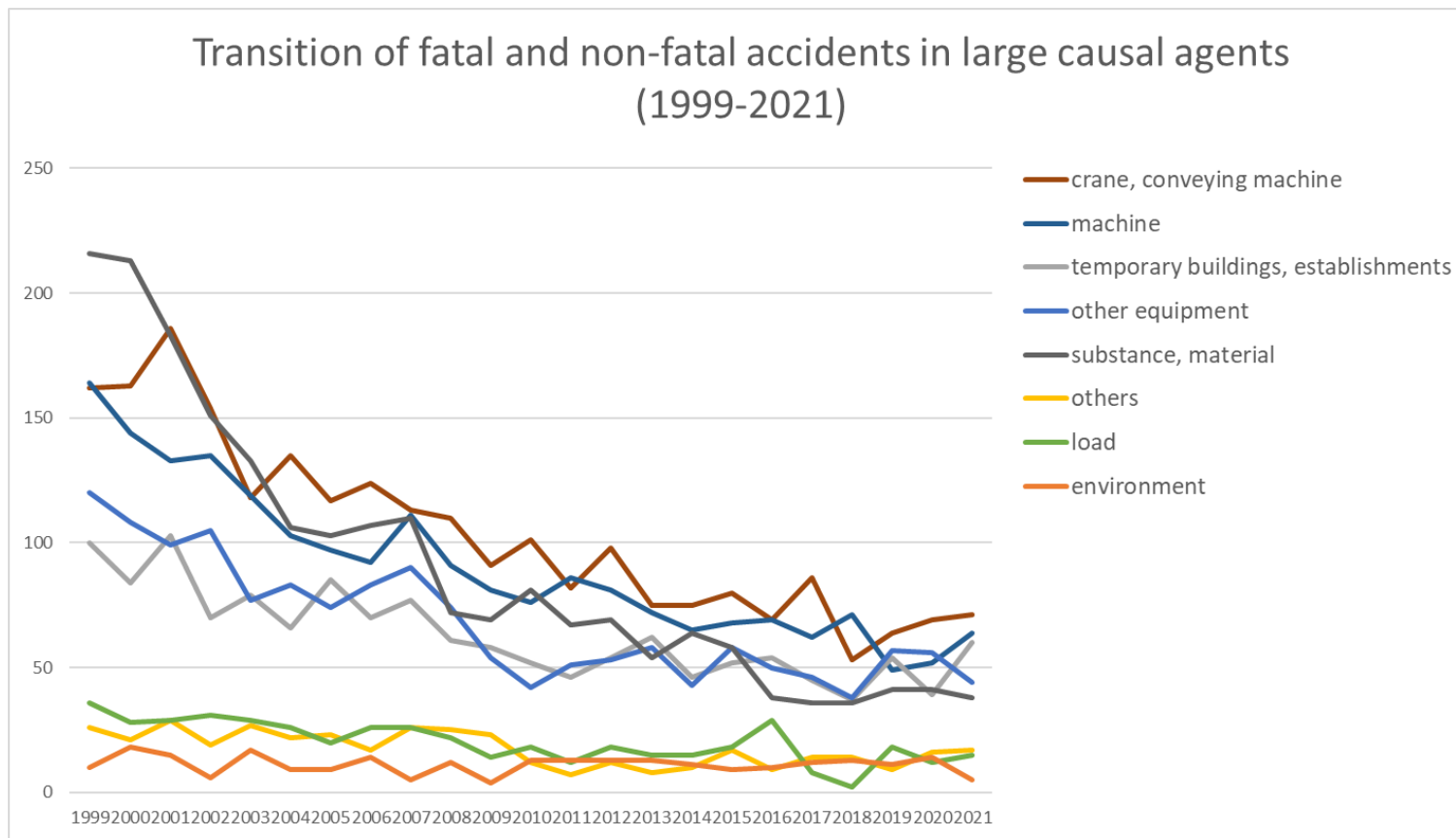
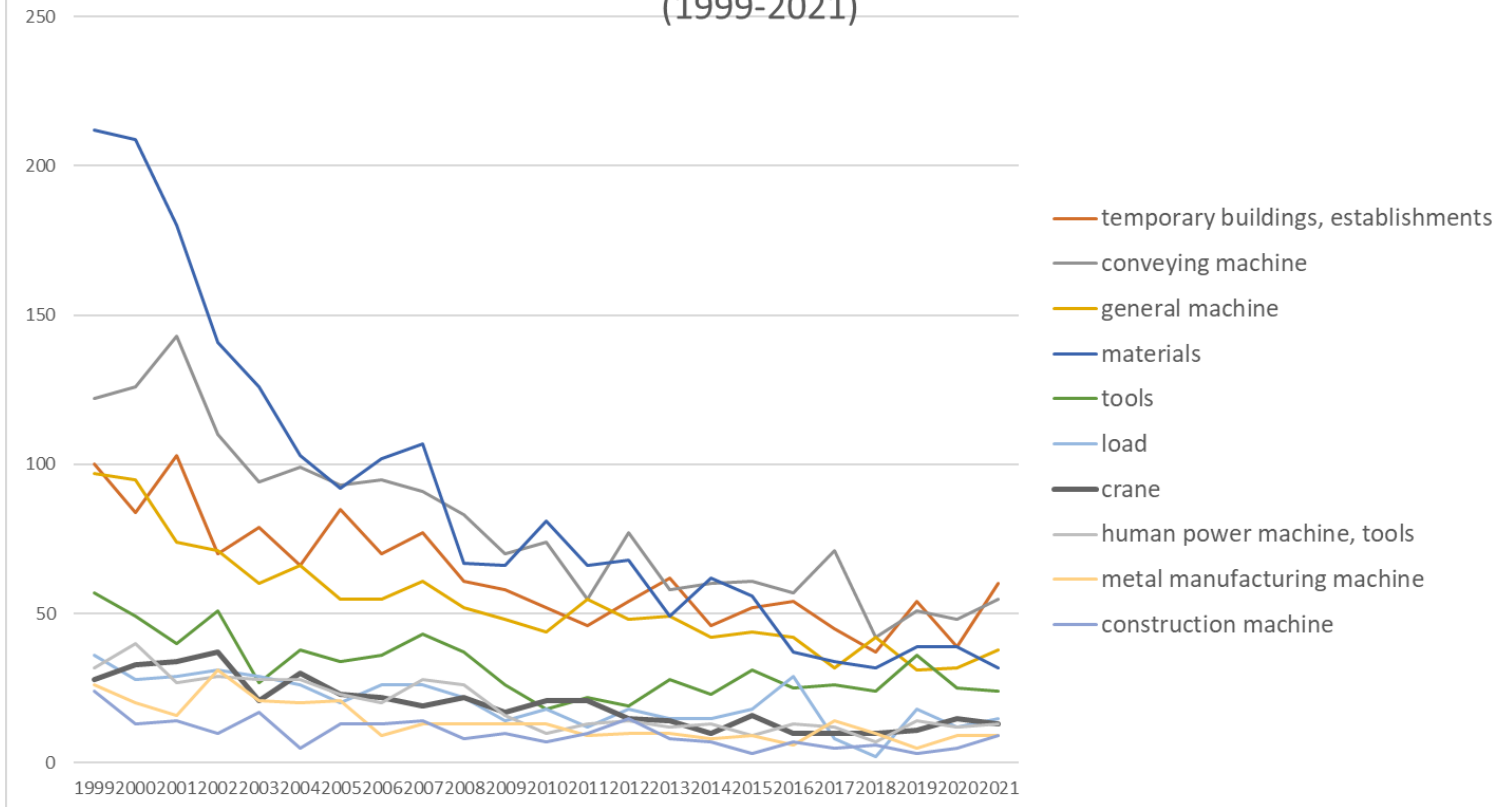


Transition of fatal and non-fatal accidents in each element like as causal agents, type of accidents, etc. in code no. 010909 other sand and stone products (1999-2021)



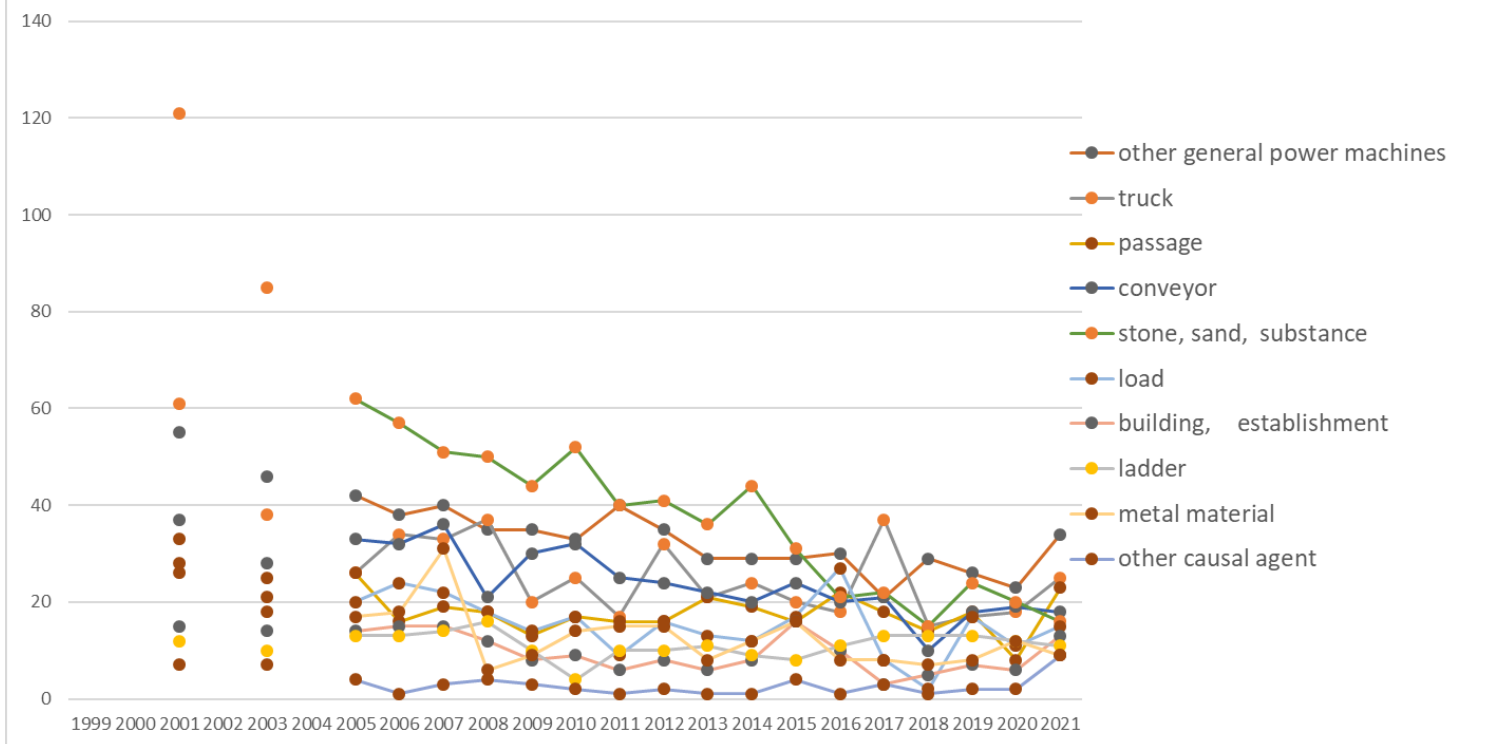
Transition of fatal and non-fatal accidents in large causal agents in code no. 010909 other sand and stone products (1999-2021)

Transition of fatal and non-fatal accidents in top 10 middle causal agents (1999-2021)



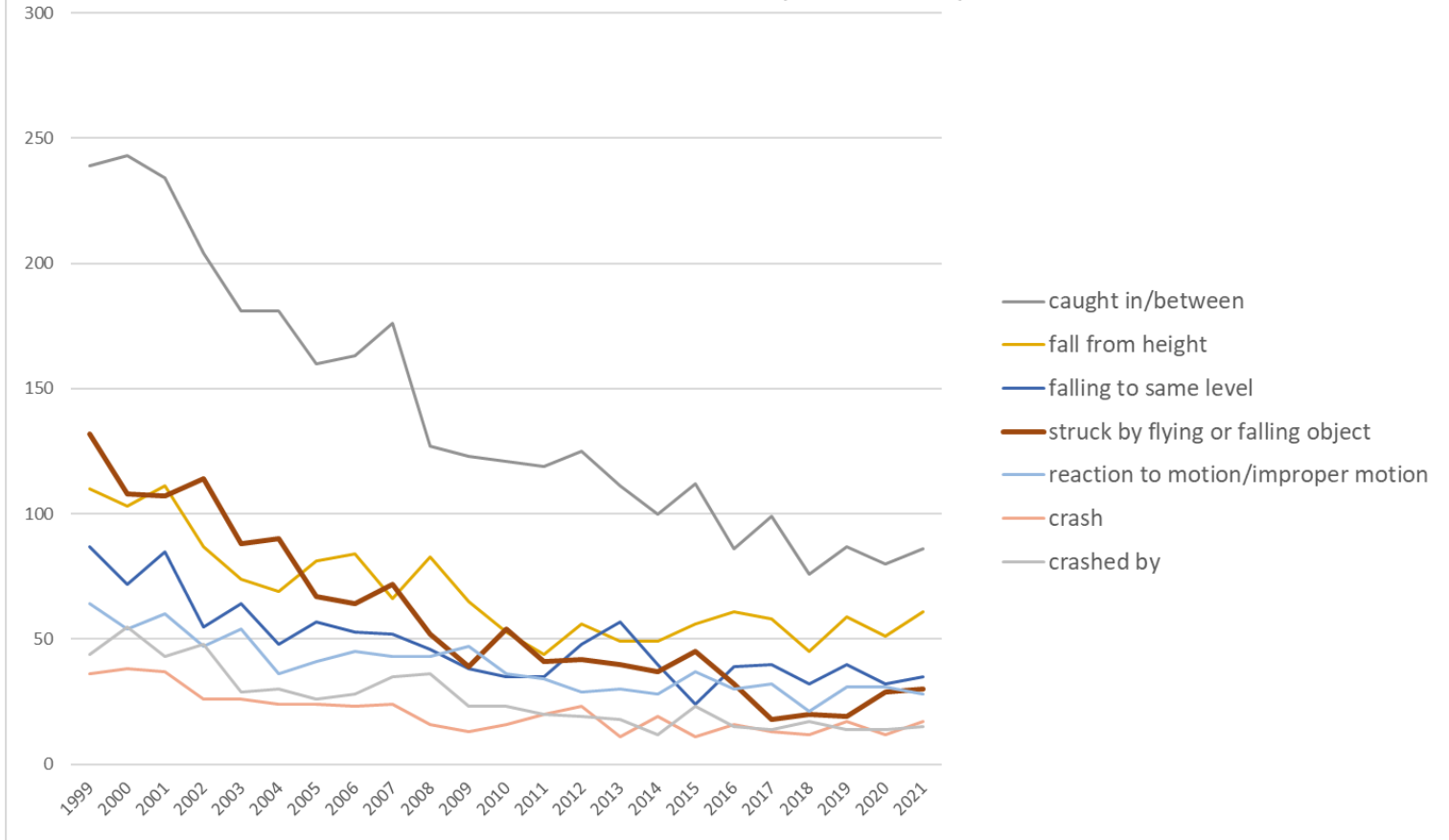
Transition of fatal and non-fatal accidents in middle causal agents in code no. 010909 other sand and stone products (1999-2021)

Transition of fatal and non-fatal accidents in top 10 small causal agents (1999-2021)



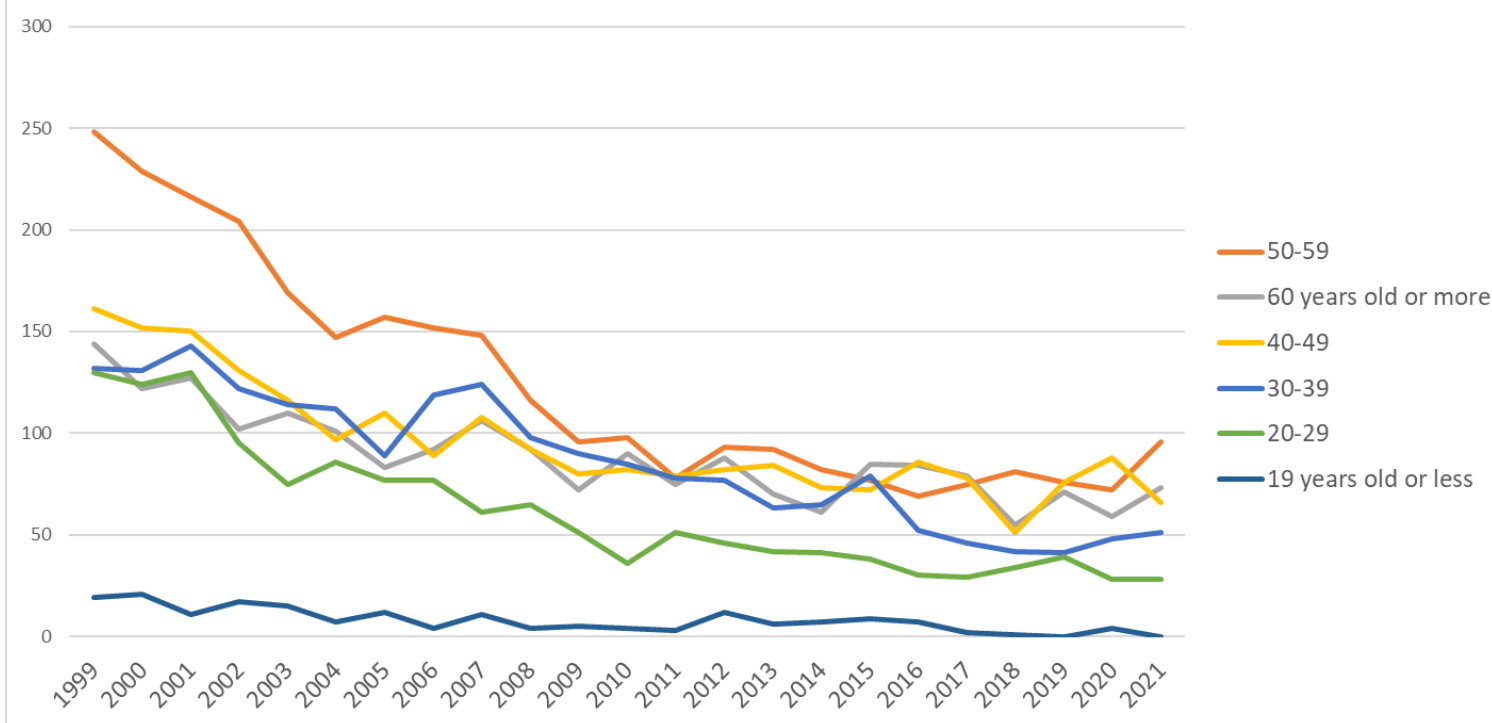
Transition of fatal and non-fatal accidents in small causal agents in code no. 010909 other sand and stone products (1999-2021)

Transition of fatal and non-fatal accidents in top 7 type of accidents
(1999-2021)



Transition of fatal and non-fatal accidents in type of accidents in code no. 010909 other sand and stone products (1999-2021)

Transition of fatal and non-fatal accidents in workers ages (1999-2021)



Transition of fatal and non-fatal accidents in workers ages in code no. 010909 other sand and stone products (1999-2021)

35	Yamaguchi	3	14	6		8		5	7	4	6	4	3	7	6	7		2	4	2	2	4	4	3	101	Yamaguchi
29	Nara	4	9	7		9		6	1	5	8	4	4	1	3	2	3	1	5	1	1	3	6	3	86	Nara
18	Fukui	9	7	3					1	1	1	3	1	2	2	1	1	1	2	3		3	1	3	45	Fukui
10	Gunma	20	14	23		10		14	5	10	4	8	6	4	7	5	10	5	6	4	5	11	5	2	178	Gunma
16	Toyama	16	12	6		11		5	11	7	8	9	5	5	7	4	6	5	2	4	3	2	5	2	135	Toyama
2	Aomori	14	12	9		2		4	5		4	5	1	1	1	4	2	2	2	2	1	7	6	2	86	Aomori
36	Tokushima	7	4	2		3		5	3	5	3	5	5	2	1	4	2	5	6	2	3	2		2	71	Tokushima
6	Yamagata	12	9	10		9		3	6	6	2	5	2	2	7	4	3	4	5	5	3	2		1	100	Yamagata
45	Miyazaki	7	9	5		8		11	6	3	6	3		6	6	3	2	7	3	3		3	4	1	96	Miyazaki
5	Akita	15	8	6		5		2	5	4	4	9	3	5	2	4	4	4	1	2	4	2	2	1	92	Akita
17	Ishikawa	4	8	4		7		6	4	10	6	4	3	1	1	4		2	3	4	3	5	4	1	84	Ishikawa
46	Kagoshima	16	9	13		4		4	4	2	7	3	3	1	1	1	2	4	2	1	3	1		1	82	Kagoshima
30	Wakayama	2	7	12		4		9	3	2	4	3	6	2		2	1	1	8		2	1		1	70	Wakayama
47	Okinawa	3	2	7		1		5		1	2	1		2	4	1	4	1	2	2		3	1	1	43	Okinawa
41	Saga	5	5	1		6		1	4	4	2	2			2		1	2	1		1	2	2	1	42	Saga
31	Tottori	7	3	2		1			4	3	1	1		1	2				2	1	1	1		1	31	Tottori
	total	834	779	777		599		528	533	558	467	394	395	364	398	357	329	360	328	309	264	303	299	314	9,489	total

Data source : <https://anzeninfo.mhlw.go.jp/user/anzen/tok/anst00.htm>

Return to https://www.jisha.or.jp/english/statistics/202211_23.html