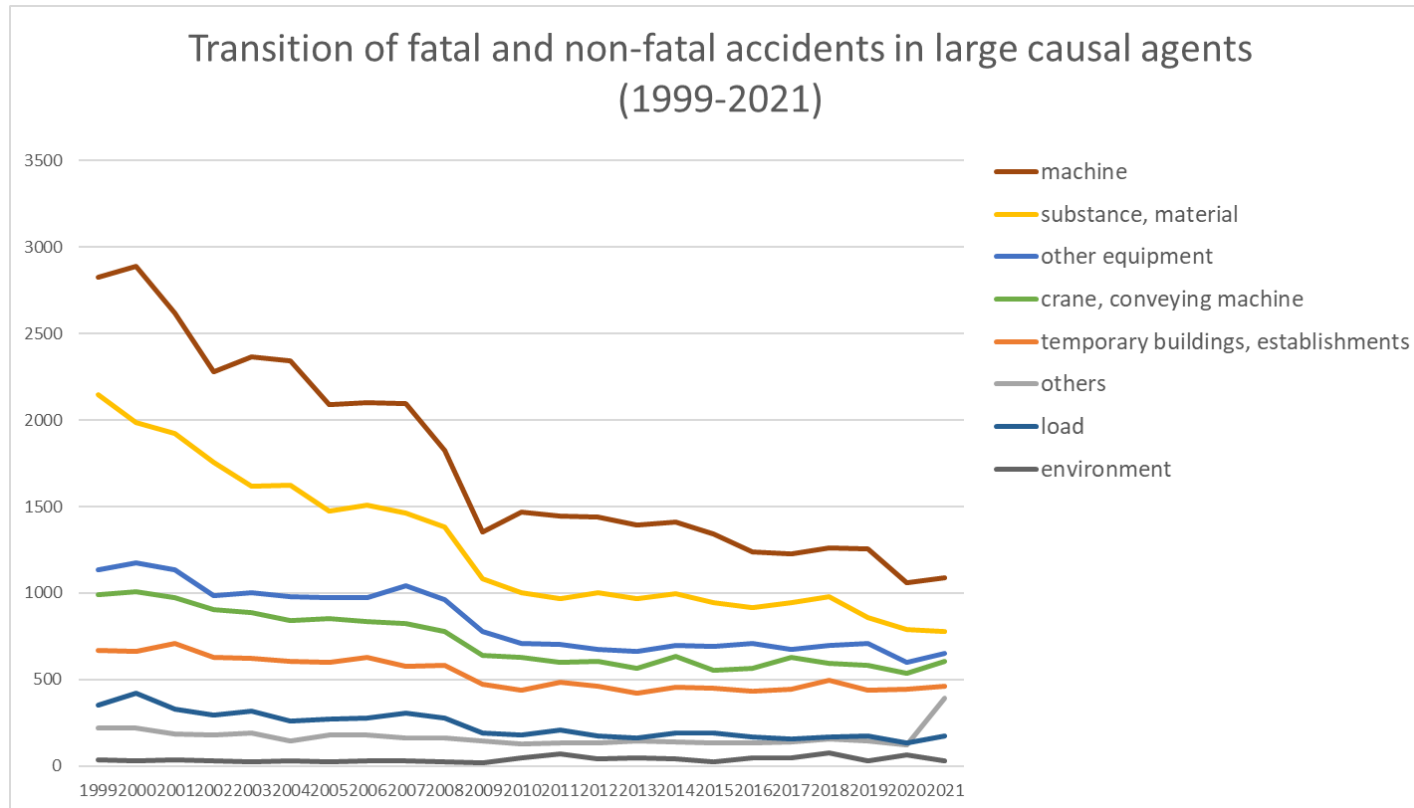
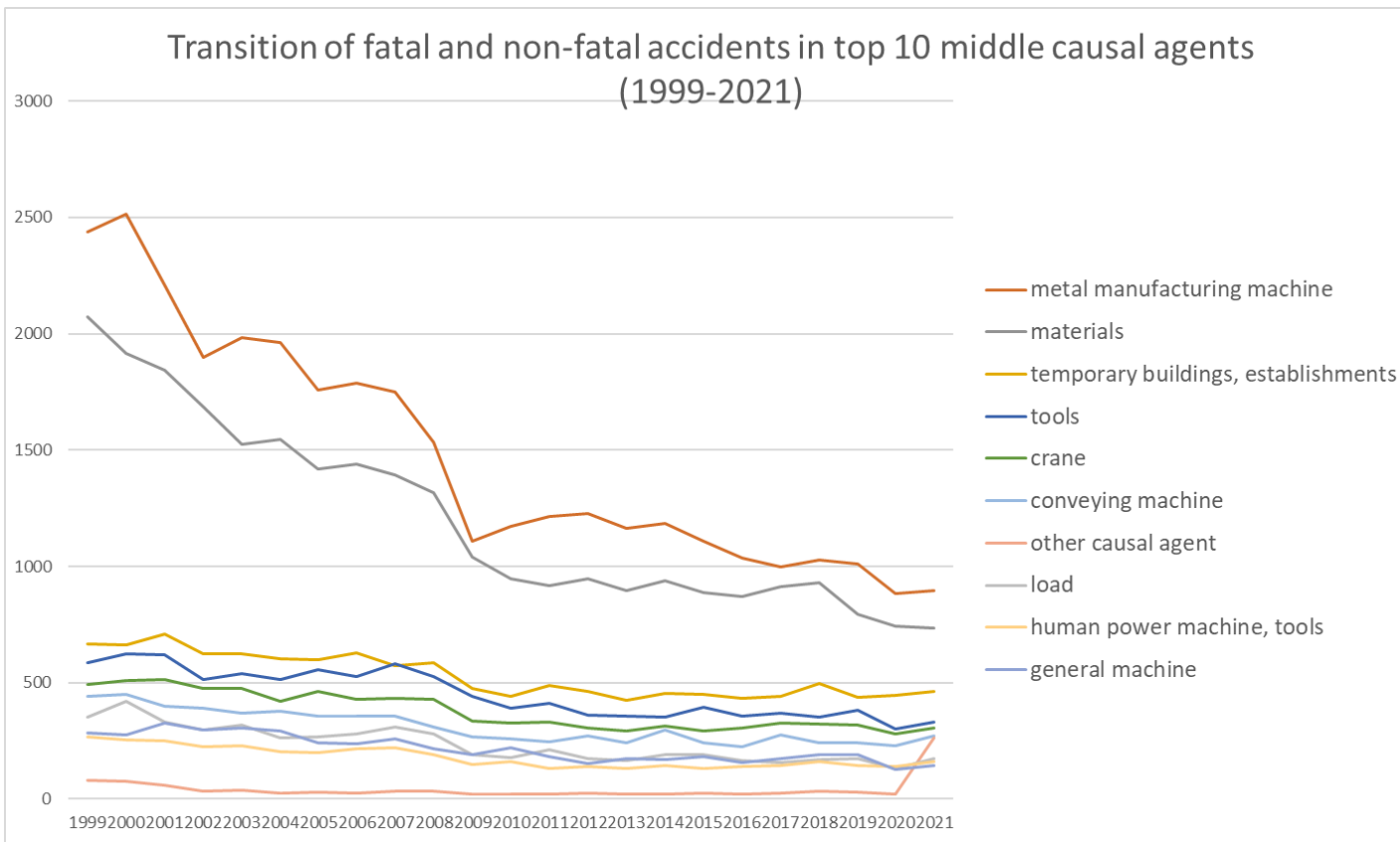


Transition of fatal and non-fatal accidents in each element like as causal agents, type of accidents, etc. in code no. 0112 metal products (1999-2021)



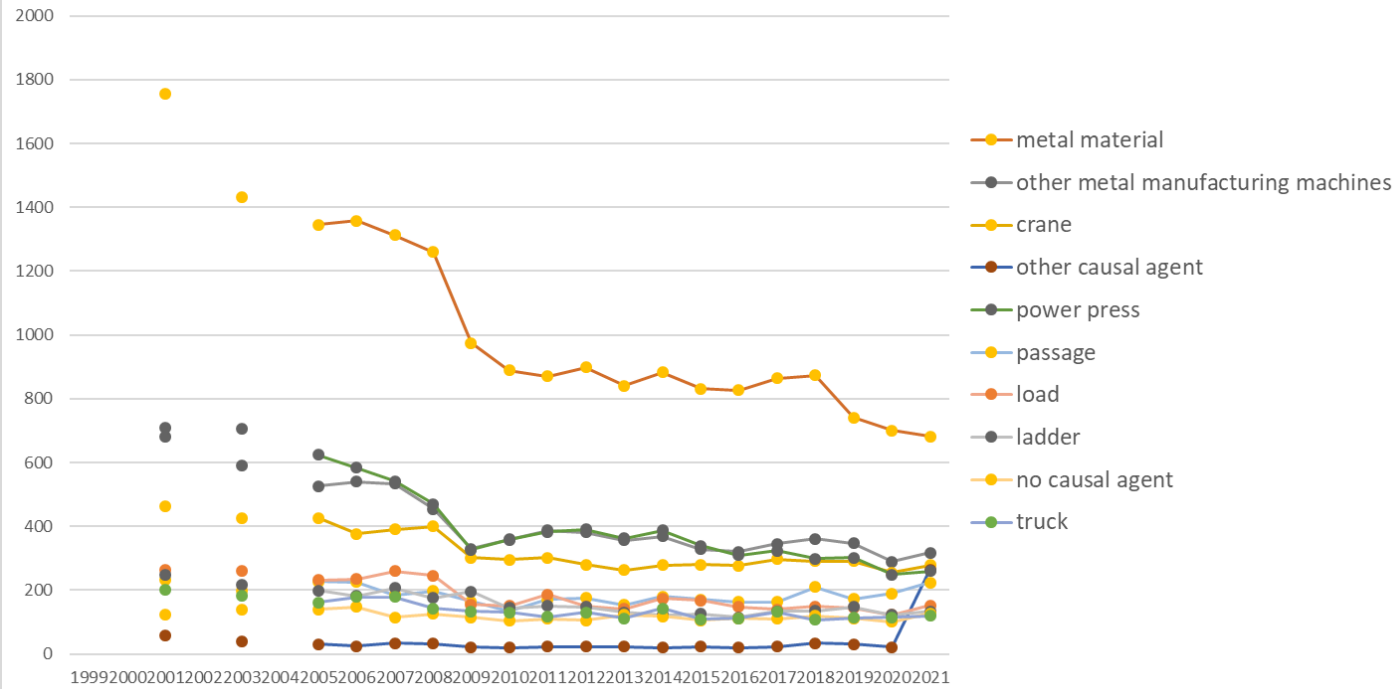
Transition of fatal and non-fatal accidents in large causal agents in code no. 0112 metal products (1999-2021)

Transition of fatal and non-fatal accidents in top 10 middle causal agents
(1999-2021)



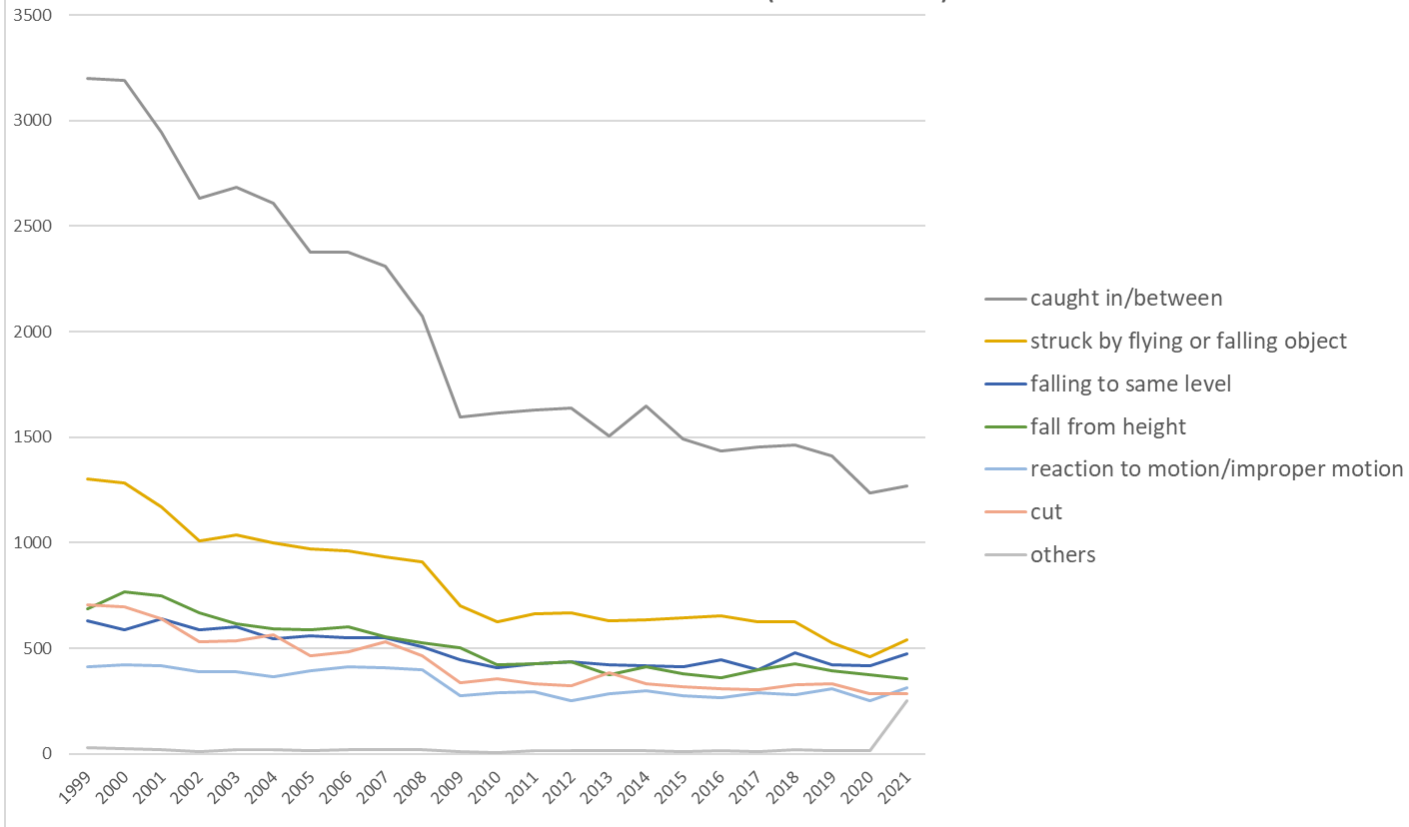
Transition of fatal and non-fatal accidents in middle causal agents in code no. 0112 metal products (1999-2021)

Transition of fatal and non-fatal accidents in top 10 small causal agents (1999-2021)



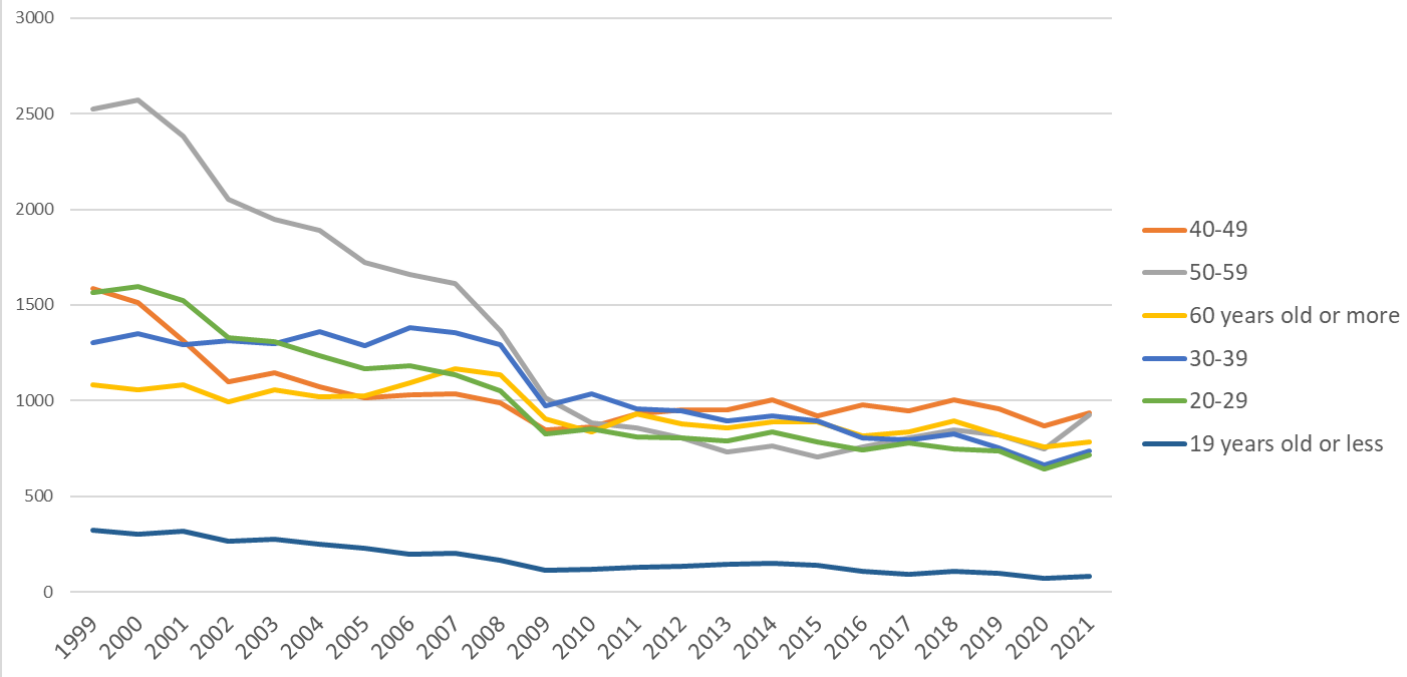
Transition of fatal and non-fatal accidents in small causal agents in code no. 0112 metal products (1999-2021)

Transition of fatal and non-fatal accidents in top 7 type of accidents
(1999-2021)



Transition of fatal and non-fatal accidents in type of accidents in code no. 0112 metal products (1999-2021)

Transition of fatal and non-fatal accidents in workers ages (1999-2021)



Transition of fatal and non-fatal accidents in workers ages in code no. 0112 metal products (1999-2021)

15	burst	9	2	9	2	4	4	2	8	7	6	1	4	2	2		3	7	3	3	3	1	4	3	89	burst
13	electric shock	9	7	8	4	7	6	8	2	4	7	9	7	7	6	8	5	5	6	4	8	3	1	2	133	electric shock
18	traffic accident (others)	5		1			1	2	3	5					1	1	1			1					21	traffic accident (others)
10	drown		1		1									14					1	1					18	drown
	total	8,378	8,394	7,912	7,057	7,031	6,824	6,454	6,542	6,501	6,005	4,684	4,592	4,617	4,523	4,376	4,572	4,340	4,211	4,259	4,432	4,186	3,755	4,183	127,828	total

Transition of fatal and non-fatal accidents in workers ages in code no. 0112 metal products (1999-2021)

code	Age	1999	2000	2001	2002	2003	2004	2005	2006	2007	2008	2009	2010	2011	2012	2013	2014	2015	2016	2017	2018	2019	2020	2021	total	Age
4	40-49	1,584	1,515	1,312	1,101	1,146	1,071	1,017	1,032	1,036	991	848	864	929	950	954	1,006	921	978	946	1,007	955	866	938	23,967	40-49
5	50-59	2,523	2,573	2,383	2,053	1,946	1,889	1,724	1,658	1,610	1,368	1,016	886	859	805	731	764	707	760	803	845	821	749	924	30,397	50-59
6	60 years old or more	1,082	1,059	1,085	995	1,057	1,020	1,028	1,092	1,166	1,136	905	839	931	881	860	891	891	814	839	893	821	759	782	21,826	60 years old or more
3	30-39	1,305	1,350	1,292	1,313	1,296	1,360	1,288	1,382	1,353	1,294	974	1,034	957	945	895	922	893	808	795	828	754	664	739	24,441	30-39
2	20-29	1,563	1,597	1,522	1,327	1,311	1,236	1,169	1,181	1,134	1,051	826	851	810	805	792	837	786	742	781	749	737	644	717	23,168	20-29
1	19 years old or less	321	300	318	268	275	248	228	197	202	165	115	118	131	137	144	152	142	109	95	110	98	73	83	4,029	19 years old or less
	total	8,378	8,394	7,912	7,057	7,031	6,824	6,454	6,542	6,501	6,005	4,684	4,592	4,617	4,523	4,376	4,572	4,340	4,211	4,259	4,432	4,186	3,755	4,183	127,828	total

Transition of fatal and non-fatal accidents in workers scales in code no. 0112 metal products (1999-2021)

code	Workers scale	1999	2000	2001	2002	2003	2004	2005	2006	2007	2008	2009	2010	2011	2012	2013	2014	2015	2016	2017	2018	2019	2020	2021	total	Workers scale
2	10-29	2,959	2,825	2,718	2,432	2,380	2,354	2,243	2,276	2,252	2,082	1,622	1,606	1,588	1,663	1,553	1,626	1,567	1,464	1,486	1,487	1,394	1,303	1,402	44,282	10-29
1	9 workers or less	3,309	3,369	3,142	2,808	2,771	2,708	2,485	2,395	2,252	2,045	1,634	1,528	1,597	1,395	1,398	1,363	1,302	1,225	1,184	1,247	1,075	1,003	909	44,144	9 workers or less
3	30-49	1,019	1,062	972	884	917	870	866	898	904	860	660	661	632	654	665	744	710	721	725	746	739	669	754	18,332	30-49
4	50-99	690	702	671	590	577	567	526	577	640	597	448	483	461	465	441	494	458	457	519	499	567	438	560	12,427	50-99

28	Hyogo	403	496	447		411		393	384	364	363	284	289	290	262	236	233	257	197	231	273	208	207	211	6,439	Hyogo
12	Chiba	331	330	346		334		303	299	277	282	265	236	218	212	186	217	239	209	188	199	192	199	203	5,265	Chiba
11	Saitama	378	353	364		350		318	313	302	311	252	213	209	236	224	239	201	215	191	208	198	196	195	5,466	Saitama
15	Niigata	335	289	266		249		179	243	219	183	144	174	167	160	166	173	153	144	134	143	192	159	171	4,043	Niigata
22	Shizuoka	351	324	276		279		246	268	261	269	173	181	188	189	194	188	192	162	181	206	208	191	168	4,695	Shizuoka
40	Fukuoka	289	305	295		243		204	195	275	232	173	138	181	150	164	174	170	155	166	159	144	123	148	4,083	Fukuoka
14	Kanagawa	369	372	356		270		267	273	240	218	197	183	165	172	166	172	169	133	159	153	152	116	146	4,448	Kanagawa
8	Ibaraki	232	278	235		205		149	185	166	163	114	136	146	159	165	156	141	145	154	149	141	118	142	3,479	Ibaraki
34	Hiroshima	280	276	259		229		225	216	195	196	131	139	162	151	147	143	130	157	138	163	121	109	135	3,702	Hiroshima
9	Tochigi	140	142	129		120		126	107	98	104	97	61	74	76	75	73	84	104	81	82	70	65	126	2,034	Tochigi
10	Gunma	236	245	208		202		216	199	197	212	127	139	129	136	133	141	111	123	118	136	109	112	114	3,343	Gunma
21	Gifu	191	196	177		187		140	160	153	146	109	127	119	114	111	120	112	116	111	113	95	82	108	2,787	Gifu
13	Tokyo	367	337	281		259		226	226	237	199	145	126	138	146	118	114	129	122	110	135	90	93	104	3,702	Tokyo
33	Okayama	149	125	130		122		109	120	124	86	74	69	76	79	69	78	80	68	83	73	64	70	97	1,945	Okayama
1	Hokkaido	272	254	241		187		170	171	164	153	115	101	103	97	103	112	119	103	117	104	91	99	95	2,971	Hokkaido
20	Nagano	108	107	111		108		113	104	91	94	73	76	66	79	72	77	81	73	85	73	76	71	81	1,819	Nagano
24	Mie	178	181	159		154		123	115	144	141	89	99	108	87	103	110	119	85	89	89	95	71	80	2,419	Mie
16	Toyama	132	134	141		101		93	100	69	94	81	84	63	77	76	67	63	77	78	69	58	60	69	1,786	Toyama
25	Shiga	68	103	86		102		76	83	85	76	57	55	50	54	76	77	58	60	72	64	60	41	66	1,469	Shiga
29	Nara	70	69	51		67		77	55	66	50	40	50	44	57	43	64	44	41	40	59	57	37	60	1,141	Nara
26	Kyoto	119	120	134		73		84	86	101	84	70	66	67	63	65	63	63	54	63	46	58	60	57	1,596	Kyoto
37	Kagawa	109	103	110		95		88	69	108	80	56	72	65	67	60	55	61	53	56	63	75	59	56	1,560	Kagawa
42	Nagasaki	98	61	77		56		65	68	73	76	50	44	55	58	38	53	49	58	47	49	70	50	54	1,249	Nagasaki
35	Yamaguchi	111	75	94		97		68	82	66	73	38	51	45	46	37	43	45	46	42	39	48	50	51	1,247	Yamaguchi
4	Miyagi	86	72	65		64		61	56	59	60	45	62	48	45	46	46	45	53	43	57	41	47	49	1,150	Miyagi

7	Fukushima	106	112	116		93		90	88	97	81	61	67	70	69	60	67	57	41	50	55	47	55	47	1,529	Fukushima
6	Yamagata	57	60	63		58		48	65	52	41	36	37	37	35	49	34	41	39	35	40	36	32	47	942	Yamagata
30	Wakayama	60	63	53		54		46	47	60	65	49	40	49	59	23	37	39	47	47	42	29	32	41	982	Wakayama
43	Kumamoto	75	85	76		69		55	66	66	60	48	41	56	31	28	36	31	39	36	51	39	29	39	1,056	Kumamoto
17	Ishikawa	59	91	73		52		71	68	72	53	31	31	41	37	61	41	38	38	51	47	24	29	38	1,046	Ishikawa
41	Saga	50	37	39		35		21	26	38	49	31	31	38	33	21	39	34	35	33	35	20	32	34	711	Saga
38	Ehime	109	101	103		105		86	84	89	88	67	67	64	49	43	51	50	51	57	49	51	48	31	1,443	Ehime
5	Akita	53	48	34		25		28	41	28	33	40	14	32	22	37	29	30	22	30	22	22	16	29	635	Akita
18	Fukui	47	45	46		29		34	28	41	34	27	25	28	36	39	28	33	37	29	37	32	22	24	701	Fukui
46	Kagoshima	43	40	43		23		28	29	32	18	29	24	30	14	11	20	10	19	29	22	28	26	24	542	Kagoshima
3	Iwate	63	64	51		50		41	34	24	24	20	29	20	30	28	27	25	31	22	18	29	23	23	676	Iwate
44	Oita	53	67	56		44		32	58	40	38	31	34	30	32	29	39	28	25	30	35	36	30	22	789	Oita
2	Aomori	41	34	43		26		34	33	29	38	21	14	23	25	19	21	23	17	32	31	32	21	22	579	Aomori
19	Yamanashi	33	40	38		35		29	21	26	35	14	21	16	18	26	23	20	21	22	25	29	24	19	535	Yamanashi
45	Miyazaki	25	21	33		27		29	26	26	25	15	19	15	14	12	13	18	17	15	19	10	14	16	409	Miyazaki
36	Tokushima	38	34	28		27		29	19	25	11	13	23	18	17	23	17	14	18	22	22	19	14	15	446	Tokushima
31	Tottori	17	22	18		14		12	15	15	15	10	6	6	10	9	13	9	7	14	13	9	8	15	257	Tottori
47	Okinawa	17	20	13		11		11	7	8	15	8	10	7	11	9	14	8	9	15	7	11	7	13	231	Okinawa
39	Kochi	37	40	22		40		35	31	32	30	17	11	15	21	15	25	17	10	20	16	28	10	12	484	Kochi
32	Shimane	19	21	27		13		20	15	14	17	17	14	7	5	4	12	8	14	12	18	10	14	9	290	Shimane
	total	8,378	8,394	7,912		7,031		6,454	6,542	6,501	6,005	4,684	4,592	4,617	4,523	4,376	4,572	4,340	4,211	4,259	4,432	4,186	3,755	4,183	113,947	total

Data source : <https://anzeninfo.mhlw.go.jp/user/anzen/tok/anst00.htm>

Return to https://www.jisha.or.jp/english/statistics/202211_23.html