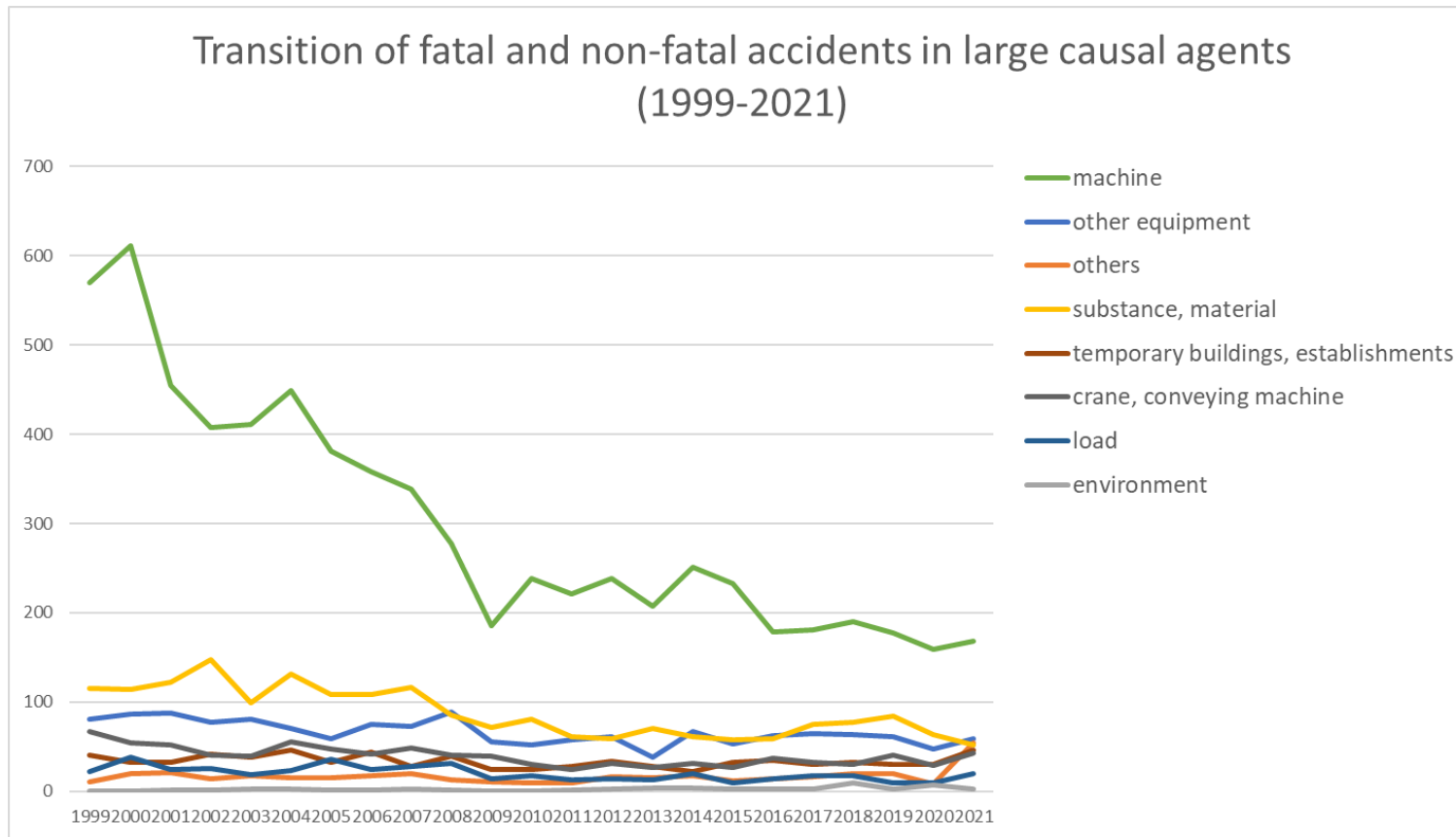
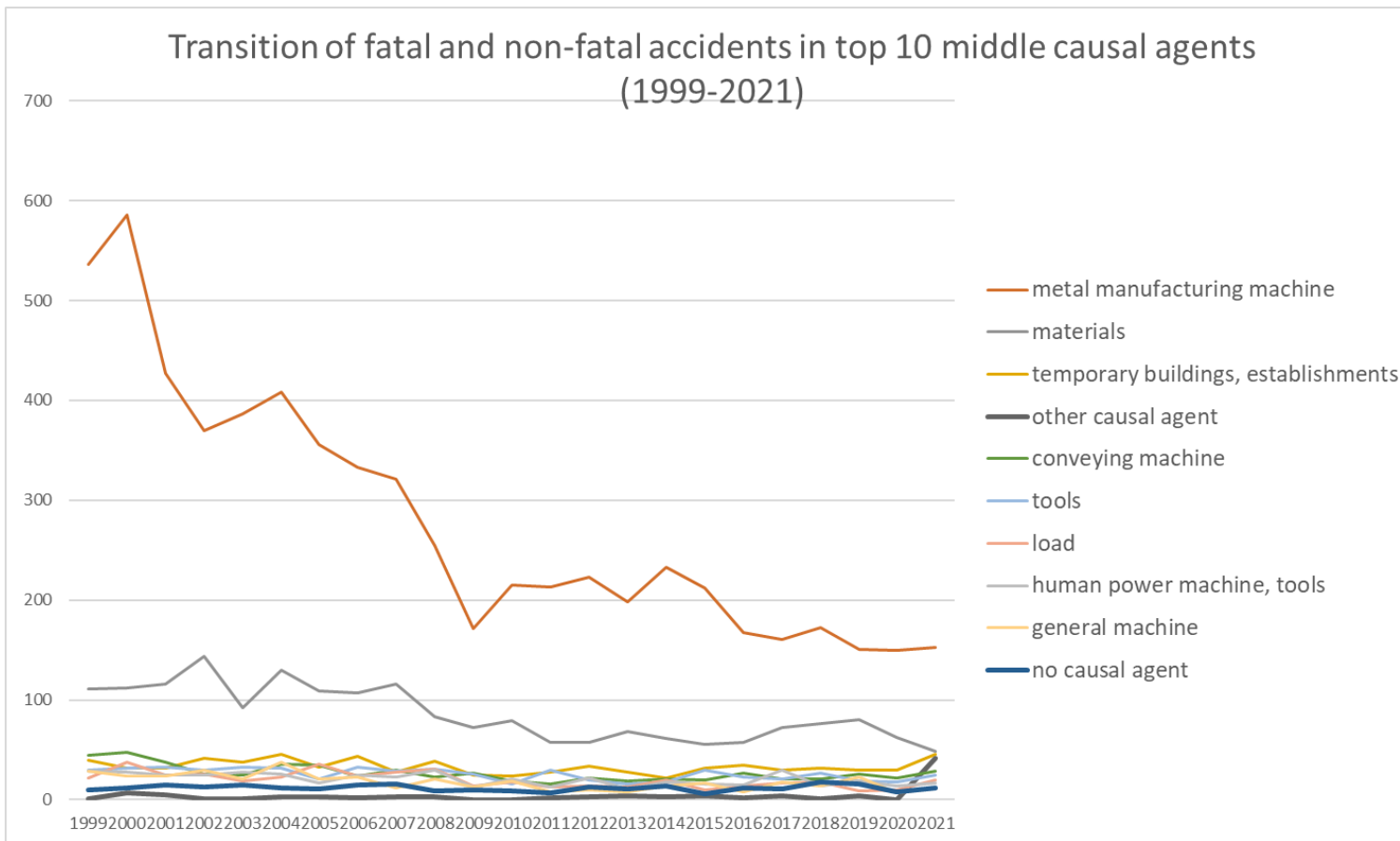


Transition of fatal and non-fatal accidents in each element like as causal agents, type of accidents, etc. in code no. 011203 metal press products (1999-2021)



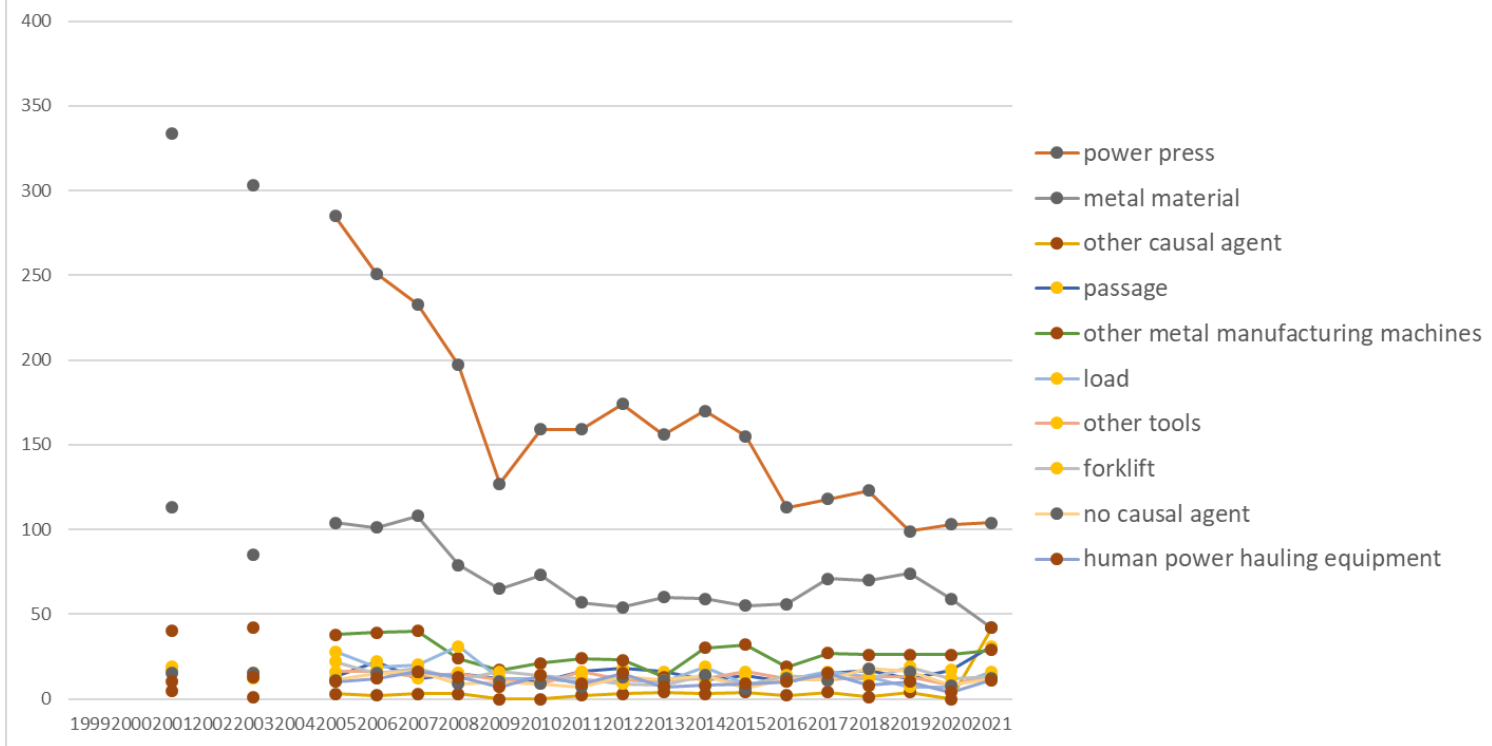
Transition of fatal and non-fatal accidents in large causal agents in code no. 011203 metal press products (1999-2021)

Transition of fatal and non-fatal accidents in top 10 middle causal agents  
(1999-2021)



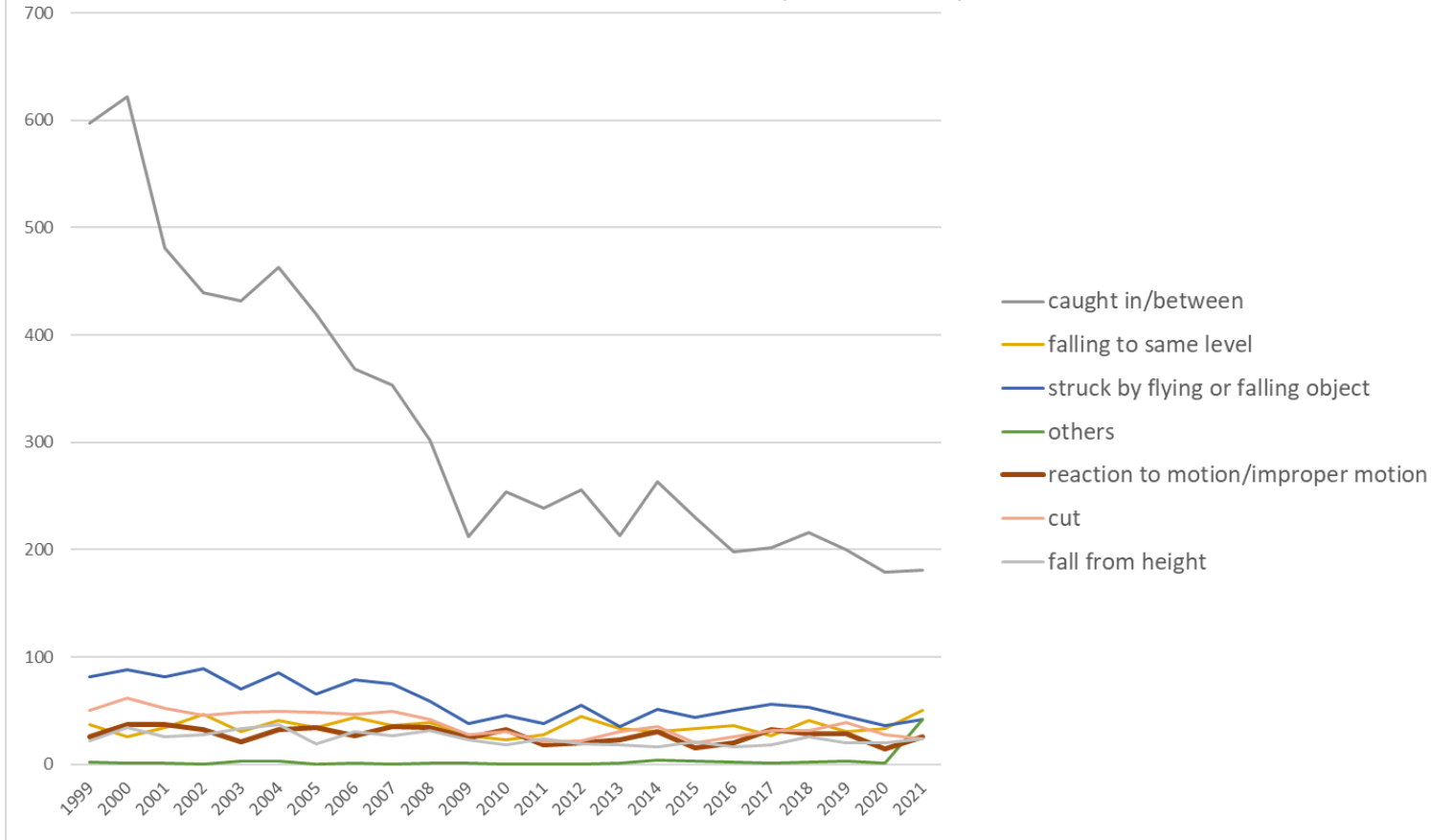
Transition of fatal and non-fatal accidents in middle causal agents in code no. 011203 metal press products (1999-2021)

### Transition of fatal and non-fatal accidents in top 10 small causal agents (1999-2021)



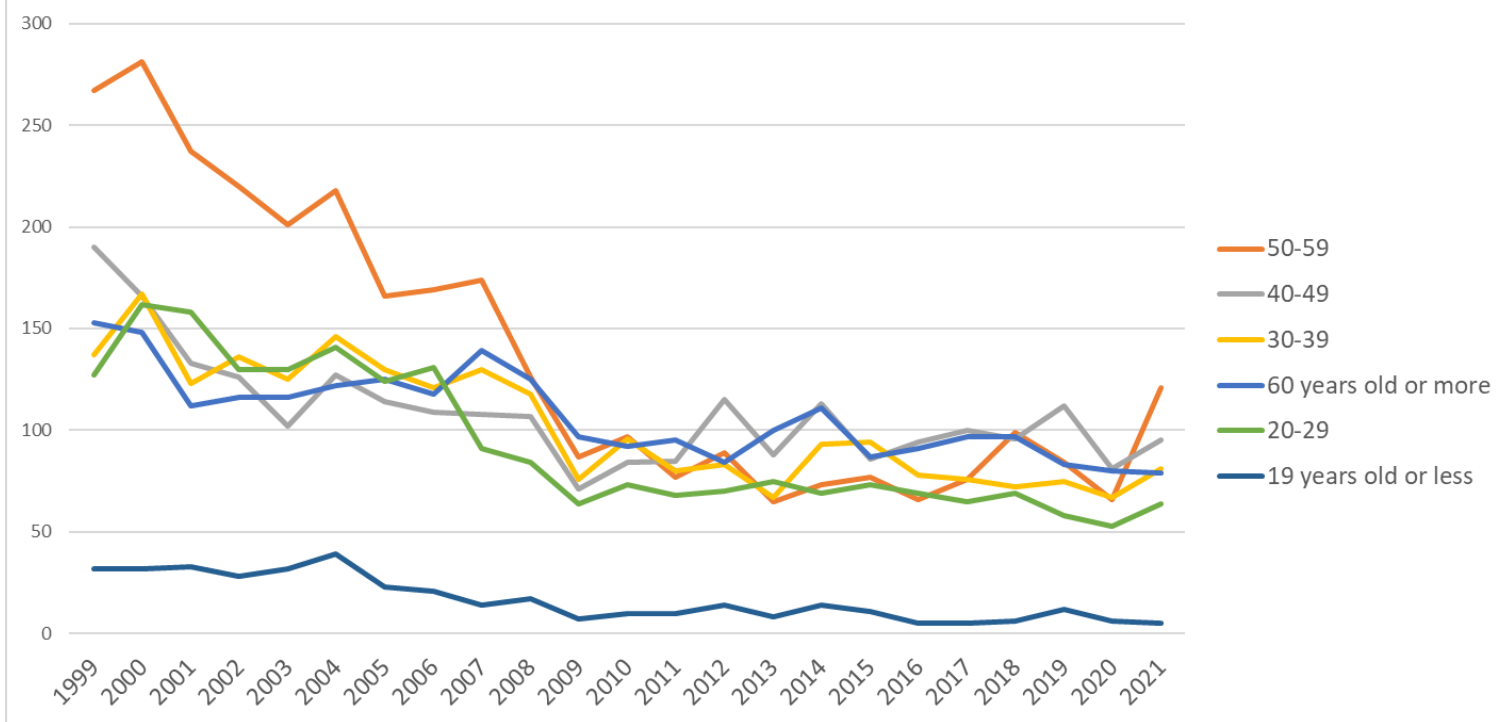
Transition of fatal and non-fatal accidents in small causal agents in code no. 011203 metal press products (1999-2021)

Transition of fatal and non-fatal accidents in top 7 type of accidents  
(1999-2021)



Transition of fatal and non-fatal accidents in type of accidents in code no. 011203 metal press products (1999-2021)

Transition of fatal and non-fatal accidents in workers ages (1999-2021)



Transition of fatal and non-fatal accidents in workers ages in code no. 011203 metal press products (1999-2021)































01	fall from height	22	34	26	28	33	37	19	30	27	31	23	18	24	19	18	16	21	16	18	26	20	20	24	550	fall from height
03	crash	20	20	18	16	20	18	12	16	13	19	14	9	11	7	11	11	19	15	15	10	15	10	23	342	crash
06	crashed by	26	24	21	21	20	28	24	21	21	17	14	15	15	12	13	17	14	10	13	19	16	18	12	411	crashed by
05	collapse	21	34	18	26	18	27	19	25	35	20	16	17	12	13	12	12	18	19	13	5	18	10	9	417	collapse
11	contact to high/low-temperature	4	5	6	5	5	2	4	5	3	3	2	4	3	2	3	3	4	2	4	5	5	2	3	84	contact to high/low-temperature
17	traffic accident (public road)	14	1	7	3		4	1	5	5	5	1	2	3		3		2	5	1	2	1		2	67	traffic accident (public road)
16	fire	1				2	1			1	1					3			1					2	12	fire
13	electric shock	1		3											1	2	1							2	10	electric shock
12	contact to harmful substance	1	1	5	3	3					1		1	3	2	2		2	1	2		3	1	1	32	contact to harmful substance
09	injury to the sole of the foot			2	1		2	1		1	1								1	1			1	1	12	injury to the sole of the foot
14	explosion		1								1								1					1	4	explosion
99	unclassifiable			1		1		1	1	1		1			1	1		2		1					11	unclassifiable
15	burst	1		2			1	1			1		1					1							8	burst
18	traffic accident (others)	1									1									1					3	traffic accident (others)
10	drown																			1					1	drown
	total	906	956	796	756	706	793	682	669	656	577	402	452	415	455	403	473	428	403	419	439	424	353	445	13,008	total

code	Age	1999	2000	2001	2002	2003	2004	2005	2006	2007	2008	2009	2010	2011	2012	2013	2014	2015	2016	2017	2018	2019	2020	2021	total	Age
5	50-59	267	281	237	220	201	218	166	169	174	126	87	97	77	89	65	73	77	66	76	99	84	66	121	3,136	50-59
4	40-49	190	166	133	126	102	127	114	109	108	107	71	84	85	115	88	113	86	94	100	96	112	81	95	2,502	40-49
3	30-39	137	167	123	136	125	146	130	121	130	118	76	96	80	83	67	93	94	78	76	72	75	67	81	2,371	30-39
6	60 years old or more	153	148	112	116	116	122	125	118	139	125	97	92	95	84	100	111	87	91	97	97	83	80	79	2,467	60 years old or more
2	20-29	127	162	158	130	130	141	124	131	91	84	64	73	68	70	75	69	73	69	65	69	58	53	64	2,148	20-29
1	19 years old or less	32	32	33	28	32	39	23	21	14	17	7	10	10	14	8	14	11	5	5	6	12	6	5	384	19 years old or less
	total	906	956	796	756	706	793	682	669	656	577	402	452	415	455	403	473	428	403	419	439	424	353	445	13,008	total

Transition of fatal and non-fatal accidents in workers scales in code no. 011203 metal press products (1999-2021)

code	Workers scale	1999	2000	2001	2002	2003	2004	2005	2006	2007	2008	2009	2010	2011	2012	2013	2014	2015	2016	2017	2018	2019	2020	2021	total	Workers scale
2	10-29	295	313	267	245	224	249	231	214	220	182	135	159	128	158	145	151	137	123	133	142	118	106	131	4,206	10-29
3	30-49	129	128	90	105	106	130	108	104	111	114	60	72	66	71	46	79	71	65	80	93	100	81	89	2,098	30-49
5	100-299	34	39	40	27	46	38	32	49	46	36	34	32	28	34	33	43	36	43	44	47	44	35	74	914	100-299
1	9 workers or less	361	388	297	287	248	286	238	223	205	180	126	122	139	130	120	133	124	112	103	97	83	79	68	4,149	9 workers or less
4	50-99	83	80	95	85	78	86	68	68	68	64	42	54	49	50	53	64	56	55	53	55	68	45	68	1,487	50-99
6	300 workers or more	4	8	7	7	4	4	5	11	6	1	5	13	5	12	6	3	4	5	6	5	11	7	15	154	300 workers or more
	total	906	956	796	756	706	793	682	669	656	577	402	452	415	455	403	473	428	403	419	439	424	353	445	13,008	total

Transition of fatal and non-fatal accidents in months in code no. 011203 metal press products (1999-2021)

code	Month	1999	2000	2001	2002	2003	2004	2005	2006	2007	2008	2009	2010	2011	2012	2013	2014	2015	2016	2017	2018	2019	2020	2021	total	Month

1	January	76	64	54	52	60	73	44	60	55	47	23	35	33	31	27	33	41	32	36	35	38	38	60	1,047	January
8	August	71	75	56	55	62	66	71	64	60	51	25	38	46	42	21	43	23	38	29	45	32	25	46	1,084	August
9	September	81	89	74	73	64	71	61	61	53	44	33	47	38	42	48	42	40	29	41	37	29	17	40	1,154	September
3	March	96	84	88	58	79	73	61	63	55	55	38	42	23	49	31	41	33	38	28	26	33	27	39	1,160	March
7	July	81	98	80	77	56	58	74	36	74	56	45	37	50	33	48	35	39	35	38	50	38	31	37	1,206	July
6	June	82	78	57	65	68	72	67	60	47	55	36	45	40	33	35	47	40	40	39	31	42	30	36	1,145	June
10	October	62	85	62	63	56	68	47	55	51	47	35	30	22	38	28	41	44	28	33	36	43	38	36	1,048	October
4	April	80	88	60	67	42	68	51	56	43	46	35	31	24	43	41	41	37	28	36	43	32	26	34	1,052	April
11	November	68	79	53	61	51	71	50	60	50	43	39	29	43	24	36	25	33	34	26	23	35	35	32	1,000	November
12	December	63	68	56	51	52	57	40	43	53	35	31	37	28	39	25	43	24	28	37	30	35	32	31	938	December
2	February	82	71	89	63	53	68	62	54	57	53	34	37	32	32	31	44	30	39	37	45	37	28	28	1,106	February
5	May	64	77	67	71	63	48	54	57	58	45	28	44	36	49	32	38	44	34	39	38	30	26	26	1,068	May
	total	906	956	796	756	706	793	682	669	656	577	402	452	415	455	403	473	428	403	419	439	424	353	445	13,008	total

Transition of fatal and non-fatal accidents in prefectures in code no. 011203 metal press products (1999-2021)

code	Prefecture	1999	2000	2001	2002	2003	2004	2005	2006	2007	2008	2009	2010	2011	2012	2013	2014	2015	2016	2017	2018	2019	2020	2021	total	Prefecture
23	Aichi	79	91	93		80		97	76	73	73	52	54	58	55	46	69	57	56	59	62	60	51	48	1,389	Aichi
27	Osaka	145	153	139		83		126	125	100	97	68	74	59	87	67	86	67	62	59	42	57	50	43	1,789	Osaka
12	Chiba	31	29	23		23		29	24	17	18	17	11	12	11	13	13	17	18	21	22	10	6	37	402	Chiba
15	Niigata	54	57	48		55		36	37	37	28	24	43	25	36	30	31	29	26	26	28	38	32	34	754	Niigata
13	Tokyo	99	98	51		68		60	68	61	42	28	27	39	31	29	23	26	19	26	26	21	25	29	896	Tokyo
11	Saitama	60	75	64		47		33	42	41	37	35	27	20	30	20	25	29	15	26	24	14	15	25	704	Saitama
22	Shizuoka	54	50	25		43		29	33	45	36	16	20	21	25	37	37	31	29	26	33	32	27	25	674	Shizuoka
28	Hyogo	32	41	29		39		18	22	15	14	14	17	14	16	13	9	14	4	7	19	17	10	20	384	Hyogo



19	Yamanashi	7	15	10		5		4	1	5	5		5	3	2	1	2	2	3	2	7	7		1	87	Yamanashi	
32	Shimane	4	5	1		1			1	2	3				1		1		2	2		3		1	27	Shimane	
46	Kagoshima			1		1		1	1	3		1	2	2	1				1		2	3	2	1	22	Kagoshima	
41	Saga	2		2		2		1	2			1		1	1	2	1			3	1			1	20	Saga	
42	Nagasaki	1	2							1	2		1	1									1	1	1	11	Nagasaki
36	Tokushima	3	4	5		2		3	1	2	2	2	2	1		1	2	1	2	2	3	5	2		45	Tokushima	
43	Kumamoto	4	2	2		3		3	2	4	2	6	3	5	1			1	1	1	2	1	1		44	Kumamoto	
5	Akita	1	2	1		1		1	3	1	5	2	1	2	4	1		1		1	3		1		31	Akita	
39	Kochi	3	2	1		2		2	1		4				2		1			1	3	4			26	Kochi	
35	Yamaguchi		4	1				2	3	3	1			1	1	2		1							19	Yamaguchi	
18	Fukui	1		1				2							2	3	1	3	1		1	2			17	Fukui	
2	Aomori	2		1		1		1	1	2	1	1	1					2		1		1	1		16	Aomori	
44	Oita	2	1	2		1									1						2				9	Oita	
47	Okinawa							1			2	2			1					1	1		1		9	Okinawa	
38	Ehime											2			1					1	1				5	Ehime	
45	Miyazaki	1		2													1	1							5	Miyazaki	
	total	906	956	796		706		682	669	656	577	402	452	415	455	403	473	428	403	419	439	424	353	445	11,459	total	

Data source : <https://anzeninfo.mhlw.go.jp/user/anzen/tok/anst00.htm>

Return to [https://www.jisha.or.jp/english/statistics/202211\\_23.html](https://www.jisha.or.jp/english/statistics/202211_23.html)