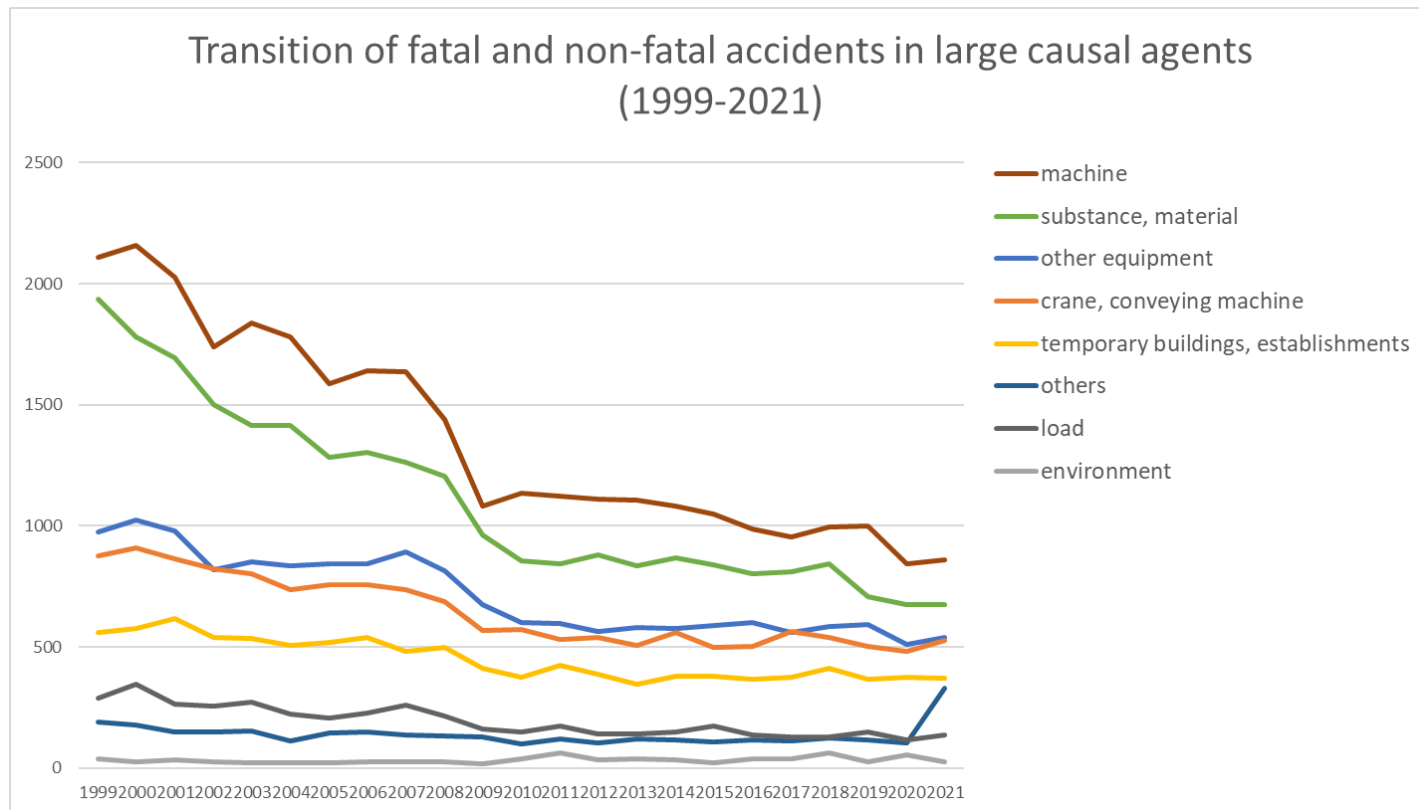
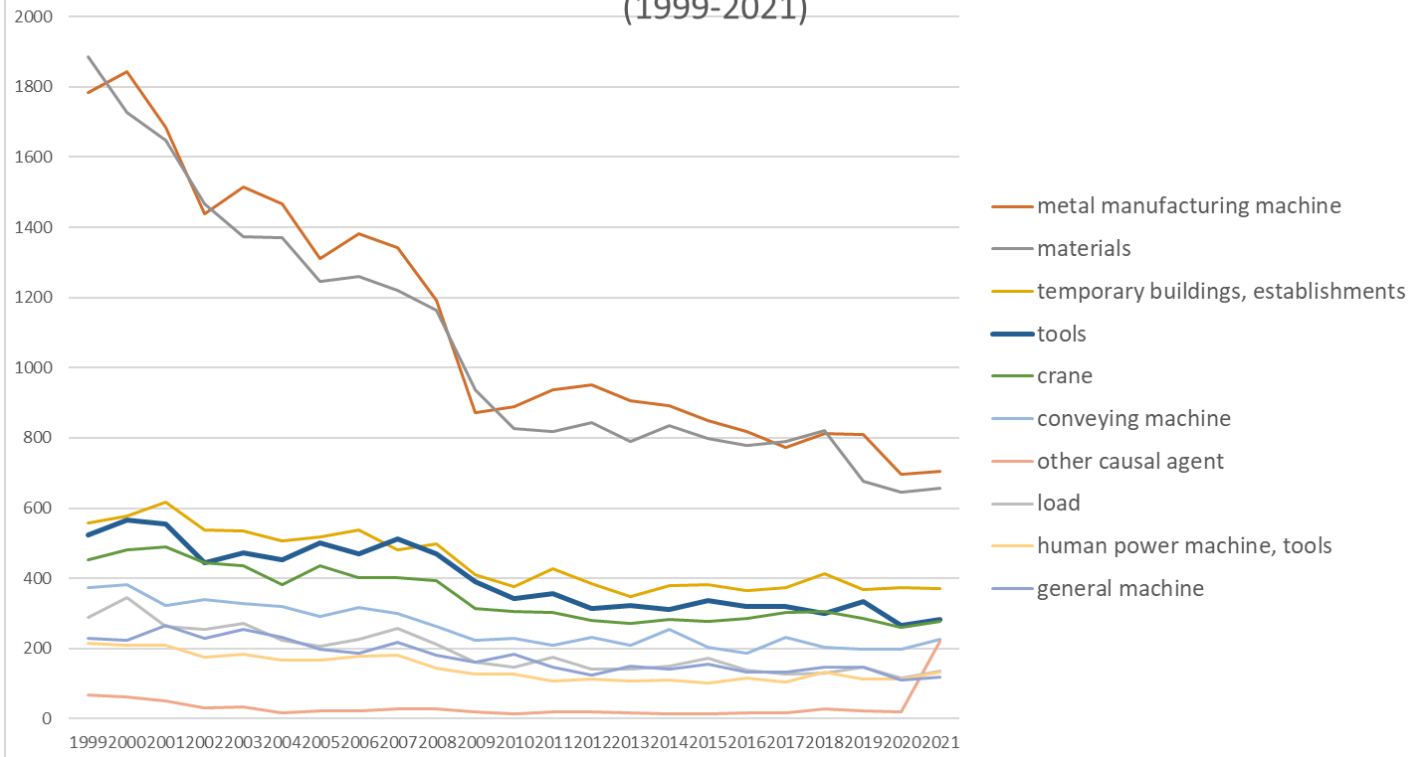


Transition of fatal and non-fatal accidents in each element like as causal agents, type of accidents, etc. in code no. 011209 other metal products (1999-2021)



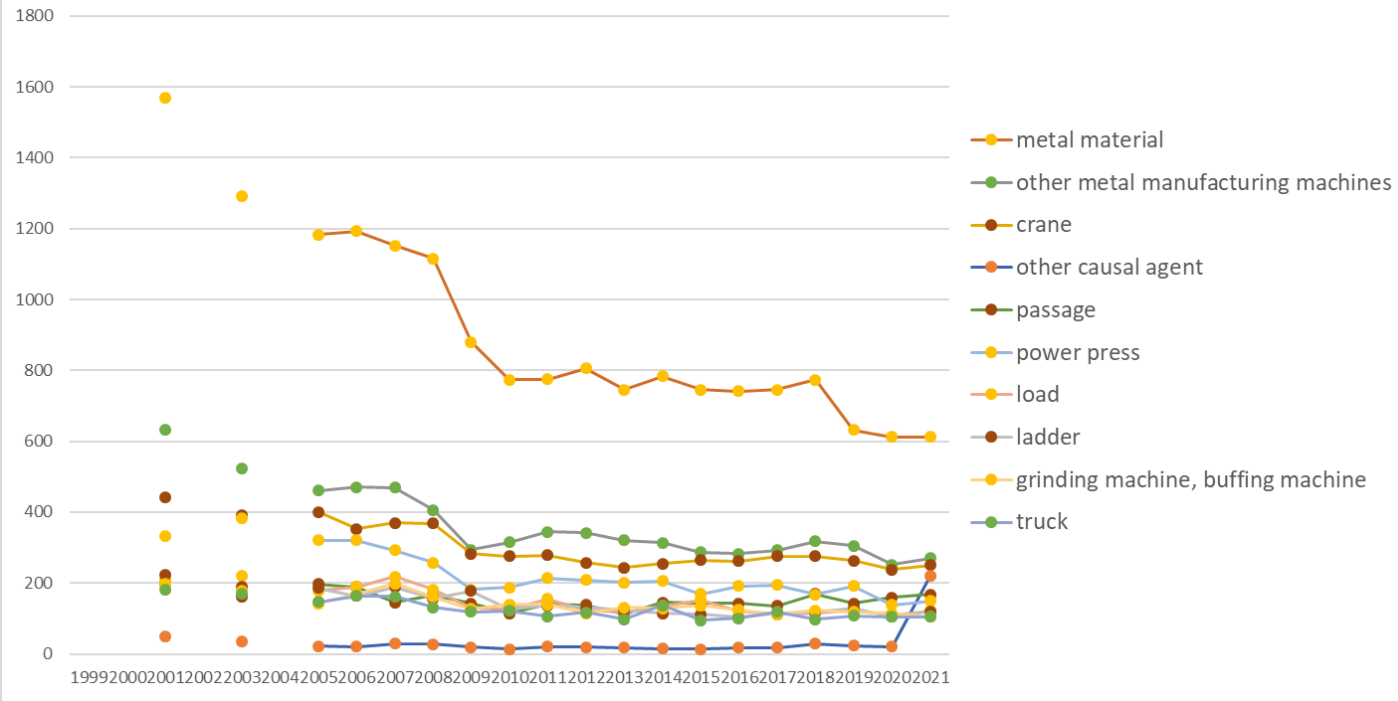
Transition of fatal and non-fatal accidents in large causal agents in code no. 011209 other metal products (1999-2021)

Transition of fatal and non-fatal accidents in top 10 middle causal agents
(1999-2021)



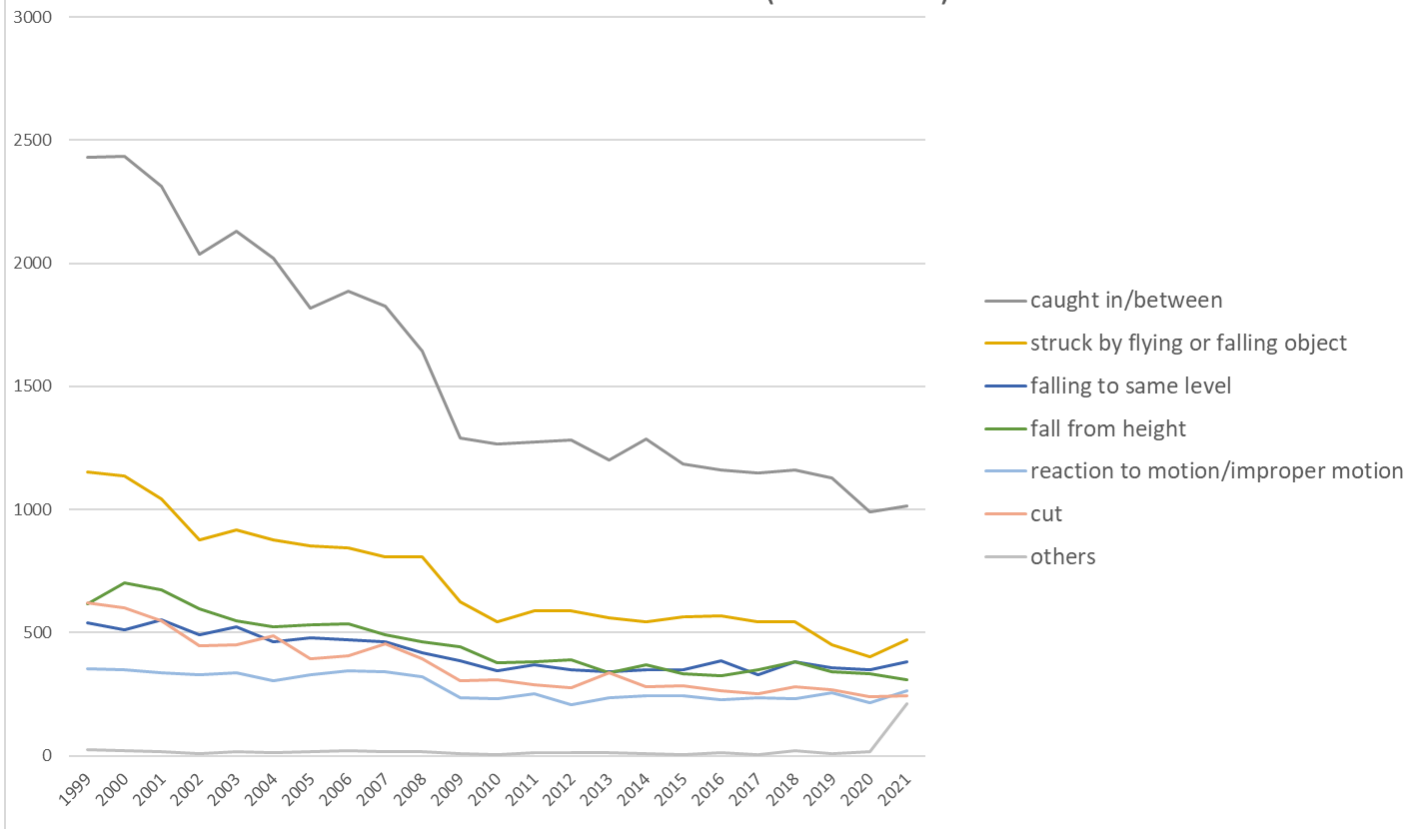
Transition of fatal and non-fatal accidents in middle causal agents in code no. 011209 other metal products (1999-2021)

Transition of fatal and non-fatal accidents in top 10 small causal agents (1999-2021)



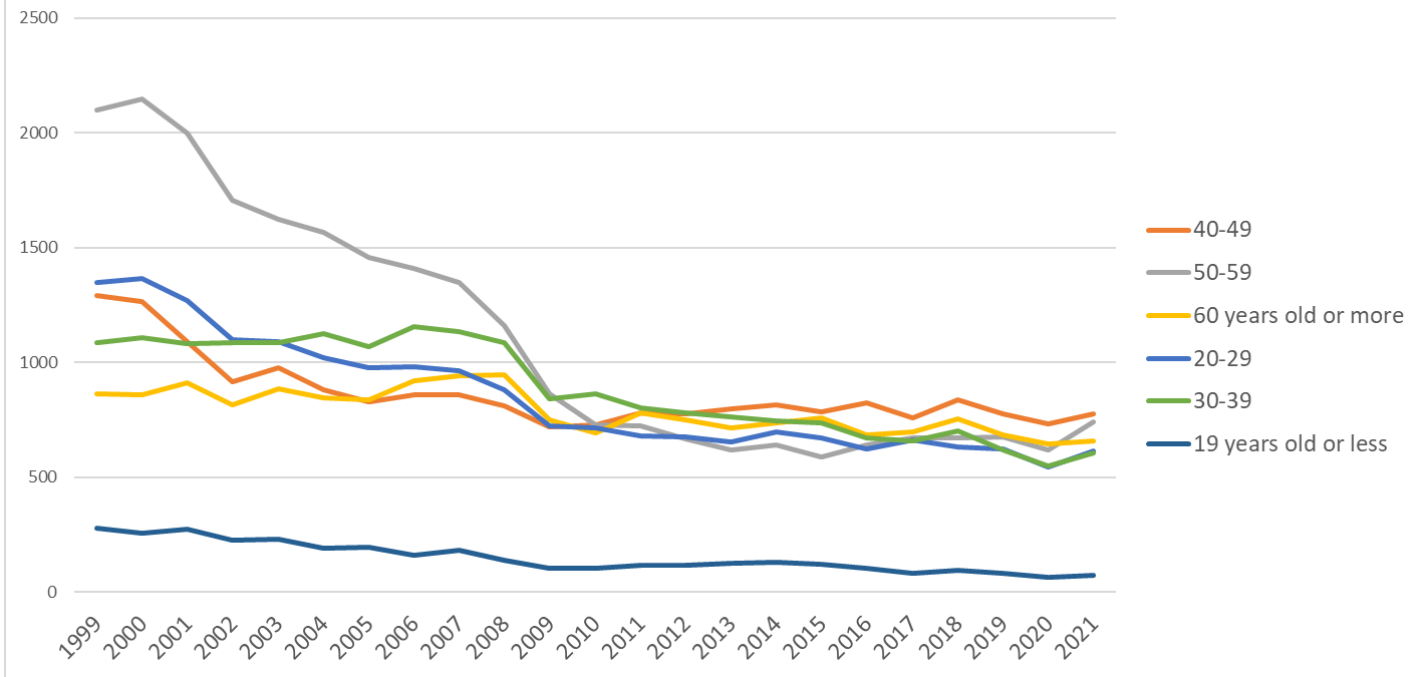
Transition of fatal and non-fatal accidents in small causal agents in code no. 011209 other metal products (1999-2021)

Transition of fatal and non-fatal accidents in top 7 type of accidents
(1999-2021)



Transition of fatal and non-fatal accidents in type of accidents in code no. 011209 other metal products (1999-2021)

Transition of fatal and non-fatal accidents in workers ages (1999-2021)



Transition of fatal and non-fatal accidents in workers ages in code no. 011209 other metal products (1999-2021)

16	fire	8	4	6	8	5	12	6	8	8	11	13	8	1	7	15	7	7	4	5	7	2	3	1	156	fire
13	electric shock	8	7	5	4	6	4	8	2	4	7	7	7	7	5	6	1	5	6	4	8	3	1		115	electric shock
18	traffic accident (others)	4		1			1	2	3	4					1	1	1								18	traffic accident (others)
10	drown		1		1									12					1						15	drown
	total	6,967	7,001	6,626	5,847	5,895	5,633	5,360	5,483	5,428	5,018	4,004	3,825	3,878	3,763	3,676	3,766	3,661	3,549	3,538	3,694	3,457	3,157	3,464	106,690	total

Transition of fatal and non-fatal accidents in workers ages in code no. 011209 other metal products (1999-2021)

code	Age	1999	2000	2001	2002	2003	2004	2005	2006	2007	2008	2009	2010	2011	2012	2013	2014	2015	2016	2017	2018	2019	2020	2021	total	Age
4	40-49	1,290	1,266	1,091	915	976	879	827	860	859	810	720	726	779	774	798	814	786	824	760	839	775	732	776	19,876	40-49
5	50-59	2,098	2,149	1,997	1,706	1,625	1,568	1,457	1,408	1,348	1,160	864	726	722	665	620	639	590	640	673	673	677	619	740	25,364	50-59
6	60 years old or more	862	857	912	814	883	847	839	919	941	946	752	694	779	751	715	737	759	686	699	754	683	645	657	18,131	60 years old or more
2	20-29	1,349	1,366	1,269	1,101	1,092	1,021	975	980	965	880	722	714	680	674	653	699	670	625	663	632	624	546	613	19,513	20-29
3	30-39	1,088	1,106	1,082	1,085	1,088	1,127	1,067	1,154	1,133	1,084	843	863	802	781	763	745	735	672	660	700	618	551	605	20,352	30-39
1	19 years old or less	280	257	275	226	231	191	195	162	182	138	103	102	116	118	127	132	121	102	83	96	80	64	73	3,454	19 years old or less
	total	6,967	7,001	6,626	5,847	5,895	5,633	5,360	5,483	5,428	5,018	4,004	3,825	3,878	3,763	3,676	3,766	3,661	3,549	3,538	3,694	3,457	3,157	3,464	106,690	total

Transition of fatal and non-fatal accidents in workers scales in code no. 011209 other metal products (1999-2021)

code	Workers scale	1999	2000	2001	2002	2003	2004	2005	2006	2007	2008	2009	2010	2011	2012	2013	2014	2015	2016	2017	2018	2019	2020	2021	total	Workers scale
2	10-29	2,494	2,370	2,277	2,026	2,011	1,976	1,862	1,929	1,892	1,788	1,395	1,360	1,352	1,401	1,316	1,370	1,349	1,273	1,269	1,270	1,191	1,120	1,193	37,484	10-29
1	9 workers or less	2,827	2,883	2,739	2,414	2,421	2,326	2,155	2,086	1,956	1,776	1,454	1,342	1,398	1,208	1,235	1,183	1,124	1,069	1,033	1,108	954	889	813	38,393	9 workers or less
3	30-49	795	844	794	690	723	665	700	726	718	663	540	516	513	538	546	593	599	598	573	577	566	536	601	14,614	30-49
4	50-99	534	549	492	444	447	411	378	445	509	446	359	364	346	352	332	363	350	350	410	392	438	351	438	9,500	50-99

28	Hyogo	342	425	391		348		345	344	334	327	252	257	263	229	213	202	231	188	210	238	178	187	176	5,680	Hyogo
12	Chiba	288	291	310		297		265	265	248	250	237	217	196	189	161	194	208	181	161	170	173	182	162	4,645	Chiba
11	Saitama	303	257	273		277		263	256	233	256	205	165	171	188	187	199	150	187	148	164	171	172	158	4,383	Saitama
22	Shizuoka	276	263	236		219		205	220	196	217	152	155	144	158	145	135	154	128	145	163	168	145	137	3,761	Shizuoka
40	Fukuoka	251	267	271		216		182	179	254	212	159	126	166	136	147	151	159	142	149	146	126	110	134	3,683	Fukuoka
14	Kanagawa	312	321	318		245		227	238	196	192	176	156	145	141	145	149	151	118	138	137	140	105	127	3,877	Kanagawa
15	Niigata	235	203	183		166		118	178	160	129	103	111	109	104	111	124	104	102	87	98	124	114	122	2,785	Niigata
9	Tochigi	116	116	107		102		110	95	89	94	88	51	66	70	68	64	74	93	75	74	60	54	119	1,785	Tochigi
8	Ibaraki	186	214	182		176		130	163	139	140	102	111	116	147	143	130	116	129	125	130	121	92	116	2,908	Ibaraki
34	Hiroshima	256	257	233		211		206	195	175	174	120	123	149	138	128	132	118	138	126	141	106	93	107	3,326	Hiroshima
10	Gunma	198	198	165		175		173	157	156	166	102	101	99	109	105	99	91	97	93	107	83	95	90	2,659	Gunma
21	Gifu	153	160	129		138		117	136	119	119	85	99	99	99	86	96	96	93	87	96	81	73	90	2,251	Gifu
1	Hokkaido	257	246	229		166		164	164	157	150	108	96	97	92	96	108	115	97	113	101	89	96	89	2,830	Hokkaido
33	Okayama	136	116	120		111		97	108	113	76	68	65	69	69	67	67	74	62	74	69	62	62	89	1,774	Okayama
24	Mie	160	160	137		137		108	100	129	124	84	85	97	75	93	96	106	80	80	74	85	63	69	2,142	Mie
20	Nagano	85	90	82		78		84	75	64	73	63	58	54	65	50	54	58	49	63	56	57	53	66	1,377	Nagano
16	Toyama	117	126	124		88		81	89	60	88	76	75	58	67	69	58	51	68	74	64	56	52	58	1,599	Toyama
13	Tokyo	237	201	204		173		140	133	150	128	97	85	83	92	73	83	87	91	75	95	57	57	57	2,398	Tokyo
25	Shiga	54	79	74		88		63	65	67	62	52	51	45	41	64	66	51	52	59	54	49	38	54	1,228	Shiga
37	Kagawa	102	96	105		92		83	65	100	76	51	65	59	62	58	50	55	49	53	52	67	57	51	1,448	Kagawa
26	Kyoto	104	105	113		55		65	71	83	71	55	55	55	56	58	51	55	40	51	38	47	48	51	1,327	Kyoto
42	Nagasaki	93	56	72		55		63	64	68	71	47	37	50	55	37	48	48	54	42	46	67	48	50	1,171	Nagasaki
35	Yamaguchi	102	66	92		96		64	77	62	68	38	47	42	44	34	42	43	45	40	37	46	47	48	1,180	Yamaguchi
29	Nara	60	57	36		49		54	43	48	41	27	39	34	46	38	53	37	29	27	44	40	28	48	878	Nara
4	Miyagi	80	65	61		57		57	53	54	55	44	54	43	39	46	42	43	49	42	54	37	40	46	1,061	Miyagi

6	Yamagata	52	51	51		47		39	56	45	33	33	30	31	26	42	28	38	33	28	33	30	26	40	792	Yamagata
30	Wakayama	52	59	46		50		45	44	55	58	47	39	45	54	22	34	36	41	41	37	24	30	38	897	Wakayama
7	Fukushima	90	98	98		76		86	68	80	59	54	51	61	59	48	59	49	29	41	42	40	41	37	1,266	Fukushima
43	Kumamoto	67	82	70		66		47	59	57	52	40	35	46	28	23	36	29	35	32	45	35	25	33	942	Kumamoto
17	Ishikawa	50	79	59		41		59	55	60	40	25	25	37	33	51	33	31	29	45	39	19	24	32	866	Ishikawa
41	Saga	46	34	35		31		20	23	38	48	26	30	35	30	19	36	32	33	30	32	19	32	31	660	Saga
38	Ehime	106	98	97		98		79	80	88	83	63	64	59	47	39	49	48	47	54	43	50	45	30	1,367	Ehime
5	Akita	51	46	32		23		25	35	23	26	35	13	26	16	34	26	26	22	26	16	20	13	24	558	Akita
2	Aomori	38	34	42		25		33	32	27	34	19	13	23	25	19	21	20	17	30	31	28	20	22	553	Aomori
44	Oita	49	64	53		43		29	56	39	36	30	32	29	30	28	37	28	25	30	33	35	29	21	756	Oita
18	Fukui	41	45	40		27		32	27	39	33	26	24	25	34	34	23	30	35	27	30	29	22	21	644	Fukui
46	Kagoshima	43	39	41		21		27	25	28	16	28	18	27	13	11	18	10	15	27	18	24	23	20	492	Kagoshima
3	Iwate	49	62	45		47		37	30	22	20	16	26	18	26	25	22	22	27	17	17	22	21	19	590	Iwate
19	Yamanashi	24	23	27		26		24	17	20	28	14	15	13	14	23	20	18	16	18	18	18	22	18	416	Yamanashi
45	Miyazaki	23	21	26		23		27	23	25	24	14	18	14	14	11	11	16	15	14	16	10	12	14	371	Miyazaki
36	Tokushima	33	30	22		23		21	17	22	9	11	18	14	15	20	14	13	15	17	17	13	12	13	369	Tokushima
47	Okinawa	15	20	13		10		10	7	8	13	6	9	7	9	9	13	7	9	13	6	10	6	13	213	Okinawa
39	Kochi	29	36	19		36		32	29	31	26	17	11	13	19	15	23	17	10	17	11	24	10	11	436	Kochi
31	Tottori	16	18	15		9		10	13	10	11	8	6	5	7	8	11	7	6	11	10	7	7	11	206	Tottori
32	Shimane	14	16	26		12		19	14	12	14	17	14	7	4	4	11	8	12	10	18	6	12	7	257	Shimane
	total	6,967	7,001	6,626		5,895		5,360	5,483	5,428	5,018	4,004	3,825	3,878	3,763	3,676	3,766	3,661	3,549	3,538	3,694	3,457	3,157	3,464	95,210	total

Data source : <https://anzeninfo.mhlw.go.jp/user/anzen/tok/anst00.htm>

Return to https://www.jisha.or.jp/english/statistics/202211_23.html