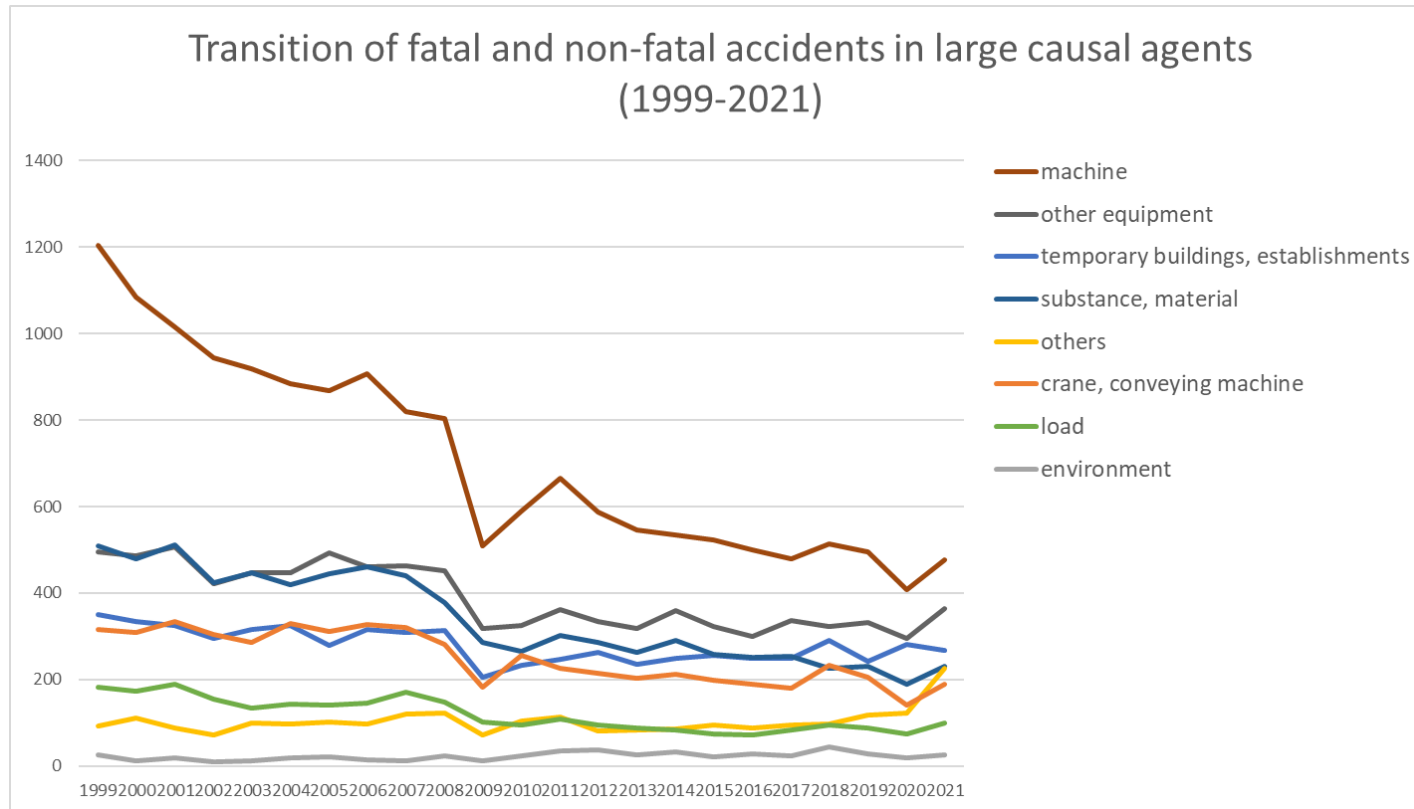
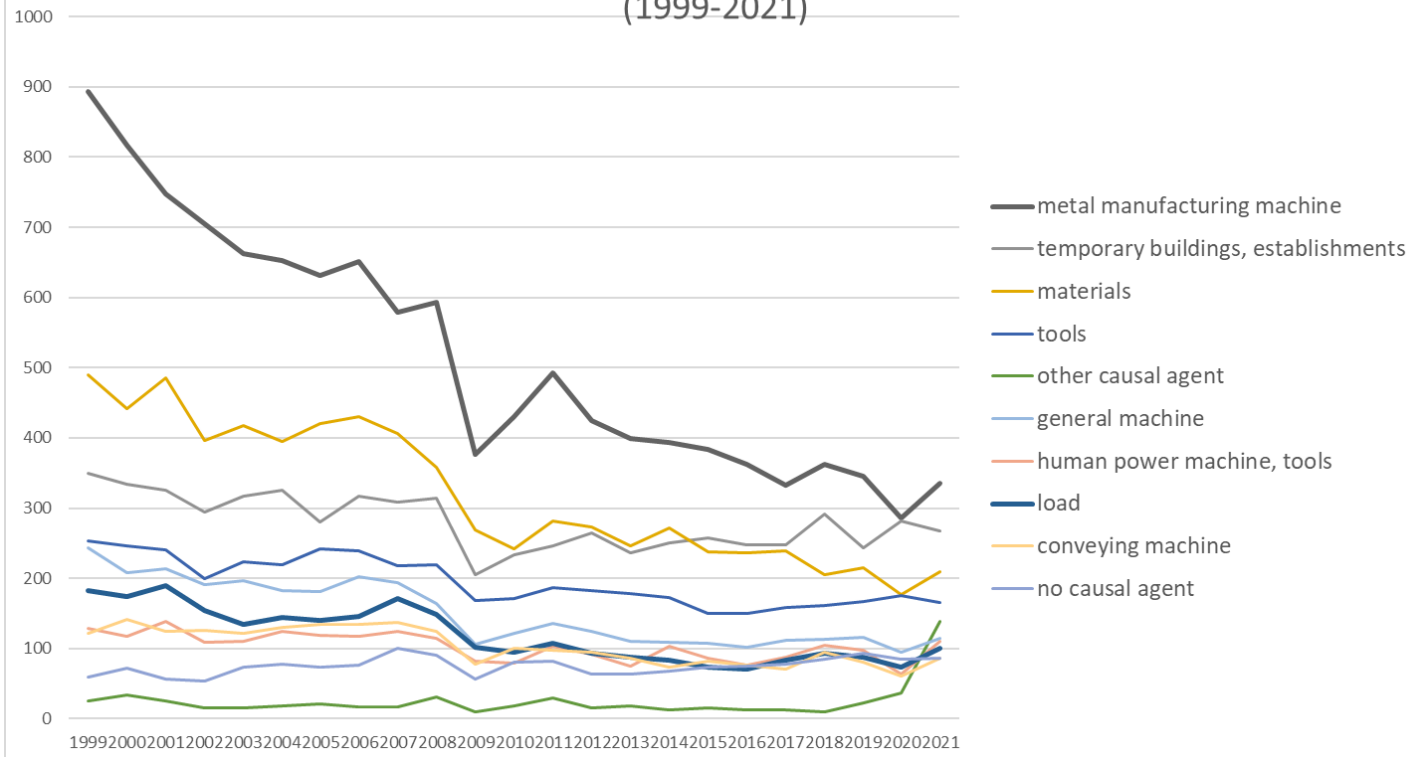


Transition of fatal and non-fatal accidents in each element like as causal agents, type of accidents, etc. in code no. 0113 machine products (1999-2021)



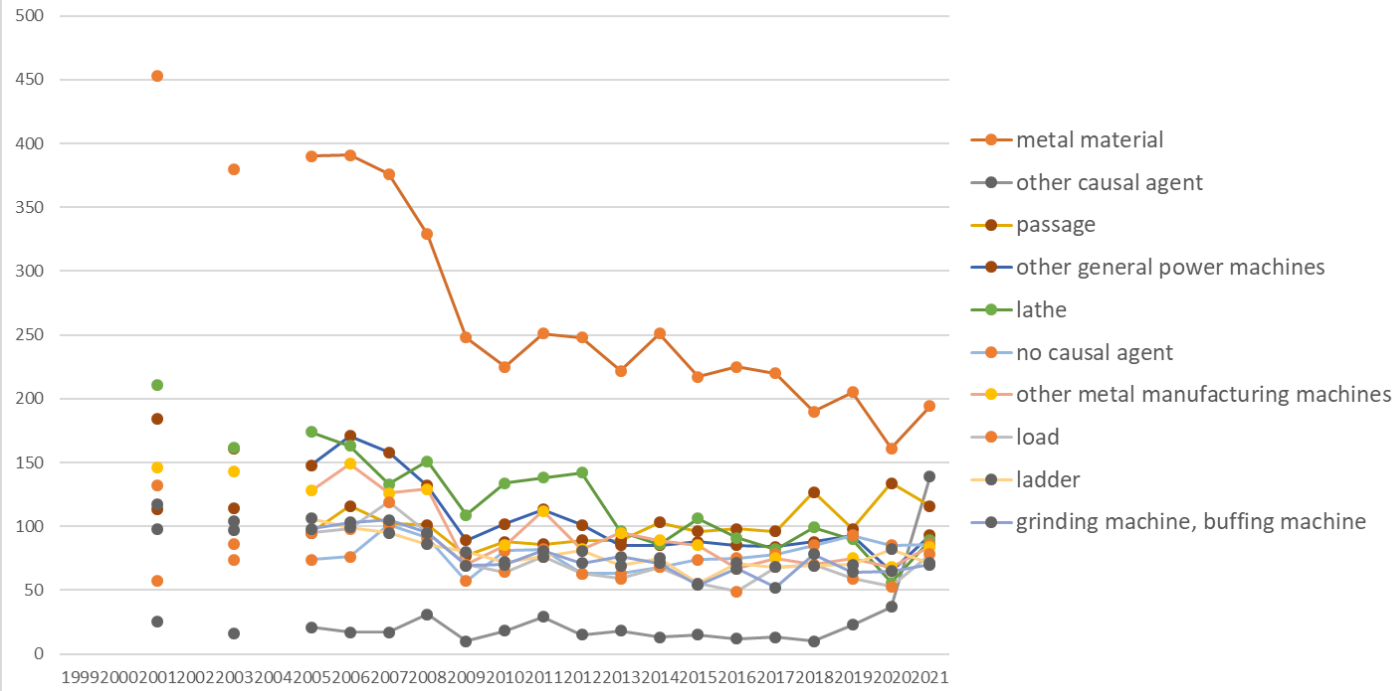
Transition of fatal and non-fatal accidents in large causal agents in code no. 0113 machine products (1999-2021)

Transition of fatal and non-fatal accidents in top 10 middle causal agents
(1999-2021)



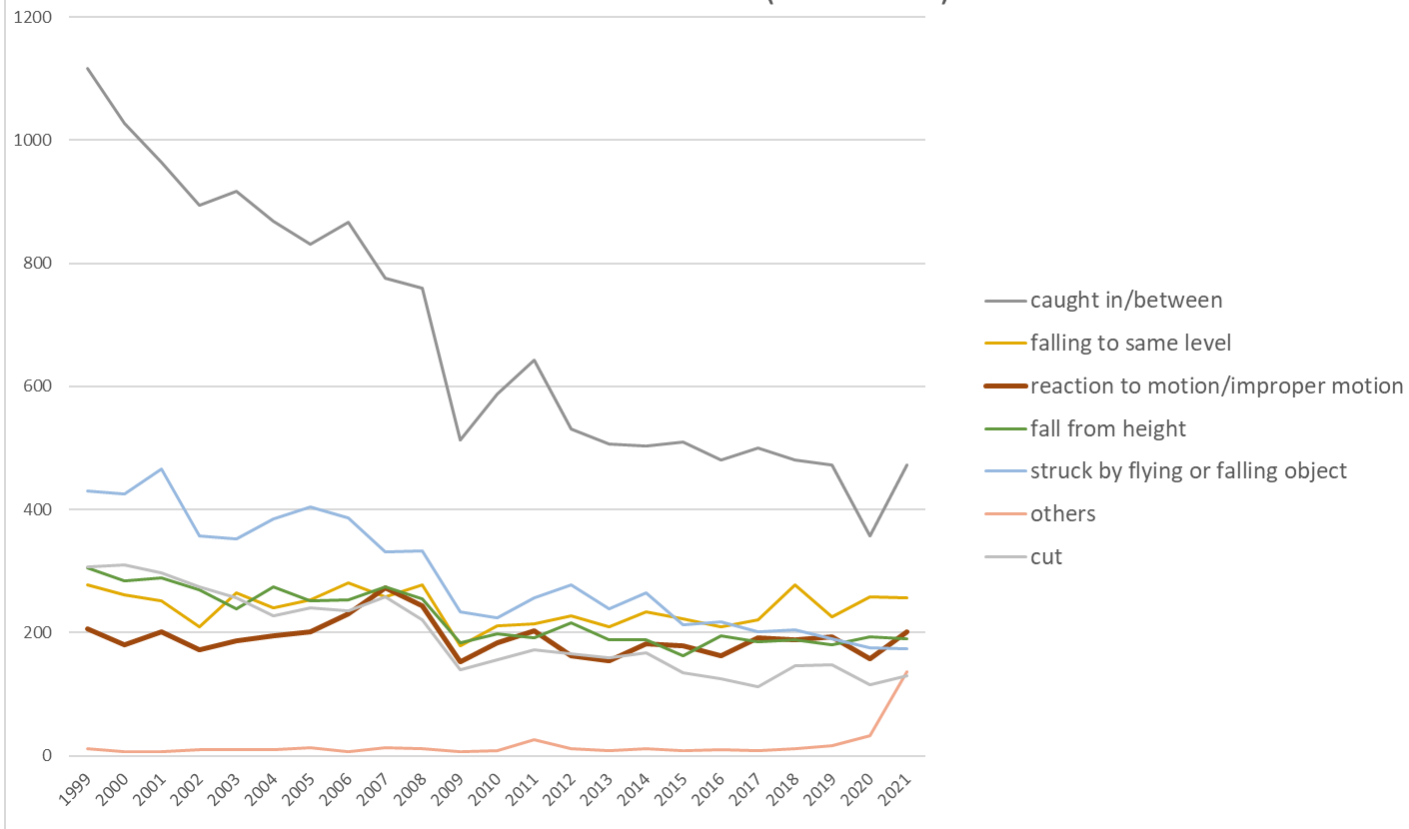
Transition of fatal and non-fatal accidents in middle causal agents in code no. 0113 machine products (1999-2021)

Transition of fatal and non-fatal accidents in top 10 small causal agents (1999-2021)



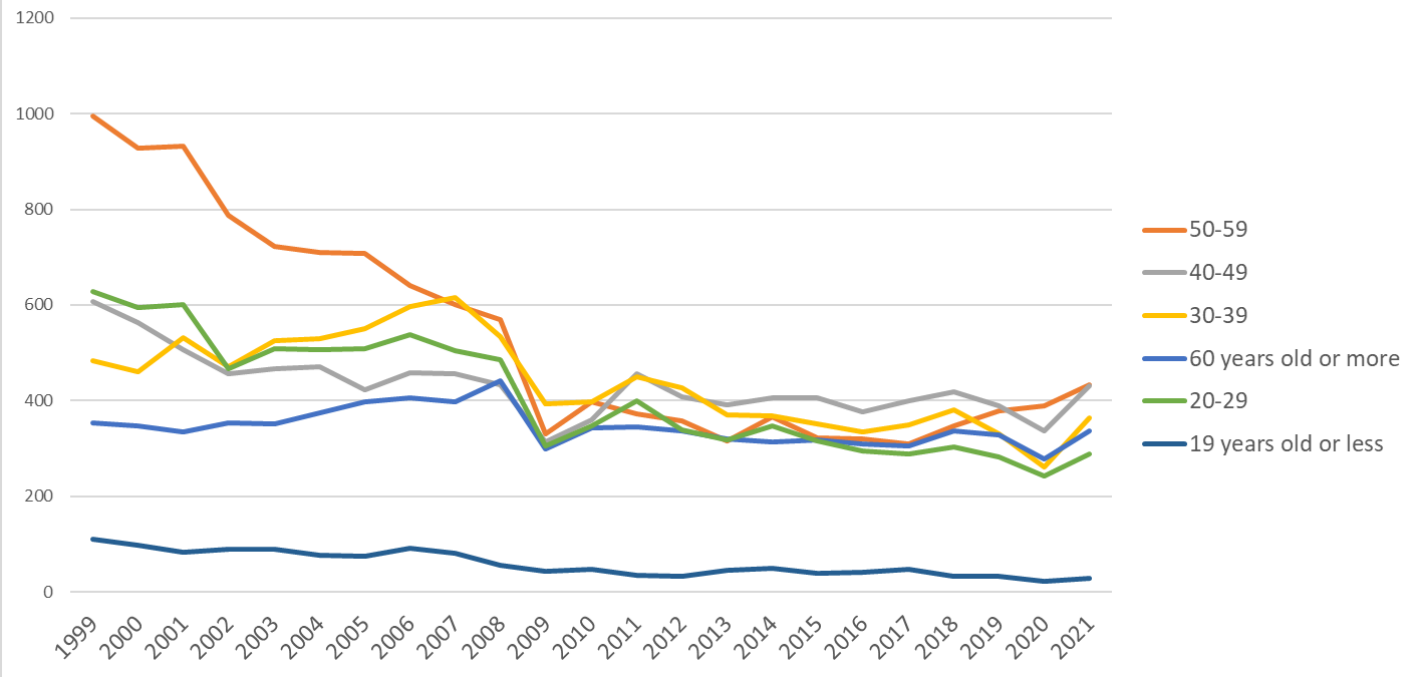
Transition of fatal and non-fatal accidents in small causal agents in code no. 0113 machine products (1999-2021)

Transition of fatal and non-fatal accidents in top 7 type of accidents
(1999-2021)



Transition of fatal and non-fatal accidents in type of accidents in code no. 0113 machine products (1999-2021)

Transition of fatal and non-fatal accidents in workers ages (1999-2021)



Transition of fatal and non-fatal accidents in workers ages in code no. 0113 machine products (1999-2021)

22	Shizuoka	155	142	161		152		129	157	155	141	100	86	85	92	75	81	94	80	85	106	85	80	97	2,338	Shizuoka
28	Hyogo	186	160	168		153		136	145	146	133	94	103	111	98	92	92	74	90	93	88	90	91	93	2,436	Hyogo
25	Shiga	53	58	47		45		65	60	54	44	28	31	46	24	38	30	38	38	31	45	29	37	84	925	Shiga
14	Kanagawa	185	149	142		102		102	115	116	110	84	90	95	105	93	75	75	72	58	68	68	50	68	2,022	Kanagawa
34	Hiroshima	104	119	115		103		108	90	104	103	70	70	61	70	66	74	73	59	79	71	65	45	64	1,713	Hiroshima
40	Fukuoka	99	85	89		79		80	68	68	68	47	61	62	55	66	52	59	50	54	61	57	51	64	1,375	Fukuoka
8	Ibaraki	51	68	58		59		53	59	75	67	31	69	55	52	32	55	50	51	54	53	73	60	60	1,185	Ibaraki
20	Nagano	52	67	79		63		69	78	50	69	35	40	76	50	59	57	63	53	49	57	51	36	59	1,212	Nagano
12	Chiba	101	88	65		71		49	67	58	59	51	59	46	61	39	43	43	44	38	38	57	49	58	1,184	Chiba
26	Kyoto	60	54	56		49		50	43	55	50	31	35	51	33	36	34	47	23	37	45	44	42	56	931	Kyoto
21	Gifu	98	90	82		78		69	84	75	81	46	50	56	57	58	51	61	53	54	52	50	37	54	1,336	Gifu
15	Niigata	89	92	114		92		93	84	83	72	27	49	68	48	50	58	59	54	72	48	65	49	53	1,419	Niigata
17	Ishikawa	61	49	54		53		70	73	68	78	33	47	54	48	44	48	43	41	45	47	29	28	53	1,066	Ishikawa
24	Mie	85	64	64		58		65	76	68	61	34	47	69	47	37	51	47	48	42	57	59	31	51	1,161	Mie
33	Okayama	41	53	61		40		39	57	53	48	23	27	40	40	35	41	26	30	37	44	28	38	40	841	Okayama
10	Gunma	83	84	81		61		50	80	75	58	42	44	39	50	33	46	53	36	55	53	52	41	39	1,155	Gunma
7	Fukushima	41	28	32		21		40	32	41	41	25	18	45	22	32	26	15	34	21	25	17	18	31	605	Fukushima
13	Tokyo	145	122	145		103		106	90	91	80	61	54	58	57	54	49	52	32	38	44	40	32	30	1,483	Tokyo
6	Yamagata	33	44	30		24		32	36	35	38	23	16	18	27	25	29	21	31	27	29	22	21	28	589	Yamagata
9	Tochigi	51	67	39		42		52	49	58	49	23	29	39	40	29	36	28	23	45	37	40	42	27	845	Tochigi
16	Toyama	44	38	45		36		46	40	48	47	36	34	31	24	20	22	24	31	30	27	29	25	27	704	Toyama
38	Ehime	67	57	68		57		50	55	43	51	48	40	50	41	33	38	29	42	43	36	32	28	26	934	Ehime
1	Hokkaido	57	59	52		55		50	36	42	37	34	42	29	38	35	28	25	37	26	25	32	34	25	798	Hokkaido
3	Iwate	32	15	26		20		30	10	26	14	18	23	17	20	16	13	12	8	11	12	10	15	23	371	Iwate
37	Kagawa	27	35	34		23		44	35	28	30	20	21	28	24	23	28	16	22	21	36	26	17	22	560	Kagawa

4	Miyagi	44	42	18		24		24	25	19	24	20	12	23	19	15	9	19	20	18	17	15	18	22	447	Miyagi
19	Yamanashi	21	14	17		13		27	29	27	32	17	21	19	16	14	18	11	13	20	21	17	12	22	401	Yamanashi
29	Nara	18	13	20		16		24	19	19	20	11	12	19	11	8	11	16	16	5	12	15	12	21	318	Nara
18	Fukui	35	31	25		19		18	23	31	22	13	9	20	25	13	23	21	13	10	20	16	18	16	421	Fukui
42	Nagasaki	32	36	37		22		29	33	22	33	22	24	23	27	20	38	30	20	17	25	21	14	15	540	Nagasaki
30	Wakayama	23	30	24		25		25	22	26	27	16	14	23	17	23	18	15	16	14	6	21	10	15	410	Wakayama
44	Oita	12	5	17		19		11	23	18	22	17	12	7	10	10	10	6	3	4	2	8	9	15	240	Oita
35	Yamaguchi	57	36	39		36		26	39	43	37	29	22	24	11	16	21	21	17	18	25	20	26	14	577	Yamaguchi
5	Akita	25	31	23		27		19	18	20	19	14	22	12	16	15	14	13	11	14	20	17	14	14	378	Akita
45	Miyazaki	16	14	15		14		12	8	10	12	7	5	8	7	11	6	8	12	7	11	14	2	14	213	Miyazaki
39	Kochi	30	20	33		20		21	25	24	17	23	20	16	25	18	18	24	18	17	18	14	22	12	435	Kochi
41	Saga	13	25	22		16		23	28	29	22	17	14	12	15	16	19	15	11	15	13	16	12	12	365	Saga
32	Shimane	14	13	7		19		16	12	11	15	4	13	4	9	12	7	8	13	8	13	7	5	9	219	Shimane
43	Kumamoto	23	14	15		12		22	16	26	19	11	11	10	6	10	17	14	11	15	12	10	7	7	288	Kumamoto
36	Tokushima	18	13	18		20		17	23	13	13	8	16	17	11	12	13	13	4	10	10	9	7	7	272	Tokushima
46	Kagoshima	20	15	13		11		12	9	6	10	10	5	7	5	5	7	9	7	6	10	6	12	7	192	Kagoshima
2	Aomori	13	6	14		13		6	14	13	10	9	9	8	11	5	10	10	11	6	6	7	10	5	196	Aomori
31	Tottori	10	13	4		5		6	7	5	2	3		3	4	5	5	1	1	2	2	8	5	4	95	Tottori
47	Okinawa	2	3			1		1	1			1								1	1			1	12	Okinawa
	total	3,177	2,991	2,989		2,661		2,660	2,732	2,657	2,520	1,687	1,892	2,058	1,898	1,763	1,850	1,752	1,676	1,701	1,820	1,742	1,532	1,881	45,639	total

Data source : <https://anzeninfo.mhlw.go.jp/user/anzen/tok/anst00.htm>

Return to https://www.jisha.or.jp/english/statistics/202211_23.html