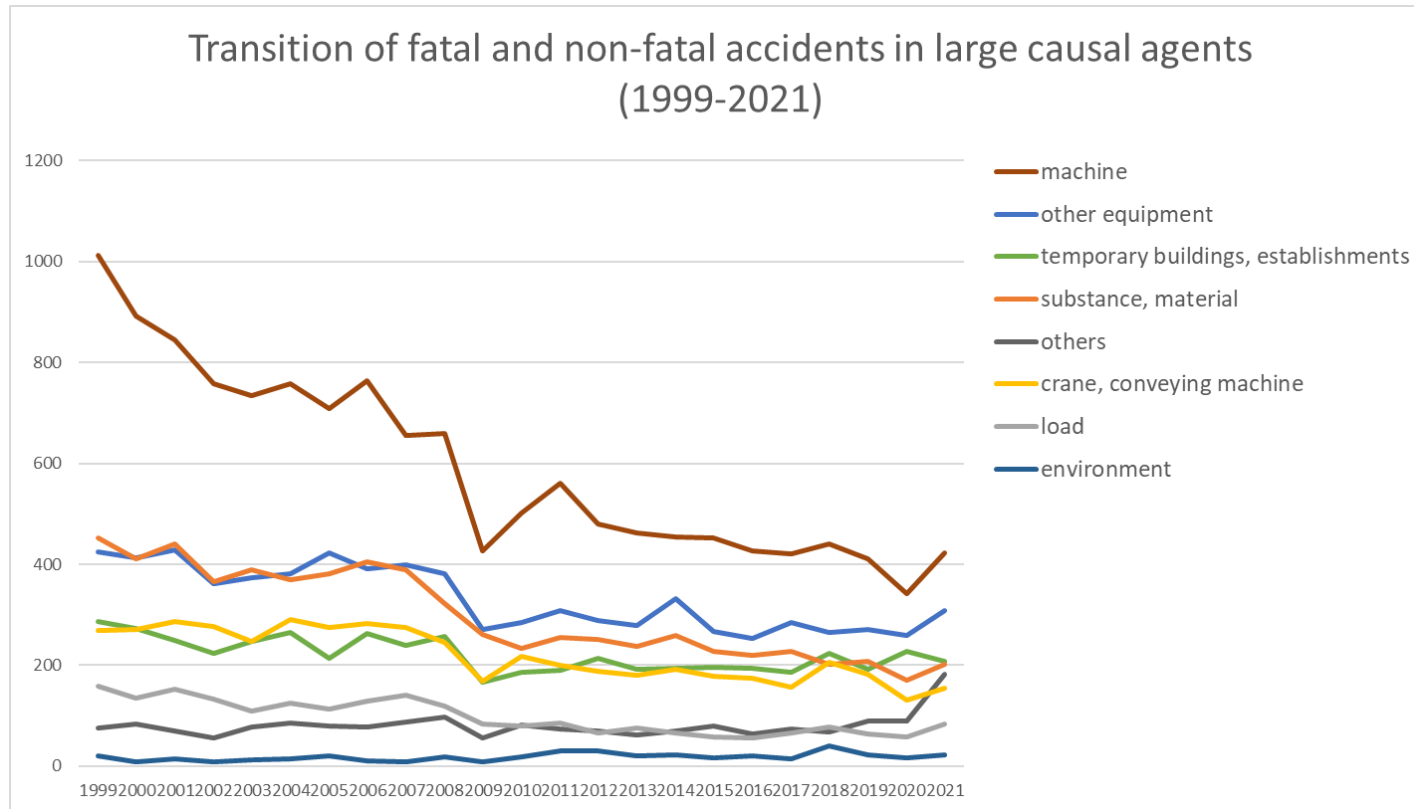
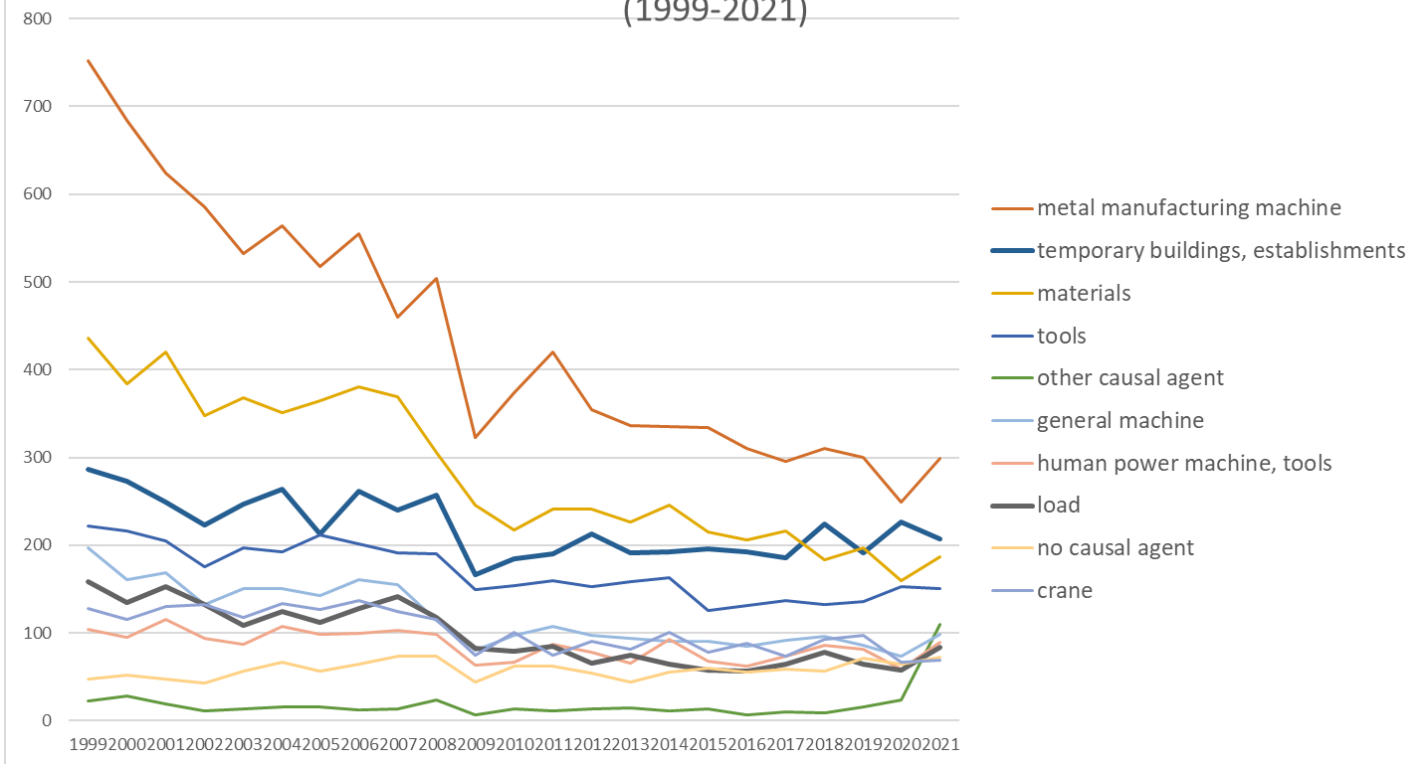


Transition of fatal and non-fatal accidents in each element like as causal agents, type of accidents, etc. in code no. 011301 machine products (1999-2021)



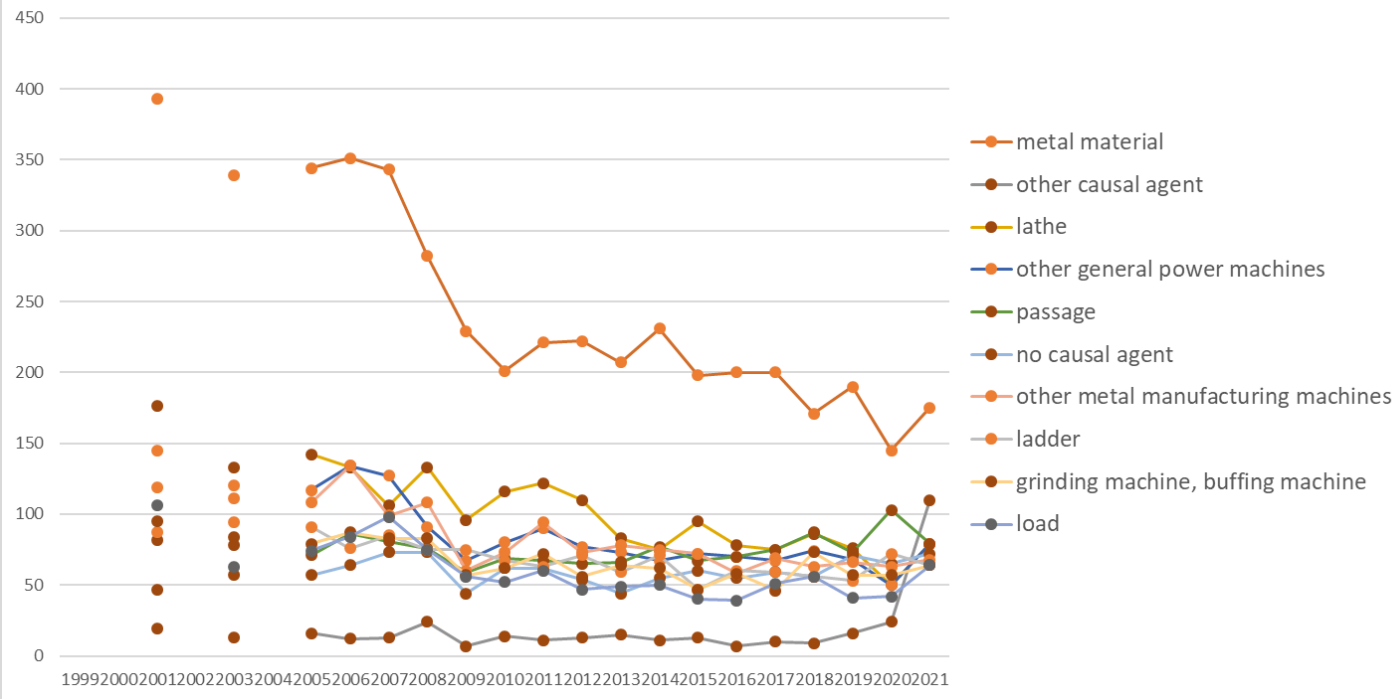
Transition of fatal and non-fatal accidents in large causal agents in code no. 011301 machine products (1999-2021)

Transition of fatal and non-fatal accidents in top 10 middle causal agents
(1999-2021)



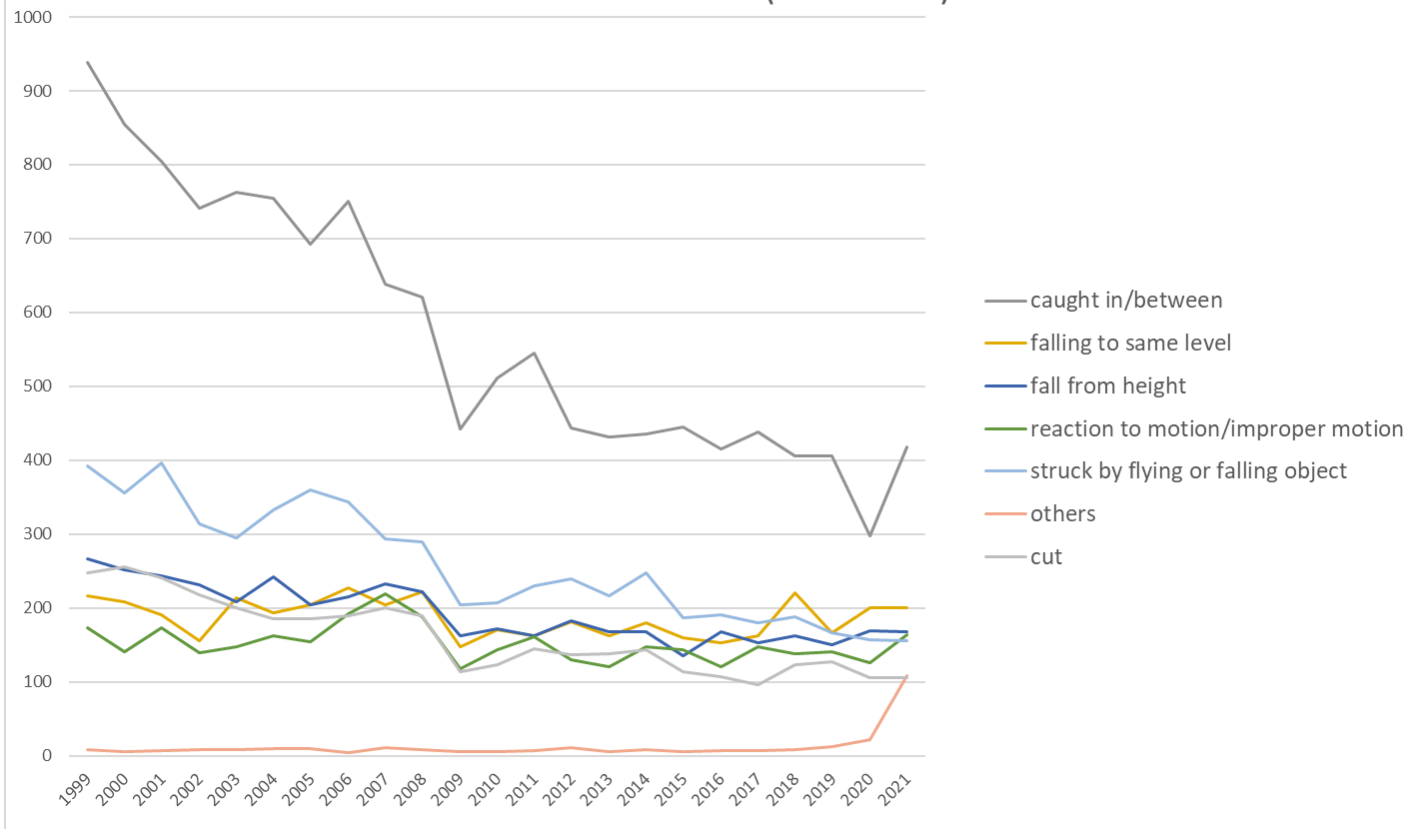
Transition of fatal and non-fatal accidents in middle causal agents in code no. 011301 machine products (1999-2021)

Transition of fatal and non-fatal accidents in top 10 small causal agents
(1999-2021)



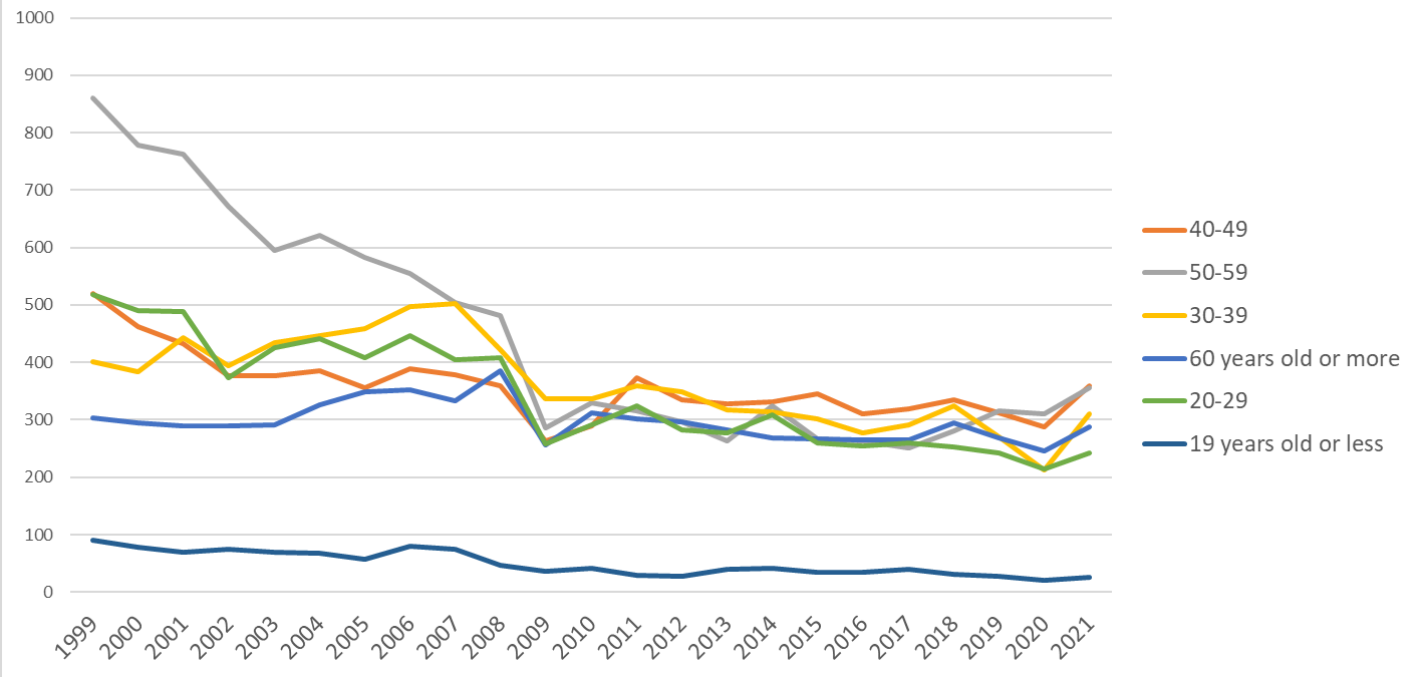
Transition of fatal and non-fatal accidents in small causal agents in code no. 011301 machine products (1999-2021)

Transition of fatal and non-fatal accidents in top 7 type of accidents
(1999-2021)



Transition of fatal and non-fatal accidents in type of accidents in code no. 011301 machine products (1999-2021)

Transition of fatal and non-fatal accidents in workers ages (1999-2021)



Transition of fatal and non-fatal accidents in workers ages in code no. 011301 machine products (1999-2021)

28	Hyogo	173	140	152		138		125	136	131	126	86	95	102	90	87	85	61	76	79	77	85	82	85	2,211	Hyogo
22	Shizuoka	135	127	142		125		103	136	118	126	91	78	69	82	65	73	80	70	72	93	70	74	79	2,008	Shizuoka
25	Shiga	42	47	32		33		53	50	47	39	24	26	43	23	34	27	34	28	27	35	23	30	76	773	Shiga
34	Hiroshima	92	104	100		91		94	82	97	95	61	62	58	66	59	69	66	56	74	69	62	41	58	1,556	Hiroshima
40	Fukuoka	87	80	75		73		71	57	61	62	44	55	59	48	63	48	55	45	48	57	52	49	57	1,246	Fukuoka
14	Kanagawa	150	130	115		87		86	100	105	96	71	73	78	89	81	63	59	61	47	59	57	38	55	1,700	Kanagawa
17	Ishikawa	55	43	49		50		66	69	62	73	32	46	50	47	42	44	43	35	41	47	28	28	52	1,002	Ishikawa
8	Ibaraki	32	51	48		51		40	49	57	49	29	52	47	46	28	46	43	41	43	44	55	46	51	948	Ibaraki
21	Gifu	87	78	70		64		60	72	61	60	34	40	51	50	55	47	58	46	48	42	41	35	49	1,148	Gifu
26	Kyoto	43	38	31		25		31	32	37	31	20	26	35	26	22	27	30	17	23	24	29	24	46	617	Kyoto
24	Mie	73	56	53		45		51	60	62	50	32	41	58	37	28	43	41	42	38	54	46	25	42	977	Mie
15	Niigata	70	70	95		74		80	71	65	60	23	39	61	38	44	49	49	50	58	36	49	43	41	1,165	Niigata
12	Chiba	92	72	59		64		43	57	40	47	43	54	38	49	35	39	31	34	32	33	39	43	39	983	Chiba
33	Okayama	37	48	57		35		36	51	46	43	22	25	38	36	35	40	25	29	35	43	26	35	36	778	Okayama
10	Gunma	68	66	70		45		44	66	73	49	34	38	28	37	28	43	47	29	47	45	42	36	35	970	Gunma
20	Nagano	39	36	47		34		37	50	35	45	23	27	34	34	42	42	44	33	27	36	32	23	27	747	Nagano
38	Ehime	67	57	66		57		50	53	41	47	44	40	46	40	32	35	28	42	43	33	32	28	26	907	Ehime
6	Yamagata	23	36	21		23		28	28	25	33	18	12	15	21	20	25	17	24	23	25	16	20	26	479	Yamagata
16	Toyama	36	32	39		31		42	34	43	40	33	32	29	20	19	21	21	29	26	26	24	23	25	625	Toyama
1	Hokkaido	53	58	49		50		45	35	40	34	31	40	24	36	35	26	23	35	26	23	29	29	24	745	Hokkaido
37	Kagawa	22	28	24		18		39	30	25	29	17	16	23	23	23	24	12	17	20	31	25	17	21	484	Kagawa
29	Nara	17	13	18		14		18	19	18	20	10	12	18	11	7	11	16	15	5	10	15	12	21	300	Nara
13	Tokyo	113	94	111		71		84	77	66	60	50	35	40	38	37	31	38	25	28	28	28	24	20	1,098	Tokyo
7	Fukushima	34	20	28		14		28	22	31	34	22	11	31	17	22	21	10	21	11	20	13	16	20	446	Fukushima
9	Tochigi	41	47	26		27		33	37	41	36	21	20	27	26	19	19	18	14	29	27	28	22	16	574	Tochigi

4	Miyagi	35	33	14		20		19	17	15	14	12	10	20	11	10	6	13	17	15	14	13	14	16	338	Miyagi
3	Iwate	27	8	16		9		17	7	9	7	11	11	11	14	8	10	8	4	6	6	6	9	16	220	Iwate
42	Nagasaki	25	34	36		22		28	30	20	31	21	22	22	27	20	37	30	18	17	25	20	13	15	513	Nagasaki
19	Yamanashi	12	6	11		6		18	17	18	17	10	13	13	10	10	13	3	9	10	12	12	10	15	245	Yamanashi
30	Wakayama	19	29	22		21		20	20	24	22	14	13	21	14	22	16	14	15	13	5	20	9	14	367	Wakayama
18	Fukui	18	15	15		9		11	19	19	12	8	5	10	20	7	16	14	5	7	9	7	9	14	249	Fukui
35	Yamaguchi	57	34	37		33		25	32	41	34	26	21	22	9	16	18	20	17	18	25	18	23	13	539	Yamaguchi
45	Miyazaki	12	13	13		12		10	5	6	9	5	3	7	4	9	6	6	10	4	9	8	2	13	166	Miyazaki
41	Saga	11	23	21		15		21	28	29	20	15	14	12	14	15	18	15	11	14	13	15	12	12	348	Saga
39	Kochi	27	18	32		18		15	22	19	16	21	18	14	22	18	12	24	16	15	15	13	21	10	386	Kochi
44	Oita	10	4	11		11		7	10	8	16	13	10	4	5	10	8	4	2	2	1	3	6	10	155	Oita
5	Akita	18	16	15		19		13	10	9	12	7	16	5	10	7	7	11	9	10	13	10	6	9	232	Akita
32	Shimane	13	13	5		15		13	10	10	13	4	12	3	8	11	7	8	10	8	11	6	5	8	193	Shimane
36	Tokushima	18	13	18		20		16	23	12	11	8	16	15	11	11	12	13	4	9	9	9	7	7	262	Tokushima
43	Kumamoto	21	11	14		10		19	14	25	17	9	11	5	4	7	14	12	10	14	10	9	5	5	246	Kumamoto
2	Aomori	7	4	10		10		5	12	8	7	6	9	5	5	3	8	5	6	2	2	6	7	5	132	Aomori
31	Tottori	10	12	4		5		5	7	5	2	3		3	3	5	5	1	1	2	2	8	5	4	92	Tottori
46	Kagoshima	18	14	12		11		9	9	4	10	9	4	7	4	4	6	8	6	5	10	6	9	3	168	Kagoshima
47	Okinawa	1	2			1		1				1								1	1				8	Okinawa
	total	2,695	2,486	2,485		2,193		2,211	2,320	2,195	2,102	1,438	1,602	1,701	1,585	1,508	1,587	1,473	1,405	1,427	1,520	1,437	1,290	1,583	38,243	total

Data source : <https://anzeninfo.mhlw.go.jp/user/anzen/tok/anst00.htm>

Return to https://www.jisha.or.jp/english/statistics/202211_23.html