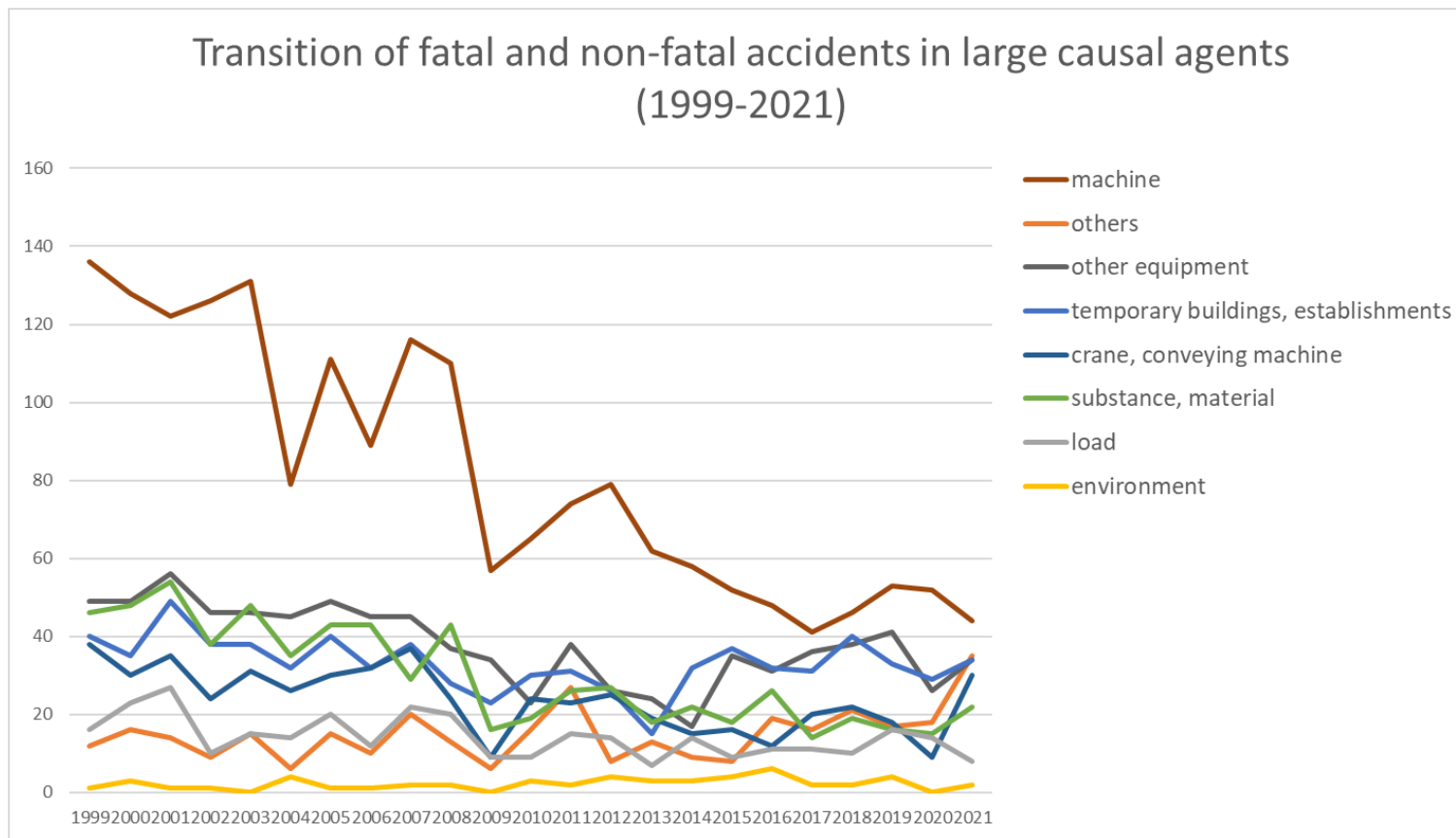
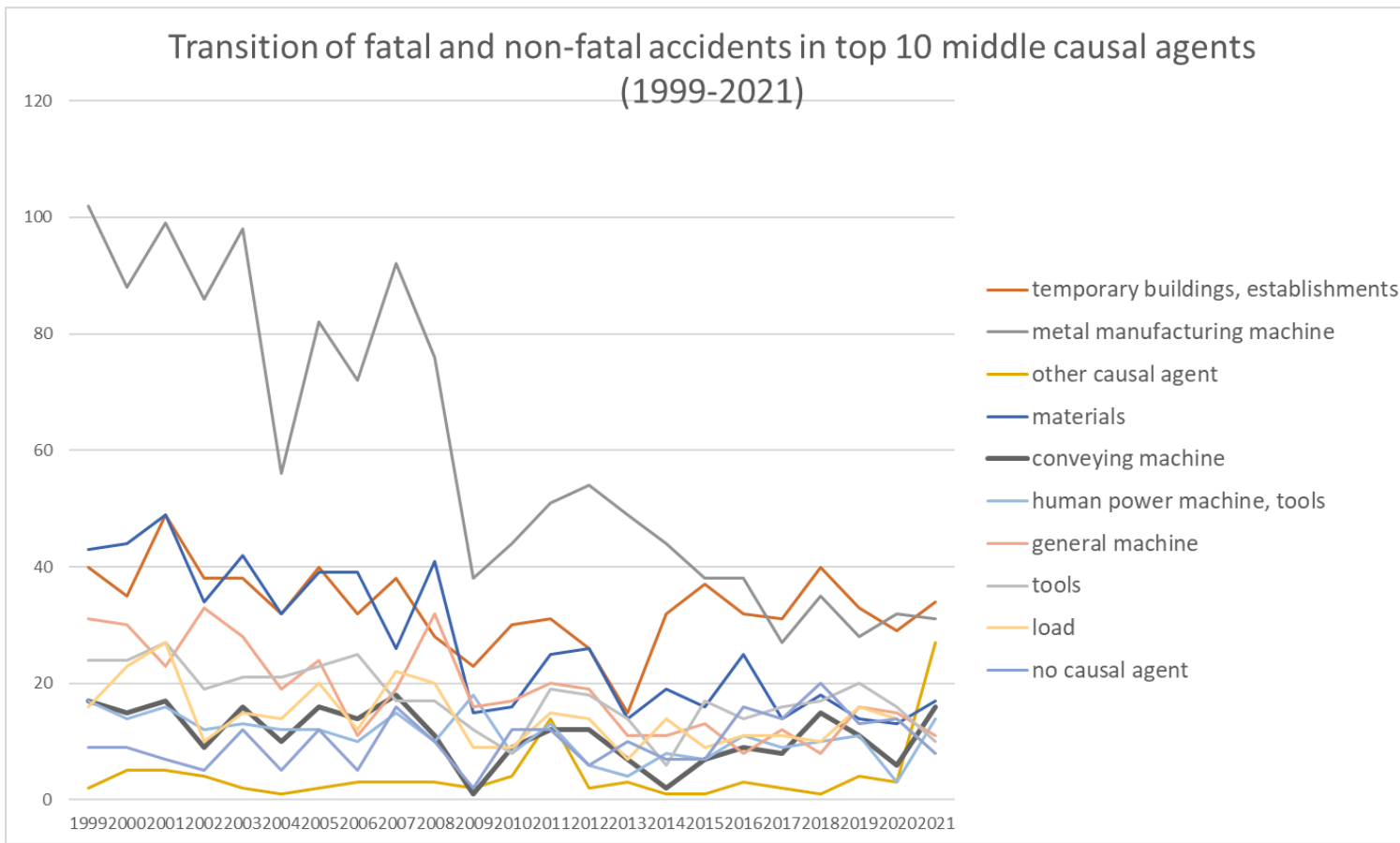


Transition of fatal and non-fatal accidents in each element like as causal agents, type of accidents, etc. in code no. 011305 other precision machine products (1999-2021)

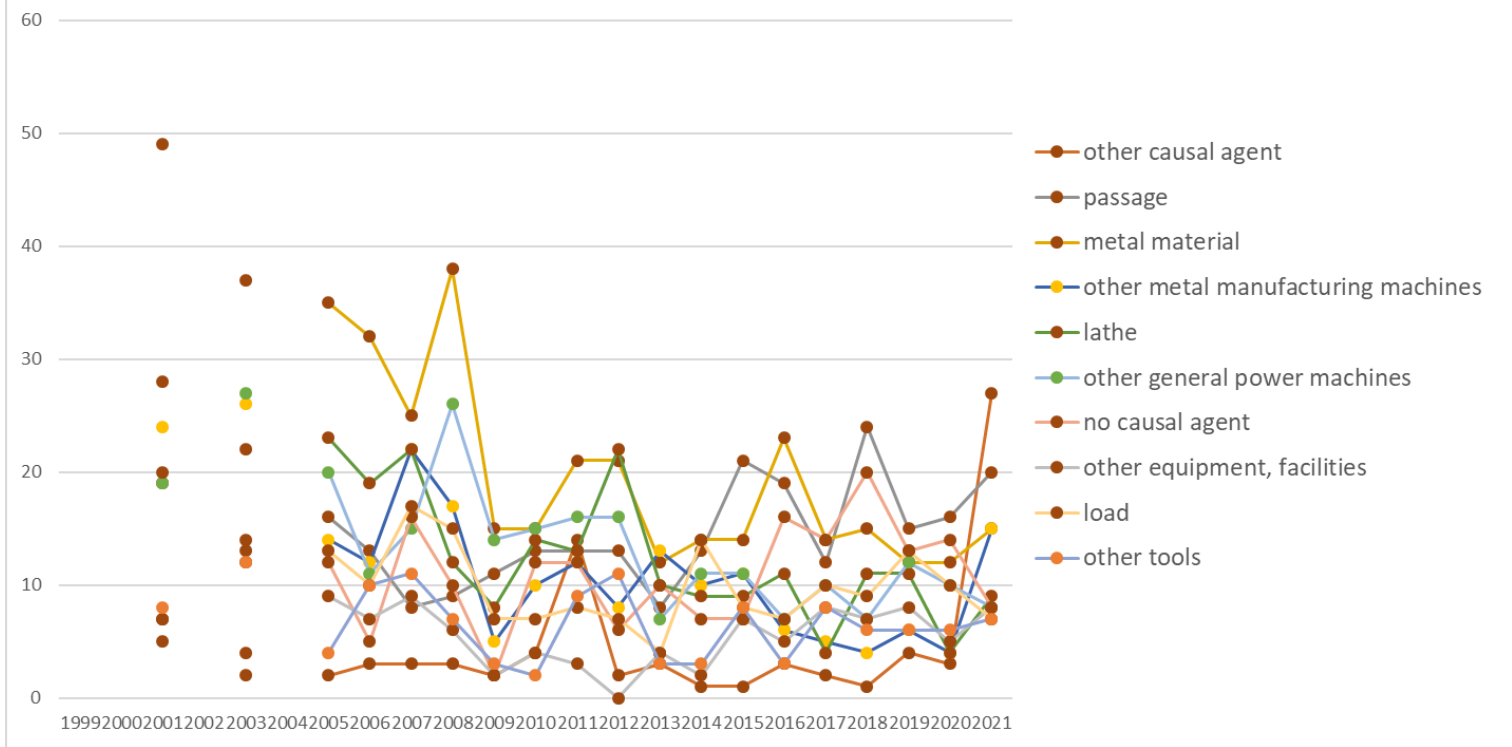


Transition of fatal and non-fatal accidents in large causal agents in code no. 011305 other precision machine products (1999-2021)



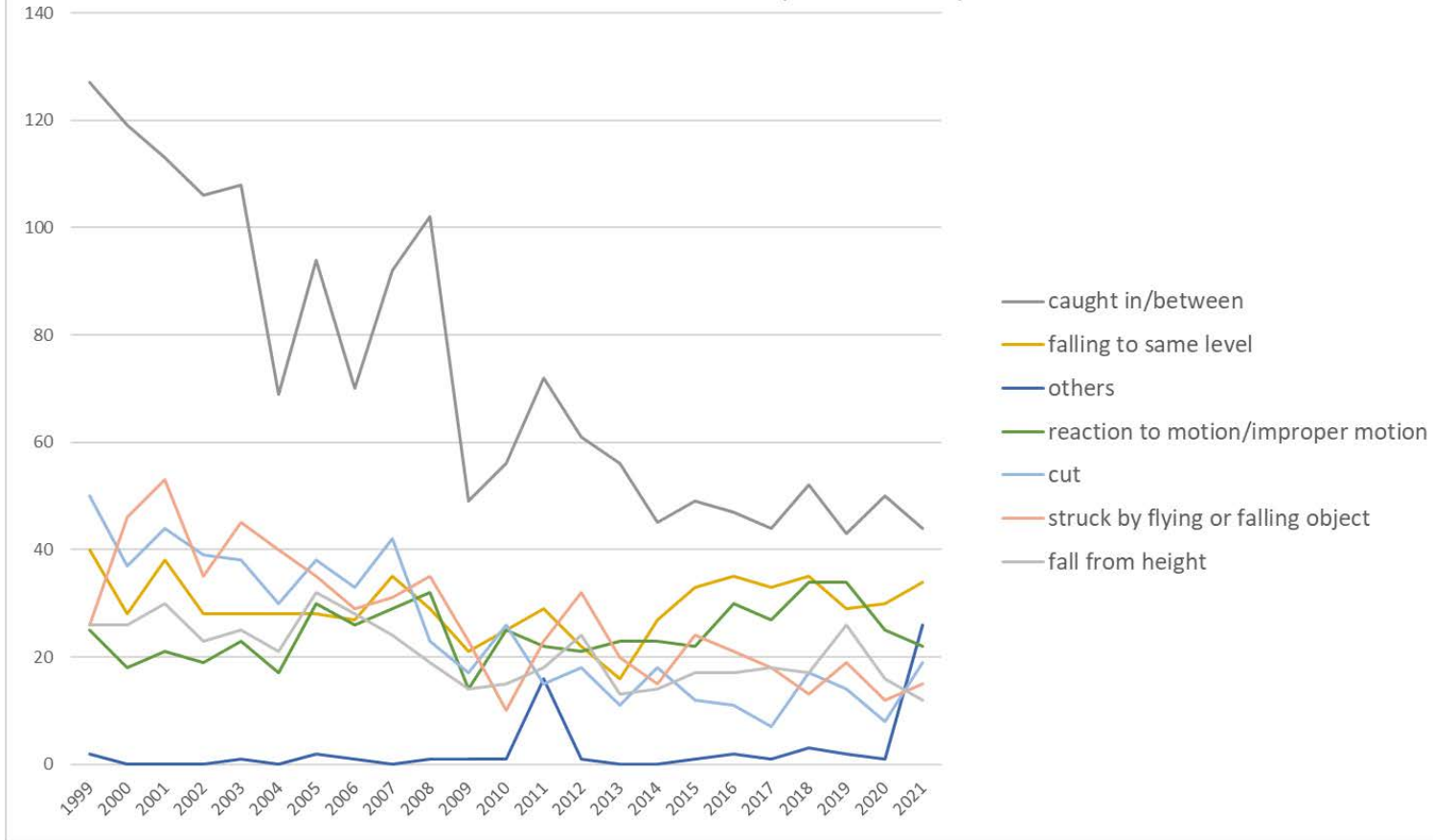
Transition of fatal and non-fatal accidents in middle causal agents in code no. 011305 other precision machine products (1999-2021)

## Transition of fatal and non-fatal accidents in top 10 small causal agents (1999-2021)



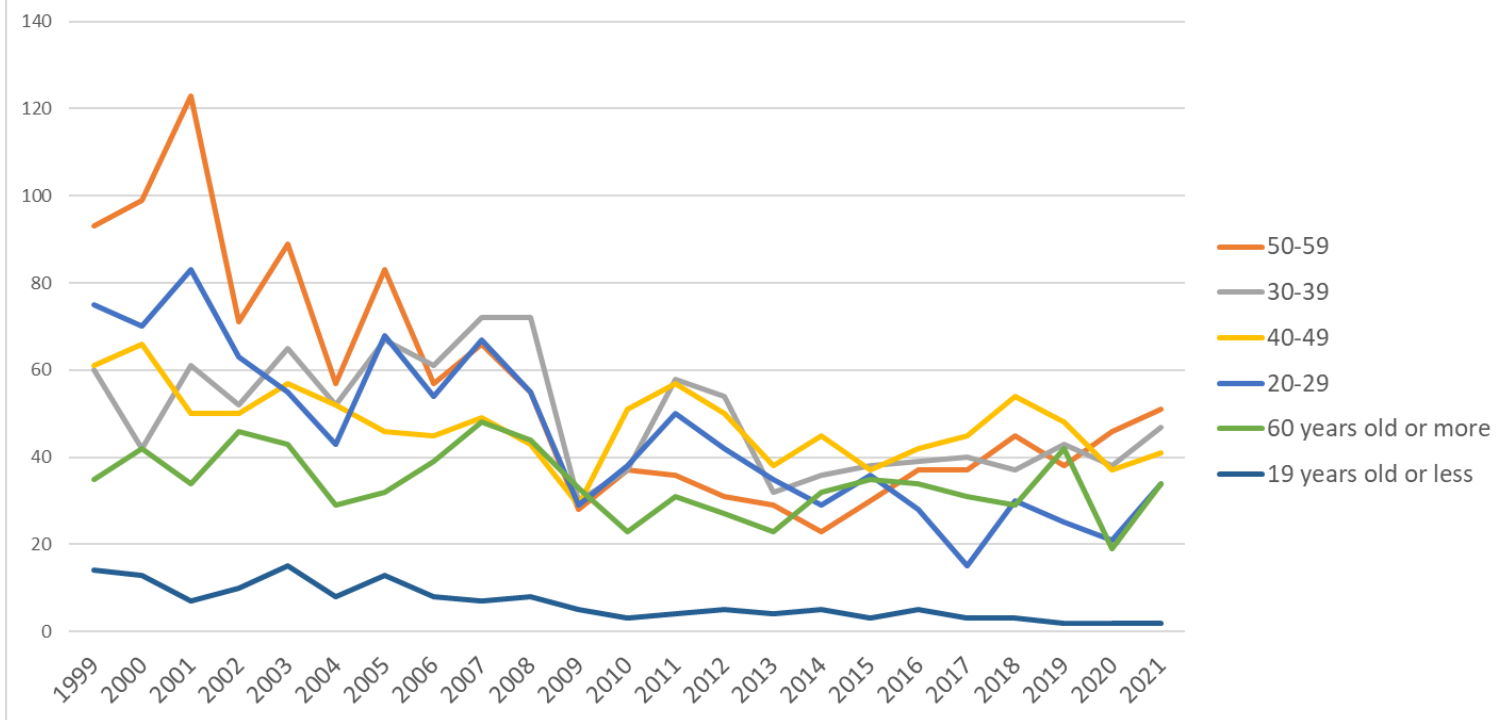
Transition of fatal and non-fatal accidents in small causal agents in code no. 011305 other precision machine products (1999-2021)

Transition of fatal and non-fatal accidents in top 7 type of accidents  
(1999-2021)



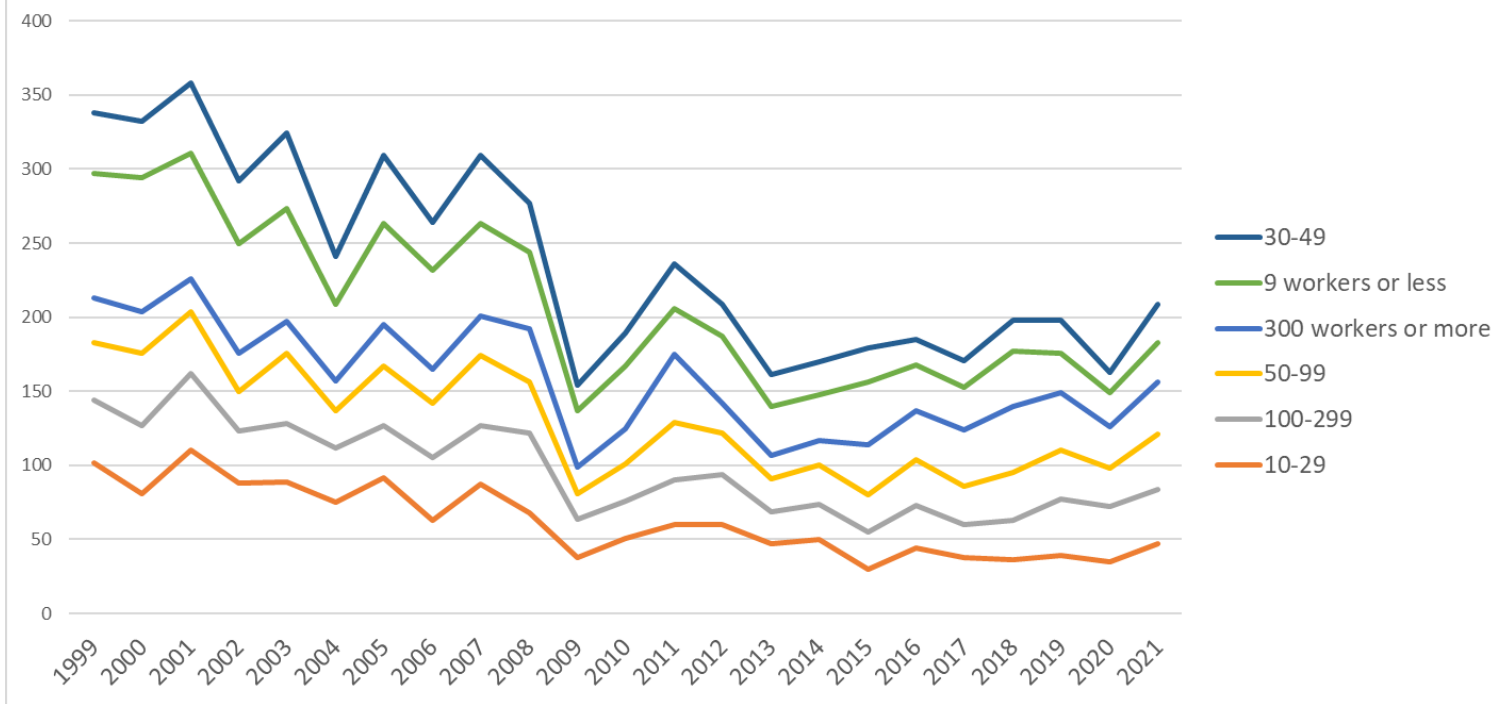
Transition of fatal and non-fatal accidents in type of accidents in code no. 011305 other precision machine products (1999-2021)

### Transition of fatal and non-fatal accidents in workers ages (1999-2021)



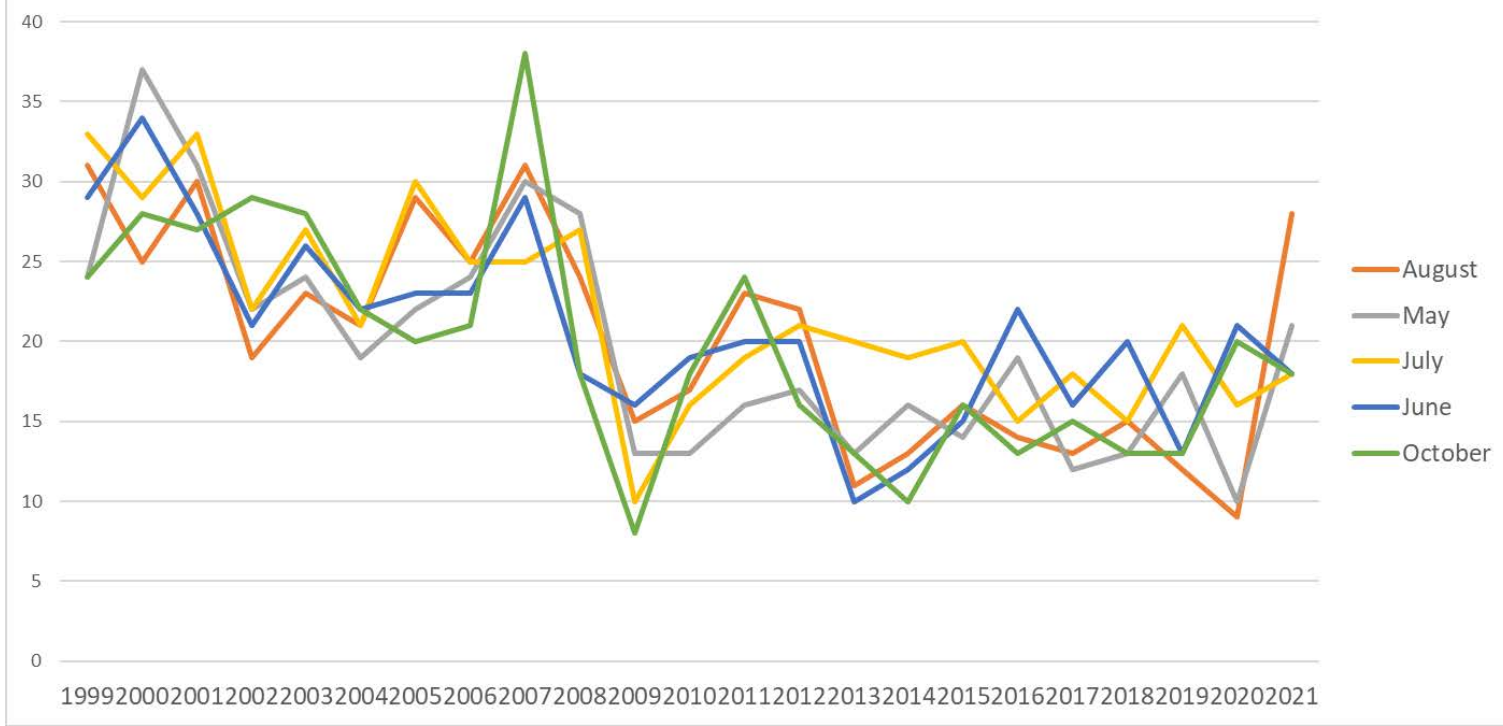
Transition of fatal and non-fatal accidents in workers ages in code no. 011305 other precision machine products (1999-2021)

Transition of fatal and non-fatal accidents in workers scales (1999-2021)



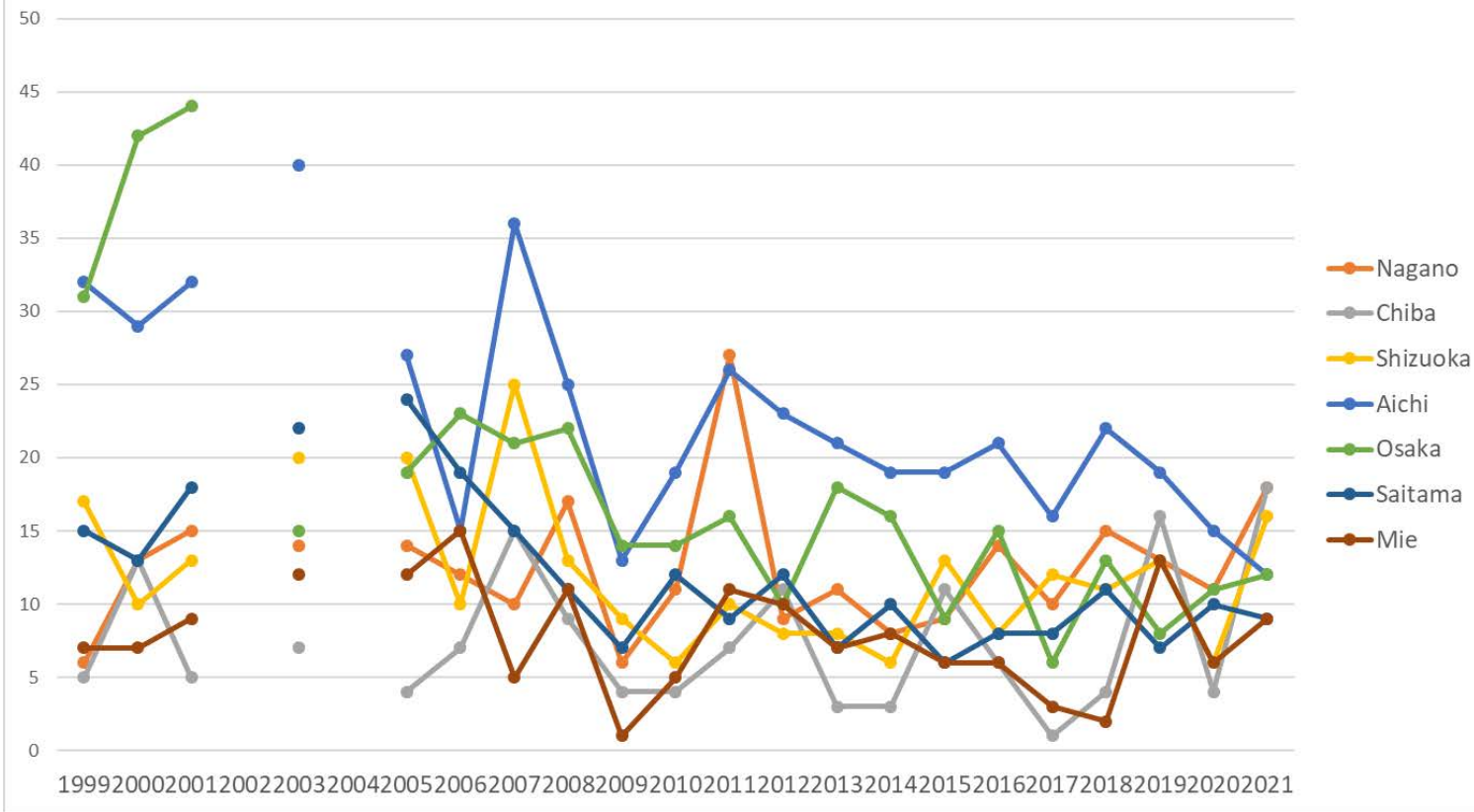
Transition of fatal and non-fatal accidents in workers scales in code no. 011305 other precision machine products (1999-2021)

Transition of fatal and non-fatal accidents in top 5 months (1999-2021)



Transition of fatal and non-fatal accidents in months in code no. 011305 other precision machine products (1999-2021)

Transition of fatal and non-fatal accidents in top 7 prefectures (1999-2021)



Transition of fatal and non-fatal accidents in prefectures in code no. 011305 other precision machine products (1999-2021)

Transition of fatal and non-fatal accidents in large causal agents in code no. 011305 other precision machine products (1999-2021)

code	Causal (L) agents	1999	2000	2001	2002	2003	2004	2005	2006	2007	2008	2009	2010	2011	2012	2013	2014	2015	2016	2017	2018	2019	2020	2021	total	Causal (L) agents
1	machine	136	128	122	126	131	79	111	89	116	110	57	65	74	79	62	58	52	48	41	46	53	52	44	1,879	machine
9	others	12	16	14	9	15	6	15	10	20	13	6	16	27	8	13	9	8	19	16	21	17	18	35	343	others
3	other equipment	49	49	56	46	46	45	49	45	45	37	34	23	38	26	24	17	35	31	36	38	41	26	34	870	other equipment
																										temporary



4	temporary buildings, establishments	40	35	49	38	38	32	40	32	38	28	23	30	31	26	15	32	37	32	31	40	33	29	34	763	buildings, establishments
2	crane, conveying machine	38	30	35	24	31	26	30	32	37	24	9	24	23	25	19	15	16	12	20	22	18	9	30	549	crane, conveying machine
5	substance, material	46	48	54	38	48	35	43	43	29	43	16	19	26	27	18	22	18	26	14	19	16	15	22	685	substance, material
6	load	16	23	27	10	15	14	20	12	22	20	9	9	15	14	7	14	9	11	11	10	16	14	8	326	load
7	environment	1	3	1	1		4	1	1	2	2		3	2	4	3	3	4	6	2	2	4		2	51	environment
	total	338	332	358	292	324	241	309	264	309	277	154	189	236	209	161	170	179	185	171	198	198	163	209	5,466	total

Transition of fatal and non-fatal accidents in middle causal agents in code no. 011305 other precision machine products (1999-2021)

code	Causal (M) agents	1999	2000	2001	2002	2003	2004	2005	2006	2007	2008	2009	2010	2011	2012	2013	2014	2015	2016	2017	2018	2019	2020	2021	total	Causal (M) agents
41	temporary buildings, establishments	40	35	49	38	38	32	40	32	38	28	23	30	31	26	15	32	37	32	31	40	33	29	34	763	temporary buildings, establishments
15	metal manufacturing machine	102	88	99	86	98	56	82	72	92	76	38	44	51	54	49	44	38	38	27	35	28	32	31	1,360	metal manufacturing machine
91	other causal agent	2	5	5	4	2	1	2	3	3	3	2	4	14	2	3	1	1	3	2	1	4	3	27	97	other causal agent
52	materials	43	44	49	34	42	32	39	39	26	41	15	16	25	26	14	19	16	25	14	18	14	13	17	621	materials
22	conveying machine	17	15	17	9	16	10	16	14	18	11	1	9	12	12	7	2	7	9	8	15	11	6	16	258	conveying machine

36	human power machine, tools	17	14	16	12	13	12	12	10	15	10	18	8	13	6	4	8	7	11	9	10	11	3	14	253	human power machine, tools
16	general machine	31	30	23	33	28	19	24	11	19	32	16	17	20	19	11	11	13	8	12	8	16	15	11	427	general machine
37	tools	24	24	27	19	21	21	23	25	17	17	12	8	19	18	14	6	17	14	16	17	20	16	10	405	tools
61	load	16	23	27	10	15	14	20	12	22	20	9	9	15	14	7	14	9	11	11	10	16	14	8	326	load
92	no causal agent	9	9	7	5	12	5	12	5	16	10	2	12	12	6	10	7	7	16	14	20	13	14	8	231	no causal agent
21	crane	12	11	9	12	11	10	9	8	12	8	6	7	5	7	10	6	7	2	4	3	3	2	8	172	crane
39	other equipments, facilities	3	6	7	8	4	8	9	7	9	6	2	4	3		4	2	7	5	8	7	8	5	8	130	other equipments, facilities
23	vehicle	9	4	9	3	4	6	5	10	7	5	2	8	6	6	2	7	2	1	8	4	4	1	6	119	vehicle
51	hazards, harmful substances	3	4	5	4	6	3	4	4	3	2	1	3	1	1	4	3	2	1		1	2	2	5	64	hazards, harmful substances
71	natural environment	1	3	1	1		4	1	1	2	2		3	2	4	3	3	4	6	2	2	4		2	51	natural environment
12	power transmission mechanism	1	6		4	2	2	2	3	1	1	1	2	2	3	1	3	1	1	1	3	3	3	1	47	power transmission mechanism
13	woodworking machine	1	3		3	3	1	3	3	3	1	2	1	1	2				1	1		5	2	1	37	woodworking machine
33	welding equipment	4	1	3	4	2		3	1	3	2	1	1			2	1	1					1	1	31	welding equipment

35	electric equipment		2	2	1	2	1		1						2			1	1	2	1			1	17	electric equipment
31	pressure vessel	1		1	1	3	1	2	1	1		1	1							1	2	2			18	pressure vessel
99	unclassifiable	1	2	2		1		1	2	1		2		1			1						1		15	unclassifiable
34	kiln, caldron		2		1	1	2				2		1	1				2			1		1		14	kiln, caldron
14	construction machine						1			1			1		1	1							1		6	construction machine
11	engine	1	1																						2	engine
32	chemical facilities													2											2	chemical facilities
17	mobile silviculture machine																									mobile silviculture machine
	total	338	332	358	292	324	241	309	264	309	277	154	189	236	209	161	170	179	185	171	198	198	163	209	5,466	total

Transition of fatal and non-fatal accidents in small causal agents in code no. 011305 other precision machine products (1999-2021)

code	Causal (S) agents	1999	2000	2001	2002	2003	2004	2005	2006	2007	2008	2009	2010	2011	2012	2013	2014	2015	2016	2017	2018	2019	2020	2021	total	Causal (S) agents
911	other causal agent			5		2		2	3	3	3	2	4	14	2	3	1	1	3	2	1	4	3	27	85	other causal agent
417	passage			19		14		16	13	8	9	11	13	13	13	8	13	21	19	12	24	15	16	20	277	passage
521	metal material			49		37		35	32	25	38	15	15	21	21	12	14	14	23	14	15	12	12	15	419	metal material
159	other metal manufacturing machines			24		26		14	12	22	17	5	10	12	8	13	10	11	6	5	4	6	4	15	224	other metal manufacturing machines
151	lathe			28		22		23	19	22	12	8	14	13	22	10	9	9	11	4	11	11	4	9	261	lathe
	other general																									other general

169	power machines			19		27		20	11	15	26	14	15	16	16	7	11	11	7	10	7	12	10	8	262	power machines
921	no causal agent			7		12		12	5	16	10	2	12	12	6	10	7	7	16	14	20	13	14	8	203	no causal agent
391	other equipment, facilities			7		4		9	7	9	6	2	4	3		4	2	7	5	8	7	8	5	8	105	other equipment, facilities
611	load			20		13		13	10	17	15	7	7	8	7	4	14	8	7	10	9	13	10	7	199	load
379	other tools			8		12		4	10	11	7	3	2	9	11	3	3	8	3	8	6	6	6	7	127	other tools
211	crane			8		10		6	7	10	7	6	5	4	4	6	3	7	2	4	3	3	2	7	104	crane
224	conveyor			3		5		3	5	4	4	1		1	2	3	1	1	2		2	1		7	45	conveyor
364	hand tool			11		6		8	4	8	4	8	3	6	2	2	5	1	6	5	5	6	2	6	98	hand tool
231	cars, bus, motorcycle			9		4		5	10	7	4	2	7	6	6	2	7	2	1	8	4	4	1	6	95	cars, bus, motorcycle
362	human power hauling equipment			3		4		4	4	6	6	9	2	6	4	2	3	6	4	4	4	4	1	6	82	human power hauling equipment
222	forklift			5		4		5	3	8	2		8	7	2	1		2	2	3	5	7	1	5	70	forklift
153	grinding machine, buffing machine			16		15		15	13	19	12	10	6	6	13	9	7	7	5	3	3	3	7	4	173	grinding machine, buffing machine
413	stairs, landing stage			13		10		6	9	12	10	5	5	3	7	2	6	5	5	5	5	8	5	4	125	stairs, landing stage
519	other hazards, harmful substances			1		1		2	2		1		1			3							1	4	17	other hazards, harmful substances
371	ladder			7		8		14	12	4	6	3	2	7	5	8	2	5	9	7	9	13	8	3	132	ladder
221	truck			9		7		8	4	5	4			3	5	2	1	4	5	3	7	3	5	3	78	truck
419	other temporary buildings, establishments			3		1		3	2	4	4	1	2	5	3	2	1	2	1	3	2	5	3	3	50	other temporary buildings, establishments

152	drill press, milling machine			20	20		18	13	16	24	8	9	9	5	10	10	4	6	11	10	6	9	2	210	drill press, milling machine
416	working platform, boot board			6	9		12	2	4	3	2	5	3	1		5	4	3	8	6	2	2	2	79	working platform, boot board
418	building, establishment			2	2		3	2	7	2	3	3	5		3	3	3	3	3	3	2	2	2	53	building, establishment
529	other materials				3		4	4	1	1		1	2	5	2	4	2	1		3	2	1	2	38	other materials
415	roof, beam, haze, crossbeam, principal rafter			3					2			1				2	1						2	11	roof, beam, haze, crossbeam, principal rafter
361	human power cranes				2			2			1	1									1		2	9	human power cranes
154	power press			7	14		11	13	11	9	6	4	11	6	6	7	6	10	4	7	2	8	1	143	power press
612	machine/equipment as load			7	2		7	2	5	5	2	2	7	7	3		1	4	1	1	3	4	1	64	machine/equipment as load
121	power transmission mechanism				2		2	3	1	1	1	2	2	3	1	3	1	1	1	3	3	3	1	34	power transmission mechanism
514	harmful substance			1	1		1	1	2	1	1	1	1		1	2	2				1	1	1	18	harmful substance
131	circular sawing machine				3		1	2	2			1	1	1				1	1			2	1	16	circular sawing machine
163	roll machine (except printingroll machine)			1			2			2	1		1		1		1		2		1	2	1	15	roll machine (except printingroll machine)
229	other powered conveying machines							2	1			1	1	3	1				2				1	12	other powered conveying machines

339	other welding equipment			2		1		3		1		1											1	11	other welding equipment			
414	opening			1				3			1					1	1	1					1	9	opening			
715	high/cold temperature environment			1							1		1	1									3	1		1	9	high/cold temperature environment
162	mixer, grinder							1		1		1		1									1		1	8	mixer, grinder	
214	elevator, lift							1		1		1		1	1	1									1	8	elevator, lift	
167	industrial robot									1	1			1									1	2	1	7	industrial robot	
351	transmission													1			1	1							1	4	transmission	
713	water																								1	1	water	
372	slinging tool			12		1		5	3	2	4	6	4	3	2	3	1	4	2	1	2	1	2			58	slinging tool	
719	other environments									1	1	1		1	3	2	2	4	3	1	2	4				25	other environments	
156	shearing machine			4		1		1	2	2	2	1	1			1	1	1								17	shearing machine	
411	scaffolding			2		2				1	1			1	2	2							1	1		14	scaffolding	
164	injection molding machine			2		1		1		1	1		2	1		1		1						1	1		13	injection molding machine
999	unclassifiable			2		1		1	2	1		2		1										1		12	unclassifiable	
219	other powered crane																									10	other powered crane	
363	human power machine			2		1							2	1												9	human power machine	
512	flammable substance			3						1	1	1			1		1									9	flammable substance	
522	lumber, bamboo									1																8	lumber, bamboo	

332	arc welding equipment			1		1				1	2							1					1	7	arc welding equipment	
359	other electrical equipment			1		2			1					1					1	1					7	other electrical equipment
312	pressure vessel			1		1		1	1				1							1					6	pressure vessel
319	other pressure vessels					1							1						1	1	2				6	other pressure vessels
134	hollow chisel mortiser, wood borer							1	1				1									1			5	hollow chisel mortiser, wood borer
212	mobile crane			1						1				1	1	1									5	mobile crane
166	printing machine			1						1	1										1				4	printing machine
331	gas welding equipment								1	1				1											4	gas welding equipment
341	kiln, caldron									1			1					1					1		4	kiln, caldron
342	industrial dryer									1				1							1				4	industrial dryer
513	inflammable gas					2									1						1				4	inflammable gas
711	natural ground, rock							1					2												4	natural ground, rock
132	band sawing machine									1	1	1													3	band sawing machine
139	other woodworking machines																						3		3	other woodworking machines
142	excavating machine									1				1											3	excavating machine

161	centrifugal machine											1	1											3	centrifugal machine	
311	boiler					1		1		1															3	boiler
523	stone, sand, substance					1								2											3	stone, sand, substance
712	standing tree									1				1		1									3	standing tree
165	food manufacturing machine												1												2	food manufacturing machine
321	chemical facilities														2										2	chemical facilities
352	electric power facilities																				1				2	electric power facilities
511	explosive substance																								2	explosive substance
133	wood planer machine																								1	wood planer machine
136	chain saw																								1	chain saw
141	leveling, transporting or loading machine																								1	leveling, transporting or loading machine
145	demolition machine																								1	demolition machine
223	railway equipment												1												1	railway equipment
225	loader																								1	loader
232	railway vehicle																								1	railway vehicle
239	other vehicles																								1	other vehicles
349	other kiln, caldron																								1	other kiln, caldron
111	engine																									engine



135	chamfering machine, router, woodworking milling machine																						chamfering machine, router, woodworking milling machine
143	foundation work machine																						foundation work machine
144	hardening machine																						hardening machine
146	vehicle for high lift work																						vehicle for high lift work
149	other construction machines																						other construction machines
155	forging pressure hammer																						forging pressure hammer
171	felling machine																						felling machine
172	mobile logging machine																						mobile logging machine
173	skyline yarding machine																						skyline yarding machine
179	other mobile silviculture machine																						other mobile silviculture machine
213	derrick crane																						derrick crane
215	cargo lifting appliance																						cargo lifting appliance
216	gondola																						gondola
	lumberyard																						lumberyard

217	equipment, logging cableway																											equipment, logging cableway
218	simple skyline yarding equipment																											simple skyline yarding equipment
226	straddle carrier																											straddle carrier
227	rough terrain hauler																											rough terrain hauler
412	timbering																											timbering
515	radiation																											radiation
714	abnormal environment																											abnormal environment
	total			358		324		309	264	309	277	154	189	236	209	161	170	179	185	171	198	198	163	209	4,263	total		

Transition of fatal and non-fatal accidents in type of accidents in code no. 011305 other precision machine products (1999-2021)

code	Type of accidents	1999	2000	2001	2002	2003	2004	2005	2006	2007	2008	2009	2010	2011	2012	2013	2014	2015	2016	2017	2018	2019	2020	2021	total	Type of accidents
07	caught in/between	127	119	113	106	108	69	94	70	92	102	49	56	72	61	56	45	49	47	44	52	43	50	44	1,668	caught in/between
02	falling to same level	40	28	38	28	28	28	28	27	35	29	21	25	29	22	16	27	33	35	33	35	29	30	34	678	falling to same level
90	others	2				1		2	1		1	1	1	16	1			1	2	1	3	2	1	26	62	others
19	reaction to motion/improper motion	25	18	21	19	23	17	30	26	29	32	14	25	22	21	23	23	22	30	27	34	34	25	22	562	reaction to motion/improper motion
08	cut	50	37	44	39	38	30	38	33	42	23	17	26	15	18	11	18	12	11	7	17	14	8	19	567	cut
04	struck by flying or falling object	26	46	53	35	45	40	35	29	31	35	23	10	23	32	20	15	24	21	18	13	19	12	15	620	struck by flying or falling object

01	fall from height	26	26	30	23	25	21	32	28	24	19	14	15	18	24	13	14	17	17	18	17	26	16	12	475	fall from height	
03	crash	11	16	16	8	13	7	16	7	17	8	4	6	14	7	2	5	7	5	5	10	8	7	11	210	crash	
06	crashed by	9	16	18	15	20	10	13	17	19	10	6	10	14	11	6	10	8	5	8	6	15	7	9	262	crashed by	
17	traffic accident (public road)	6	4	9	3	7	3	2	12	6	8	2	5	6	4	2	5	2		4	4	1	1	7	103	traffic accident (public road)	
05	collapse	7	10	4	10	6	7	10	7	4	6	2	4	2	7	6	2	1	7	1	3	4	3	3	116	collapse	
11	contact to high/low-temperature	4	4	3	4	3	5	5	5	3	1		5	2		2	3	2	4	2	2	2	1	3	65	contact to high/low-temperature	
12	contact to harmful substance	3	5	3	2	3	1	3	1	2	3	1	1	1		2	2	1					1	3	38	contact to harmful substance	
13	electric shock			3		1	1			1										1	1			1	9	electric shock	
16	fire	2		2		1		1								1			1						8	fire	
99	unclassifiable		2	1		1				1				2									1		8	unclassifiable	
14	explosion		1							1					1	1					1				5	explosion	
09	injury to the sole of the foot						1			2										1					4	injury to the sole of the foot	
15	burst					2		1																	3	burst	
18	traffic accident (others)																1			1		1			3	traffic accident (others)	
10	drown																										drown
	total	338	332	358	292	324	241	309	264	309	277	154	189	236	209	161	170	179	185	171	198	198	163	209	5,466	total	

Transition of fatal and non-fatal accidents in workers ages in code no. 011305 other precision machine products (1999-2021)

code	Age	1999	2000	2001	2002	2003	2004	2005	2006	2007	2008	2009	2010	2011	2012	2013	2014	2015	2016	2017	2018	2019	2020	2021	total	Age
5	50-59	93	99	123	71	89	57	83	57	66	55	28	37	36	31	29	23	30	37	37	45	38	46	51	1,261	50-59
3	30-39	60	42	61	52	65	52	67	61	72	72	30	37	58	54	32	36	38	39	40	37	43	38	47	1,133	30-39
4	40-49	61	66	50	50	57	52	46	45	49	43	29	51	57	50	38	45	37	42	45	54	48	37	41	1,093	40-49
2	20-29	75	70	83	63	55	43	68	54	67	55	29	38	50	42	35	29	36	28	15	30	25	21	34	1,045	20-29
6	60 years old or more	35	42	34	46	43	29	32	39	48	44	33	23	31	27	23	32	35	34	31	29	42	19	34	785	60 years old or more
1	19 years old or less	14	13	7	10	15	8	13	8	7	8	5	3	4	5	4	5	3	5	3	3	2	2	2	149	19 years old or less
	total	338	332	358	292	324	241	309	264	309	277	154	189	236	209	161	170	179	185	171	198	198	163	209	5,466	total

Transition of fatal and non-fatal accidents in workers scales in code no. 011305 other precision machine products (1999-2021)

code	Workers scale	1999	2000	2001	2002	2003	2004	2005	2006	2007	2008	2009	2010	2011	2012	2013	2014	2015	2016	2017	2018	2019	2020	2021	total	Workers scale
2	10-29	102	81	110	88	89	75	92	63	87	68	38	51	60	60	47	50	30	44	38	36	39	35	47	1,430	10-29
5	100-299	42	46	52	35	39	37	35	42	40	54	26	25	30	34	22	24	25	29	22	27	38	37	37	798	100-299
4	50-99	39	49	42	27	48	25	40	37	47	34	17	25	39	28	22	26	25	31	26	32	33	26	37	755	50-99
6	300 workers or more	30	28	22	26	21	20	28	23	27	36	18	24	46	20	16	17	34	33	38	45	39	28	35	654	300 workers or more
1	9 workers or less	84	90	85	74	76	52	68	67	62	52	38	42	31	45	33	31	42	31	29	37	27	23	27	1,146	9 workers or less
3	30-49	41	38	47	42	51	32	46	32	46	33	17	22	30	22	21	22	23	17	18	21	22	14	26	683	30-49
	total	338	332	358	292	324	241	309	264	309	277	154	189	236	209	161	170	179	185	171	198	198	163	209	5,466	total

Transition of fatal and non-fatal accidents in months in code no. 011305 other precision machine products (1999-2021)

code	Month	1999	2000	2001	2002	2003	2004	2005	2006	2007	2008	2009	2010	2011	2012	2013	2014	2015	2016	2017	2018	2019	2020	2021	total	Month
8	August	31	25	30	19	23	21	29	25	31	24	15	17	23	22	11	13	16	14	13	15	12	9	28	466	August

5	May	24	37	31	22	24	19	22	24	30	28	13	13	16	17	13	16	14	19	12	13	18	10	21	456	May
7	July	33	29	33	22	27	21	30	25	25	27	10	16	19	21	20	19	20	15	18	15	21	16	18	500	July
6	June	29	34	28	21	26	22	23	23	29	18	16	19	20	20	10	12	15	22	16	20	13	21	18	475	June
10	October	24	28	27	29	28	22	20	21	38	18	8	18	24	16	13	10	16	13	15	13	13	20	18	452	October
9	September	20	30	29	24	37	16	30	25	23	11	9	19	27	16	14	16	14	11	9	19	16	13	18	446	September
3	March	23	27	29	29	32	33	21	19	27	26	16	15	23	17	17	22	15	18	15	19	29	11	17	500	March
1	January	34	25	44	26	31	20	33	22	20	28	19	12	20	19	17	10	10	14	14	19	17	17	16	487	January
4	April	24	24	34	22	25	22	29	23	18	31	18	14	15	21	10	10	9	15	16	18	8	13	15	434	April
2	February	26	23	24	32	19	13	25	18	26	30	15	15	10	18	13	19	17	14	9	16	19	12	14	427	February
11	November	34	25	23	19	27	16	23	18	18	22	7	17	23	14	12	14	13	13	19	17	21	14	13	422	November
12	December	36	25	26	27	25	16	24	21	24	14	8	14	16	8	11	9	20	17	15	14	11	7	13	401	December
	total	338	332	358	292	324	241	309	264	309	277	154	189	236	209	161	170	179	185	171	198	198	163	209	5,466	total

Transition of fatal and non-fatal accidents in prefectures in code no. 011305 other precision machine products (1999-2021)

code	Prefecture	1999	2000	2001	2002	2003	2004	2005	2006	2007	2008	2009	2010	2011	2012	2013	2014	2015	2016	2017	2018	2019	2020	2021	total	Prefecture	
20	Nagano	6	13	15		14		14	12	10	17	6	11	27	9	11	8	9	14	10	15	13	11	18	263	Nagano	
12	Chiba	5	13	5		7		4	7	15	9	4	4	7	11	3	3	11	6	1	4	16	4	18	157	Chiba	
22	Shizuoka	17	10	13		20		20	10	25	13	9	6	10	8	8	6	13	8	12	11	13	6	16	254	Shizuoka	
23	Aichi	32	29	32		40		27	15	36	25	13	19	26	23	21	19	19	21	16	22	19	15	12	481	Aichi	
27	Osaka	31	42	44		15		19	23	21	22	14	14	16	10	18	16	9	15	6	13	8	11	12	379	Osaka	
11	Saitama	15	13	18		22		24	19	15	11	7	12	9	12	7	10	6	8	8	11	7	10	9	253	Saitama	
24	Mie	7	7	9		12		12	15	5	11	1	5	11	10	7	8	6	6	3	2	13	6	9	165	Mie	
26	Kyoto	11	11	17		12		8	6	9	9	7	2	11	4	5	3	8	4	5	11	8	9	8	168	Kyoto	

9	Tochigi	8	11	12		10		16	9	12	5	2	7	6	8	6	7	6	5	9	5	6	6	8	164	Tochigi
14	Kanagawa	26	13	20		11		11	10	8	9	8	13	7	11	6	8	14	8	6	7	7	8	7	218	Kanagawa
19	Yamanashi	4	4	5		6		4	5	5	11	4	5	3	3	1		8	3	7	6	4	2	7	97	Yamanashi
13	Tokyo	17	21	23		16		9	6	14	15	4	12	5	11	12	8	7	3	6	9	7	4	6	215	Tokyo
28	Hyogo	9	14	13		10		9	6	11	3	7	7	8	7	5	7	11	13	13	10	5	6	6	180	Hyogo
8	Ibaraki	15	12	6		7		7	7	12	13	1	7	7	5	3	6	2	7	8	9	10	12	6	162	Ibaraki
25	Shiga	1	6	9		5		10	4	5	4	2	1	1		2	2	1	6	2	2	4	7	6	80	Shiga
5	Akita	2	6	3		4		5	2	7	3	2	4	1	2	2	3	1	1	3	4	4	3	5	67	Akita
44	Oita	2		4		3		3	11	5	4	4	2	1	2		1		1	2	1	4	2	5	57	Oita
21	Gifu	10	11	10		12		9	11	11	20	11	7	5	7	3	3	3	7	6	6	9	2	4	167	Gifu
10	Gunma	14	15	9		16		6	13	2	6	7	6	11	11	5	3	5	7	7	7	8	4	4	166	Gunma
34	Hiroshima	10	13	10		10		10	7	6	6	6	7	3	2	5	5	5	3	2	2	2	3	4	121	Hiroshima
15	Niigata	12	9	13		11		5	6	6	5	3	4	6	3	1	4	6		5	7	4	5	4	119	Niigata
40	Fukuoka	11	4	12		5		8	11	6	4	2	5	2	5	2	3	2	5	5	3	5	2	4	106	Fukuoka
3	Iwate	2	6	6		10		12		8	6	3	7	5	4	5	1	2	1	3	3	1	2	4	91	Iwate
33	Okayama	4	5	3		4		3	6	6	3		2	2	4		1	1	1	2	1	2	3	4	57	Okayama
46	Kagoshima	2		1				3		2						1	1	1	1				3	4	19	Kagoshima
7	Fukushima	4	4	2		4		4	1	4	2		3	4	2	2	2	2	4	1	1			3	49	Fukushima
16	Toyama	8	5	6		5		4	5	5	6	2	2	2	4	1	1	2	2	3	1	4	2	2	72	Toyama
6	Yamagata	8	4	6		1		3	3	8	1	2	2	2	2	3	3	2	3	3	2	3	1	2	64	Yamagata
4	Miyagi	7	6	3		1		2	4		5	3		1	6	3	3	5	1	1	1		2	2	56	Miyagi
39	Kochi	3	1	1		2		6	3	5	1	1	1	2	3		5		2	2	3	1	1	2	45	Kochi
43	Kumamoto	2	3	1		2		3	2	1	2	2		5	2	3	3	2	1		2	1	2	2	41	Kumamoto
37	Kagawa	5	5	8		5		5	5	3	1	3	4	5			3	4	5	1	3	1		1	67	Kagawa

17	Ishikawa	6	5	5		3		4	4	6	5	1	1	3	1	2	4		6	3		1		1	61	Ishikawa
1	Hokkaido	3	1	3		4		3		2	2	1	2	3	2		2	1	2		2	3	4	1	41	Hokkaido
32	Shimane	1		2		4		3	2	1	2		1	1	1	1			3		2	1		1	26	Shimane
30	Wakayama	2	1	1		3		4		1	3	1	1	1	2		1				1		1	1	24	Wakayama
47	Okinawa								1															1	2	Okinawa
35	Yamaguchi		1	1		3		1	6	2	3	3	1	2	2		3	1				2	2		33	Yamaguchi
45	Miyazaki	3	1	2		1		1	2	4	2	1	2	1	3	2		1		3	1	1			31	Miyazaki
2	Aomori	2	2	1		1						1		3	4			1		4	3				22	Aomori
18	Fukui	2		1		1		1		1		1		4	1	1	2	1	1	1			1		19	Fukui
38	Ehime			1					2	1	4	2		4		1	1	1			2				19	Ehime
42	Nagasaki	7	2					1	3	2	1	1					1						1		19	Nagasaki
41	Saga	1	2	1		1		1			2	2			1	1				1		1			14	Saga
29	Nara	1		1		1		4		1				1		1			1		2				13	Nara
36	Tokushima										1			2		1				1	1				6	Tokushima
31	Tottori		1					1							1										3	Tottori
	total	338	332	358		324		309	264	309	277	154	189	236	209	161	170	179	185	171	198	198	163	209	4,933	total

Data source : <https://anzeninfo.mhlw.go.jp/user/anzen/tok/anst00.htm>

Return to [https://www.jisha.or.jp/english/statistics/202211\\_23.html](https://www.jisha.or.jp/english/statistics/202211_23.html)