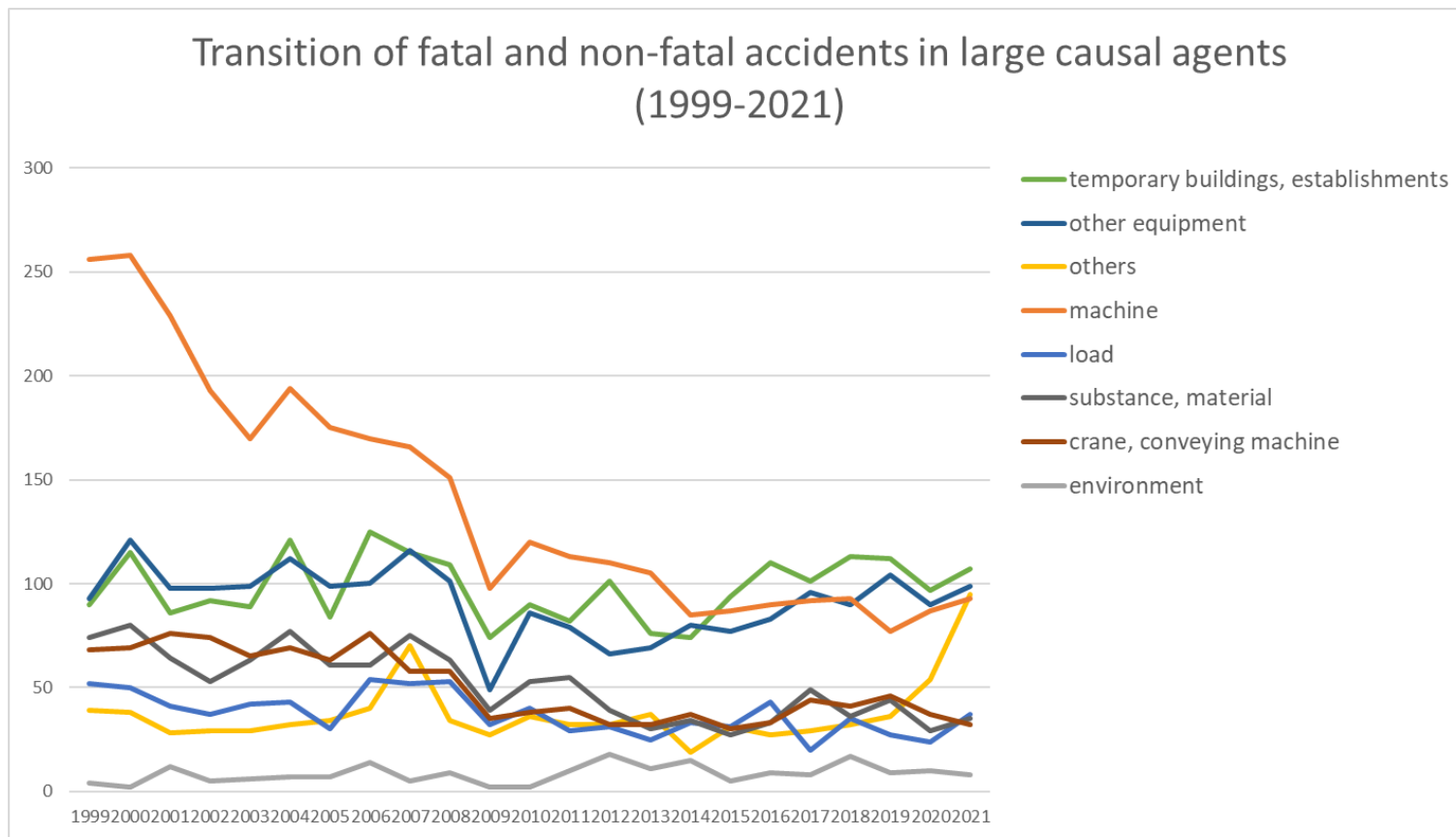
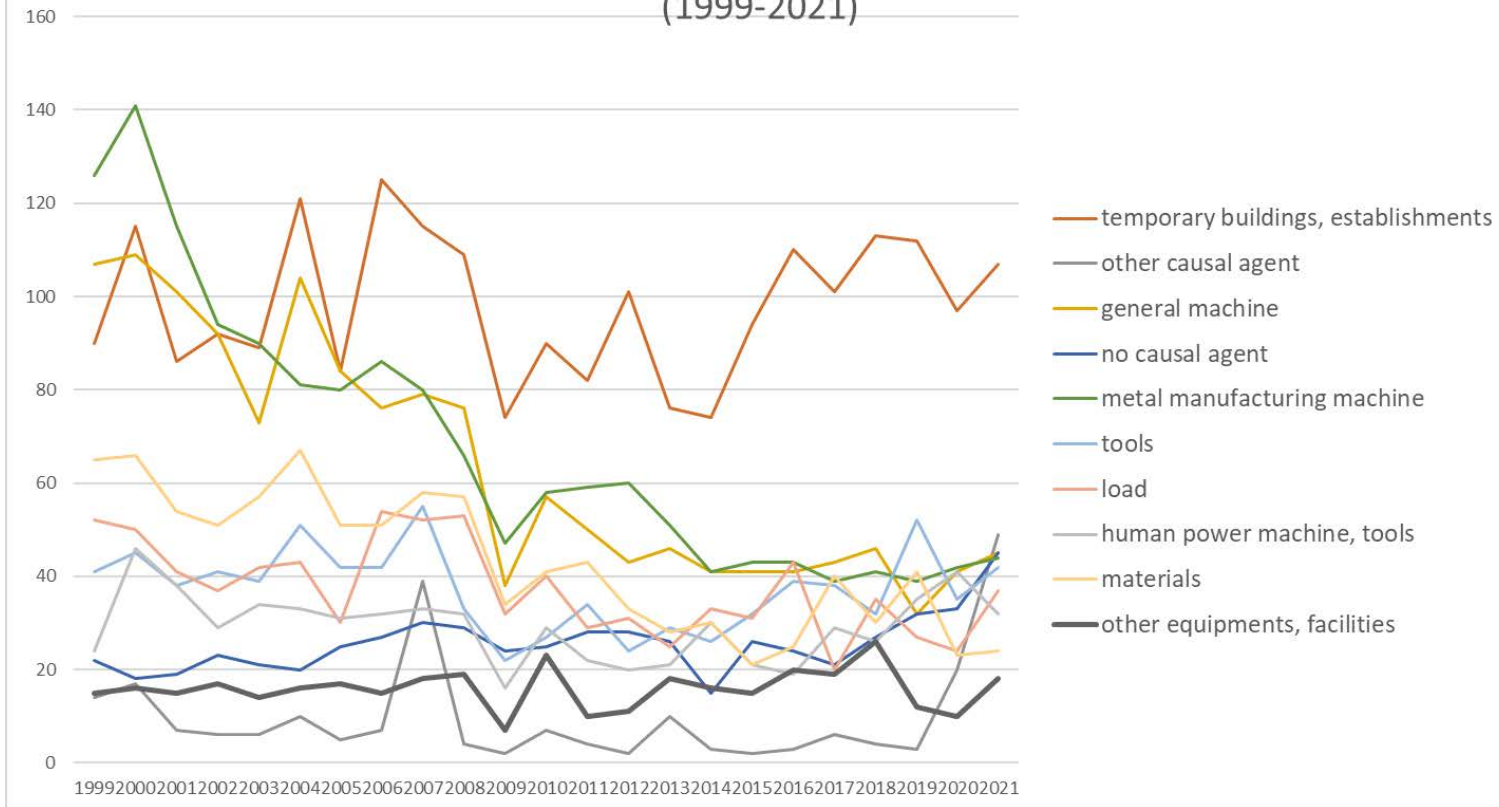


Transition of fatal and non-fatal accidents in each element like as causal agents, type of accidents, etc. in code no. 011409 other electrical equipment (1999-2021)



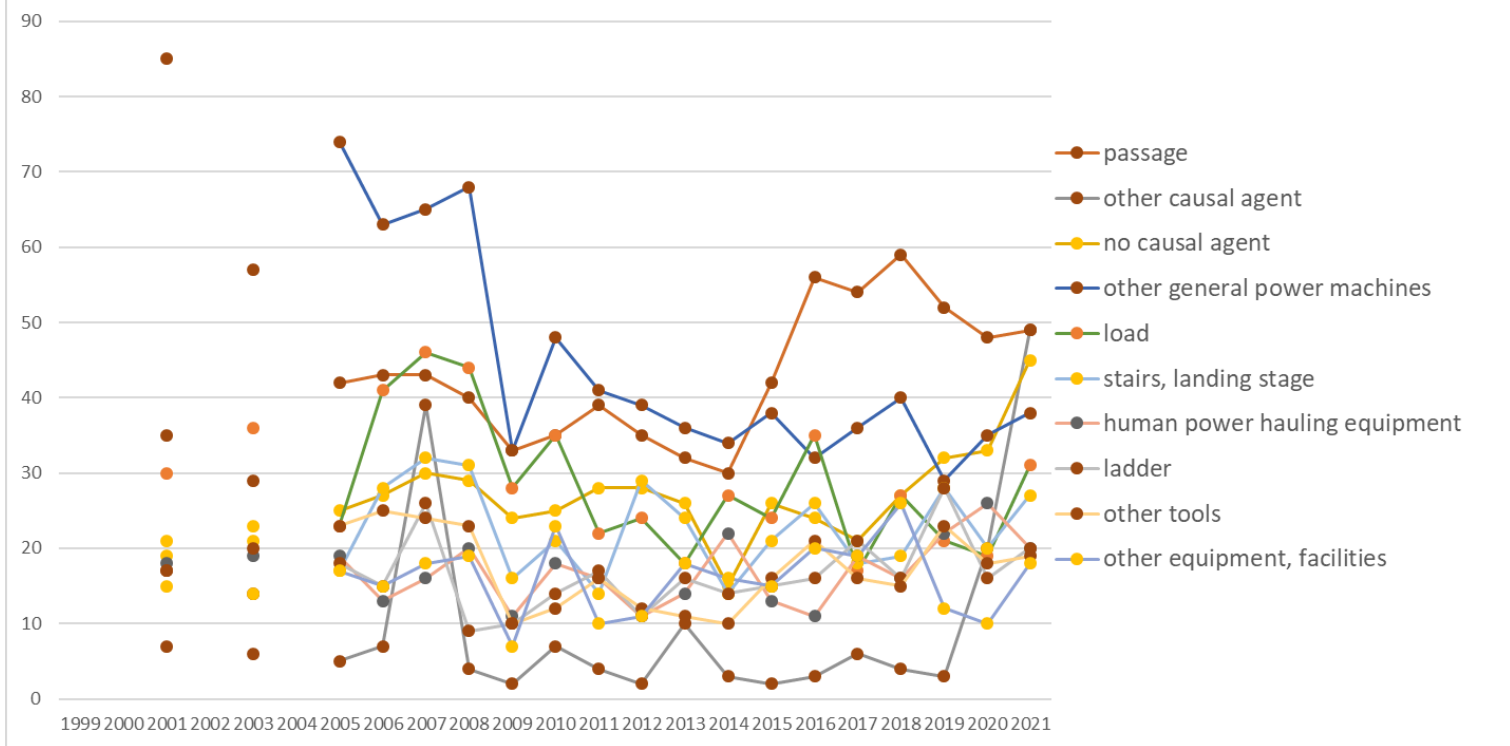
Transition of fatal and non-fatal accidents in large causal agents in code no. 011409 other electrical equipment (1999-2021)

Transition of fatal and non-fatal accidents in top 10 middle causal agents
(1999-2021)



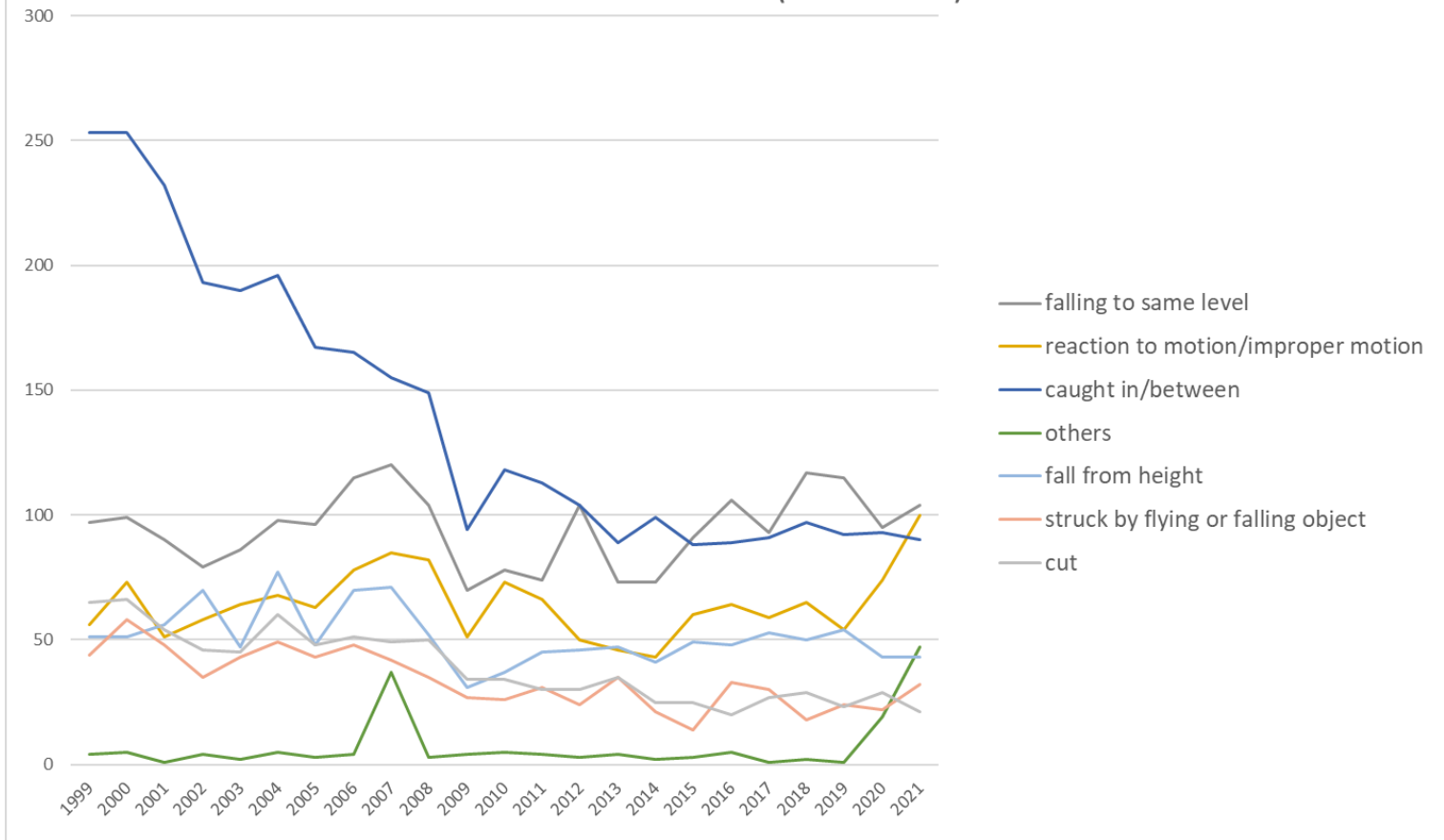
Transition of fatal and non-fatal accidents in middle causal agents in code no. 011409 other electrical equipment (1999-2021)

Transition of fatal and non-fatal accidents in top 10 small causal agents (1999-2021)



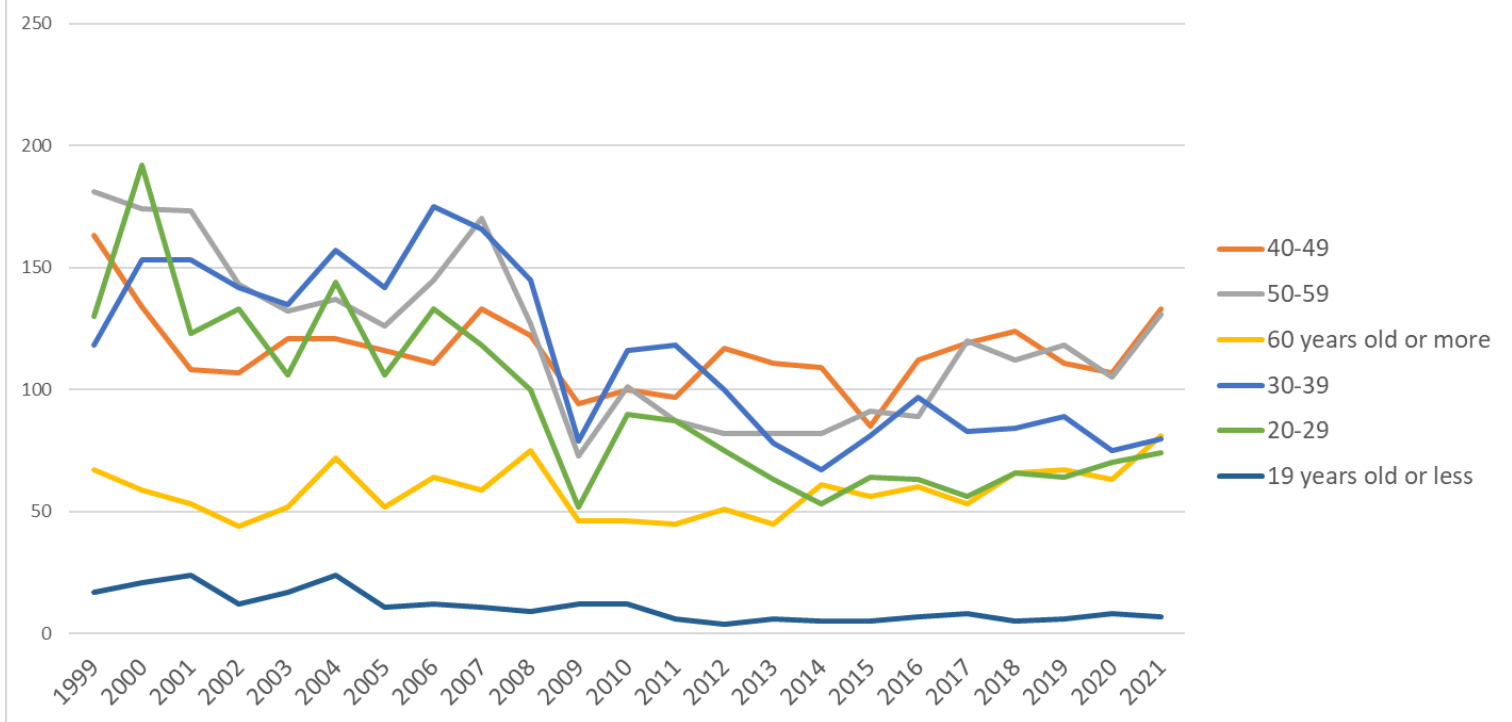
Transition of fatal and non-fatal accidents in small causal agents in code no. 011409 other electrical equipment (1999-2021)

Transition of fatal and non-fatal accidents in top 7 type of accidents
(1999-2021)



Transition of fatal and non-fatal accidents in type of accidents in code no. 011409 other electrical equipment (1999-2021)

Transition of fatal and non-fatal accidents in workers ages (1999-2021)



Transition of fatal and non-fatal accidents in workers ages in code no. 011409 other electrical equipment (1999-2021)

30	Wakayama	6	1			2		1	5	1	8	1	2			3			1	4	4	1	1	3	4	48	Wakayama
3	Iwate	5	8	7		3		9	9	7	6	5	5	5	2	1	3	6	2	5	3	4	6	3	104	Iwate	
42	Nagasaki	6	1	4		2		2	2	10	6	1	1	2		2		2	2	2	3	3	15	3	69	Nagasaki	
37	Kagawa	2	3	5		3		3	3	2	5	3	4	4	5	1	3	2	4	4	4	3		3	66	Kagawa	
5	Akita	6	6	5		2		4	7	4	2	1	4	4	3	1	1	2	2	1	2	5		3	65	Akita	
1	Hokkaido	4	7	6		5		9	4	6	5	1	3	7	6	6	8	4	2	1		1	1	2	88	Hokkaido	
44	Oita	4	5	9		5		3	7	9	1	1		1	4		1		2	3	4	5	5	2	71	Oita	
38	Ehime	7	8	6		2		2	2		5	3	5	3	4	3	1				1		2	2	56	Ehime	
32	Shimane	1	2	5		5		5	4	4	2	1	2	2		4	2		1				1	2	43	Shimane	
35	Yamaguchi	1	1	3		2		1	2	3	1	2	2	2	2	1	1	1	1	2	1		2	2	33	Yamaguchi	
17	Ishikawa	5	5	3		2		5	5	4	5	2	1	1	3	1		2	3	2	3	3		1	56	Ishikawa	
31	Tottori		3	3		2		2	4	3	2	2	1	1	1	3	5	2	5	1	3		2	1	46	Tottori	
2	Aomori	4	10	5		4			5		3	2	2	1	4	1	4		2	2	3				52	Aomori	
36	Tokushima	4	5	5		5		1	1		1		1		1	1	3		4		1	1	3		37	Tokushima	
39	Kochi	2	3	1		3		2	2		2	2	2	3	2				1				1		26	Kochi	
47	Okinawa			1				2	3										1		1				8	Okinawa	
	total	676	733	634		563		553	640	657	578	356	465	440	429	385	377	382	428	439	457	455	428	506	10,581	total	

Data source : <https://anzeninfo.mhlw.go.jp/user/anzen/tok/anst00.htm>

Return to https://www.jisha.or.jp/english/statistics/202211_23.html