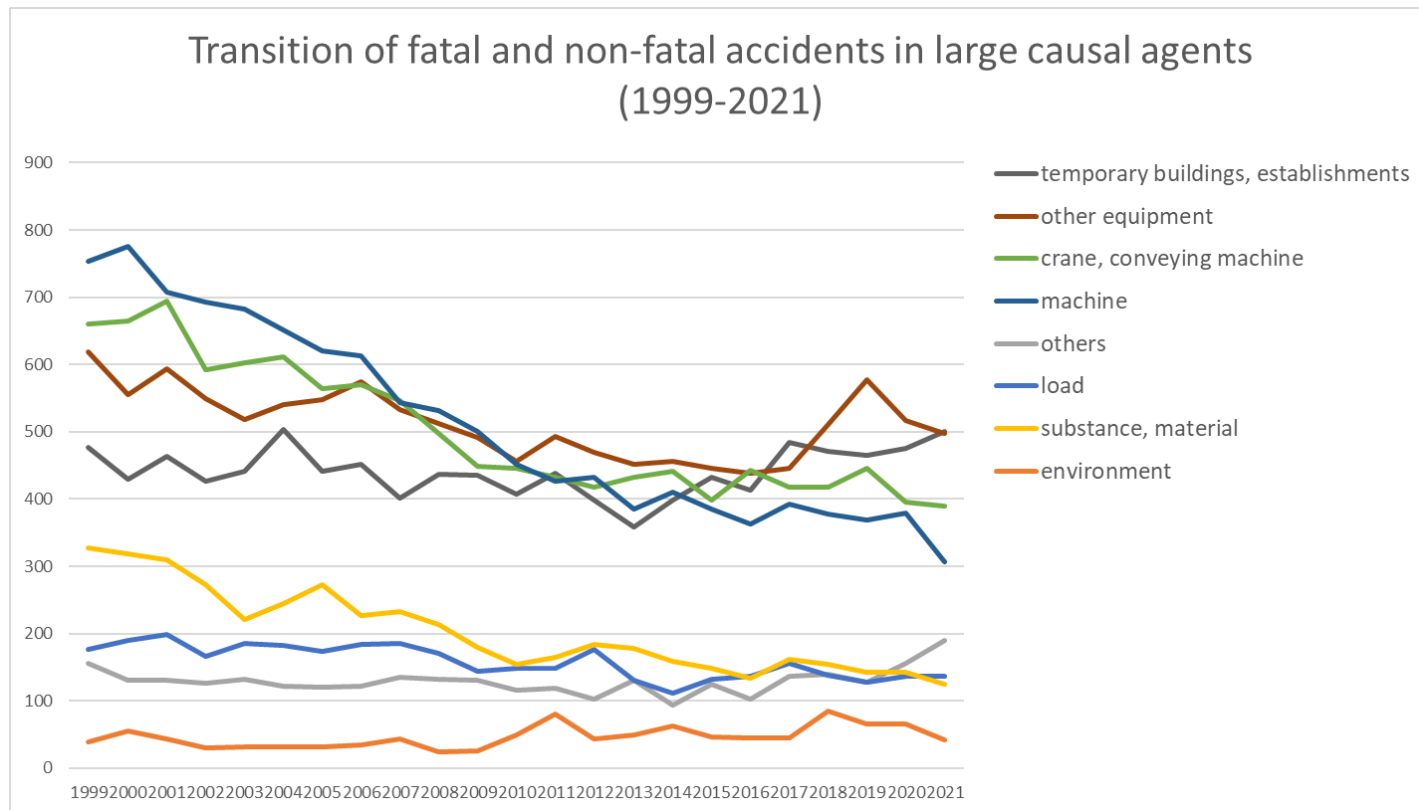
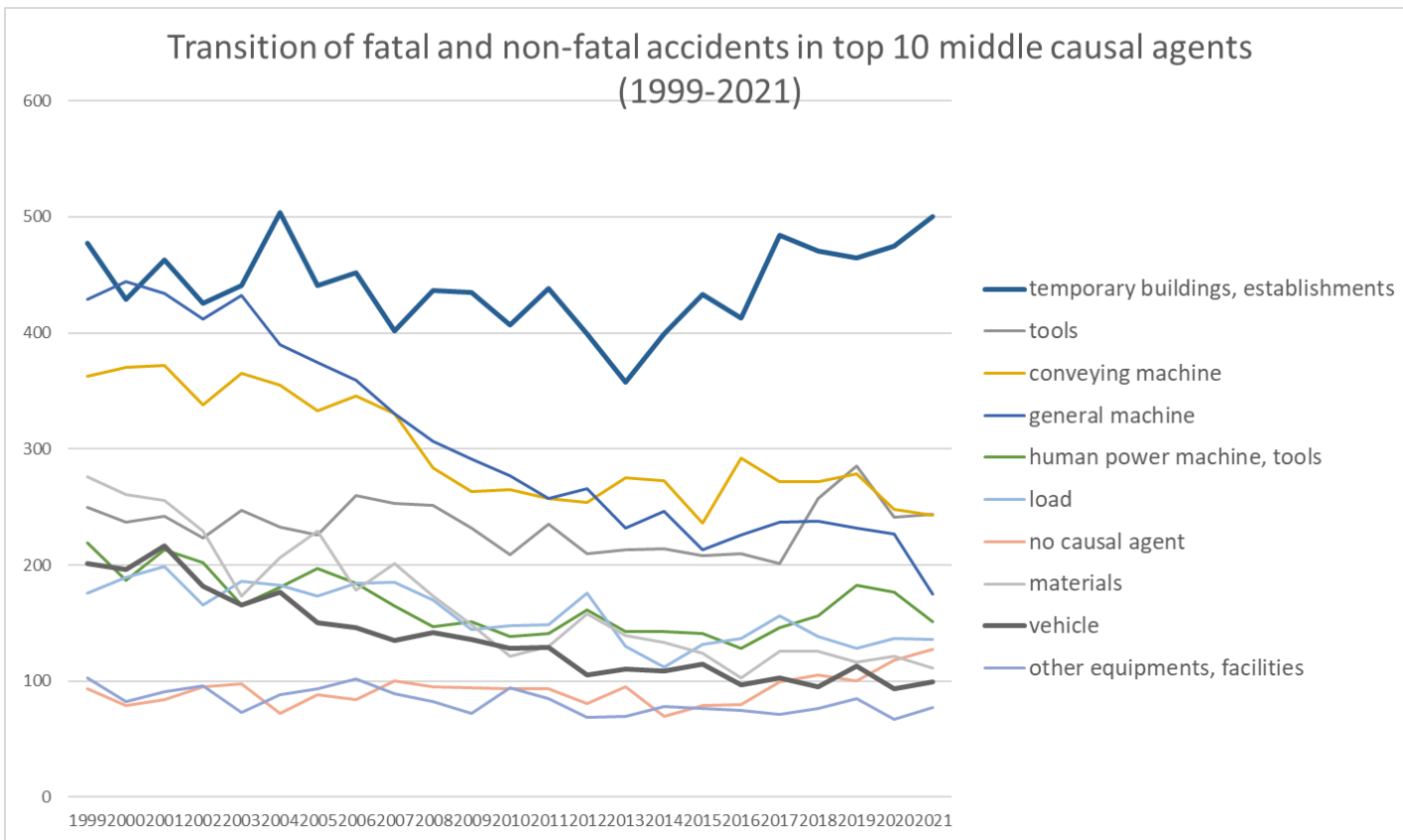


Transition of fatal and non-fatal accidents in each element like as causal agents, type of accidents, etc. in code no. 0117 other manufacturing (1999-2021)

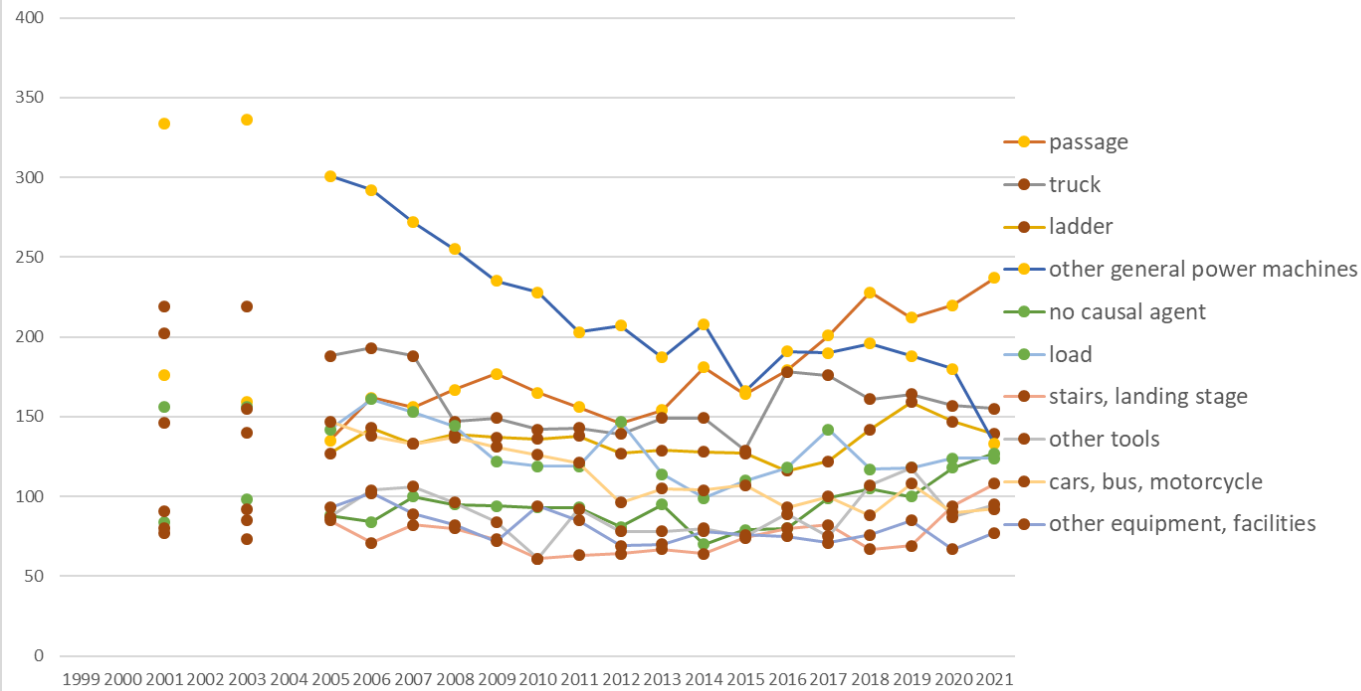


Transition of fatal and non-fatal accidents in large causal agents in code no. 0117 other manufacturing (1999-2021)



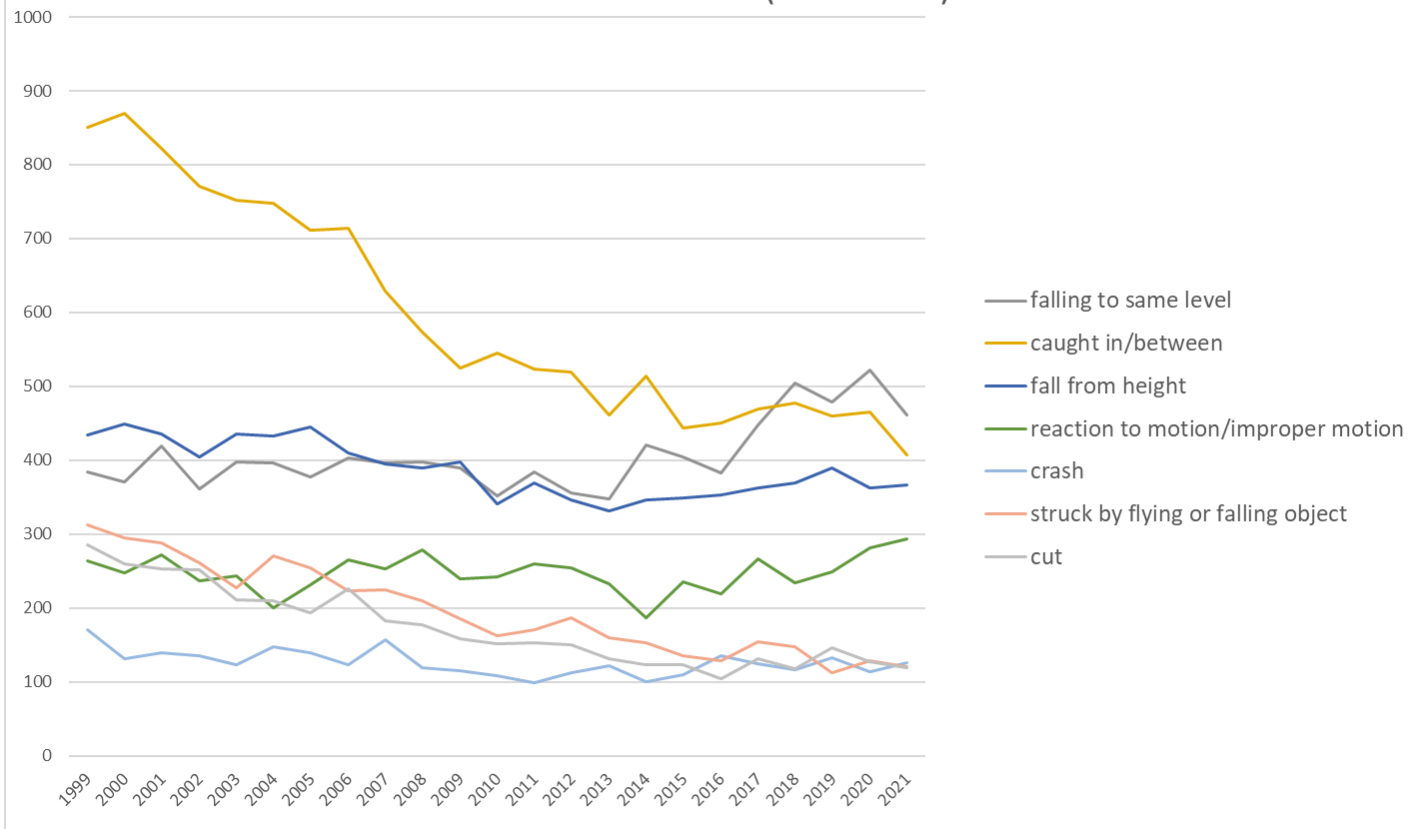
Transition of fatal and non-fatal accidents in middle causal agents in code no. 0117 other manufacturing (1999-2021)

Transition of fatal and non-fatal accidents in top 10 small causal agents
(1999-2021)



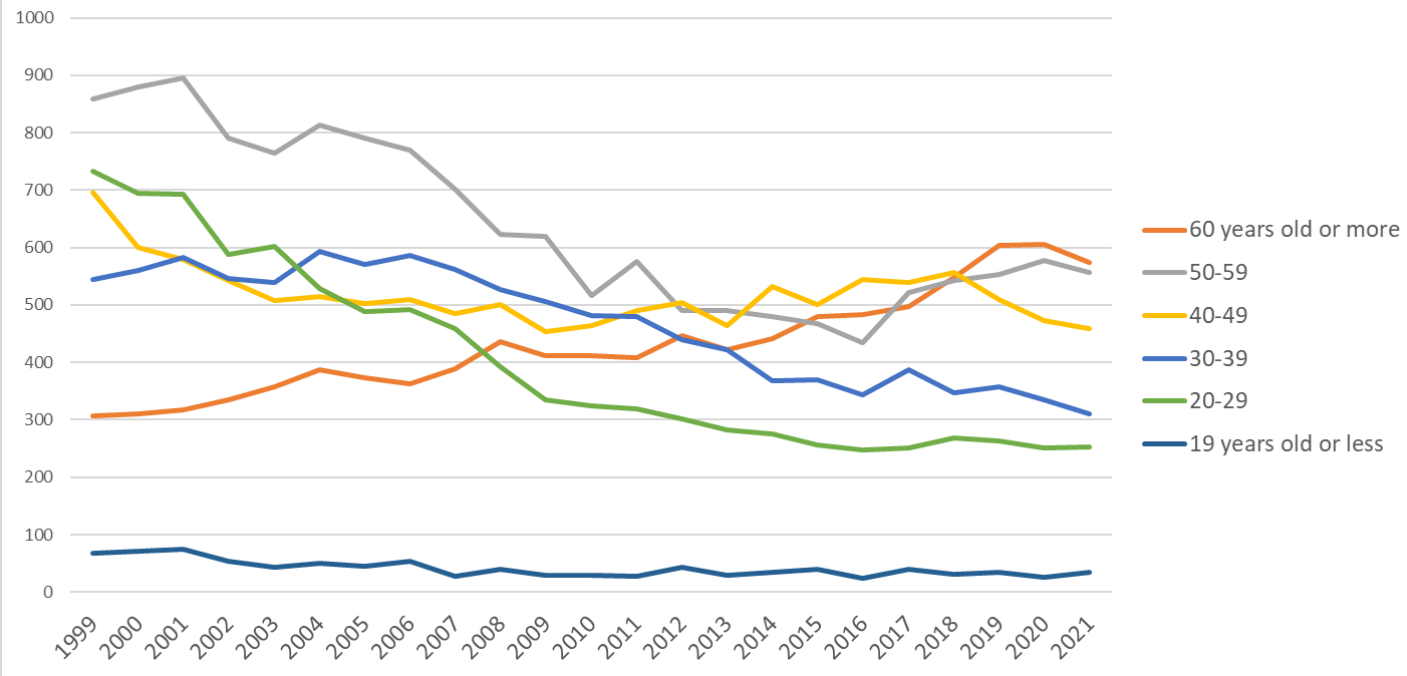
Transition of fatal and non-fatal accidents in small causal agents in code no. 0117 other manufacturing (1999-2021)

Transition of fatal and non-fatal accidents in top 7 type of accidents
(1999-2021)



Transition of fatal and non-fatal accidents in type of accidents in code no. 0117 other manufacturing (1999-2021)

Transition of fatal and non-fatal accidents in workers ages (1999-2021)



Transition of fatal and non-fatal accidents in workers ages in code no. 0117 other manufacturing (1999-2021)

1	Hokkaido	184	168	177		181		135	159	151	143	121	112	119	138	128	122	142	133	151	151	145	132	138	3,030	Hokkaido
22	Shizuoka	105	136	130		141		114	107	108	89	87	90	83	94	78	83	97	82	91	99	102	95	117	2,128	Shizuoka
12	Chiba	96	133	118		100		90	117	124	108	87	111	97	98	99	83	92	78	93	113	108	105	104	2,154	Chiba
28	Hyogo	136	150	135		156		125	130	114	112	136	103	116	109	84	84	85	89	99	81	91	94	96	2,325	Hyogo
13	Tokyo	156	152	168		130		156	132	143	136	120	119	109	98	112	86	96	104	85	105	103	95	92	2,497	Tokyo
14	Kanagawa	164	151	167		135		140	161	135	134	115	127	121	111	116	112	91	115	128	106	123	112	85	2,649	Kanagawa
40	Fukuoka	111	112	116		111		105	114	97	103	100	84	81	100	87	76	82	77	81	99	88	88	74	1,986	Fukuoka
34	Hiroshima	97	64	66		57		84	75	73	69	64	39	50	63	41	60	43	52	69	51	65	60	65	1,307	Hiroshima
8	Ibaraki	86	70	79		74		56	58	70	51	62	50	45	68	57	67	65	60	67	67	61	59	55	1,327	Ibaraki
15	Niigata	107	79	81		66		65	63	62	65	65	55	53	58	68	58	53	58	67	72	50	53	50	1,348	Niigata
4	Miyagi	52	68	58		61		44	48	56	50	36	35	73	32	47	47	38	35	52	48	37	52	49	1,018	Miyagi
43	Kumamoto	37	35	45		34		43	33	39	55	35	43	45	31	41	37	41	29	35	35	40	37	47	817	Kumamoto
9	Tochigi	54	50	69		48		54	54	45	42	33	47	48	46	32	43	48	43	50	36	58	39	46	985	Tochigi
26	Kyoto	64	41	53		56		58	64	58	57	51	45	42	46	50	35	40	52	46	51	29	47	44	1,029	Kyoto
10	Gunma	91	73	78		55		39	55	50	42	39	41	49	39	50	38	43	45	43	53	46	52	37	1,058	Gunma
33	Okayama	53	73	65		59		66	51	49	67	42	44	41	41	47	29	31	37	41	43	60	51	37	1,027	Okayama
21	Gifu	80	64	60		53		61	67	54	56	57	45	51	51	40	45	44	44	38	35	43	54	36	1,078	Gifu
46	Kagoshima	40	43	39		37		32	34	26	45	36	33	29	37	37	30	33	39	28	35	36	31	35	735	Kagoshima
24	Mie	62	56	48		45		58	45	44	47	57	45	49	31	33	49	33	33	45	35	58	38	33	944	Mie
38	Ehime	48	46	44		26		48	30	37	34	35	42	34	30	31	35	18	32	35	29	28	33	32	727	Ehime
25	Shiga	28	24	22		43		31	29	41	27	25	22	17	27	19	28	31	13	14	31	16	28	32	548	Shiga
7	Fukushima	49	52	54		36		37	36	50	41	35	40	29	32	31	26	31	35	27	38	37	35	30	781	Fukushima
47	Okinawa	26	22	26		25		25	21	19	19	26	22	27	15	17	22	15	24	16	23	25	22	30	467	Okinawa
20	Nagano	39	59	45		43		41	41	38	34	32	20	31	20	32	40	38	30	40	41	29	32	28	753	Nagano
45	Miyazaki	38	28	44		36		27	29	32	27	20	26	29	31	22	26	18	30	31	34	34	25	25	612	Miyazaki

42	Nagasaki	32	29	31		19		27	24	23	22	25	29	27	25	29	22	24	19	22	17	25	31	23	525	Nagasaki
17	Ishikawa	18	28	32		27		22	30	28	35	15	16	30	22	24	16	21	21	29	24	21	29	23	511	Ishikawa
44	Oita	38	41	23		29		29	32	21	36	23	17	23	19	14	19	21	24	16	18	13	28	23	507	Oita
29	Nara	23	27	39		33		31	15	27	20	36	23	19	15	15	20	22	19	20	27	20	20	23	494	Nara
16	Toyama	42	42	32		17		23	18	20	17	17	19	25	17	17	24	18	29	27	25	20	31	22	502	Toyama
6	Yamagata	40	17	30		29		25	31	29	19	21	25	21	29	24	29	19	15	30	17	21	22	21	514	Yamagata
41	Saga	21	19	24		27		23	23	24	22	16	18	23	20	16	14	19	27	20	24	24	25	21	450	Saga
37	Kagawa	46	40	35		31		39	33	29	39	29	20	20	14	17	21	11	15	23	24	21	22	20	549	Kagawa
30	Wakayama	42	39	42		41		48	36	28	18	26	20	23	34	25	26	28	17	16	23	16	30	19	597	Wakayama
2	Aomori	38	29	31		28		28	24	29	18	20	23	23	23	20	21	25	17	20	21	19	21	19	497	Aomori
19	Yamanashi	16	20	17		12		16	20	18	14	17	23	24	21	11	19	14	12	14	10	14	7	18	337	Yamanashi
36	Tokushima	14	15	28		19		23	18	17	15	12	11	5	8	8	9	9	13	18	16	11	11	18	298	Tokushima
18	Fukui	22	22	18		13		24	25	17	14	13	11	19	19	21	15	11	16	10	27	13	21	17	368	Fukui
5	Akita	30	39	32		19		35	23	19	21	16	18	17	18	18	13	11	18	14	22	16	19	15	433	Akita
39	Kochi	41	27	41		22		17	18	32	14	11	17	20	8	10	19	19	8	9	10	21	10	15	389	Kochi
3	Iwate	28	35	35		27		26	27	15	22	20	15	38	21	19	26	21	15	28	20	12	23	12	485	Iwate
35	Yamaguchi	37	40	24		30		24	25	29	18	17	25	25	16	19	16	19	17	16	16	20	20	9	462	Yamaguchi
31	Tottori	15	26	15		11		15	16	14	7	9	10	7	7	7	5	9	6	10	9	8	10	9	225	Tottori
32	Shimane	22	21	19		15		20	17	17	16	11	10	11	15	7	16	12	11	12	18	19	15	7	311	Shimane
	total	3,206	3,116	3,140		2,815		2,771	2,774	2,622	2,518	2,353	2,228	2,302	2,224	2,113	2,132	2,114	2,076	2,238	2,292	2,320	2,266	2,187	51,807	total

Data source : <https://anzeninfo.mhlw.go.jp/user/anzen/tok/anst00.htm>

Return to https://www.jisha.or.jp/english/statistics/202211_23.html