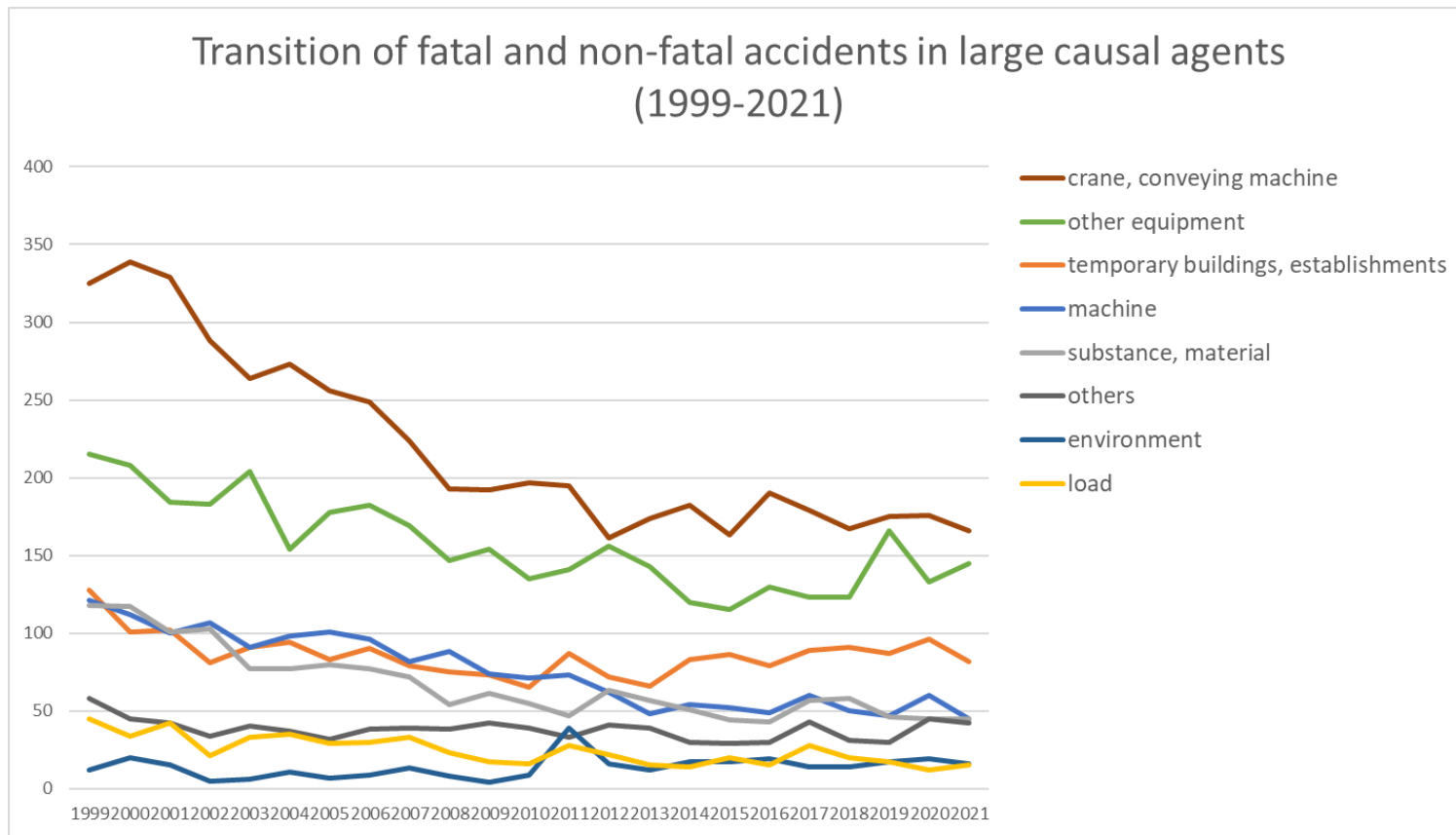
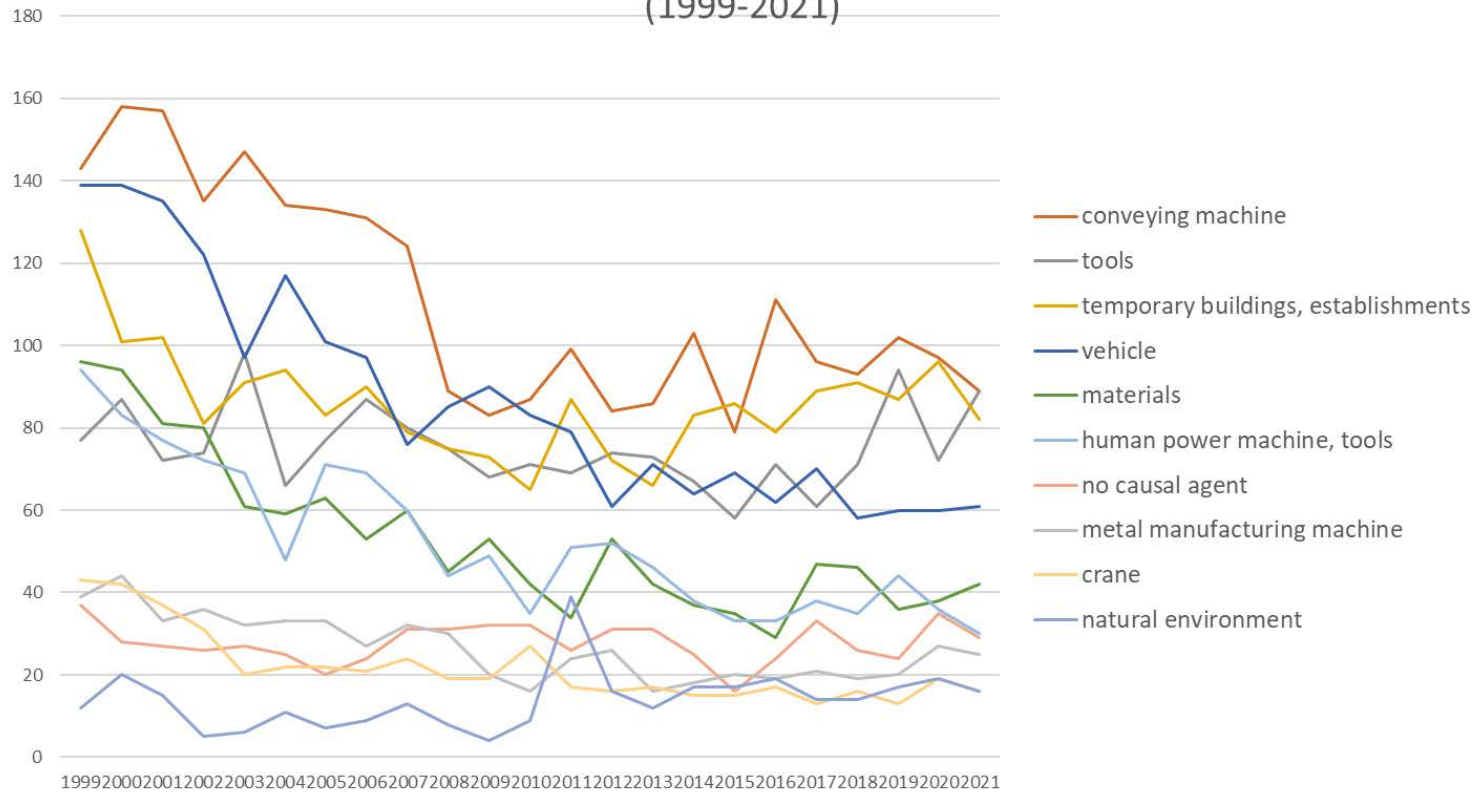


Transition of fatal and non-fatal accidents in each element like as causal agents, type of accidents, etc. in code no. 011701 auto mobile servicing (1999-2021)



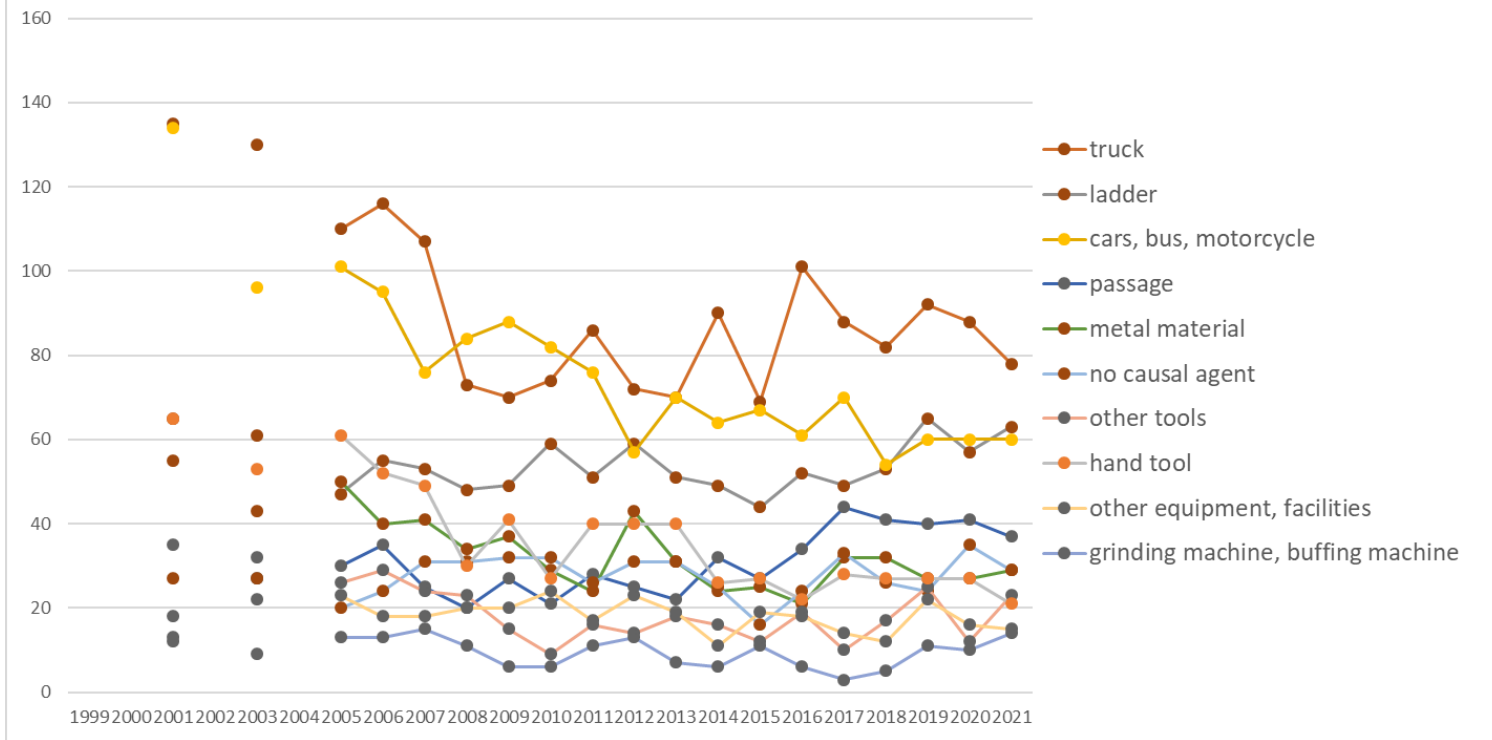
Transition of fatal and non-fatal accidents in large causal agents in code no. 011701 auto mobile servicing (1999-2021)

Transition of fatal and non-fatal accidents in top 10 middle causal agents
(1999-2021)



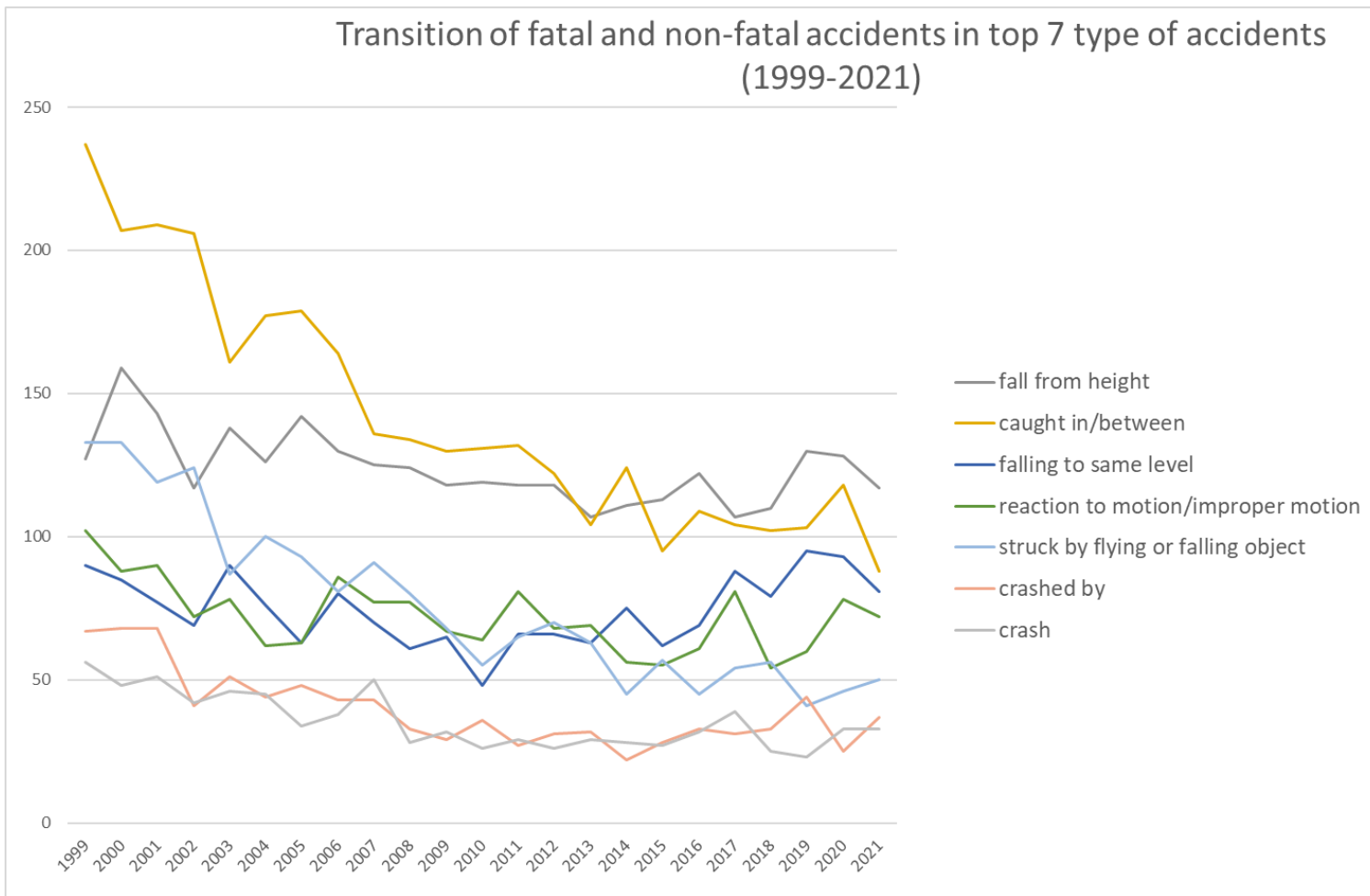
Transition of fatal and non-fatal accidents in middle causal agents in code no. 011701 auto mobile servicing (1999-2021)

Transition of fatal and non-fatal accidents in top 10 small causal agents (1999-2021)



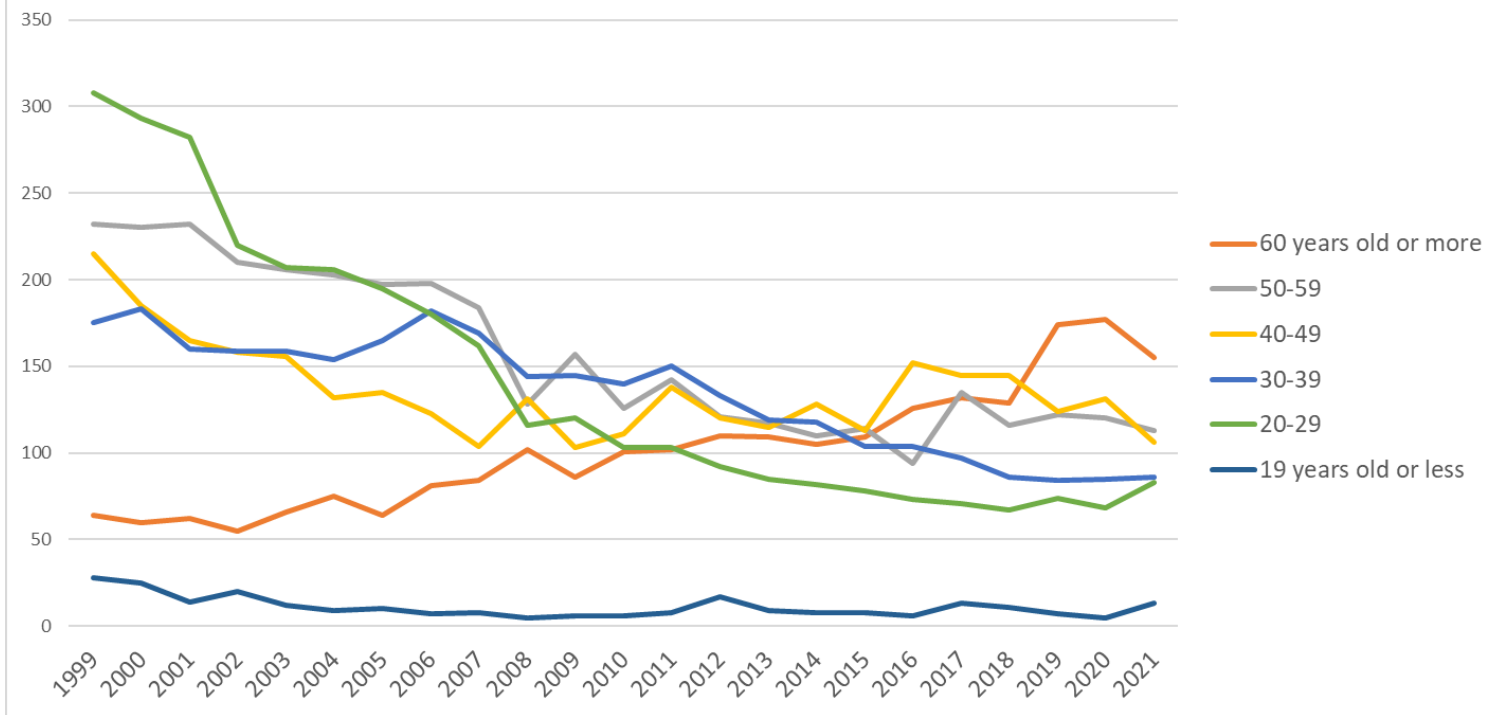
Transition of fatal and non-fatal accidents in small causal agents in code no. 011701 auto mobile servicing (1999-2021)

Transition of fatal and non-fatal accidents in top 7 type of accidents
(1999-2021)



Transition of fatal and non-fatal accidents in type of accidents in code no. 011701 auto mobile servicing (1999-2021)

Transition of fatal and non-fatal accidents in workers ages (1999-2021)



Transition of fatal and non-fatal accidents in workers ages in code no. 011701 auto mobile servicing (1999-2021)

8	August	82	77	65	84	64	75	63	52	76	44	47	50	49	42	44	41	37	36	59	38	55	36	53	1,269	August
3	March	91	92	86	69	69	85	68	63	69	50	58	55	89	46	56	50	47	50	39	46	54	53	48	1,433	March
10	October	86	80	83	61	66	52	55	70	63	58	63	55	52	43	52	50	48	37	58	43	46	66	47	1,334	October
1	January	82	83	82	62	71	60	65	75	59	62	43	56	58	55	30	52	42	55	53	49	51	56	45	1,346	January
5	May	92	79	93	65	56	76	59	90	55	49	52	34	52	45	39	50	50	65	48	49	46	42	42	1,328	May
11	November	95	79	66	76	63	56	70	66	52	45	51	45	43	57	53	47	36	34	35	48	58	37	41	1,253	November
9	September	88	85	75	60	53	51	72	49	61	63	52	44	55	39	40	31	30	46	37	48	47	47	41	1,214	September
2	February	71	80	82	67	68	62	60	68	58	68	59	52	46	74	58	49	53	52	54	48	41	41	40	1,351	February
4	April	80	78	67	73	76	67	66	59	53	49	48	45	52	50	42	51	41	49	58	37	45	43	40	1,269	April
12	December	77	68	65	53	67	64	44	66	58	37	47	34	34	43	46	42	52	46	43	47	49	48	38	1,168	December
	total	1,022	976	915	822	806	779	766	771	711	626	617	587	643	593	554	551	526	555	593	554	585	586	556	15,694	total

Transition of fatal and non-fatal accidents in prefectures in code no. 011701 auto mobile servicing (1999-2021)

code	Prefecture	1999	2000	2001	2002	2003	2004	2005	2006	2007	2008	2009	2010	2011	2012	2013	2014	2015	2016	2017	2018	2019	2020	2021	total	Prefecture
1	Hokkaido	77	68	68		76		52	71	66	47	46	52	46	52	52	46	49	64	62	55	58	65	51	1,223	Hokkaido
23	Aichi	57	47	39		36		28	34	39	34	29	29	21	21	29	17	24	29	30	25	35	27	32	662	Aichi
22	Shizuoka	19	32	28		33		20	32	21	18	18	18	22	21	19	18	25	22	23	20	20	16	27	472	Shizuoka
40	Fukuoka	35	33	42		30		28	41	35	31	30	26	18	23	26	25	20	22	27	28	33	21	26	600	Fukuoka
27	Osaka	50	41	50		38		41	52	28	36	33	28	37	42	24	23	23	21	28	30	23	27	25	700	Osaka
12	Chiba	28	47	25		24		21	37	30	21	21	23	33	17	27	23	24	27	21	28	23	20	24	544	Chiba
13	Tokyo	54	53	48		39		38	34	33	17	24	23	21	18	23	20	14	18	15	13	22	16	21	564	Tokyo
15	Niigata	43	24	31		22		26	25	16	20	25	15	21	18	21	20	17	26	22	20	12	17	20	461	Niigata
4	Miyagi	21	18	22		19		14	13	14	13	15	12	29	13	16	15	15	10	17	15	14	14	19	338	Miyagi
11	Saitama	28	35	21		34		17	20	16	17	21	18	16	17	18	10	13	16	24	16	22	26	18	423	Saitama

28	Hyogo	30	39	40		41		36	31	27	18	30	19	26	27	15	15	26	16	20	21	16	19	16	528	Hyogo
21	Gifu	25	24	22		16		20	22	15	22	20	12	12	11	10	13	14	13	10	14	11	15	16	337	Gifu
34	Hiroshima	27	24	23		20		23	13	17	14	16	9	11	17	10	12	14	14	18	11	12	11	15	331	Hiroshima
47	Okinawa	18	14	14		10		9	12	6	4	11	7	9	3	4	12	6	10	4	5	13	8	15	194	Okinawa
8	Ibaraki	40	23	21		21		15	16	17	11	22	12	11	21	19	9	11	10	10	17	12	9	13	340	Ibaraki
26	Kyoto	20	15	13		13		19	13	15	17	14	12	14	13	6	14	9	12	13	8	4	16	13	273	Kyoto
14	Kanagawa	30	30	28		25		26	25	30	17	24	20	16	22	14	17	18	16	29	18	22	16	12	455	Kanagawa
20	Nagano	24	26	22		17		12	22	12	12	16	6	20	8	11	20	16	11	13	20	8	14	12	322	Nagano
33	Okayama	23	27	17		19		25	16	12	17	15	16	16	12	10	7	8	8	14	12	21	15	12	322	Okayama
44	Oita	16	19	13		15		11	11	11	16	11	9	12	9	8	10	9	8	8	4	7	14	11	232	Oita
43	Kumamoto	14	18	17		10		15	3	11	19	11	10	16	9	7	12	11	9	7	6	11	4	11	231	Kumamoto
7	Fukushima	30	22	18		14		10	13	24	15	10	20	7	13	14	9	7	12	9	12	14	12	10	295	Fukushima
38	Ehime	20	20	15		11		22	10	9	13	9	8	12	11	19	8	11	8	10	9	13	15	10	263	Ehime
10	Gunma	18	15	14		10		13	10	13	7	7	11	12	8	9	10	10	11	9	6	7	12	10	222	Gunma
2	Aomori	22	9	17		12		9	11	9	7	6	8	8	13	7	13	6	5	10	7	9	10	9	207	Aomori
42	Nagasaki	15	14	11		6		8	9	13	6	9	11	14	8	11	13	6	9	6	6	10	11	9	205	Nagasaki
18	Fukui	6	14	8		5		9	11	9	5	5	7	8	8	6	5	3	7	4	12	4	1	9	146	Fukui
6	Yamagata	12	7	13		16		12	15	10	2	9	11	13	12	10	9	3	5	10	6	3	10	8	196	Yamagata
5	Akita	12	18	13		4		15	12	5	14	5	7	7	9	9	7	5	7	6	7	6	7	7	182	Akita
17	Ishikawa	7	13	12		9		7	6	8	13	2	7	12	10	8	5	10	9	12	9	5	12	6	182	Ishikawa
30	Wakayama	18	16	10		17		12	12	9	4	7	9	3	12	8	6	10	6	1	6	1	6	6	179	Wakayama
37	Kagawa	14	11	7		7		12	6	7	11	6	5	4	5	1	7	6	2	6	5	7	6	6	141	Kagawa
31	Tottori	4	10	8		5		6	5	6	4	4	2	2	3	3	1	4	2	3	1	2	5	6	86	Tottori
9	Tochigi	11	11	17		9		11	12	10	10	4	5	8	9	7	7	6	13	9	6	12	4	5	186	Tochigi

45	Miyazaki	14	11	15		17		6	4	6	6	7	10	6	7	4	10	2	9	4	5	10	6	5	164	Miyazaki
39	Kochi	17	8	16		8		5	7	13	3	3	6	8	1	4	9	4	3	2	4	9	5	5	140	Kochi
25	Shiga	8	4	5		11		10	2	10	9	8	8	5	5	5	4	8	1	5	8	6	5	5	132	Shiga
24	Mie	20	16	21		13		21	18	9	12	12	13	12	10	11	11	7	14	12	4	15	8	4	263	Mie
3	Iwate	13	19	14		17		16	10	8	9	6	7	22	10	9	12	4	4	13	9	4	12	4	222	Iwate
16	Toyama	17	11	15		2		8	6	8	5	5	4	7	6	5	10	5	11	9	9	5	13	4	165	Toyama
41	Saga	6	6	6		8		7	2	5	5	2	3	7	4	4	4	5	2	6	7	8	4	4	105	Saga
46	Kagoshima	18	16	14		8		8	7	7	14	9	14	7	11	10	9	10	10	5	9	12	6	3	207	Kagoshima
29	Nara	10	10	10		12		8	9	10	8	11	9	13	2	6	4	8	3	6	6	10	10	3	168	Nara
36	Tokushima	2	7	10		9		12	8	7	9	5	6	5	4	1	7	4	6	7	7	6	5	3	130	Tokushima
35	Yamaguchi	14	12	10		8		11	9	12	8	6	10	8	8	8	3	10	5	9	3	4	8	2	168	Yamaguchi
32	Shimane	8	13	7		6		7	6	6	2	3	2	2	6	2	6	4	5	2	4	4	2	2	99	Shimane
19	Yamanashi	7	6	5		4		5	8	7	4	5	8	4	4	4	4	2	4	3	1		1	2	88	Yamanashi
	total	1,022	976	915		806		766	771	711	626	617	587	643	593	554	551	526	555	593	554	585	586	556	14,093	total

Data source : <https://anzeninfo.mhlw.go.jp/user/anzen/tok/anst00.htm>

Return to https://www.jisha.or.jp/english/statistics/202211_23.html