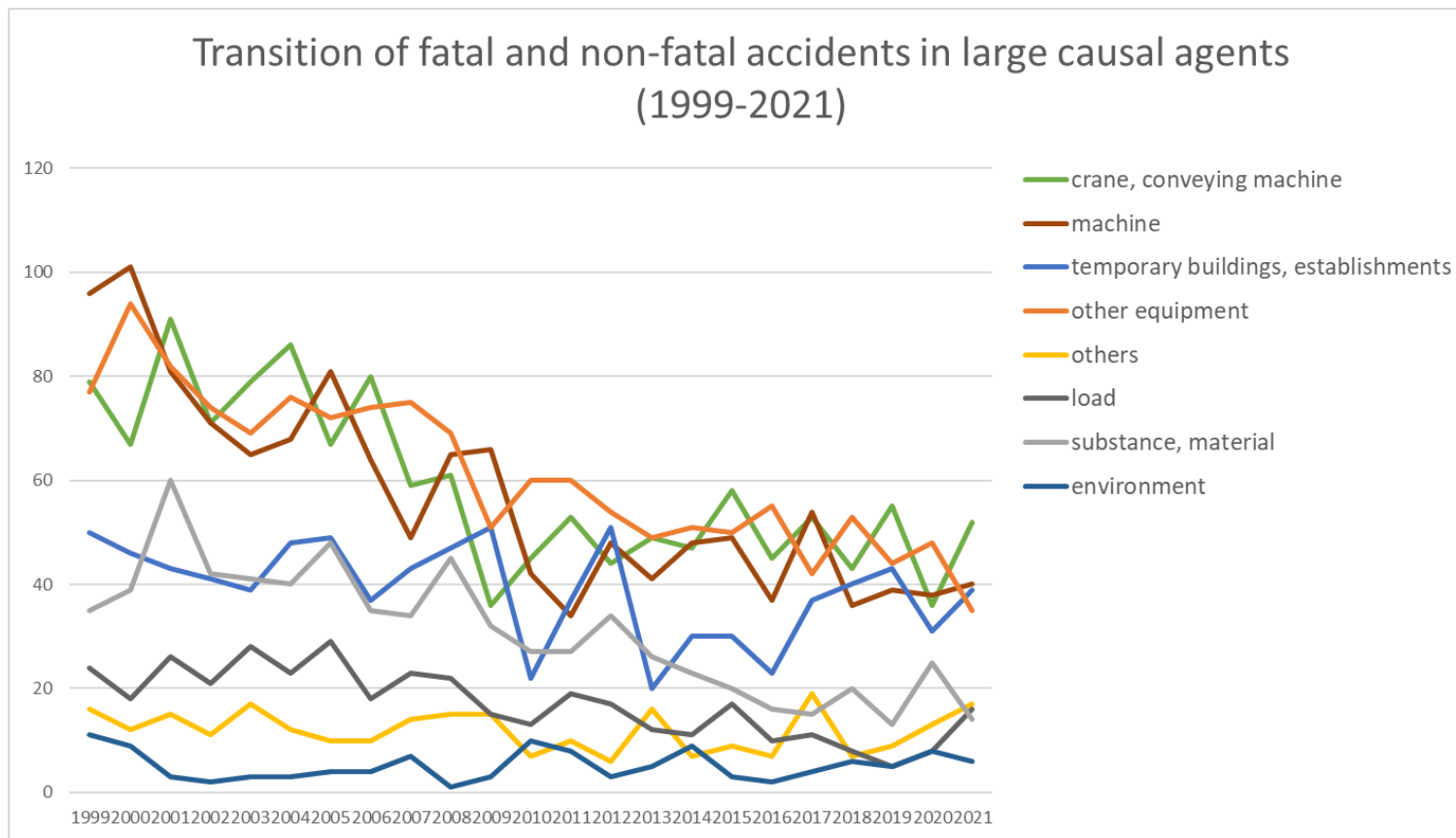
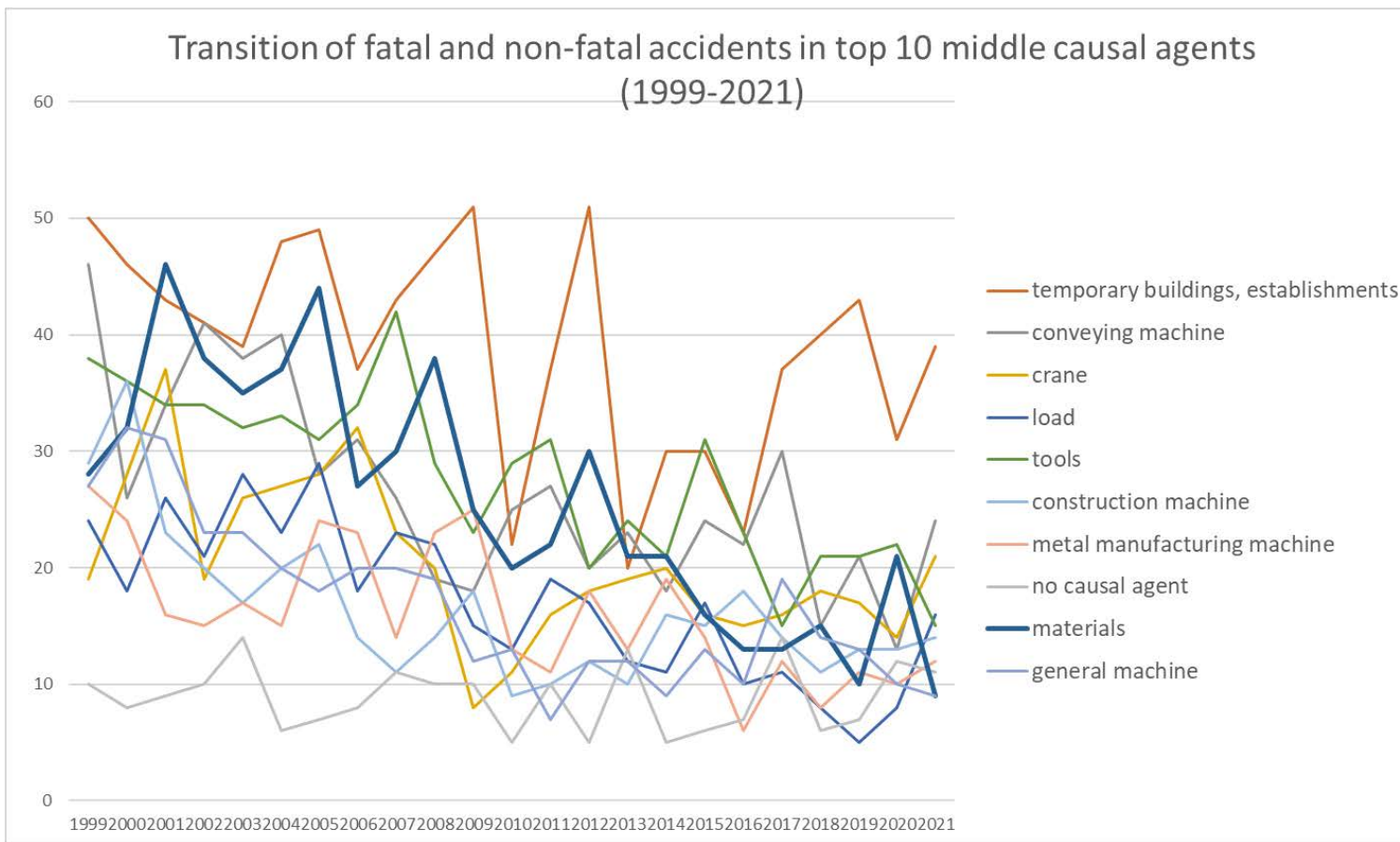


Transition of fatal and non-fatal accidents in each element like as causal agents, type of accidents, etc. in code no. 011702 machine repair (1999-2021)



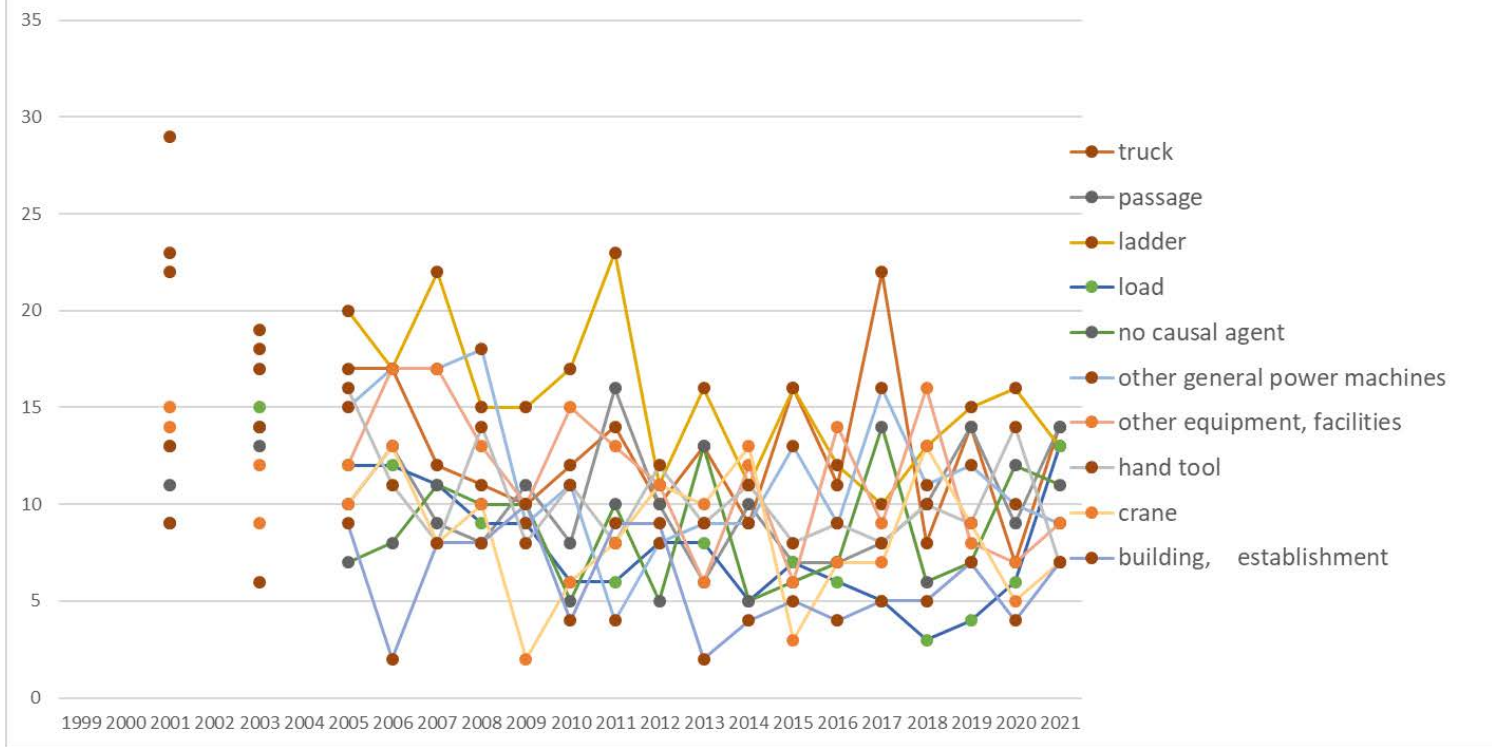
Transition of fatal and non-fatal accidents in large causal agents in code no. 011702 machine repair (1999-2021)

Transition of fatal and non-fatal accidents in top 10 middle causal agents
(1999-2021)



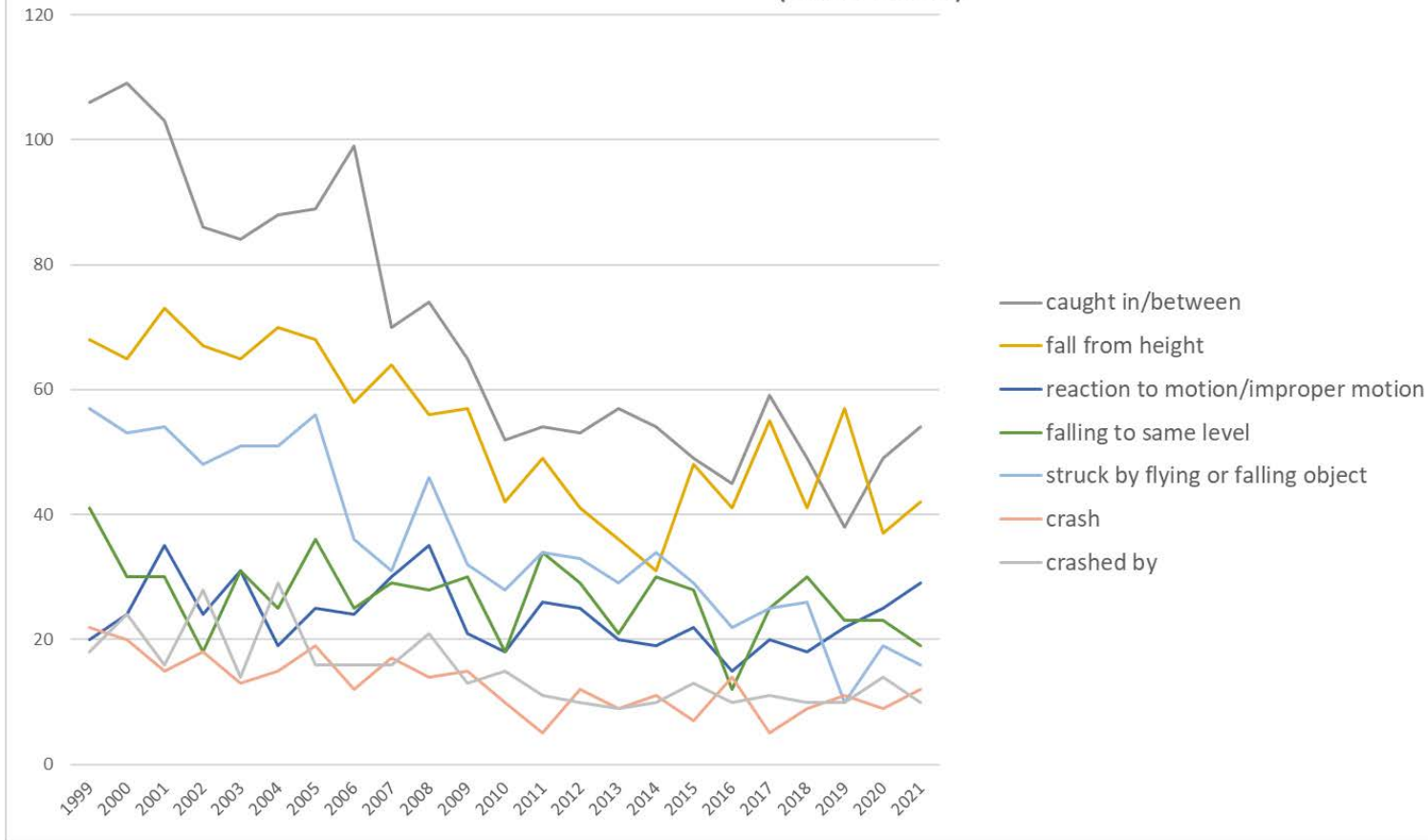
Transition of fatal and non-fatal accidents in middle causal agents in code no. 011702 machine repair (1999-2021)

Transition of fatal and non-fatal accidents in top 10 small causal agents (1999-2021)



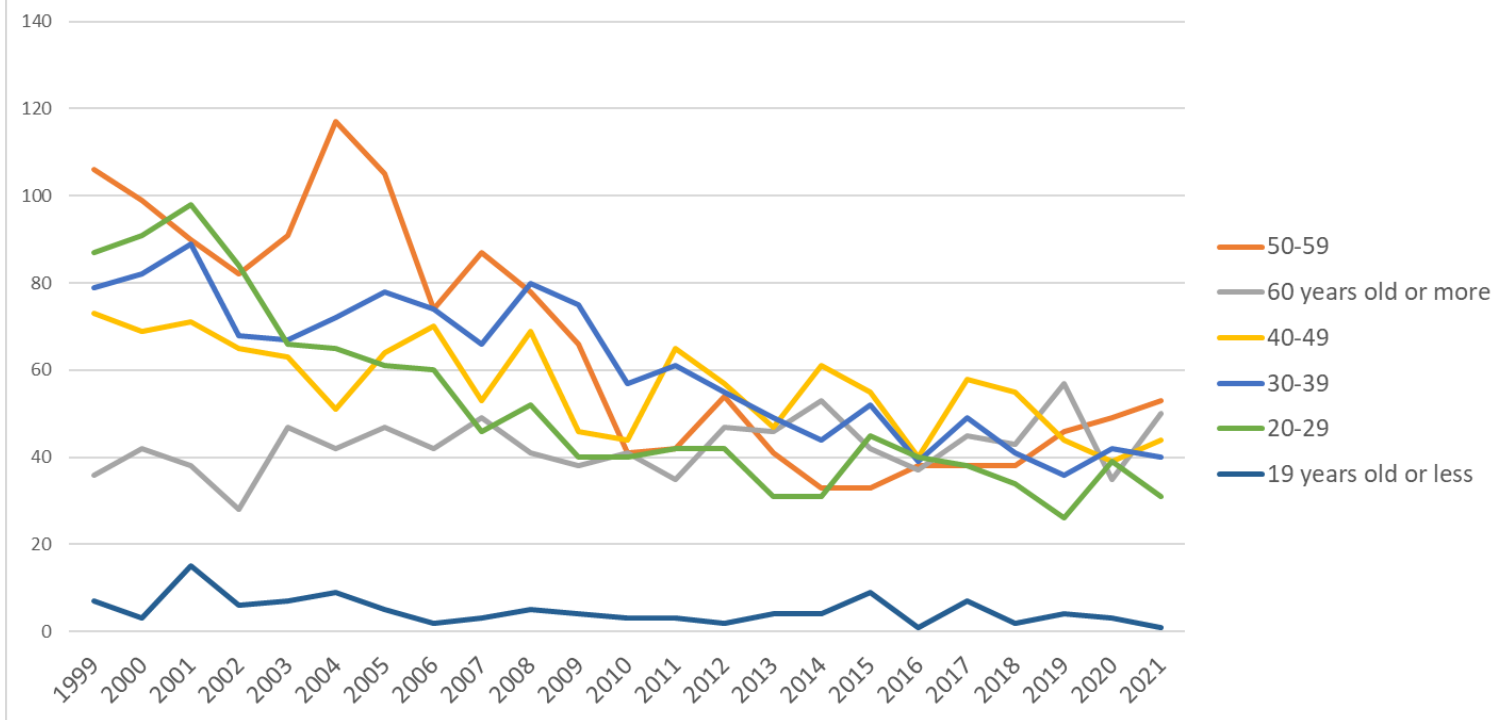
Transition of fatal and non-fatal accidents in small causal agents in code no. 011702 machine repair (1999-2021)

Transition of fatal and non-fatal accidents in top 7 type of accidents
(1999-2021)



Transition of fatal and non-fatal accidents in type of accidents in code no. 011702 machine repair (1999-2021)

Transition of fatal and non-fatal accidents in workers ages (1999-2021)



Transition of fatal and non-fatal accidents in workers ages in code no. 011702 machine repair (1999-2021)

code	Age	1999	2000	2001	2002	2003	2004	2005	2006	2007	2008	2009	2010	2011	2012	2013	2014	2015	2016	2017	2018	2019	2020	2021	total	Age
5	50-59	106	99	90	82	91	117	105	74	87	78	66	41	42	54	41	33	33	38	38	38	46	49	53	1,501	50-59
6	60 years old or more	36	42	38	28	47	42	47	42	49	41	38	41	35	47	46	53	42	37	45	43	57	35	50	981	60 years old or more
4	40-49	73	69	71	65	63	51	64	70	53	69	46	44	65	57	47	61	55	40	58	55	44	39	44	1,303	40-49
3	30-39	79	82	89	68	67	72	78	74	66	80	75	57	61	55	49	44	52	39	49	41	36	42	40	1,395	30-39
2	20-29	87	91	98	84	66	65	61	60	46	52	40	40	42	42	31	31	45	40	38	34	26	39	31	1,189	20-29
1	19 years old or less	7	3	15	6	7	9	5	2	3	5	4	3	3	2	4	4	9	1	7	2	4	3	1	109	19 years old or less
	total	388	386	401	333	341	356	360	322	304	325	269	226	248	257	218	226	236	195	235	213	213	207	219	6,478	total

Transition of fatal and non-fatal accidents in workers scales in code no. 011702 machine repair (1999-2021)

code	Workers scale	1999	2000	2001	2002	2003	2004	2005	2006	2007	2008	2009	2010	2011	2012	2013	2014	2015	2016	2017	2018	2019	2020	2021	total	Workers scale
2	10-29	127	130	119	103	110	116	116	99	104	108	77	70	94	76	82	81	80	66	84	73	79	76	95	2,165	10-29
1	9 workers or less	193	178	201	173	166	170	173	173	145	154	131	111	108	123	82	104	104	99	90	86	71	76	79	2,990	9 workers or less
3	30-49	29	40	46	26	27	28	38	26	23	24	29	21	20	20	25	20	21	12	25	23	27	15	17	582	30-49
4	50-99	19	18	20	23	19	23	17	14	17	21	21	8	15	22	16	13	20	5	14	12	15	19	15	386	50-99
5	100-299	10	19	13	6	16	9	10	7	10	15	9	12	7	6	10	6	7	8	13	16	9	14	10	242	100-299
6	300 workers or more	10	1	2	2	3	10	6	3	5	3	2	4	4	10	3	2	4	5	9	3	12	7	3	113	300 workers or more
	total	388	386	401	333	341	356	360	322	304	325	269	226	248	257	218	226	236	195	235	213	213	207	219	6,478	total

Transition of fatal and non-fatal accidents in months in code no. 011702 machine repair (1999-2021)

code	Month	1999	2000	2001	2002	2003	2004	2005	2006	2007	2008	2009	2010	2011	2012	2013	2014	2015	2016	2017	2018	2019	2020	2021	total	Month
8	August	31	29	35	25	23	29	34	32	35	31	31	22	17	29	19	18	19	13	26	20	11	17	28	574	August

7	July	34	33	38	33	29	22	29	21	29	29	24	20	30	21	27	19	28	17	24	20	18	20	23	588	July
2	February	35	39	26	29	27	26	25	25	21	23	23	23	25	30	17	20	22	19	19	18	21	22	22	557	February
1	January	31	27	32	26	25	33	31	25	32	32	21	27	15	20	19	26	17	13	13	18	19	14	22	538	January
4	April	40	31	39	38	31	36	24	23	26	27	21	12	18	13	15	19	19	18	18	16	15	14	21	534	April
10	October	28	32	41	35	37	36	26	28	22	30	22	15	21	24	17	15	19	19	19	22	16	16	18	558	October
3	March	34	36	35	27	38	29	33	33	30	30	21	16	22	23	20	21	23	16	15	16	30	19	17	584	March
9	September	31	38	45	23	41	27	29	30	26	17	18	23	23	29	17	29	25	19	23	14	11	19	16	573	September
5	May	40	31	26	37	32	25	30	33	27	40	14	17	20	25	12	16	16	18	12	19	18	22	15	545	May
12	December	27	32	28	16	19	26	24	23	11	24	27	14	16	10	16	13	12	15	20	19	11	8	15	426	December
6	June	33	36	28	24	22	44	37	20	20	18	25	21	24	17	22	14	19	13	26	14	20	24	14	535	June
11	November	24	22	28	20	17	23	38	29	25	24	22	16	17	16	17	16	17	15	20	17	23	12	8	466	November
	total	388	386	401	333	341	356	360	322	304	325	269	226	248	257	218	226	236	195	235	213	213	207	219	6,478	total

Transition of fatal and non-fatal accidents in prefectures in code no. 011702 machine repair (1999-2021)

code	Prefecture	1999	2000	2001	2002	2003	2004	2005	2006	2007	2008	2009	2010	2011	2012	2013	2014	2015	2016	2017	2018	2019	2020	2021	total	Prefecture
27	Osaka	29	28	37		37		23	24	13	29	13	17	23	18	14	22	22	16	20	18	17	13	18	451	Osaka
1	Hokkaido	26	26	32		24		19	19	19	28	17	4	18	16	14	20	26	12	14	19	13	10	18	394	Hokkaido
12	Chiba	13	29	19		14		21	27	12	20	21	15	15	20	17	14	10	6	18	13	14	14	17	349	Chiba
23	Aichi	30	34	28		28		22	27	21	26	21	22	19	18	18	15	18	13	15	11	14	16	13	429	Aichi
14	Kanagawa	38	32	21		24		27	29	15	27	10	13	16	12	20	14	5	11	17	11	12	8	13	375	Kanagawa
28	Hyogo	29	22	27		29		19	18	23	18	15	25	21	18	10		3	8	9	8	10	10	13	335	Hyogo
40	Fukuoka	13	19	16		18		20	13	17	17	20	11	14	21	16	11	10	5	11	14	10	12	12	300	Fukuoka
13	Tokyo	15	18	23		19		28	11	17	19	14	15	11	13	14	11	12	10	15	14	15	16	11	321	Tokyo
11	Saitama	25	12	13		20		14	13	16	13	21	10	5	11	6	7	11	10	8	7	5	7	9	243	Saitama

22	Shizuoka	5	13	25		13		17	10	16	7	19	12	3	12	11	6	9	14	9	3	8	8	9	229	Shizuoka
34	Hiroshima	14	2	7		7		13	17	12	11	6	5	8	10	5	10	4	6	10	6	7	10	9	179	Hiroshima
4	Miyagi	6	9	10		11		6	4	8	5	1	4	8	3	5	4	3	5	2	2	5	3	6	110	Miyagi
10	Gunma	6	4	4		1		2	3	5	8	5	7	8	5	1	1	5	2	6	2	4	5	6	90	Gunma
24	Mie	8	13	4		4		9	7	8	8	11	7	8	5	4	5	7	4	5	8	11	4	5	145	Mie
42	Nagasaki	7	7	9				3	3	3	8	5	1	1	4	6	1	6	1	4	2	3	6	5	85	Nagasaki
17	Ishikawa	1	4	4		2		2	5	3	2	2	1	4	3	3	2	1	3	3	2	2	2	4	55	Ishikawa
37	Kagawa	2		1				5	2	3	1		1	3		1	3		3	2	5	2	1	4	39	Kagawa
15	Niigata	14	10	11		6		8	9	13	10	6	1	8	10	5	8	11	5	7	10	10	5	3	170	Niigata
38	Ehime	6	4	4		5		4	4	4	2	1	6		1	4	2	3	7	3	4	1	5	3	73	Ehime
44	Oita	8	8	2		2		5	3	2	3	1	3	1	7	1	4	4	4	1	2	3	1	3	68	Oita
2	Aomori	5	5	3		5		3	2	4	1	4	6	5	3	2	1	5	2	1		1	2	3	63	Aomori
43	Kumamoto	4	2	1				6	2	2	3	2	4	1	1	2	6	1	3	2			1	3	46	Kumamoto
47	Okinawa	3	1	2		1		5		1	4		1	5		4		1	1	3	1		2	3	38	Okinawa
33	Okayama	4	9	6		3		3	3	6	6	4	3	4	5	6	2	4	5	3	2	5	3	2	88	Okayama
8	Ibaraki	4	8	5		7		9	4	6	2	3	3	2	4	2	3	4	1	1	3	1	7	2	81	Ibaraki
45	Miyazaki	4	3	12		3		4	2	2	5	2		2	2	2	2	3	2	7	5	3	2	2	69	Miyazaki
18	Fukui	8	4	4		2		9	3	4		2		4	4	1	3	1		3	4	3	3	2	64	Fukui
20	Nagano	1	4	5		6		1	3	3	3	4	2		1	1	4	4	1	4	4	4	7	2	64	Nagano
36	Tokushima			5		6		4	1	1	2	1	3		1	2	2	3	3	3	2		1	2	42	Tokushima
32	Shimane	1	2	2		2		4	1	3	3	3		1	3		3	1	2		2	5	1	2	41	Shimane
5	Akita	2	2	1		2		3	1	3	2	2	2		1	1		2	3	3	3	1	1	2	37	Akita
31	Tottori	3	7	3				1	3	1			3	1	1		2	2	1	1	1			2	32	Tottori

25	Shiga	3	2	1		1		2	1	1	1	1		1	1		3		1		2			2	23	Shiga
9	Tochigi	3	4	5		5		3	5	6	2	6	5	5	4	3	6	4	2	4	2	3	1	1	79	Tochigi
21	Gifu	7	3			5		5	7	4	7	2	3	6	4	2	4	4	5		2	3	3	1	77	Gifu
26	Kyoto	9	3	4		2		6	11	5	3	2		3	2	5	1	2	2	1	1		2	1	65	Kyoto
46	Kagoshima	2	4	4		1		2	6	2	3	4	1	1	1	4	3	3	5	2	6	3	2	1	60	Kagoshima
16	Toyama	6	9	7		5		3	1	2	1	4	1	4	1	1	3	1		3	1	1	1	1	56	Toyama
39	Kochi	6	4	9		5		2	2	6	1	1	1			1	2	4			1	2	1	1	49	Kochi
3	Iwate	3	2	5		1			4	1	2	1	1	1	2		2	3		3	2	1	3	1	38	Iwate
6	Yamagata	5	2	3		2		1	2	2	1	1	3		1			3		1	3			1	31	Yamagata
19	Yamanashi					1		1	1			1			2	1	3		1	1		1		1	14	Yamanashi
7	Fukushima	1	3	3		2		4	1	1	5	4	1	3	2	3	4	6	2	3	1	4	1		54	Fukushima
35	Yamaguchi	3	6	3		2		3	1	4	3	2	1	3	1		1		2	1	3	2	3		44	Yamaguchi
41	Saga	2	2	3		5		3	1	3		2	1	1			1		5	2	1	3	2		37	Saga
30	Wakayama	3		1		1		5	6			1		1	2		3	3		2		1	2		31	Wakayama
29	Nara	1	1	7		2		1		1	3	1	1		1		2	2	1	2					26	Nara
	total	388	386	401		341		360	322	304	325	269	226	248	257	218	226	236	195	235	213	213	207	219	5,789	total

Data source : <https://anzeninfo.mhlw.go.jp/user/anzen/tok/anst00.htm>

Return to https://www.jisha.or.jp/english/statistics/202211_23.html