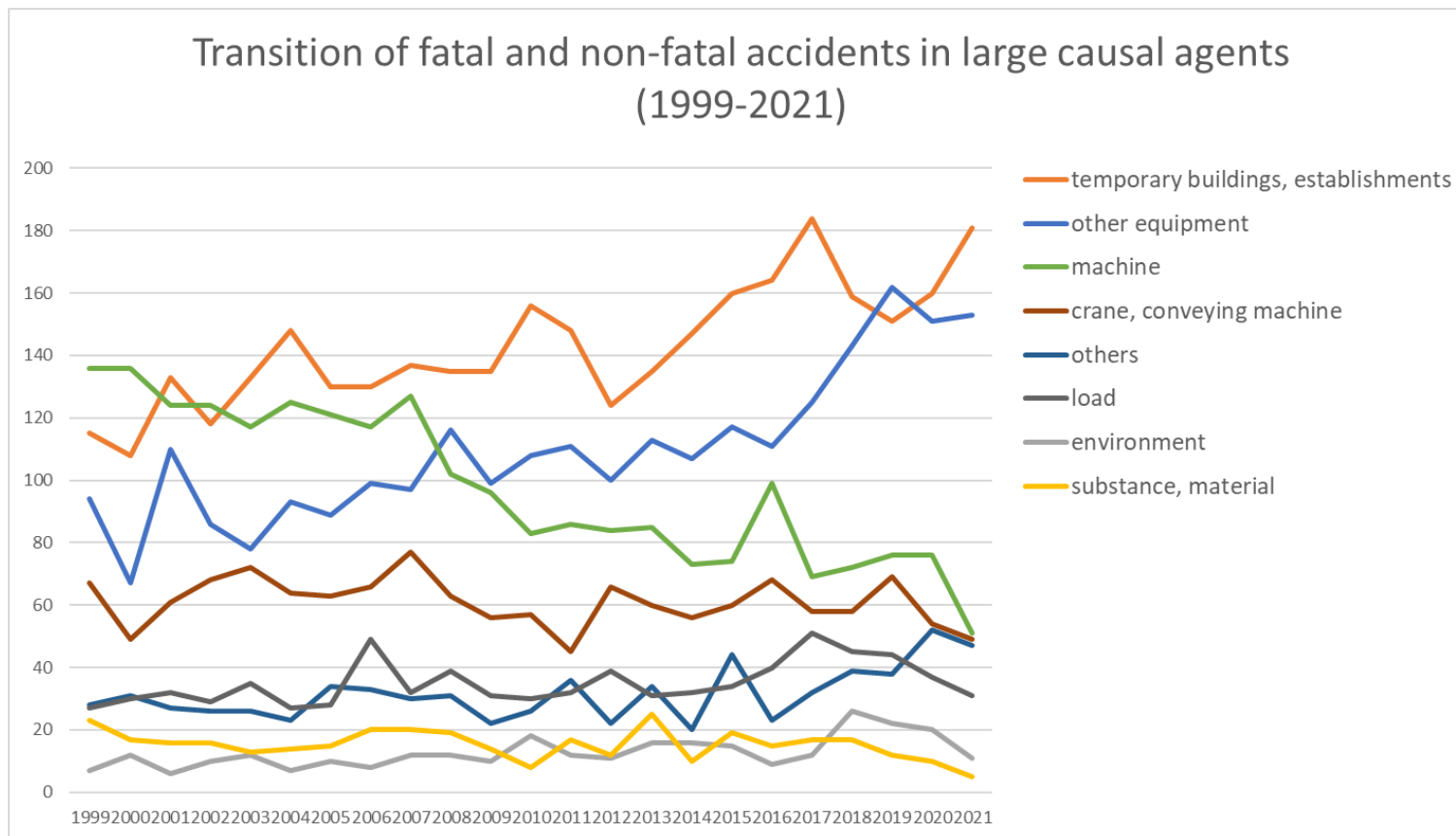
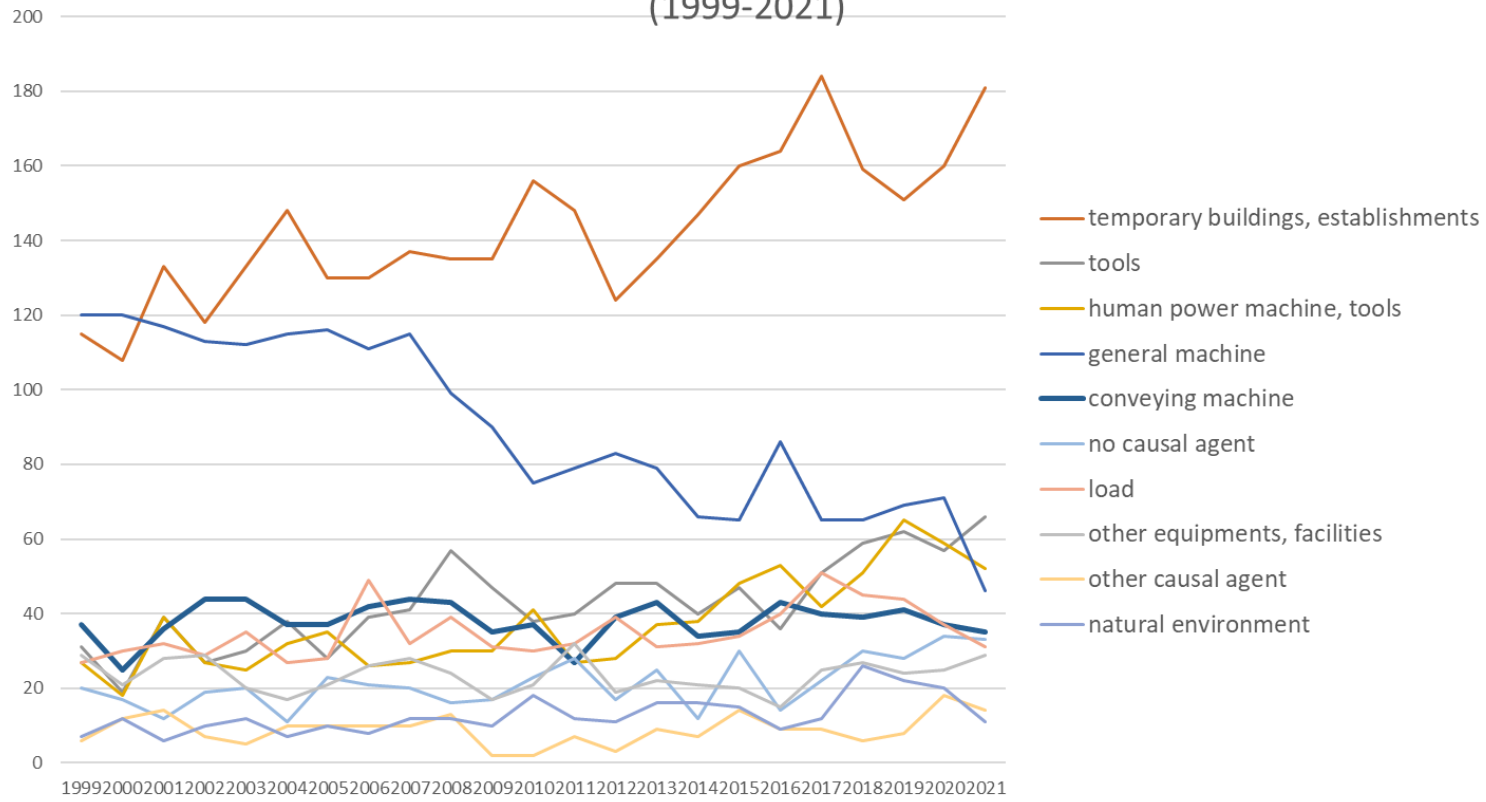


Transition of fatal and non-fatal accidents in each element like as causal agents, type of accidents, etc. in code no. 011703 cleaning (1999-2021)



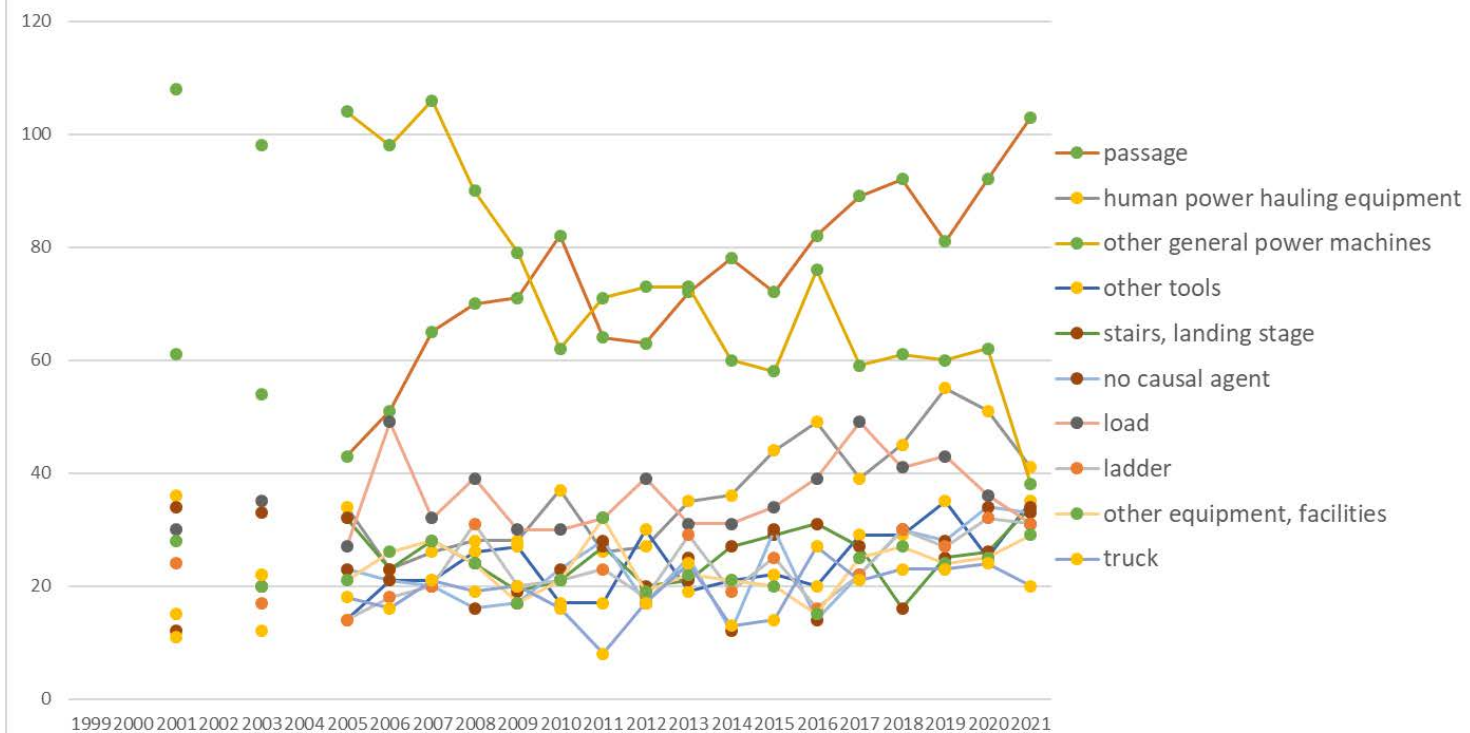
Transition of fatal and non-fatal accidents in large causal agents in code no. 011703 cleaning (1999-2021)

Transition of fatal and non-fatal accidents in top 10 middle causal agents
(1999-2021)



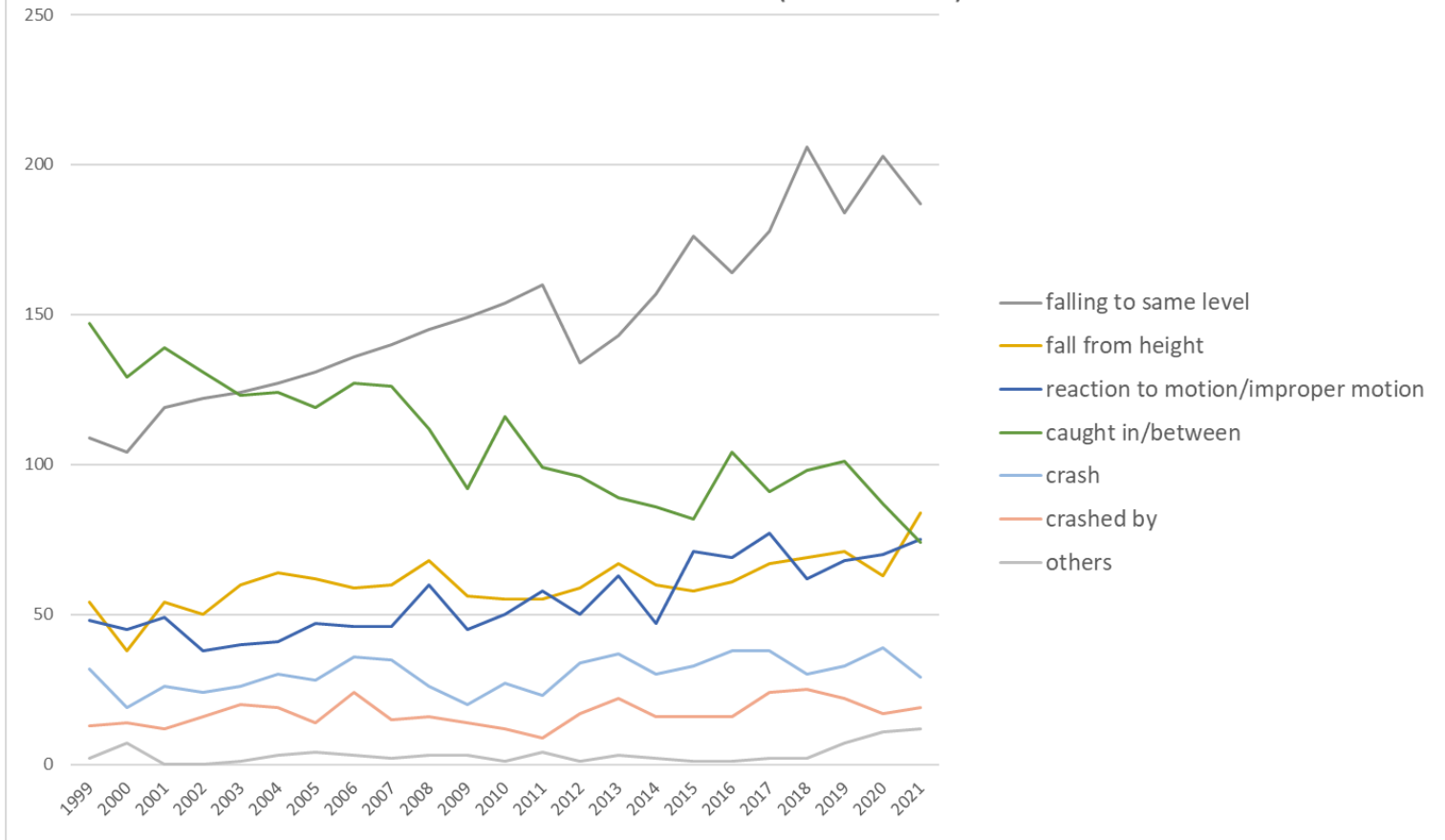
Transition of fatal and non-fatal accidents in middle causal agents in code no. 011703 cleaning (1999-2021)

Transition of fatal and non-fatal accidents in top 10 small causal agents
(1999-2021)



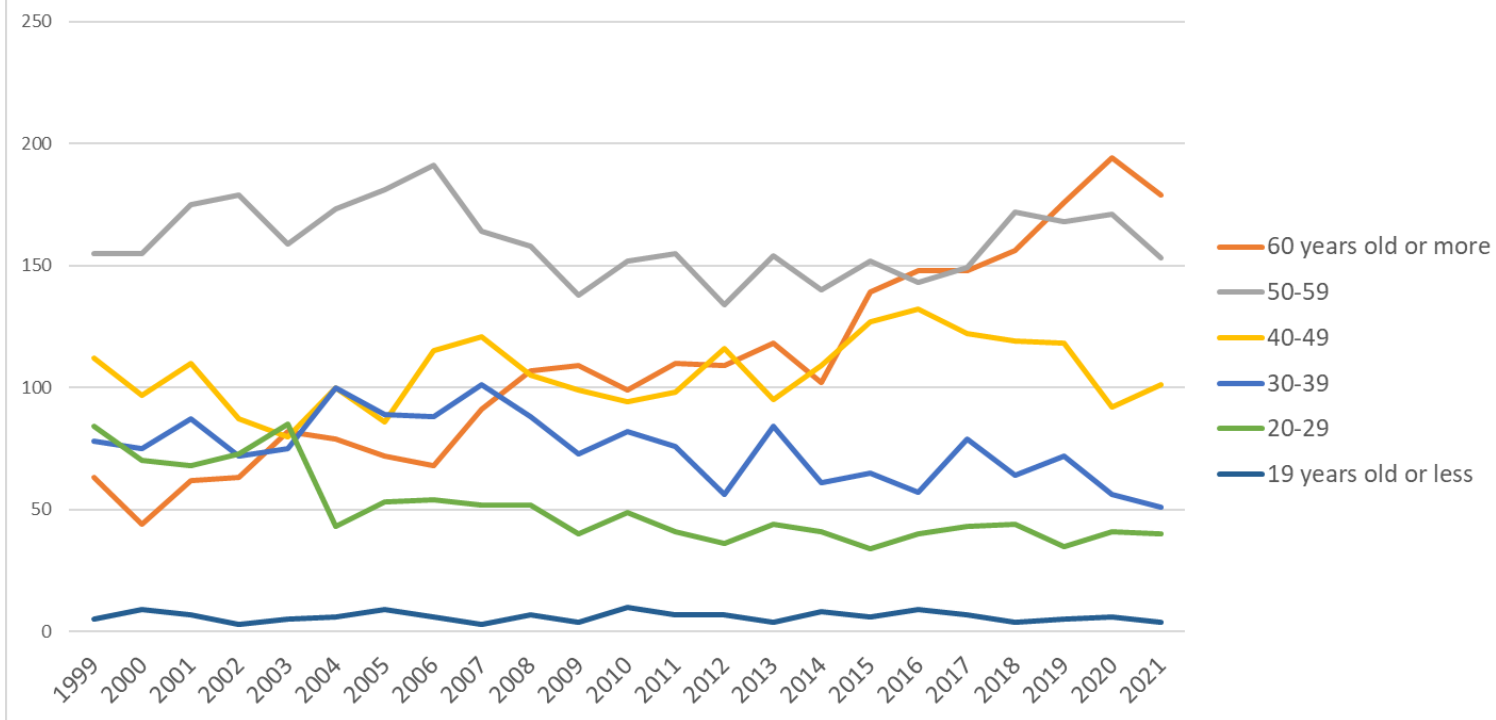
Transition of fatal and non-fatal accidents in small causal agents in code no. 011703 cleaning (1999-2021)

Transition of fatal and non-fatal accidents in top 7 type of accidents
(1999-2021)



Transition of fatal and non-fatal accidents in type of accidents in code no. 011703 cleaning (1999-2021)

Transition of fatal and non-fatal accidents in workers ages (1999-2021)



Transition of fatal and non-fatal accidents in workers ages in code no. 011703 cleaning (1999-2021)

| | | | | | | | | | | | | | | | | | | | | | | | | | | |
|----|-----------|-----|-----|-----|--|-----|--|-----|-----|-----|-----|-----|-----|-----|-----|-----|-----|-----|-----|-----|-----|-----|-----|-----|--------|-----------|
| 20 | Nagano | 3 | 5 | 3 | | 5 | | 8 | | 9 | 8 | 6 | 5 | 3 | 3 | 10 | 7 | 9 | 9 | 11 | 8 | 9 | 6 | 5 | 132 | Nagano |
| 42 | Nagasaki | 8 | 5 | 6 | | 6 | | 6 | 5 | 3 | 3 | 7 | 7 | 4 | 8 | 7 | 6 | 7 | 4 | 6 | 5 | 5 | 10 | 5 | 123 | Nagasaki |
| 38 | Ehime | 10 | 5 | 8 | | 4 | | 4 | 4 | 4 | 3 | 9 | 12 | 9 | 4 | 2 | 11 | 1 | 3 | 8 | 7 | 3 | 4 | 5 | 120 | Ehime |
| 45 | Miyazaki | 6 | 2 | 4 | | 3 | | 5 | 9 | 3 | 5 | 1 | 3 | 8 | 5 | 3 | 2 | 3 | 4 | 3 | 4 | 5 | 2 | 5 | 85 | Miyazaki |
| 33 | Okayama | 5 | 4 | 7 | | 8 | | | 3 | 7 | 2 | | 3 | 1 | 5 | 4 | 1 | 1 | 3 | 2 | 4 | 4 | 6 | 5 | 75 | Okayama |
| 19 | Yamanashi | 3 | 1 | 3 | | 1 | | 4 | 4 | 5 | 4 | 2 | 5 | 4 | 3 | 1 | 2 | 3 | | 4 | 4 | 8 | 2 | 5 | 68 | Yamanashi |
| 8 | Ibaraki | 7 | 2 | 6 | | 11 | | 5 | 13 | 19 | 5 | 8 | 6 | 7 | 12 | 11 | 15 | 10 | 15 | 9 | 7 | 7 | 9 | 4 | 188 | Ibaraki |
| 17 | Ishikawa | 1 | 3 | 6 | | 4 | | 4 | 8 | 5 | 6 | 6 | 5 | 10 | 6 | 9 | 6 | 4 | 2 | 6 | 5 | 9 | 6 | 4 | 115 | Ishikawa |
| 5 | Akita | 7 | 10 | 4 | | 5 | | 11 | 4 | 5 | 4 | 6 | 5 | 7 | 5 | 4 | 5 | 3 | 4 | 3 | 5 | 5 | 7 | 4 | 113 | Akita |
| 35 | Yamaguchi | 13 | 11 | 6 | | 11 | | 4 | 6 | 2 | 2 | 3 | 5 | 5 | 3 | 3 | 4 | 5 | 5 | 2 | 3 | 3 | 4 | 4 | 104 | Yamaguchi |
| 3 | Iwate | 4 | 8 | 9 | | 7 | | 4 | 3 | 3 | 4 | 8 | 4 | 8 | 4 | 7 | 4 | 7 | 7 | 7 | 6 | 3 | 6 | 3 | 116 | Iwate |
| 32 | Shimane | 6 | 3 | 5 | | 7 | | 4 | 8 | 7 | 10 | 4 | 7 | 5 | 2 | 4 | 6 | 4 | 2 | 7 | 4 | 7 | 6 | 3 | 111 | Shimane |
| 44 | Oita | 3 | 3 | 3 | | 3 | | 6 | 10 | 1 | 8 | 5 | 1 | 3 | 2 | 2 | | 4 | 4 | 3 | 8 | 1 | 4 | 3 | 77 | Oita |
| 18 | Fukui | 3 | 3 | 3 | | 3 | | 1 | 2 | 2 | 1 | 2 | 2 | 1 | 4 | 4 | 2 | 3 | 4 | | 3 | 1 | 5 | 3 | 52 | Fukui |
| 39 | Kochi | 5 | 5 | 4 | | 4 | | 1 | 5 | 6 | 4 | 2 | 2 | 5 | 1 | 3 | 5 | 3 | | 4 | | 3 | 1 | 1 | 64 | Kochi |
| 31 | Tottori | 2 | 3 | | | 2 | | 3 | 1 | 2 | 3 | 4 | | 1 | 3 | 3 | 2 | 1 | 1 | 3 | 3 | 2 | 2 | 1 | 42 | Tottori |
| | total | 497 | 450 | 509 | | 486 | | 490 | 522 | 532 | 517 | 463 | 486 | 487 | 458 | 499 | 461 | 523 | 529 | 548 | 559 | 574 | 560 | 528 | 10,678 | total |

Data source : <https://anzeninfo.mhlw.go.jp/user/anzen/tok/anst00.htm>

Return to https://www.jisha.or.jp/english/statistics/202211_23.html