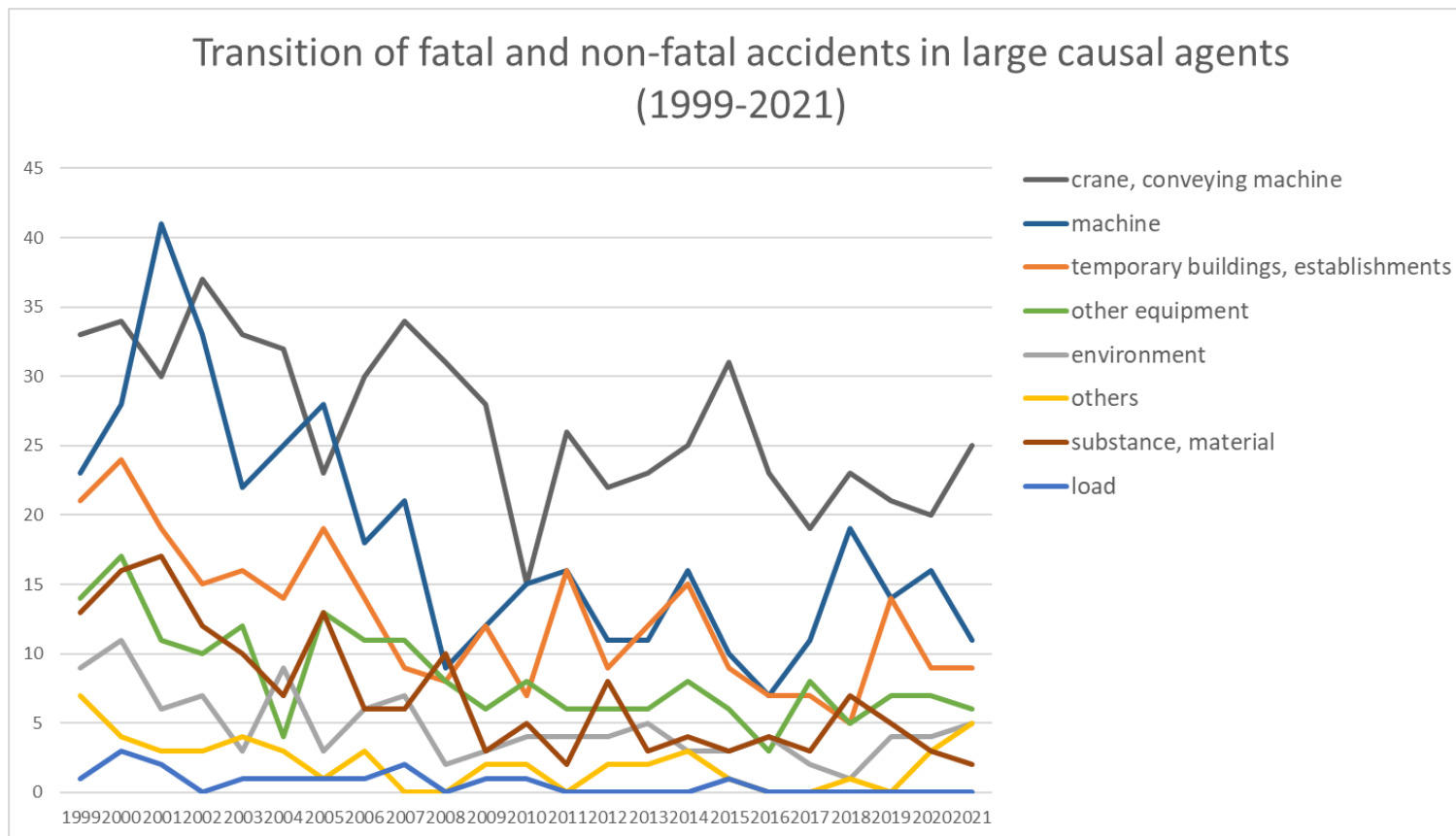
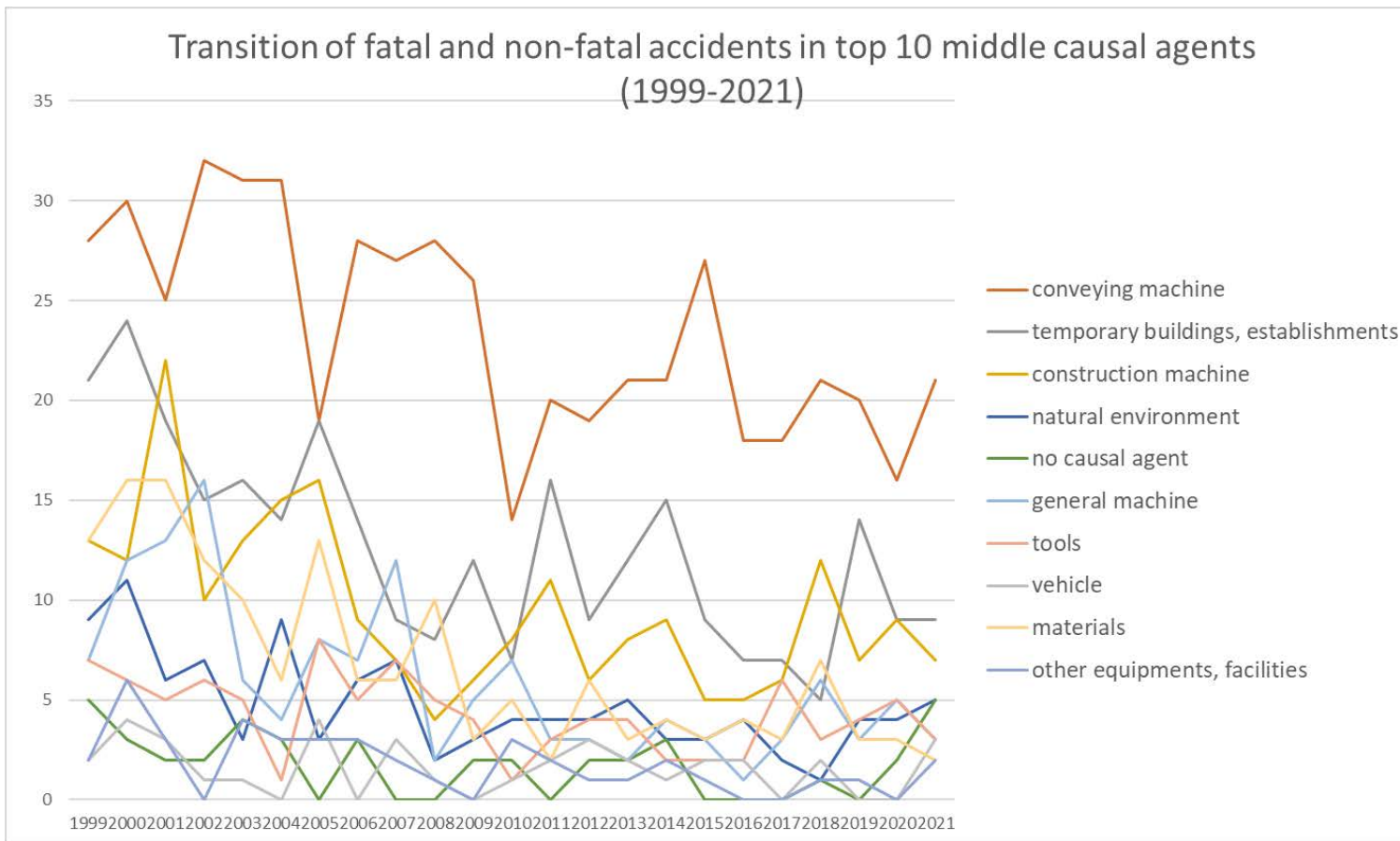


Transition of fatal and non-fatal accidents in each element like as causal agents, type of accidents, etc. in code no. 020202 gravel digging (1999-2021)



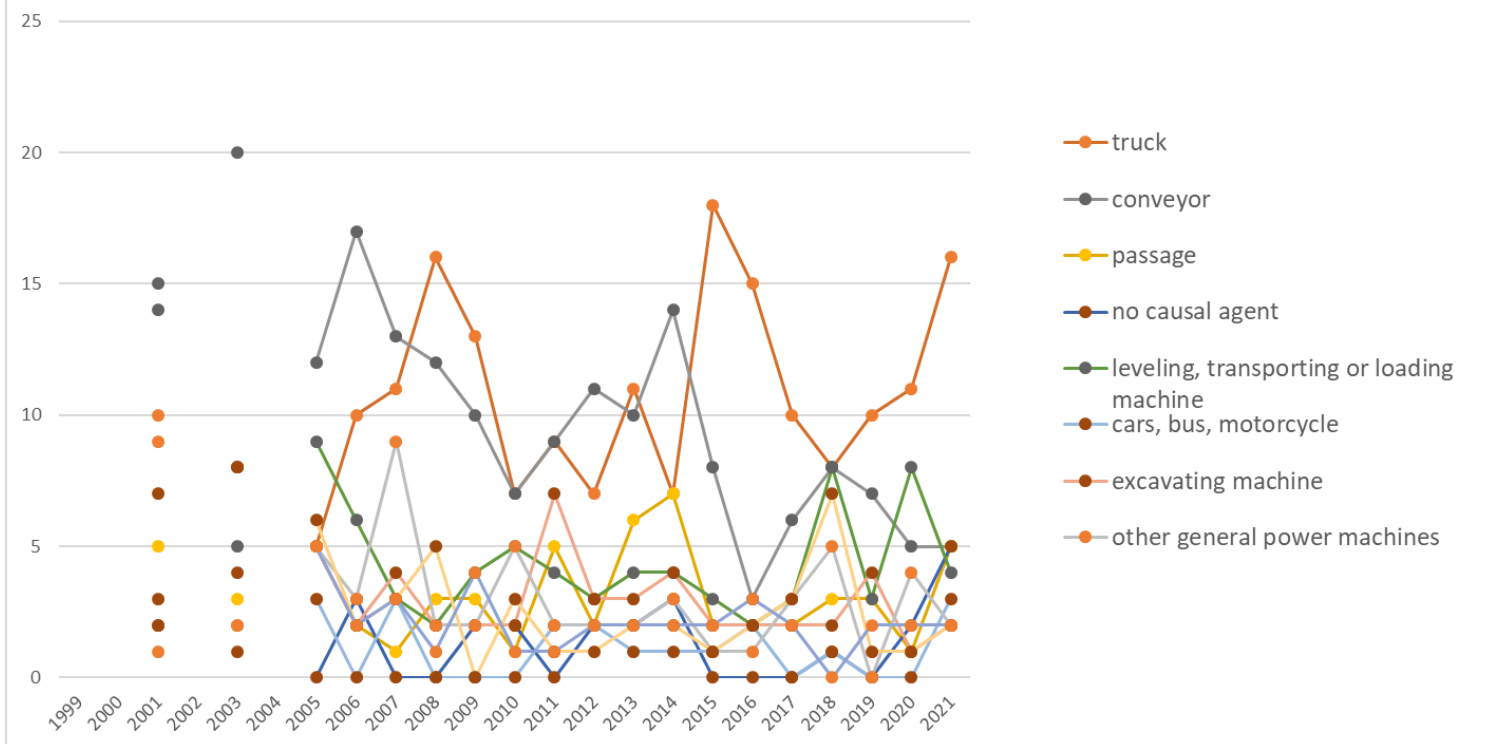
Transition of fatal and non-fatal accidents in large causal agents in code no. 020202 gravel digging (1999-2021)

Transition of fatal and non-fatal accidents in top 10 middle causal agents (1999-2021)



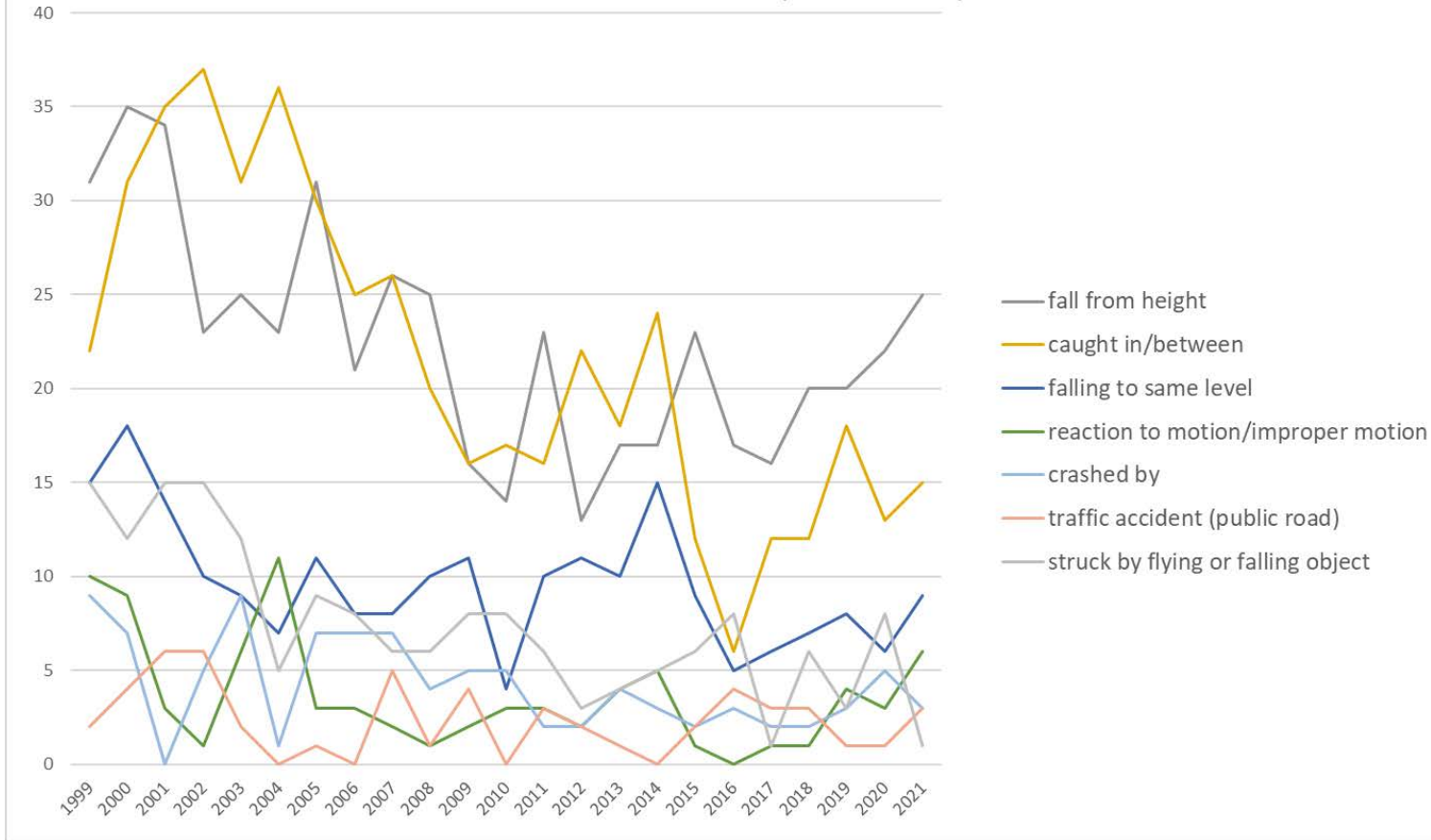
Transition of fatal and non-fatal accidents in middle causal agents in code no. 020202 gravel digging (1999-2021)

Transition of fatal and non-fatal accidents in top 10 small causal agents (1999-2021)



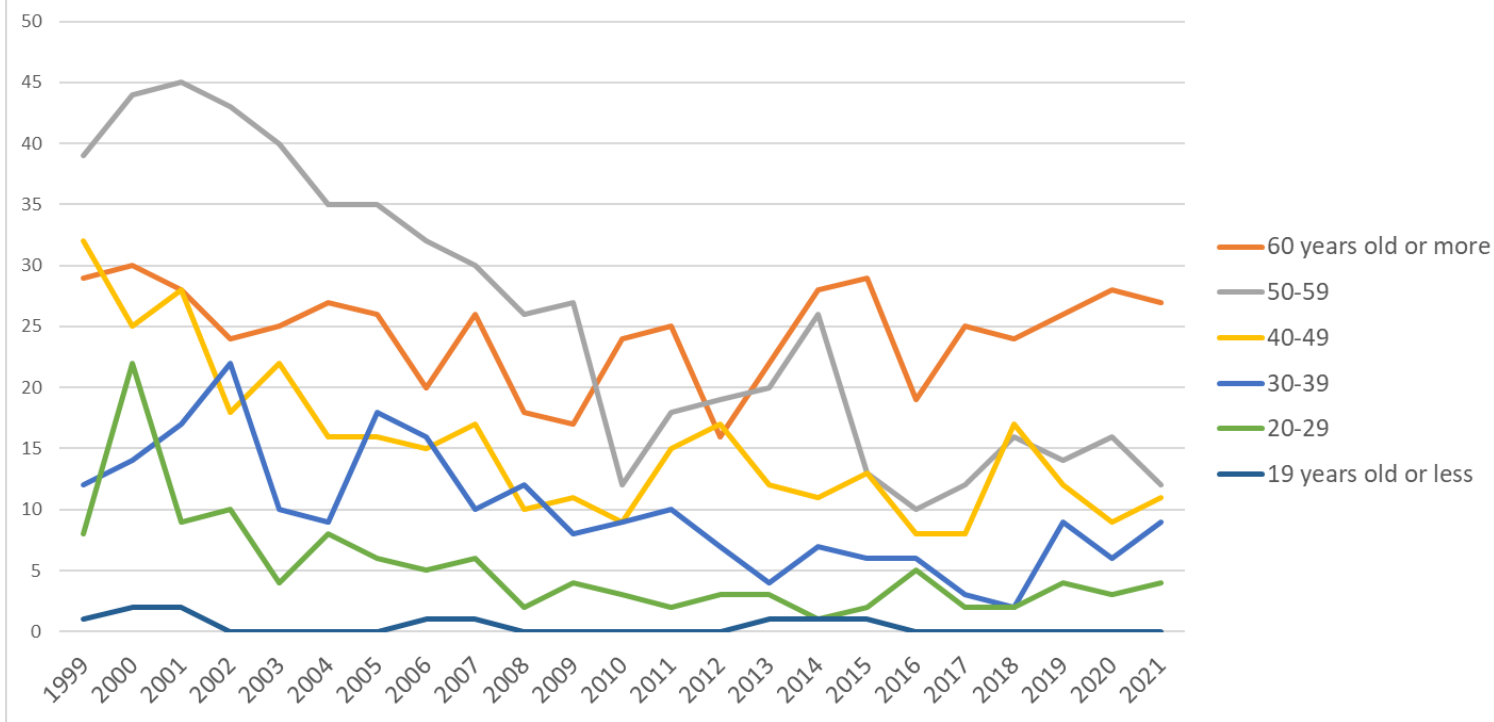
Transition of fatal and non-fatal accidents in small causal agents in code no. 020202 gravel digging (1999-2021)

Transition of fatal and non-fatal accidents in top 7 type of accidents
(1999-2021)



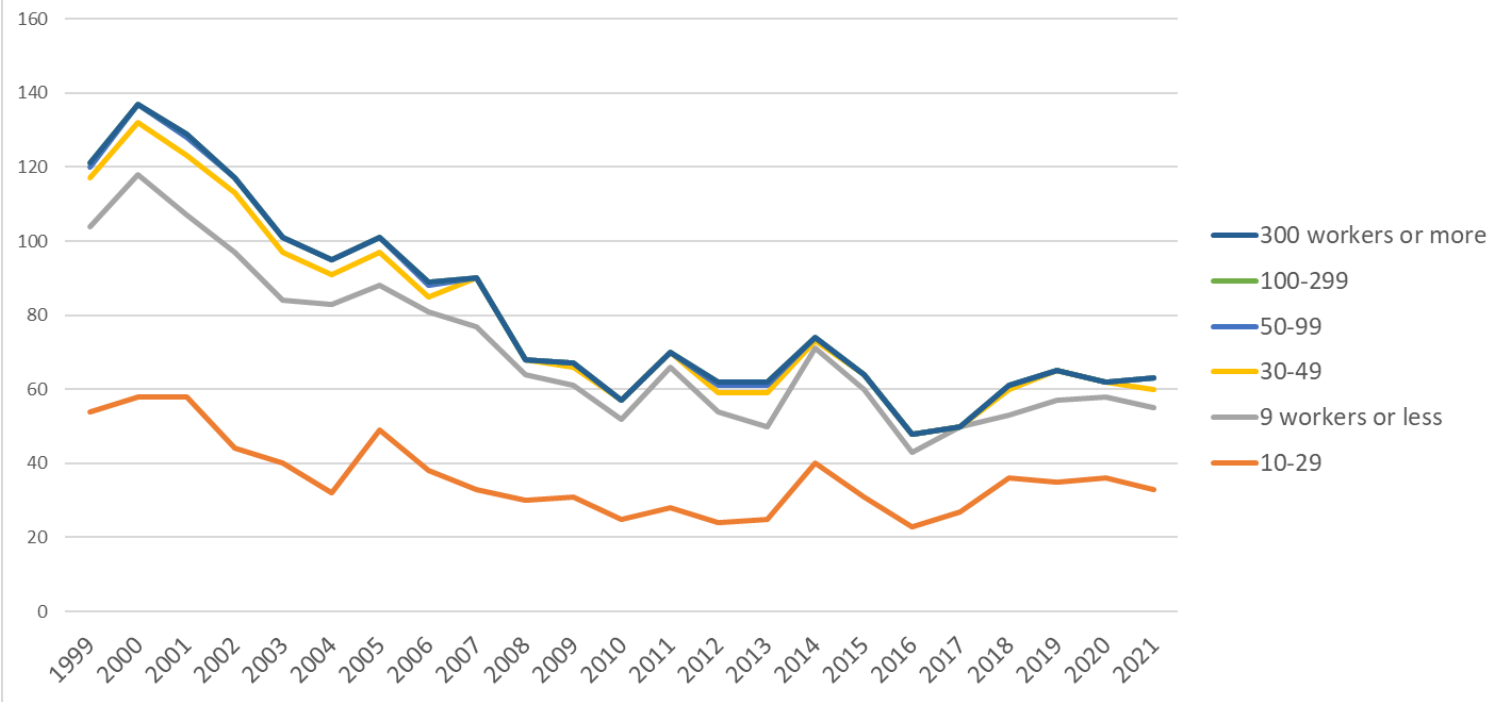
Transition of fatal and non-fatal accidents in type of accidents in code no. 020202 gravel digging (1999-2021)

Transition of fatal and non-fatal accidents in workers ages (1999-2021)



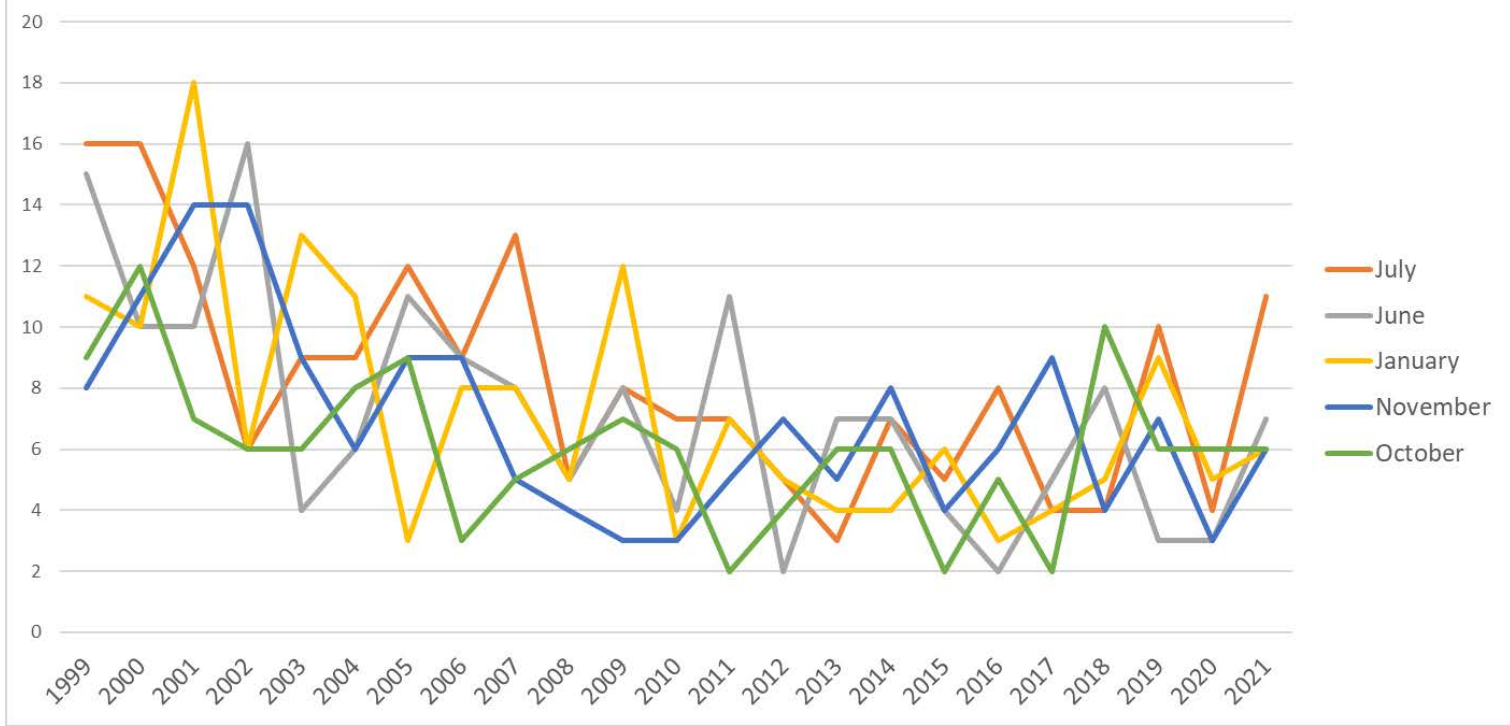
Transition of fatal and non-fatal accidents in workers ages in code no. 020202 gravel digging (1999-2021)

Transition of fatal and non-fatal accidents in workers scales (1999-2021)



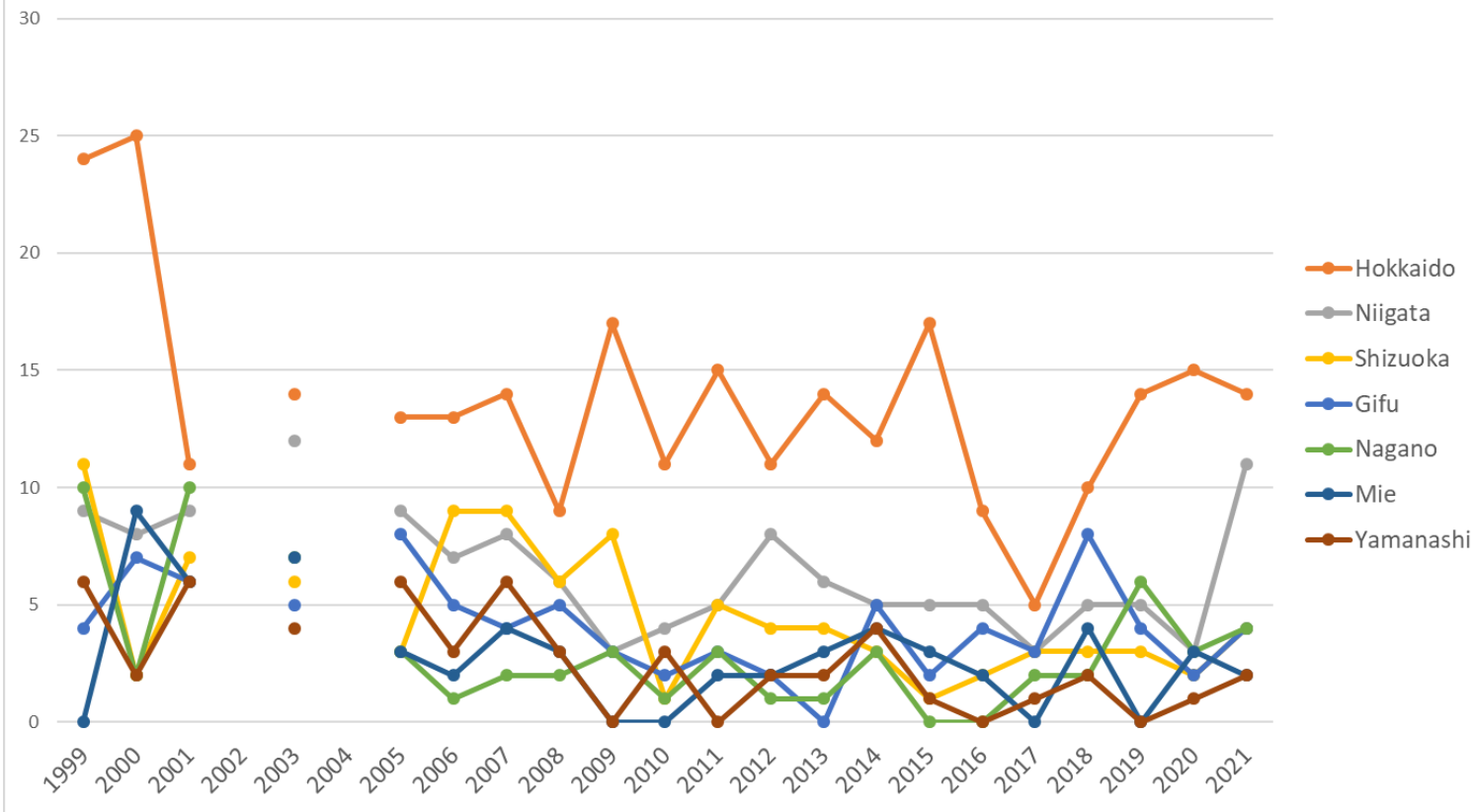
Transition of fatal and non-fatal accidents in workers scales in code no. 020202 gravel digging (1999-2021)

Transition of fatal and non-fatal accidents in top 5 months (1999-2021)



Transition of fatal and non-fatal accidents in months in code no. 020202 gravel digging (1999-2021)

Transition of fatal and non-fatal accidents in top 7 prefectures (1999-2021)



Transition of fatal and non-fatal accidents in prefectures in code no. 020202 gravel digging (1999-2021)

Transition of fatal and non-fatal accidents in large causal agents in code no. 020202 gravel digging (1999-2021)

code	Causal (L) agents	1999	2000	2001	2002	2003	2004	2005	2006	2007	2008	2009	2010	2011	2012	2013	2014	2015	2016	2017	2018	2019	2020	2021	total	Causal (L) agents
2	crane, conveying machine	33	34	30	37	33	32	23	30	34	31	28	15	26	22	23	25	31	23	19	23	21	20	25	618	crane, conveying machine
1	machine	23	28	41	33	22	25	28	18	21	9	12	15	16	11	11	16	10	7	11	19	14	16	11	417	machine
	temporary buildings,																									temporary

4	establishments	21	24	19	15	16	14	19	14	9	8	12	7	16	9	12	15	9	7	7	5	14	9	9	290	buildings, establishments
3	other equipment	14	17	11	10	12	4	13	11	11	8	6	8	6	6	6	8	6	3	8	5	7	7	6	193	other equipment
7	environment	9	11	6	7	3	9	3	6	7	2	3	4	4	4	5	3	3	4	2	1	4	4	5	109	environment
9	others	7	4	3	3	4	3	1	3			2	2		2	2	3	1			1		3	5	49	others
5	substance, material	13	16	17	12	10	7	13	6	6	10	3	5	2	8	3	4	3	4	3	7	5	3	2	162	substance, material
6	load	1	3	2		1	1	1	1	2		1	1					1							15	load
	total	121	137	129	117	101	95	101	89	90	68	67	57	70	62	62	74	64	48	50	61	65	62	63	1,853	total

Transition of fatal and non-fatal accidents in middle causal agents in code no. 020202 gravel digging (1999-2021)

code	Causal (M) agents	1999	2000	2001	2002	2003	2004	2005	2006	2007	2008	2009	2010	2011	2012	2013	2014	2015	2016	2017	2018	2019	2020	2021	total	Causal (M) agents
22	conveying machine	28	30	25	32	31	31	19	28	27	28	26	14	20	19	21	21	27	18	18	21	20	16	21	541	conveying machine
41	temporary buildings, establishments	21	24	19	15	16	14	19	14	9	8	12	7	16	9	12	15	9	7	7	5	14	9	9	290	temporary buildings, establishments
14	construction machine	13	12	22	10	13	15	16	9	7	4	6	8	11	6	8	9	5	5	6	12	7	9	7	220	construction machine
71	natural environment	9	11	6	7	3	9	3	6	7	2	3	4	4	4	5	3	3	4	2	1	4	4	5	109	natural environment
92	no causal agent	5	3	2	2	4	3		3			2	2		2	2	3				1		2	5	41	no causal agent

16	general machine	7	12	13	16	6	4	8	7	12	2	5	7	3	3	2	4	3	1	3	6	3	5	3	135	general machine
37	tools	7	6	5	6	5	1	8	5	7	5	4	1	3	4	4	2	2	2	6	3	4	5	3	98	tools
23	vehicle	2	4	3	1	1		4		3	1		1	2	3	2	1	2	2		2			3	37	vehicle
52	materials	13	16	16	12	10	6	13	6	6	10	3	5	2	6	3	4	3	4	3	7	3	3	2	156	materials
39	other equipments, facilities	2	6	3		4	3	3	3	2	1		3	2	1	1	2	1			1	1		2	41	other equipments, facilities
21	crane	3		2	4	1	1		2	4	2	2		4			3	2	3	1		1	4	1	40	crane
12	power transmission mechanism	3	3	5	2	3	3	4	1	1	2					1		1	1	2		3	2	1	38	power transmission mechanism
35	electric equipment		1							1			1				1			1				1	6	electric equipment
36	human power machine, tools	4	4	3	4	3		2	3	1	2	2	2	1	1	1	3	3	1	1		2	1		44	human power machine, tools
61	load	1	3	2		1	1	1	1	2		1	1					1							15	load
13	woodworking machine		1	1	2					1				1	1		2	1				1			11	woodworking machine
15	metal manufacturing machine				2		3		1		1	1		1			1				1				11	metal manufacturing machine
51	hazards, harmful substances			1			1								2							2			6	hazards, harmful substances

91	other causal agent	1	1					1									1						1	5	other causal agent	
99	unclassifiable	1		1	1																				3	unclassifiable
11	engine				1									1											2	engine
31	pressure vessel												1										1		2	pressure vessel
33	welding equipment	1																						1	2	welding equipment
17	mobile silviculture machine																									mobile silviculture machine
32	chemical facilities																									chemical facilities
34	kiln, caldron																									kiln, caldron
	total	121	137	129	117	101	95	101	89	90	68	67	57	70	62	62	74	64	48	50	61	65	62	63	1,853	total

Transition of fatal and non-fatal accidents in small causal agents in code no. 020202 gravel digging (1999-2021)

code	Causal (S) agents	1999	2000	2001	2002	2003	2004	2005	2006	2007	2008	2009	2010	2011	2012	2013	2014	2015	2016	2017	2018	2019	2020	2021	total	Causal (S) agents
221	truck			10		8		5	10	11	16	13	7	9	7	11	7	18	15	10	8	10	11	16	202	truck
224	conveyor			15		20		12	17	13	12	10	7	9	11	10	14	8	3	6	8	7	5	5	192	conveyor
417	passage			5		3		5	2	1	3	3	1	5	2	6	7	2	2	2	3	3	1	5	61	passage
921	no causal agent			2		4			3			2	2		2	2	3				1		2	5	28	no causal agent
141	leveling, transporting or loading machine			14		5		9	6	3	2	4	5	4	3	4	4	3	2	3	8	3	8	4	94	leveling, transporting or loading machine
	cars, bus,																									cars, bus,

231	motorcycle			2	1		3		3				2	2	1	1	1	2		1			3	22	motorcycle
142	excavating machine			7	8		5	2	4	2	2	2	7	3	3	4	2	2	2	2	4	1	2	64	excavating machine
169	other general power machines			9	2		5	3	9	2	2	5	2	2	2	3	1	1	3	5		4	2	62	other general power machines
521	metal material			3	8		6	2	3	5		3	1	1	2	2	1	2	3	7	1	1	2	53	metal material
413	stairs, landing stage			1	2		5	2	3	1	4	1	1	2	2	2	2	3	2		2	2	2	39	stairs, landing stage
719	other environments			3			2	2	1	2		1	4	2	2	2	1	1	1	1	2	2	2	31	other environments
391	other equipment, facilities			3	4		3	3	2	1		3	2	1	1	2	1			1	1		2	30	other equipment, facilities
711	natural ground, rock			2	2		1	2	4		1	2		1	1	1	1	1	1		2	1	2	25	natural ground, rock
416	working platform, boot board			1	3		2		1	1	3	3	1			2		1			1	3	2	24	working platform, boot board
379	other tools			1			2	3	3	2	1			1	1	1			1	2		2	2	22	other tools
371	ladder			2	5		4	2	1	3	1	1	2	2	3	1	2	1	3		3	1	1	38	ladder
162	mixer, grinder			4	4		2	4	3		3	2	1	1		1	2			1	3	1	1	33	mixer, grinder
121	power transmission mechanism			5	3		4	1	1	2					1		1	1	2		3	2	1	27	power transmission mechanism
712	standing tree							1	2		2	1		1									1	9	standing tree
149	other construction machines			1			1	1								1		1	1	1			1	8	other construction machines
219	other powered crane			2						1	1											2	1	8	other powered crane
351	transmission																						1	1	transmission

418	building, establishment			5	3	3	5	2	1	1	1	4	2	1	2			3	1	5	3		42	building, establishment
523	stone, sand, substance			10	1	5	3	1	5	1	2	1	5		2	1	1			1	1		40	stone, sand, substance
419	other temporary buildings, establishments			4	4	3	1	2		1		1	1	3	2	2					1		25	other temporary buildings, establishments
364	hand tool			2	1	2	2		2	2	2	1	1		2	3		1		1	1		23	hand tool
372	slinging tool			2		2		3		2		1	1				1	2	1	1	2		18	slinging tool
225	loader					1	1	1		2		2	1			1		1	3	2			15	loader
212	mobile crane						2	3		1		3			1	1				1	2		14	mobile crane
411	scaffolding			1	1		1		2		1	1	1			2	1			1			12	scaffolding
211	crane				1				2			1			2	1	2	1					10	crane
239	other vehicles			1			1		1		1		1	1		1			1				8	other vehicles
415	roof, beam, haze, crossbeam, principal rafter			2		1	1					2	1						1				8	roof, beam, haze, crossbeam, principal rafter
522	lumber, bamboo			2	1			1		1						1	1			1			8	lumber, bamboo
529	other materials			1			2	1	1		1				1						1		8	other materials
611	load			1	1	1	1	2		1	1												8	load
361	human power cranes				2			1	1						1	1		1					7	human power cranes
229	other powered conveying machines				2	1		1		1									1				6	other powered conveying machines
414	opening						2					1				1				1			5	opening

136	chain saw			1						1				1		1							4	chain saw				
715	high/cold temperature environment			1		1										1						1		4	high/cold temperature environment			
145	demolition machine											1			1							1		3	demolition machine			
153	grinding machine, buffing machine													1									1		3	grinding machine, buffing machine		
159	other metal manufacturing machines																							3	other metal manufacturing machines			
222	forklift																						1		3	forklift		
352	electric power facilities																							1		3	electric power facilities	
713	water																							1		3	water	
911	other causal agent																							1		3	other causal agent	
131	circular sawing machine																							1		2	circular sawing machine	
139	other woodworking machines																							1		2	other woodworking machines	
227	rough terrain hauler																							1	1		2	rough terrain hauler
512	inflammable substance																							1		2	inflammable substance	
513	inflammable gas																								2		2	inflammable gas
612	machine/equipment as load																							1		2	machine/equipment as load	

code	Age	1999	2000	2001	2002	2003	2004	2005	2006	2007	2008	2009	2010	2011	2012	2013	2014	2015	2016	2017	2018	2019	2020	2021	total	Age
6	60 years old or more	29	30	28	24	25	27	26	20	26	18	17	24	25	16	22	28	29	19	25	24	26	28	27	563	60 years old or more
5	50-59	39	44	45	43	40	35	35	32	30	26	27	12	18	19	20	26	13	10	12	16	14	16	12	584	50-59
4	40-49	32	25	28	18	22	16	16	15	17	10	11	9	15	17	12	11	13	8	8	17	12	9	11	352	40-49
3	30-39	12	14	17	22	10	9	18	16	10	12	8	9	10	7	4	7	6	6	3	2	9	6	9	226	30-39
2	20-29	8	22	9	10	4	8	6	5	6	2	4	3	2	3	3	1	2	5	2	2	4	3	4	118	20-29
1	19 years old or less	1	2	2					1	1						1	1	1							10	19 years old or less
	total	121	137	129	117	101	95	101	89	90	68	67	57	70	62	62	74	64	48	50	61	65	62	63	1,853	total

Transition of fatal and non-fatal accidents in workers scales in code no. 020202 gravel digging (1999-2021)

code	Workers scale	1999	2000	2001	2002	2003	2004	2005	2006	2007	2008	2009	2010	2011	2012	2013	2014	2015	2016	2017	2018	2019	2020	2021	total	Workers scale
2	10-29	54	58	58	44	40	32	49	38	33	30	31	25	28	24	25	40	31	23	27	36	35	36	33	830	10-29
1	9 workers or less	50	60	49	53	44	51	39	43	44	34	30	27	38	30	25	31	29	20	23	17	22	22	22	803	9 workers or less
3	30-49	13	14	16	16	13	8	9	4	13	4	5	5	4	5	9	2	4	5		7	8	4	5	173	30-49
4	50-99	3	5	5	4	4	4	4	3			1			2	2	1				1			3	42	50-99
5	100-299	1		1					1						1	1									5	100-299
6	300 workers or more																									300 workers or more
	total	121	137	129	117	101	95	101	89	90	68	67	57	70	62	62	74	64	48	50	61	65	62	63	1,853	total

Transition of fatal and non-fatal accidents in months in code no. 020202 gravel digging (1999-2021)

code	Month	1999	2000	2001	2002	2003	2004	2005	2006	2007	2008	2009	2010	2011	2012	2013	2014	2015	2016	2017	2018	2019	2020	2021	total	Month
7	July	16	16	12	6	9	9	12	9	13	5	8	7	7	5	3	7	5	8	4	4	10	4	11	190	July

6	June	15	10	10	16	4	6	11	9	8	5	8	4	11	2	7	7	4	2	5	8	3	3	7	165	June
1	January	11	10	18	6	13	11	3	8	8	5	12	3	7	5	4	4	6	3	4	5	9	5	6	166	January
11	November	8	11	14	14	9	6	9	9	5	4	3	3	5	7	5	8	4	6	9	4	7	3	6	159	November
10	October	9	12	7	6	6	8	9	3	5	6	7	6	2	4	6	6	2	5	2	10	6	6	6	139	October
3	March	8	5	13	11	10	6	5	7	8	5	4	7	8	7	6	7	8	4	5	6	4	7	5	156	March
12	December	7	9	9	15	4	5	9		4	5	4	4	7	7	6	4	7	5	3	4	7	4	5	134	December
2	February	7	16	9	8	14	11	9	11	12	8	1	3	5	9	6	5	6	5	1	5	5	9	4	169	February
4	April	7	15	10	8	6	11	11	7	8	9	5	6	8	7	4	9	3	2	6	4	2	6	4	158	April
9	September	14	9	13	11	6	12	7	8	6	3	5	3	5	2	5	6	4	3	6	3	4	4	4	143	September
5	May	10	12	6	7	8	4	8	8	5	7	6	6	2	4	6	5	9	2	3	3	3	6	4	134	May
8	August	9	12	8	9	12	6	8	10	8	6	4	5	3	3	4	6	6	3	2	5	5	5	1	140	August
	total	121	137	129	117	101	95	101	89	90	68	67	57	70	62	62	74	64	48	50	61	65	62	63	1,853	total

Transition of fatal and non-fatal accidents in prefectures in code no. 020202 gravel digging (1999-2021)

code	Prefecture	1999	2000	2001	2002	2003	2004	2005	2006	2007	2008	2009	2010	2011	2012	2013	2014	2015	2016	2017	2018	2019	2020	2021	total	Prefecture
1	Hokkaido	24	25	11		14		13	13	14	9	17	11	15	11	14	12	17	9	5	10	14	15	14	287	Hokkaido
15	Niigata	9	8	9		12		9	7	8	6	3	4	5	8	6	5	5	5	3	5	5	3	11	136	Niigata
22	Shizuoka	11	2	7		6		3	9	9	6	8	1	5	4	4	3	1	2	3	3	3	2	4	96	Shizuoka
21	Gifu	4	7	6		5		8	5	4	5	3	2	3	2		5	2	4	3	8	4	2	4	86	Gifu
20	Nagano	10	2	10		7		3	1	2	2	3	1	3	1	1	3			2	2	6	3	4	66	Nagano
24	Mie		9	6		7		3	2	4	3			2	2	3	4	3	2		4		3	2	59	Mie
19	Yamanashi	6	2	6		4		6	3	6	3		3		2	2	4	1		1	2		1	2	54	Yamanashi
9	Tochigi	3	4	4		3		6	2	5	5		3	2	2	4	2			1	1	1	2	2	52	Tochigi
16	Toyama	3	3	5		2		6	1		3	5	4	3	1	3	2	3	1	1	2	1	1	2	52	Toyama

45	Miyazaki	1	2	1		1		3	5	4	2	1	4		1	2	2	3		2				2	36	Miyazaki	
36	Tokushima		5	2		2		1	2	2				1	1	1	1			1	1	2	1	2	25	Tokushima	
23	Aichi	1	1	3				1	1	1		2	1	1	1	1	3		1	1			1	2	22	Aichi	
8	Ibaraki	7	8	4		3		6	3	2	5	2	4	2	3	1	2	2	2	1		2	4	1	64	Ibaraki	
4	Miyagi	1	1	4		2		3	3	1	1	2	1	1	1	1	3	6	1	2	3		1	1	39	Miyagi	
6	Yamagata	5	7	5		2		2		2	1		1	2	3	2			2	1		1	2	1	39	Yamagata	
5	Akita	2	4	3		3		2	6				2	1		1	2	1		1	2	2	1	1	34	Akita	
7	Fukushima	3	2	1		1			4			1		1	1	3	3			4	3	2	3	1	33	Fukushima	
3	Iwate	3	1	3		3		1	1	3	1	2	1			1	2	2	1			1	2	1	29	Iwate	
28	Hyogo	2	4	4				1	1	1		3	1		1	1	1			1		3	3	1	28	Hyogo	
30	Wakayama		3	2		1				2		1		1	1	2	1	1	3	1	1	1	2	1	24	Wakayama	
26	Kyoto	1	1	3		3		2	1	1				1	1			2		2	1	1	1	1	22	Kyoto	
11	Saitama	2	3			1		2		4			1	2	1					1	2			1	20	Saitama	
14	Kanagawa	2	2	1		3		1	1		1		1	1			1		1		1		2	1	19	Kanagawa	
47	Okinawa							1																1	2	Okinawa	
12	Chiba	4	5	2		2		1	2	3	1	1	2	2	2	4	1	1	2	4	4	4	4	2		49	Chiba
43	Kumamoto	1	4	2		1		1	3	1	4	5	3	1	2		1	2	3	1	1	4	1		41	Kumamoto	
44	Oita	1	1	2		2		3	3	1	3		1	1		1	2	3	2	1	1				28	Oita	
2	Aomori	2	2	3		1		2	2	2	1	1	1	2	1		1	1			1	2			25	Aomori	
10	Gunma	2	2	4		1		2			2	1	1	2	1	1			1	2	1				23	Gunma	
40	Fukuoka	1	3	5		1			1		1	2	1			1	2	2	1			1			22	Fukuoka	
18	Fukui	1	2			1								1	1	1	1	2	2	1			2		15	Fukui	
17	Ishikawa			1		1						1		4	1			1	1	2		1	1		14	Ishikawa	

25	Shiga	2		4		3		1				1	2												14	Shiga	
38	Ehime		1					1	1	1	1	1	1	1	1	1									13	Ehime	
34	Hiroshima		2	1		2		1	1		1	1		1			1	1							12	Hiroshima	
46	Kagoshima	1	1					4	1	2		1		1											12	Kagoshima	
33	Okayama	1	2	2				2		2				1		1									11	Okayama	
35	Yamaguchi		2	2				1						1		1	1								9	Yamaguchi	
27	Osaka	2								1	1			2			1		1						8	Osaka	
39	Kochi	2	1							1				1		1				1	1				8	Kochi	
32	Shimane		2	1		1													1						5	Shimane	
29	Nara		1						1									1							3	Nara	
13	Tokyo									1									1						2	Tokyo	
37	Kagawa								2																2	Kagawa	
41	Saga	1																							1	Saga	
31	Tottori																										Tottori
42	Nagasaki																										Nagasaki
	total	121	137	129		101		101	89	90	68	67	57	70	62	62	74	64	48	50	61	65	62	63	1,641	total	

Data source : <https://anzeninfo.mhlw.go.jp/user/anzen/tok/anst00.htm>

Return to https://www.jisha.or.jp/english/statistics/202211_23.html